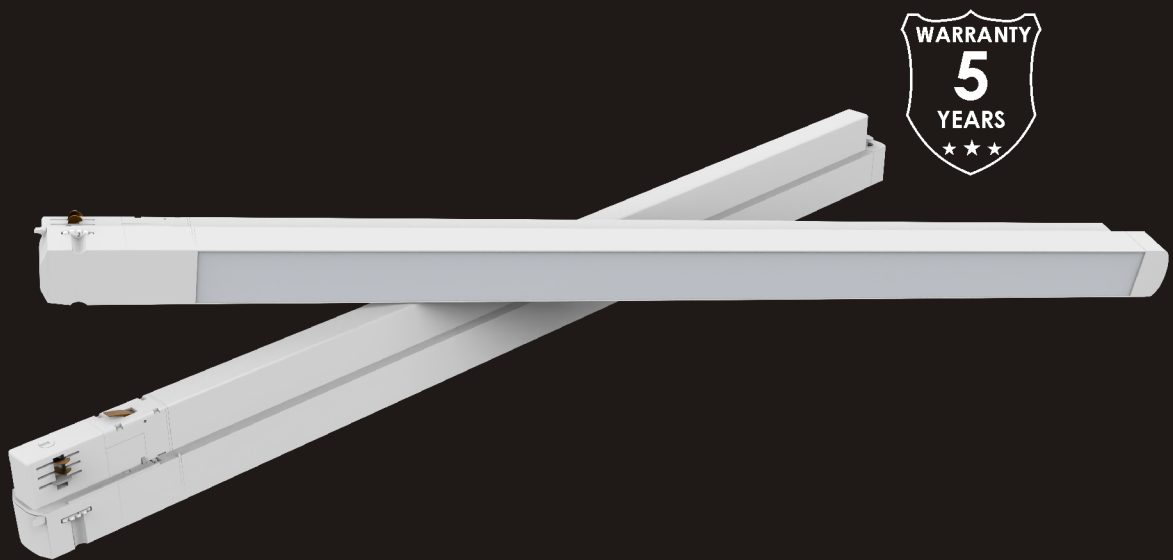


LITE HOME

Track linear light

2 0 2 1



— Born to illuminate the supermarket —

📍 Zhaofeng Industrial Park, No. 16, Shuitian 1st Road, Tongle community, Baolong street, Longgang District, Shenzhen, P.R.C

©2010-2021 LITEHOME. All rights reserved.

Features

- 4-Wire 3-circuit Track adapter
- SMD2835 LED Light Source with Global Patent Protection
- Flicker Free Driver, THD<15%
- High Efficacy: 110lm/w ±5%, up to 125lm/w
- L80B10 Lifespan(Ta=25°C):50,000hrs, Warranty: 5 years
- Material: Black color Aluminium (White color for options)
- Trackway for convenient installation and maintenance
- Application: Supermarket / Store / Warehouse / Library / Museum / Exhibition / Office / Hotel



Data Sheet

Article Number	Power (W)	Lumen	Working Current
LH-TLBP2-010-XXXX	10	1000lm	210mA
LH-TLBP2-020-XXXX	20	2000lm	450mA
LH-TLBP3-020-XXXX	20	2000lm	450mA
LH-TLBP3-030-XXXX	30	3000lm	750mA
LH-TLBP4-030-XXXX	30	3000lm	750mA
LH-TLBP4-040-XXXX	40	4000lm	950mA
LH-TLBP5-030-XXXX	30	3000lm	750mA
LH-TLBP5-040-XXXX	40	4000lm	950mA

Light Source	SMD2835
CRI	>80 / >90
Beam Angle	120°
CCT	3000K/4000K/5000K/6000K
AC Input	200-240V 50/60Hz
DC Output	30-40V
SDCM	<4
Power Factor	>0.95
Warranty	5 Years
Operating Temperature	-20~+40°C

* Where the first "X" represents diffuser type, it can be F(Frosted), T(Transparent)
The second "X" represents CCT, it can be W(3000K/4000K), P(5000K), C(6000K)

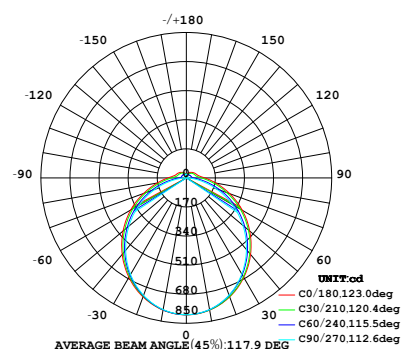
Efficacy Version

Cover	Standard	Premium
Frosted	100lm/w	125lm/w

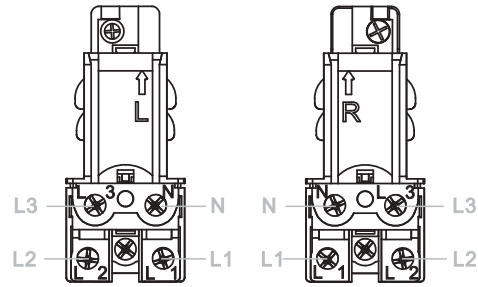
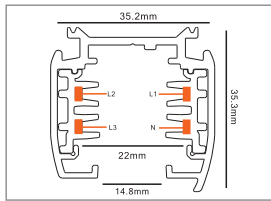
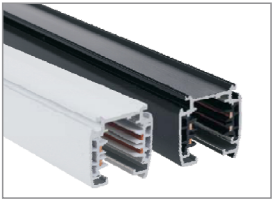
Please note:

1. Above efficacy based on 4000K
2. All values are based on an ambient temperature of 25°C
3. Efficacy tolerance is +/-5% and wattage tolerance is +/-5%

LUMINOUS INTENSITY DISTRIBUTION DIAGRAM



Product Details

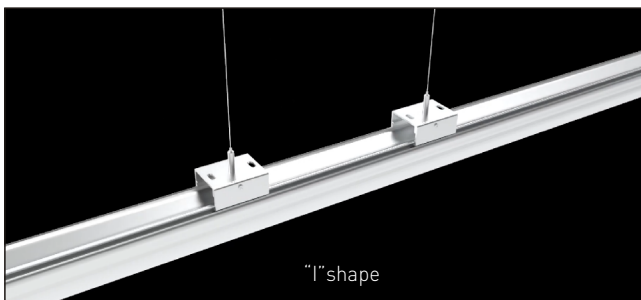


Free Combination

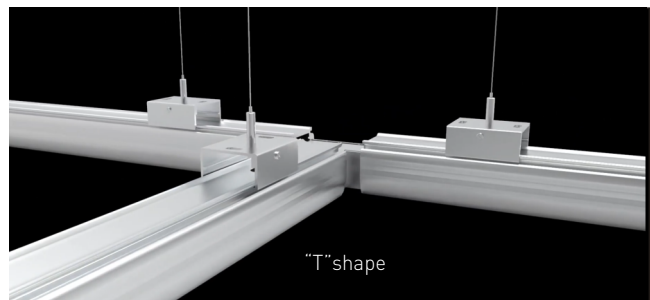


Track linear light
x
Track light

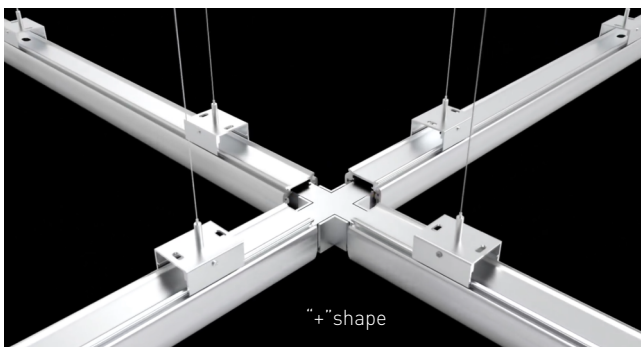
Modelling



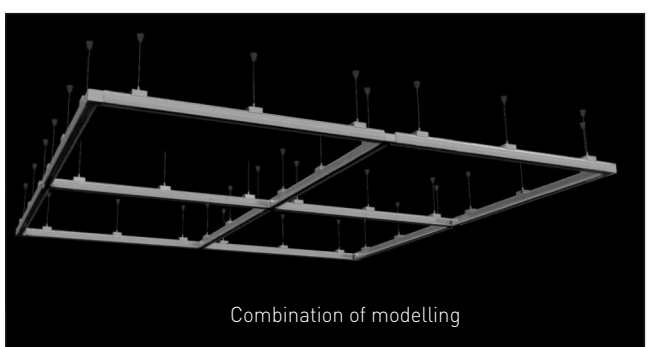
"I" shape



"T" shape

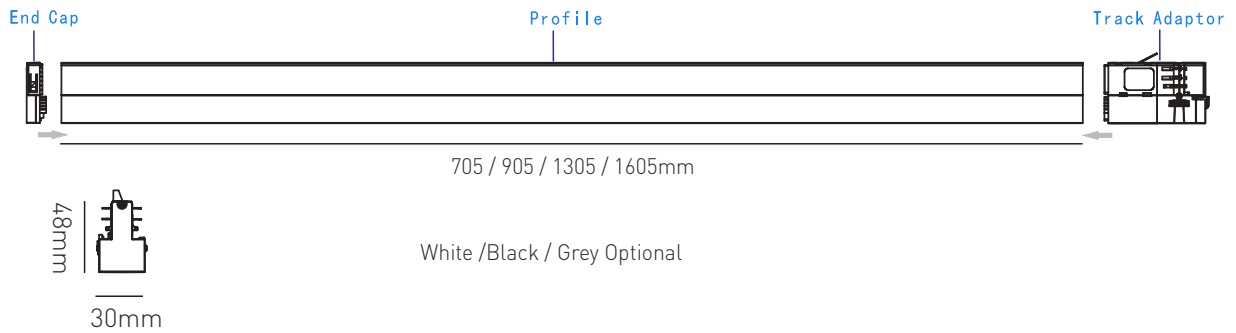


"+" shape



Combination of modelling

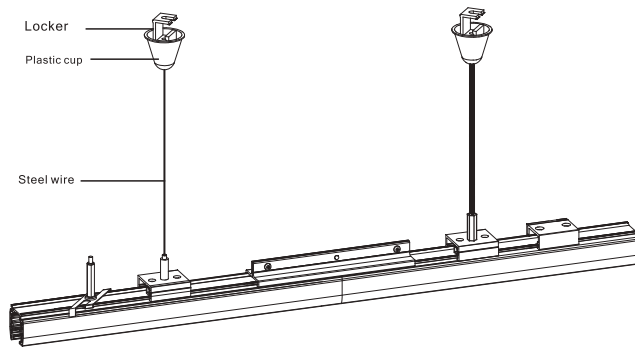
Dimension



Packaging

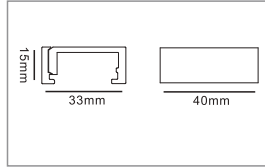
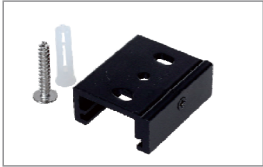
Length	Carton Size (20pcs/ctn)	N.W.(CTN)	G.W.(CTN)	20'GP	40'GP	40'HQ
705mm	740*235*390mm	11kg	11.8kg	6700pcs	13900pcs	16680pcs
905mm	950*235*390mm	14kg	15.1kg	5400pcs	11200pcs	13440pcs
1305mm	1340*235*390mm	20kg	21.5kg	3700pcs	7600pcs	9120pcs
1605mm	1640*235*390mm	24.5kg	26.3kg	3000pcs	6400pcs	7680pcs

Installation

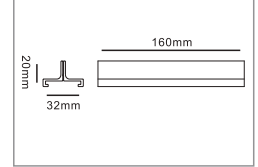


Optional accessories

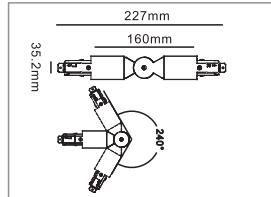
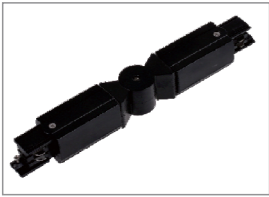
Ceiling Clamp kit



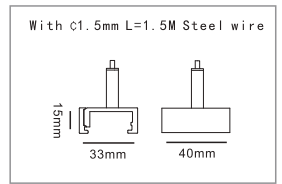
Suspension Clamp for track connection



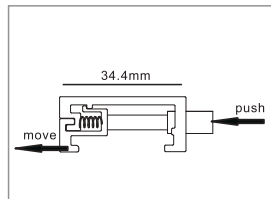
Twisted Connector



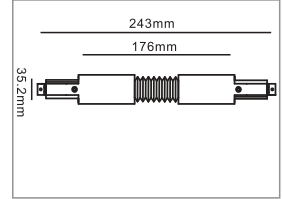
Suspension mount kit



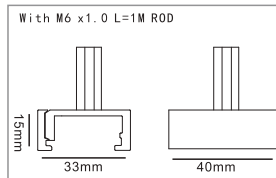
Ceiling Kit with spring



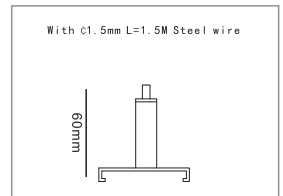
Flexible Connector



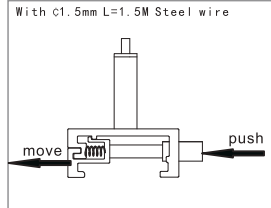
Suspension mount ROD kit



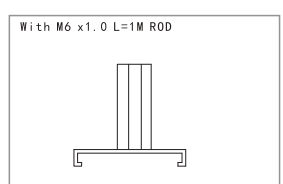
Suspension mount EZCLIK kit



Suspension Kit with spring

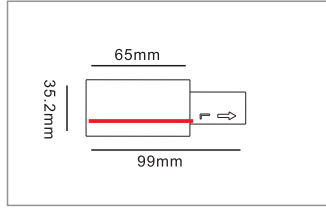


Suspension mount EZCLIK kit

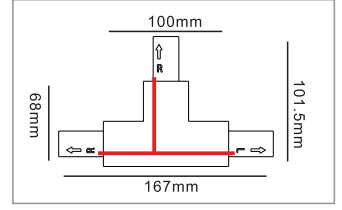


Connector Optional

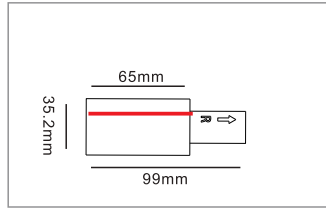
Track Power Connector (L)



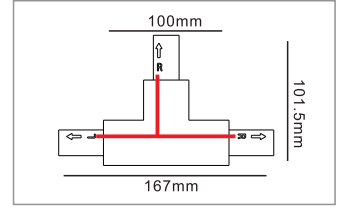
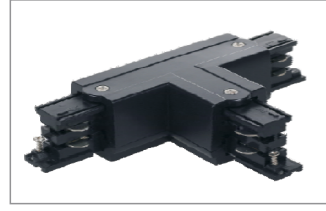
"T" Connector (L1)



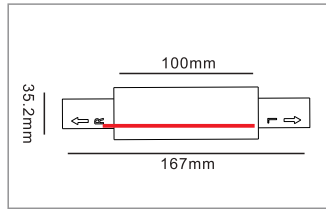
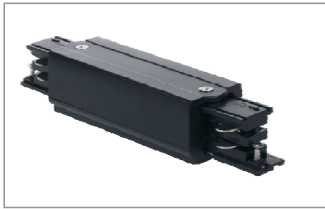
Track Power Connector (R)



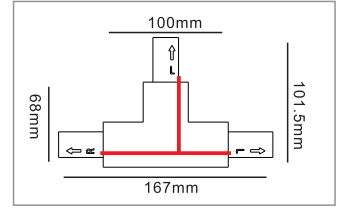
"T" Connector (L2)



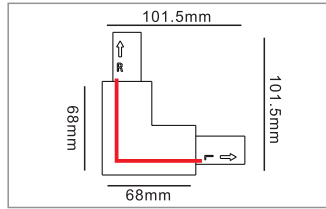
Straight Connector



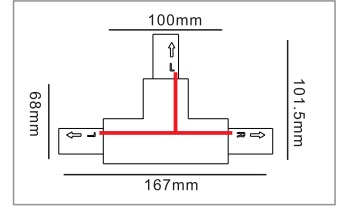
"T" Connector (R1)



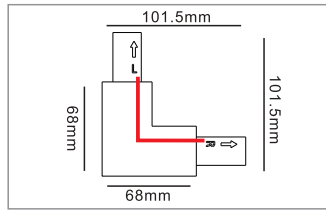
"L" Connector (L)



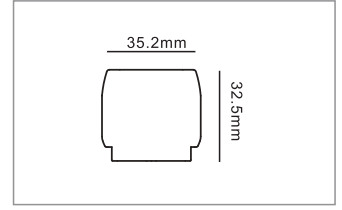
"T" Connector (R2)



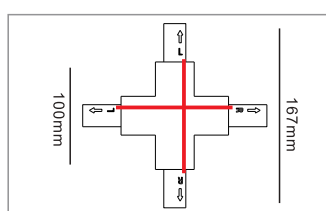
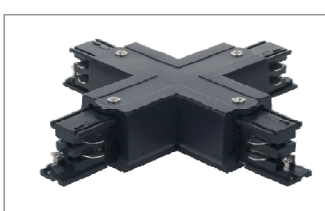
"L" Connector (R)



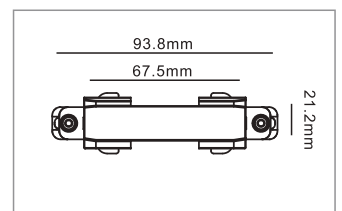
End Cap



"+" Connector



Mini Joiner Connector



Applications

