



齐力流体与世界同步
 QL fluid synchronizing with the world

Qili Fluid Equipment



温州齐力流体设备有限公司
 Wenzhou Qili Fluid Equipment Co., Ltd
 温州齐力轻工机械锻压厂
 Wenzhou Qili Light Industry Machinery Forging Factory

地址：温州经济技术开发区滨海园区滨海三道3839号-1
 Add: 3839#-1 Three Road Binhai Development Zone
 Wenzhou Zhejiang China

电话/TEL: 0086-0577-86990175 传真/FAX: 0086-0577-86990176

开户行：中国工商银行股份有限公司温州龙湾支行

Bank: Industrial and Commercial Bank of China Limited Longwan Branch

帐号/Account NO.: 120322 7309 20029 1962 QQ: 1121446895

网址/Http: www.wzqlqgjx.cn http://www.sanitary-valve-fittings.com

邮箱/E-mail: cy-zhu@wzqlqgjx.cn cidy@wzqlqgjx.cn anna@wzqlqgjx.cn

jessie@wzqlqgjx.cn tera@wzqlqgjx.cn mesue@wzqlqgjx.cn lida@wzqlqgjx.cn



温州齐力流体设备有限公司
 Wenzhou Qili Fluid Equipment Co., Ltd
 温州齐力轻工机械锻压厂
 Wenzhou Qili Light Industry Machinery Forging Factory



齐力流体与世界同步

QL fluid synchronizing with the world

企业简介

Corporate Profile



温州齐力流体设备有限公司是一家集科研、生产为一体的现代企业，专业生产高精度卫生级不锈钢流体设备配件及管道所有连接件、锻造、精加工一条龙生产。

我们以一流的机械设备和专业的科研人员为所有从事不锈钢需求行业提供优质服务。产品广泛适用于制药、饮料、乳制品、啤酒、生物化工等领域。所有产品均按：3A,SMS,DIN,RJT,IDF,DS等标准制造，所有产品均达到GMP药典要求。产品远销美国，加拿大，欧洲，澳洲,中东及台湾等30多个国家和地区

同盟、友谊、创新是齐力公司的经营理念。我们始终不会忘记客户给我们的支持与宝贵的意见、齐力人会把高质量的材料、先进的设计、严格的制造标准及质量保证体系完美结合。力争为客户提供最好、最优的产品。

齐力公司满腔热情欢迎您的合作、并诚信恭候各界朋友的光临！

Wenzhou Qili Fluid Equipment CO.,Ltd is a collection of scientific research, production as one of the modern enterprise, specializing in production of high precision sanitary stainless steel fluid equipment parts and pipe fittings.

Our first-class equipment and professional researchers engaged in stainless steel demand for all industries to provide quality services. All products are: 3A,SMS,DIN,RJT,IDF,DS manufacturing standards, all products meet the GMP requirements of the pharmacopoeia. Products are exported to The United States, Canada, Europe, Newzealand, Central Asia and Taiwan more than 30 countries and regions.

Alliance and friendship, innovation is the company's operating philosophy. We always do not forget to give our customers the support and valuable advice, we will high-quality materials, advanced design, strict manufacturing standards and quality assurance system perfect combination. Strive to provide the best, the best products.

Qili company full of enthusiasm to welcome you to join, and sincere welcome friends from all walks of life to visit.



总经理致辞

GENERAL MANAGER ORATION

人才是企业发展的源泉和动力，也是企业综合实力的集中体现。我公司拥有一支高素质的专业队伍，专业配务齐全，年龄结构合理，施工经验丰富。坚持以人为本，着力激发员工潜力和创造力，公司上下创业热情高涨。在员工选用上，坚持学识优先，努力打造学习型团队，凭借人才智力优势，抢占工程行业鳌头。

Talent is the source and power of enterprise development, but also embodies the comprehensive strength. My company has a team of highly qualified professionals, professional works with complete, Reasonable age structure construction experience. Adhere to the people-oriented, focused stimulate employee potential and creativity, entrepreneurial enthusiasm across the company. On staff selection, insist Knowledge first, and strive to create a learning team, intellectual superiority by virtue of talent, Preempt the engineering industry Ngau Tau.

领航未来

Because of your good, make we unceasingly enterprising, let oneself is more outstanding, your encouragement and need is our motivation and pursue, common development is full of love and win the share is big wisdom.

Pilot future

团队

是企业文化的核心



TEAM SPIRIT IS THE CORE
OF ENTERPRISE CULTURE





温州齐力流体设备有限公司
Wenzhou Qili Fluid Equipment Co., Ltd
温州齐力轻工机械锻压厂
Wenzhou Qili Light Industry Machinery Forging Factory

- 诚信为本
- Honesty

- 服务至上
- Service-oriented

- 精益求精
- Excellence



齐力流体 · 系列产品

Qili Fluid Product Lines



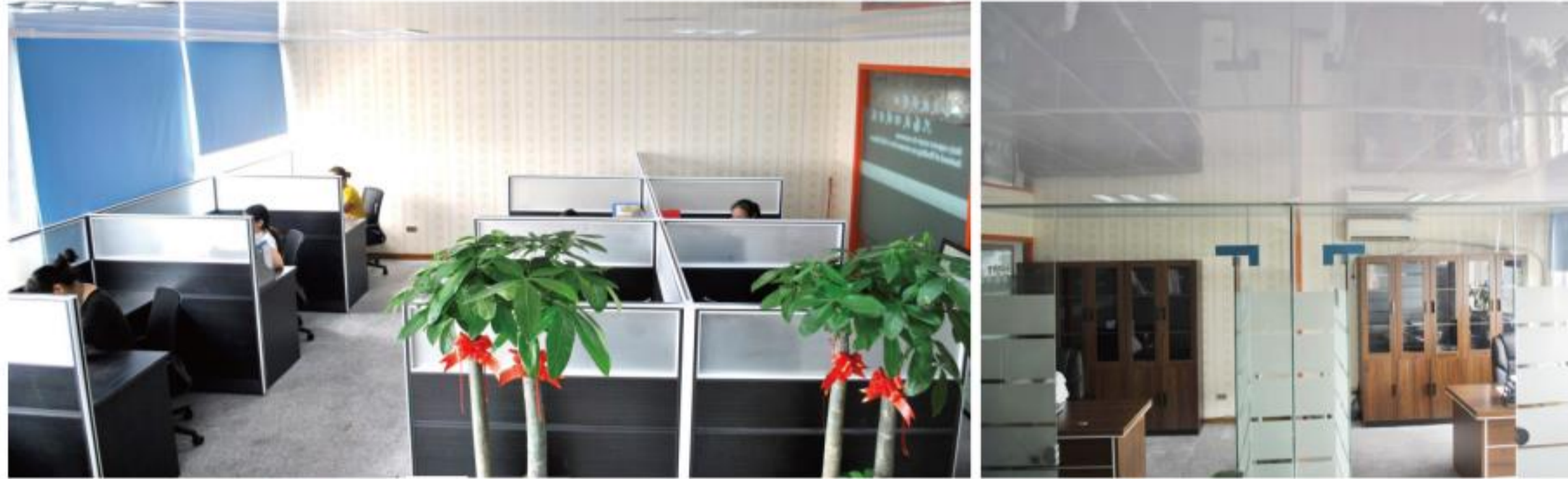
齐力流体与世界同步
QL fluid synchronizing with the world



齐力流体



办公室展示/Office



精益求精
KEEP IMPROVING

齐力流体与世界同步
 QL fluid synchronizing with the world



数控车间
CNC WORKSHOP





锻造车间
FORGING WORKSHOP



仓库中心
WAREHOUSE CENTER



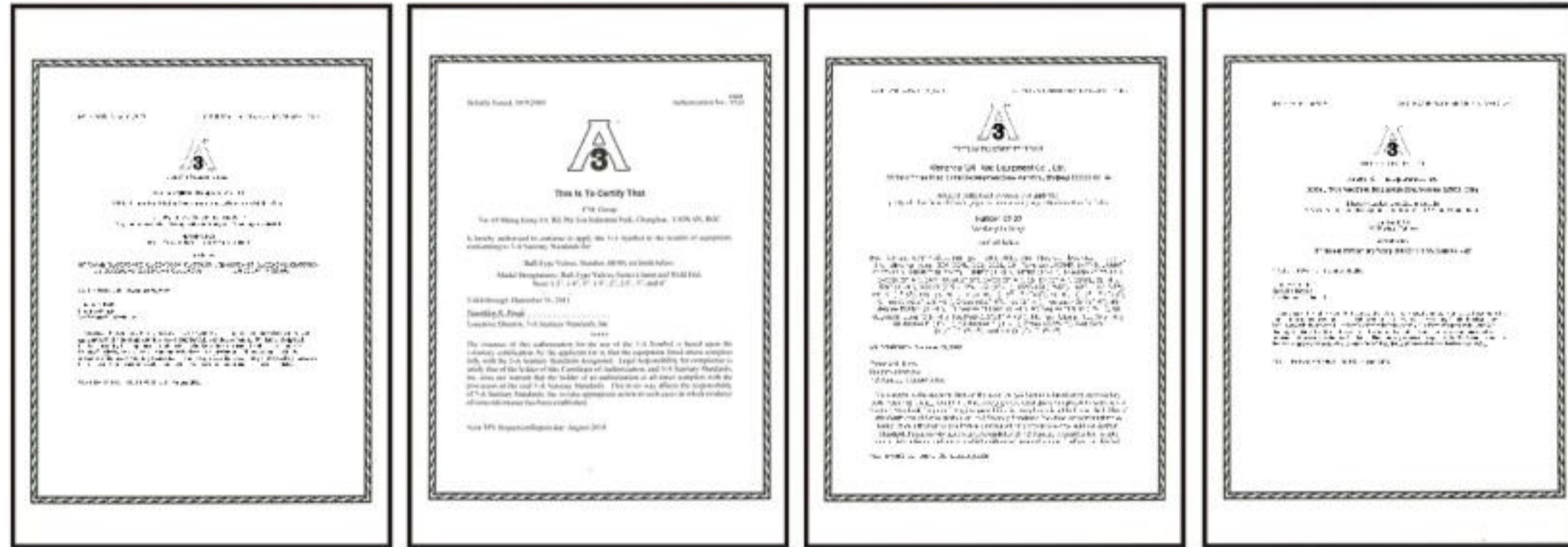
发货现场
THE DELIVERY ON SITE



齐力流体与世界同步 
 QL fluid synchronizing with the world 

标准的管理,
严谨的品质保证,
以及完整的责任

QL of consistency managed, rigorous quality guaranteed, and intact responsibility



3A NO.3599 CHECK VALVE

3A NO.3608 BALL VALVE

3A NO.1826 SANITARY FITTINGS

3A NO.3585 METAL TUBING



ISO CERTIFICATE



ISO CERTIFICATE

目录
CONTENTS

阀门系列 VALVE SERIES

1-10

1).蝶阀
BUTTERFLY VALVE

1-6

2).止回阀
CHECK VALVE

7

3).球阀
BALL VALVE

8

4).定制非标阀门
NON-STANDARD VALVE

9-10

管子 TUBE

11

管道配件系列 PIPE FITTINGS SERIES

12-37

1).视镜
SIGHT GLASS

12

2).卡箍
CLAMP

13-14

3).接头
FERRULES

15-18

4).管支架
PIPE HOLDER

19

5).由任
UNION

20-28

6).皮管接头
HOSE FITTINGS

29

7).管件
ELBOW/TEE/REDUCER

30-34

8).真空连接件
VACUUM COMPONENTS

35-37



蝶阀系列 Range of Butterfly Valve

- 诚信为本
- Honesty

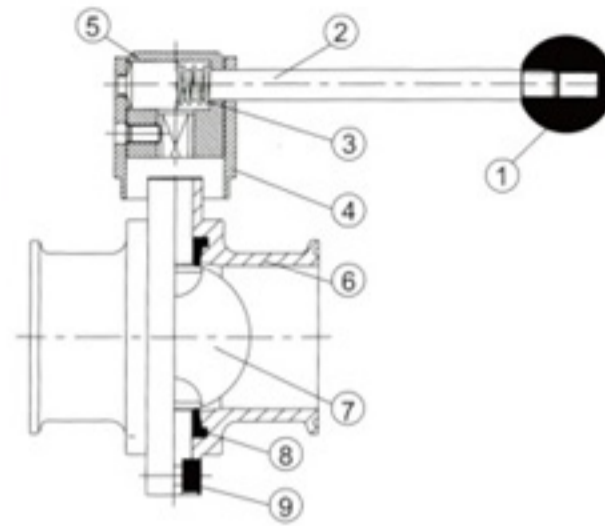
- 服务至上
- Service-oriented



锻造蝶阀 Full Forged Butterfly Valves



NO.	NAME
1	KNOB
2	STEEL-BAR
3	SPRING ST.ST
4	ST.ST
5	HOLDER
6	BODY
7	DISC
8	EPDM RUBBER SEAT
9	SCREW BOLT



Torque for Full Open/Close

1.0"	<1kgf-m
1.5"	<1kgf-m
2.0"	1.3kgf-m
2.5"	1.5kgf-m
3.0"	2.0kgf-m
4.0"	3.1kgf-m

*1kgf-m=9.8N.m=86.8 lbf-in=7.23lbf-ft

3A 快装4孔位蝶阀, 不锈钢手柄
3A Clamp End With St .St Pull Handle, 4 Position

Width Range of QL Butterfly Valve-C&G Type

Body : SS304,316,316L material out from precision CNC milling machined.

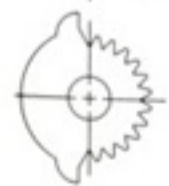
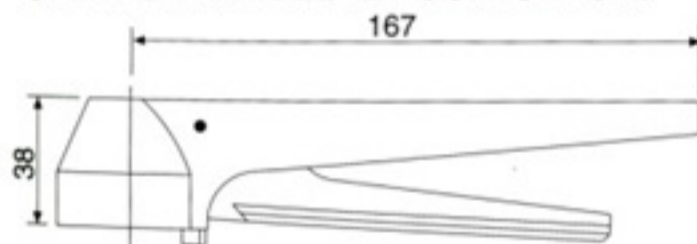
Body can be changeable and low torque.BS.SMS.DIN 3A Weld End and Male/Male End and Clamp End.

Disk : Out from full machined,high polished.Ra less than 0.6 μm .9.5mm and 8X12mm,12X12mm head for USA and Europe required. Electropolished and PTFE coating can be Required.

Handle: Different nylon re-force and stainless steel handle gripper,pull,Press type.

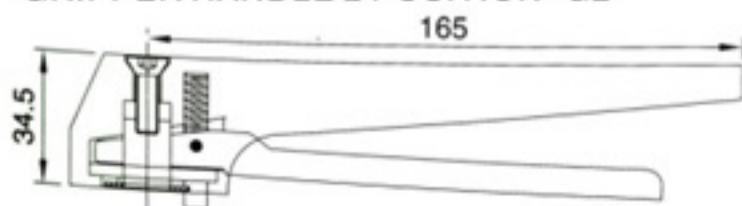
From 2 Position-12 Position, design for your wide range and beautiful choice.

12孔位手柄 GRIPPER HANDLE 12 POSITION-G12



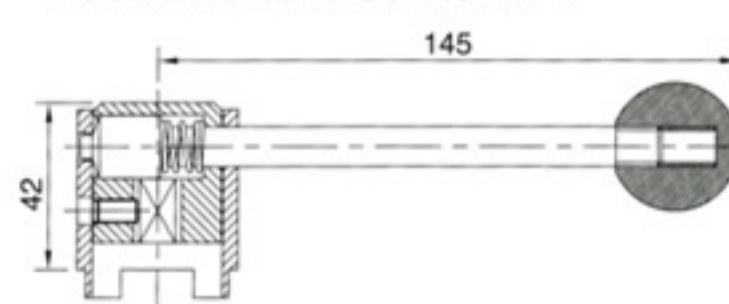
Can fit 9.4x9.4 and 12x8 or 12x12

两位手柄-G2 GRIPPER HANDLE 2 POSITION-G2



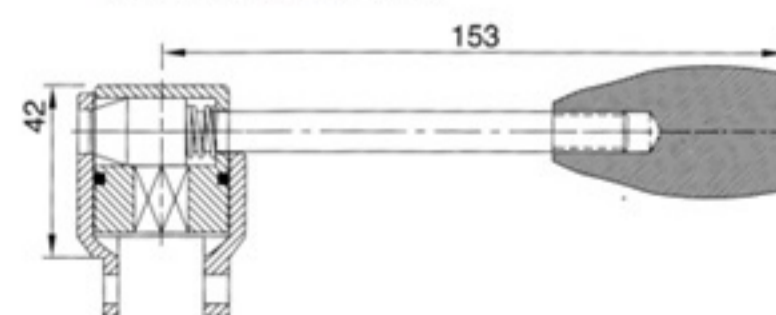
Can fit 9.4x9.4 and 12x8 or 12x12

4孔位/拉杆式手柄P4 PULL HANDLE 4 POSITION-P4

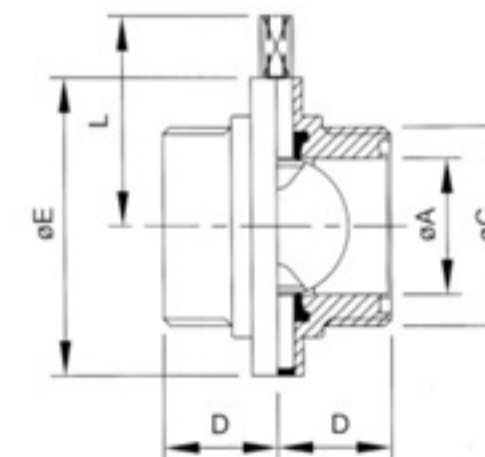
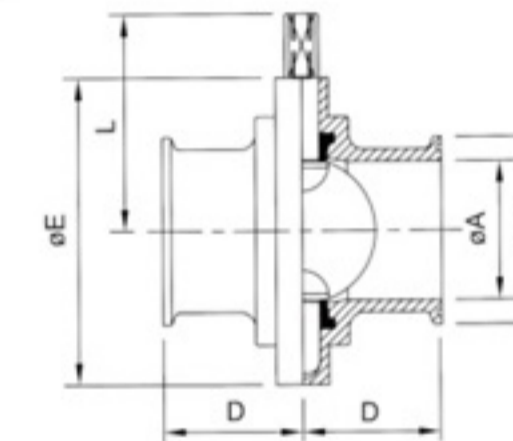
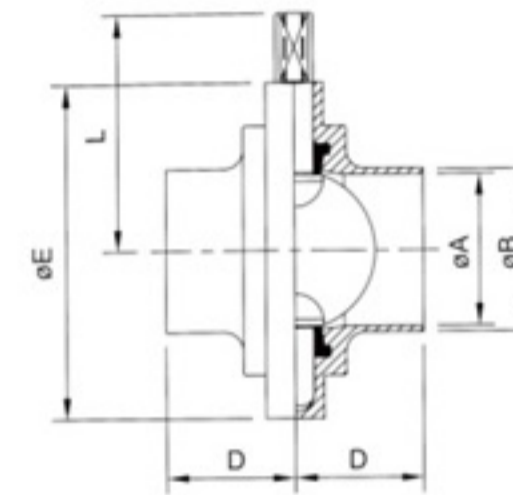


Fit 9.4x9.4 and 12x8 or 12x12

拉杆式手柄-P4L PULL HANDLE-P4L



Fit 9.4x9.4 and 12x8 or 12x12



3A/BS/SMS焊接蝶阀

3A/BS/SMS Weld/Weld Butterfly Valves

SIZE	ΦA	ΦB	SIZE	ΦA	ΦB	D	ΦE	L
1/2"	9.5	12.7	—	—	—	34	79	61
3/4"	15.8	19.05	—	—	—	34	79	61
1.0"	22.1	25.4	DN25	22.5	25	34	79	61
1.5"	34.8	38.1	DN38	35.4	38	38	85	64.3
2.0"	47.5	50.8	DN51	48	51	40	105	74.3
2.5"	60.2	63.5	DN63	60.2	63.5	40	112	77.6
3.0"	72.2	76.2	DN76	72.1	76.1	41	125	84.8
4.0"	97.6	101.6	DN104	100	104	44	157	101.7
6.0"	146.8	152.4	—	—	—	57	214	138.9

DIN焊接蝶阀

DIN Weld/Weld Butterfly Valves

SIZE	ΦA	ΦB	D	ΦE	L
DN28	25	28	34	79	61
DN34	31	34	38	85	64.3
DN40	37	40	38	90	74.3
DN50	49	52	40	105	77.6
DN65	66	70	41	125	84.8
DN85	81	85	42	137	91.6
DN104	100	104	44	157	101.7

3A快装式蝶阀

3A Clamp/Clamp Butterfly Valves

SIZE	ΦA	ΦB	D	ΦE	L
1/2"	9.5	25.2	34	79	61
3/4"	15.8	25.2	34	79	61
1.0"	22.1	50.5	33	79	61
1.5"	34.8	50.5	33	85	64.3
2.0"	47.5	64.0	35	105	74.3
2.5"	60.2	77.5	35	112	77.6
3.0"	72.2	91.0	38	125	84.8
4.0"	97.6	119.0	38	157	101.7
6.0"	146.8	166.8	57	213	138.9

SMS螺纹蝶阀

SMS Male/Male Butterfly Valves

SIZE	ΦA	C	D	ΦE	L
DN25	22.5	RD40X1/6	34	79	61
DN38	35.4	RD60X1/6	38	85	64.3
DN51	48	RD70X1/6	40	105	74.3
DN63	60.2	RD85X1/6	40	112	77.6
DN76	72.1	RD98X1/6	41	125	84.8
DN104	100	RD125X1/4	50	157	101.7



气动蝶阀

Auto control Actuator For Butterfly valve

- 诚信为本
- Honesty

- 服务至上
- Service-oriented



酒用蝶阀和球阀

Wine Butterfly Valves and Ball Valves

气动蝶阀 Actuator for Butterfly Valve

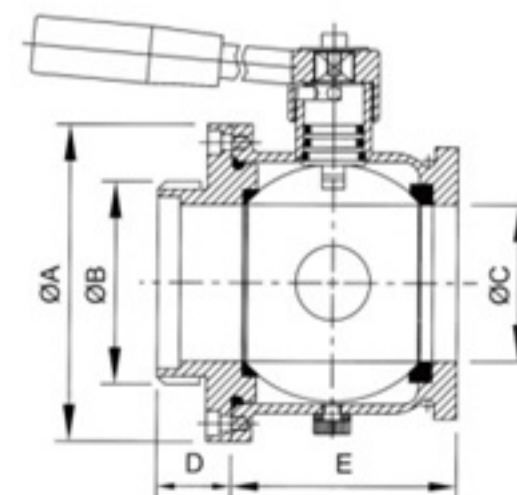
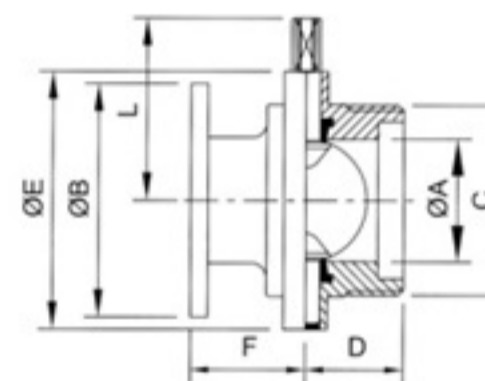
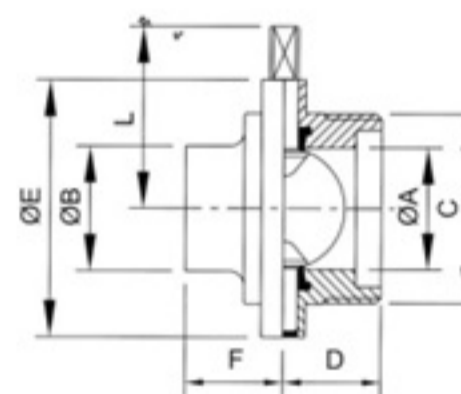
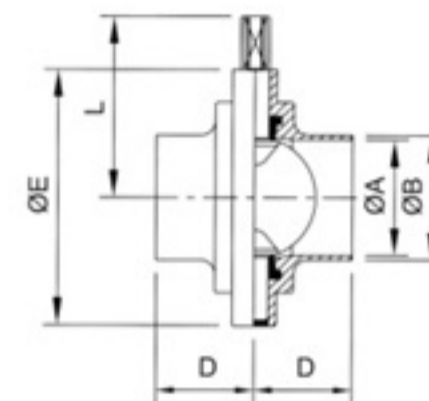


多功能蝶阀自动控制器 auto control actuator for butterfly valve



Operation instruction(使用说明)

- 1.C3 Actuator apply to butterfly valve in size 1"-3" of the disc head DIA. 12mm X8mm.(other size can be required)
- 2.Signal transfer: can be connect with M18 or M12 screw proximity switch(PNP or NPN)
- 3.Air/Air(double effect) actuator or air/spring(single effect) actuator are available.
- 4.Accessories:adapter:1pc; M6X35 screw:2pcs; washer:4pcs; M6 nut:2pcs;1/8PT quick coupler:1pc



酒用焊接蝶阀 Wine Weld/Weld Butterfly Valves

SIZE	ΦA	ΦB	D	ΦE	L
DN40/43	40	43	37	90	61
DN50/53	50	53	40	105	64.3
DN60/63	60	63	40	112	74.3
DN70/73	70	73	41	125	77.6
DN80/83	80	83	40	137	84.3
DN100/103	100	103	44	157	101.6

酒用焊接蝶阀 Wine Weld/Male Butterfly Valves

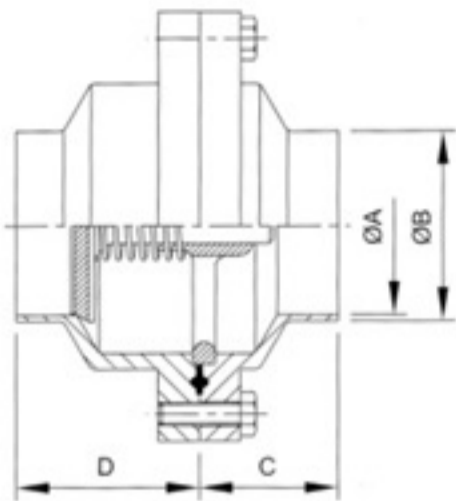
SIZE	ΦA	ΦB	C	D	ΦE	F	L
DN40/43	40	43	55x3	37	90	37	61
DN50/53	50	53	67x3	40	105	40	64.3
DN60/63	60	63	79x3.5	40	112	40	74.3
DN70/73	70	73	90x3.5	41	125	41	77.6
DN80/83	80	83	102x4	40	137	40	84.3
DN100/103	100	103	125x4	45	157	44	101.6

螺纹/法兰蝶阀 Wine Male/Flange Butterfly Valves

SIZE	ΦA	ΦB	C	D	ΦE	F	L
DN40/43	40	100	55x3	37	90	37	61
DN50/53	50	100	67x3	40	105	40	64.3
DN60/63	60	120	79x3.5	40	112	40	74.3
DN70/73	70	120	90x3.5	41	125	41	77.6
DN80/83	80	140	102x4	40	137	40	84.3
DN100/103	100	140	125x4	44	157	55	101.6

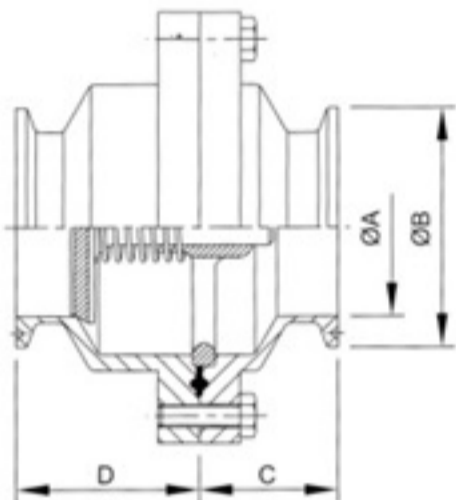
螺纹/法兰球阀 Wine Ball Valves Male/Flange

SIZE	A	B	C	D	E
DN43	94	54.5	40	32.6	72
DN53	105	66.5	50	33	79
DN73	140	89.5	69	33	100



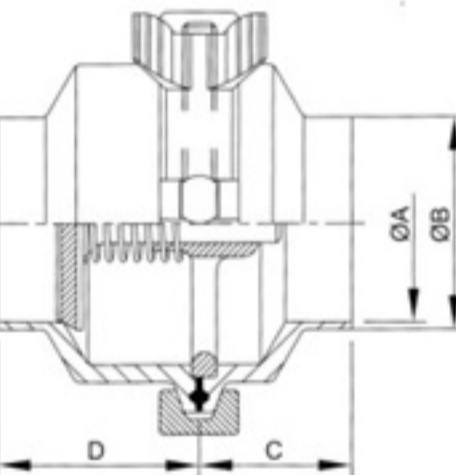
焊接止回阀
Check Valve Middle Flange/Weld END

3A/BS	ΦA	ΦB	DIN	ΦA	ΦB	SMS	ΦA	ΦB	C	D
1/2"	9.4	12.7							34	23
3/4"	15.8	19.05							34	23
1.0"	22.2	25.4	DN25	25	28	DN25	22.5	25	34	48
1.5"	34.9	38.1	DN32	31	34	DN38	35.5	38	36	48
2.0"	47.6	50.8	DN40	37	40	DN51	48.5	51	36	48
2.5"	60.3	63.5	DN50	49	52	DN63	60.3	63.5	36	48
3.0"	73	76.2	DN65	66	70	DN76	72.1	76.1	36	48
4.0"	97.6	101.6	DN100	100	104	DN104	100	104	47	54



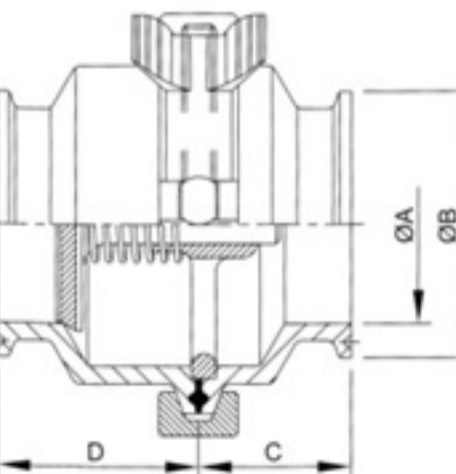
快装止回阀
Check Valve Middle Flange/Clamp END

3A/BS	ΦA	ΦB	DIN	ΦA	ΦB	C	D
1/2"	9.5	25.2				39.5	28.5
3/4"	15.9	25.2				39.5	28.5
1.0"	22.1	50.5	DN25	22.5	50.5	34	48
1.5"	34.8	50.5	DN38	35.5	50.5	36	48
2.0"	47.5	64	DN51	48.5	64	36	48
2.5"	60.2	77.5	DN63	60.3	77.5	36	48
3.0"	72.9	91	DN76	72.1	91	36	48
4.0"	97.6	119	DN104	100	119	47	54



一边快装一边焊接止回阀
Check Valve Middle Clamp/Weld END

3A/BS	ΦA	ΦB	DIN	ΦA	ΦB	SMS	ΦA	ΦB	C	D
1/2"	9.5	12.7							24	34
3/4"	15.8	19.05							24	34
1.0"	22.1	25.4	DN25	25	28	DN25	22.5	25	34	48
1.5"	34.8	38.1	DN32	31	34	DN38	35.5	38	36	48
2.0"	47.5	50.8	DN40	37	40	DN51	48.5	51	36	48
2.5"	60.2	63.5	DN50	49	52	DN63	60.3	63.5	36	48
3.0"	72.9	76.2	DN65	66	70	DN76	72.1	76.1	36	48
4.0"	97.6	119	DN100	100	104	DN104	100	104	47	54



两端快装止回阀
Check Valve Middle Clamp/Clamp END

3A/BS	ΦA	ΦB	DIN	ΦA	ΦB	SMS	ΦA	ΦB	C	D
1/2"	9.5	25.2							28.5	39.5
3/4"	15.8	25.2							28.5	39.5
1.0"	22.1	50.5	DN25	25	50.5	DN25	22.5	50.5	34	48
1.5"	34.8	50.5	DN32	31	50.5	DN38	35.5	50.5	36	48
2.0"	47.5	64	DN40	37	64	DN51	48.5	64	36	48
2.5"	60.2	77.5	DN50	49	77.5	DN63	60.3	77.5	36	48
3.0"	72.9	91	DN65	66	91	DN76	72.1	91	36	48
4.0"	97.6	119	DN100	100	119	DN104	100	119	47	54

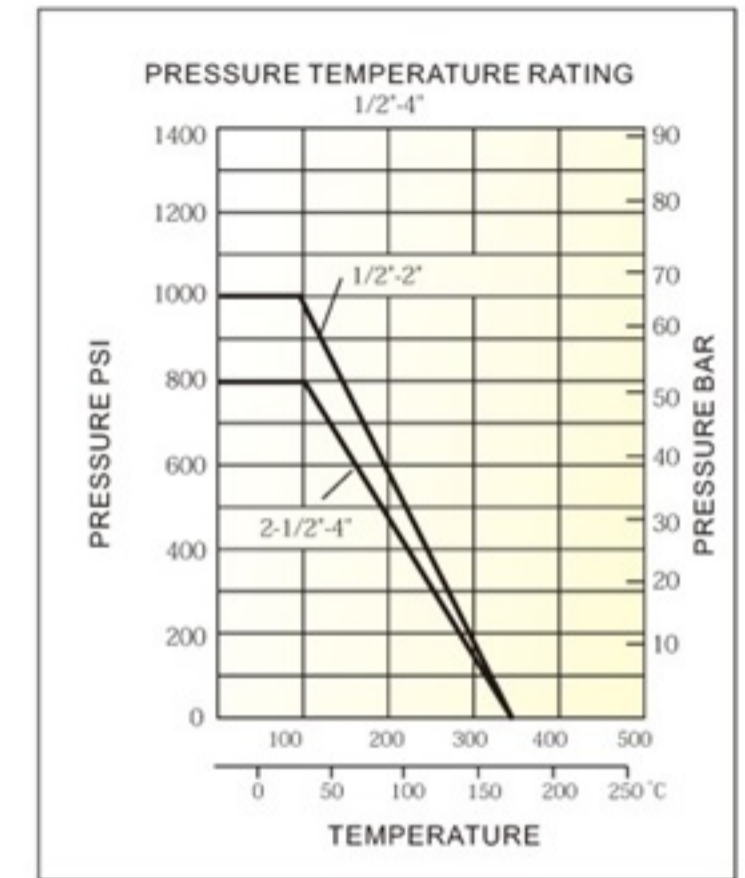
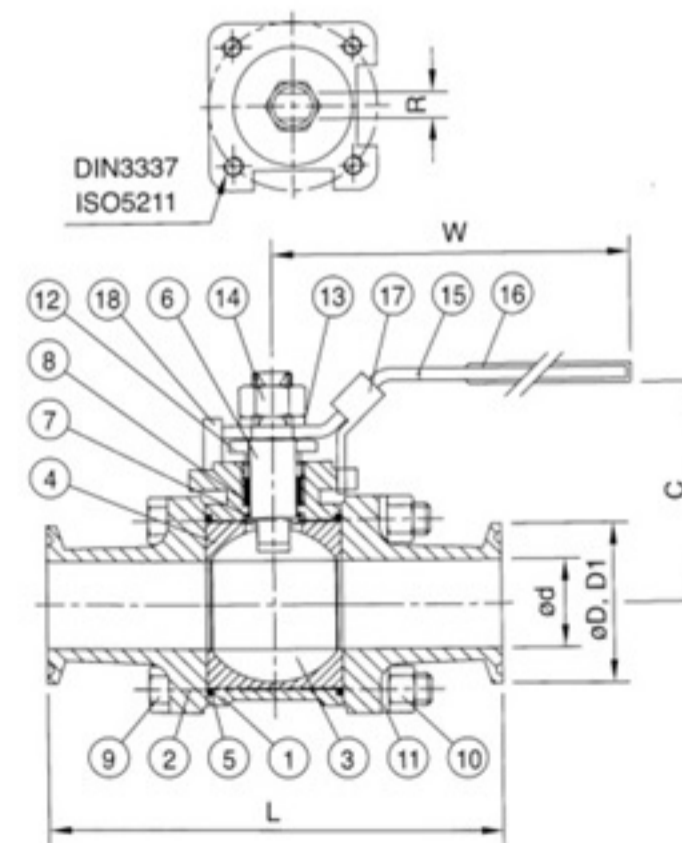


全包式球阀

- Locking device can be required.
- 100% air tested under water at 100%psi, open and closed positions
- Hydrostatic test pressure 1/4"-2" 1,500psi, 2 1/2"-4" 1,200psi.

Standard End :Weld & Clamp-End

Other SMS .DIN. RJT.IDF
Male/Male can be required.



Specifications for Clamp & Weld End

SIZE	DN	ISO5211	C	L	W	Φd	ΦD	ΦD1	R	L1
1/2"	15	F03	55	89	132	9.5	25.4	12.7	5	32.75
3/4"	20	F03	60	101	131.5	15.9	25.4	19.05	5	36.5
1"	25	F04	69	114	165	22.2	50.4	25.4	6.5	40
1-1/2"	40	F05	84	140	194.3	35	50.4	38.1	8.5	43.5
2"	50	F05	92	156	194.3	47.6	63.9	50.8	8.5	45.75
2-1/2"	65	F07	126.8	197	252	60.3	77.5	63.5	12	56
3"	80	F07	136	229	252	73	90.9	76.2	12	64.5
4"	100	F10	158.8	242.7	333	97.4	118.9	101.6	16	60.6

*ØD=Clamp End *ØD=Weld End

NO	PART NAME	MATERIAL
1	BODY	ASTM-A351-CF8M
2	CAP	ASTM-A351-CF8M
3	BALL	A351-CF8M
4	SEAT	PTFE
5	GASKET	PTFE
6	STEM	316
7	THRUST WASHER	PTFE
8	STEM PACKING	PTFE
9	BOLT	304
10	HEX NUT	304
11	BOLT WASHER	304
12	GLAND	304
13	WASHER	304
14	NUT	304
15	HANDLE	304
16	PLASTIC COVER	PLASTIC
17	LOCK DEVICE	304
18	STOP PIN	304



齐力流体与世界同步
QL fluid synchronizing with the world

客户定制非标产品
Non-standard products



CLAMPED CHECK VALVE WITH RJT NUT AND DRAIN



SIGHT GLASS STYLE BUTTERFLY VALVE



Sanitary Cartridge (SC) Check valve



Clamp "L" Body Relief Valve



Air Release Valve



Air Blow Check Valve



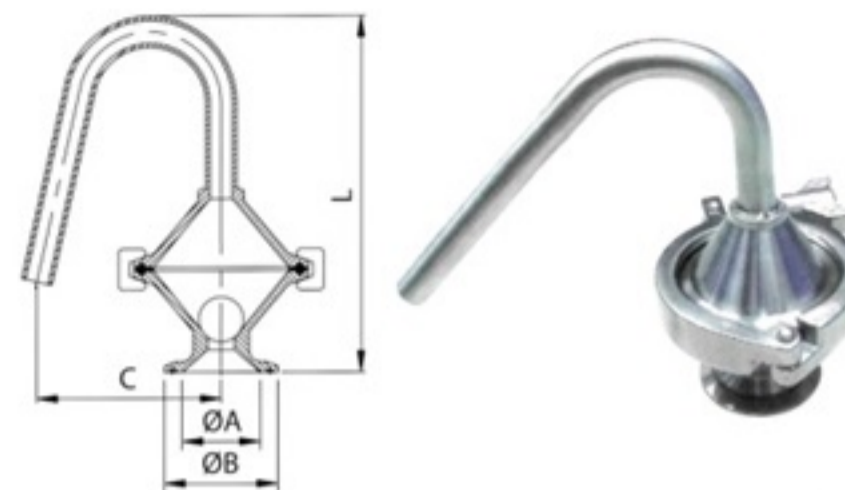
Tee Style Butterfly Valve with One Pulling Handle



CHECK VALVE



Tank vent



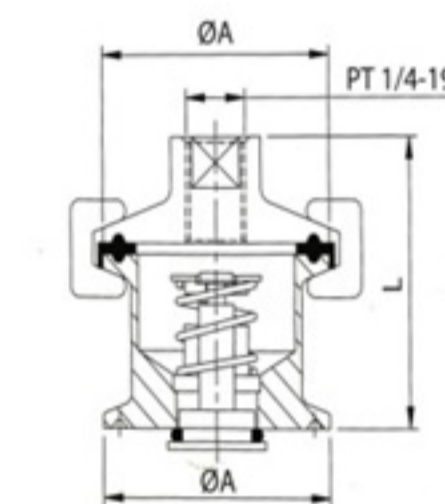
- Material: SUS304 or SUS316L Forged or Solid Bar Body.
- Surface: Polished, Electric Polished. ID Ra<0.8um. or 0.4um.
- Can be make your requirement design.

空气减压阀
Relief out over-load Air Pressure on your Tank or Pipe Line.
Air Release Valve

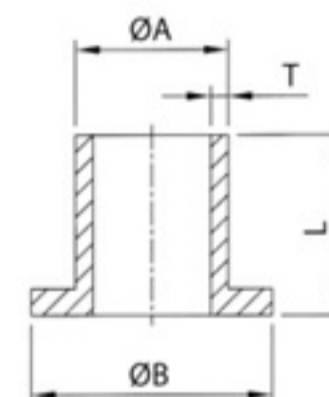
SIZE	ΦA	ΦB	ΦC	L
1.0"	22.1	50.5	82	158
1.5"	34.8	50.5	82	158
2.0"	47.5	64	82	158

For Air Clean out the pipe Line.
Air Blow Valve

SIZE	ΦA	ΦB
1.0"/1.5"	50.5	55
2.0"	34.8	55

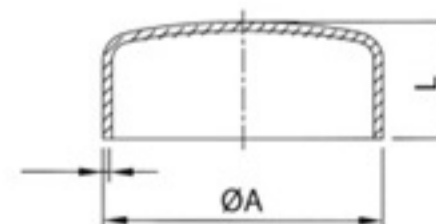


Kinds of Parts



14VB 接头
14VB STUB END

SIZE	ΦA	ΦB	ΦT	L
1.0"	25.4	50.8	1.65	41.3
1.5"	38.1	73	1.65	44.5
2.0"	50.8	92.1	1.65	38.1
2.5"	63.5	104.8	1.65	50.8
3.0"	76.2	127	1.65	57.2
4.0"	101.6	157.2	2.1	66.7
6.0"	152.4	215.9	2.77	76.2



16W 封头
16W CAP

SIZE	ΦA	T	L
1.0"	25.4	1.65	19.1
1.5"	38.1	1.65	14.2
2.0"	50.8	1.65	19.1
2.5"	63.5	1.65	25.4
3.0"	76.2	1.65	31.8
4.0"	101.6	2.1	38.1



管道系列 Width Range Tube Line

- 诚信为本
- Honesty

- 服务至上
- Service-oriented



卫生级视镜 Range of Hygienic Sight Glass

Sanitary Tubes For Biochemistry, Pharmaceutical, Fild...etc.



BPE standard			SMS standard			IDF standard			3A sanitary standard			DIN 11850		
SIZE	OD	T	SIZE	O.D	T	SIZE	O.D	T	SIZE	O.D	T	SIZE	O.D	T
1/2"	12.7	1.65												
1.0"	25.4	1.65	25	25	1.25	1.0"	25.4	1.2			25.4	1.65	25	1
													28	1.5
			32	32	1.25	1.25"	31.8	1.2					32	34
														1.5
1.5"	38.1	1.65	38	38	1.25	1.5"	38.1	1.2			38.1	1.65	40	1
													40	1.5
2.0"	50.8	1.65	51	51	1.25	2.0"	50.8	1.5			50.8	1.65	50	1
													50	1.5
2.5"	63.5	1.65	63.5	63.5	1.5	2.5"	63.5	2			63.5	1.65	65	2
3.0"	76.2	1.65	76	76.1	1.6	3.0"	76.3	2			76.2	1.65	80	2
4.0"	101.6	2.11	104	104	2	4.0"	101.6	2			101.6	1.65	100	2
													104	2
														2.11

QL Sanitary for food, and pharmaceutical industry

Material: ASTM 304, 304L, 316L

Spec: ASTM A269, A270.

Surface & Roughness:

1. OD/ID Pickle ($Ra \leq 1.0 \mu m$)

2. Polished:

(1) ID Polished to 180Grit ($RA \leq 0.8 \mu m$)

(2) ID Polished to 240Grit ($RA \leq 0.6 \mu m$)

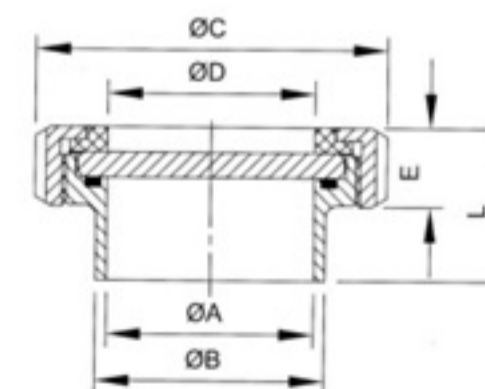
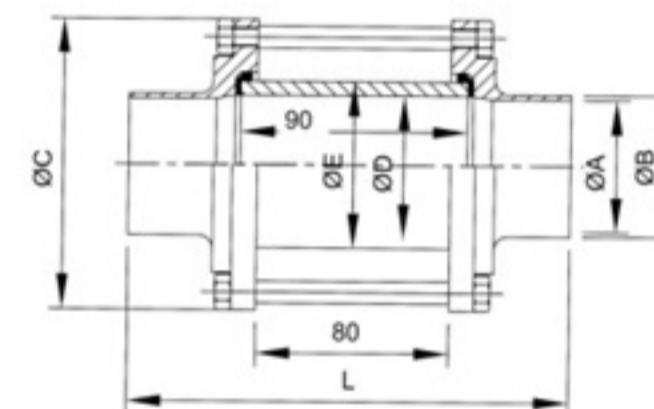
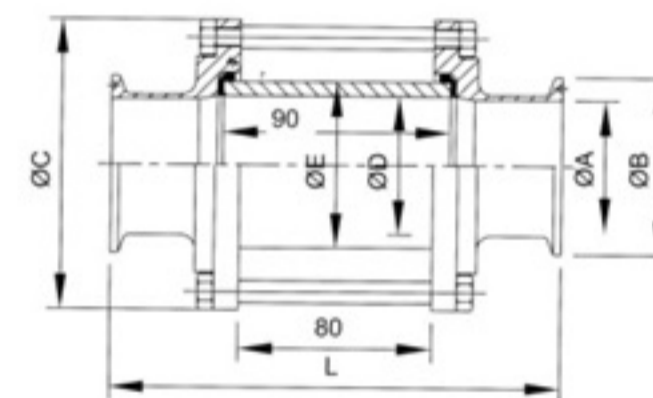
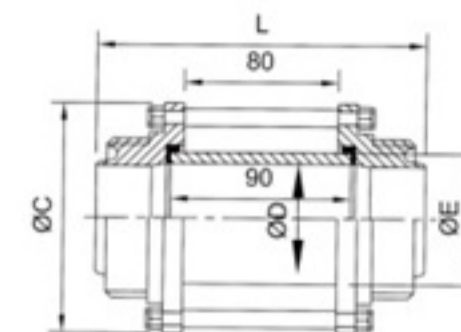
(3) ID Polished to 320Grit ($RA \leq 0.5 \mu m$)

(4) ID Polished to 420Grit ($RA \leq 0.4 \mu m$)

(5) Electro polished:

(5-1) ID Electro polished ($Ra \leq 0.5 \mu m$).

(5-2) ID Electro polished ($Ra \leq 0.38 \mu m$).



RJT, SMS, DIN, IDF-螺纹视镜

RJT, SMS, DIN, IDF-Male End Sight Class

SIZE	L	ØC	ØD	ØE
25	148	79	26	32
38	156	85	34	40
51	160	105	50	60
63.5	160	112	65	75
76	162	125	75.4	85
104	168	157	100	110

3A/BS快装视镜

3A/BS Clamp End Sight-glass

SIZE	ØA	ØB	ØC	ØD	ØE	L
1.0"	22.1	50.5	79	26	32	143
1.5"	34.8	50.5	85	34	40	146
2.0"	47.5	64	105	50	60	150
2.5"	60.2	77.5	112	65	75	150
3.0"	72.9	91	125	75.4	85	156
4.0"	97.6	119	157	100	110	156

3A/BS焊接视镜

3A/BS Weld End Sight-glass

SIZE	ØA	ØB	ØC	ØD	ØE	L
1/2"	9.4	12.7	47	10.2	15	106
3/4"	15.75	19.05	47	17	22	106
1.0"	22.1	25.4	79	26	32	148
1.5"	34.8	38.1	85	34	40	156
2.0"	47.5	50.8	105	50	60	160
2.5"	60.2	63.5	112	65	75	160
3.0"	72.9	76.2	125	75.4	85	162
4.0"	97.6	101.6	157	100	110	167

SMS焊接视镜

SMS Weld End Sight-glass

SIZE	ØA	ØB	ØC	ØD	ØE	L
DN25	22.5	25	79	26	32	148
DN38	35.4	38	85	34	40	156
DN51	48	51	105	50	60	160
DN63.5	60.2	63.5	112	65	75	160
DN76	72	76	125	75.4	85	162
DN104	100	104	157	100	110	168

视镜接头

Weld End Sight-glass

SIZE	ØA	ØB	ØC	ØD	ØE	L
DN65	66	73	112	66	25	48.5
DN80	80	93	127	82	29	52.5
DN100	98	113	148	100	31	60.5

卫生级视镜 Range of Hygienic Sight Glass



齐力卫生级视镜系列

QL Range Of Hygienic Sight Glass:

Glass: Clean, High Press Glass, Max Work 10 bar. Can be changeable.

Body: SUS304, 316, 316L Precision Machined Body. With Width Connection End. 3A, DIN, SMS, RJT, IDF Male/Male, Weld and Female End.

Screw Blot: Full Stainless Steel.

Seal: EPDM, Silicon and Viton.



卡箍系列 Heavy Duty Clamp-ring(mm)

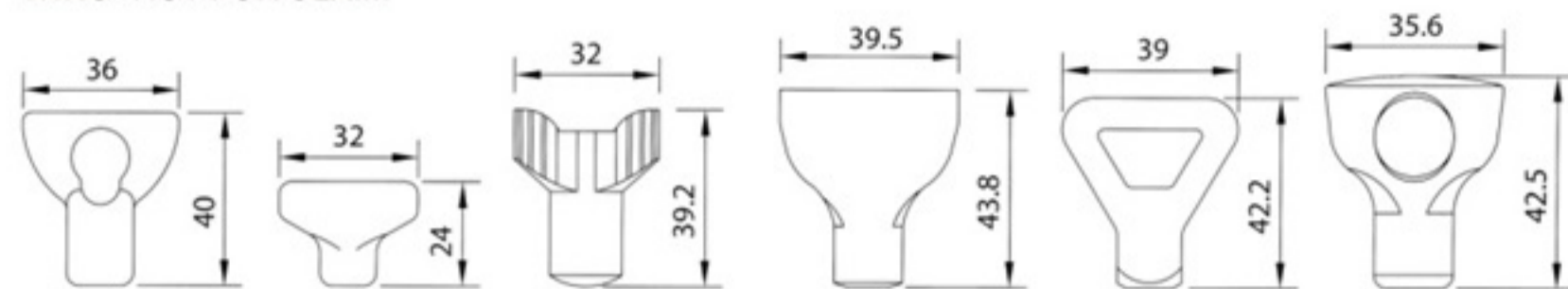
- 诚信为本
- Honesty

- 服务至上
- Service-oriented

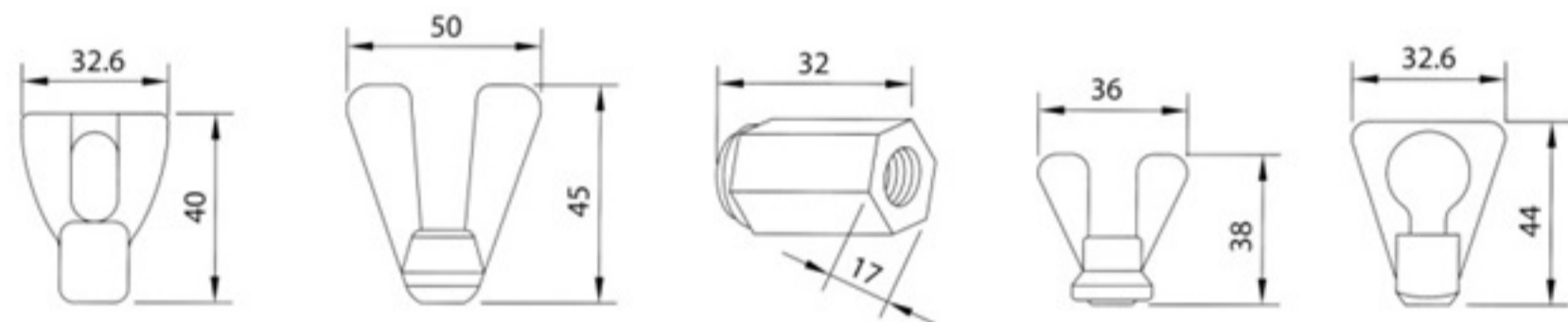


卡箍系列 Heavy Duty Clamp-ring(mm)

各种卡箍螺母 WING-NUT FOR CLAMP

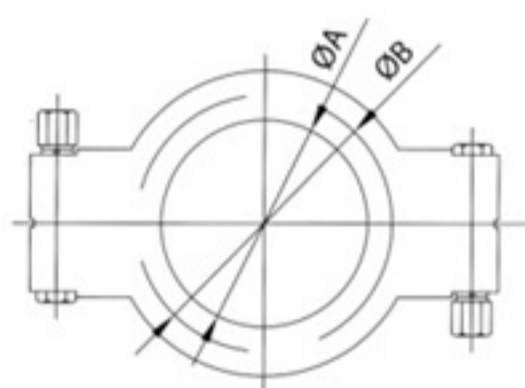


13MHH-8 13MHH-10 13MHH-11 13MHH-12 13MHH-13 13MHH-14

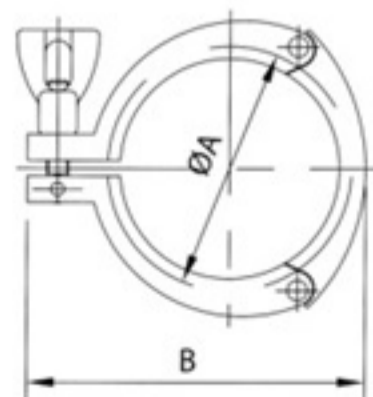


13SP-2 F2 H17 T1 G1-M10

高压卡箍螺杆带黄铜螺母 13MHP HIGH PRESSURE CLAMP WITH SCREW BOLT BRASS NUT

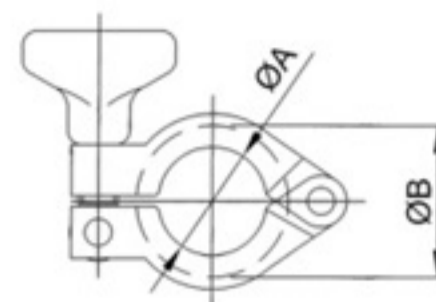


SIZE	ØA	ØB
3/4"	20	28
1.5"	43.32	52
2.0"	56.44	65.5
2.5"	69.54	79
3.0"	77.56	92.5
4.0"	108.86	120.5
6.0"	158	170
6.5"	173	186.2
10"	258	272.8
12"	309	327.6



3片式卡箍 13MHHS 3 PLECES CLAMP

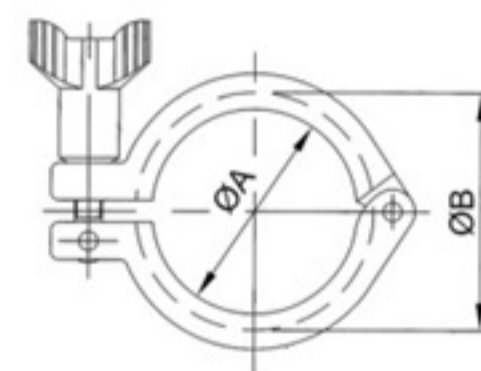
SIZE	ØA	ØB
1.5"	54	80
2.0"	67.5	94
2.5"	80.9	109
3.0"	94	126
4.0"	122.4	154



单销卡箍 13MHH & 13MHH & 13SF SIZE: 1/2"~3/4"

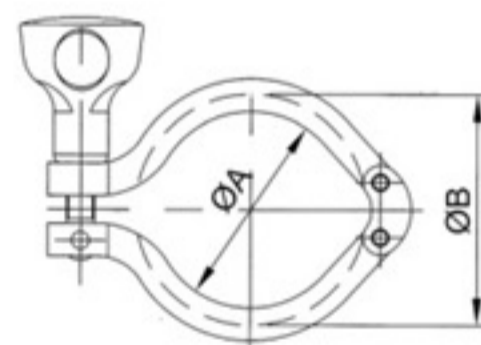
双销卡箍 13MHH Heavy Duty Single Pin Clamp

SIZE	ØA	ØB
1/2"-3/4"	20	28
A37	27.8	37
1.5"	44.4	53.6
2.0"	57.8	67
2.5"	71.4	80.6
3.0"	84	94.2
3.5"	99	109.2
4.0"	110	122.2
4.5"	123	133.2
6.0"	155.4	170.4
8.0"	205	220



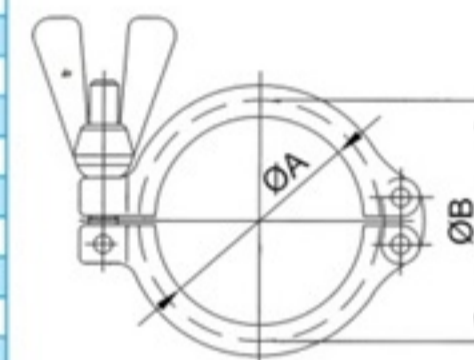
13MHH Heavy Duty Double pin Clamp

SIZE	ØA	ØB
1/2"-3/4"	20	28
1.5"	43.6	53.6
2.0"	57	67
2.5"	70.6	80.6
3.0"	84	94
4.0"	112	122
6.0"	155	170
8.0"	205	220.8



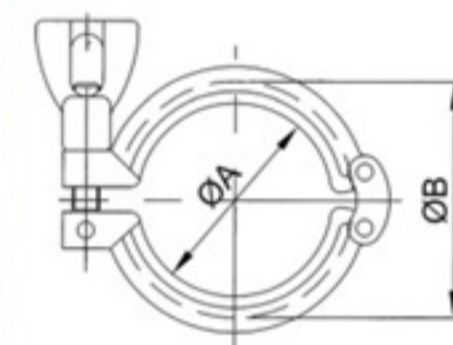
13CS Double Pin Clamp

SIZE	ØA	ØB
3/4"	20.58	28.34
DN10-20	27.2	37
1.5"	41.02	53.52
DN25-40	44.5	54.5
2.0"	54.54	67.04
DN50	57	68
2.5"	68.02	80.52
3.0"	81.52	94.02
DN65	84	95
DN80	99	110
4.0"	109.54	122.04
DN100	112	123
DN115	123	134
DN125	144	159
6.0"	157.6	175.1
DN150	172	187
8.0"	207.4	225.9
DN200	222.5	237.5
DN250	257	272
DN300	308	323



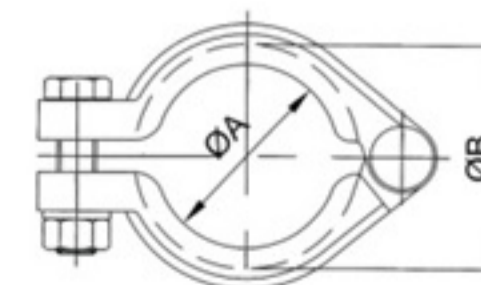
13SF Heavy Duty Double Pin Clamp

SIZE	ØA	ØB
1/2"-3/4"	20	28
A37	27.5	42.9
1.5"	45	53.6
2.0"	59	72
2.5"	67	84
3.0"	85	98
4.0"	114	127



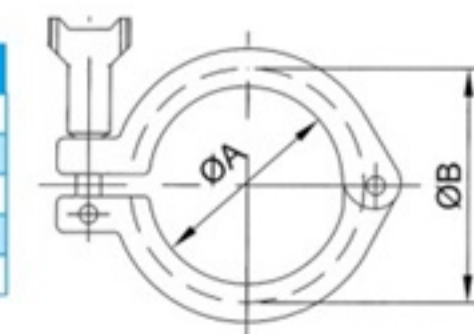
13IU Bolted Clamp

SIZE	ØA	ØB
1.5"	45	55
2.0"	63	73
2.5"	74	89
3.0"	88	102
4.0"	111	128



13ISI-line Clamp

SIZE	ØA	ØB
1.0"-1.5"	53.4	83.8
2.0"	72.2	111
2.5"	88.1	121.4
3.0"	102.4	136.1
4.0"	127.8	162
6.0"	195.3	242.1





接头系列 Ferrule Adapter(mm)

- 诚信为本
- Honesty

- 服务至上
- Service-oriented

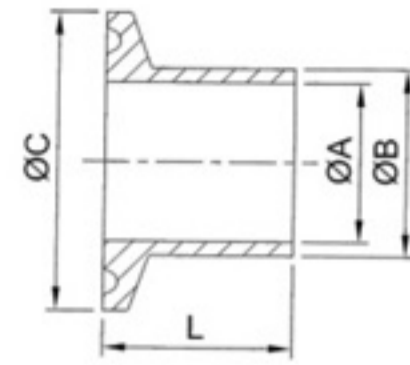


接头系列 Ferrule Adapter(mm)

3A/SMS 接头
Welding Ferrule
3A/SMS

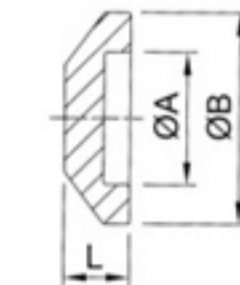
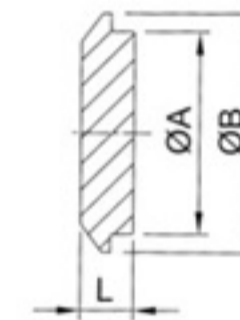
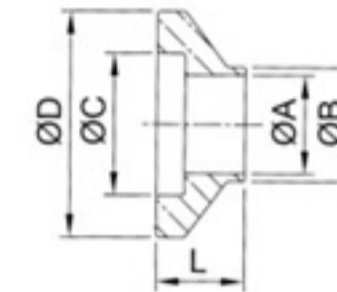
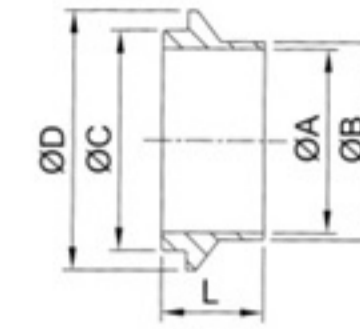
短 中 长
14WMP 14MMP 14AMP

SIZE	ΦA	ΦB	ΦC	L	L	L
1/4"	3.9	6.35	25	12.7	21.5	28.6
1/2"	9.4	12.7	25	12.7	21.5	28.6
DN15	9.7	12.7	25.4	12.7	21.5	28.6
3/4"	15.75	19.05	25	12.7	21.5	28.6
DN20	15.95	19.05	25.4	12.7	21.5	28.6
1"	22.1	25.4	50.5	12.7	21.5	28.6
DN25	22.5	25	50.5	—	21.5	28.6
1.25"	28.45	31.75	50.5	12.7	21.5	28.6
1.5"	34.8	38.1	50.5	12.7	21.5	28.6
DN38	35.5	38.1	50.5	—	21.5	28.6
2.0"	47.5	50.8	64	12.7	21.5	28.6
DN51	48.5	51	64	—	21.5	28.6
2.5"	60.2	63.5	77.5	12.7	21.5	28.6
DN63.5	60.5	63.5	77.5	—	21.5	28.6
DN76	72.9	76.1	91	—	21.5	28.6
3.0"	72.9	76.2	91	12.7	21.5	28.6
DN104	100	104	119	—	21.5	28.6
4.0"	97.4	101.6	119	15.8	21.5	28.6
6.0"	146.86	152.5	166.87	—	21.5	28.6 or 38.1
8.0"	197.66	203.3	217.67	—	21.5	28.6 or 38.1
10"	247.2	254	268.47	—	21.5	28.6 or 38.1
12"	298	304.8	319.27	—	21.5	28.6 or 38.1



ISO接头
ISO Ferrule

SIZE	ΦA	ΦB	ΦC	L	L
DN8	10.3	13.5	34	21.5	28.6
DN12	14	17.5	34	21.5	28.6
DN15	18.1	21.6	34	21.5	28.6
DN20	23.7	26.9	50.5	21.5	28.6
DN25	30.5	33.7	50.5	21.5	28.6
DN32	39.2	42.4	50.5	21.5	28.6
DN40	45.1	48.3	64	21.5	28.6
DN50	56.3	60.3	77.5	21.5	28.6
DN65	72.1	76.1	91	21.5	28.6
DN80	84.9	88.9	106	21.5	28.6
DN100	109.1	114.3	130	21.5	28.6
DN125	133.7	139.7	155	—	28.6
DN150	162.3	168.3	183	—	28.6
DN200	211.1	219.1	233.5	—	28.6



14WI-Ferrule Male

SIZE	ΦA	ΦB	ΦC	ΦD	L
1.0"	22.1	25.65	31.5	50.67	19.84
1.5"	34.8	38.35	44.2	50.67	23.8
2.0"	47.5	51.05	56.9	67.05	26.19
2.5"	60.2	63.75	69.6	84	29.36
3.0"	72.89	76.45	83.82	98.3	30.94
4.0"	97.38	101.85	109.14	123.7	34.11

15WI-Ferrule Female

SIZE	ΦA	ΦB	ΦC	ΦD	L
1.0"	22.1	25.65	31.88	50.67	19.84
1.5"	34.8	38.35	44.58	50.67	23.8
2.0"	47.5	51.05	57.28	67.05	26.19
2.5"	60.2	63.75	69.98	84	29.36
3.0"	72.89	76.45	84.2	98.3	30.94
4.0"	97.38	101.85	109.6	123.7	34.11

14WI-CAP Male

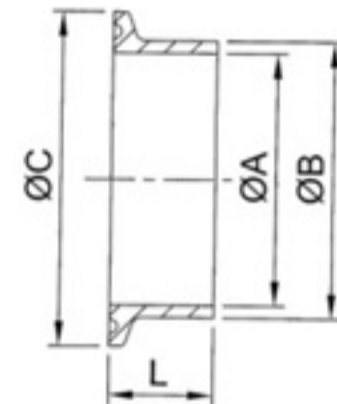
SIZE	ΦA	ΦB	L
1.0"	31.5	50.67	12.37
1.5"	44.2	50.67	12.37
2.0"	56.9	67.05	14.11
2.5"	69.6	84	18.72
3.0"	83.82	98.3	19.32
4.0"	109.14	123.7	19.32

15WI-CAP Female

SIZE	ΦA	ΦB	L
1.0"	31.88	50.67	12.75
1.5"	44.58	50.67	12.75
2.0"	57.28	67.05	17.66
2.5"	69.98	84	18.77
3.0"	84.2	98.3	19.37
4.0"	109.6	123.7	19.37

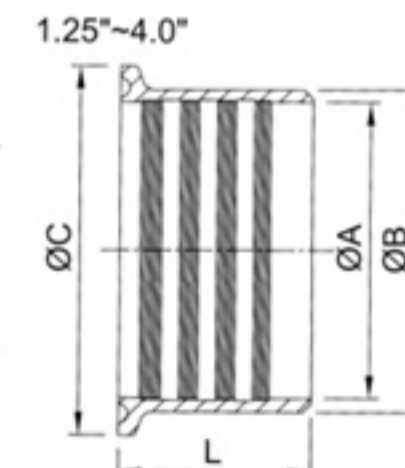
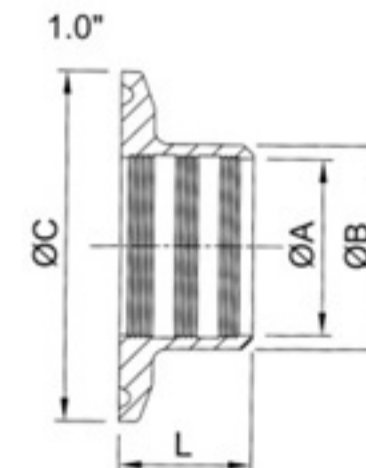
DIN接头
DIN Ferrule

SIZE	ΦA	DA	ΦB	ΦA	DB	ΦC	L	L
DN10	10	13	9	12	34	21.5	28.6	
DN15	16	19	15	18	34	21.5	28.6	
DN20	20	23	19	22	34	21.5	28.6	
DN28	26	29	25	28	50.5	21.5	28.6	
DN34	32	35	31	34	50.5	21.5	28.6	
DN40	38	41	37	40	50.5	21.5	28.6	
DN52	50	53	49	52	64	21.5	28.6	
DN70	66	70	66	70	91	21.5	28.6	
DN85	81	85	81	85	106	21.5	28.6	
DN101.6	97.6	101.6	97.6	101.6	119	21.5	28.6	
DN100	100	104	100	104	119	21.5	28.6	
DN125	125	129	125	129	155	21.5	28.6	
DN150	150	154	150	154	183	21.5	28.6	
DN200	200	204	200	204	233.5	—	28.6	
DN250	250	254	250	254	268.47	—	28.6	
DN300	300	304	300	304	319.27	—	28.6	



罐用接头
14MPW Ferrule For Tank

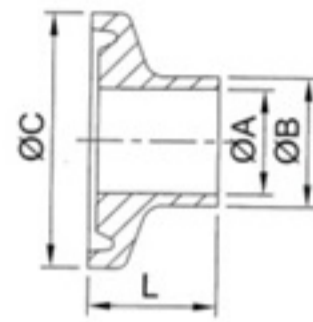
SIZE	ΦA	ΦB	ΦC	L
1/2"	8.15	12.75	25.2	54
3/4"	14.6	19.05	25.2	54
1.0"	22.1	29.5	50.5	41.3
1.5"	34.8	42.6	50.5	41.3
2.0"	47.5	55.7	64	44.5
2.5"	60.2	68.8	77.5	44.5
3.0"	72.9	81.9	91	46.1
4.0"	97.4	108.1	119	54
6.0"	146.25	157.3	166.87	63.5
8.0"	197.05	208.1	217.67	63.5



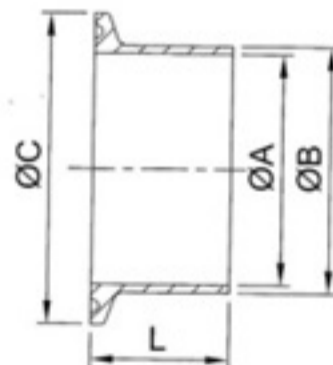
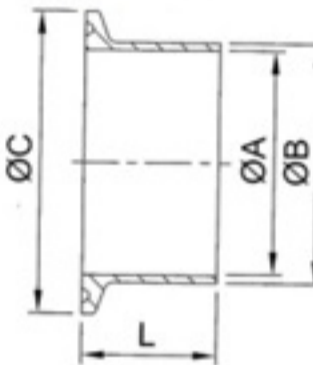
扩展接头
14RMP
3A-Recessless Ferrule

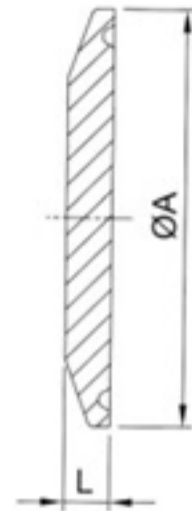
SIZE	ΦA	ΦB	ΦC	L
1.0"	25.5	29.5	50.5	19.1
1.25"	31.9	36.3	50.5	21.5
1.5"	38.2	42.6	50.5	28.6
2.0"	50.9	55.7	64	33.3
2.5"	63.6	68.8	77.5	34.9
3.0"	76.3	81.9	91	36.5
4.0"	101.7	108.1	119	38.1

1/2"~3/4"



1.0"~12"





快装堵头
BLANK 16AMP

3A	DIN	ISO	ΦA	L
1/2"-3/4"			25	6
A37			34	6.3
	DN10	DN8	34	6.3
	DN15	DN12	34	6.3
	DN20	DN15	34	6.3
1.0"	DN28	DN20	50.5	6.3
1.5"	DN34	DN25	50.5	6.3
	DN40	DN32	50.5	6.3
2.0"	DN52	DN40	64	6.3
2.5"	DN70	DN50	77.5	6.3
3.0"	DN80	DN65	91	6.3
	DN100	DN80	106	6.3
4.0"	DN100		119	7.9
		DN100	130	7.9
	DN125	DN125	155	7.9
6.0"			166.8	11.1
	DN150	DN150	183	11.1
8.0"			217.7	11.1
	DN200	DN200	233.5	11.1
10"			268.5	11.1
12"			319.3	11.1

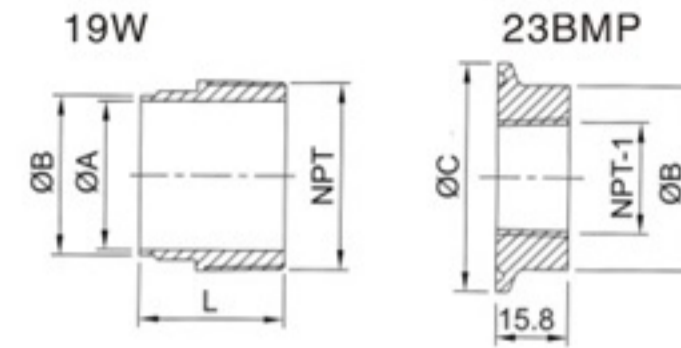
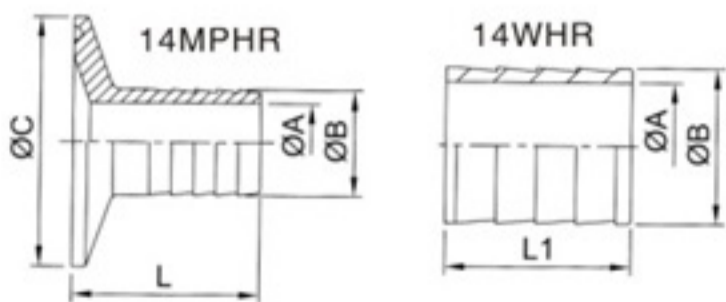
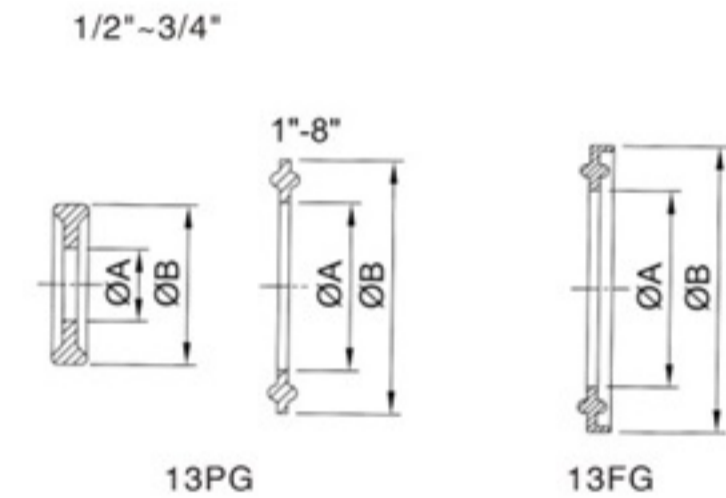
各种垫圈、EPDM、硅胶、氟橡胶、PTFE
Ferrule Gasket(EPDM,SILICON,VITON,PTFE)
PLAIN TYPE 13PG Flang type 13FG

SIZE	ΦA	ΦB
1/2"	9.9	21.8
3/4"	16.3	21.8
A37	15.5	33
1.0"	22.7	50
1.2"	29.5	50.5
1.5"	35.9	50
2.0"	48.6	63.5
2.5"	61.3	76.2
3.0"	74	88.9
4.0"	98.6	118
6.0"	147.8	165
8.0"	196.6	216

SIZE	ΦA	ΦB
1.0"	22.8	52.7
1.5"	35.8	52.7
2.0"	48.8	66.2
2.5"	60.5	79.7
3.0"	73.1	93.2
4.0"	97.8	121.2
6.0"	148	169.1
10"	249	270.7
12"	300	321.5

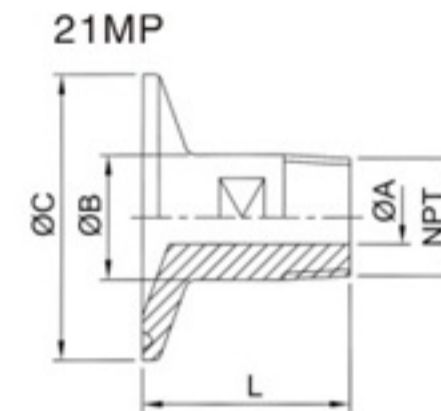
软管接头
14MPHR. 14WHR Hose Adapter

SIZE	ΦA	ΦB	ΦC	L	L1
1/2"x1/2"	9.5	13.7	25	38	25.3
3/4"x3/4"	15.8	21.4	25	38	25.3
1.0"x1/2"	9.5	13.7	50.5	38	25.3
1.0"x3/4"	15.8	21.4	50.5	38	25.3
1.0"x1.0"	20.6	25.4	50.5	43	30.3
1.5"x1/2"	9.5	13.7	50.5	38	25.3
1.5"x3/4"	15.8	21.4	50.5	38	25.3
1.5"x1.0"	20.6	25.4	50.5	43	25.3
1.5"x1.5"	33.2	38.1	50.5	43	30.3
2.0"x1.5"	33.2	38.1	64	43	30.3
2.0"x2.0"	46	50.8	64	58.7	46
2.5"x2.5"	58.7	63.5	77.5	59.5	46.8
3.0"x3.0"	72	76.2	91	78.6	65.9
4.0"x4.0"	97.6	101.6	119	85.5	72.8



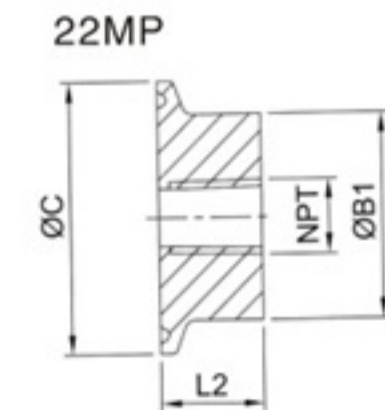
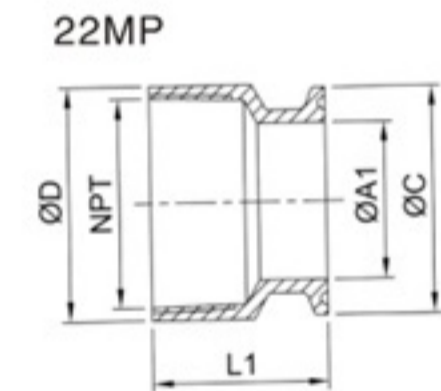
B19W.23BMP

SIZE	ΦA	ΦB	ΦC	L	NPT	NPT-1
1.0"	22.1	25.4	50.5	44.5	1.0"-11.5T	1/2"-14T
1.5"	34.8	38.1	50.5	44.5	1.5"-11.5T	3/4"-14T
2.0"	47.5	50.8	64	46	2.0"-11.5T	3/4"-14T
2.5"	60.2	63.5	77.5	58.7	2.5"-8T	3/4"-14T
3.0"	72.9	76.2	91	63.5	3.0"-8T	3/4"-14T
4.0"	97.4	101.6	119	65.1	4.0"-8T	3/4"-14T
6.0"	146.9	152.4	166.8	76.2	6.0"-8T	3/4"-14T



21MP.22MP

SIZE	ΦA	ΦA1		ΦB	ΦB1	ΦC	ΦD	L	L1	L2	NPT
		1.0"	1.5"								
1/2"x1/2"	9.4	9.4		12.7		25	30	45	33		1/2"-18T
3/4"x1/2"	15.75			19.05		25		45			1/2"-18T
3/4"x3/4"	15.75	15.75		19.05		25	30	45	33		3/4"-18T
1.0"x1.5/4"	3.18			14	38.1	50.5		40		19	1/4"-18T
1.0"x1.5/3/8"	6.35			18	38.1	50.5		40		19	3/8"-18T
1.0"x1.5/2"	9.7			22	38.1	50.5		40		19	1/2"-14T
1.0"x1.5/3/4"	15.75			27	38.1	50.5		45		19	3/4"-14T
1.0"x1.5/1.0"	22.1			34	38.1	50.5		50		19	1.0"-11.5T
1.0"x1.5/1.2"	28.6	22.1	34.8	38.1		50.5	46	50	39		1.2"-11.5T
1.0"x1.5/1.5"	34.8	22.1	34.8	38.1		50.5	52	50	39		1.5"-11.5T
1.0"x1.5/2.0"	47.5	22.1	34.8	38.1		50.5	65	55	39		2.0"-11.5T
2.0"x1/4"	3.18			50.8	50.8	64		40		19	1/4"-18T
2.0"x3/8"	6.35			50.8	50.8	64		40		19	3/8"-18T
2.0"x1/2"	9.4			50.8		64		40			1/2"-14T
2.0"x3/4"	15.75			50.8		64		50		19	3/4"-14T
2.0"x1.0"	22.1			50.8	50.8	64		50		19	1.0"-11.5T
2.0"x1.5"	34.8			50.8	50.8	64	65	50	39		1.5"-11.5T
2.0"x2.0"	47.5	47.5		50.8		64		55			2.0"-11.5T
2.0"x2.5"	60.2			50.8		64		60			2.5"-8T
2.0"x3.0"	72.9			50.8		64		70			3.0"-8T
2.0"x4.0"	97.6			50.8		64		75			4.0"-8T
2.5"x1.0"	22.1			63.5	63.5	77.5		50		35	1.0"-11.5T
2.5"x1.5"	34.8			63.5	63.5	77.5		50		35	1.5"-11.5T
2.5"x2.0"	47.5			63.5	63.5	77.5		55		35	2.0"-11.5T
2.5"x2.5"	60.2	60.2		63.5		77.5	80	60	50		2.5"-8T
2.5"x3.0"	72.9			63.5		77.5		70			3.0"-8T
2.5"x4.0"	97.6			63.5		77.5		75			4.0"-8T
3.0"x1.0"	22.1			76.2	76.2	91		55		35	1.0"-11.5T
3.0"x1.5"	34.8			76.2	76.2	91		55		35	1.5"-11.5T
3.0"x2.0"	47.5			76.2	76.2	91		55		35	2.0"-11.5T
3.0"x2.5"	60.2	72.9		76.2		91	95	60	50		2.5"-8T
3.0"x3.0"	72.9			76.2		91		70			3.0"-8T
3.0"x4.0"	97.6			76.2		91		75			4.0"-8T
4.0"x1.0"	22.1			101.6	101.6	119		55		35	1.0"-11.5T
4.0"x1.5"	34.8			101.6	101.6	119		55		35	1.5"-11.5T
4.0"x2.0"	47.5			101.6	101.6	119		55		35	2.0"-11.5T
4.0"x2.5"	60.2			101.6	101.6	119		60		35	2.5"-8T
4.0"x3.0"	72.9	72.9		101.6	101.6	119	95	70	52	35	3.0"-8T
4.0"x4.0"	97.6			101.6		119		75			4.0"-8T
6.0"x4.0"		97.6		101.6		119	120	75	54		4.0"-8T





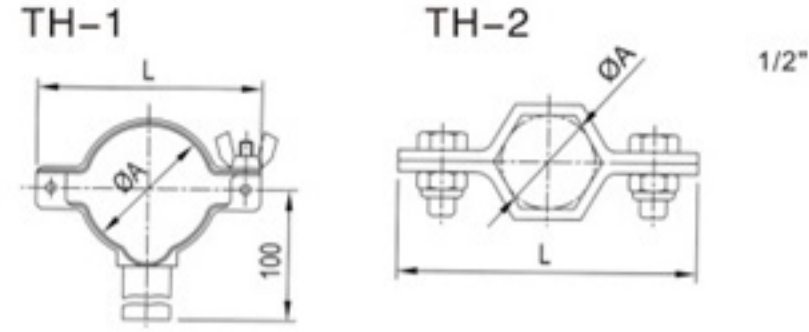
管支架 Tubing Hanger(mm)

● 诚信为本
● Honesty

● 服务至上
● Service-oriented

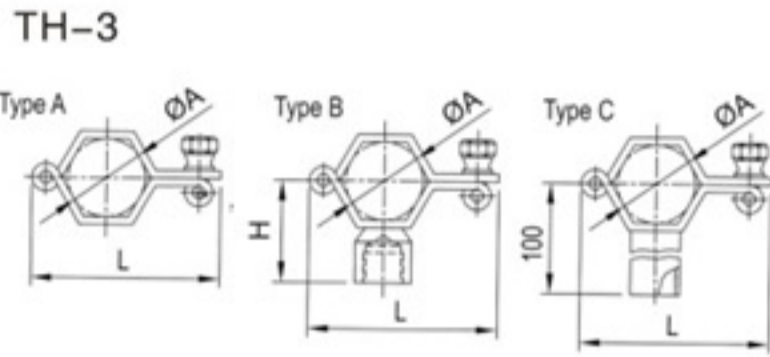


DIN 11851 由任系列 DIN 11851 UNION(mm)



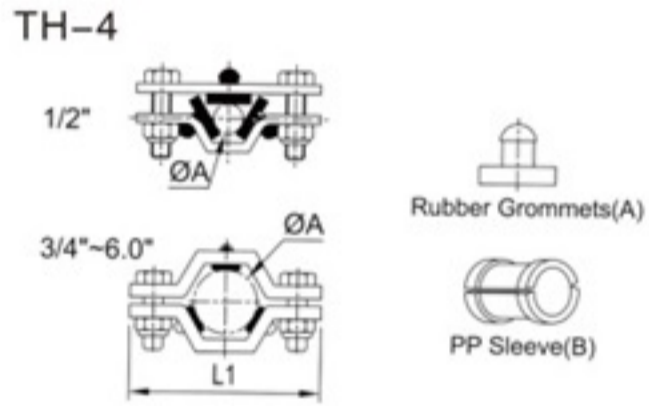
TH-1, TH-4, TH-5 (Type A, Type C), TH6

SIZE	ΦA	ΦA1	ΦC	H	H1	H2	L	L1	L2	L3
1/2"	12.7							79	83	
3/4"	19.05							79	83	
1.0"	25.4	25.5	10	84	90	46.8	66	79	83	55
1.25"		31.75	10	87	90	49.9				60
1.5"	38.1	38.1	10	90	90	53	76	95	97.7	80
2.0"	50.8	50.8	10	96	90	59.4	90	117.9	111.7	90
2.5"	63.5	63.5	10	96	90	66.3	105	120	124	120
3.0"	76.2	76.1	10	92.5	90	72.6	120	135.1	104.5	138
4.0"	101.6/104	101.6	10	102	90	85.3	146	168.4	162	180
5.0"		129	12	114.5		99				207
6.0"	152.4	154	12	127	145	112		225	217	232
8.0"		204	12	152		137				285



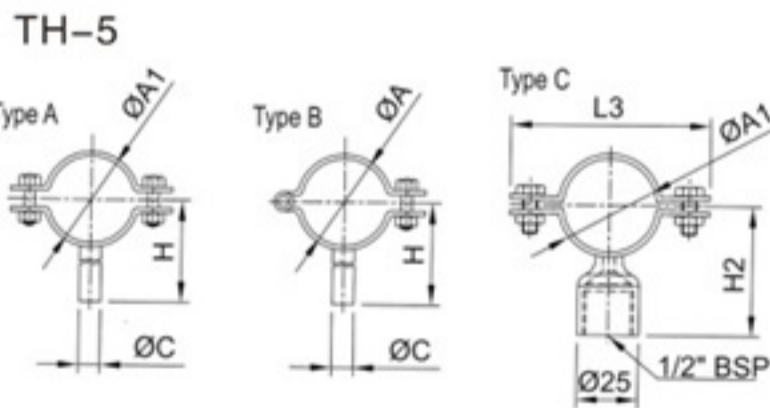
TH-3, TH-5 (Type A, Type B, Type C) (Type A)

SIZE	ΦA	H	L	SIZE	ΦA	ΦA1	ΦC	H	H1	L
				DN10			12/13	6		67.5
				DN15			18/19	8		70.5
				DN20			22/23	8		72.5
SMS25	25	45	61	DN25	28	28/29	8	46.5	75.5	64
				DN32	34	34/35	10	49.5	78.5/79.5	64
SMS38	38	51.5	76	DN40	40	40/41	10	52.5	81.5/82.5	78
SMS51	51	58	90	DN50	52	52/53	12	58.5	88/89	90
SMS63.5	63.5	64	106	DN65	70	70	12	67.5	98	111
SMS76	76.1	70.5	120	DN80	85	85	15	75	105.5	125
SMS104	104	84.5	152	DN100	101.6	104	15	83	116	146
				DN125				129	18	127
				DN150				154	18	140
				DN200				204		
				DN250				254		



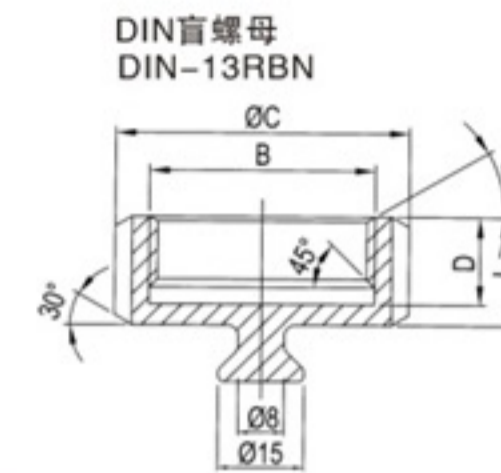
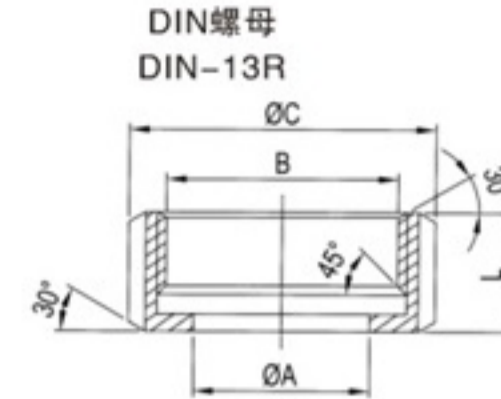
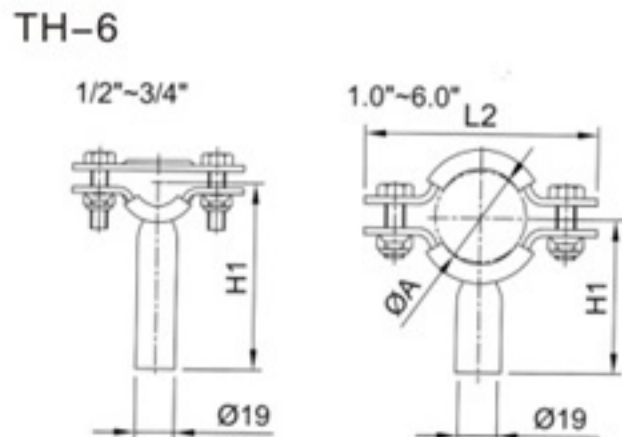
TH-2

SIZE	ΦA	L	SIZE	ΦA	L
ISO-21.3	21.3	68	SMS25	25	74
ISO-26.9	26.9	74	SMS38	38	87
ISO-33.7	33.7	82	SMS51	51	105
ISO-42.4	42.4	93	SMS63	63	117
ISO-48.3	48.3	101	SMS76	76	133
ISO-60.3	60.3	114	SMS104	104	165
ISO-88.9	88.9	149			
ISO-114.3	114.3	177			



TH-5 (Type B)

SIZE	ΦA	ΦC	H
NW20	22	10	61
NW25	28	10	64
NW32	34	10	67
NW40	40	10	70
NW50	52	10	76
NW65	70	10	85
NW80	85	10	92.5
NW100	104	10	102
NW125	129	12	114.5
NW150	154	12	127
NW200	204	12	152



DIN-13 Round Nut

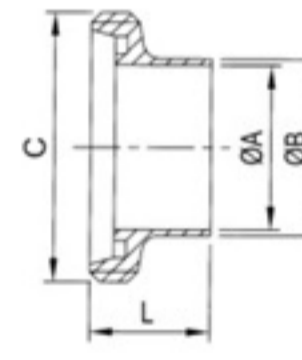
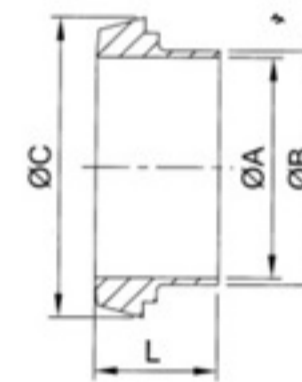
DIN	ΦA	ΦB	ΦC	D	L	Slots
10	19	RD28x1/8	38	15	18	4
15	25	RD34x1/8	44	15	18	4
20	31	RD44x1/6	54	17	21	4
25	36	RD52x1/6	63	18	21	4
32	42	RD58x1/6	70	18	21	4
40	49	RD65x1/6	78	18	21	4
50	62	RD78x1/6	92	19	22	4
65	80	RD95x1/6	112	21	25	6
80	94	RD110x1/4	127	25	30	6
90	104	RD120x1/4	138	26	30	6
100	115	RD130x1/4	148	26	31	6
125	138	RD160x1/4	178	30	35	6
150	164	RD190x1/4	210	34	40	6

DIN平接头
DIN-14DA Welding Liner

DIN	ΦA	ΦB	ΦC	L
10	10	13	22.5	17
15	16	19	28.5	17
20	20	23	36.5	18
25	26	29	44	22
32	32	35	50	25
40	38	41	56	26
50	50	53	68.5	28
60	57	61	76	30
65	66	70	86	32
80	81	85	100	37
100	100	104	121	44
125	125	129	150	34
150	150	154	176	37

DIN-14DB Welding Liner

DIN	ΦA	ΦB	ΦC	L
10	9	12	22.5	17
15	15	18	28.5	17
20	19	22	36.5	18
25	25	28	44	22
32	31	34	50	25
40	37	40	56	26
50	49	52	68.5	28
60	57	61	76	30
65	66	70	86	32
80	81	85	100	37
100	100	104	121	44
125	125	129	150	34
150	150	154	176	37



DIN螺纹接头
DIN-15DA Welding Male

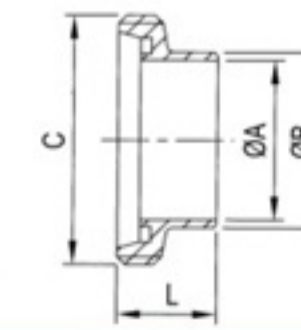
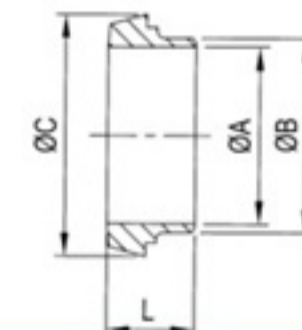
SIZE	ΦA	ΦB	C	L
10	10	13	RD28x1/8	21
15	16	19	RD34x1/8	21
20	20	23	RD44x1/6	24
25	26	29	RD52x1/6	29
32	32	35	RD58x1/6	32
40	38	41	RD65x1/6	33
50	50	53	RD78x1/6	35
60	57	61	RD85x1/6	36
65	66	70	RD95x1/6	40
80	81	85	RD110x1/4	45
90	89	93	RD120x1/4	54
100	100	104	RD130x1/4	54
125	125	129	RD160x1/4	46
150	150	154	RD190x1/4	50

DIN-15DB Welding Male

SIZE	ΦA	ΦB	C	L
10	9	12	RD28x1/8	21
15	15	18	RD34x1/8	21
20	19	22	RD44x1/6	24
25	25	28	RD52x1/6	29
32	31	34	RD58x1/6	32
40	37	40	RD65x1/6	33
50	49	52	RD78x1/6	35
60	57	61	RD85x1/6	36
65	66	70	RD95x1/6	40
80	81	85	RD110x1/4	45
90	89	93	RD120x1/4	54
100	100	104	RD130x1/4	54
125	125	129	RD160x1/4	46
150	150	154	RD190x1/4	50

平接头
DIN-14 Welding Liner

SIZE	ΦA	ΦB	ΦC	L
10	10	15	22	17
15	16	21	28	17
20	20	25	36	18
25	26	31	44	22
32	32	37	50	25
40	38	43	56	26
50	50	55	68	28
60	57	63	76	30
65	66	72	86	32
80	81	87	100	37
101.6	99	104	121	44
104	100	106	121	44
125	125	132	150	34
150	150	157	176	37



由任储片
DIN-14B Blanks

SIZE	ΦA	ΦB	L
10	18	22	9
15	24	28	9
20	30	36	11
25	35	44	13
32	41	50	13
40	48	56	13
50	61	68	14
65	79	86	16
80	93	100	16
100	114	121	20
125	137	150	22
150	163	176	24

密封圈
DIN Seal Ring
(EPDM, Silicon, Viton)

SIZE	ΦA	ΦB	L
10	12	20	4.5
15	18	26	4.5
20	23	33	4.5
25	30	40	5
32	36	46	5
40	42	52	5
50	54	64	5
65	71	81	5
80	85	95	5
100	104	114	5
125	130	142	7
150	155	167	7

螺纹接头
DIN-15 Welding Male

SIZE	ΦA	ΦB	C	L
10	10	15	RD28x1/8	21
15	16	21	RD34x1/8	21
20	20	25	RD44x1/6	24
25	26	31	RD52x1/6	29
32	32	37	RD58x1/6	32
40	38	43	RD65x1/6	33
50	50	55	RD78x1/6	35
60	57	63	RD85x1/6	36
65	66	72	RD95x1/6	40
80	81	87	RD110x1/4	45
101.6	99	104	RD130x1/4	54
104	100	106	RD130x1/4	54
125	125	132	RD160x1/4	46
150	150	157	RD190x1/4	50



DIN 11851 扩展式由任

DIN 11851 Expanding / Imperial Unions (mm)

- 诚信为本
- Honesty

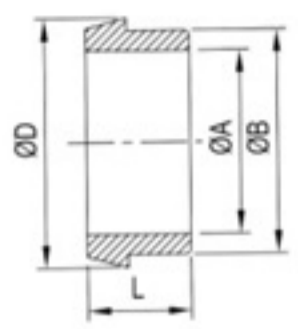
- 服务至上
- Service-oriented



DIN 11853-1 由任

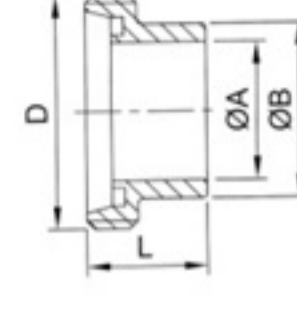
DIN 11853-1 UNION (mm)

DIN平接头(厚壁)
DIN Welding Liner DIN14-T



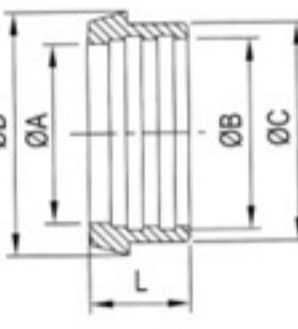
SIZE	ΦA	ΦB	ΦD	L
DN10	10	18	22	17
DN15	16	24	28	17
DN20	20	30	36	18
DN25	26	35	44	22
DN32	32	41	50	25
DN40	38	48	56	26
DN50	50	61	68	28
DN65	66	79	86	32
DN80	81	93	100	37
101.6	99	112	121	44
DN104	100	114	121	44

DIN云头(厚壁)
DIN Welding Male DIN15-T



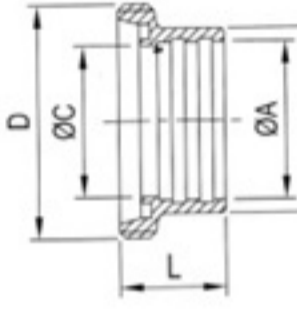
SIZE	ΦA	ΦB	D	L
DN10	10	18	RD28x18	21
DN15	16	24	RD34x18	21
DN20	20	30	RD44x16	24
DN25	26	35	RD52x16	29
DN32	32	41	RD58x16	32
DN40	38	48	RD65x16	33
DN50	50	61	RD78x16	35
DN65	66	79	RD95x16	40
DN80	81	93	RD110x14	45
101.6	99	112	RD130x14	54
DN104	100	114	RD130x14	54

扩展式平接头
DIN Expanding Liner DIN-14R



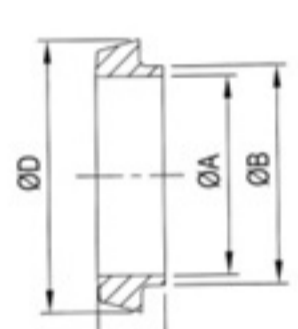
SIZE	ΦA	ΦB	ΦC	ΦD	L
DN10	10	12.2	18	22	17
DN15	16	18.2	24	28	17
DN20	20	22.2	30	36	18
DN25	26	28.2	35	44	22
DN32	32	34.2	41	50	25
DN40	38	40.2	48	56	26
DN50	50	52.2	61	68	28
DN65	66	70.3	79	86	32
DN80	81	85.3	93	100	37
DN100	100	104.3	114	121	44
DN125	125	129.3	137	150	34
DN150	150	154.3	163	176	37

扩展式云头
DIN Expanding Male DIN-15R



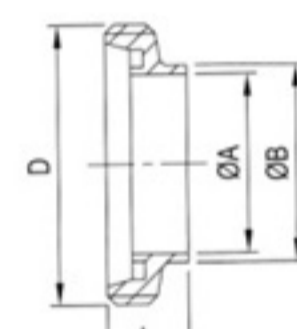
SIZE	ΦA	ΦB	ΦC	D	L
DN10	12.2	18	10	RD28x18	21
DN15	18.2	24	16	RD34x18	21
DN20	22.2	30	20	RD44x16	24
DN25	28.2	35	26	RD52x16	29
DN32	34.2	41	32	RD58x16	32
DN40	40.2	48	38	RD65x16	33
DN50	52.2	61	50	RD78x16	35
DN65	70.3	79	66	RD95x16	40
DN80	85.3	93	81	RD110x14	45
DN100	104.3	114	100	RD130x14	54
DN125	129.3	137	125	RD160x14	46
DN150	154.3	163	150	RD190x14	50

短型平接头
DIN Short Welding Liner DIN-14E



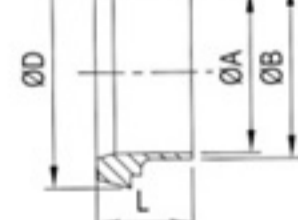
SIZE	ΦA	ΦB	ΦD	L
DN10	9	12	22.5	13
DN15	15	18	28.5	13
DN20	19	22	36.5	13
DN25	25	28	44	15
DN32	31	34	50	15
DN40	37	40	56	15
DN50	49	52	68.5	16
DN65	66	70	86	17
DN80	81	85	100	17
DN100	100	104	121	20
DN125	125	129	150	23.5
DN150	150	154	176	27

短型云头
DIN Short Welding Male DIN-15E



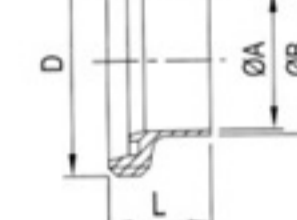
SIZE	ΦA	ΦB	D	L
DN10	9	12	RD28x18	17
DN15	15	18	RD34x18	17
DN20	19	22	RD44x16	19
DN25	25	28	RD52x16	22
DN32	31	34	RD58x16	22
DN40	37	40	RD65x16	22
DN50	49	52	RD78x16	23
DN65	66	70	RD95x16	25
DN80	81	85	RD110x14	25
DN100	100	104	RD130x14	30
DN125	125	129	RD160x14	35.5
DN150	150	154	RD190x14	40

英制平接头
DIN Imperial Welding Liner DIN-14I



SIZE	ΦA	ΦB	ΦD	L
1.0"	22.1	25.4	44	22
1.5"	34.8	38.1	56	26
2.0"	47.5	50.8	68	28
2.5"	60.2	63.5	86	32
3.0"	72.9	76.2	100	37
4.0"	97.6	101.6	121	44

英制云头
DIN Imperial Welding Male DIN-15I



SIZE	ΦA	ΦB	D	L
1.0"	22.1	25.4	RD52x16	29
1.5"	34.8	38.1	RD65x16	33
2.0"	47.5	50.8	RD78x16	35
2.5"	60.2	63.5	RD95x16	40
3.0"	72.9	76.2	RD110x14	45
4.0"	97.6	101.6	RD130x14	54

平接头软管接头
DIN-14AHR Hose Adapter



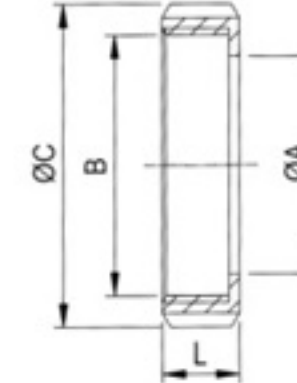
SIZE	ΦA	ΦB	ΦD	L
DN25	22.2	25	44	67
DN32	28.7	32.2	50	71
DN40	34	38	56	78
DN50	47	50.5	68	89
DN65	59	63.2	86	100
DN80	71.5	75.5	100	108
DN100	95	100.8	121	120

云头式软管接头
DIN-15AHR Hose Adapter



SIZE	ΦA	ΦB	D	L
DN25	22.2	25	RD52x16	69
DN32	28.7	32.2	RD65x16	73
DN40	34	38	RD78x16	80
DN50	47	50.5	RD95x16	90
DN65	59	63.2	RD110x14	108
DN80	71.5	75.5	RD130x14	116
DN100	95	100.8	RD130x14	128

DIN圆螺母
DIN-Round Din-13R



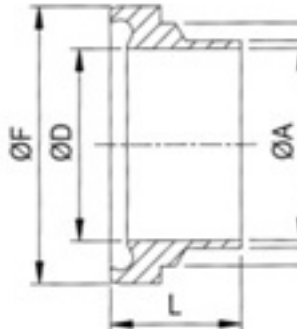
DIN	ΦA	B	ΦC	L	Slots
10	19	RD28x18	38	18	4
15	25	RD34x18	44	18	4
20	31	RD44x16	54	20	4
25	36	RD52x16	63	21	4
32	42	RD58x16	70	21	4
40	49	RD65x16	78	21	4
50	62	RD78x16	92	22	4
65	80	RD95x16	112	25	6
80	94	RD110x14	127	29	6
90	104	RD120x14	138	30	6
100	114	RD130x14	148	31	6
125	137	RD160x14	178	35	6
150	163	RD190x14	210	40	6

密封圈
DIN Seal ISO Seal Imperial Seal



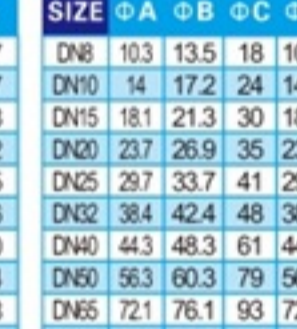
DIN	ΦA	L	DIN	ΦA	L	Imperial	ΦA	L
DN10	12	3.5	DN8	12	3.5	1/2"	12	3.5
DN15	18	3.5	DN10	16	3.5	3/4"	18	3.5
DN20	22	3.5	DN15	20	3.5	1.0"	24	3.5
DN25	28	3.5	DN20	26	3.5	1.5"	37	5
DN32	34	5	DN25	32	5	2.0"	50	5
DN40	40	5	DN32	40.5	5	2.5"	62	5
DN50	52	5	DN40	46.5	5	3.0"	75	5
DN65	68	5	DN50	58.5	5	4.0"	100	5
DN80	83	5	DN65	73.5	5			
DN100	102	5	DN80	86.5	5			

DIN平接头
DIN-14 Liner



SIZE	ΦA	ΦB	ΦC	ΦD	ΦF	L
DN10	10	13	18	10.1	21.9	17
DN15	16	19	24	16.1	27.9	17
DN20	20	23	30	20.1	35.9	18
DN25	26	29	35	26.1	42.9	22
DN32	32	35	41	32.1	48.9	25
DN40	38	41	48	38.1	54.9	26
DN50	50	53	61	50.1	66.9	30
DN65	66	70	79	66.1	84.9	34
DN80	81	85	93	81.1	98.9	38
DN100	100	104	114	100.1	118.9	46

ISO平接头
ISO-14 Liner



SIZE	ΦA	ΦB	ΦC	ΦD	ΦF	L
DN8	10.3	13.5	18	10.4	21.9	17
DN10	14	17.2	24	14.1	27.9	17
DN15	18.1	21.3	30	18.2	35.9	18
DN20	23.7	26.9	35	23.8	42.9	22
DN25	29.7	33.7	41	29.8	48.9	25
DN32	38.4	42.4	48	38.5	54.9	26
DN40	44.3	48.3	61	44.4	66.9	30
DN50	56.3	60.3	79	56.4	84.9	34
DN65	72.1	76.1	93	72.2	98.9	38
DN80	84.3	88.9	114	84.4	118.9	46

Imperial平接头
Imperial-14 Liner



SIZE	ΦA	ΦB	ΦC	ΦD	ΦF	L
1/2"	9.4	12.7	18	9.45	21.9	17
3/4"	15.75	19.05	24	15.8	27.9	17
1.0"	22.1	25.4	35	22.15	42.9	22
1.5"	34.8	38.1	48	34.85	54.9	26
2.0"	47.5	50.8	61	47.55	66.9	30
2.5"	60.2	63.5	79	60.25	84.9	34
3.0"	72.9	76.2	93	72.95	98.9	38
4.0"	97.38	101.6	114	97.43	118.9	46

DIN云头/螺纹接头
DIN-15 Male



SIZE	ΦA	ΦB	ΦD	ΦE	F	L
DN10	10	13	10.1	22	RD28x18	19
DN15	16	19	16.1	28	RD34x18	19
DN20	20	23	20.1	36	RD44x16	21
DN25	26	29	26.1	43	RD52x16	26
DN32	32	35	32.1	49	RD58x16	30
DN40	38	41	38.1	55	RD65x16	31
DN50	50	53	50.1	67	RD78x16	31
DN65	66	70	66.1	85	RD95x16	36
DN80	81	85	81.1	99	RD110x14	42
DN100	100	104	100.1	119	RD130x14	50

ISO云头/螺纹接头
ISO-15 Male



SIZE	ΦA	ΦB	ΦD	ΦE	F	L
DN8	10.3	13.5	10.4	22	RD28x18	19
DN10	14	17.2	14.1	28	RD34x18	19
DN15	18.1	21.3	18.2	36	RD44x16	21
DN20	23.7	26.9	23.8	43	RD52x16	26
DN25	29.7	33.7	29.8	49	RD58x16	30
DN32	38.4	42.4	38.5	55	RD65x16	31
DN40	44.3	48.3	44.4	67	RD78x16	31
DN50	56.3	60.3	56.4	85	RD95x16	36
DN65	72.1	76.1	72.2	99	RD110x14	42
DN80	84.3	88.9	84.4	119	RD130x14	50

Imperial云头/螺纹接头
Imperial-15 Male



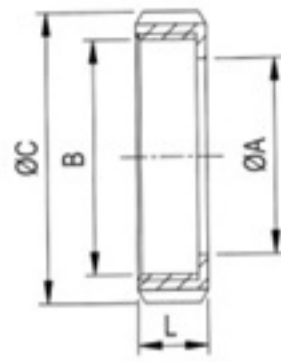
DIN 11864-1 由任系列A
DIN 11864-1 Unions From A

- 诚信为本
- Honesty

- 服务至上
- Service-oriented



SMS 由任系列
SMS Long Weld / short Unions(mm)



DIN螺母
Din Round Nut Din-13R

DIN	ΦA	B	ΦC	L	Slots
10	19	RD 28X18	38	18	4
15	25	RD 34X18	44	18	4
20	31	RD 44X16	54	20	4
25	36	RD 52X16	63	21	4
32	42	RD 58X16	70	21	4
40	49	RD 65X16	78	21	4
50	62	RD 78X16	92	22	4
65	80	RD 95X16	112	25	6
80	94	RD 110X14	127	29	6
90	104	RD 120X14	138	30	6
100	114	RD 130X14	148	31	6
125	137	RD 160X14	178	35	6
150	163	RD 190X14	210	40	6



DIN Seal

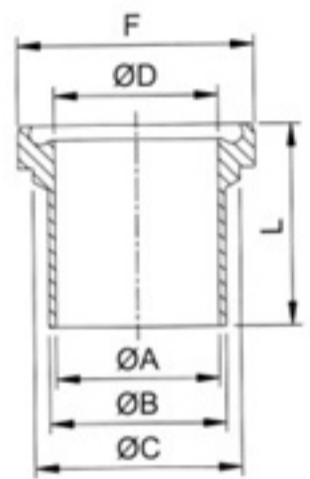
DIN	ΦA	L
DN10	12	3.5
DN15	18	3.5
DN20	22	3.5
DN25	28	3.5
DN32	34	5
DN40	40	5
DN50	52	5
DN65	68	5
DN80	83	5
DN100	102	5

ISO Seal

DIN	ΦA	L
DN8	12	3.5
DN10	16	3.5
DN15	20	3.5
DN20	26	3.5
DN25	32	5
DN32	40.5	5
DN40	46.5	5
DN50	58.5	5
DN65	73.5	5
DN80	86.5	5

Imperial Seal

DIN	ΦA	L
1/2"	12	3.5
3/4"	18	3.5
1.0"	24	3.5
1.5"	37	5
2.0"	50	5
2.5"	62	5
3.0"	75	5
4.0"	100	5



DIN平接头
DIN-14 LINER From A

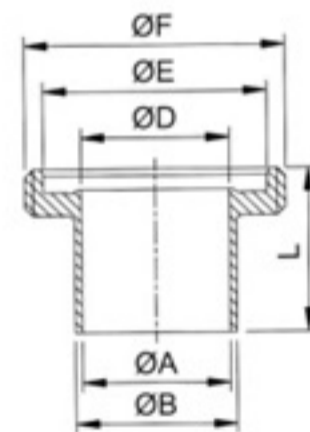
SIZE	ΦA	ΦB	ΦC	ΦD	ΦF	L
DN10	10	13	18	10.1	21.9	39
DN15	16	19	24	16.1	27.9	39
DN20	20	23	30	20.1	35.9	38
DN25	26	29	35	26.1	42.9	40
DN32	32	35	41	32.1	48.9	47
DN40	38	41	48	38.1	54.9	47
DN50	50	53	61	50.1	66.9	48
DN65	66	70	79	66.1	84.9	61
DN80	81	85	93	81.1	98.9	61
DN100	100	104	114	100.1	118.9	66

ISO平接头
ISO-14 LINER From A

SIZE	ΦA	ΦB	ΦC	ΦD	ΦF	L
DN8	10.35	13.5	18	10.4	21.9	39
DN10	14	17.2	24	14.1	27.9	39
DN15	18.1	21.3	30	18.2	35.9	40
DN20	23.7	26.9	35	23.8	42.9	41
DN25	29.7	33.7	41	29.8	48.9	47
DN32	38.4	42.4	48	38.5	54.9	47
DN40	44.35	48.3	61	44.4	66.9	48
DN50	56.35	60.3	79	56.4	84.9	62
DN65	72.15	76.1	93	72.2	98.9	61
DN80	84.35	88.9	114	84.4	118.9	68

Imperial平接头
Imperial-14 LINER From A

SIZE	ΦA	ΦB	ΦC	ΦD	ΦF	L
1/2"	9.4	12.7	18	9.45	21.9	39
3/4"	15.75	19.05	24	15.8	27.9	39
1.0"	22.1	25.4	35	22.15	42.9	40
1.5"	34.8	38.1	48	34.85	54.9	46.5
2.0"	47.5	50.8	61	47.55	66.9	47.5
2.5"	60.2	63.5	79	60.25	84.9	63
3.0"	72.9	76.2	93	72.95	98.9	61
4.0"	97.38	101.6	114	97.43	118.9	65



DIN云头
DIN-15 Male From A

SIZE	ΦA	ΦB	ΦD	ΦE	ΦF	L
DN10	10	13	10.1	22	RD 28X18	41
DN15	16	19	16.1	28	RD 34X18	41
DN20	20	23	20.1	36	RD 44X16	43
DN25	26	29	26.1	43	RD 52X16	43
DN32	32	35	32.1	49	RD 58X16	48
DN40	38	41	38.1	55	RD 65X16	48
DN50	50	53	50.1	67	RD 78X16	48
DN65	66	70	66.1	85	RD 95X16	60
DN80	81	85	81.1	99	RD 110X14	64
DN100	100	104	100.1	119	RD 130X14	64

ISO云头
ISO-15 Male From A

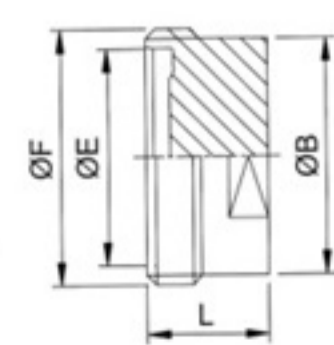
SIZE	ΦA	ΦB	ΦD	ΦE	ΦF	L
DN8	10.35	13.5	10.4	22	RD 28X18	41
DN10	14	17.2	14.1	28	RD 34X18	41
DN15	18.1	21.3	18.2	36	RD 44X16	43
DN20	23.7	26.9	23.8	43	RD 52X16	43
DN25	29.7	33.7	29.8	49	RD 58X16	48
DN32	38.4	42.4	38.5	55	RD 65X16	48
DN40	44.35	48.3	44.4	67	RD 78X16	49
DN50	56.35	60.3	56.4	85	RD 95X16	60
DN65	72.15	76.1	72.2	99	RD 110X14	64
DN80	84.35	88.9	84.4	119	RD 130X14	64

Imperial云头
Imperial-15 Male From A

SIZE	ΦA	ΦB	ΦD	ΦE	ΦF	L
1/2"	9.4	12.7	9.45	22	RD 28X18	41
3/4"	15.75	19.05	15.8	28	RD 34X18	41
1.0"	22.1	25.4	22.15	43	RD 52X16	43
1.5"	34.8	38.1	34.85	55	RD 65X16	48.5
2.0"	47.5	50.8	47.55	67	RD 78X16	48.5
2.5"	60.2	63.5	60.25	85	RD 95X16	60
3.0"	72.9	76.2	72.95	99	RD 110X14	64
4.0"	97.38	101.6	97.43	119	RD 130X14	64

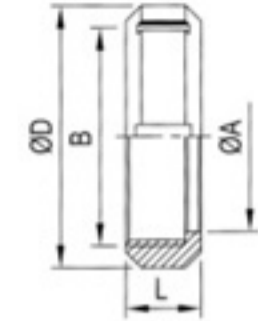
平接头由任堵片
DIN/ISO/Imperial-14 LINER Blank Cap

SIZE	ΦC	ΦF	L	
DN10	1/2"	18	21.9	9
DN15	3/4"	24	27.9	9
DN20	—	30	35.9	10
DN25	1.0"	35	42.9	12
DN32	—	41	48.9	13
DN40	1.5"	48	54.9	13
DN50	2.0"	61	66.9	14
DN65	2.5"	79	84.9	16
DN80	3.0"	93	98.9	16
DN100	4.0"	114	118.9	20



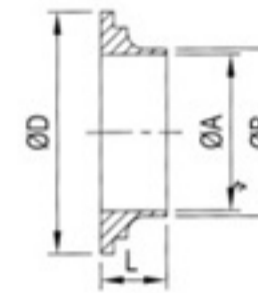
云头由任堵片
DIN/ISO/Imperial-15MALE Blank Cap

SIZE	ΦB	ΦE	F	L	
DN10	1/2"	23	22	RD 28X18	24
DN15	3/4"	28	28	RD 34X18	24
DN20	—	34	36	RD 44X16	24
DN25	1.0"	44	43	RD 52X16	24
DN32	—	53	49	RD 58X16	24
DN40	1.5"	60	55	RD 65X16	24
DN50	2.0"	72	67	RD 78X16	24
DN65	2.5"	87	85	RD 95X16	28
DN80	3.0"	100	99	RD 110X14	28
DN100	4.0"	120	119	RD 130X14	30



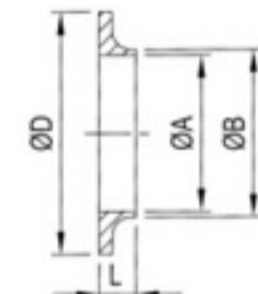
SMS-13R 6槽圆螺母
SMS Nut 6 Slots SMS-13R

SIZE	ΦA	B	ΦD	L
DN25	32	RD 40X16	51	19
DN32	40	RD 48X16	60	22
DN38	48	RD 60X16	74	23
DN51	60.5	RD 70X16	84	24
DN63.5	74	RD 85X16	100	28
DN76	87	RD 98X16	114	30
DN101.6	113	RD 125X14	138	31
DN104	113	RD 125X14	138	31
DN104-B	117	RD 132X16	150	31



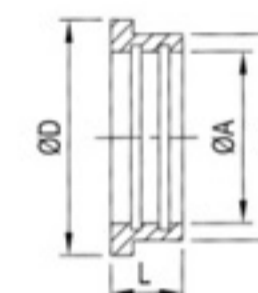
加长平接头
Long Welding Liner SMS-14GL

SIZE	ΦA	ΦB	ΦD	L
DN25	22.5	25	35.5	15.5
DN38	35.5	38	55	16
DN51	48.5	51	65	17
DN63.5	60.5	63.5	80	17
DN76	72.9	76.1	93	19
DN101.6	97.6	101.6	118	19
DN104	100	104	118	19
DN104-B	98.5	102.5	127	19



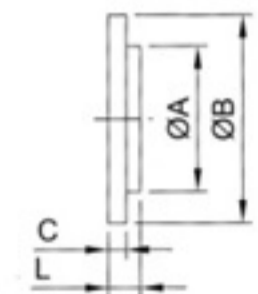
短型平接头
Short Welding Liner SMS-14S

SIZE	ΦA	ΦB	ΦD	L
DN25	22.5	25	35.5	11
DN38	35.5	38	55	16
DN51	48.5	51	65	17
DN63.5	60.5	63.5	80	17
DN76	72	76	93	19
DN101.6	97.6	101.6	118	19
DN104	100	104	118	19
DN104-B	98.5	102.5	127	19



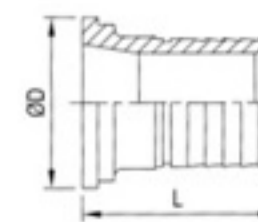
扩展式平接头
SMS Expanding Male 14R

SIZE	ΦA	ΦB	ΦD	L
DN25	25.2	32	35.5	17
DN32	32.2	40	43.5	17
DN38	38.2	48	55	20
DN40	40.2	48	55	20
DN51	51.2	60	65	20
DN63.5	63.7	73.5	80	25
DN76	76.2	86	93	30
DN101.6	101.8	112.5	118	27
DN104	104.2	112.5	118	27



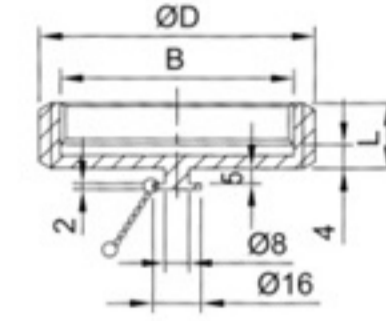
由任堵片
SMS-14B Blanks

SIZE	ΦA	ΦB	C	L
DN25	32	35.5	3.5	7.5
DN38	48	55	5	9
DN51	60	65	5	10
DN63.5	73.5	80	5	10
DN76	86	93	5	11
DN104	112	118	6	11
DN104B	116	128	6	11



SMS平接头 软管接头
SMS-14AHR Hose Adapter

SIZE	ΦA	ΦB	ΦD	L
DN25	22.2	25	35.5	60.5
DN38	34	38	55	72
DN51	47	50.5	65	82
DN63.5	59	63.2	80	95
DN76	71.5	75.5	93	97
DN104	95	100.8	118	109



SMS 13RBN 6槽盲螺母
SMS Blank Nut 13RBN

SIZE	B	ΦD	L
DN25	RD 40X16	51	19
DN32	RD 48X16	60	22
DN38	RD 60X16	74	23
DN51	RD 70X16	84	24
DN63.5	RD 85X16	100	28
DN76	RD 98X16	114	30
DN104	RD 125X14	138	31



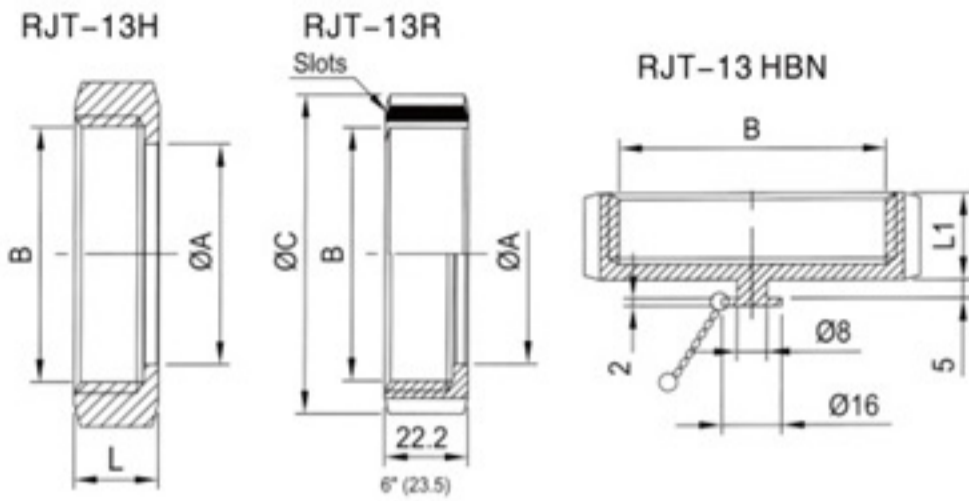
RJT/BS 由任系列
RJT(BS) Unions(mm)

- 诚信为本
- Honesty

- 服务至上
- Service-oriented

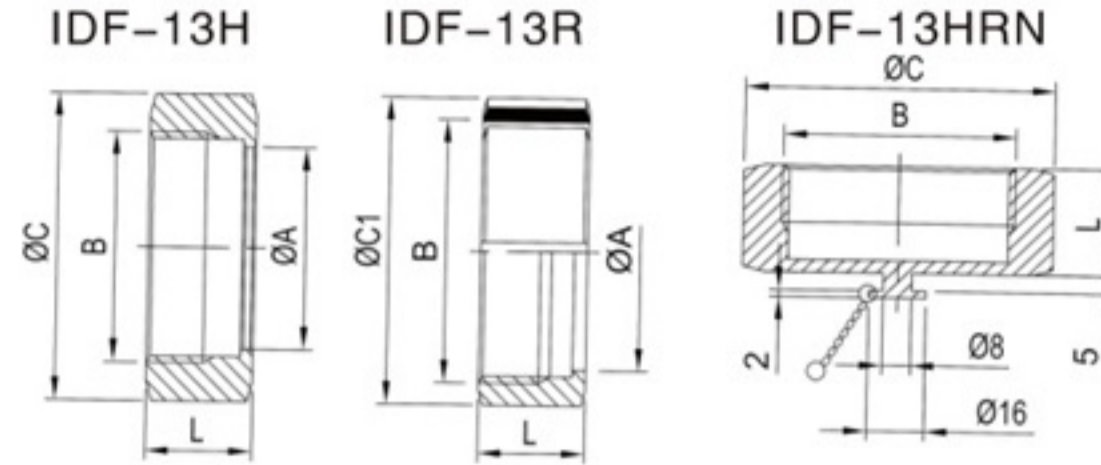


IDF/JIS 由任系列
IDF/JIS G3447 Unions(mm)



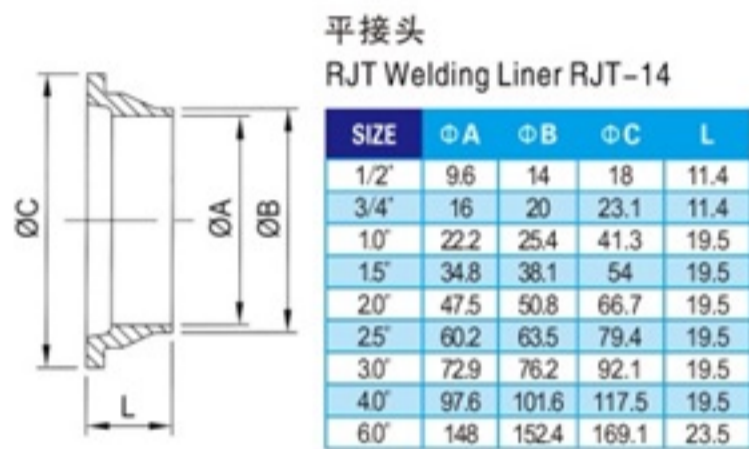
螺母
RJT-13 NUT

SIZE	ØA	B	ØC	L	L1	Slots
1/2"	14.5	19.8x10 TPI WHIT		16		
3/4"	21	26.2x10 TPI WHIT		16		
1.0"	33.45	42.66x8 TPI WHIT	58.5	22.2	23.5	4
1.5"	46	54.96x8 TPI WHIT	74	22.2	23.5	4
2.0"	58.67	67.92x6 TPI WHIT	85.5	22.2	23.5	6
2.5"	71.4	80.62x6 TPI WHIT	98.5	22.2	23.5	6
3.0"	84.1	93.32x6 TPI WHIT	111.6	22.2	23.5	8
4.0"	109.7	118.72x6 TPI WHIT	138	22.2	23.5	8
6.0"	163	189.52x6 TPI WHIT	197	24		10



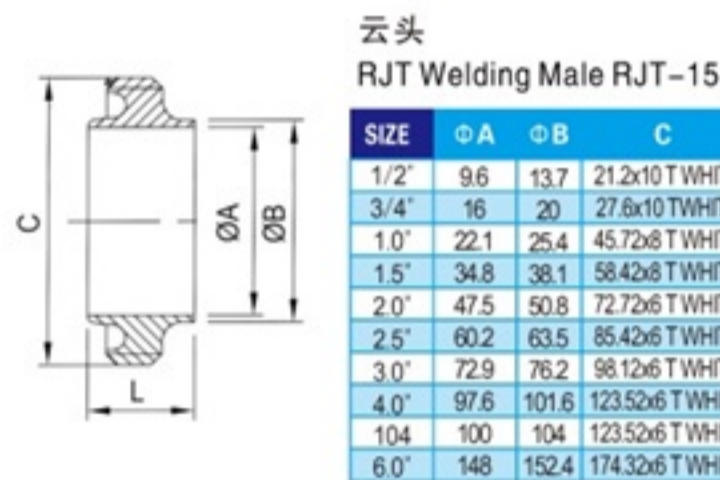
螺母
IDF-13 NUT

SIZE	ØA	B	ØC	ØC1	L
1.0"	30.5	34.34x8T ACME	46	48	30
1.5"	43.5	47.86x8T ACME	60	64	30
2.0"	57	61.37x8T ACME	75	77	30
2.5"	70.7	74.88x8T ACME	90	91	30
3.0"	83.3	88.4x8T ACME	106	106	30
3.0"	83.3	88.4x8T ACME	105	105	30
4.0"	112	115.41x8T ACME	135	135	34.9
4.0"	112	122.05x6T ACME	133	133	34.9



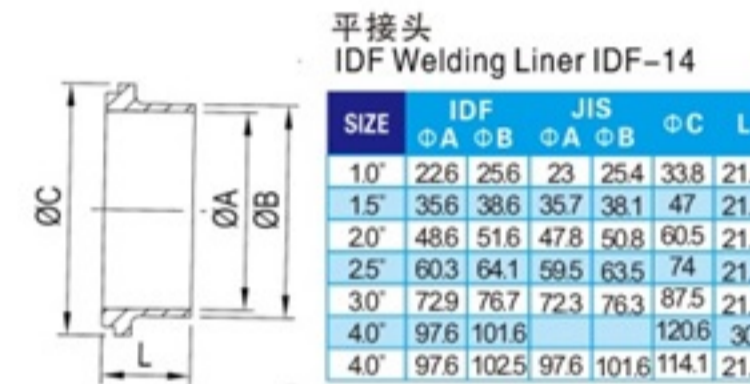
平接头
RJT Welding Liner RJT-14

SIZE	ØA	ØB	ØC	L
1/2"	9.6	14	18	11.4
3/4"	16	20	23.1	11.4
1.0"	22.2	25.4	41.3	19.5
1.5"	34.8	38.1	54	19.5
2.0"	47.5	50.8	66.7	19.5
2.5"	60.2	63.5	79.4	19.5
3.0"	72.9	76.2	92.1	19.5
4.0"	97.6	101.6	117.5	19.5
6.0"	148	152.4	169.1	23.5



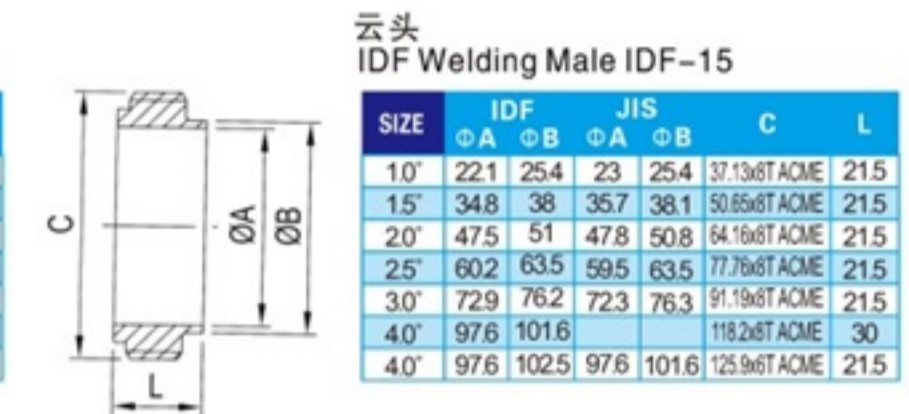
云头
RJT Welding Male RJT-15

SIZE	ØA	ØB	C	L
1/2"	9.6	13.7	21.2x10T WHIT	16.5
3/4"	16	20	27.6x10T WHIT	16.5
1.0"	22.1	25.4	45.72x8T WHIT	27
1.5"	34.8	38.1	58.42x8T WHIT	27
2.0"	47.5	50.8	72.72x6T WHIT	27
2.5"	60.2	63.5	85.42x6T WHIT	27
3.0"	72.9	76.2	98.12x6T WHIT	27
4.0"	97.6	101.6	123.52x6T WHIT	27
104	100	104	123.52x6T WHIT	27
6.0"	148	152.4	174.32x6T WHIT	24



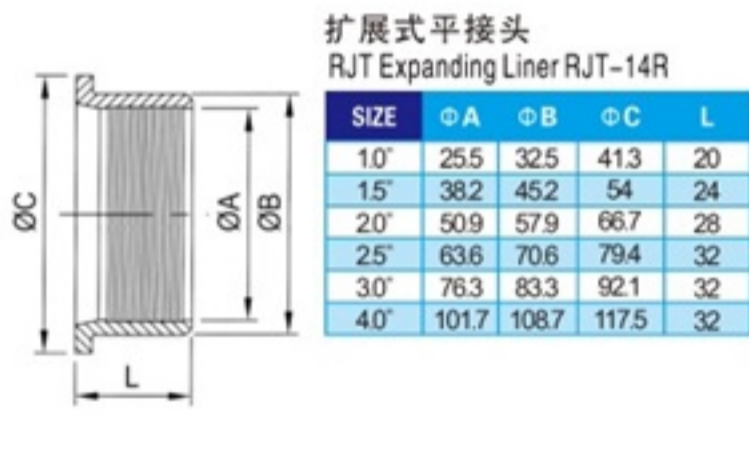
平接头
IDF Welding Liner IDF-14

SIZE	IDF		JIS		ØC	L
	ØA	ØB	ØA	ØB		
1.0"	22.6	25.6	23	25.4	33.8	21.5
1.5"	35.6	38.6	35.7	38.1	47	21.5
2.0"	48.6	51.6	47.8	50.8	60.5	21.5
2.5"	60.3	64.1	59.5	63.5	74	21.5
3.0"	72.9	76.7	72.3	76.3	87.5	21.5
4.0"	97.6	101.6			120.6	30
4.0"	97.6	102.5	97.6	101.6	114.1	21.5



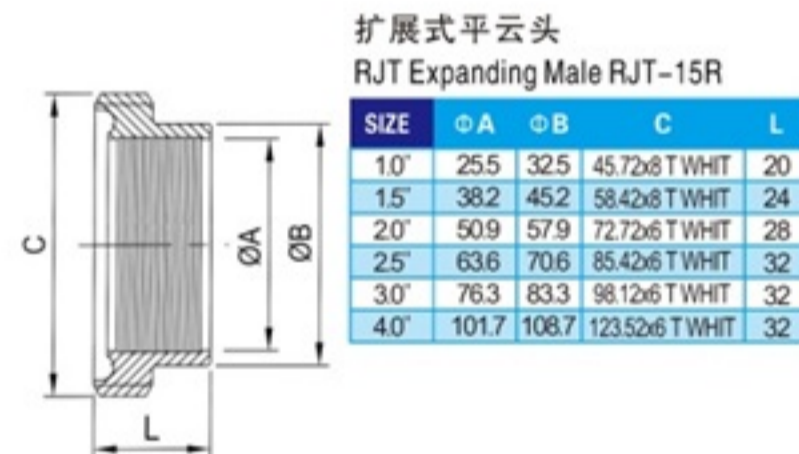
云头
IDF Welding Male IDF-15

SIZE	IDF		JIS		C	L
	ØA	ØB	ØA	ØB		
1.0"	22.1	25.4	23	25.4	37.13x8T ACME	21.5
1.5"	34.8	38	35.7	38.1	50.85x8T ACME	21.5
2.0"	47.5	51	47.8	50.8	64.16x8T ACME	21.5
2.5"	60.2	63.5	59.5	63.5	77.76x8T ACME	21.5
3.0"	72.9	76.2	72.3	76.3	91.19x8T ACME	21.5
4.0"	97.6	101.6			118.2x8T ACME	30
4.0"	97.6	102.5	97.6	101.6	125.9x6T ACME	21.5



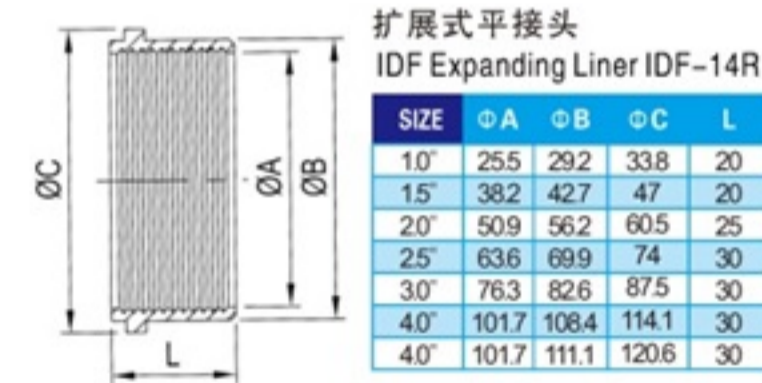
扩展式平接头
RJT Expanding Liner RJT-14R

SIZE	ØA	ØB	ØC	L
1.0"	25.5	32.5	41.3	20
1.5"	38.2	45.2	54	24
2.0"	50.9	57.9	66.7	28
2.5"	63.6	70.6	79.4	32
3.0"	76.3	83.3	92.1	32
4.0"	101.7	108.7	117.5	32



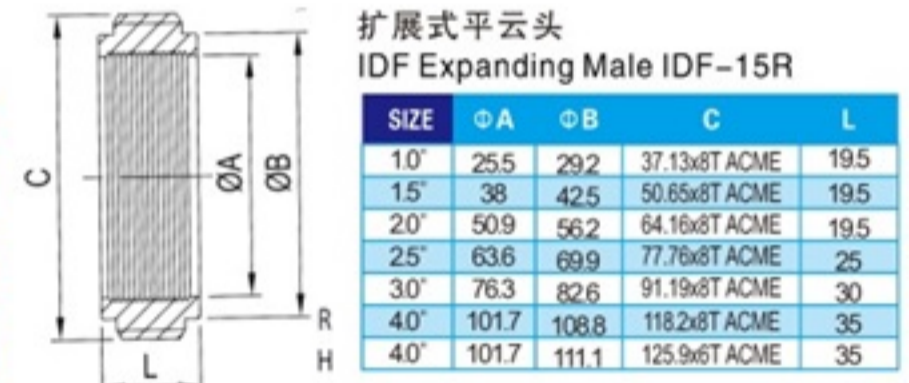
扩展式平云头
RJT Expanding Male RJT-15R

SIZE	ØA	ØB	C	L
1.0"	25.5	32.5	45.72x8T WHIT	20
1.5"	38.2	45.2	58.42x8T WHIT	24
2.0"	50.9	57.9	72.72x6T WHIT	28
2.5"	63.6	70.6	85.42x6T WHIT	32
3.0"	76.3	83.3	98.12x6T WHIT	32
4.0"	101.7	108.7	123.52x6T WHIT	32



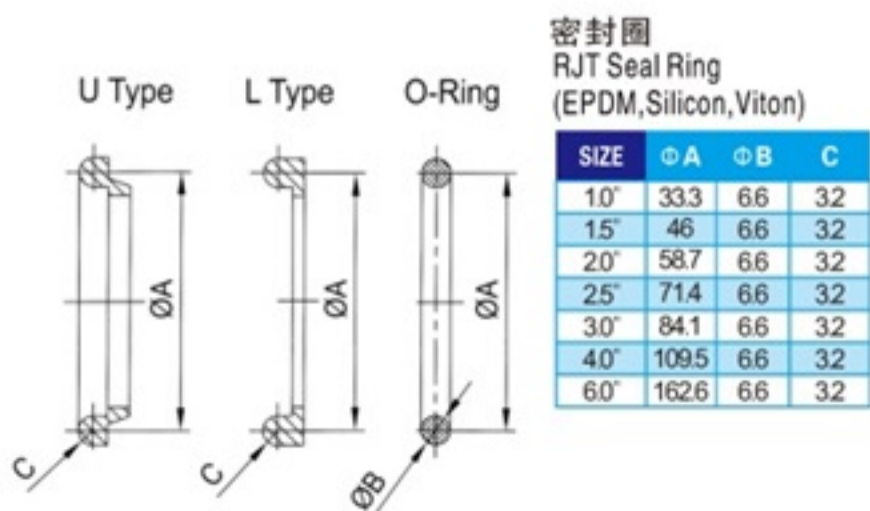
扩展式平接头
IDF Expanding Liner IDF-14R

SIZE	ØA	ØB	ØC	L
1.0"	25.5	29.2	33.8	20
1.5"	38.2	42.7	47	20
2.0"	50.9	56.2	60.5	25
2.5"	63.6	69.9	74	30
3.0"	76.3	82.6	87.5	30
4.0"	101.7	108.4	114.1	30
4.0"	101.7	111.1	120.6	30



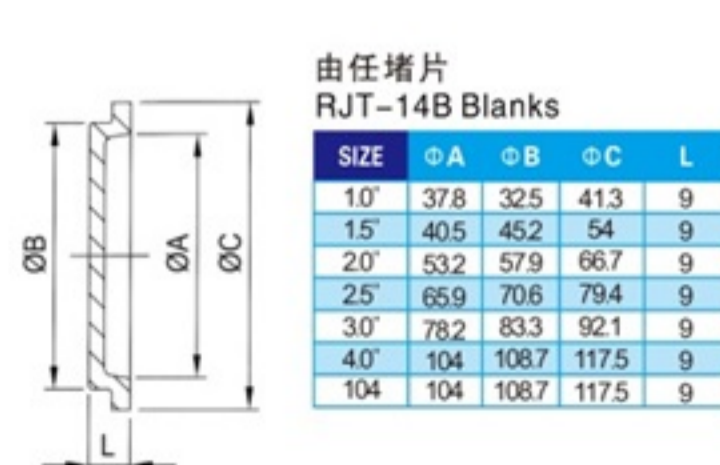
扩展式平云头
IDF Expanding Male IDF-15R

SIZE	ØA	ØB	C	L
1.0"	25.5	29.2	37.13x8T ACME	19.5
1.5"	38	42.5	50.65x8T ACME	19.5
2.0"	50.9	56.2	64.16x8T ACME	19.5
2.5"	63.6	69.9	77.76x8T ACME	25
3.0"	76.3	82.6	91.19x8T ACME	30
4.0"	101.7	108.8	118.2x8T ACME	35
4.0"	101.7	111.1	125.9x6T ACME	35



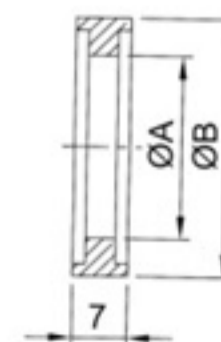
密封圈
RJT Seal Ring
(EPDM, Silicon, Viton)

SIZE	ØA	ØB	C
1.0"	33.3	6.6	32
1.5"	46	6.6	32
2.0"	58.7	6.6	32
2.5"	71.4	6.6	32
3.0"	84.1	6.6	32
4.0"	109.5	6.6	32
6.0"	162.6	6.6	32



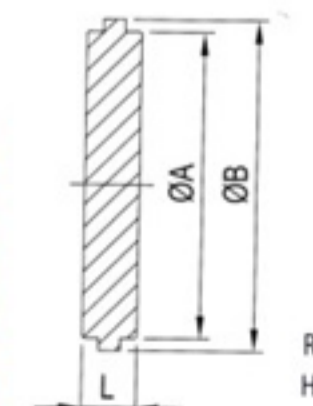
由任堵片
RJT-14B Blanks

SIZE	ØA	ØB	ØC	L
1.0"	37.8	32.5	41.3	9
1.5"	40.5	45.2	54	9
2.0"	53.2	57.9	66.7	9
2.5"	65.9	70.6	79.4	9
3.0"	78.2	83.3	92.1	9
4.0"	104	108.7	117.5	9
104	104	108.7	117.5	9



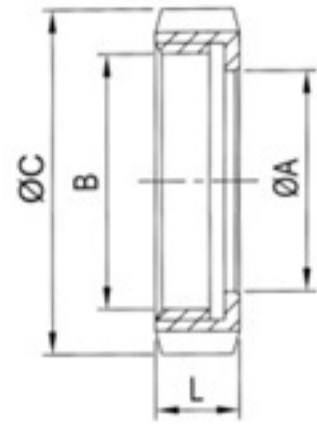
密封圈
IDF Seal Ring

SIZE	ØA	ØB
1.0"	23	32.5
1.5"	36	46
2.0"	49	59.5
2.5"	60.7	73.2
3.0"	73.2	86.5
4.0"	98	113
4.0"	98	119.6



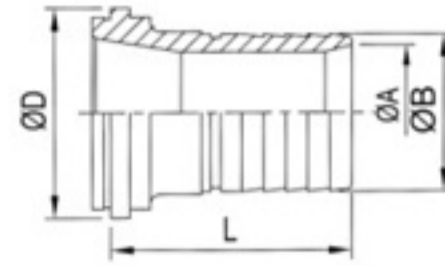
由任堵片
IDF-14B Blanks

SIZE	ØA	ØB	L
1.0"	29.2	33.8	10.5
1.5"	42.7	47	10.5
2.0"	56.2	60.5	10.5
2.5"	69.9	74	10.5
3.0"	82.6	87.5	10.5
4.0"	111.1	114.1	12.6
4.0"	111.1	120.6	12.6



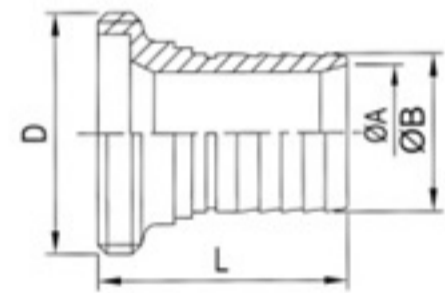
Mancon 4槽圆螺母
Mancon Nut 4 Slots M-13R

SIZE	ΦA	B	ΦC	L
DN33	37	39x11TPI WHIT	50	25
DN43	47	M55xP3.0	70	25
DN53	57	M67xP3.0	80	25
DN63	67	M79xP3.5	95	25
DN73	77	M90xP3.5	106	25
DN83	90	M102xP4.0	118	25
DN103	112	M125xP4.0	139	25



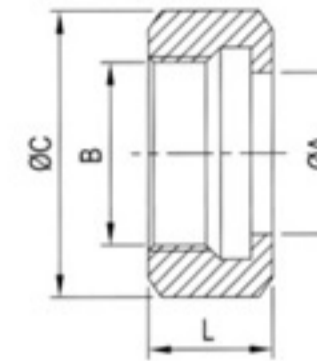
平接头式软管接头
Mancon Liner 14 Hose Adapter

SIZE	ΦA	ΦB	ΦD	L
DN40	34/36.5	40	50.8	82
DN50	47	50.5	63	92
DN60	59	63.2	75	102
DN70	66.3	70	85	104
DN80	71.5	75.5	97	110



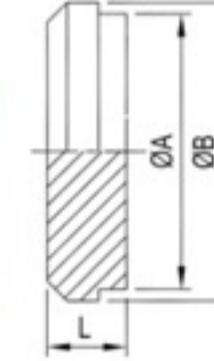
云头式软管接头
Mancon Male 15AHR Hose Adapter

SIZE	ΦA	ΦB	D	L
DN40	34/36.5	38	M55xP3.0	84
DN50	47	50.5	M67xP3.0	94
DN65	59	63.2	M79xP3.5	104
DN70	66.3	70	M90xP3.5	106
DN80	71.5	75.5	M102xP4.0	112



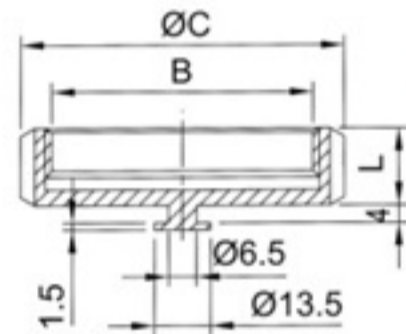
3A六角螺母
3A Hexagonal Nut 3A-13H

SIZE	ΦA	B	C	L
1.0"	30.3	38.02 ACME 8TPI	46	23
1.5"	43.4	51.54 ACME 8TPI	61.1	24.6
2.0"	56.5	65.05 ACME 8TPI	76.2	27
2.5"	69.6	78.56 ACME 8TPI	91.3	29.6
3.0"	82.7	92.08 ACME 8TPI	106.4	32.5
4.0"	108.9	120.14 ACME 6TPI	137.6	38.1



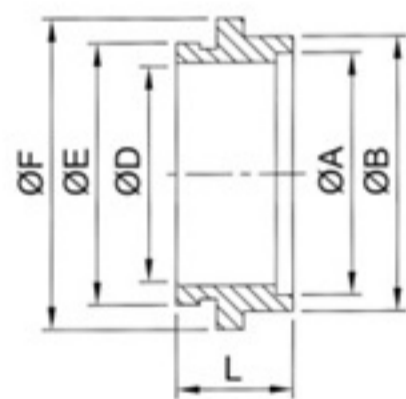
3A堵片
3A-16A

SIZE	ΦA	ΦB	L
1.0"	29.5	33.3	11.9
1.5"	42.6	46.8	14.3
2.0"	55.7	60.3	15.9
2.5"	68.8	73.8	16.7
3.0"	81.9	87.3	18.3
4.0"	108.1	114.3	20.6



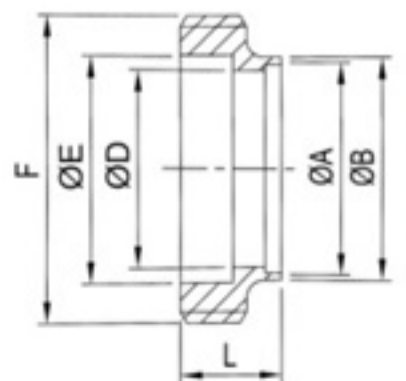
Mancon 4槽圆螺母
Mancon Blank Nut 4 Slots M-13RBN

SIZE	B	ΦC	L
DN33	39x11TPI WHIT	50	25
DN43	M55xP3.0	70	25
DN53	M67xP3.0	80	25
DN63	M79xP3.5	95	25
DN73	M90xP3.5	106	25
DN83	M102xP4.0	118	25
DN103	M125xP4.0	139	26



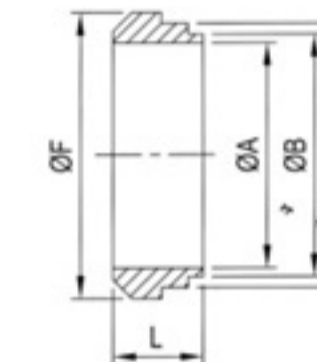
平接头
Mancon Liner M-14

SIZE	ΦA	ΦB	ΦD	ΦE	ΦF	L
DN33	33.3	36	28	31.5	38	22
DN38	38.2	46	35.9	44.5	50	29
DN40/43	43.3	46.3	40	44.5	50	22
DN50/53	53.3	56.3	50	54.5	62.5	22
DN51	51.2	56	48.5	54.5	62.5	29
DN60/63	63.3	66.3	60	64.5	73.5	22
DN70/73	73.3	76.3	70	74.5	85	22
DN76	72	76	70	74.5	85	22
DN80/83	83.3	86.3	80	84.5	96	22
DN103	104.2	108	100	104.5	119	22



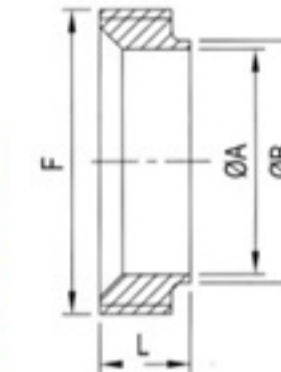
云头
Mancon Male M-15

SIZE	ΦA	ΦB	ΦD	ΦE	F	L
DN33	33.3	36.3	30	32	40.5x11TPI WHIT	22
DN38	38.2	46	35.9	45	M55xP3.0	30
DN43	43.3	46.3	40	45	M55xP3.0	22
DN51	51.2	56	48.5	55	M67xP3.0	30
DN53	53.3	56.3	50	55	M67xP3.0	22
DN63	63.3	66.3	60	66	M79xP3.5	22
DN73	73.3	76.3	70	76	M90xP3.5	22
DN76	72	76	70	76	M90xP3.5	22
DN83	83.3	86.3	80	86	M102xP4.0	22
DN103	104.2	108	100	106	M125xP4.0	22



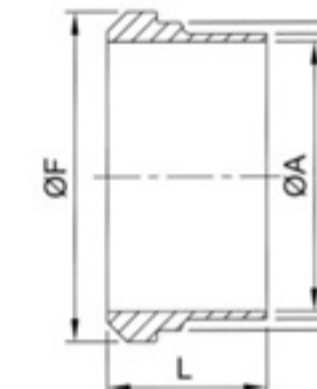
平接头
3A short Bevel Seat
Weld Liner 3A-14PRF

SIZE	ΦA	ΦB	ΦC	ΦF	L
1.0"	22.1	25.4	29.5	33.3	18.3
1.5"	34.8	38.1	42.6	46.8	18.3
2.0"	47.5	50.8	55.7	60.3	19.1
2.5"	60.2	63.5	68.8	73.8	22.3
3.0"	72.9	76.2	81.9	87.3	23.1
4.0"	97.6	101.6	108.1	114.3	26.2



云头
3A short Bevel Seat
Weld Male 3A-15TRF

SIZE	ΦA	ΦB	F	L
1.0"	22.1	25.4	37.13 ACME 8TPI	18.3
1.5"	34.8	38.1	50.65 ACME 8TPI	18.3
2.0"	47.5	50.8	64.17 ACME 8TPI	19.1
2.5"	60.2	63.5	77.67 ACME 8TPI	22.2
3.0"	72.9	76.2	91.19 ACME 8TPI	23.1
4.0"	97.6	101.6	119.25 ACME 6TPI	26.2



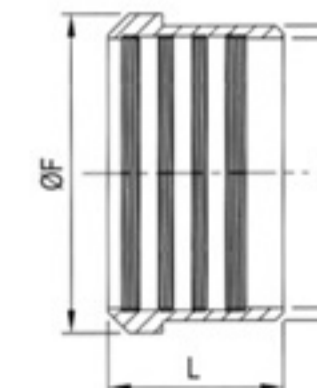
加长平接头
3A-14A Long Weld Liner

SIZE	ΦA	ΦB	ΦC	ΦF	L
1.0"	22.2	25.4	29.5	33.3	34.9
1.5"	34.9	38.1	42.6	46.8	38.1
2.0"	47.6	50.8	55.7	60.3	38.1
2.5"	60.3	63.5	68.8	73.8	44.5
3.0"	73	76.2	81.9	87.3	44.5
4.0"	97.6	101.6	108.1	114.3	44.5



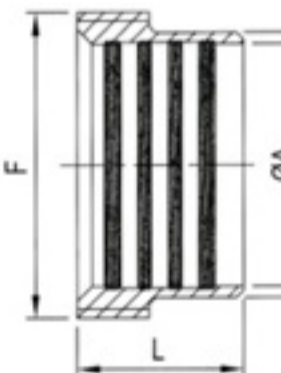
加长云头
3A-15A Long Weld Male

SIZE	ΦA	ΦB	F	L
1.0"	22.1	25.4	37.13 ACME 8TPI	34.9
1.5"	34.9	38.1	50.65 ACME 8TPI	38.1
2.0"	47.6	50.8	64.16 ACME 8TPI	38.1
2.5"	60.2	63.5	77.67 ACME 8TPI	44.5
3.0"	73	76.2	91.19 ACME 8TPI	44.5
4.0"	97.6	101.6	119.25 ACME 6TPI	44.5



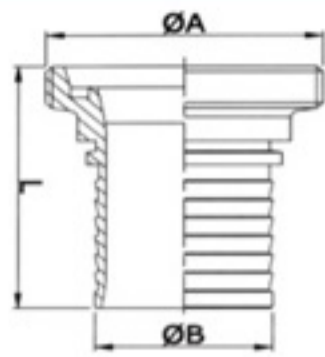
扩展式平接头
3A-14R Recessless Liner

SIZE	ΦA	ΦB	ΦF	L
1.0"	25.5	29.5	33.3	19.1
1.5"	38.2	42.6	46.8	28.6
2.0"	50.9	55.7	60.3	33.3
2.5"	63.6	68.8	73.8	34.9
3.0"	76.3	81.9	87.3	36.5
4.0"	101.7	108.1	114.3	38.1



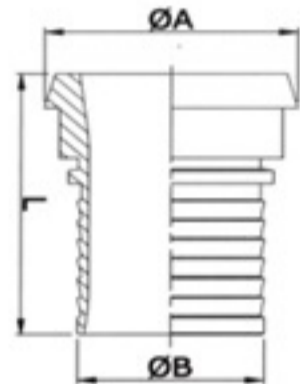
扩展式平云头
3A-15R Recessless Male

SIZE	ΦA	ΦB	F	L
1.0"	25.5	29.5	37.13 ACME 8TPI	20.6
1.5"	38.2	42.6	50.65 ACME 8TPI	28.6
2.0"	50.9	55.7	64.17 ACME 8TPI	34.9
2.5"	63.6	68.8	77.67 ACME 8TPI	38.1
3.0"	76.3	81.9	91.19 ACME 8TPI	41.3
4.0"	101.7	108.1	119.25 ACME 6TPI	41.3



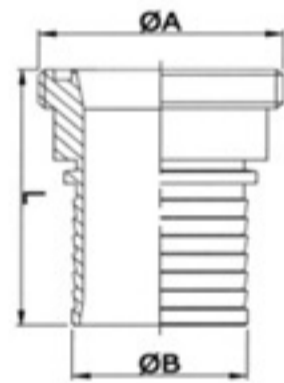
DIN公头

SIZE	ØA	ØB	L
3/4"	RD44X1/6	19	64
1.0"	RD52x1/6	25	73
1.5"	RD65x1/6	38	74
2.0"	RD78x1/6	50	80.5
2.5"	RD95x1/6	63	106.5
3.0"	RD110x1/4	76	118.5
4.0"	RD130x1/4	102	128.5



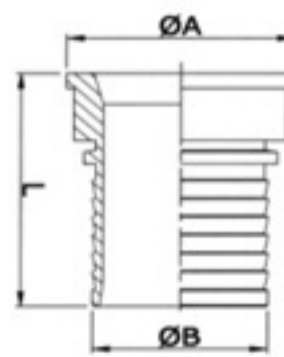
DIN母头

SIZE	ØA	ØB	L
3/4"	38.5	19	61
1.0"	44	25	66
1.5"	56	38	69
2.0"	68	50	82.5
2.5"	86	63	100.5
3.0"	100	76	108.5
4.0"	121	102	124.5



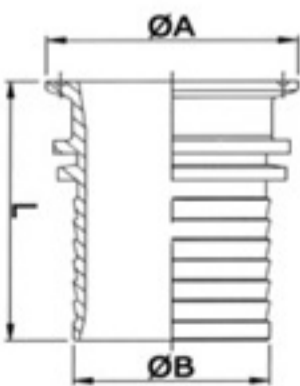
SMS公头

SIZE	ØA	ØB	L
1.0"	RD40x1/6	25	69
1.5"	RD60x1/6	38	74
2.0"	RD70x1/6	50	89.5
2.5"	RD85x1/6	63	102.5
3.0"	RD98x1/6	76	123.5
4.0"	RD125x1/4	102	128.5



SMS母头

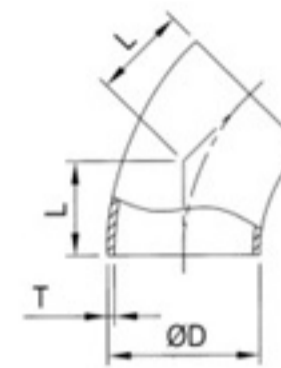
SIZE	ØA	ØB	L
1.0"	35.5	25	69
1.5"	55	38	73
2.0"	65	50	76.5
2.5"	80	63	99.5
3.0"	93	76	103.5
4.0"	118	102	123.5



卡盘软管接头

SIZE	ØA	ØB	L
1/2"	25.2/34	13	62
3/4"	25.2/34	19	62
1.0"	50.5	25	67
1.25"	50.5	32	69
1.5"	50.5	38.5	69
2.0"	64	50	77.5
2.5"	77.5	63	93.5
3.0"	91	76	107.5
4.0"	119	102	117.5

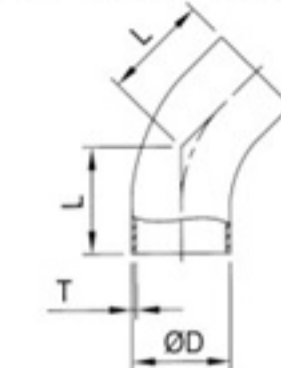
45° Short Elbow



45° 短弯
C.2WK-45° Elbow

SIZE	ØD	L	T
1/2"	12.7	13.16	1.65
3/4"	19.05	23.8	1.65
1.0"	25.4	15.8	1.65
1.5"	38.1	23.8	1.65
2.0"	50.8	31.75	1.65
2.5"	63.5	39.6	1.65
3.0"	76.2	47.6	1.65
4.0"	101.6	63.5	2.10
6.0"	152.4	95.25	2.77

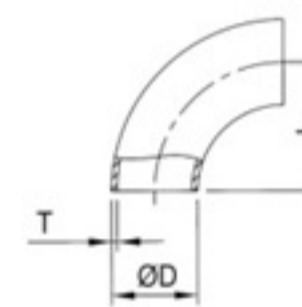
45° Long Elbow



45° 长弯
C.L2KS-45° Elbow

SIZE	ØD	L	T
1/2"	12.7	30.2	1.65
3/4"	19.05	30.2	1.65
1.0"	25.4	30.2	1.65
1.5"	38.1	41.3	1.65
2.0"	50.8	58.7	1.65
2.5"	63.5	76.2	1.65
3.0"	76.2	93.7	1.65
4.0"	101.6	122.2	2.10
6.0"	152.4	158.2	2.80

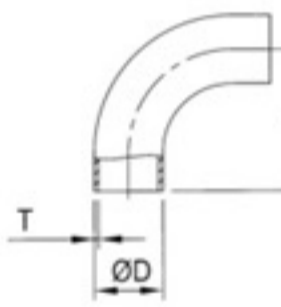
90° Short Bend



90° 短弯
C.2WCL-90° Bend

SIZE	ØD	L	T
1/2"	12.7	19.05	1.65
3/4"	19.05	28.58	1.65
1.0"	25.4	38.1	1.65
1.5"	38.1	57.2	1.65
2.0"	50.8	76.2	1.65
2.5"	63.5	95.25	1.65
3.0"	76.2	114.3	1.65
4.0"	101.6	152.4	2.10
6.0"	152.4	228.6	2.77

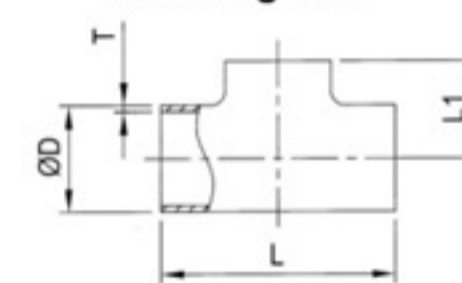
90° Long Bend



90° 长弯
C.L2S-90° Bend

SIZE	ØD	L	T
1/2"	12.7	45	1.65
3/4"	19.05	60	1.65
1.0"	25.4	52.4	1.65
1.5"	38.1	74.6	1.65
2.0"	50.8	103.2	1.65
2.5"	63.5	131.8	1.65
3.0"	76.2	160.3	1.65
4.0"	101.6	211.1	2.10
6.0"	152.4	292.1	2.80

Welding Tee



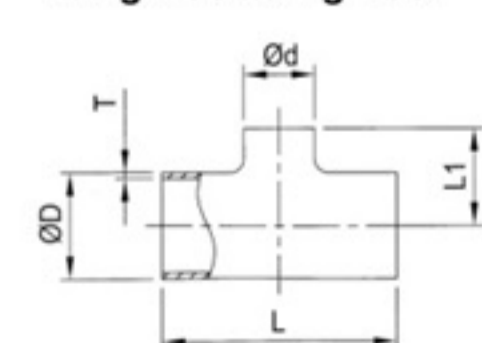
短焊三通
C.L7WW-Short Tee

SIZE	ØD	L	L1	T
1/2"	12.7	38.1	19.05	1.65
3/4"	19.05	57.2	28.6	1.65
1.0"	25.4	57.2	28.6	1.65
1.5"	38.1	84.2	42.1	1.65
2.0"	50.8	104.8	52.4	1.65
2.5"	63.5	119.0	59.5	1.65
3.0"	76.2	131.8	65.9	1.65
4.0"	101.6	174.6	87.3	2.10

长焊三通
C.7W-Long Tee

SIZE	ØD	L	L1	T
1/2"	12.7	95.2	47.6	1.65
3/4"	19.05	95.2	47.6	1.65
1.0"	25.4	95.2	47.6	1.65
1.5"	38.1	114.4	57.2	1.65
2.0"	50.8	152.4	76.2	1.65
2.5"	63.5	152.4	76.2	1.65
3.0"	76.2	165.2	82.6	1.65
4.0"	101.6	196.8	98.4	2.10
6.0"	152.4	285.8	142.9	2.77

Long Reducing Tee



长型变径三通
C.L7RW-Long Reducing Tee

SIZE	ØD	Ød	L	L1	T
1.5"x1.0"	38.1	25.4	114.3	54	1.65
2.0"x1.0"	50.8	25.4	152.4	60.30	1.65
2.0"x1.5"	50.8	38.1	152.4	63.50	1.65
2.5"x1.5"	63.5	38.1	152.4	69.85	1.65
2.5"x2.0"	63.5	50.8	152.4	82.55	1.65
3.0"x1.5"	76.2	38.1	165.1	76.20	1.65
3.0"x2.0"	76.2	50.8	165.1	88.9	1.65
3.0"x2.5"	76.2	63.5	165.1	82.55	1.65
4.0"x2.0"	101.6	50.8	196.8	101.6	2.10
4.0"x2.5"	101.6	63.5	196.8	95.25	2.10
4.0"x3.0"	101.6	76.2	196.8	95.25	2.10

短变径三通
C.L7RW-Short Reducing Tee

SIZE	ØD	Ød	L	L1	T
1.5"x1.0"	38.1	25.4	84.2	34.9	1.65
2.0"x1.0"	50.8	25.4	104.8	41.3	1.65
2.0"x1.5"	50.8	38.1	104.8	48.4	1.65
2.5"x1.5"	63.5	25.4	119	47.63	1.65
2.5"x2.0"	63.5	38.1	119	54.75	1.65
2.5"x2.5"	63.5	50.8	119	58.7	1.65
3.0"x1.0"	76.2	25.4	131.8	54.0	1.65
3.0"x1.5"	76.2	38.1	131.8	65.1	1.65
3.0"x2.0"	76.2	50.8	131.8	65.1	1.65
3.0"x2.5"	76.2	63.5	131.8	65.9	1.65
4.0"x1.0"	101.6	25.4	174.6	66.7	2.1
4.0"x1.5"	101.6	38.1	174.6	108.0	2.1
4.0"x2.0"	101.6	50.8	174.6	108.0	2.1
4.0"x2.5"	101.6	63.5	174.6	108.0	2.1
4.0"x3.0"	101.6	76.2	174.6	108.0	2.1



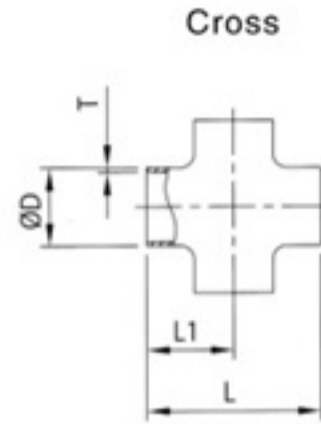
3A 管件系列 3A Pipe Line(mm)

- 诚信为本
- Honesty

- 服务至上
- Service-oriented



3A 管件系列 3A Pipe Line(mm)



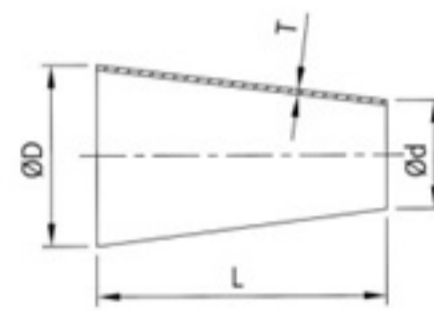
焊接四通
C.L9WWWW-Short Cross

SIZE	ØD	L	L1	T
1.0"	25.4	57.2	28.6	1.65
1.5"	38.1	84.2	42.1	1.65
2.0"	50.8	104.8	52.4	1.65
2.5"	63.5	119.0	59.5	1.65
3.0"	76.2	131.8	65.9	1.65
4.0"	101.6	174.6	87.3	2.10

加长四通
C.L9W-Long Cross

SIZE	ØD	L	L1	T
1.0"	25.4	95.2	47.6	1.65
1.5"	38.1	114.4	57.2	1.65
2.0"	50.8	152.4	76.2	1.65
2.5"	63.5	152.4	76.2	1.65
3.0"	76.2	165.2	82.6	1.65
4.0"	101.6	196.8	98.4	2.10

Concentric Reducer

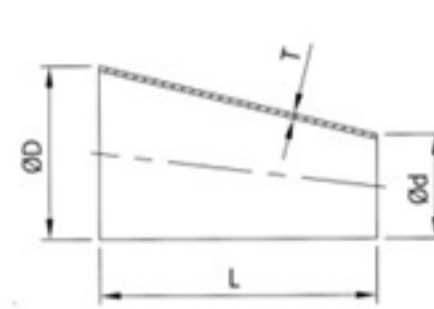


焊接同心大小头
C.L31-Concentric Reducer

SIZE	ØD	Ød	L	T
3/4"x1/2"	19.05	12.7	50.8	1.65
1.0"x1/2"	25.4	12.7	50.8	1.65
1.5"x1/2"	38.1	12.7	101.6	1.65
2.0"x1/2"	50.8	12.7	152.4	1.65
1.0"x3/4"	25.4	19.05	25.4	1.65
1.5"x3/4"	38.1	19.05	76.2	1.65
1.5"x1.0"	38.1	25.4	50.8	1.65
2.0"x1.0"	50.8	25.4	101.6	1.65
2.0"x1.5"	50.8	38.1	50.8	1.65
2.5"x1.0"	63.5	25.4	152.4	1.65
2.5"x1.5"	63.5	38.1	101.6	1.65
2.5"x2.0"	63.5	50.8	50.8	1.65

SIZE	ØD	Ød	L	T
3.0"x1.0"	76.2	25.4	203.2	1.65
3.0"x1.5"	76.2	38.1	152.4	1.65
3.0"x2.0"	76.2	50.8	101.6	1.65
3.0"x2.5"	76.2	63.5	50.8	1.65
4.0"x1.5"	101.6	38.1	254	2.10
4.0"x2.0"	101.6	50.8	203.2	2.10
4.0"x2.5"	101.6	63.5	152.4	2.10
4.0"x3.0"	101.6	76.2	101.6	2.10
6.0"x2.0"	152.4	50.8	406.4	2.77
6.0"x3.0"	152.4	76.2	304.8	2.77
6.0"x4.0"	152.4	101.6	203.2	2.77

Eccentric Reducer

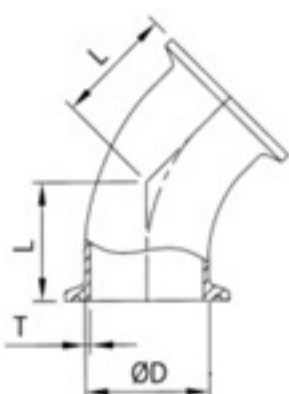


焊接偏心大小头
C.L32-Eccentric Reducer

SIZE	ØD	Ød	L	T
3/4"x1/2"	19.05	12.7	25.4	1.65
1.0"x1/2"	25.4	12.7	50.8	1.65
1.5"x1/2"	38.1	12.7	101.6	1.65
2.0"x1/2"	50.8	12.7	152.4	1.65
1.0"x3/4"	25.4	19.05	25.4	1.65
1.5"x3/4"	38.1	19.05	76.2	1.65
2.0"x3/4"	50.8	19.05	127	1.65
1.5"x1.0"	38.1	25.4	50.8	1.65
2.0"x1.0"	50.8	25.4	101.6	1.65
2.0"x1.5"	50.8	38.1	50.8	1.65
2.5"x1.0"	63.5	25.4	152.4	1.65
2.5"x1.5"	63.5	38.1	101.6	1.65

SIZE	ØD	Ød	L	T
2.5"x2.0"	63.5	50.8	50.8	1.65
3.0"x1.0"	76.2	25.4	203.2	1.65
3.0"x1.5"	76.2	38.1	152.4	1.65
3.0"x2.0"	76.2	50.8	101.6	1.65
3.0"x2.5"	76.2	63.5	50.8	1.65
4.0"x1.5"	101.6	38.1	254	2.10
4.0"x2.0"	101.6	50.8	203.2	2.10
4.0"x2.5"	101.6	63.5	152.4	2.10
4.0"x3.0"	101.6	76.2	101.6	2.10
6.0"x2.0"	152.4	50.8	406.4	2.77
6.0"x3.0"	152.4	76.2	304.8	2.77
6.0"x4.0"	152.4	101.6	203.2	2.77

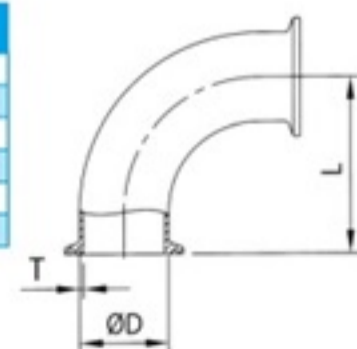
45° Clamp Elbow



45° 快装弯头
C.2KMP-45° Elbow

SIZE	ØD	L	T
1.0"	25.4	28.5	1.65
1.5"	38.1	36.5	1.65
2.0"	50.8	44.45	1.65
2.5"	63.5	52.3	1.65
3.0"	76.2	60.3	1.65
4.0"	101.6	76.2	2.10

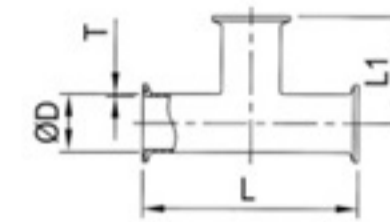
90° Clamp Bend



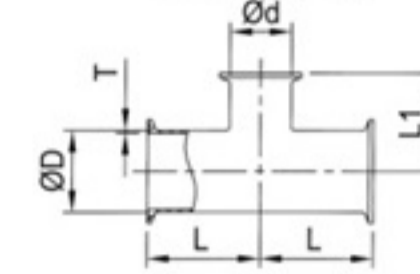
90° 快装弯头
C.2CMP-90° Bend

SIZE	ØD	L	T
1.2"	12.7	41.3	1.65
3/4"	19.05	41.3	1.65
1.0"	25.4	50.8	1.65
1.5"	38.1	69.9	1.65
2.0"	50.8	88.9	1.65
2.5"	63.5	107.95	1.65
3.0"	76.2	127	1.65
4.0"	101.6	168.2	2.10

快装三通
Clamp Tee



快装异径三通
Reducing Tee



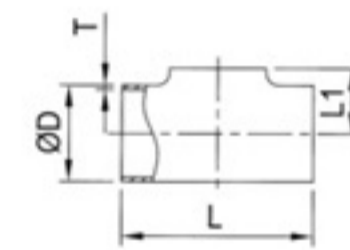
快装异径三通
C.L7RMP-Reducing Long Tee Clamp End

SIZE	ØD	Ød	L	L1
1.5"x1.0"	38.1	25.4	69.85	66.68
2.0"x1.0"	50.8	25.4	88.9	73.0
2.0"x1.5"	50.8	38.1	88.9	76.2
2.0"x1.5"	63.5	38.1	88.9	82.55
2.5"x2.0"	63.5	50.8	88.9	95.25
3.0"x1.5"	76.2	38.1	95.25	88.9
3.0"x2.0"	76.2	50.8	95.25	101.6
3.0"x2.5"	76.2	63.5	95.25	95.25
4.0"x2.0"	101.6	50.8	114.2	114.3
4.0"x2.5"	101.6	63.5	114.2	107.95
4.0"x3.0"	101.6	76.2	114.2	107.95

快装三通
C.7MP-Clamp Long Tee

SIZE	ØD	L	L1	T
1/2"	12.7	63.5	31.75	1.65
3/4"	19.05	120.6	60.3	1.65
1.0"	25.4	120.6	60.3	1.65
1.5"	38.1	139.8	69.9	1.65
2.0"	50.8	177.8	88.9	1.65
2.5"	63.5	177.8	88.9	1.65
3.0"	76.2	190.6	95.3	1.65
4.0"	101.6	228.4	114.2	2.10

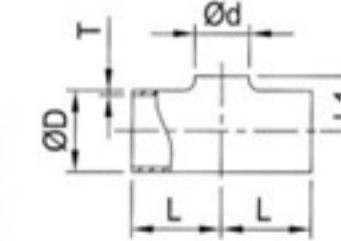
焊接等径三通
Equal Tee



等径平口三通
C.7WW Equal Tee W/O Straight end

SIZE	ØD	L	L1	T
1.0"	25.4	57.2	16	1.65
1.5"	38.1	84.2	22	1.65
2.0"	50.8	104.8	29	1.65
2.5"	63.5	119.0	35	1.65
3.0"	76.2	131.8	41	1.65
4.0"	101.6	174.6	54	2.10

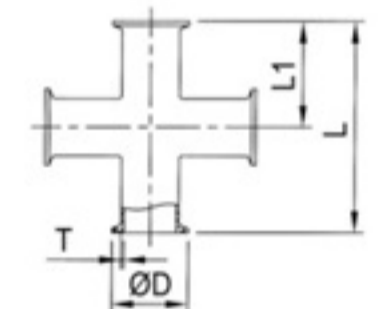
焊接异径三通
Reducing Tee



异径平口三通
C.7RWW W/O Straight end Reducing Tee

SIZE	ØD	d	L	L1
1.5"x1.0"	38.1	25.4	42.1	22
2.0"x1.5"	50.8	38.1	52.4	29
2.5"x2.0"	63.5	50.8	59.5	35
3.0"x2.0"	76.2	50.8	65.9	41
3.0"x2.5"	76.2	63.5	65.9	41
4.0"x2.0"	101.6	50.8	117.5	54
4.0"x2.5"	101.6	63.5	117.5	54
4.0"x3.0"	101.6	76.2	117.5	54

快装四通
Clamp Cross



同心/偏心快装大小头
C.32-14MP Eccentric Reducer Clamp End
C.31-14MP Concentric Reducer Clamp End

SIZE	ØD	Ød	T
1.5"x1.0"	38.1	25.4	76.2
2.0"x1.5"	50.8	38.1	76.2
2.5"x1.5"	63.5	38.1	127
2.5"x2.0"	63.5	50.8	76.2
3.0"x1.5"	76.2	38.1	177.8
3.0"x2.0"	76.2	50.8	127
3.0"x2.5"	76.2	63.5	76.2
4.0"x1.5"	101.6	38.1	282.5
4.0"x2.0"	101.6	50.8	231.7
4.0"x2.5"	101.6	63.5	180.9
4.0"x3.0"	101.6	76.2	130.1

快装四通\十字通
C.9MP-Clamp Long Cross

SIZE	ØD	L	L1	T
1.0"	25.4	120.6	60.3	1.65
1.5"	38.1	139.8	69.9	1.65
2.0"	50.8	177.8	88.9	1.65
2.5"	63.5	177.8	88.9	1.65
3.0"	76.2	190.6	95.3	1.65
4.0"	101.6	228.4	114.2	2.10



SMS管件系列 SMS Pipe Line (mm)

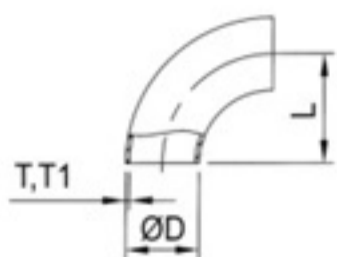
- 诚信为本
- Honesty

- 服务至上
- Service-oriented



DIN管件系列 DIN Pipe Line(mm)

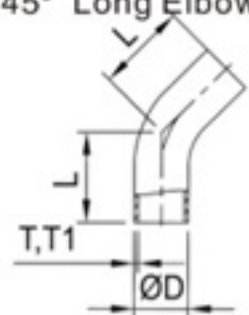
90° 短弯
90° Short Elbow



SMS 90 B 90° Short Elbow

DN	ØD	L	T	T1
25	25.0	37.5	1.25	1.5
38	38.0	57.0	1.25	1.5
51	51.0	76.5	1.25	1.5
63.5	63.5	95.25	1.5	1.5
76	76.1	114.15	1.6	2.0
104	104	152.1	2.0	2.0

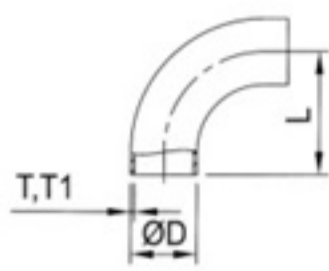
45° 长弯
45° Long Elbow



SMS 45 LB 45° Long Elbow

DN	ØD	L	T	T1
25	25.0	42.33	1.25	1.5
38	38.0	48.72	1.25	1.5
51	51.0	58.15	1.25	1.5
63.5	63.5	75.3	1.5	1.5
76	76.1	79.37	1.6	2.0
104	104	85.54	2.0	2.0

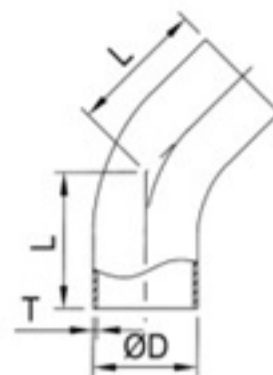
90° 长弯
90° Long Elbow



SMS 90 LB90° Long Elbow

DN	ØD	L	T	T1
25	25.0	55	1.25	1.5
38	38.0	70	1.25	1.5
51	51.0	82	1.25	1.5
63.5	63.5	105	1.5	1.5
76	76.0	110	1.6	2.0
101.6	101.6	150	2.0	2.0
104	104	150	2.0	2.0

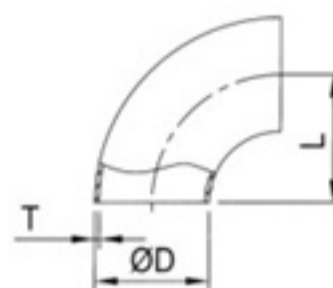
DIN 45° 长弯
DIN 45° Long Elbow



DIN 45 LB

SIZE	ØD	L	T
DN25	28	20	1.5
DN32	34	23	1.5
DN40	40	20	1.5
DN50	52	27	1.5
DN65	70	30	2.0
DN80	85	33	2.0
DN100	104	40	2.0

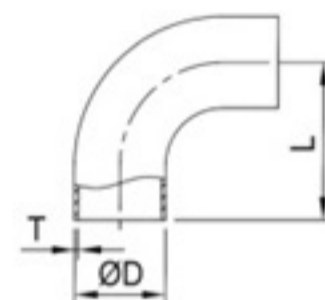
DIN 90° 短弯
DIN 90° Short Bend



DIN 90 B

SIZE	ØD	L	T
DN20	22	40	1.5
DN25	28	50	1.5
DN32	34	55	1.5
DN40	40	60	1.5
DN50	52	70	1.5
DN65	70	80	2.0
DN80	85	90	2.0
DN100	101.6	152.4	2.0
DN100	104	100	2.0

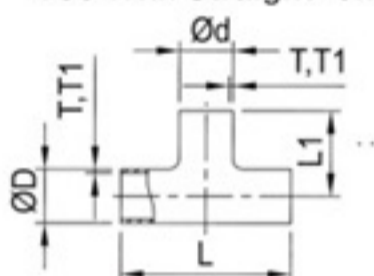
DIN 90° 长弯
DIN 90° Long Bend



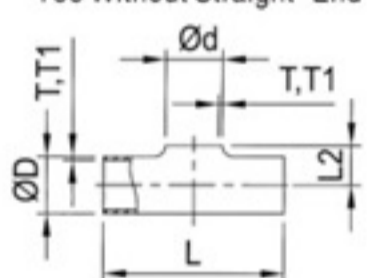
DIN 90 LB

SIZE	ØD	L	T
DN25	28	70	1.5
DN32	34	78	1.5
DN40	40	85	1.5
DN50	52	97	1.5
DN65	70	110	2.0
DN80	85	118	2.0
DN100	101.6	150	2.0
DN100	104	140	2.0

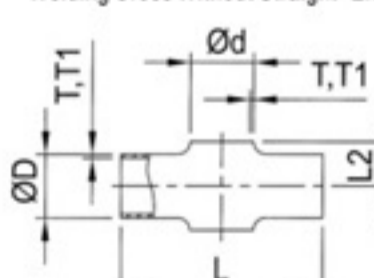
SMS等径长焊三通
SMS ET
Tee With Straight-end



平口三通
SMS PT
Tee Without Straight-End

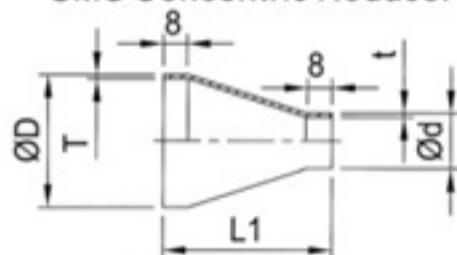


平口四通
SMS PC
Welding Cross Without Straight-End

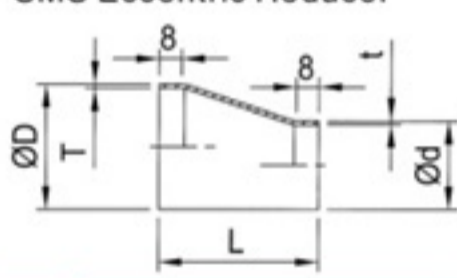


DN	ØD	Ød	T	T1	L	L1	L2
25	25.0	25.0	1.25	1.5	110	55	140
38	38.0	38.0	1.25	1.5	140	70	210
51	51.0	51.0	1.25	1.5	164	82	285
63.5	63.5	63.5	1.5	1.5	210	105	360
76.1	76.1	76.1	1.6	2.0	220	110	430
104	104	104	2.0	2.0	300	150	580

SMS同心大小头
SMS CR
SMS Concentric Reducer

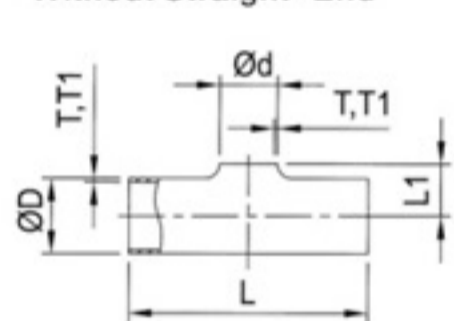


SMS偏心大小头
SMS ER
SMS Eccentric Reducer



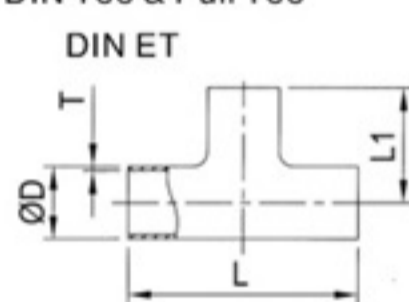
DN	ØD	Ød	T	t	L1	L
38x25	38.0	25.0	1.25	1.25	46	39
51x25	51.0	25.0	1.25	1.25	68	57
51x38	51.0	38.0	1.25	1.25	47	39
63.5x25	63.5	25.0	1.5	1.25	92	74
63.5x38	63.5	38.0	1.5	1.25	70	57
63.5x51	63.5	51.0	1.5	1.25	44	39
76x25	76.1	25.0	1.6	1.25	-	92
76x38	76.1	38.0	1.6	1.25	92	74
76x51	76.1	51.0	1.6	1.25	68	57
76x63.5	76.1	63.5	1.6	1.50	47	39
104x51	104	51.0	2.0	1.25	117	95
104x63.5	104	63.5	2.0	1.50	94	78
104x76	104	76.1	2.0	1.60	74	60

变径平口三通
SMS PRT
Welding Reducing Tee
Without Straight-End

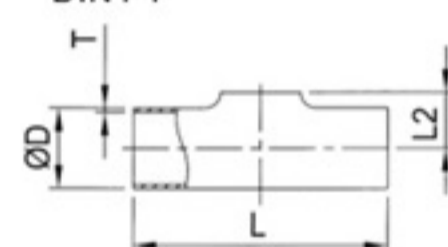


DN	ØD	Ød	T	T1	L	L1
38x25	38.0	25.0	1.25	1.5	140	210
51x25	51.0	25.0	1.25	1.5	164	290
51x38	51.0	38.0	1.25	1.5	164	290
63.5x25	63.5	25.0	1.5	1.5	210	345
63.5x38	63.5	38.0	1.5	1.5	210	350
63.5x51	63.5	51.0	1.5	1.5	210	360
76.1x25	76.1	25.0	1.6	2.0	220	410
76.1x38	76.1	38.0	1.6	2.0	220	420
76.1x51	76.1	51.0	1.6	2.0	220	430
76.1x63.5	76.1	63.5	1.6	2.0	220	430
104x25	104	25.0	2.0	2.0	300	560
104x38	104	38.0	2.0	2.0	300	560
104x51	104	51.0	2.0	2.0	300	570
104x63.5	104	63.5	2.0	2.0	300	580
104x76.1	104	76.1	2.0	2.0	300	580

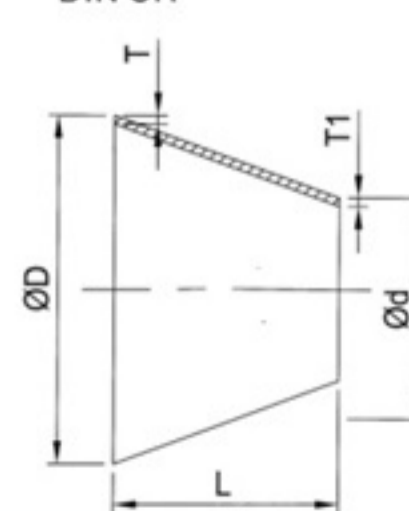
DIN等径三通
DIN Tee & Pull Tee
DIN ET



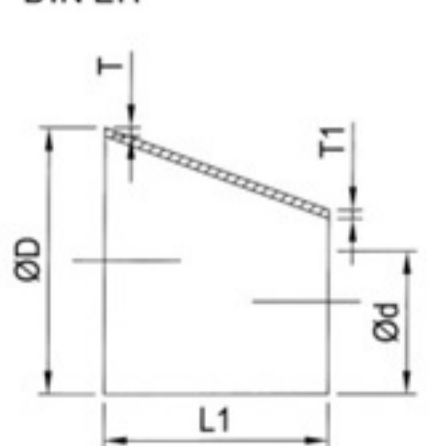
DIN平口三通
DIN PT



DIN同心大小头
DIN Concentric Reducer
DIN CR



DIN偏心大小头
DIN ER

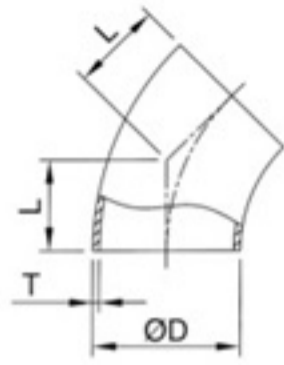


SIZE	ØD	L	L1	L2	T
DN20	22	94	47	13	1.5
DN25	28	100	50	15.5	1.5
DN32	34	110	55	19	1.5
DN40	40	120	60	22	1.5
DN50	52	140	70	28.5	1.5
DN65	70	160	80	39.5	2.0
DN80	85	180	90	46.5	2.0
DN100	101.6	300	150	56	2.0
DN100	104	200	100	58	2.0

SIZE	ØD	Ød	T	L	L1	T1
32x25	34	28	1.5	25	16.5	1.5
40x25	40	28	1.5	23	33	1.5
40x32	40	34	1.5	23	16.5	1.5
50x25	52	28	1.5	27	66	1.5
50x32	52	34	1.5	28	49.5	1.5
50x40	52	40	1.5	27	33	1.5
65x25	70	28	1.5	35	75	1.5
65x40	70	40	2.0	39	77	1.5
65x50	70	52	2.0	29	44	1.5
80x50	85	52	2.0	45	85	1.5
80x65	85	70	2.0	33	41.2	2.0
100x50	104	52	2.0	50	137.5	1.5
100x65	104	70	2.0	44	93.5	2.0
100x80	104	85	2.0	60	52.5	2.0



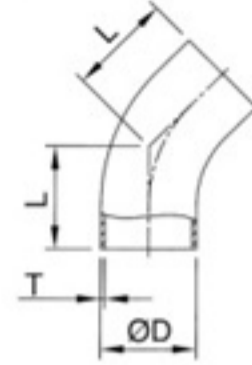
45° 短弯
45° Short Elbow



45° Elbow

SIZE	ΦD	L	T
1.0"	25.4	15.8	1.65
1.5"	38.1	23.8	1.65
2.0"	50.8	31.75	1.65
2.5"	63.5	39.6	1.65
3.0"	76.2	47.6	1.65
4.0"	101.6	63.5	2.1

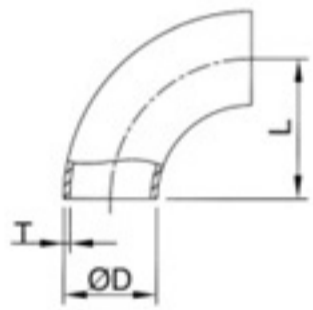
45° 长弯
45° Long Elbow



45° Elbow

SIZE	ΦD	L	T
1.0"	25.4	30.2	1.65
1.5"	38.1	41.3	1.65
2.0"	50.8	58.7	1.65
2.5"	63.5	76.2	1.65
3.0"	76.2	93.7	1.65
4.0"	101.6	122.2	2.1

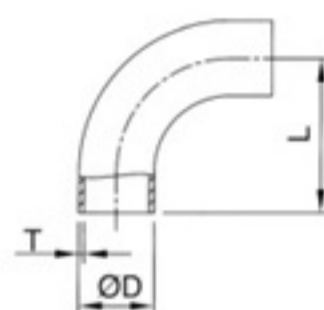
90° 短弯
90° Short Elbow



90° Bend

SIZE	ΦD	L	T
1.0"	25.4	38.1	1.65
1.5"	38.1	57.2	1.65
2.0"	50.8	76.2	1.65
2.5"	63.5	95.25	1.65
3.0"	76.2	114.3	1.65
4.0"	101.6	152.4	2.10

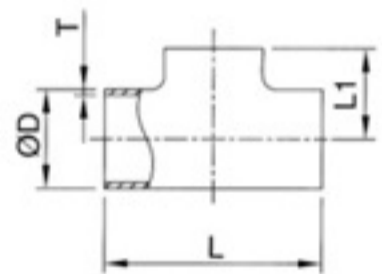
90° 长弯
90° Long Elbow



90° Bend

SIZE	ΦD	L	T
1.0"	25.4	52.4	1.65
1.5"	38.1	74.6	1.65
2.0"	50.8	103.2	1.65
2.5"	63.5	131.8	1.65
3.0"	76.2	160.3	1.65
4.0"	101.6	211.1	2.1

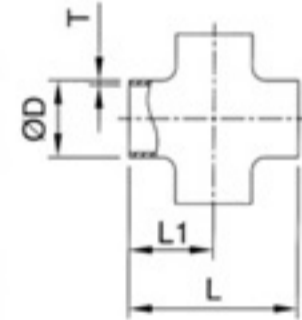
等径三通
Welding Tee



Tee

SIZE	ΦD	L	L1	T
1.0"	25.4	95.2	47.6	1.65
1.5"	38.1	114.4	57.2	1.65
2.0"	50.8	152.4	76.2	1.65
2.5"	63.5	152.4	76.2	1.65
3.0"	76.2	165.2	82.6	1.65
4.0"	101.6	196.8	98.4	2.1

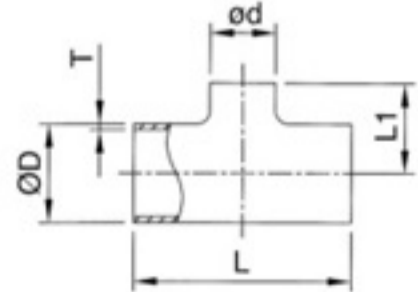
四通
Cross



Cross

SIZE	ΦD	L	L1	T
1.0"	25.4	95.2	47.6	1.65
1.5"	38.1	114.4	57.2	1.65
2.0"	50.8	152.4	76.2	1.65
2.5"	63.5	152.4	76.2	1.65
3.0"	76.2	165.2	82.6	1.65
4.0"	101.6	196.8	98.4	2.1

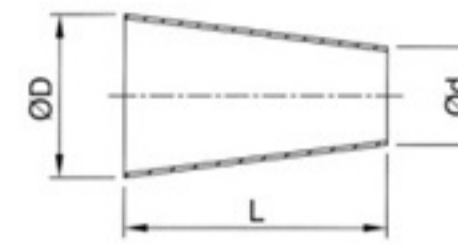
异径三通
Reducing Tee



Reducing Tee

SIZE	ΦD	Φd	L	L1	T
1.5"x1.0"	38.1	25.4	114.3	53.98	1.65
2.0"x1.0"	50.8	25.4	152.4	60.3	1.65
2.0"x1.5"	50.8	38.1	152.4	63.5	1.65
2.5"x1.5"	63.5	38.1	152.4	69.85	1.65
2.5"x2.0"	63.5	50.8	152.4	82.55	1.65
3.0"x1.5"	76.2	38.1	165.1	76.2	1.65
3.0"x2.0"	76.2	50.8	165.1	88.90	1.65
3.0"x2.5"	76.2	63.5	165.1	82.55	1.65
4.0"x2.0"	101.6	50.8	196.8	101.6	2.1
4.0"x2.5"	101.6	63.5	196.8	95.25	2.1
4.0"x3.0"	101.6	76.2	196.8	95.25	2.1

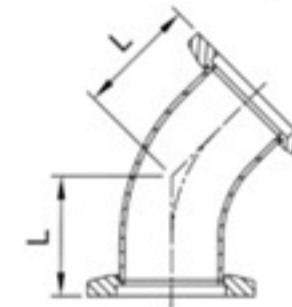
同心大小头
Concentric Reducer



Concentric Reducer

SIZE	ΦD	Φd	L	T
15"x10"	38.1	25.4	50.8	1.65
20"x15"	50.8	38.1	50.8	1.65
25"x15"	63.5	38.1	101.6	1.65
25"x20"	63.5	50.8	50.8	1.65
30"x15"	76.2	38.1	152.4	1.65
30"x20"	76.2	50.8	101.6	1.65
30"x25"	76.2	63.5	50.8	1.65
40"x15"	101.6	38.1	254	2.1
40"x20"	101.6	50.8	203.2	2.1
40"x25"	101.6	63.5	152.4	2.1
40"x30"	101.6	76.2	101.6	2.1

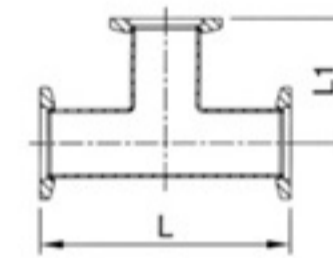
45° 快装弯头
45° Elbow Flange



Tube

SIZE	O.D	L
KF25	1.0"	28.44
KF40	1.5"	42.67
KF50	2.0"	50.54

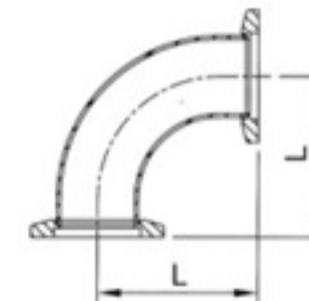
快装三通
Tee Flange



Tube

SIZE	O.D	L	L1
KF25	1.0"	100.07	50.03
KF40	1.5"	130.04	65.02
KF50	2.0"	139.95	70.1

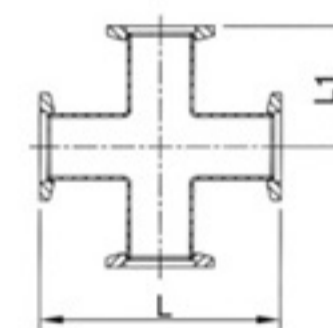
90° 快装弯头
90° Elbow Flange



Tube

SIZE	O.D	L
KF25	1.0"	50.03
KF40	1.5"	65.02
KF50	2.0"	70.1

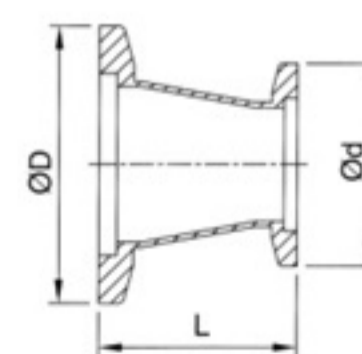
快装四通
4-Way Cross Flange



Tube

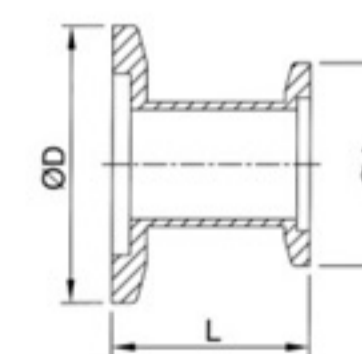
SIZE	O.D	L	L1
KF25	1.0"	100.09	50.03
KF40	1.5"	130.04	65.02
KF50	2.0"	139.95	70.1

同心大小头
Conical Reducer



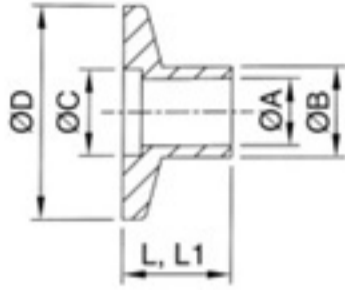
ΦD	Φd	L
KF25	KF16	39.9
KF40	KF16	39.9
KF40	KF25	39.9
KF50	KF16	39.9
KF50	KF25	39.9
KF50	KF40	39.9

直型大小头
Straight Reducer



ΦD	Φd	L
KF25	KF16	39.9
KF40	KF16	39.9
KF40	KF25	39.9
KF50	KF16	39.9
KF50	KF25	39.9
KF50	KF40	39.9

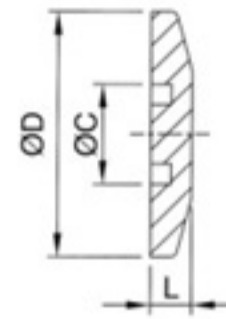
焊法兰
Weld Flange



Weld Flanges

SIZE	ΦA	ΦB	ΦC	ΦD	L	L1
KF-10	9.4	12.7	12.2	30	12.7	40
KF-16	15.7	19.05	17.3	30	12.7	40
KF-25	22.1	25.4	26.2	40	12.7	40
KF-40	33.8	38.1	41.1	55	19.1	40
KF-50	46.5	50.8	52.3	75	19.1	40

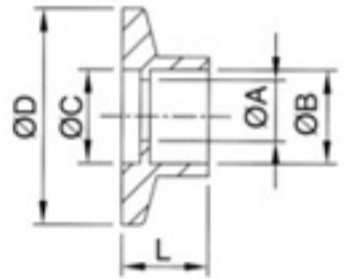
盲法兰
Blank Flange



Blank Flange

SIZE	ΦC	ΦD	L
KF-10	12.2	30	5.1
KF-16	17.3	30	5.1
KF-25	26.2	40	5.1
KF-40	41.1	55	5.1
KF-50	52.3	75	5.1

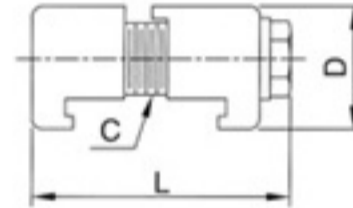
承插焊法兰
Socket Weld Flange



Socket Weld Flange

SIZE	ΦA	ΦB	ΦC	ΦD	L
KF-10	9.4	13.0	12.2	30.0	12.7
KF-16	15.7	19.3	17.3	30.0	12.7
KF-25	22.1	25.7	26.2	40.0	12.7
KF-40	34.8	38.4	41.1	55.0	12.7
KF-50	47.5	51.1	52.3	75.0	12.7

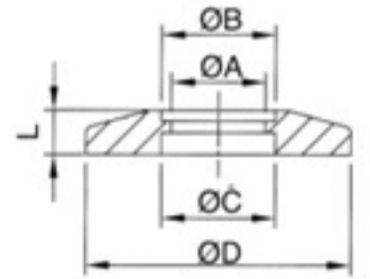
ISO-双爪卡箍
ISO-Double Claw Clamp



Double Claw Clamp

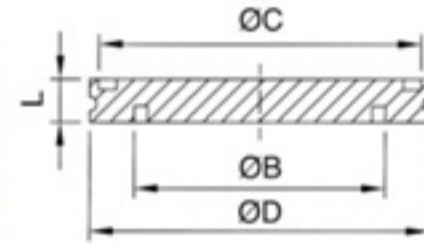
SIZE	C	D	L
ISO-63	M8	24.1	50.3
ISO-80	M8	24.1	50.3
ISO-100	M8	24.1	50.3
ISO-160	M10	27.9	52.1

快装盲板
Bored Flange



SIZE	ΦA	ΦB	ΦC	ΦD	L
KF-10	11.17	12.95	12.2	30	5
KF-16	17.27	19.3	17.3	30	5
KF-25	22.6	25.9	26.2	40	5
KF-40	35.3	38.6	41.1	55	5
KF-50	48	51.3	52.3	75	5

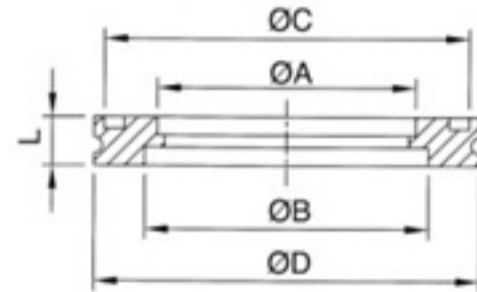
ISO-盲法兰
ISO-Blank Flange



Blank Flange

SIZE	ΦB	ΦC	ΦD	L
ISO-63	70	90	95	12
ISO-80	83	105	110	12
ISO-100	102	125	130	12
ISO-160	153	175	180	12

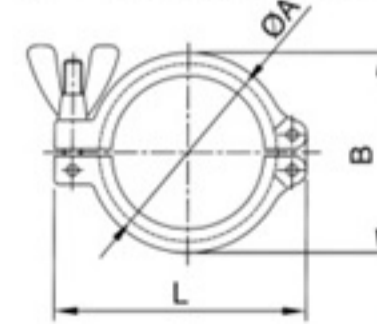
承插法兰
ISO Bored Flange



Weld Flange

SIZE	ΦA	ΦB	ΦC	ΦD	L
ISO-63	63.7	70	90	95	12
ISO-80	76.4	83	105	110	12
ISO-100	101.8	102	125	130	12
ISO-160	152.9	153	175	180	12

KF-卡箍-铝制
KF-Clamp-Aluminum



SIZE	ΦA	ΦB	L
10/16	35	45	62
20/25	45	55	73
32/40	60	70	86.1
50	80	96	123

常用不锈钢管化学成份及机械性能 (对照表)
Chemical composition and mechanical Properties of general stainless steel

机械性能(Mechanical Properties)	化学成份 (%) (Chemical Composition)										
	C	Si	P	S	Ni	Cr	Mo	其它	6b (Mpa)	6s (Mpa)	硬度 HB
1Cr18Ni9	0.04-0.1	≤1.00	≤0.035	≤0.030	8.00-11.00	8.00-20.00	-	-	≤520	≤205	≤35
0Cr18Ni9Ti	≤0.08	≤1.00	≤0.035	≤0.030	8.00-11.00	17.00-19.00	-	Ti≤0.12% (C=0.02-0.08)	≤539	≤196	≤40
1Cr18Ni9Ti	≤0.08	≤1.00	≤0.035	≤0.030	8.00-11.00	17.00-19.00	-	Ti≤0.15xC%-0.7	≤539	≤196	≤40
00Cr18Ni10	≤0.030	≤1.00	≤0.035	≤0.030	8.00-11.00	16.00-19.00	-	-	≤480	≤176	≤40
00Cr18Ni12Mo2T	≤0.08	≤1.00	≤0.035	≤0.030	11.00-14.00	16.00-18.00	1.80-2.50	0.30-0.60	≤539	≤216	≤40
00Cr17Ni14Mo2T	≤0.03	≤1.00	≤0.035	≤0.030	12.00-16.00	12.00-16.00	0.0-18.00	-	≤480	≤176	≤40
WP304	0.08-0.15	0.75-1.00	0.040	0.030	8.00-11.00	18.00-20.00	-	-	517	207	35
WP304H	0.04-0.1	0.75-1.00	0.040	0.030	8.00-11.00	18.00-20.00	-	-	517	207	35
WP304L	0.035	0.75	0.040	0.030	8.00-13.00	18.00-20.00	-	-	448	172	35
WP316	0.08	0.75-1.00	0.040	0.030	11.00-14.00	16.00-18.00	2.00-3.00	-	517	207	35
WP316H	0.04-0.1	0.75-1.00	0.040	0.030	11.00-14.00	16.00-18.00	2.00-3.00	-	517	207	35
WP316L	0.035	0.75-1.00	0.040	0.030	10.00-15.00	16.00-18.00	2.00-3.00	-	483	172	35
Wp316	0.08	0.75-1.00	0.040	0.030	9.00-13.00	17.00-20.00	-	Ti≤0.5xC%-0.60	517	207	35
SUS304TP	≤0.08	≤1.00	≤0.040	≤0.030	8.00-11.00	18.00-20.00	-	-	519	206	35
SUS304HTP	0.04-0.10	≤0.75	≤0.040	≤0.030	8.00-11.00	18.00-20.00	-	-	519	206	35
SUS304LP	≤0.030	≤1.00	≤0.040	≤0.030	9.00-13.00	18.00-20.00	-	-	480	176	35
SUS316TP	≤0.08	≤1.00	≤0.040	≤0.030	10.00-14.00	16.00-18.00	2.00-3.00	-	519	206	35
SUS316HTP	0.04-0.10	≤0.75	≤0.040	≤0.030	11.00-14.00	16.00-18.00	2.00-3.00	-	519	206	35
SUS316LP	≤0.030	≤1.00	≤0.040	≤0.030	12.00-16.00	16.00-18.00	2.00-3.00	-	480	176	35
SUS321TP	≤0.08	≤1.00	≤0.040	≤0.030	9.00-13.00	17.00-19.00	-	Ti>5xC%-0.70	519	206	35
SUS321HTP	0.04-0.10	≤0.75	≤0.030	≤0.030	9.00-13.00	17.00-20.00	-	Ti>4xC%-0.60	519	206	35
SUS309STP	≤0.15	≤1.00	≤0.040	≤0.030	12.00-15.00	22.00-24.00	-	-	519	206	35
SUS310STP	≤0.15	≤1.50	≤0.040	≤0.030	19.00-22.00	24.00-26.00	-	-	519	206	35
SUS347TP	≤0.18	≤1.00	≤0.040	≤0.030	9.00-13.00	17.00-19.00	-	Nb+Ta≥10xC%	519	206	35

中国 china	日本 Japn JIS	国际标准 International Standards ISO9313 ISO683/13	美国 USA ANSI ASTM	美国 Bs970part4 Bs1449part2	德国 Germany DIN17440	法国 NFA35-572 NFA35-576-582 NFA35-584
0Cr19Ni9	SUS304	11	304 S30400	304S15	X5CrNi189	Z6CNT18.09
00Cr19Ni11	SUS304L	10	304L S30403	304S12	X2CrNi189	Z2CN18.09
00Cr17Ni12Mo2	SUS316	20.02a	316 S31600	304S16	X5CrNiMo1810	Z6CND17.12
00Cr17Ni14Mo2	SUS316L	19.19a	316L S31603	304S12	X2CrNiMo189	Z6CNT17.12
0Cr18Ni10Ti	SUS321	15	312 S32100	321S12-32S20	X10CrNi189	Z6CNT18.10
00Cr17Ni14Mo2Ti	SUS316Ti	-	316Ti	-	X6CrNiMoTi17122	-

各国不锈钢
标准牌对照表
STAINLESS STEEL
STANDARDS OF
DIFFERENT COUNTRIES