



SLIM+
STABILIZE YOUR VIDEOS

**Color Focus Smartphone
Gimbal Stabilizer**

Colorful live

Black Version : Full black

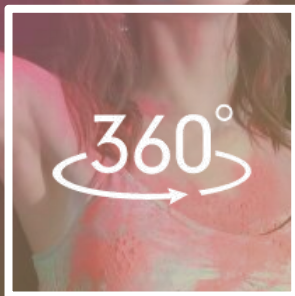
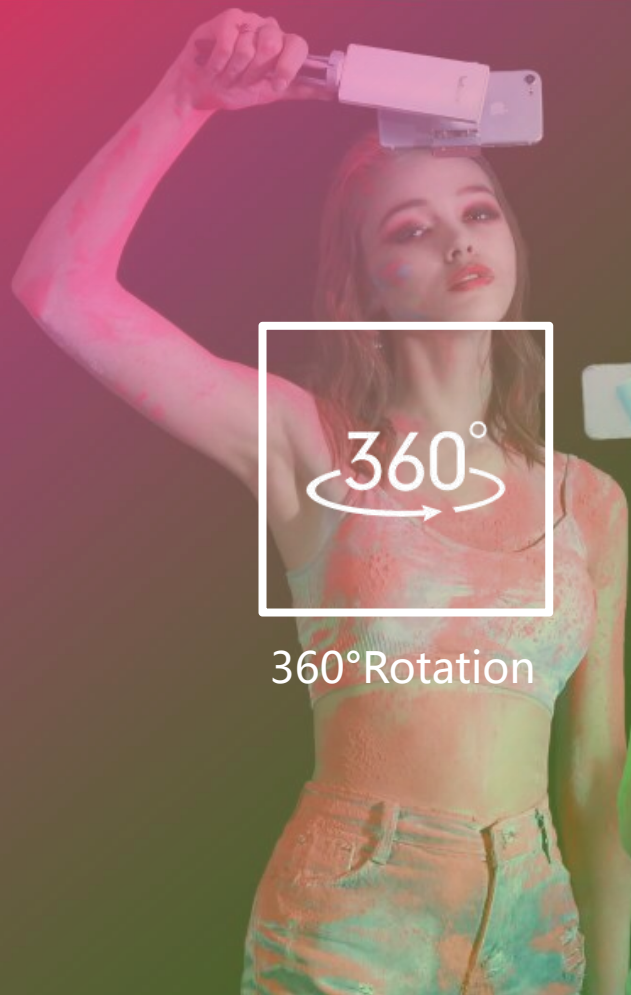
Colorful Version : White body+ Green , Pink, Blue





Slim • Stable

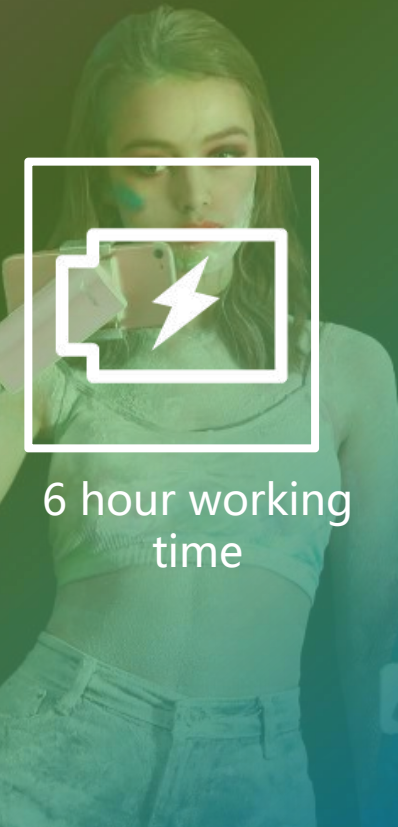
- Only 176g, easy to carry,
- You can take it anywhere anytime, just put it into your pocket.
- Help you make a better shooting in your web live or travelling.



360°Rotation



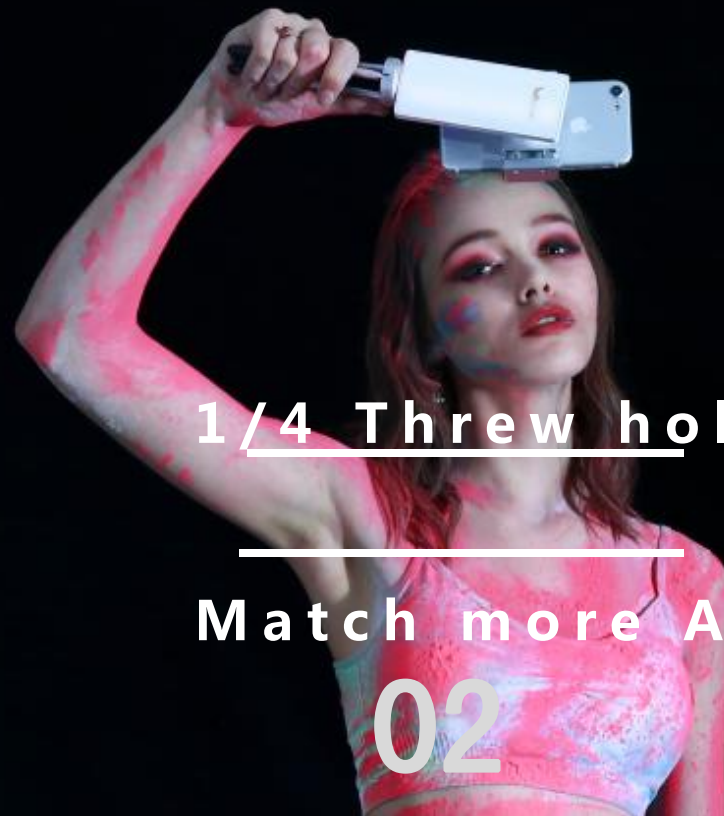
AI Stabilized



6 hour working time



Horizontal & Vertical shooting



1/4 Thread hole

Match more Accessories

01

02

03

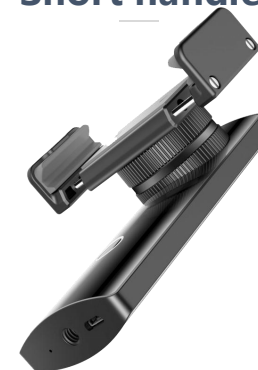
Mini Tripod



Selfie stick



Short handle

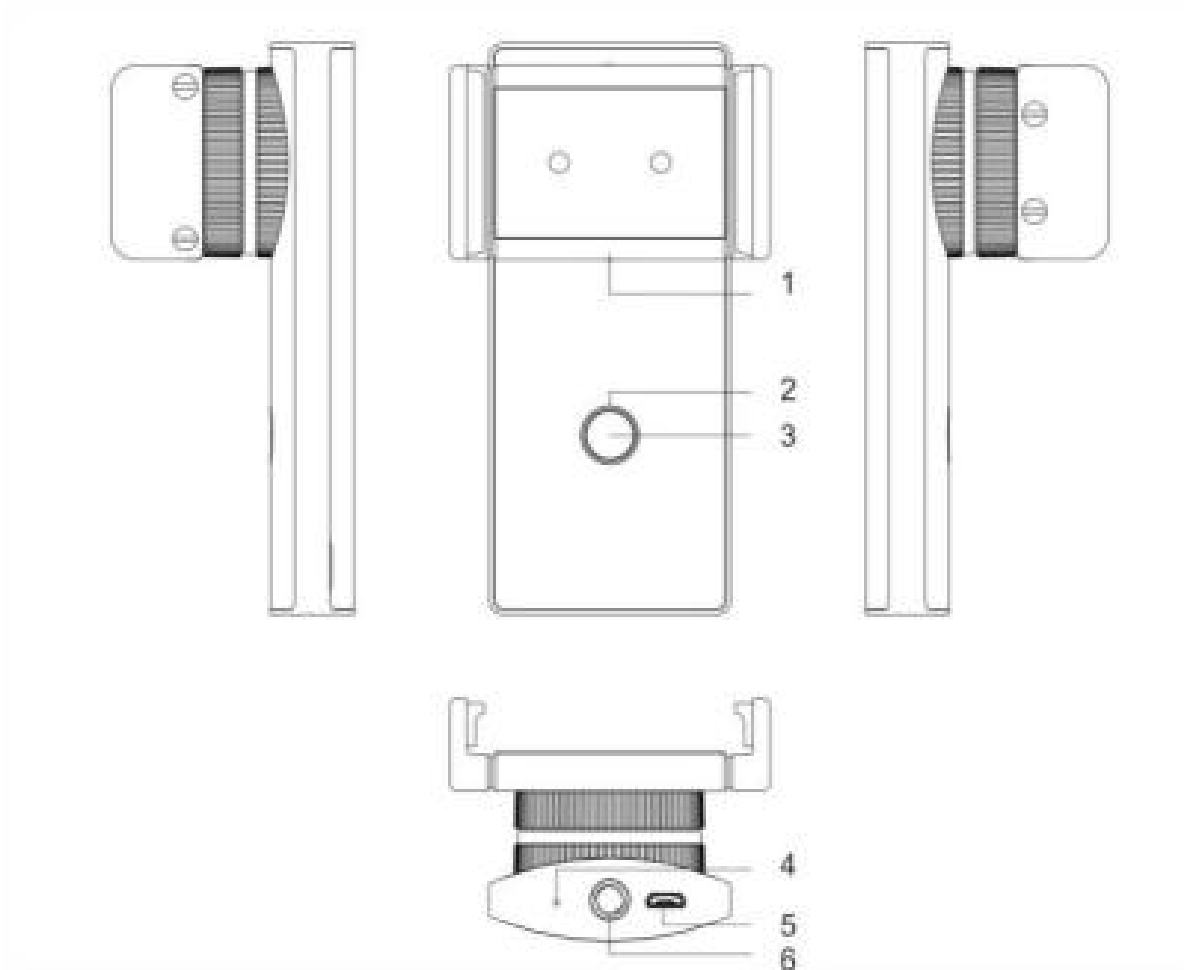




Colorful Version Packing

Black Version Packing

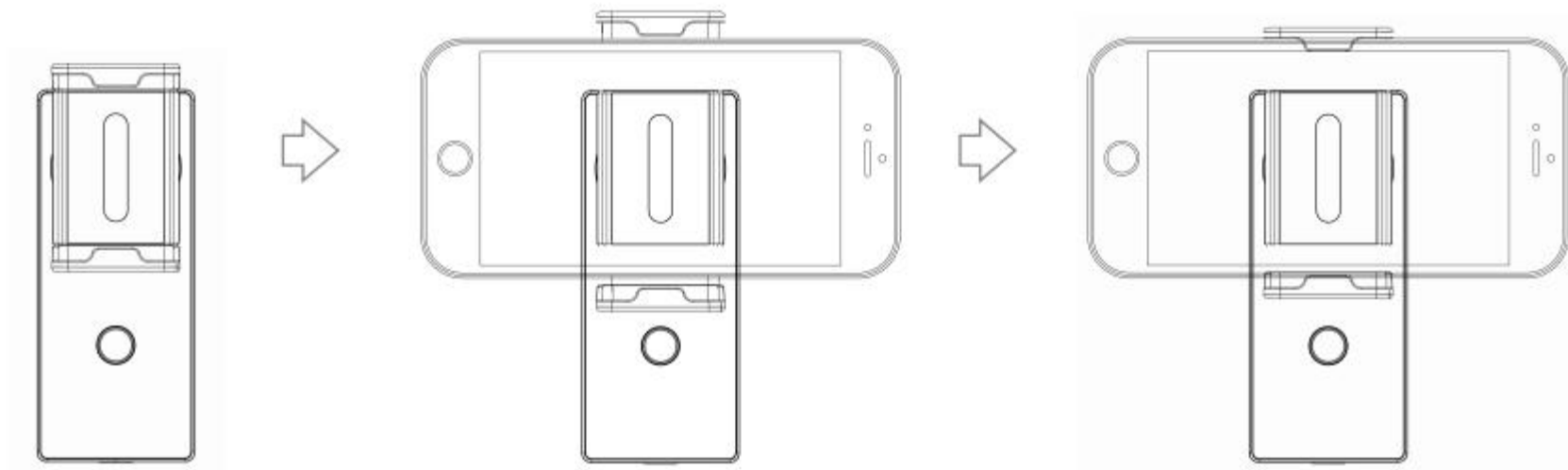




Function

- 1 Phone Clamp
- 2 Power Indicator
- 3 Power on/off Button
- 4 Reset Button
- 5 Charging/Upgrade
- 6 ¼ threw hole

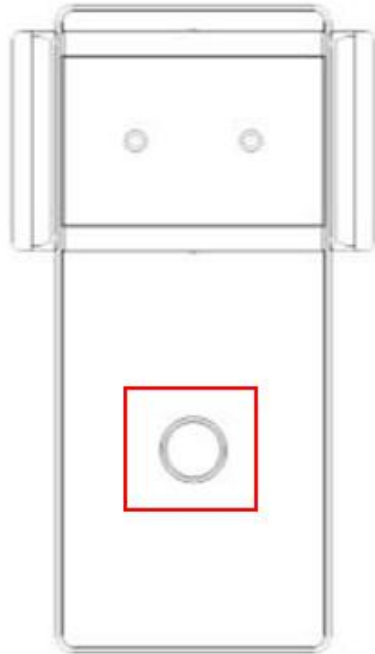
Operation



1. Open clamp

2. Insert your phone on the clamp, gently press your phone

3. Long press power on to start use



Quickly and continuously press the button 5 times, it will enter into calibration mode

Level Calibration

- I. No-load condition (without phone)
- II. Hold it in vertically position (see left photo)
- III. Quickly and continuously press power on button 5 times, the red and green indicator lights flashed in turn
- IV. Product start to auto-calibration, this will last about 30s
- V. Please hold it in vertically position, DO NOT power off during calibration.

Parameter



Item	Specification
Battery	Lithium 1000mAh
Battery Life	Quiescent condition ≥ 12 hrs ;
	Normally more than 6 hrs
Battery Charging	Charging Voltage 4.5V ~ 5.5V (DC)
	Max Charging 1A
Working Voltage	Lithium 3.3V ~ 4.2V
Working Current	$\leq 100\text{mA}$ (AVG)(Quiescent condition)
	$\leq 1\text{A}$ (motion state)
Power off Current	$\leq 150\mu\text{A}$
Working Temperature	$-10^{\circ}\text{C} \sim +40^{\circ}\text{C}$
IP	IP54
Pitch Axis	$-75^{\circ} \sim +75^{\circ}$
Support Phone	Support weight $< 85\text{mm}$; Weight $< 280\text{g}$ (phone in middle)
Whole Size	119 \times 66 \times 45mm (Auto clamp)
	119 \times 80 \times 53(Regular clamp)
Weight	176g (auto clamp) /180g (regular clamp)

A woman with long brown hair, wearing a white crop top and light-colored pants, has colorful paint splatters on her face and arms. She is holding three Wewow blenders: a green one in her right hand and two pink ones in her left hand. A white mouse cursor icon is positioned over the center of the image.

CONTACT US

Helsa@wewowgimbal.com