

HSF



ROHS

SPECIFICATIONS

- Voltage rating: 125V AC,DC
- Current rating: 3A AC,DC
- Withstanding Voltage: 500V AC/minute
- Insulation resistance:1000MΩ min
- Contact resistance:≤10mΩ
- After environmental testing:≤20mΩ
- Temperature range: -40℃~+105℃

WAFER

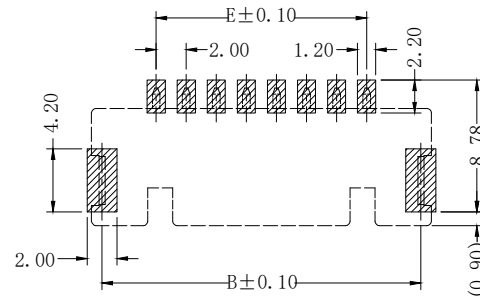
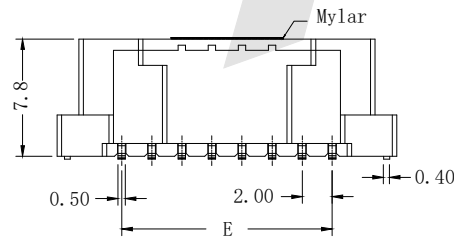
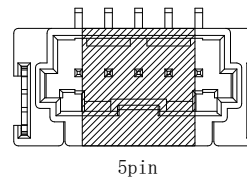
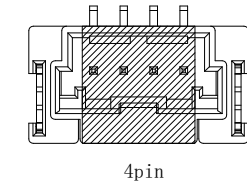
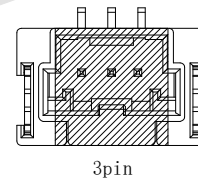
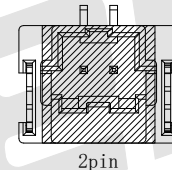
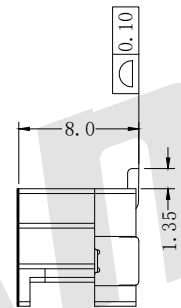
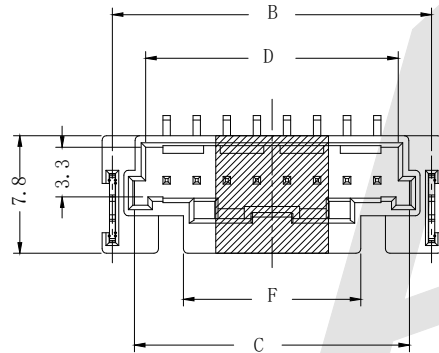
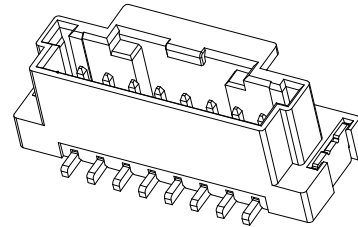
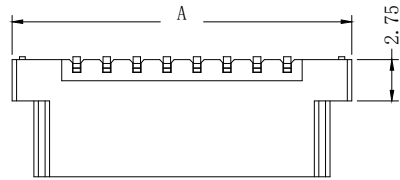
- Part NO: AW2013V-M-X-XP
① ② ③ ④
- Material: Pin: Brass/Tin over Nickel
Insulator: PA9T, UL94V-0
⚠

- Mates With: AH2013 Series Housing

- ① V:180° ⚠
- ② M:SMT
- ③ Color: B:Black R:Red E:Beige
- ④ Pole:02
03
...
15

Ordering Information & Dimensions:

Poles	Dimensions (mm)					
	A	B	C	D	E	F
02	10.60	9.23	6.30	4.80	2.00	6.30
03	12.60	11.23	8.30	6.80	4.00	5.80
04	14.60	13.23	10.30	8.80	6.00	7.80
05	16.60	15.23	12.30	10.80	8.00	9.80
06	18.60	17.23	14.30	12.80	10.00	11.80
07	20.60	19.23	16.30	14.80	12.00	11.80
08	22.60	21.23	18.30	16.80	14.00	11.80
09	24.60	23.23	20.30	18.80	16.00	11.80
10	26.60	25.23	22.30	20.80	18.00	11.80
11	28.60	27.23	24.30	22.80	20.00	11.80
12	30.60	29.23	26.30	24.80	22.00	11.80
13	32.60	31.23	28.30	26.80	24.00	11.80
14	34.60	33.23	30.30	28.80	26.00	11.80
15	36.60	35.23	32.30	30.80	28.00	11.80



RECOMMENDED P.C.B LAYOUT
(TOLERANCE: ±0.05)

Unless Otherwise specified tolerance
X. ±0.35 X.XX:±0.20
X.X:±0.25 X.XXX:±0.15

SCALE: As Shown UNIT: mm
DRAW Wu Feng Rong DATE 24/02/2020
CHECK Bob Yang DATE 12/26/2017

Antenk ANTENK ELECTRONICS CO.,LTD
Http://www.antenk.com
E-mail:sales@antenk.com

TITLE:
2.00mm Pitch 180° SMT Wafer Connector Series

DRAWING NO: ⚠ AW2013V-M-X-XP
PRODUCT NO: ⚠ AW2013V-M-X-XP

REV	DESCRIPTION	DATE
⚠	CHANGE Nylon 66 TO PA9T	04/09/2024
⚠	CHANGE AW2013R-S-X-XP C TO AW2013V-M-X-XP	12/14/2020

