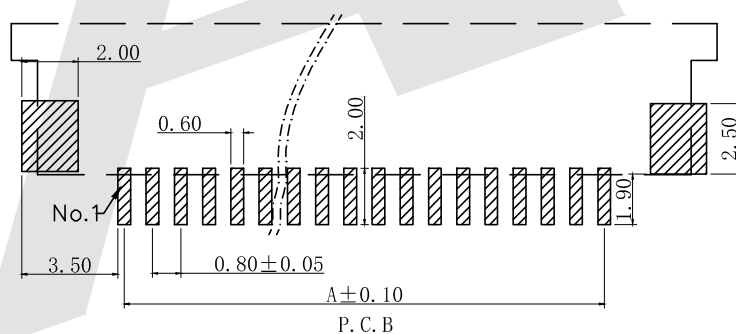
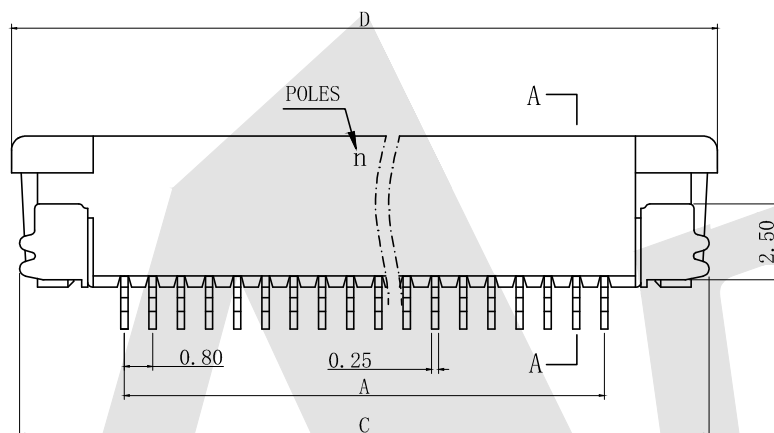
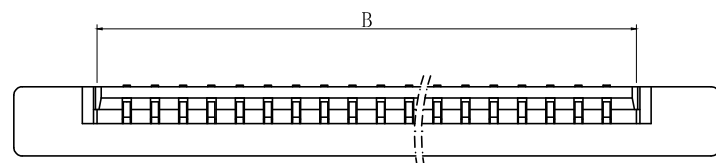


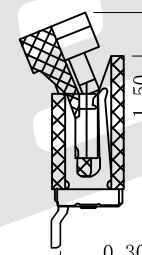
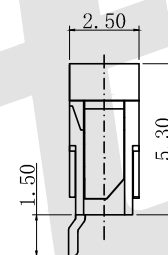
HSF



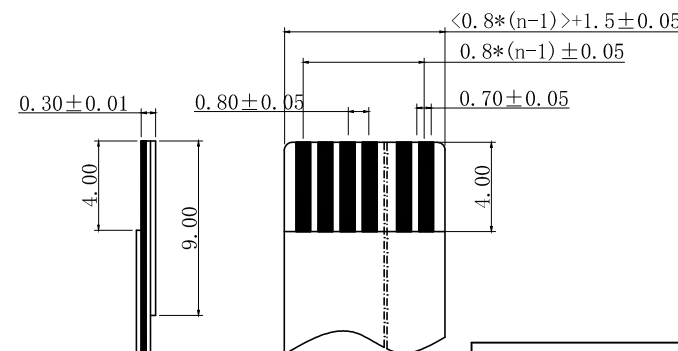
ROHS



孔位	A	B	C	D	孔位	A	B	C	D
4	2.4	4.0	9.6	10.3	20	15.2	16.8	22.4	23.1
5	3.2	4.8	10.4	11.1	21	16.0	17.6	23.2	23.9
6	4.0	5.6	11.2	11.9	22	16.8	18.4	24.0	24.7
7	4.8	6.4	12.0	12.7	23	17.6	19.2	24.8	25.5
8	5.6	7.2	12.8	13.5	24	18.4	20.0	25.6	26.3
9	6.4	8.0	13.3	14.3	25	19.2	20.8	26.4	27.1
10	7.2	8.8	14.4	15.1	26	20.0	21.6	27.2	27.9
11	8.0	9.6	15.2	15.9	27	20.8	22.4	28.0	28.7
12	8.2	10.4	16.0	16.7	28	21.6	23.2	28.8	29.5
13	9.6	11.2	16.8	17.5	29	22.4	24.0	29.6	30.3
14	10.4	12.0	17.6	18.3	30	23.2	24.8	30.4	31.1
15	11.2	12.8	18.4	19.1	31	24.0	25.6	31.2	31.9
16	12.0	13.6	19.2	19.9	32	24.8	26.4	32.0	32.7
17	12.8	14.4	20.0	20.7	33	25.6	27.1	32.8	33.5
18	13.6	15.2	20.8	21.5	34	26.4	28.0	33.6	34.3
19	14.4	16.0	21.6	22.3	35	27.2	28.8	34.4	35.1



A-A



SUITABLE CABLE

Unless Otherwise specified tolerance

X. ±0.35 X. XX: ±0.20  
X. X: ±0.25 X. XXX: ±0.15

SCALE: As Shown UNIT: mm

DRAW Jack Bao DATE 10/11/2018

CHECK BobYang DATE 10/11/2018

**Antenk** ANTENK ELECTRONICS CO., LTD  
Http://www.antenk.com  
E-mail:sales@antenk.comTITLE: 0.8mm FPC, H=2.5mm, SMT RIGHT ANGLE ZIF,  
Upper contact, With solder Pattern area

DRAWING NO: FPC0.8-XXRMUXX4

PRODUCT NO: FPC0.8-XXRMUXX4

Specifications:

Material And Finish:

Insulator: LCP

Lock: PPS

Insert Spring: Phosphor Bronze,  
Matte Tin PlatedSolder Platten Area: Phosphor  
Bronze, Matte Tin Plated

Electrical:

Voltage: 500 V AC(rms)/DC

Current: 0.5 A AC(rms)/DC

Contact Resistance: 20 mΩ

max(initial)

Insulation Resistance: 800 MΩ min

Operating Temp: -20°~+85°

Ordering Code:

FPC0.8 - XX - RM - U - X - X - 4  
① ② ③ ④ ⑤ ⑥ ⑦① 0.8mm FPC Series ④ Contact type:  
U: UP side contact

② Contact NO:

XX=XXpin

For example:

24=24pin

⑤ Packing Type:

T: Tube packing

A: tray packing

R: tape &amp; reel

③ APPEARANCE:

RM: SMT Right Angle

RT: DIP Right Angle

SM: SMT Straight

ST: DIP Straight

⑥ Plating:

G0: Gold flash

G1: 3U" gold

SN: MATT-TIN90-120U"

SO: SELECTIVE GOLD

S1: SELECTIVE GOLD 3U"

⑦ Series number

4

REV

DESCRIPTION

DATE

1

2

3

4

5

6

7

8