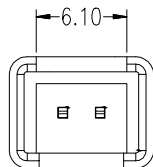
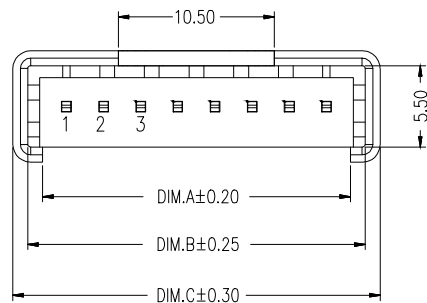
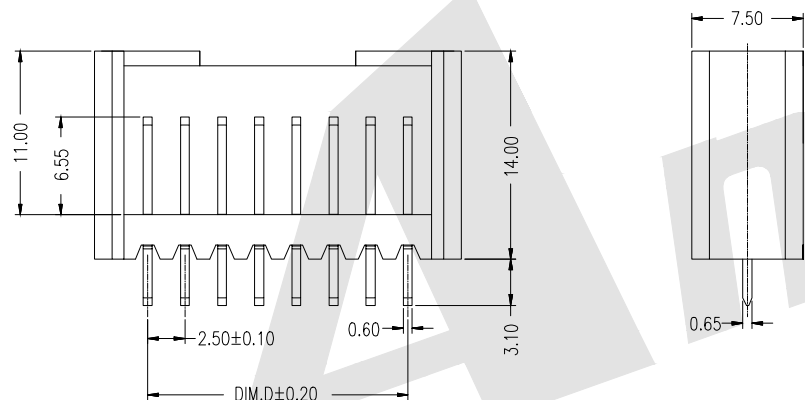
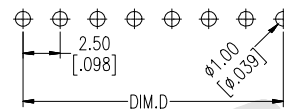


HSF



2P示意图

Recommended P.C.B Layout (Top Side)
(PCB BOARD TOLERANCE±0.05)



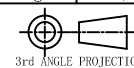
SPECIFICATION:

- 1.Current Rating : 5.0A AC/DC
- 2.Voltage Rating: 125V AC/DC
- 3.Contact Resistance: 10mΩ Max
- 4.Insulation Resitance: 1000MΩ min
- 5.Withstanding Voltage: 1500V AC/Minute
- 6.Temperature Range: -40℃ ~ +105℃
- 7.Metarial:PBT+30%GF UL94V-0
Brass with Matte Sn over Ni
- 8.Mate with : IDC2501 Series

PIN	DIM.A	DIM.B	DIM.C	DIM.D
2P	5.70	7.70	9.70	2.50
3P	8.20	10.20	12.20	5.00
4P	10.70	12.70	14.70	7.50
5P	13.20	15.20	17.20	10.00
6P	15.70	17.70	19.70	12.50
7P	18.20	20.20	22.20	15.00
8P	20.70	22.70	24.70	17.50
9P	23.20	25.20	27.20	20.00
10P	25.70	27.70	29.70	22.50
11P	28.20	30.20	32.20	25.00
12P	30.70	32.70	34.70	27.50
13P	33.20	35.20	37.20	30.00
14P	35.70	37.70	39.70	32.50
15P	38.20	40.20	42.20	35.00
16P	40.70	42.70	44.70	37.50
17P	43.20	45.20	47.20	40.00
18P	45.70	47.70	49.70	42.50
19P	48.20	50.20	52.20	45.00
20P	50.70	52.70	54.70	47.50

Unless Otherwise specified tolerance
X. ±0.35 X.XX: ±0.20
X.X: ±0.25 X.XXX: ±0.15

SCALE: As Shown UNIT: mm
DRAW Jack Bao DATE 10/09/2017
CHECK Bob Yang DATE 10/09/2017



Antenk ANTENK ELECTRONICS CO., LTD
Http://www.antenk.com
E-mail:sales@antenk.com

TITLE: 2.50mm pitch IDC 180° Wafer TYPE Connector Series

DRAWING NO: AW2501V-xxP-G

PRODUCT NO: AW2501V-xxP-G

REV	DESCRIPTION	DATE