

Double throttle/check valve type Z2FS

Sizes 6 16 22

up to 31.5MPa

up to 360 L/min

Feature:

- Limiting of main or pilot flow with two service ports
- Sandwich plate design
- Meter-in meter-out control

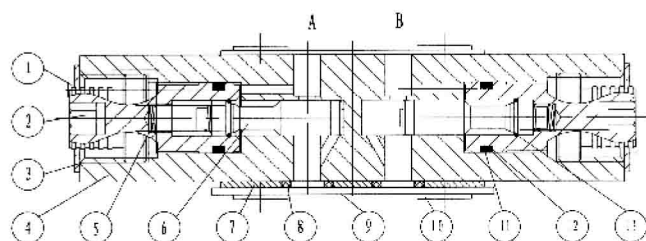


Functional description, section

Valves type Z2FS are double throttle/check valves in sandwich plate design. They are used to limit main or pilot oil flow at one or two service ports. Two symmetrically arranged throttle/check valves limit flow (by means of adjustable throttle spools) in one direction and permit free return flow in the other direction.

Main flow limiting: fitted between the directional valve and the subplate.

Pilot flow limiting: fitted between the main valve and the pilot valve.



double throttle/check valves, Type Z2FS6

- | | |
|---------------------------------------------------------|-------------------------|
| 1.Name plate screw | 9.Dustproof board |
| 2.Setting screw for alteration
of flow cross section | 10.Lock bolt |
| 3.Name plate | 11.O-ring |
| 4.valve housing | 12.Teflon clip ring |
| 5.Pressure Spring | 13.steel wire clip ring |
| 6.spool valve | |
| 7.O-ring plate | |
| 8.O-ring | |

Ordering details

Z2FS		-30 /		*	
double throttle/check valves		Further details in clear text			
Nominal size 6 =6 Nominal size 16 =16 Nominal size 22 =22		No code= Mineral oil V = Phosphate ester			
Series30 (30 to 39:unchanged installation and connection dimensions) =30		S= Meter-in S2 = Meter-out S3 = Meter-out on port A, Meter-in on port B S4 = Meter-in on port A, Meter-out on port B			

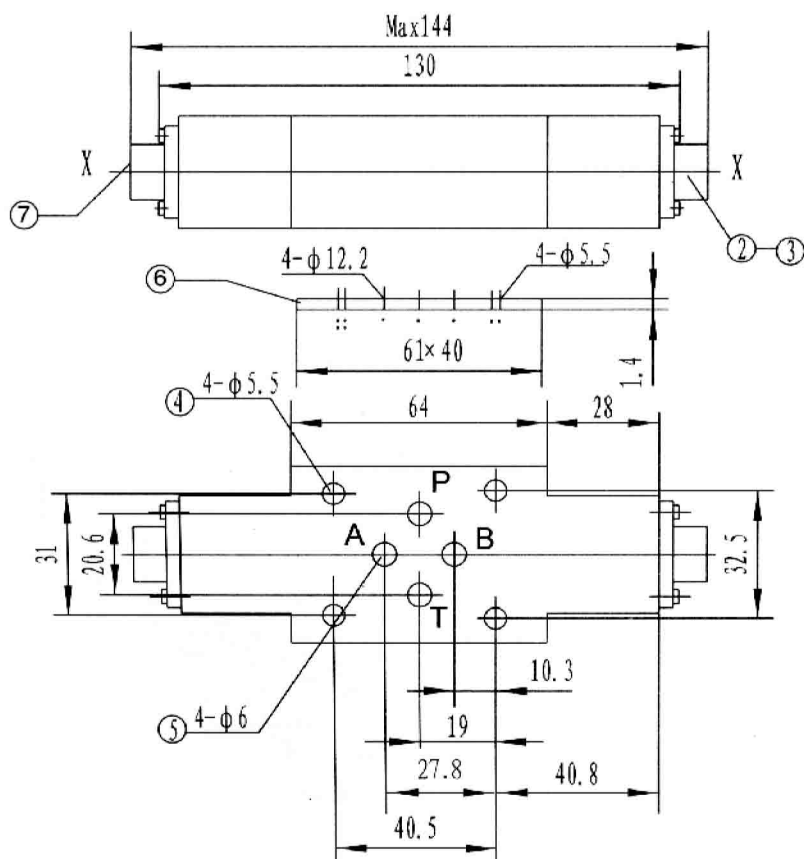
Technical data

Size		6	16	22
Maximum flow	L/min	80	250	360
operated pressure	MPa	31.5	35	
Pressure fluid		Mineral oil or Phospate ester		
Viscosity range	mm²/s	10~800		
Temperature range	℃	-30~+80		

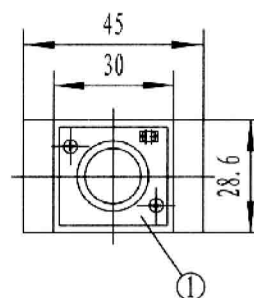
Unit Dimensions

Dimensions in mm

Type Z2FS6:

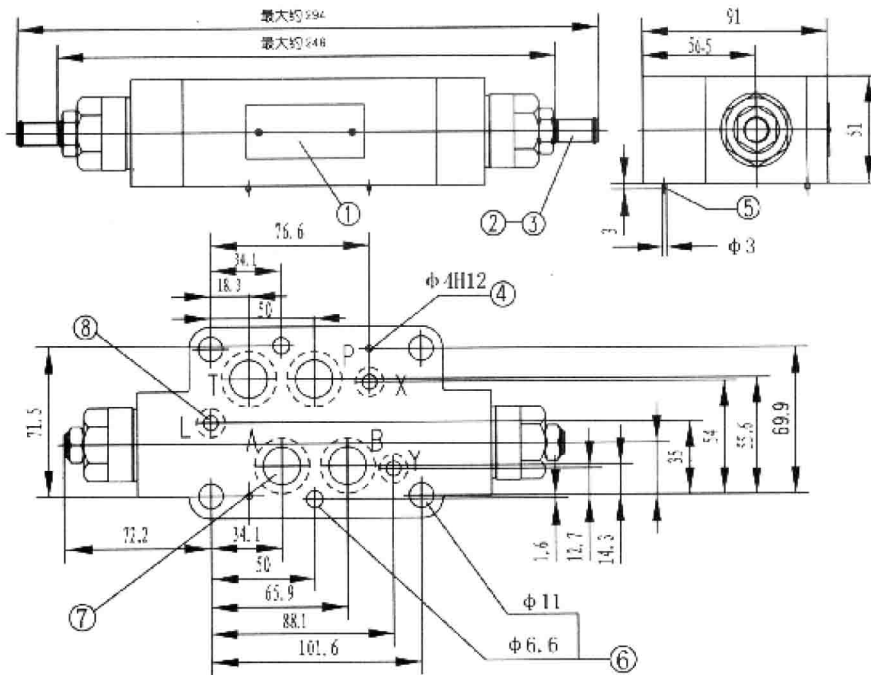


Dimension of ports connective flate is the same as type:WE6

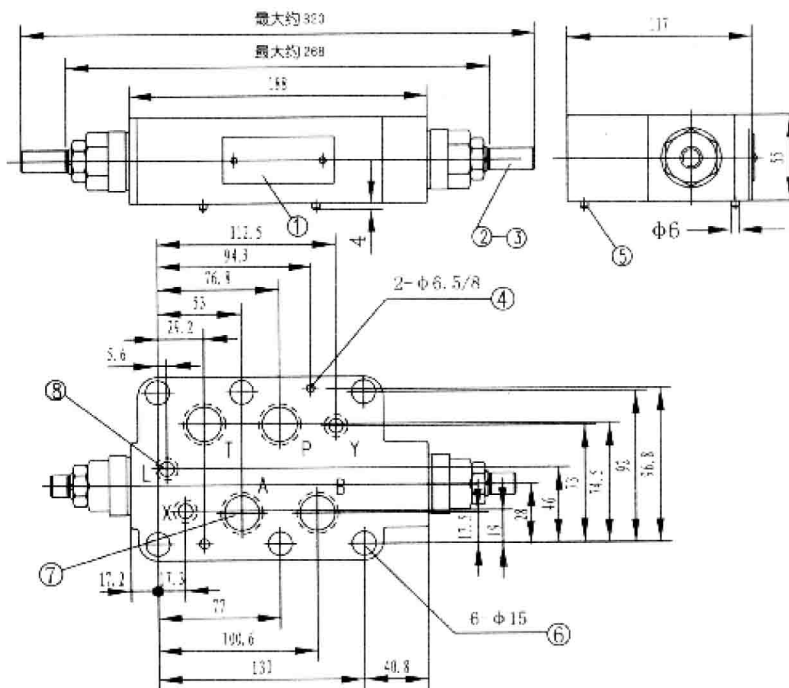


1. Name plate
2. Setting screw for alteration of flow cross section
3. Turn anti-clockwise=increases flow
Turn clockwise=decreases flow
4. Valves fixing holes
5. Ports A, B, P, T
6. O-ring plate
7. To change from meter-in to meter-out, rotate the unit about the "X" - "X" axis

Type Z2FS16



Type Z2FS22



1. Name plate
2. Setting screw for alteration of flow cross section
3. turn anti-clockwise=increases flow
turn clockwise=decreases flow
4. 2 locating pins holes
5. 2 locating pins
6. 6 valves fixing holes
7. O-ring for port A B P T
8. O-ring for port X Y L

Double throttle/check valve type Z2FS

Sizes 10

up to 31.5MPa

up to 160L/min



Feature:

- Limiting of main or pilot flow with two service ports
- Sandwich plate design
- Meter or meter-out control.

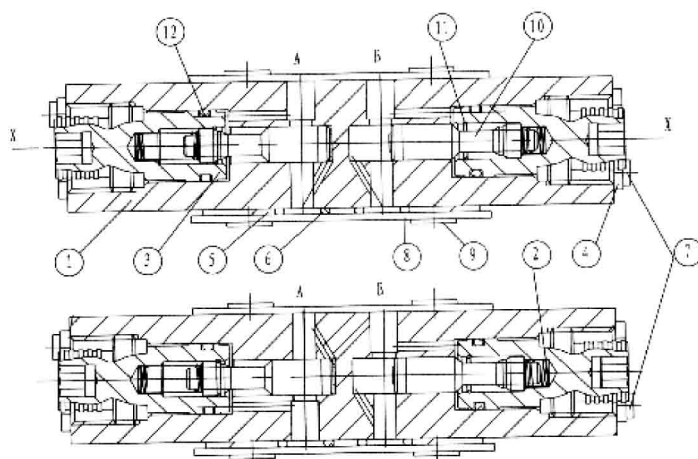


Functional description, section

Valves type Z2FS. are double throttle/check valves in sandwich plate design. They are used to limit main or pilot oil flow at one or two service ports. Two symmetrically arranged throttle/check valves limit flow (by means of adjustable throttle spools) in one direction and permit free return flow in the other direction.

Main flow limiting: fitted between the directional valve and the subplate.

Pilot flow limiting: fitted between the main valve and the pilot valve.



- 1.Name plate screw Valve housing
- 2.Spring
- 3.Setting screw for alteration of flow cross section
- 4.Name plate
- 5.O-ring plate
- 6.O-ring
- 7.Name plate screw
- 8Board
- 9.Palstic stopper
- 10.Spool valve
- 11.Spring clamp
- 12O-ring.

Ordering code

Z2FS

- 20 /

Double throttle/check valve

Further details in clear text

Nominal size 10

=10

No code=
V=

Mineral oil
Phosphate ester

Series 20(20 to 30: unchanged installation and connection dimensions)

=20

S= Meter-in
82= Meter-out
S3= Meter-out on port A, Meter-in on port B
S4= Meter-in on port A, Meter-out on port B

