

Check valve sandwich plate type Z1S...30B

Sizes 6 30

up to 31.5MPa

up to 100 L/min

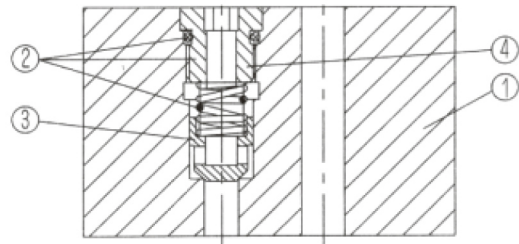
Features:

- Sandwich plate valve
- For use in vertical stacking assemblies



Functional description, section

The Z1S 6 valve is a direct operated check valve in sandwich plate design. It is used for the leak-free closure in one direction and allow free-flow in the counter direction. This valve type has a metallic seal between poppet (3) and housing (1).



Ordering details

Z1S

– 30 /

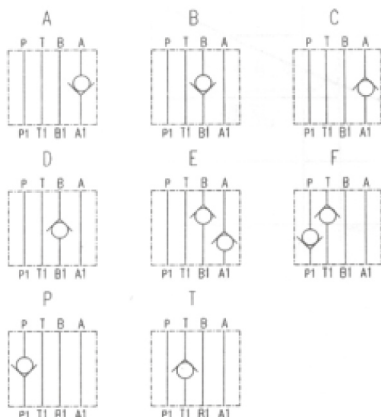
Size 6 = 6
Size 10 = 10

Further details in clear text

No code = Mineral oil
V = Phosphate ester

30 = Series 30
(30 to 39: unchanged installation and connection dimensions)

1 = Cracking pressure 0.05MPa
2 = Cracking pressure 0.3MPa
3 = Cracking pressure 0.5MPa



Technical data

Size		6	10
Max. flow	L/min	to 40	to 100
Max. operating pressure	MPa	to 31.5	
Cracking pressure	MPa	See the ordering details	
Pressure fluid		Mineral oil or Phosphate ester	
Pressure fluid temperature range	°C	-30~+80	
viscosity range	mm ² /s	2.8~500	
weight	kg	0.8	2.3

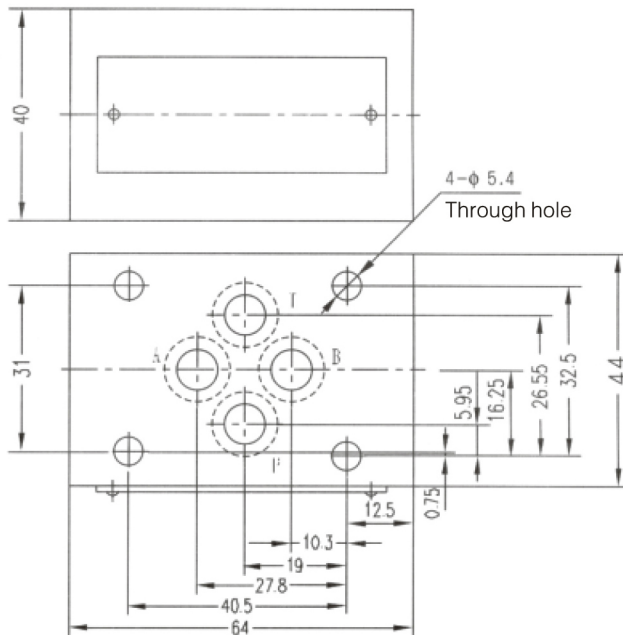
*For application outside these parameter, please consult us!

Unit dimensions

Dimensions in mm

Size 06

O-ring 4-9.25X1.78

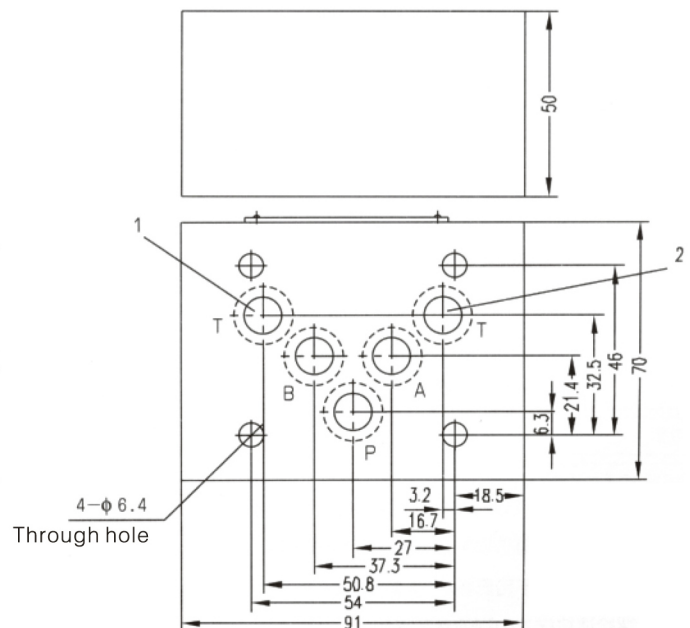


Size 10

O-ring 5-12X2

1、This port is blocked in ver style “F” and “T” .

2、In style “F” and “T” the check valve is installed in this channel.



Required surface finish
of mating piece

