

160 HP

SD16TF

King of the Woods

- ▶ Engine model: Shangchai SC11CB184G2B1
- ▶ Net power: 120 kW/160HP/1850 rpm
- ▶ Operating weight: 17.5 t

Product features

The SD16TF forest bulldozer has been developed for operation in forests. The SD16TF is equipped with a machinery drive system, a front-extending ROPS canopy, and an advanced structure, providing reliable performance and convenient and flexible operation, and easily adapting it to operations in the forest.



shantui e-shop

SHANTUI

VALUE THAT WORKS

Shantui Construction Machinery Co., Ltd.

ADDRESS:

No. 58, G327 Highway
Jining City, Shandong, CHINA

TEL: +86-537-2909369

FAX: +86-537-2311219







EMAIL: trade@shantui.com

160 HP

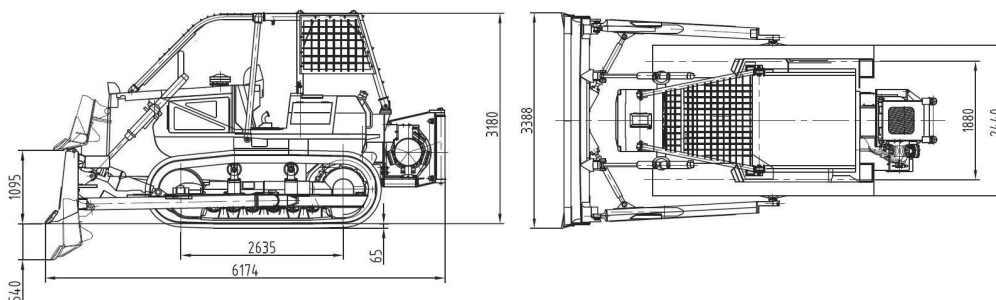
SD16TF

Technical specifications:

Blade Type	Angle Blade
Min. ground clearance:	400 mm
Ground pressure:	0.059 MPa
Minimum turning radius:	4.571 m
Gradeability:	30°
Track gauge:	1880 mm

	ENGINE	Model & type	Shanghai SC11CB184G2B1; water-cooled, in-line, 4-stroke direct injection				
		Horsepower	Gross power: 131/175/1850 kW/HP/rpm // Net power: 120/160/1850 kW/HP/rpm				
		Number of cylinders	6-126 x 130 mm (bore x stroke)				
		Piston displacement	10.5L				
		Min. fuel consumption	235 g/kW-h				
		Maximum torque	764 N-m@1300 rpm				
	POWER TRANSMISSION SYSTEM	Main Clutch	Wet, multi-disc, manual gear shift, hydraulic booster				
		Transmission	Forced lubrication, manual gear shift				
		Main drive	Spiral bevel gear, single-stage speed reduction, splash lubrication				
		Steering clutch	Wet, multi-disc, spring loaded, hand hydraulically separated, inter-linking with steering brake				
		Steering brake	Wet, floating band structure, foot brake with hydraulic booster				
		Final drive	2-stage speed reduction of spur gear, splash lubrication				
	TRAVEL SPEED	Gear	1st	2nd	3rd	4th	5th
		Forward	0~2.67 km/h	0~3.76 km/h	0~5.41 km/h	0~7.62 km/h	0~11.13 km/h
		Reverse	0~3.48 km/h	0~4.90 km/h	0~7.05 km/h	0~9.92 km/h	-
	UNDERCARRIAGE SYSTEM	Type	Sprayed beam, suspended structure of equalizer				
		Carrier rollers	2 each side				
		Track rollers	7 each side				
		Track type	Assembled, single-grouser				
		Width of track shoes	560 mm				
		Pitch	203.2 mm				
	BLADE	Blade type	Angle Blade/ Straight tilt blade				
		Dozing capacity	4.3/ 4.5 m³				
		Efficiency (Theoretical value 40 m)	225 m³/h				
		Blade width	3790/ 3388 mm				
		Blade height	1040/ 1149 mm				
		Maximum drop below ground	530/ 540 mm				
		Maximum lifting height	1110/ 1095 mm				
		Maximum turning angle	25°				
	WINCH (OPTIONAL)	Model	ALLIED W6F				
		Maximum tension(Bare drum / Full drum)	38960 kg / 21430 kg				
		The speed of the rope (m/s)/ rated Loading(kg)(Bare drum / Full drum)	0.325 /18140 ;0.28/18140				
		Weight	1361 kg				
		Overall dimension (l x w x h)	1549 × 1041 × 1016 mm				
		Barrel dimension	254 mm				
		Wire Rope Diameter	83 mm				

OVERALL DIMENSIONS Straight-tilt blade



► THE SPECIFICATIONS ARE SUBJECT TO CHANGE WITHOUT NOTICE. THE PICTURES MAY INCLUDE OPTIONS. THE ACTUAL COLOR & APPEARANCE OF THE PRODUCT MAY DIFFER FROM WHAT IS SHOWN.