

**Technical Specification and Drawing**  
**4000KVA-11/6.6KV**  
**POWER TRANSFORMER**  
**No.2014015**

**JIANGSHAN SCOTECH ELECTRICAL CO., LTD**

Add: No.8 Xinggong 1<sup>st</sup> Road, Jiangshan, Zhejiang, China

Name: Scott Lee

Tel: +86 13857027511

E-Mail: [info@scotech.com](mailto:info@scotech.com)

Skype: [dragonelectric123](https://www.skype.com/user/dragonelectric123)

Web: [www.scotech.com](http://www.scotech.com)



# JIANGSHAN SCOTECH ELECTRICAL CO.,LTD

## Technical Data Sheet

No.	Basic information	Unit	Guaranteed
1	Manufacturer		Jiangshan Scottech Electrical Co.,Ltd
2	Standard		IEC60076
3	Type		Oil immersed power transformer
4	Installation		Outdoor
5	Altitude	M	≤1000
6	Rated power	KVA	4000
7	Primary voltage	KV	11
8	Secondary voltage	KV	6.6
9	Vector group		Dyn11
10	Rated Frequency	HZ	50
11	Cooling		ONAN
12	Number of windings		2
13	Number of phases		3
14	Type of tap Changer		NLTC
15	Tapping range		±2*2.5% @primary side

**JIANGSHAN SCOTECH ELECTRICAL CO.,LTD**

16	Impedance	%	5.5
17	No-load loss	KW	4.35
18	On load loss	KW	28
19	<b>Basic insulation level</b>		
19.1	Basic impulse lighting withstand voltage-primary side(BIL)	KV	75
19.2	Power Frequency withstand voltage-primary side	KV	28
19.3	Basic impulse lighting withstand voltage-secondary side(BIL)	KV	60
19.4	Power Frequency withstand voltage-secondary side	KV	20
19.5	Oil temperature rise @ rated service condition	K	55
19.6	Winding temperature rise @ rated service condition	K	65
20	<b>Material</b>		
20.1	Winding material		Cu
20.2	Core material		Grain oriented silicon steel sheet
20.3	Coolant material		PCB free transformer mineral oil
20.4	HV bushing material		Porcelain
20.5	Neutral bushing material		Porcelain
20.6	LV bushing material		Porcelain

**JIANGSHAN SCOTECH ELECTRICAL CO.,LTD**

21	<b>Dimension and weight</b>		
21.1	Transport Dimension(L*W*H)	mm	As per drawing
21.2	Transport Weight	kg	As per drawing
21.3	Overall Dimension(L*W*H)	mm	As per drawing
21.4	Total Weight	kg	As per drawing
22	<b>Others</b>		
22.1	Location of HV bushings		Mounted on side of tank inside HV cable box
22.2	Location of LV bushings		Mounted on side of tank inside LV cable box
22.3	Location of Neutral bushings		Mounted on side of tank inside LV cable box
<b>23</b>	<b>Accessories</b>	<b>QTY</b>	<b>Remarks</b>
23.1	Hot dipped galvanized plate type detachable radiator	1 lot	/
23.2	Oil temperature indicator with alarm and trip contacts	1	/
23.3	Pressure relief valve	1	/
23.4	Oil level indicator	1	/
23.5	Buchholz relay with alarm and trip contacts	1	/
23.6	Oil conservator	1	/
23.7	Breather	1	/

**JIANGSHAN SCOTECH ELECTRICAL CO.,LTD**

23.8	Oil sample valve	1	/
23.9	Oil drain valve	1	/
23.10	Oil filling valve	1	/
23.12	Earthing terminal	1	/
23.13	Terminal box	1	Stainless steel
23.14	Lifting lugs	4	For top cover and whole unit
23.15	Skid base	1	/
23.16	No load tap changer	1	/

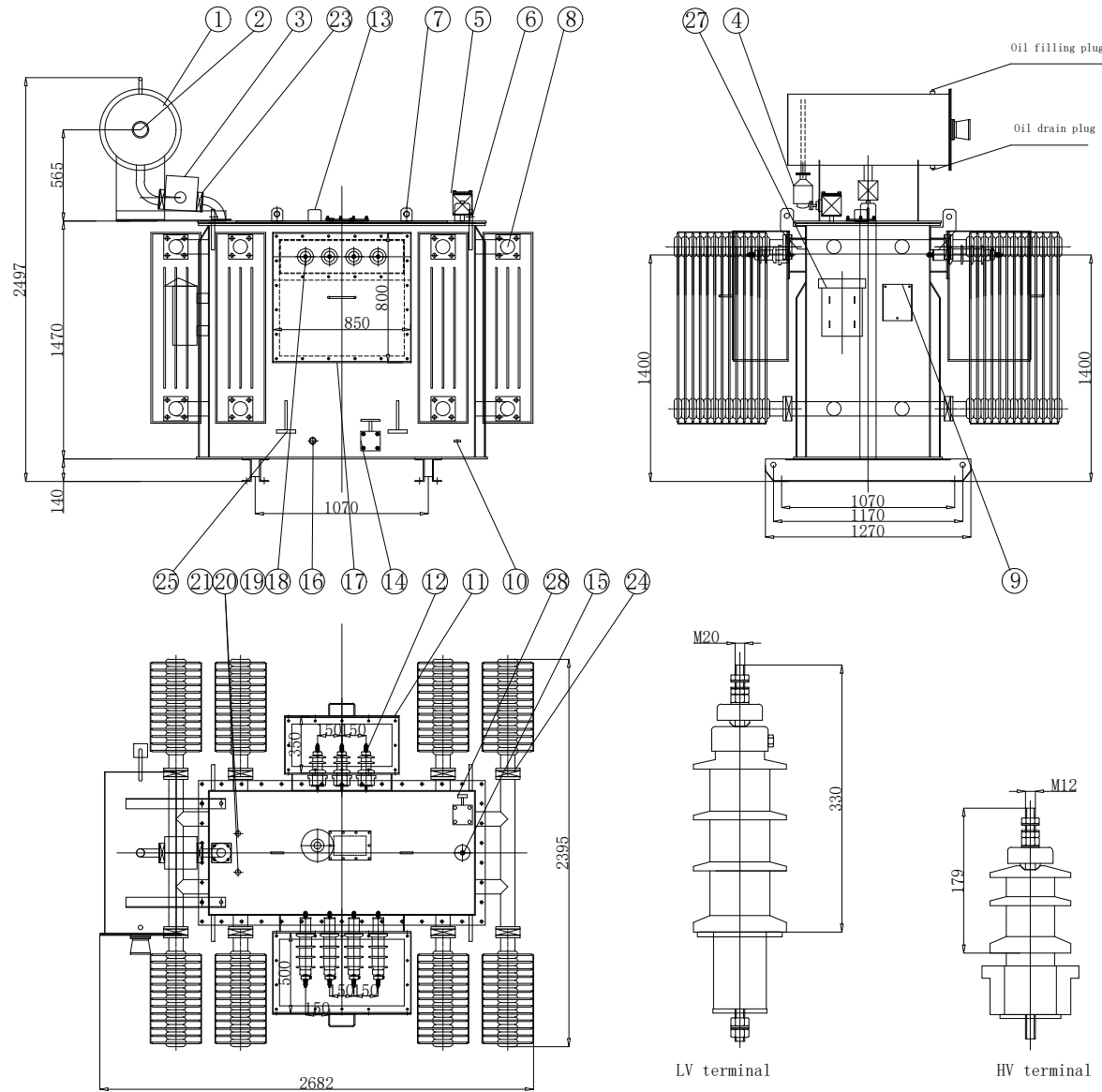
CONFIDENTIAL



**SCOTECH**

Weight (KG)

Active part	Oil	Total
5000	1350	7900



29						
28	The filter valve	1	∅25valve			
27	Terminal box	1	Steel			
26						
25	Lifting jack pad	4				
24	Radiator isolating valve	16	∅80Valve			
23	Gas relayisolating valve	2	∅50Valve			
22						
21	Thermometer tube	1				
20	Thermometer tube	1				
19	LV bushing	3	BD-10/630			
18	Neutral bushing	1	BD-10/630			
17	LV cable box	1				
16	Oil sample valve	1				
15	Rating plate base	1				
14	Tank oil drain valve	1	∅25valve			
13	No-load tap changer	1	WSP11-250/10-6*5			
12	HV bushing	3	BJL-10/315			
11	HV cable box	1				
10	Earthing steel plate	1				
9	Temp. controller base	1	BWY803AG (TH)			
8	Radiator	8	PC-1000-13/310			
7	Lifting hook	2				
6	Lifting lugs	4				
5	Pressure relief valve	1	YSF4-35/50			
4	Silica gel breather	1	0.5KG			
3	Gas relay	1	QJ1-50A			
2	Oil level gauge	1	YZF2-140			
1	Conservator	1	440*1000			

No.	Code	Name	QTY	Material
		4000KVA-11/6.6KV		
		Dyn11		
		transformer		

