

Technical Specification and Drawing
800KVA-11(6.6)/0.4KV
DISTRIBUTION TRANSFORMER
No.2014007

JIANGSHAN SCOTECH ELECTRICAL CO., LTD

Add: No.8 Xinggong 1st Road, Jiangshan, Zhejiang, China

Name: Scott Lee

Tel: +86 13857027511

E-Mail: info@scotech.com

Skype: [dragonelectric123](https://www.skype.com/user/dragonelectric123)

Web: www.scotech.com



JIANGSHAN SCOTECH ELECTRICAL CO.,LTD

Technical Data Sheet

No.	Basic information	Unit	Guaranteed
1	Manufacturer		Jiangshan Scotech Electrical Co.,Ltd
2	Standard		IEC60076
3	Type		Oil immersed power transformer
4	Installation		Outdoor
5	Altitude	M	≤1000
6	Rated power	KVA	800
7	Primary voltage	KV	11 and 6.6 dual voltage
8	Secondary voltage	KV	0.4
9	Vector group		Dyn11
10	Rated Frequency	HZ	50
11	Cooling		ONAN
12	Number of windings		2
13	Number of phases		3
14	Type of tap Changer		NLTC
15	Tapping range		±2*2.5%@primary side

JIANGSHAN SCOTECH ELECTRICAL CO.,LTD

16	Impedance	%	5
17	No-load loss	KW	1.6
18	On load loss	KW	8
19	Basic insulation level		
19.1	Basic impulse lighting withstand voltage-primary side(BIL)	KV	75
19.2	Power Frequency withstand voltage-primary side	KV	28
19.3	Basic impulse lighting withstand voltage-secondary side(BIL)	KV	/
19.4	Power Frequency withstand voltage-secondary side	KV	5
19.5	Oil temperature rise @ rated service condition	K	50
19.6	Winding temperature rise @ rated service condition	K	55
20	Material		
20.1	Winding material		Cu
20.2	Core material		Grain oriented silicon steel sheet
20.3	Coolant material		PCB free transformer mineral oil
20.4	HV bushing material		Porcelain
20.5	Neutral bushing material		Porcelain
20.6	LV bushing material		Porcelain

JIANGSHAN SCOTECH ELECTRICAL CO.,LTD

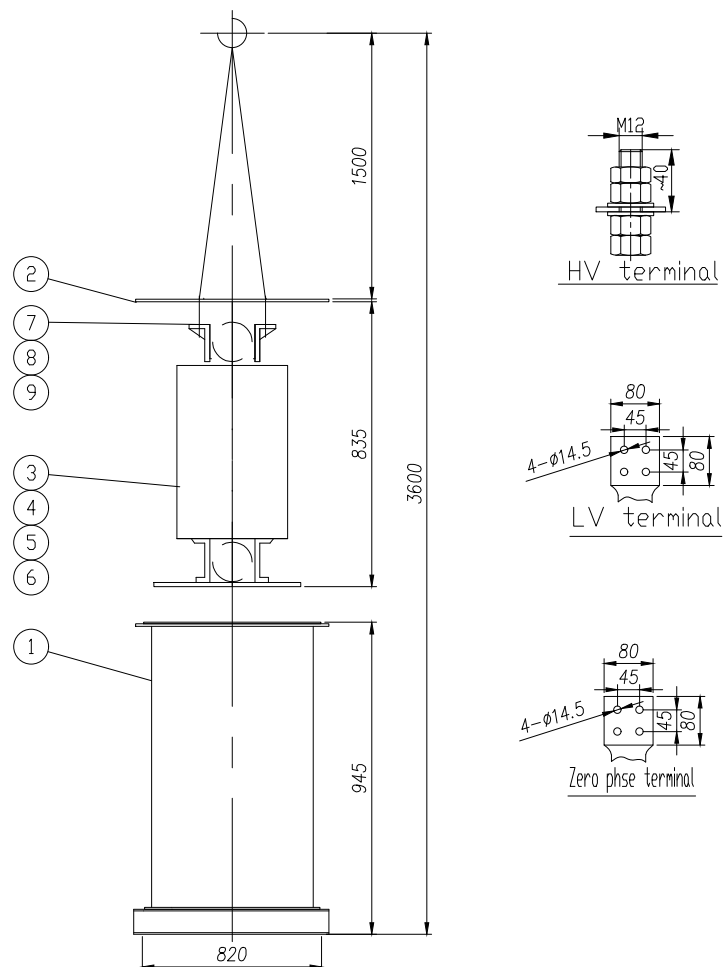
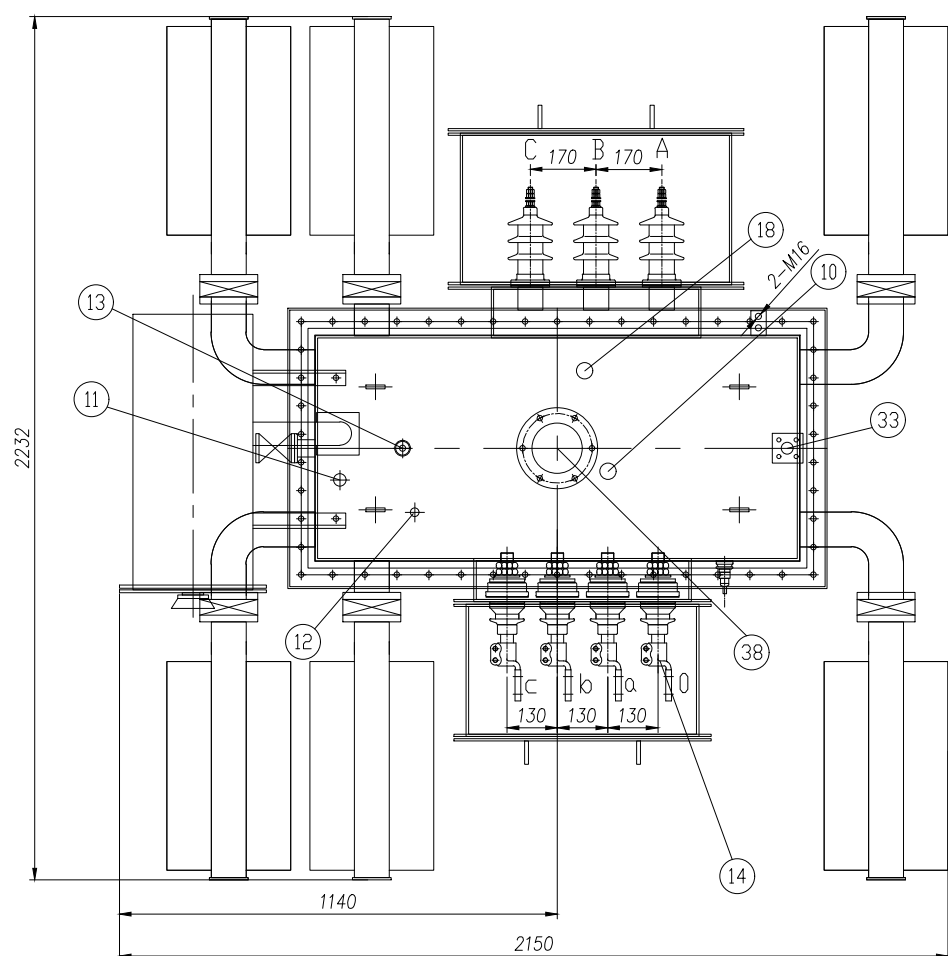
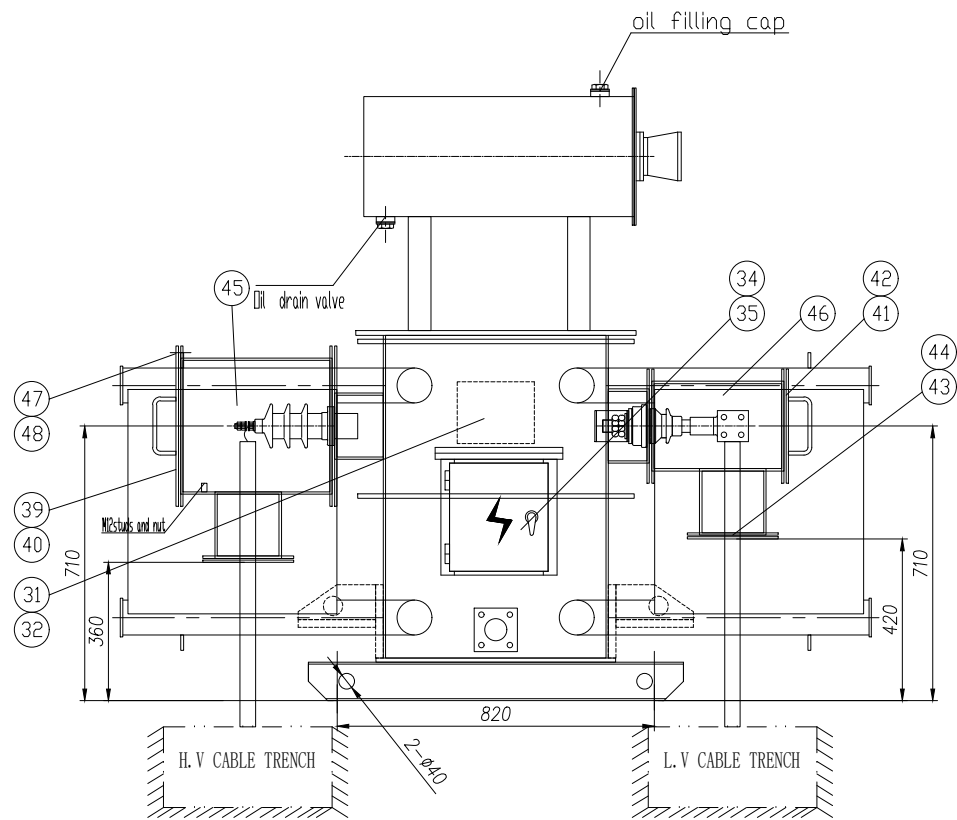
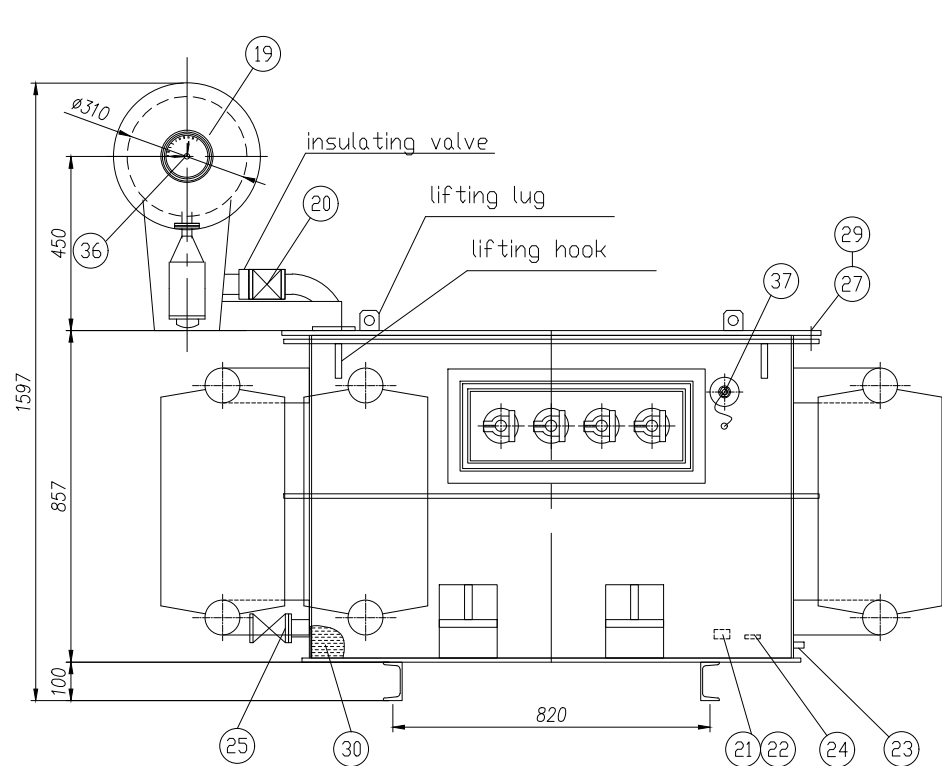
21	Dimension and weight		
21.1	Transport Dimension(L*W*H)	mm	As per drawing
21.2	Transport Weight	kg	As per drawing
21.3	Overall Dimension(L*W*H)	mm	As per drawing
21.4	Total Weight	kg	As per drawing
22	Others		
22.1	Location of HV bushings		Mounted on side of tank inside HV cable box
22.2	Location of LV bushings		Mounted on side of tank inside LV cable box
22.3	Location of Neutral bushings		Mounted on side of tank inside LV cable box
23	Accessories	QTY	Remarks
23.1	Plate type detachable radiator	1 lot	/
23.2	Oil temperature indicator with alarm and trip contacts	1	/
23.3	Pressure relief valve	1	/
23.4	Oil level indicator	1	/
23.5	Buchholz relay with alarm and trip contacts	1	/
23.6	Oil conservator	1	/
23.7	Breather	1	/

JIANGSHAN SCOTECH ELECTRICAL CO.,LTD

23.8	Oil sample valve	1	/
23.9	Oil drain valve	1	/
23.10	Oil filling valve	1	/
23.12	Earthing terminal	1	/
23.13	Terminal box	1	Stainless steel
23.14	Lifting lugs	4	For top cover and whole unit
23.15	Skid base	1	/
23.16	No load tap changer	1	/

CONFIDENTIAL



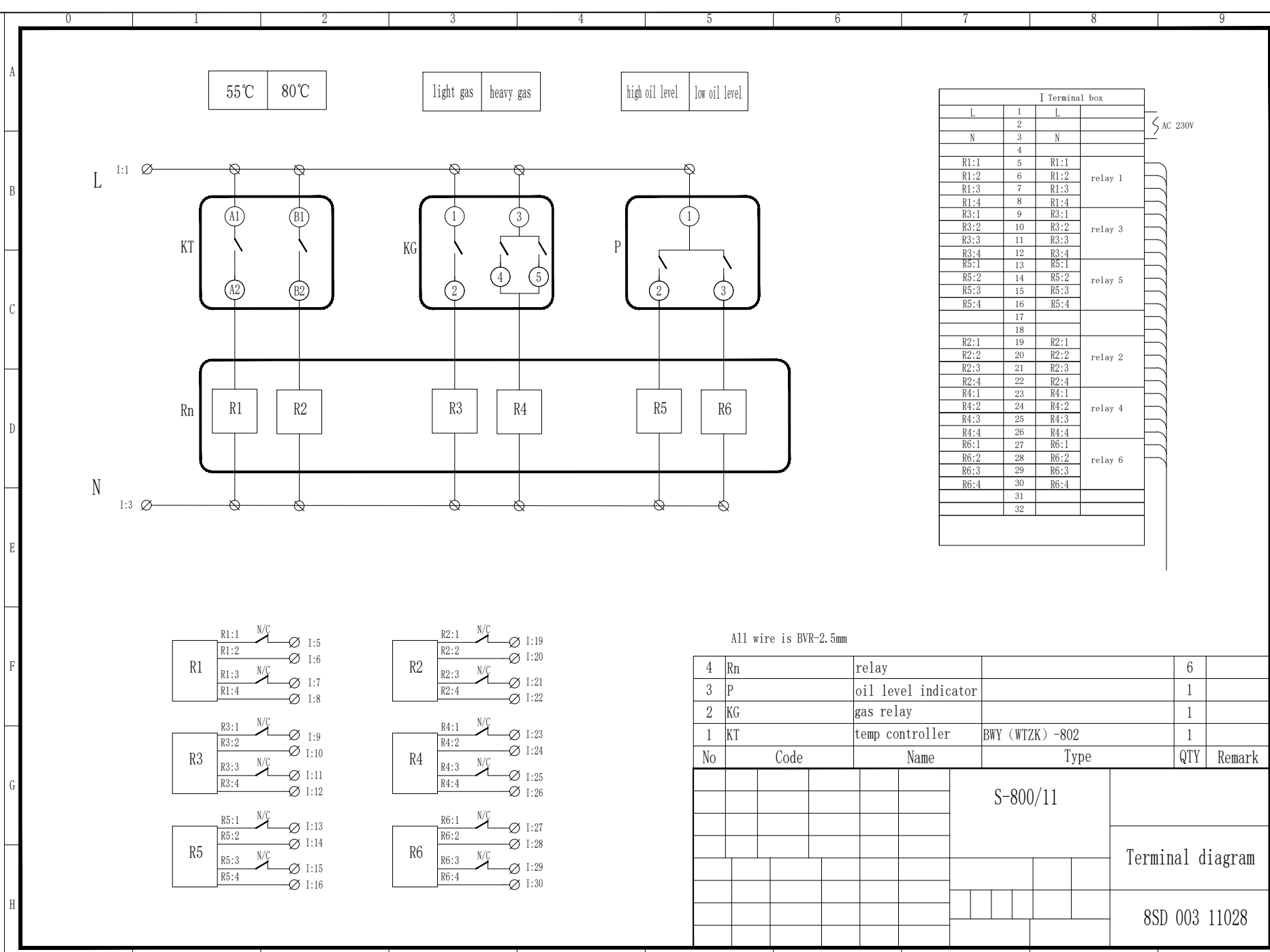


Weight kg

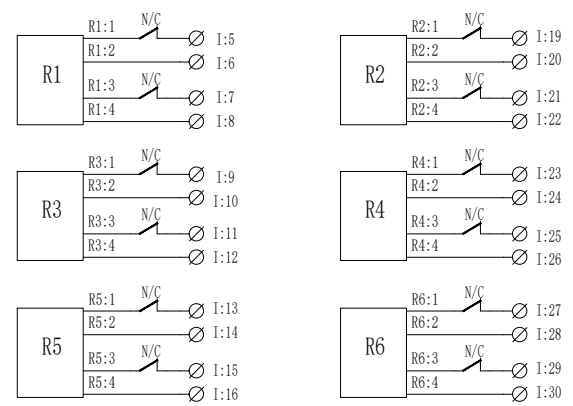
Active part	Total oil	Total weight	Transport
1430	490	3150	2050

48	GB/T6170-2000	Nut M12	100				stainless steel
47	GB/T5782-2000	Bolt M12x55	100				stainless steel
46	5SD 011 11028	LV cable box	1				
45	5SD 010 11028	HV cable box	1				
44	8SD 009 11028	sealing gasket	2				
43	8SD 008 11028	Cover plate	2				
42	8SD 007 11028	Sealing gasket	2				
41	8SD 006 11028	Cover plate	1				
40	8SD 005 11028	Sealing gasket	2				
39	8SD 004 11028	Cover plate	1				
38	8SD 002 11028	Hand hole cover plate	1				
37	BF -1/300	Core earthing bushing	1				
36	YZF -140	Oil level indicator	1				
35	8SD 003 11028	Terminal box connection diagram	1				
34		Terminal box	1				
33	10SD 601 001	oil filter valve 2#	1				
32	GB/T67-2000	Bolt M4X8	4				
31	1SD 001 11028MP	Rating plate	1				
30		Oil 25#	490kg				
29	GB/T6170-2000	Nut M16	50				stainless steel
28	GB/T5782-2000	Bolt M16x55	50				stainless steel
27		sealing gasket $\phi 16$	1				
26		Breather 0.5kg	1				
25		Oil drain valve 50	1				
24		Earthing nut	2				
23		Oil sampling valve	1				
22	GB/T867-1986	Rivet $\phi 3 \times 5$	22				
21		Word plate	8				stainless steel
20		Gas relay QJ1-50	1				
19	$\phi 310 \times 700$	Conservator	1				
18	WSTW63-10/5x2	Voltage switch	1				
17	PC600-13/320	Hot dipped radiator(painted)	6				
16	BF -1/1200	LV bushing	3				
15	BLQ -10/315	HV bushing	3				
14	BF -1/1200	Zero phase bushing	1				
13	YSF8-55/50	Pressure relief valve	1				
12		Mercury thermometer base	1				
11	BWY-802	Temperature indicator	1				
10	WSP#125-10/6x5	NLTC	1				
9	GB97.1-2000	Gasket M12	4				
8		Locknut M12	4				
7		Lockbolt M12x45	4				
6	5SD 801 11028	LV leads	1				
5	5SD 701 11028	HV leads	1				
4	5SD 401 11028	Insulation assemble	1				
3	5SD 301 11028	Core assemble	1				
2	5SD 201 11028	Tank cover welding	1				
1	5SD 101 11028	Tank welding	1				

No.	Code	Name	QTY	Material	Remark
		800KVA-11(6.6)/0.4KV		1SD 001 11028	
		Transformer			



I Terminal box			
L	1	L	
	2		
N	3	N	
	4		
R1:1	5	R1:1	relay 1
R1:2	6	R1:2	
R1:3	7	R1:3	
R1:4	8	R1:4	
R3:1	9	R3:1	relay 3
R3:2	10	R3:2	
R3:3	11	R3:3	
R3:4	12	R3:4	
R5:1	13	R5:1	relay 5
R5:2	14	R5:2	
R5:3	15	R5:3	
R5:4	16	R5:4	
	17		
	18		
R2:1	19	R2:1	relay 2
R2:2	20	R2:2	
R2:3	21	R2:3	
R2:4	22	R2:4	
R4:1	23	R4:1	relay 4
R4:2	24	R4:2	
R4:3	25	R4:3	
R4:4	26	R4:4	
R6:1	27	R6:1	relay 6
R6:2	28	R6:2	
R6:3	29	R6:3	
R6:4	30	R6:4	
	31		
	32		



All wire is BVR-2.5mm

No	Code	Name	Type	QTY	Remark
4	Rn	relay		6	
3	P	oil level indicator		1	
2	KG	gas relay		1	
1	KT	temp controller	BWY (WTZK) -802	1	
			S-800/11		
				Terminal diagram	
				8SD 003 11028	