

Assemble steps of A4 filing drawer cabinets

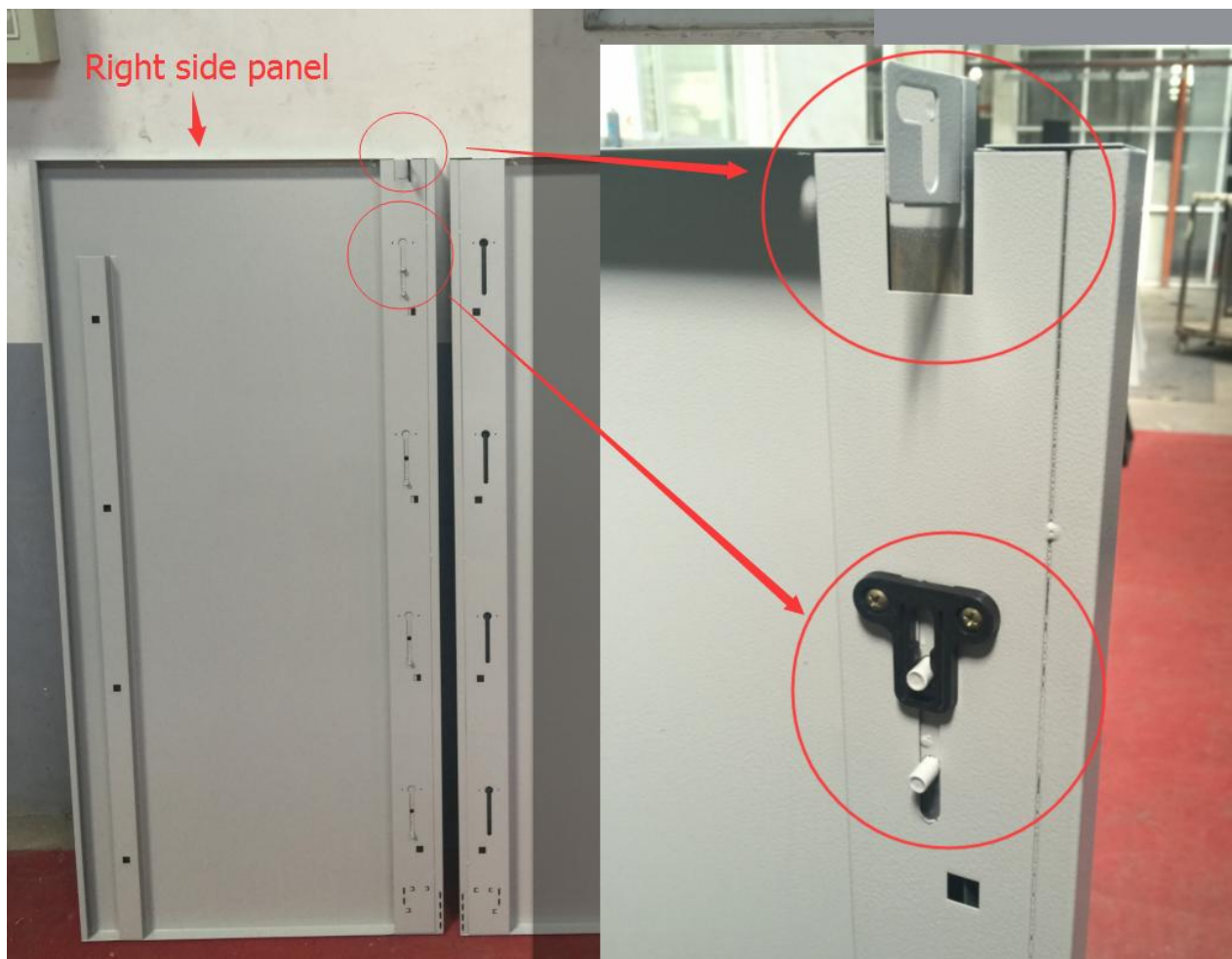
1. Take all the parts from the package



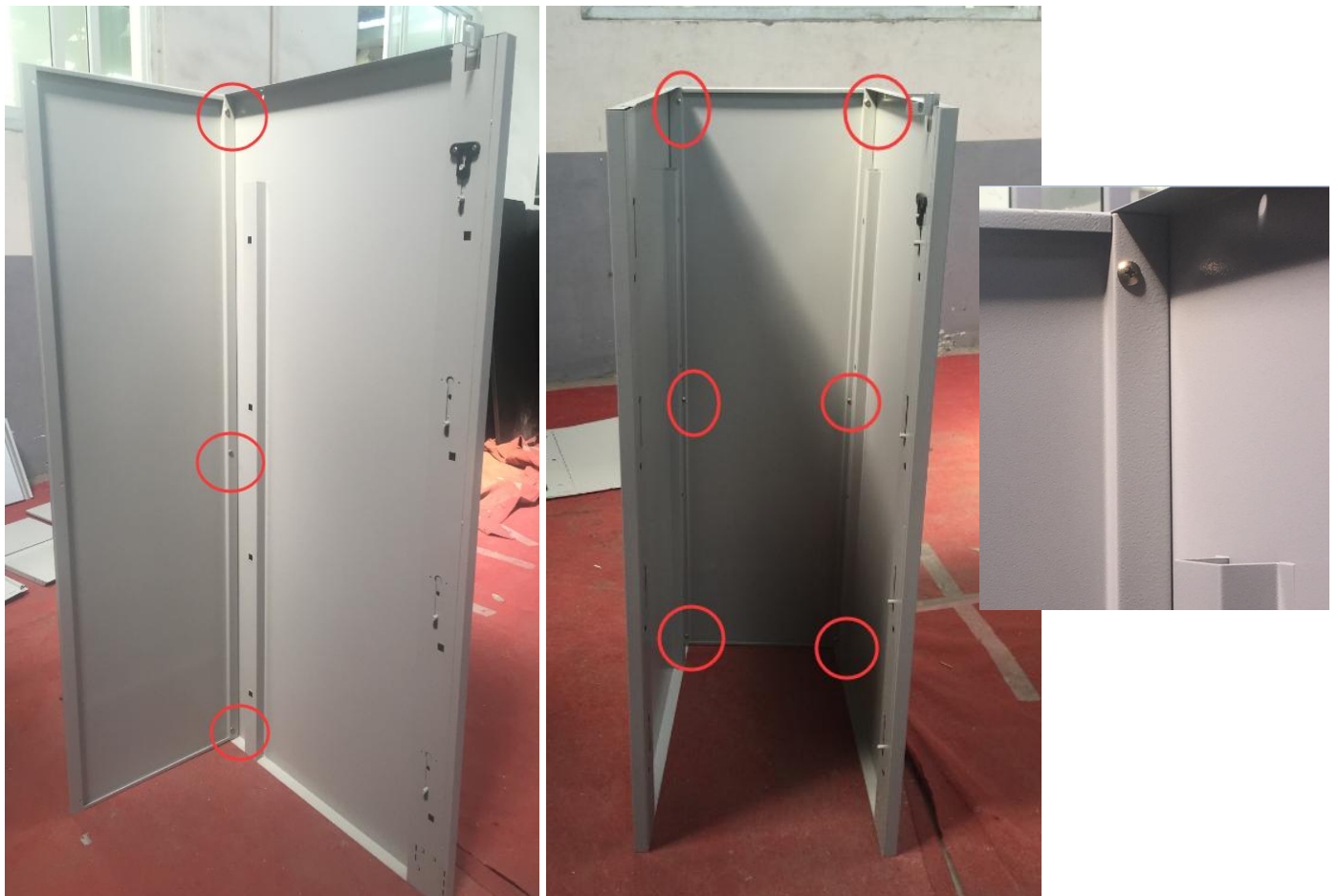
2. Prepare the screwdriver and screws



3. Find the right side panel and assemble the black plastic parts by 2 screws



4. Assemble side panels and back panel with screws



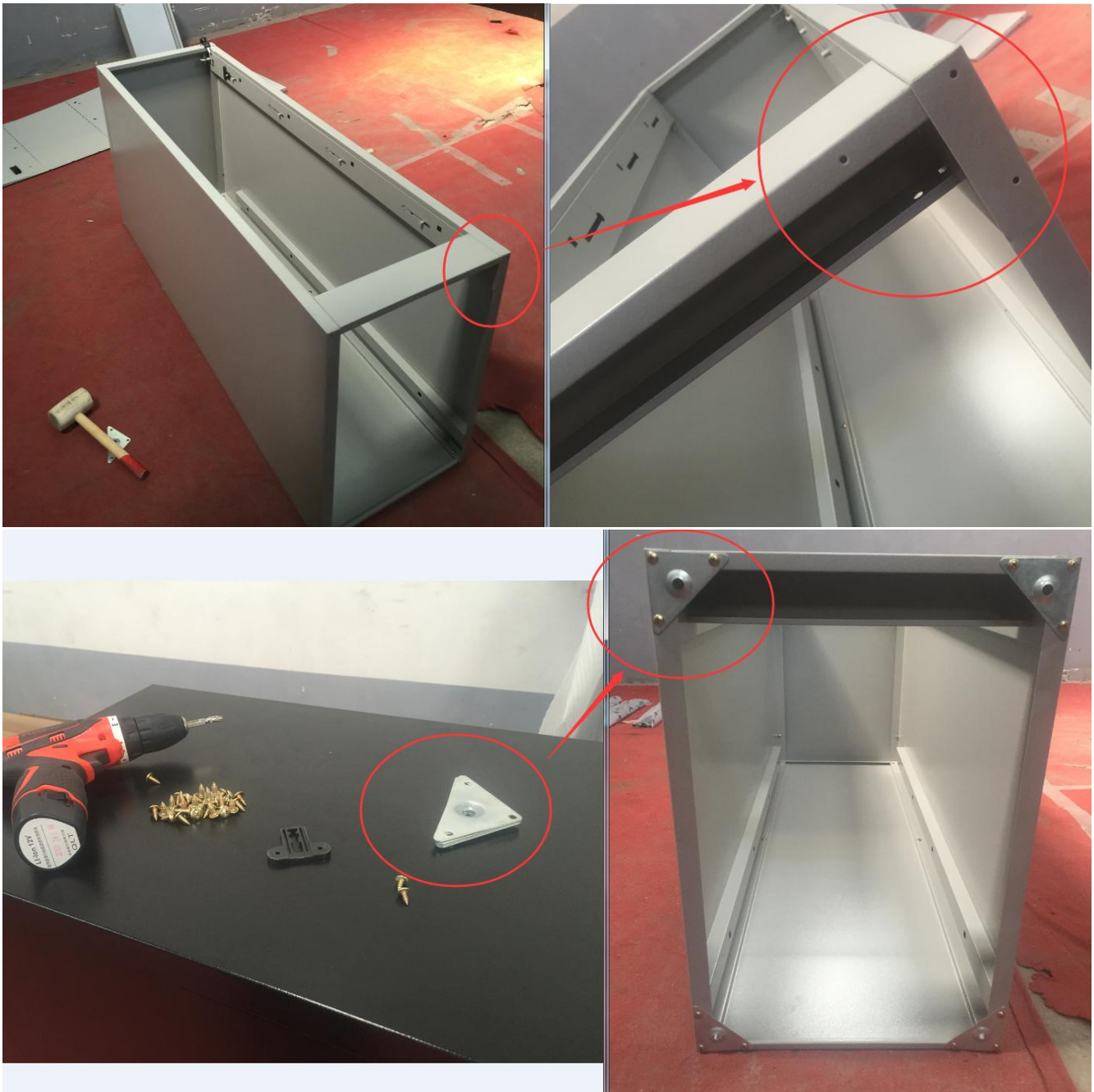
5. Assemble the top panels with 4 screws inside and make sure the lock put through the hole of locking bar (see picture).



6. Fix the bottom parts and make sure the metal bend as the photo.



7. Lay down the cabinet and fix the bottom triple shape metal piece with screw.



8. Fix the rails inside the cabinet.



9. Fix drawers and put drawers inside the cabinet.





