



山东沃丰新材料有限公司
Shandong Wofeng New Material Co., Ltd.

地址：山东省济南市莱芜区云台山路001号

ADD: No. 001 Yuntaishan Road, Laiwu District,
Jinan City, Shandong, China

TEL: +86-531-75615588

FAX: +86-531-75615587

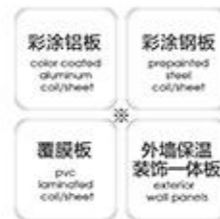
E-MAIL: sale@sd-wofeng.com/sale@metalwofeng.com

WEB: www.sd-wofeng.com/www.wofengcoil.com

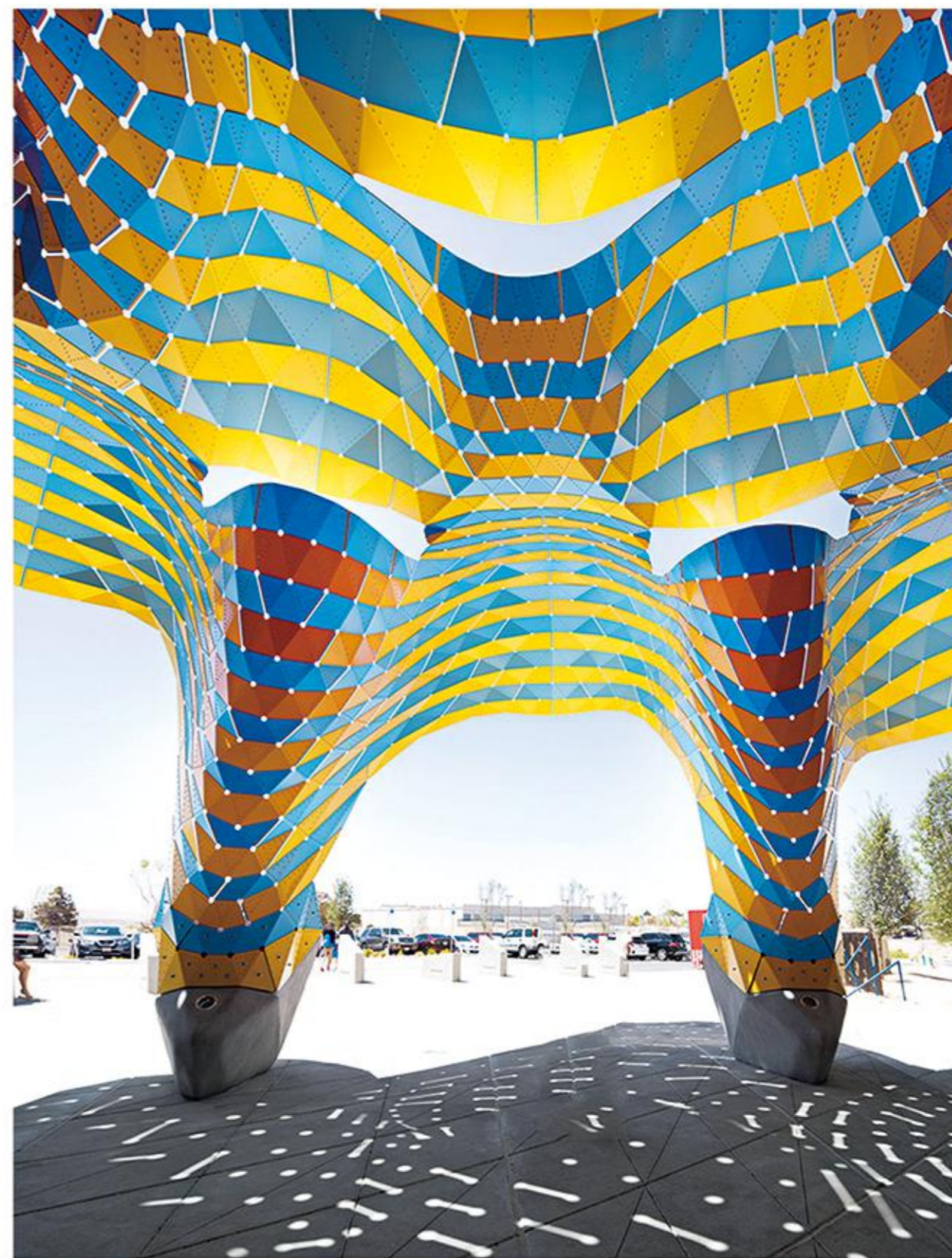


Products Catalogue

COLOR
—COATED SHEET



产品花色图册
沃丰·高端彩涂板领导品牌
WOFENG · TOP BRAND OF HIGH-END
COLOR COATED SHEET—



C O N
T E N T S -

| 目录

I 关于沃丰 ABOUT WOFENG

II 木纹系列 WOOD SERIES
砖纹系列 BRICK SERIES

III 大理石系列 MARBLE SERIES
花岗岩系列 GRANITE SERIES

IV 迷彩系列 CAMOUFLAGE SERIES
覆膜系列 LAMINATED SERIES

V 特殊花色 SPECIAL COLOR
特殊效果 SPECIAL EFFECT



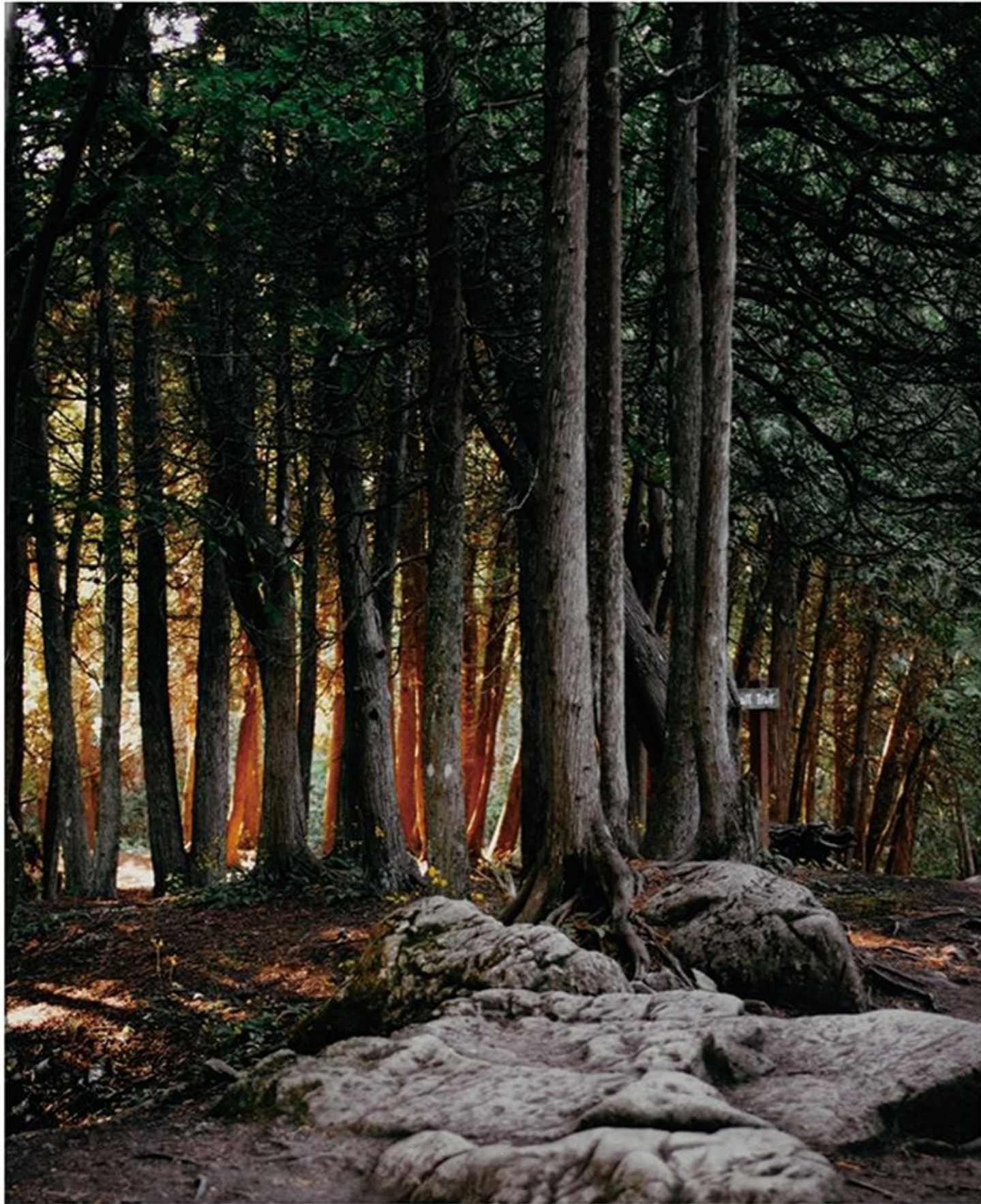
涂层表面：氟碳(PVDF)、聚酯(PE)、环氧树脂(EXPOSY)和聚氨酯(PU)
产品规格：铝 0.2-3.0mm(厚)、钢 0.15-1.5mm(厚)、≤1300mm(宽)
膜厚：根据客户需求定制

山东沃丰新材料有限公司是一家集设计、研发、生产、销售高端彩涂铝卷/板、彩涂钢卷/板、覆膜板及金属外墙保温装饰一体板的大型国家高新技术企业，荣获国家专利30多项。位于山东省济南市莱芜区，产品广泛应用于建筑外墙、内装、电器等领域，目前已销往欧美、澳大利亚、俄罗斯、中东、东南亚等四十多个国家及国内地区。

沃丰不断跨越发展，构建自有的核心优势，协同产业优势资源，以整体化的服务为客户提供更具深度的定制化产品解决方案，让沃丰产品在建筑、电器等领域持续发展。

Coating: PVDF, PE, EXPOSY, PU. Specification: thickness: aluminum 0.2-3.0mm, steel 0.15-1.5mm, width≤1300mm. Coating thickness: As per customer's requirements.
Shandong Wofeng New Materials Co., Ltd. is a large-scale national high-tech enterprise integrating design, research and development, production and sales of high-end color-coated aluminum coils/sheets, color-coated steel coils/sheets, laminated sheets and exterior insulation and decoration integrated metal wall panels. Already got more than 30 national patents. Located in Laiwu District, Jinan City, Shandong Province. The products are widely used in construction, home appliances, interior decoration and other various industries. We have two production bases in China. Our products are exported to Europe, America, Australia, Russia, Middle East, Southeast Asia and other countries and regions.
WOFENG continuously develops by strides, builds our own key strengths, cooperates with super resources in this industry and serves clients with deep customized total products solutions. All this leads to a sustainable development in construction, home appliances and other industries.

Wood Series - 木纹



| WFWOOD0101 黄枫 *



| WFWOOD0102 红胡桃 *



| WFWOOD0103 黑胡桃 *



| WFWOOD0105 *



| WFWOOD0106 *



| WFWOOD0108 白枫 *



| WFWOOD0107 *



| WFWOOD0109 *



| WFWOOD0110 *



| WFWOOD0111 *



| WFWOOD0112 *

根据用户需求可定制任意颜色 CUSTOMIZED COLORS AS PER CLIENTS' REQUIREMENTS.

木纹系列
WOOD SERIES

砖纹系列
BRICK SERIES

大理石系列
MARBLE SERIES

花岗岩系列
GRANITE SERIES

迷彩系列
CAMOUFLAGE SERIES

覆膜系列
LAMINATED SERIES

特殊花色
SPECIAL COLOR

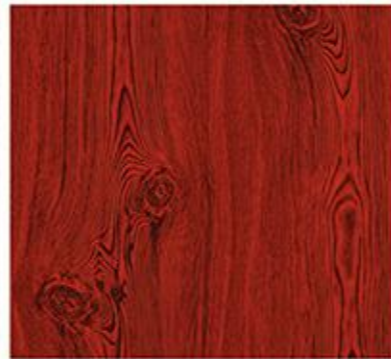
特殊效果
SPECIAL EFFECT



| WFWOOD02 黄鸡翅 *



| WFWOOD0202 黑鸡翅 *



| WFWOOD0203 红鸡翅 *



| WFWOOD18 金橡木 *



| WFWOOD18 3D *



| WFWOOD1802 *



| WFWOOD1803 *



| WFWOOD1804 *



| WFWOOD1805 *



| WFWOOD0301 松木 *



| WFWOOD0302 *



| WFWOOD0303 *



| WFWOOD0305 *



| WFWOOD0306 *



| WFWOOD0307 *



| WFWOOD0308 *



| WFWOOD21 古松木 *



| WFWOOD21-N *

根据用户需求可定制任意颜色 CUSTOMIZED COLORS AS PER CLIENTS' REQUIREMENTS.

木纹系列
WOOD SERIES

砖纹系列
BRICK SERIES

大理石系列
MARBLE SERIES

花岗岩系列
GRANITE SERIES

迷彩系列
CAMOUFLAGE SERIES

覆膜系列
LAMINATED SERIES

特殊花色
SPECIAL COLOR

特殊效果
SPECIAL EFFECT



| WFWOOD22 核桃木 *



| WFWOOD2201 *



| WFWOOD22 3D *



| WFWOOD2202 *



| WFWOOD2203 *



| WFWOOD2204 *



| WFWOOD27 *



| WFWOOD2702 *



| WFWOOD25 *



| WFWOOD25T 双色 *



| WFWOOD25 阴影 *



| WFWOOD2501 *



| WFWOOD2502 *



| WFWOOD2503 *



| WFWOOD28 榆木 *



| WFWOOD2801 *



| WFWOOD2803 *



| WFWOOD2805 *

根据用户需求可定制任意颜色 CUSTOMIZED COLORS AS PER CLIENTS' REQUIREMENTS.

木纹系列
WOOD SERIES

砖纹系列
BRICK SERIES

大理石系列
MARBLE SERIES

花岗岩系列
GRANITE SERIES

迷彩系列
CAMOUFLAGE SERIES

覆膜系列
LAMINATED SERIES

特殊花色
SPECIAL COLOR

特殊效果
SPECIAL EFFECT



| WFWOOD32 *



| WFWOOD3202 *



| WFWOOD3203 *



| WFWOOD3701 *



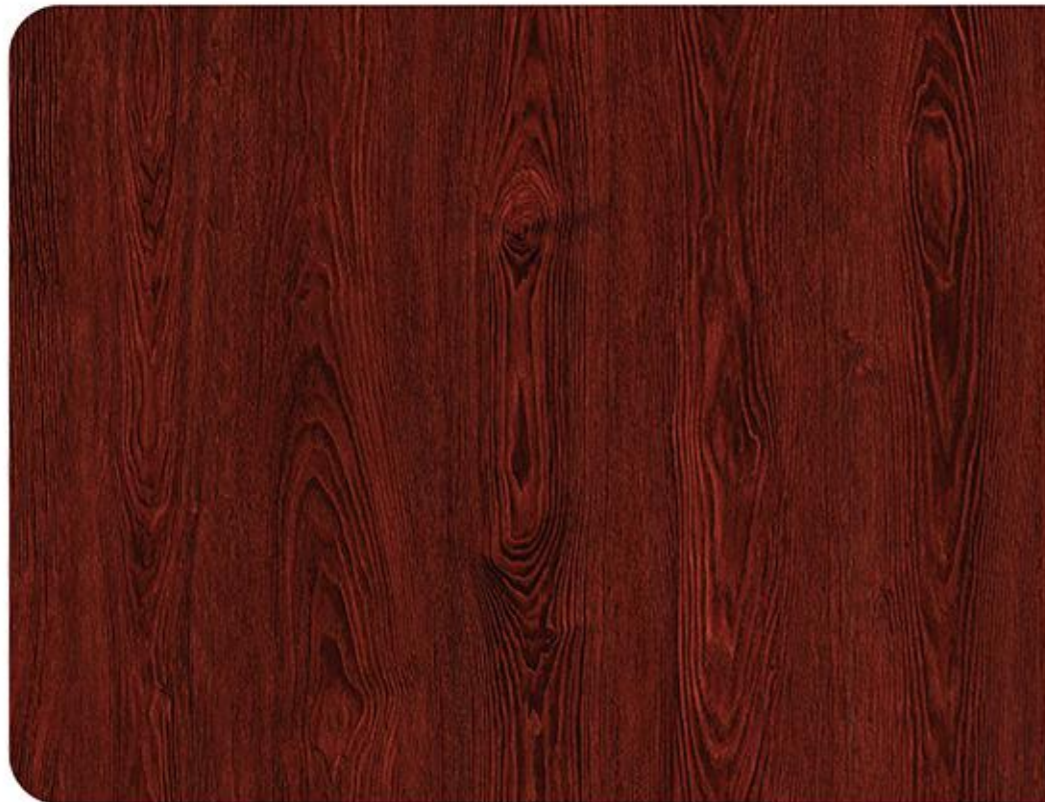
| WFWOOD3701 3D *



| WFWOOD3702 *



| WFWOOD3703 *



| WFWOOD3401 深蜡木 *



| WFWOOD3402 *



| WFWOOD3403 白橡木 *



| WFWOOD3405 *



| WFWOOD4001 橡木 *



| WFWOOD4002 橡木 *

根据用户需求可定制任意颜色 CUSTOMIZED COLORS AS PER CLIENTS' REQUIREMENTS.

木纹系列
WOOD SERIES

砖纹系列
BRICK SERIES

大理石系列
MARBLE SERIES

花岗岩系列
GRANITE SERIES

迷彩系列
CAMOUFLAGE SERIES

覆膜系列
LAMINATED SERIES

特殊花色
SPECIAL COLOR

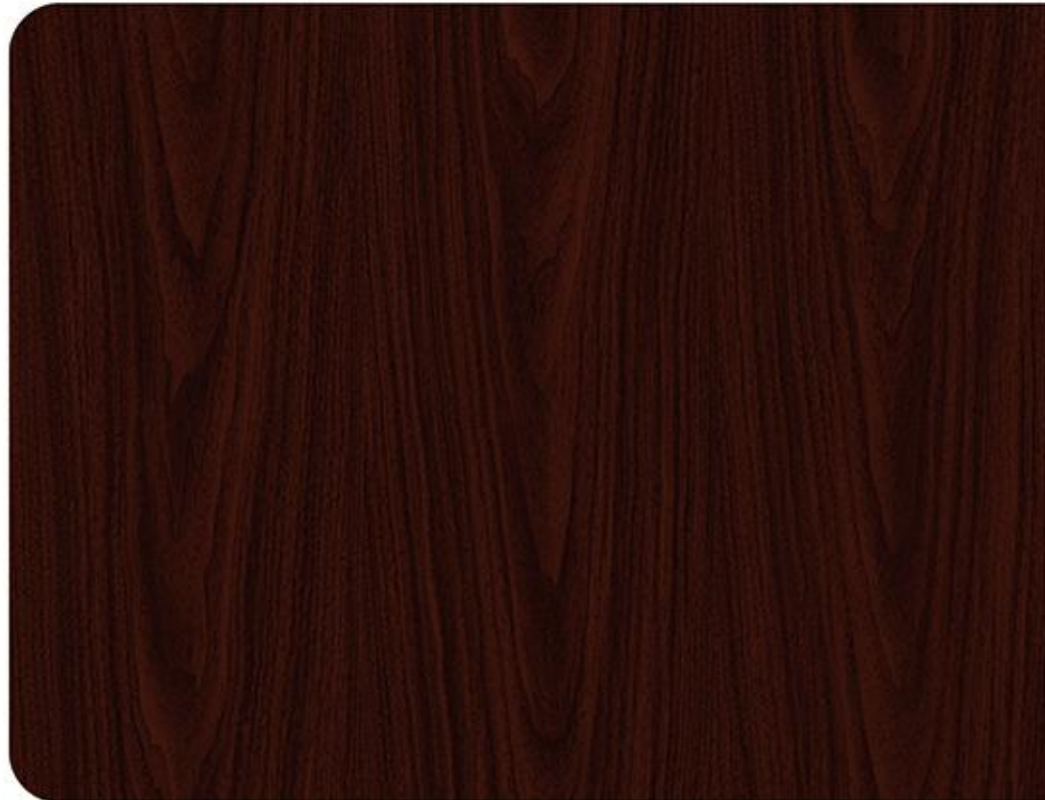
特殊效果
SPECIAL EFFECT



| WFWOOD4501 直木纹 *



| WFWOOD5401 *



| WFWOOD5001 胡桃木 *



| WFWOOD5002 *



| WFWOOD5003 *



| WFWOOD5601 新胡桃 *

根据用户需求可定制任意颜色 CUSTOMIZED COLORS AS PER CLIENTS' REQUIREMENTS.

木纹系列
WOOD SERIES

砖纹系列
BRICK SERIES

大理石系列
MARBLE SERIES

花岗岩系列
GRANITE SERIES

迷彩系列
CAMOUFLAGE SERIES

覆膜系列
LAMINATED SERIES

特殊花色
SPECIAL COLOR

特殊效果
SPECIAL EFFECT



| WFWOOD5801 灰色木纹 *



| WFWOOD6001 檀木 *



| WFWOOD5901 松木无结巴 *



| WFWOOD6601 直纹橡木 *

根据用户需求可定制任意颜色 CUSTOMIZED COLORS AS PER CLIENTS' REQUIREMENTS.

木纹系列
WOOD SERIES

砖纹系列
BRICK SERIES

大理石系列
MARBLE SERIES

花岗岩系列
GRANITE SERIES

迷彩系列
CAMOUFLAGE SERIES

覆膜系列
LAMINATED SERIES

特殊花色
SPECIAL COLOR

特殊效果
SPECIAL EFFECT



| WFWOOD8801 *



| WFWOOD6901 新黄橡木 *



| WFWOOD6801 直纹樱桃 *



| WFWOOD7201 橡木纹 *

根据用户需求可定制任意颜色 CUSTOMIZED COLORS AS PER CLIENTS' REQUIREMENTS.

木纹系列
WOOD SERIES

砖纹系列
BRICK SERIES

大理石系列
MARBLE SERIES

花岗岩系列
GRANITE SERIES

迷彩系列
CAMOUFLAGE SERIES

覆膜系列
LAMINATED SERIES

特殊花色
SPECIAL COLOR

特殊效果
SPECIAL EFFECT



| WFWOOD7301 橡木 *



| WFWOOD8301 *



| WFWOOD7501 *



| WFWOOD8401 *

木纹系列
WOOD SERIES

砖纹系列
BRICK SERIES

大理石系列
MARBLE SERIES

花岗岩系列
GRANITE SERIES

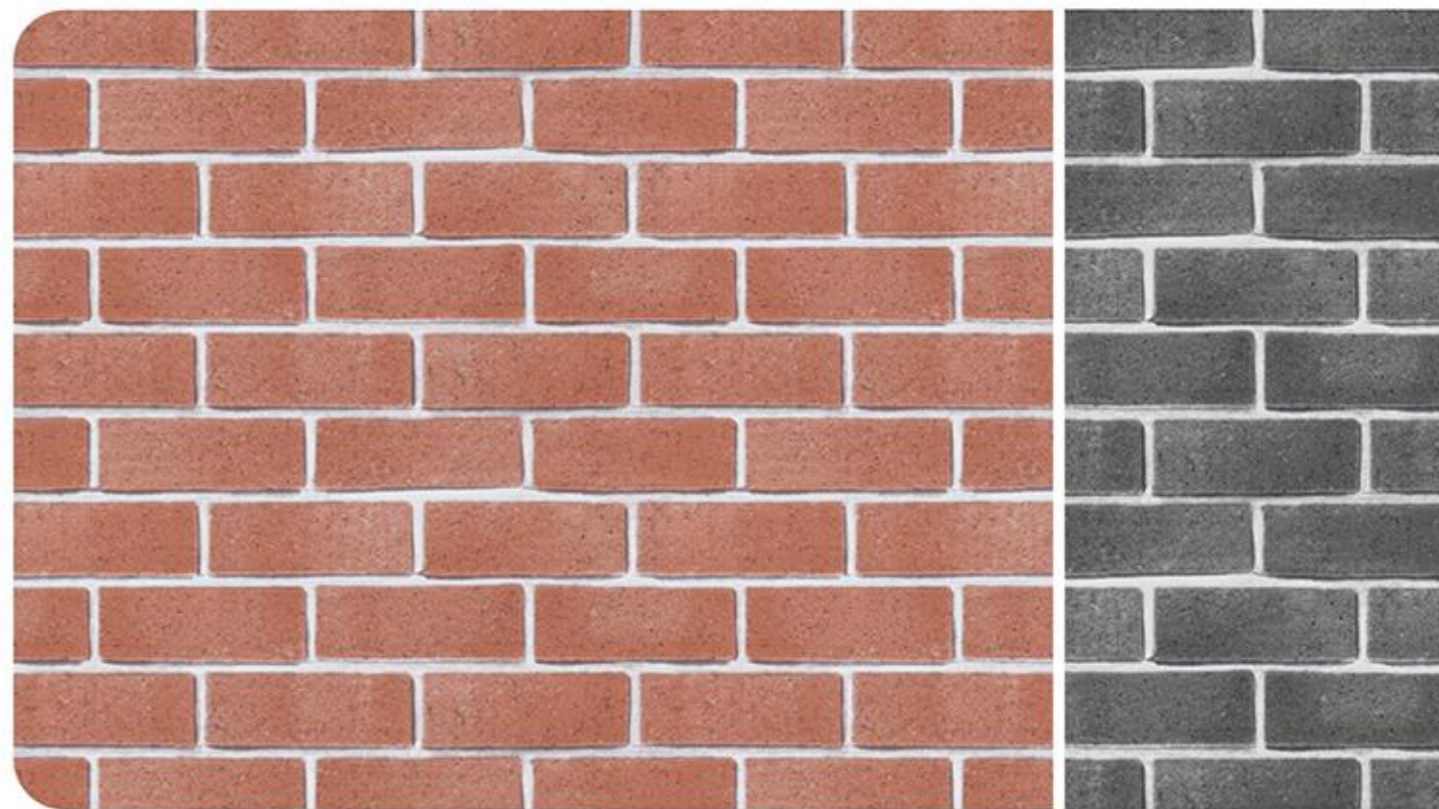
迷彩系列
CAMOUFLAGE SERIES

覆膜系列
LAMINATED SERIES

特殊花色
SPECIAL COLOR

特殊效果
SPECIAL EFFECT

Brick Series - 砖纹



| WFBRICK02 红砖 *

| WFBRICK0201 青砖 *



| WFBRICK0401 文化石 *

| WFBRICK0402 青文化石 *

根据用户需求可定制任意颜色 CUSTOMIZED COLORS AS PER CLIENTS' REQUIREMENTS.

木纹系列
WOOD SERIES

砖纹系列
BRICK SERIES

大理石系列
MARBLE SERIES

花岗岩系列
GRANITE SERIES

迷彩系列
CAMOUFLAGE SERIES

覆膜系列
LAMINATED SERIES

特殊花色
SPECIAL COLOR

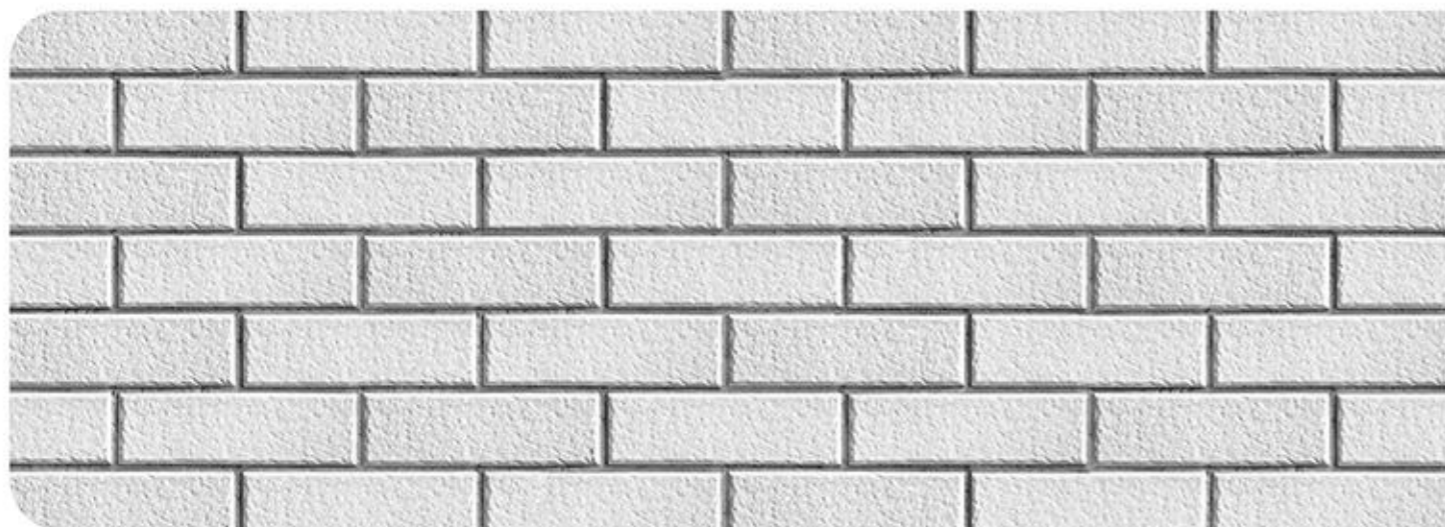
特殊效果
SPECIAL EFFECT



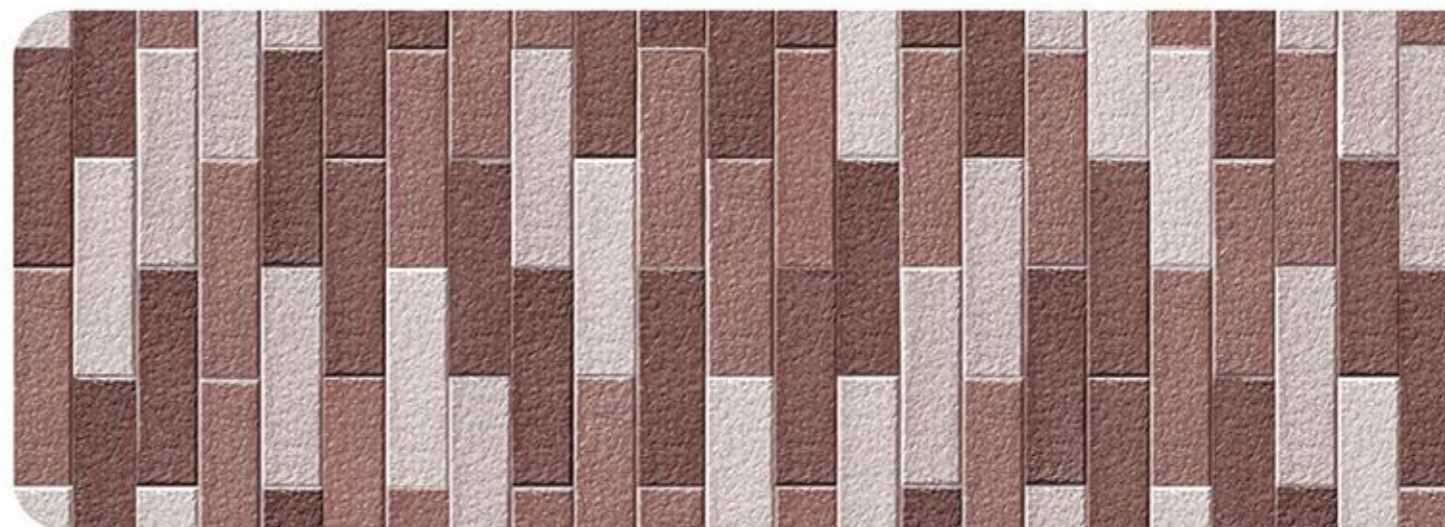
| WFBRICK06 纵向文化石 *



| WFBRICK13 *



| WFBRICK0701 单色瓷砖 *



| WFBRICK15 *



| WFBRICK08 大文化石 *



| WFBRICK1901 *

| WFBRICK1902 *

根据用户需求可定制任意颜色 CUSTOMIZED COLORS AS PER CLIENTS' REQUIREMENTS.

木纹系列
WOOD SERIES

砖纹系列
BRICK SERIES

大理石系列
MARBLE SERIES

花岗岩系列
GRANITE SERIES

迷彩系列
CAMOUFLAGE SERIES

覆膜系列
LAMINATED SERIES

特殊花色
SPECIAL COLOR

特殊效果
SPECIAL EFFECT



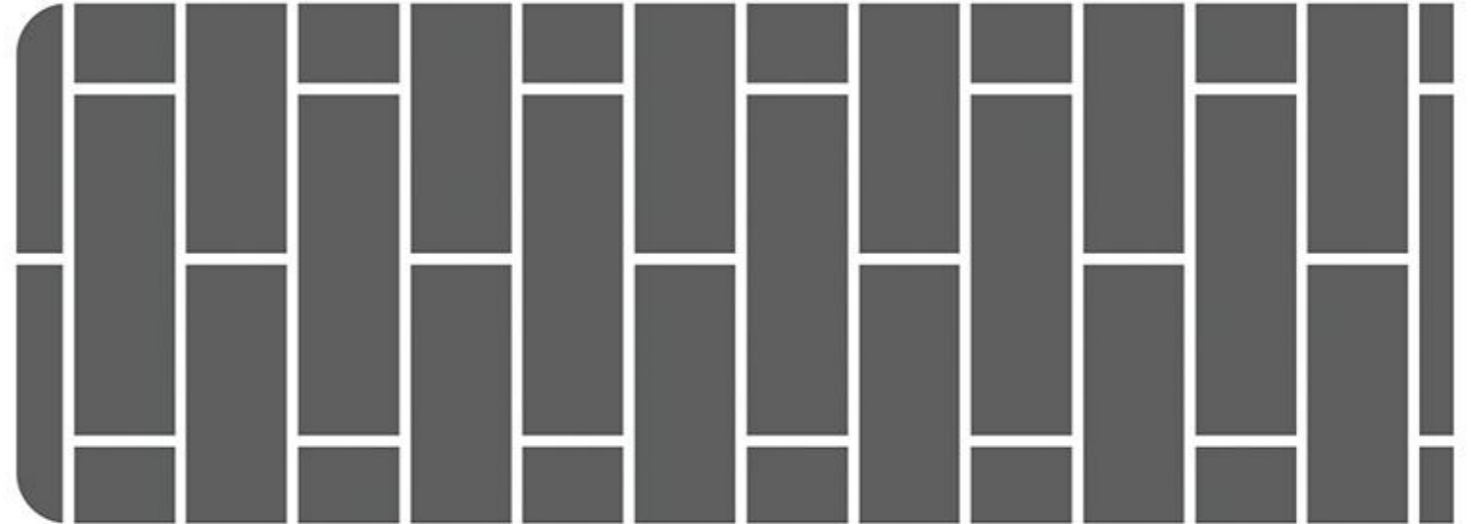
| WFBRICK2201 竖石纹 *



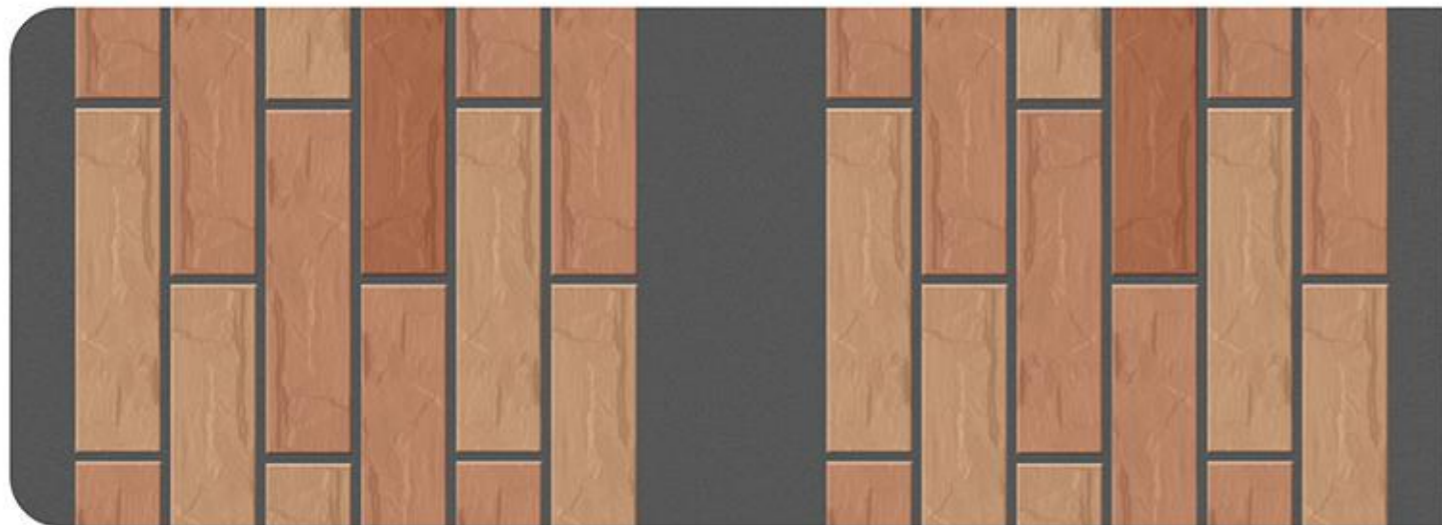
| WFBRICK2701 *



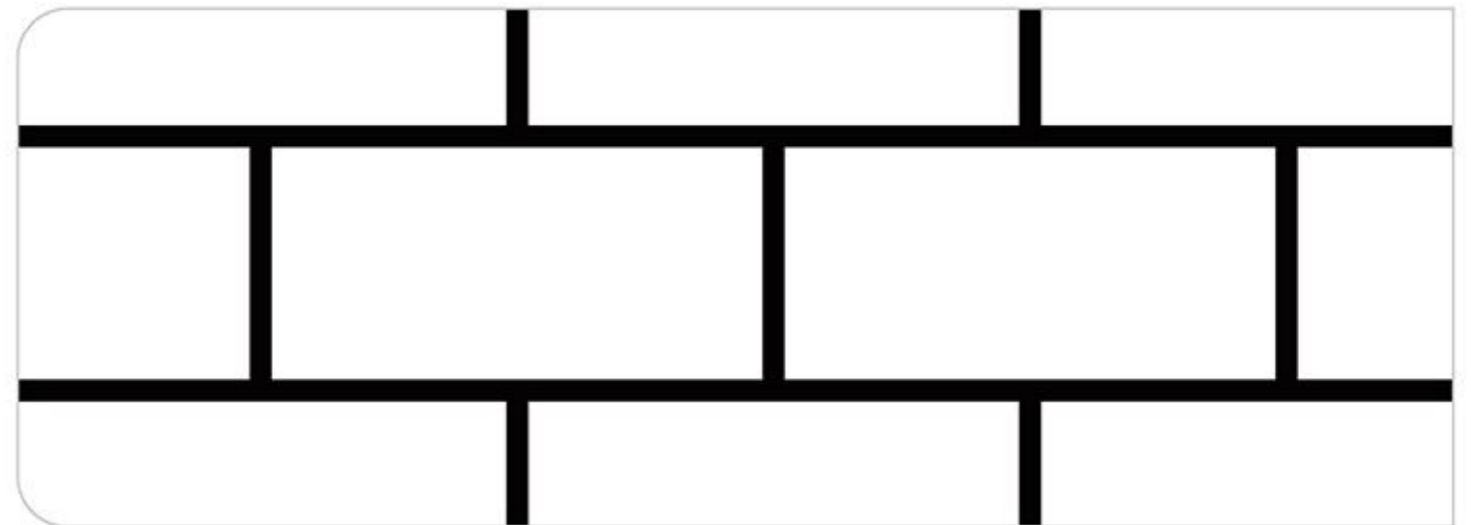
| WFBRICK2501 立体砖纹 *



| WFBRICK2801 *



| WFBRICK2601 瓷砖 *



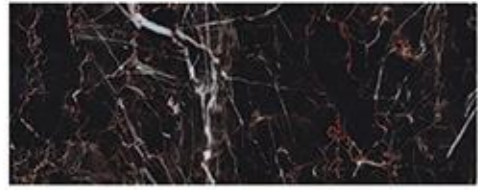
| WFBRICK2901 *

Marble Series - 大理石



根据用户需求可定制任意颜色 CUSTOMIZED COLORS AS PER CLIENTS' REQUIREMENTS.

- 木纹系列 WOOD SERIES
- 砖纹系列 BRICK SERIES
- 大理石系列 MARBLE SERIES
- 花岗岩系列 GRANITE SERIES
- 迷彩系列 CAMOUFLAGE SERIES
- 覆膜系列 LAMINATED SERIES
- 特殊花色 SPECIAL COLOR
- 特殊效果 SPECIAL EFFECT



| WFMARBLE26 杜鹃红



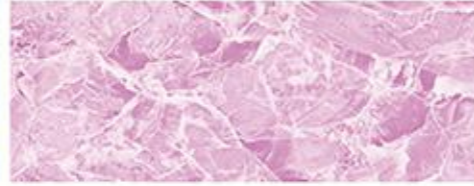
| WFMARBLE27 梦幻金黄



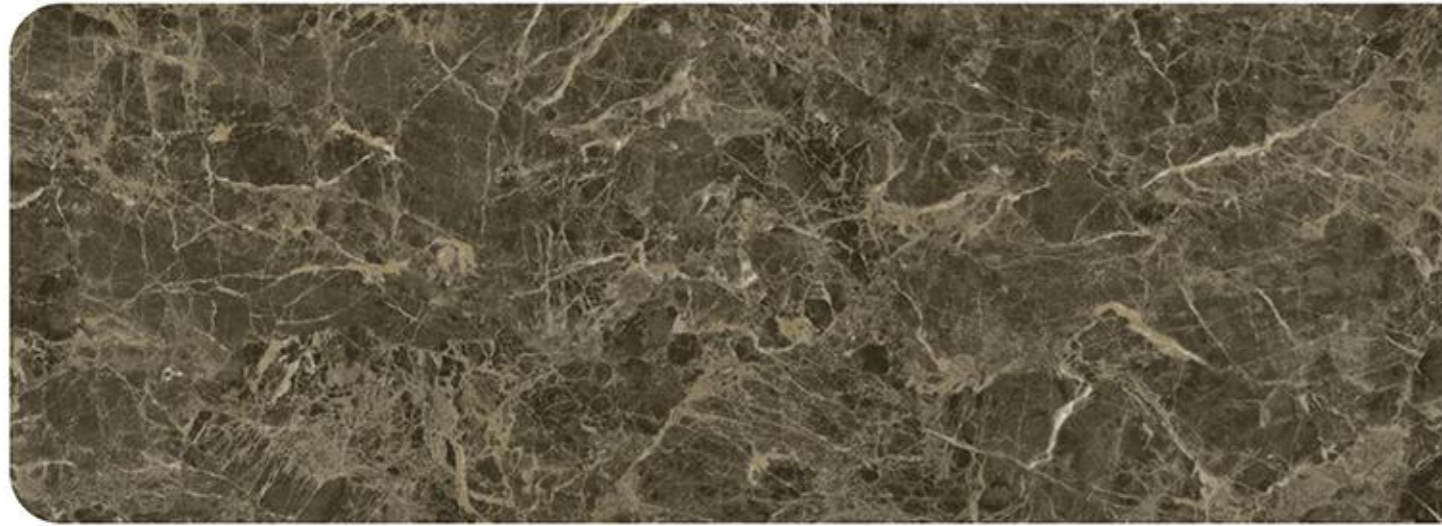
| WFMARBLE28 深啡网



| WFMARBLE29 黄龙玉



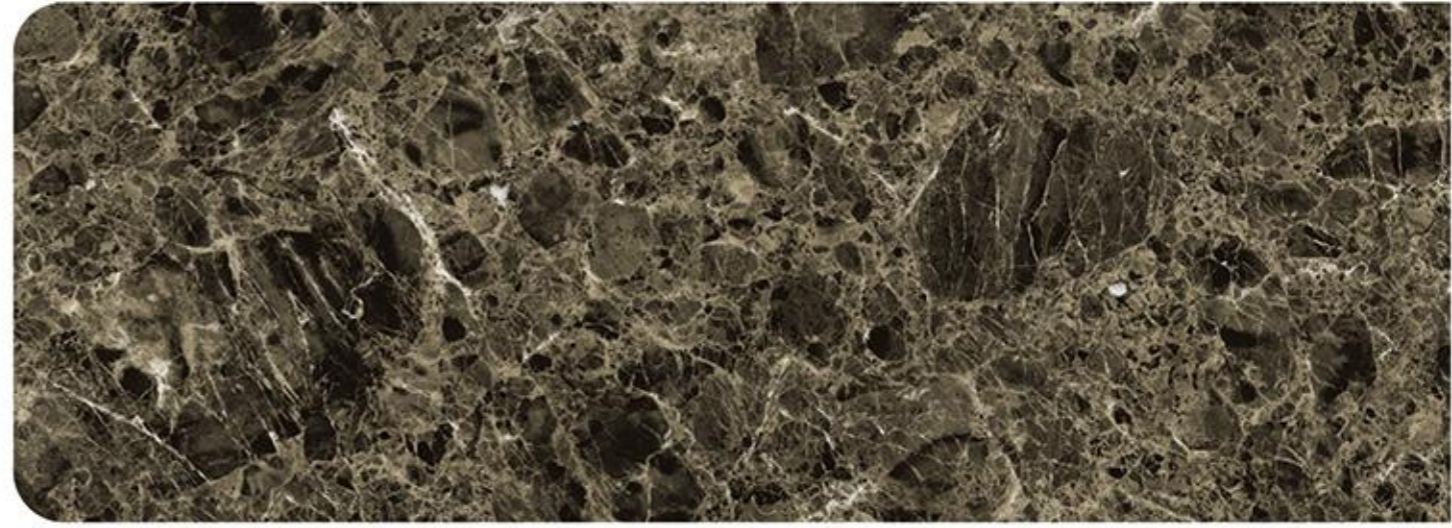
| WFMARBLE51 紫玉



| WFMARBLE6501 浅啡*



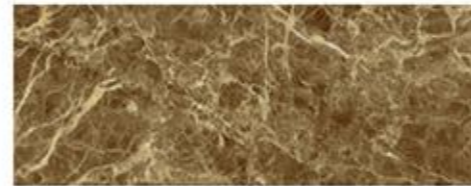
| WFMARBLE6901 白玫瑰*



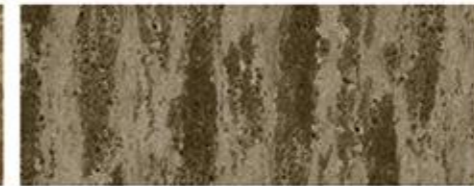
| WFMARBLE7101 深啡*



| WFMARBLE7601 水泥灰*



| WFMARBLE6601 金啡*



| WFMARBLE7201 黄金海岸*



| WFMARBLE7301 浅色大理石*



| WFMARBLE7401 水泥纹*



| WFMARBLE7501 洞石*

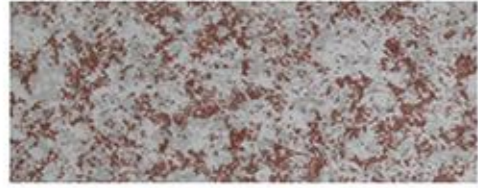


| WFMARBLE7701 加州米黄

根据用户需求可定制任意颜色 CUSTOMIZED COLORS AS PER CLIENTS' REQUIREMENTS.



Granite Series - 花岗岩



| WFGRANITE01 沙地雪花



| WFGRANITE03 粉红麻



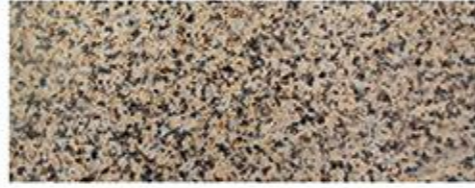
| WFGRANITE04 枫叶红



| WFGRANITE05 红花石



| WFGRANITE06 仿锈石



| WFGRANITE08 卡拉麦粒金



| WFGRANITE09 黄花石



| WFGRANITE0902 黄花石 *



| WFGRANITE11 印度红



| WFGRANITE12 黄金麻



| WFGRANITE13 黑米石



| WFGRANITE15 英国棕



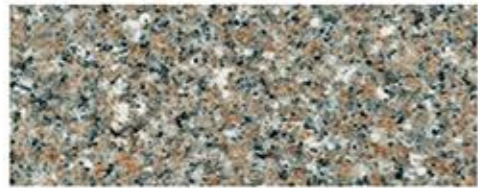
| WFGRANITE16 蓝米石



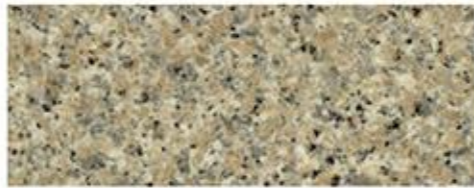
| WFGRANITE17 白麻石



| WFGRANITE18 安溪红



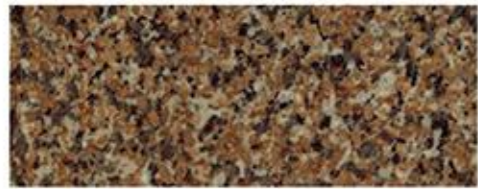
| WFGRANITE19 麻石



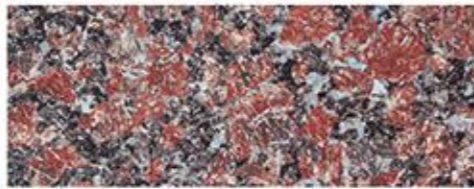
| WFGRANITE20 黄沙石



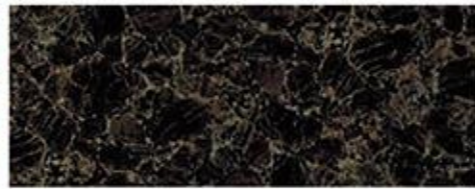
| WFGRANITE21 菊花黄



| WFGRANITE22 梅花麻



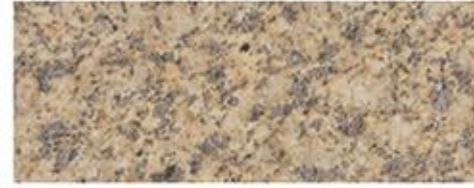
| WFGRANITE23 阿根廷红



| WFGRANITE25 新大啡珠



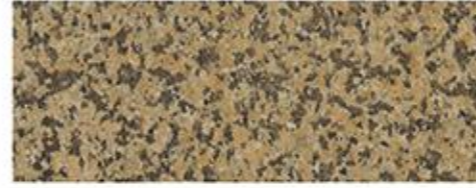
| WFGRANITE26 芝麻白



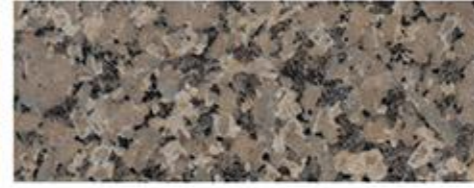
| WFGRANITE27 墨绿金麻



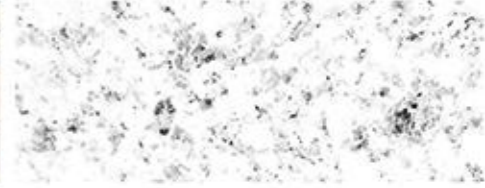
| WFGRANITE28 灰麻石



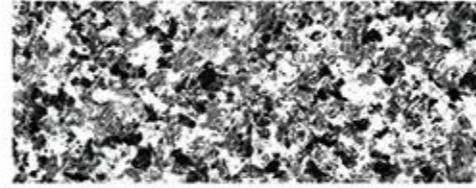
| WFGRANITE29 黄麻石



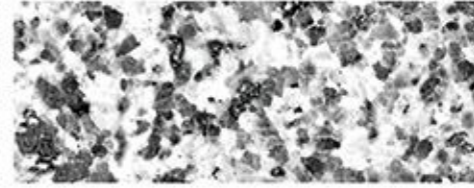
| WFGRANITE30 灰黑麻



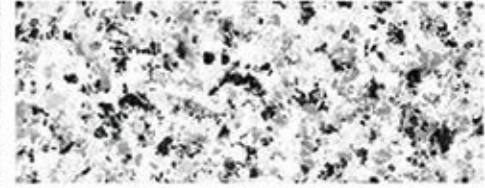
| WFGRANITE3201 *



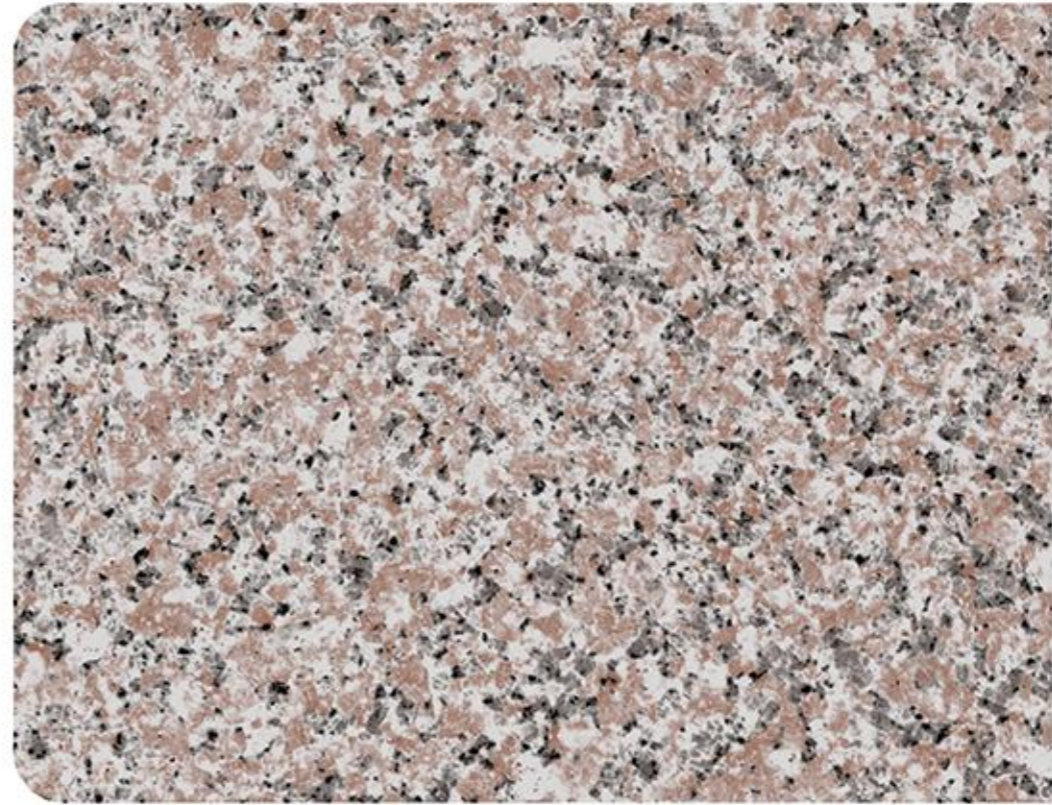
| WFGRANITE3801 *



| WFGRANITE5401 *



| WFGRANITE6001 *



| WFGRANITE3001 浅红石 *



| WFGRANITE3002 浅黄石 *

根据用户需求可定制任意颜色 CUSTOMIZED COLORS AS PER CLIENTS' REQUIREMENTS.

木纹系列
WOOD SERIES

砖纹系列
BRICK SERIES

大理石系列
MARBLE SERIES

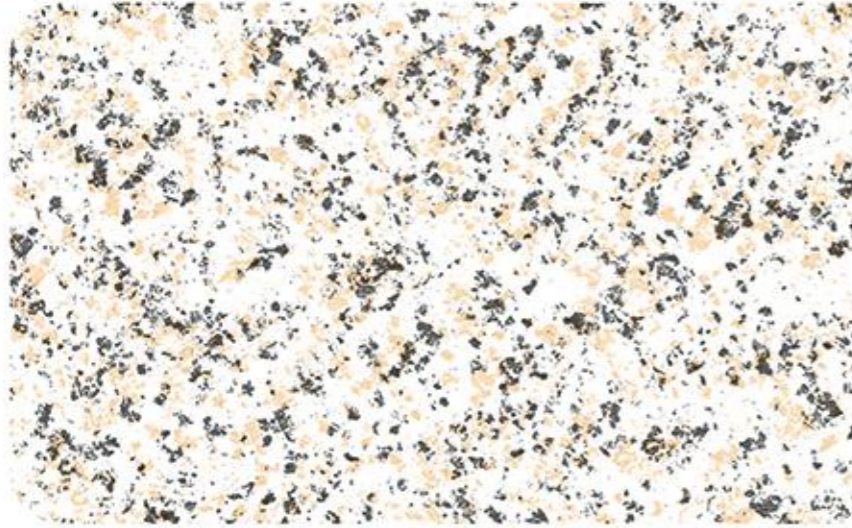
花岗岩系列
GRANITE SERIES

迷彩系列
CAMOUFLAGE SERIES

覆膜系列
LAMINATED SERIES

特殊花色
SPECIAL COLOR

特殊效果
SPECIAL EFFECT



| WFGRANITE3101 黄黑石 *



| WFGRANITE3301 浅麻石 *



| WFGRANITE3901 *



| WFGRANITE4001 *



| WFGRANITE3201 黄金钻 *



| WFGRANITE3501 *



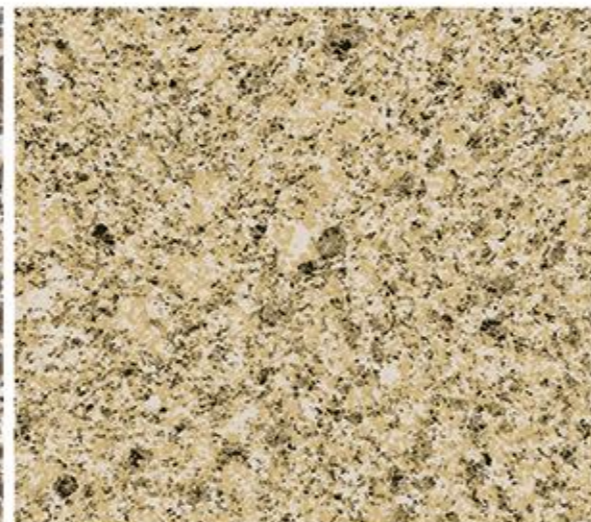
| WFGRANITE5101 *



| WFGRANITE5201 *



| WFGRANITE3601 卡麦黄仿石纹 *



| WFGRANITE3701 米黄石 *



| WFGRANITE5302 *



| WFGRANITE5501 *

根据用户需求可定制任意颜色 CUSTOMIZED COLORS AS PER CLIENTS' REQUIREMENTS.

木纹系列
WOOD SERIES

砖纹系列
BRICK SERIES

大理石系列
MARBLE SERIES

花岗岩系列
GRANITE SERIES

迷彩系列
CAMOUFLAGE SERIES

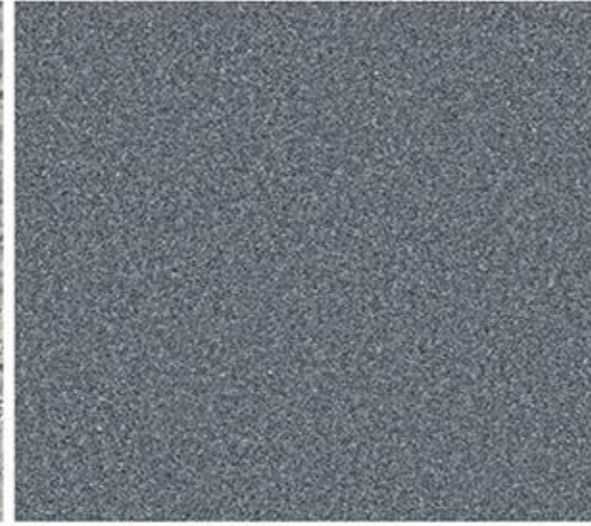
覆膜系列
LAMINATED SERIES

特殊花色
SPECIAL COLOR

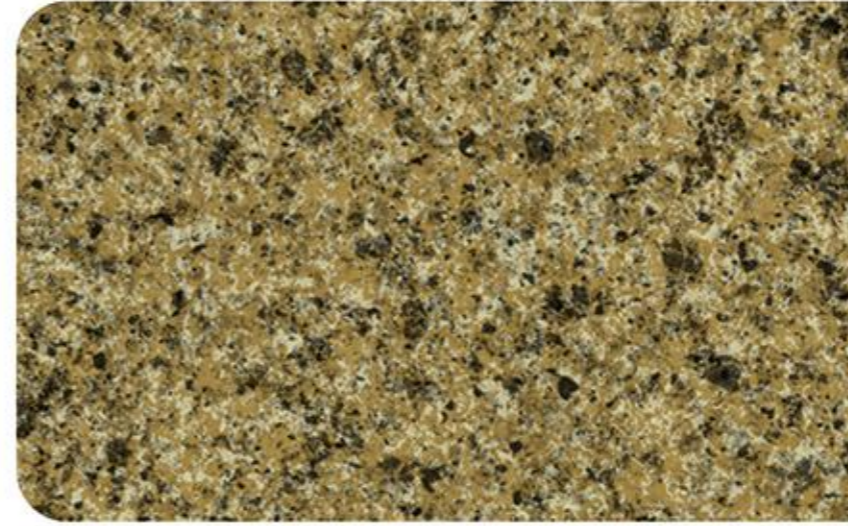
特殊效果
SPECIAL EFFECT



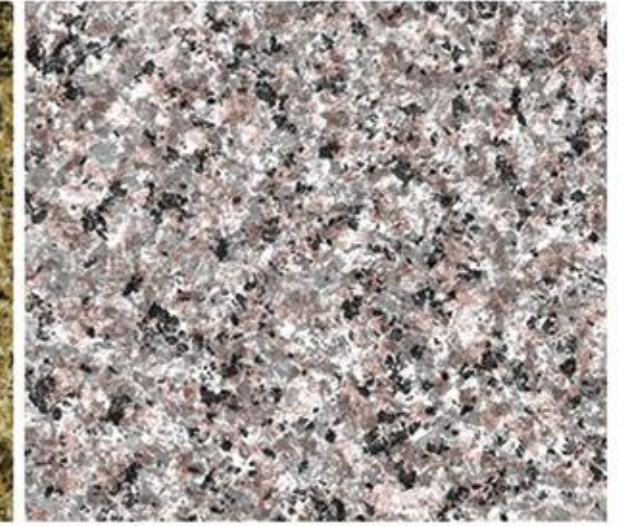
| WFGRANITE5601 珍珠兰 *



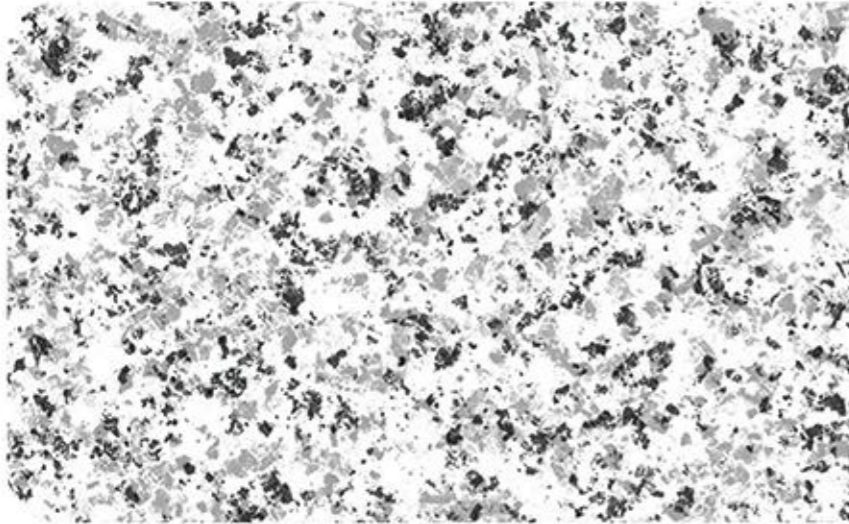
| WFGRANITE5701 黑色芝麻石 *



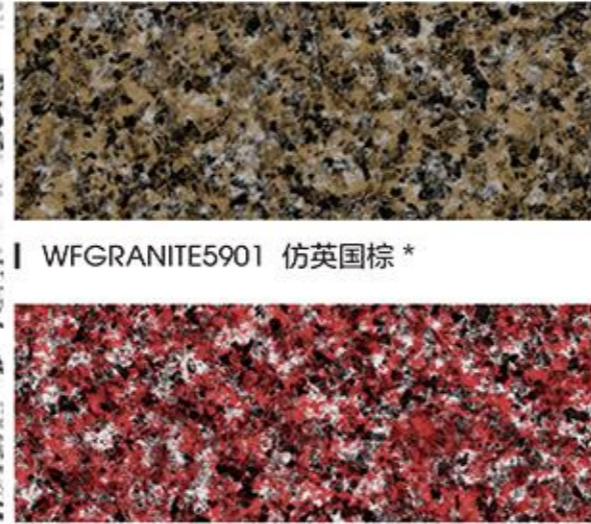
| WFGRANITE6301 黄锈石 *



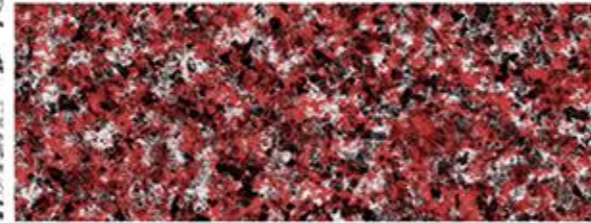
| WFGRANITE6401 珍珠红 *



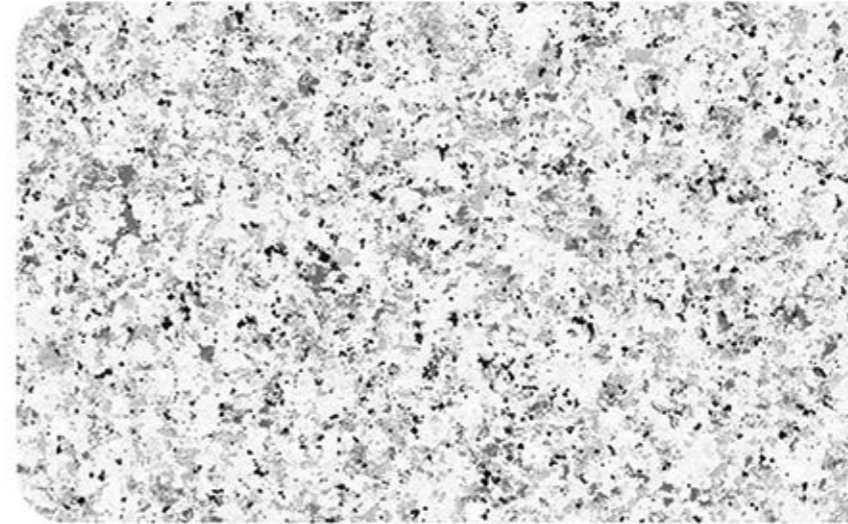
| WFGRANITE5801 芝麻灰 *



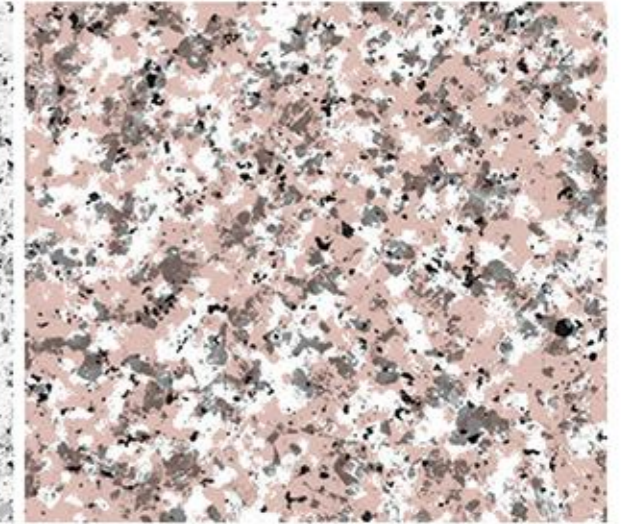
| WFGRANITE5901 仿英国棕 *



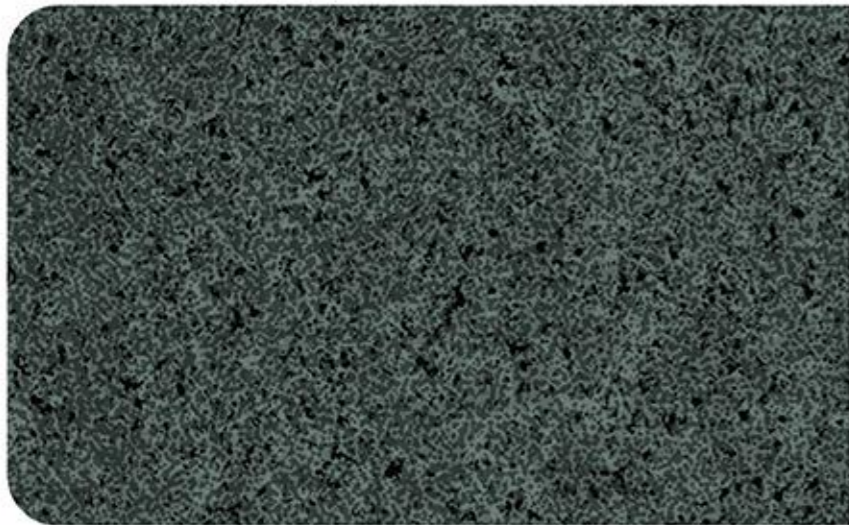
| WFGRANITE5902 贵妃红 *



| WFGRANITE6501 加州白麻 *



| WFGRANITE6601 五莲红 *



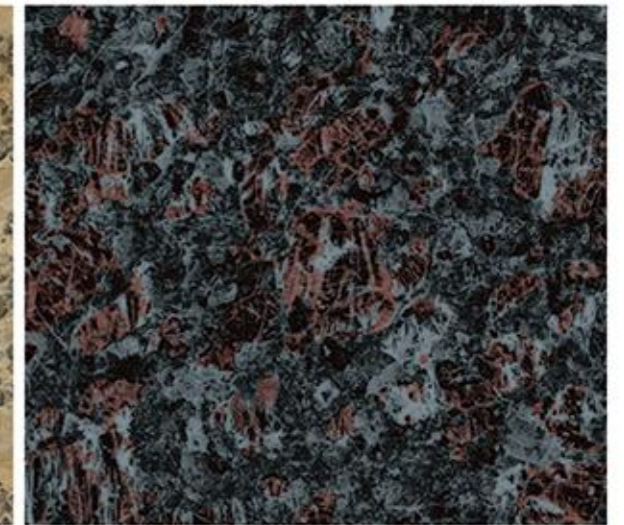
| WFGRANITE6101 黑钻 *



| WFGRANITE6201 灰麻 *



| WFGRANITE6701 *



| WFGRANITE15-N 英国棕 *

根据用户需求可定制任意颜色 CUSTOMIZED COLORS AS PER CLIENTS' REQUIREMENTS.

木纹系列
WOOD SERIES

砖纹系列
BRICK SERIES

大理石系列
MARBLE SERIES

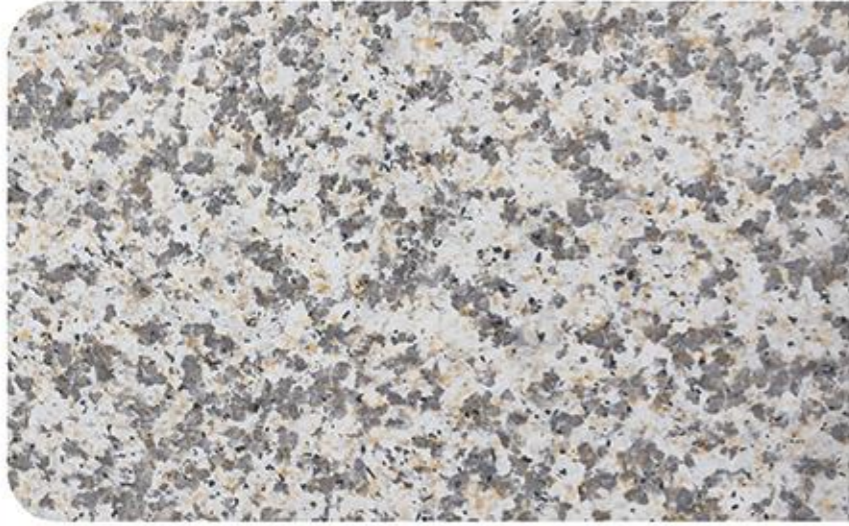
花岗岩系列
GRANITE SERIES

迷彩系列
CAMOUFLAGE SERIES

覆膜系列
LAMINATED SERIES

特殊花色
SPECIAL COLOR

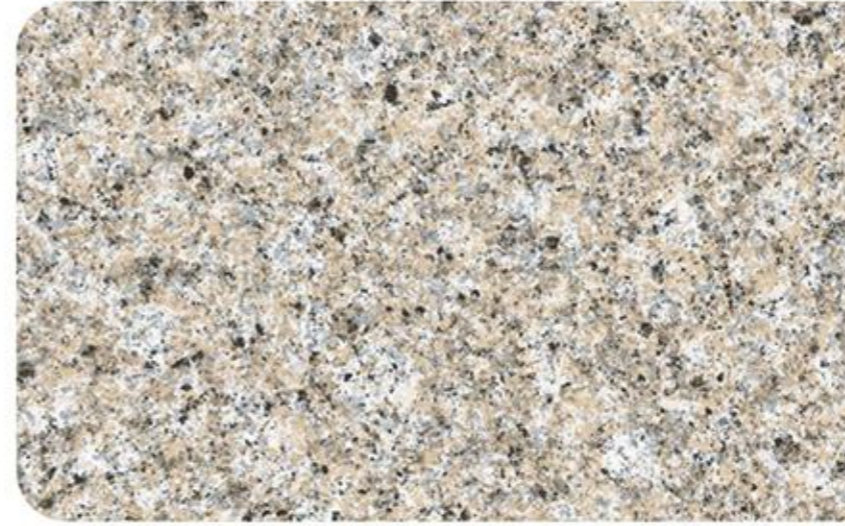
特殊效果
SPECIAL EFFECT



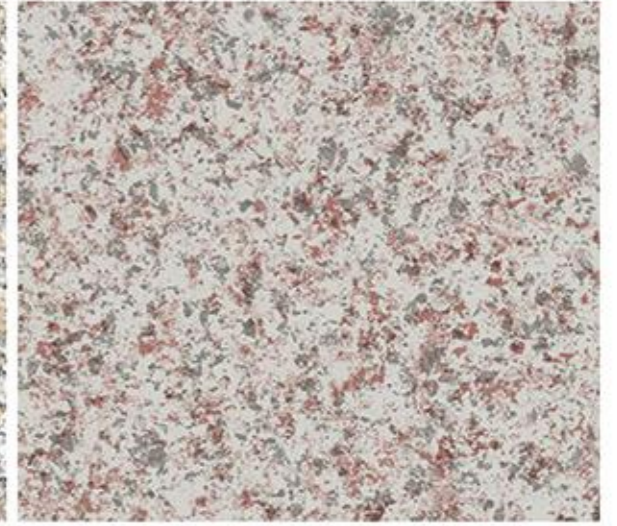
| WFGRANITE6901 黄金麻 *



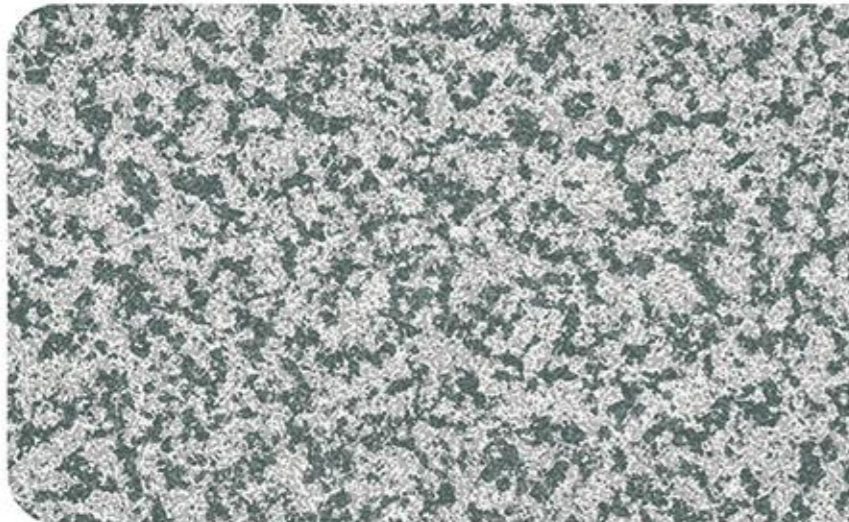
| WFGRANITE7001 *



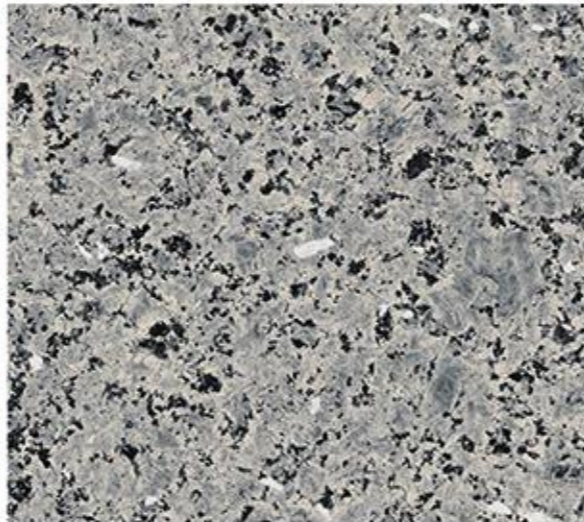
| WFGRANITE7501 *



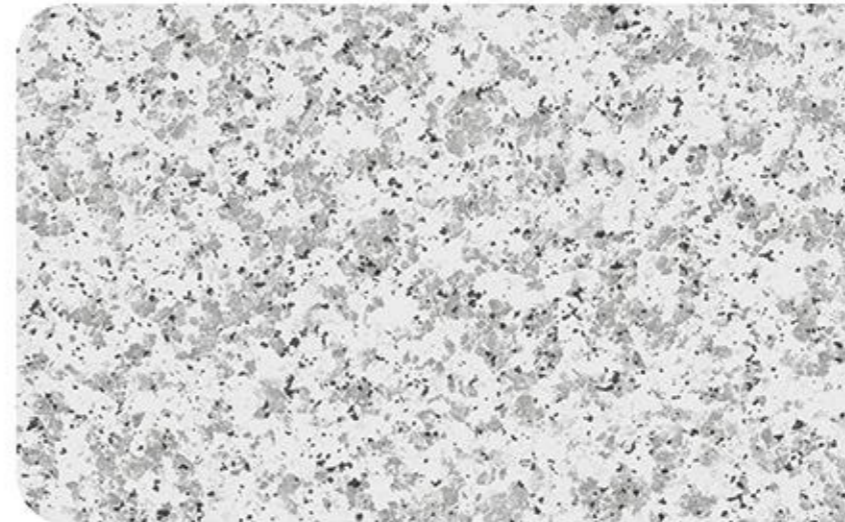
| WFGRANITE7601 *



| WFGRANITE7101 *



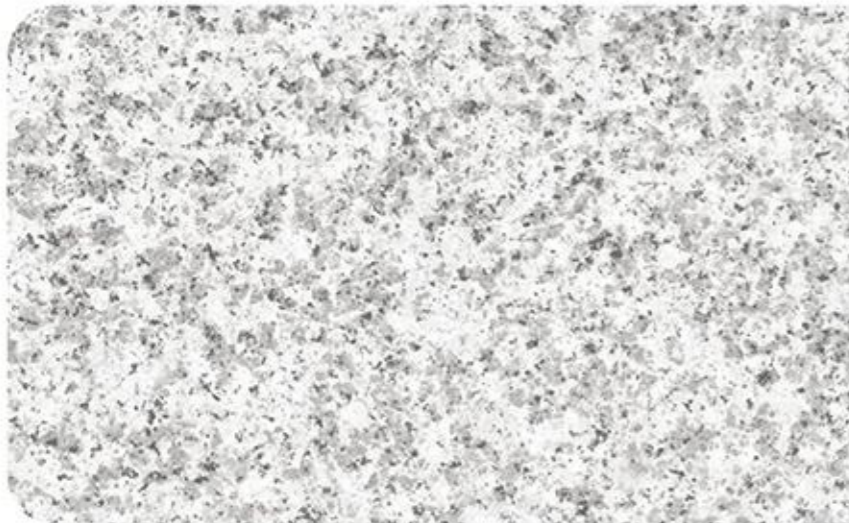
| WFGRANITE7201 蓝眼睛 *



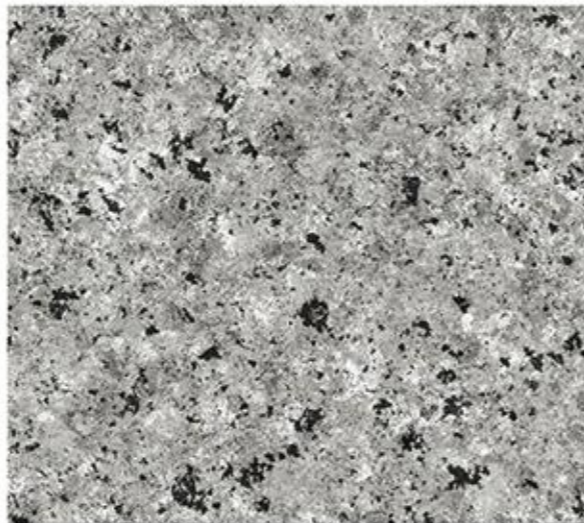
| WFGRANITE7701 *



| WFGRANITE7801 葡萄牙米黄 *



| WFGRANITE7301 *



| WFGRANITE7401 *



| WFGRANITE7901 *



| WFGRANITE8001 *

根据用户需求可定制任意颜色 CUSTOMIZED COLORS AS PER CLIENTS' REQUIREMENTS.

木纹系列
WOOD SERIES

砖纹系列
BRICK SERIES

大理石系列
MARBLE SERIES

花岗岩系列
GRANITE SERIES

迷彩系列
CAMOUFLAGE SERIES

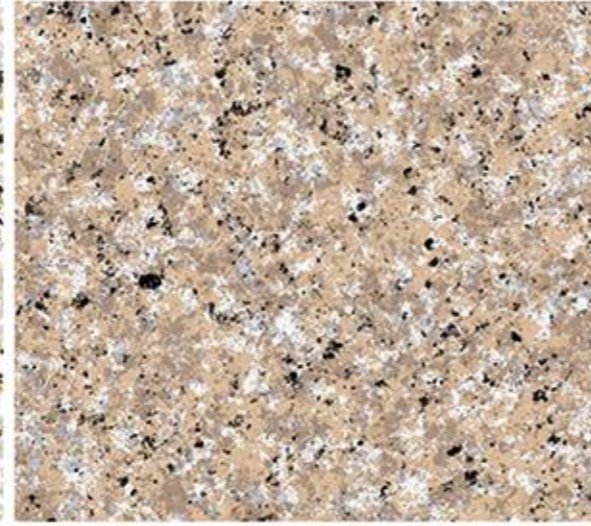
覆膜系列
LAMINATED SERIES

特殊花色
SPECIAL COLOR

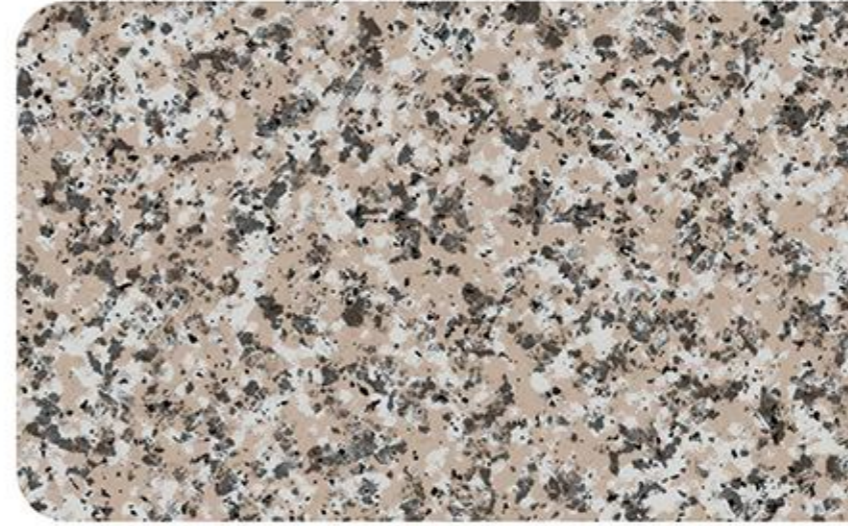
特殊效果
SPECIAL EFFECT



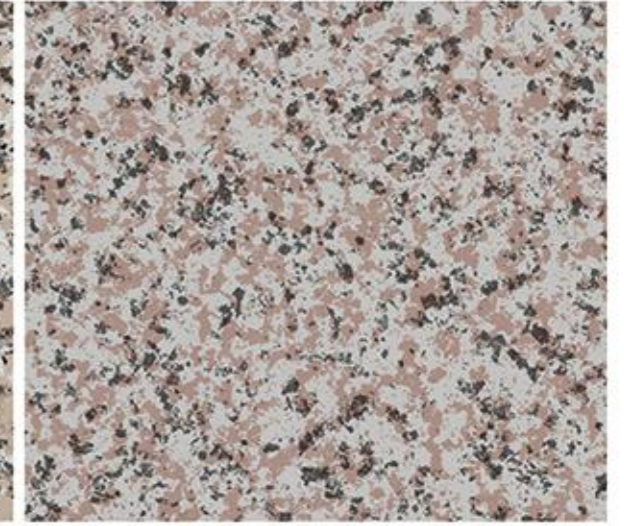
| WFGRANITE8101 *



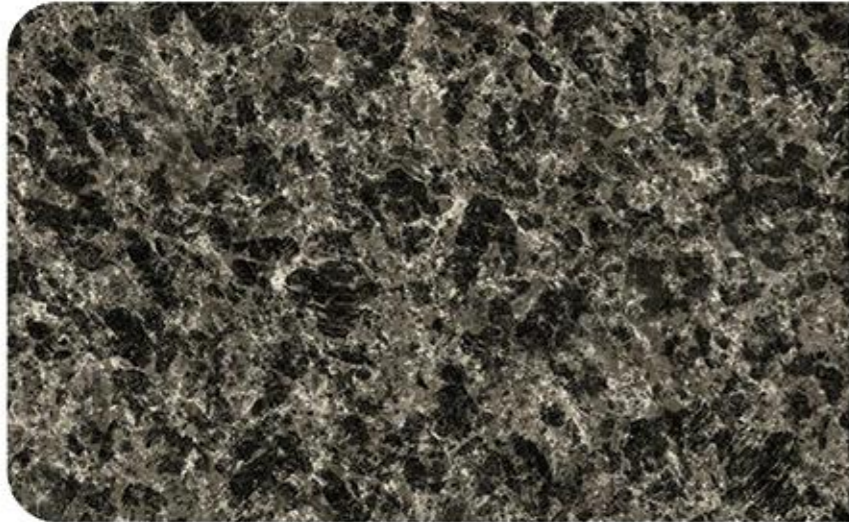
| WFGRANITE8201 *



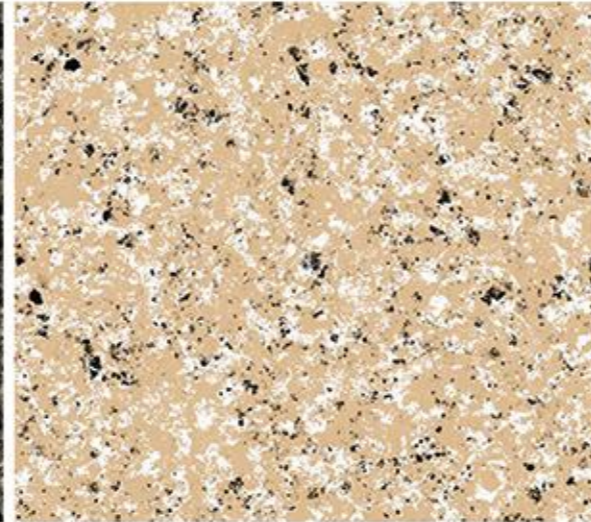
| WFGRANITE8701 *



| WFGRANITE8801 *



| WFGRANITE8301 *



| WFGRANITE8401 蓝眼睛 *



| WFGRANITE8901 *



| WFGRANITE8501 *



| WFGRANITE8601 *



| WFGRANITE9001 *

根据用户需求可定制任意颜色 CUSTOMIZED COLORS AS PER CLIENTS' REQUIREMENTS.

木纹系列 WOOD SERIES	砖纹系列 BRICK SERIES	大理石系列 MARBLE SERIES	花岗岩系列 GRANITE SERIES	迷彩系列 CAMOUFLAGE SERIES	覆膜系列 LAMINATED SERIES	特殊花色 SPECIAL COLOR	特殊效果 SPECIAL EFFECT
---------------------	----------------------	------------------------	-------------------------	---------------------------	--------------------------	-----------------------	------------------------

Camouflage Series - 迷彩



| WFCM0801 陆军迷彩 *



| WFCM0802 空军迷彩 *



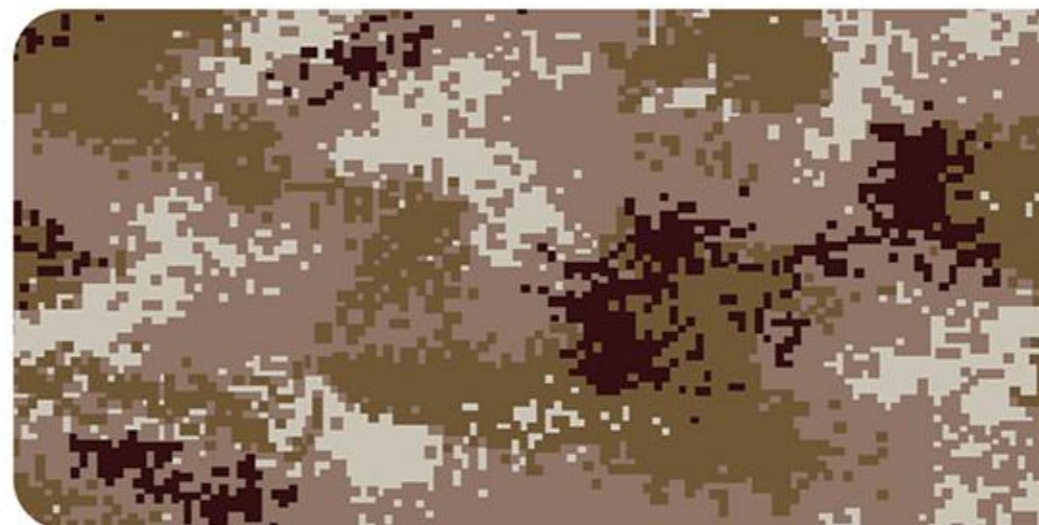
| WFCM0901 *



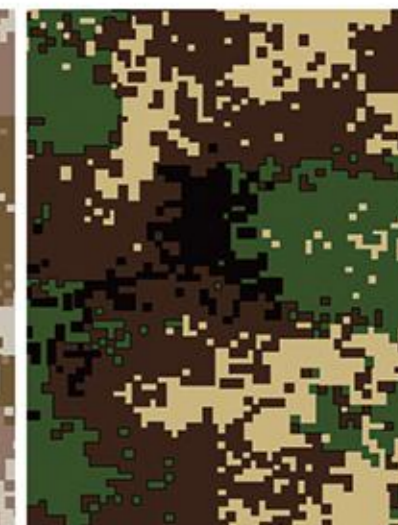
| WFCM0803 *



| WFCM0805 *



| WFCM502 荒漠迷彩 *



| WFCM503 数码迷彩 *



| WFCM2 大方格迷彩 *

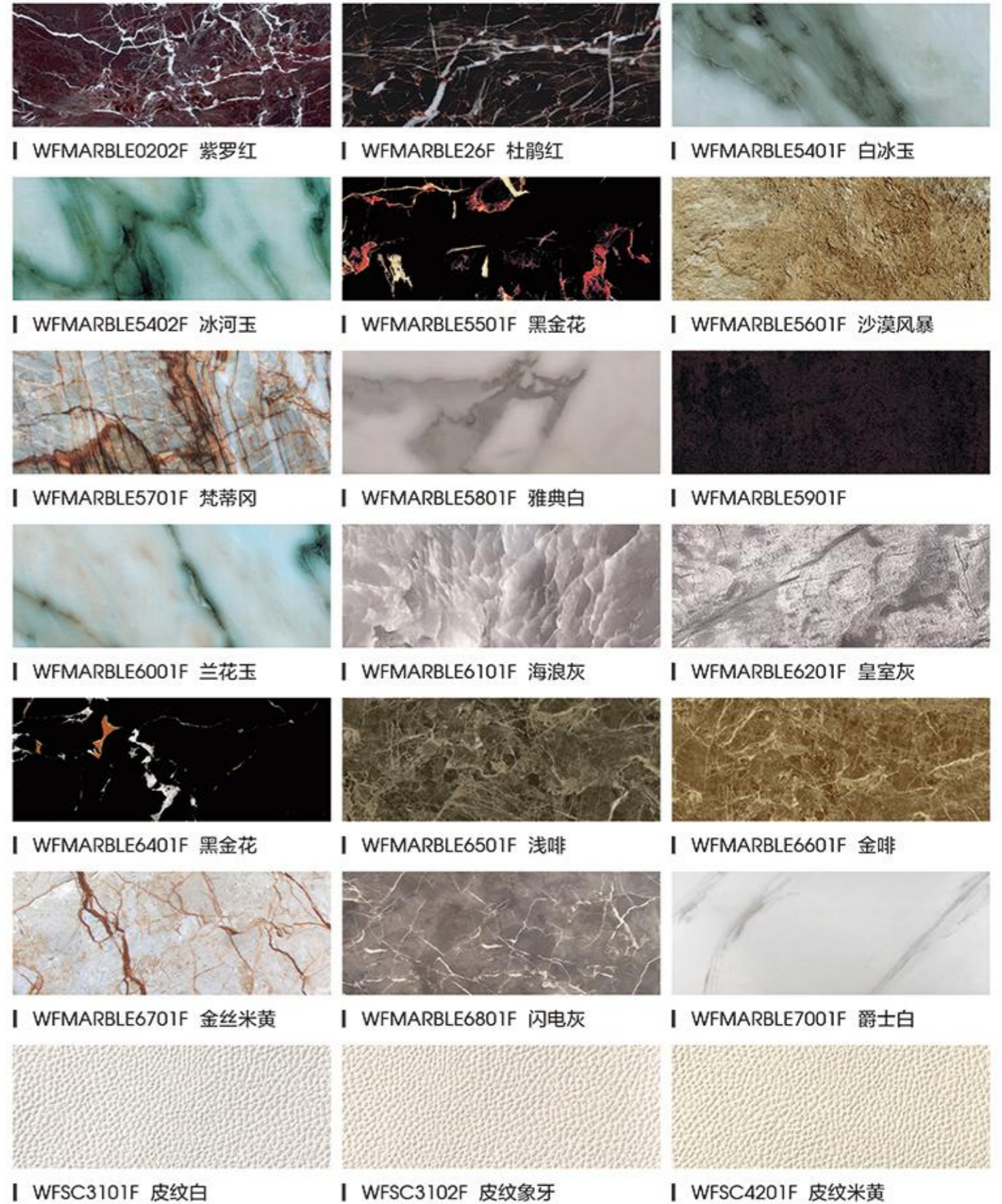


| WFCM504 数码迷彩 *



| WFCM505 数码迷彩 *

Laminated Series - 覆膜



根据用户需求可定制任意颜色 CUSTOMIZED COLORS AS PER CLIENTS' REQUIREMENTS.



Laminated Series - 覆膜



| WFYH0601F 枯木逢春



| WFYH0701F 欧花



| WFYH1001F 布纹



| WFYH1101F 欧花



| WFYH1201F 金碧辉煌



| WFYH1301F 幻丝



| WFYH1401F 流光溢彩



| WFYH1501F 立体布纹



| WFYH1601F 韩国布纹



| WFYH1701F 布纹



| WFYH1801F



| WFYH2001F 古典贝斯特



| WFYH2101F 草编金



| WFYH2201F 草编香槟色



| WFYH2801F 布纹



| WFYH3001F 棕皮革



| WFYH3101F 银丝



| WFYH3201F 树榴



| WFYH3301F 欧花



| WFWOOD7001F 美洲橡木



| WFWOOD7101F 柚木



| WFWOOD7401F



| WFWOOD7601F



| WFWOOD7701F



| WFWOOD7801F



| WFWOOD8001F



| WFWOOD8101F 相思木



| WFWOOD8601F 同步橡木



| WFWOOD8701F



| WFMARBLE7901F 鱼肚白



| WFYH3701F 树皮



| WFYH3801F 黑色皮纹



| WFSY5301F 黑色颗粒



| WFMARBLE7801F



| WFLS1301F 金铜拉丝



| WFWOOD8201M



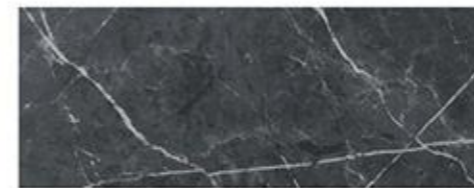
| WFSY-01M



| WFSY-02M



| WFSY-03M



| WFSY-05M



| WFSY-06M



| WFSY-07M

根据用户需求可定制任意颜色 CUSTOMIZED COLORS AS PER CLIENTS' REQUIREMENTS.

木纹系列 WOOD SERIES	砖纹系列 BRICK SERIES	大理石系列 MARBLE SERIES	花岗岩系列 GRANITE SERIES	迷彩系列 CAMOUFLAGE SERIES	覆膜系列 LAMINATED SERIES	特殊花色 SPECIAL COLOR	特殊效果 SPECIAL EFFECT
---------------------	----------------------	------------------------	-------------------------	---------------------------	--------------------------	-----------------------	------------------------

Special color - 特殊图案



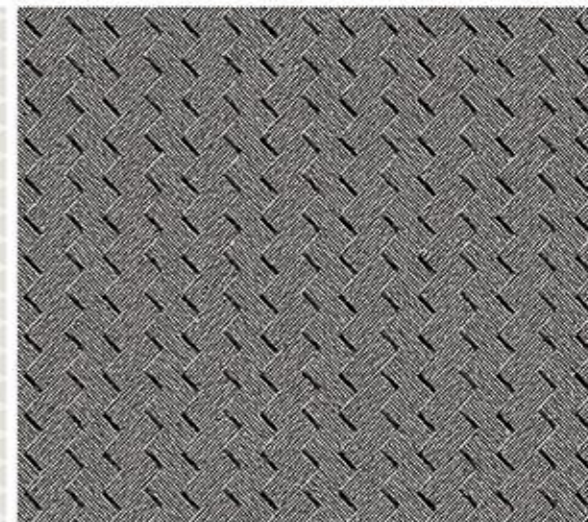
| WFYH0101 蓝天白鸽 *



| WFYH0201 仿铜效果 *



| WFYH2301 菱形格子 *



| WFYH2401 碳纤维 *



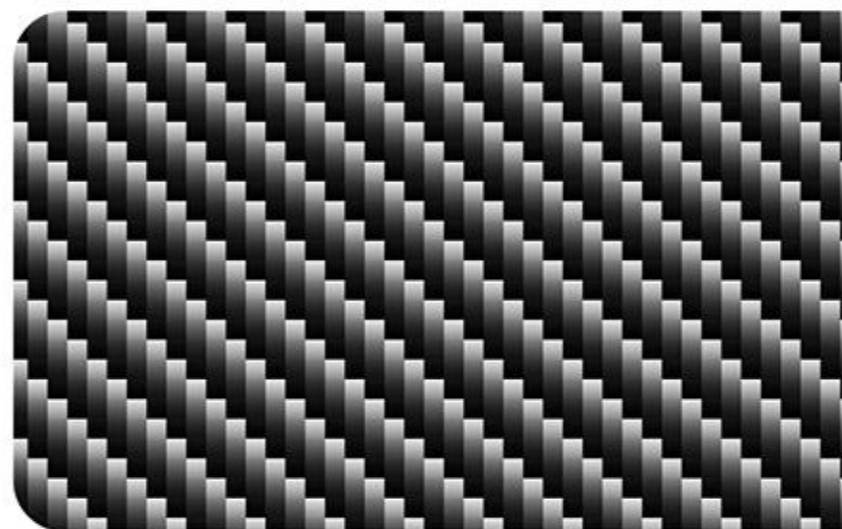
| WFYH0301 欧花 *



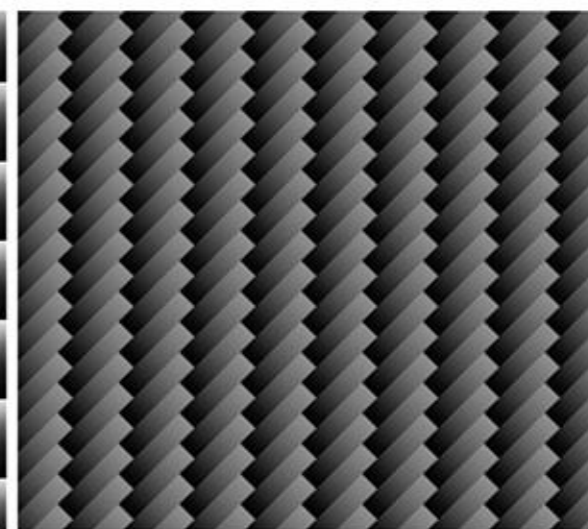
| WFYH0401 *



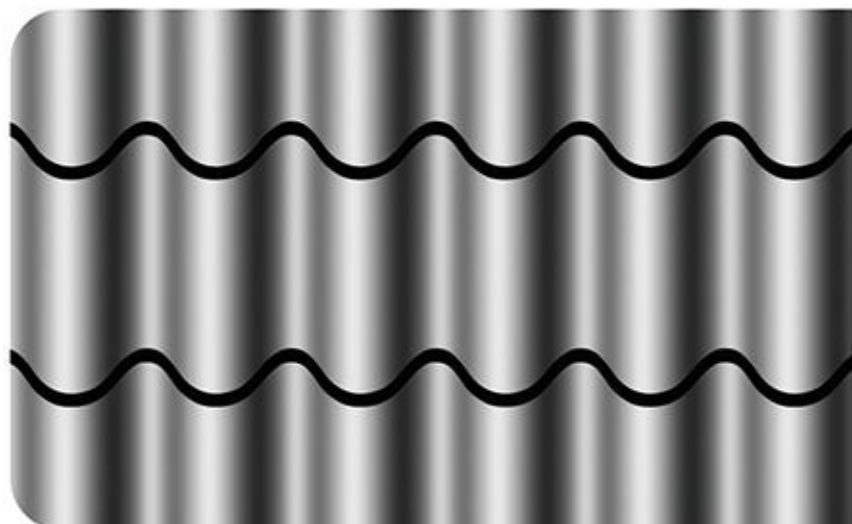
| WFYH0501 *



| WFYH2501 碳纤维 *



| WFYH2601 碳纤维 *



| WFYH0801 单色瓦纹 *



| WFYH1901 花开富贵 *



| WFYH2701 布纹 *

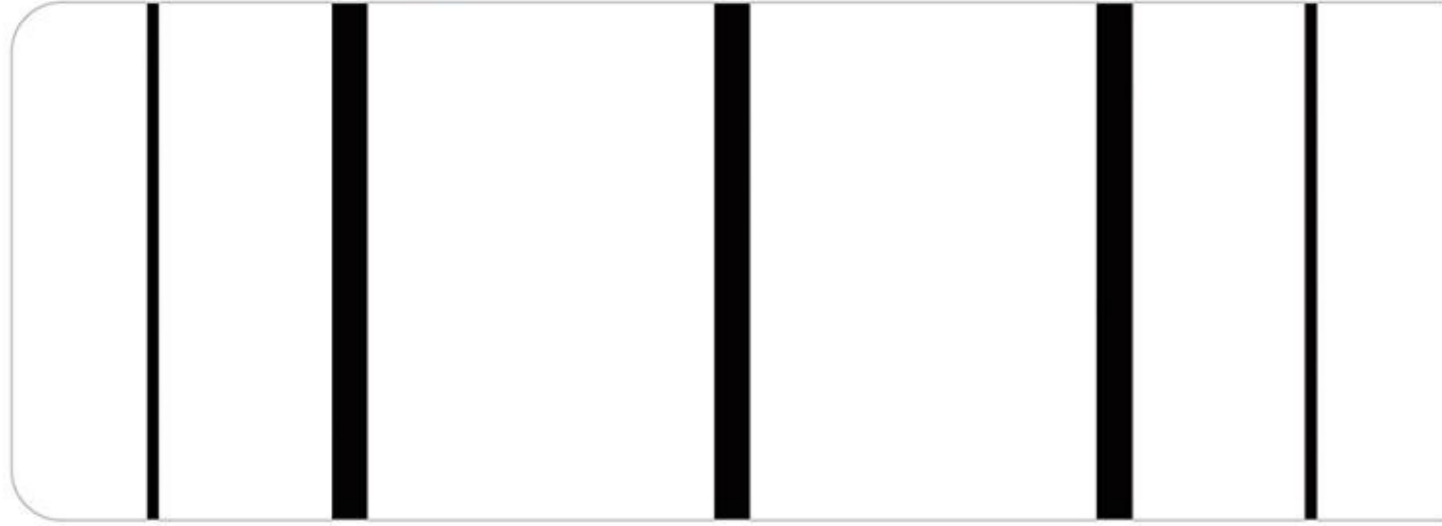


| WFYH3501 三角形格子 *

根据用户需求可定制任意颜色 CUSTOMIZED COLORS AS PER CLIENTS' REQUIREMENTS.



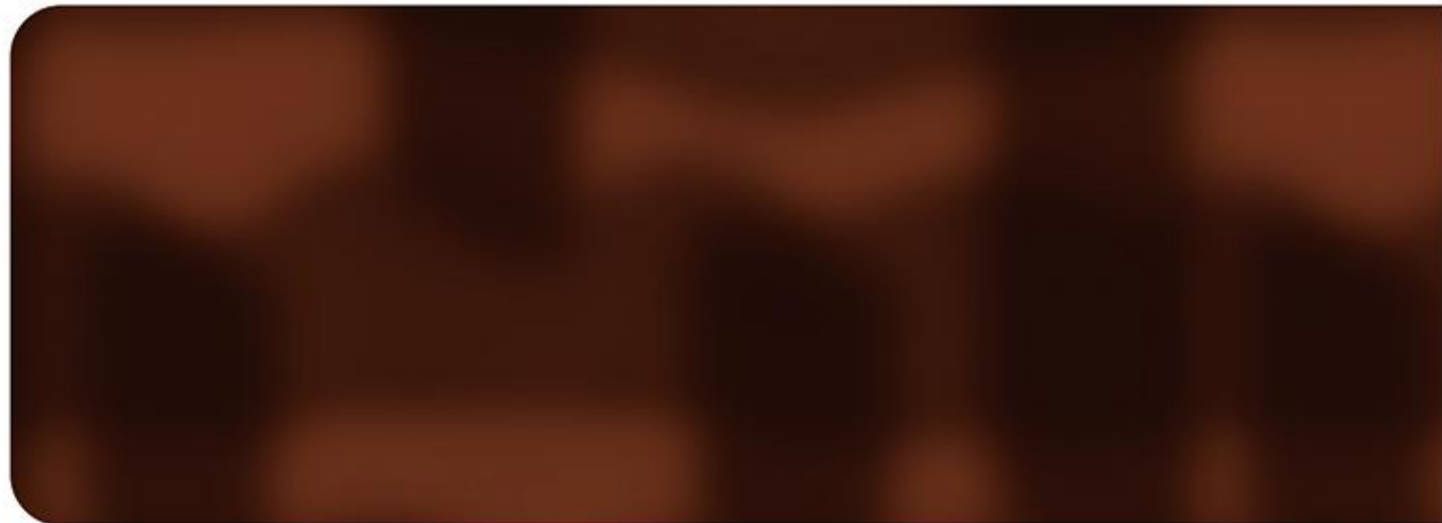
Special color - 特殊图案



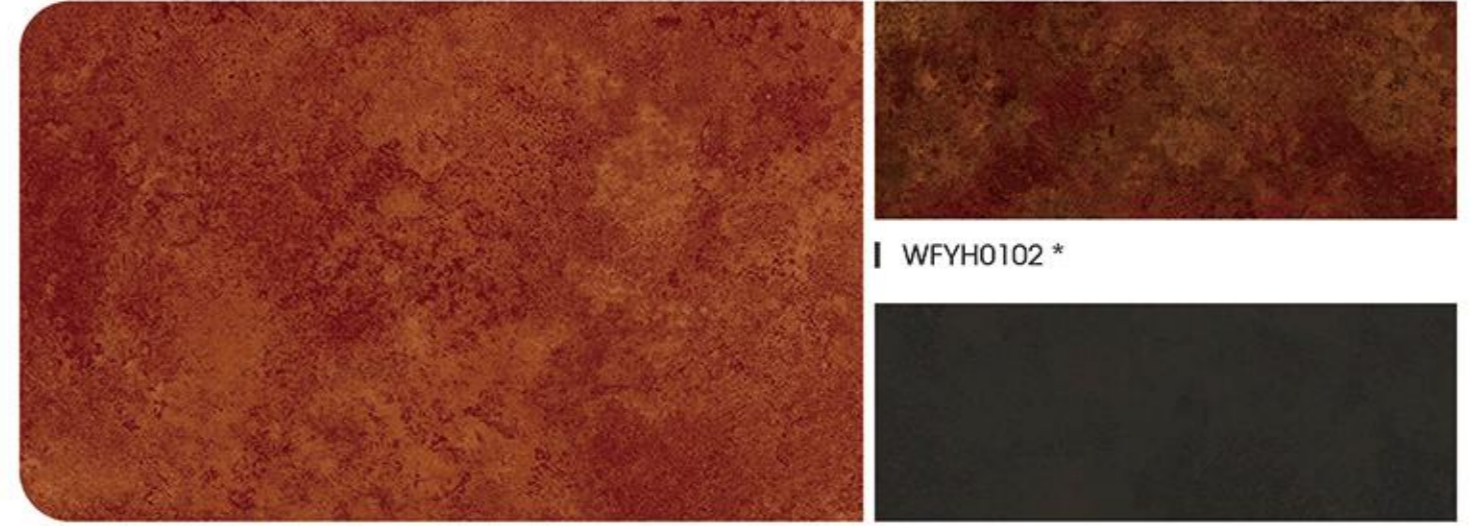
| WFYH3601 *



| WFYH3901 瓦纹 *

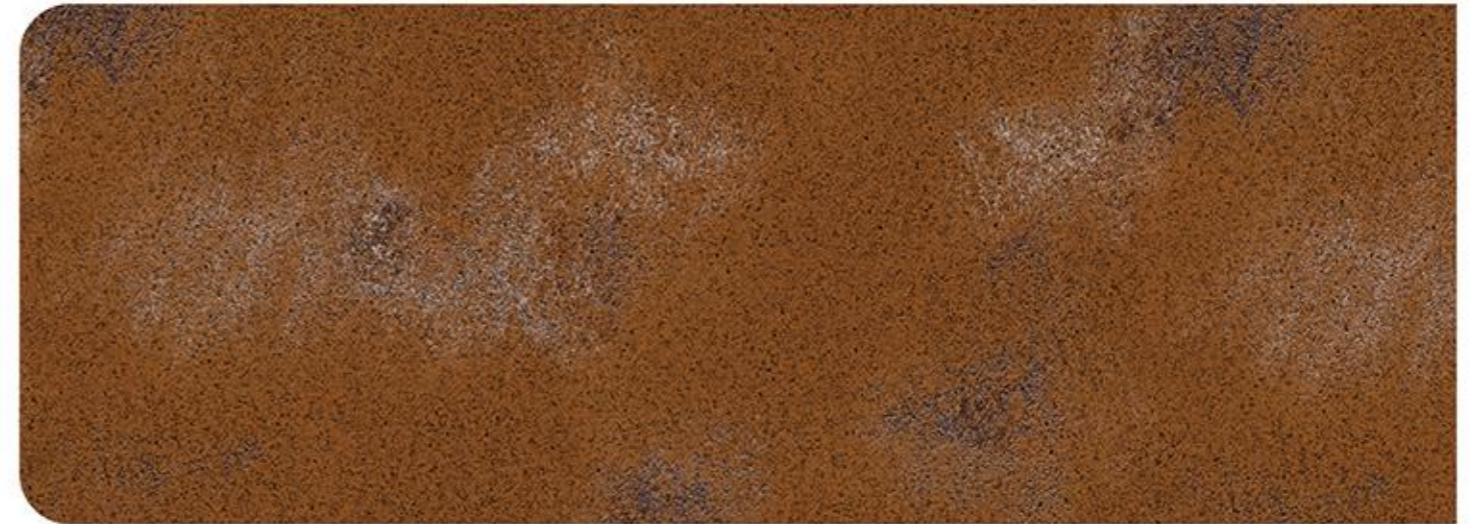


| WFYH4001 瓦纹 *



| WFRUST0101 仿锈石 *

| WFYH0102 *
| WFYH0103 *



| WFRUST0201 仿锈石 *

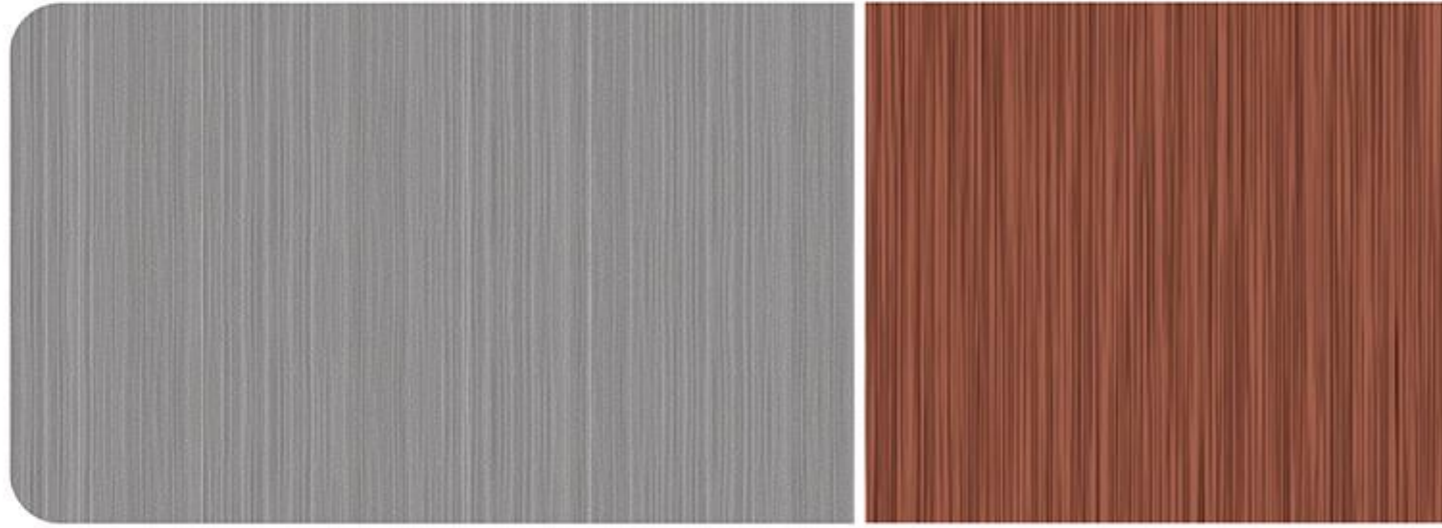


| WFRUST0301 仿锈石 *

根据用户需求可定制任意颜色 CUSTOMIZED COLORS AS PER CLIENTS' REQUIREMENTS.

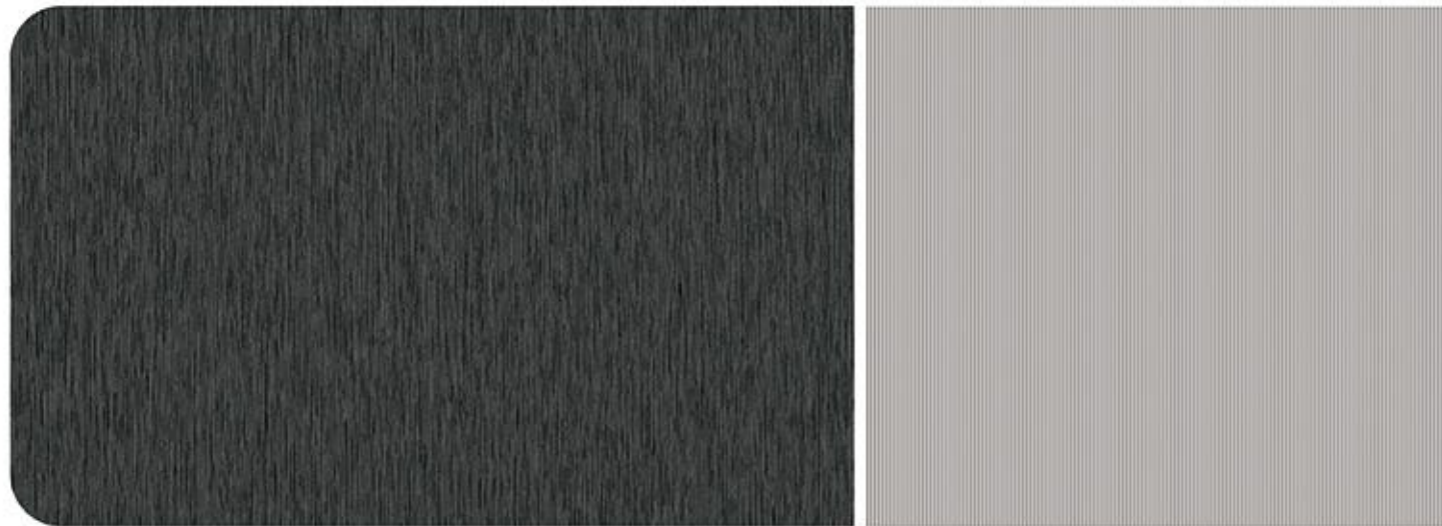


Special effect - 特殊效果



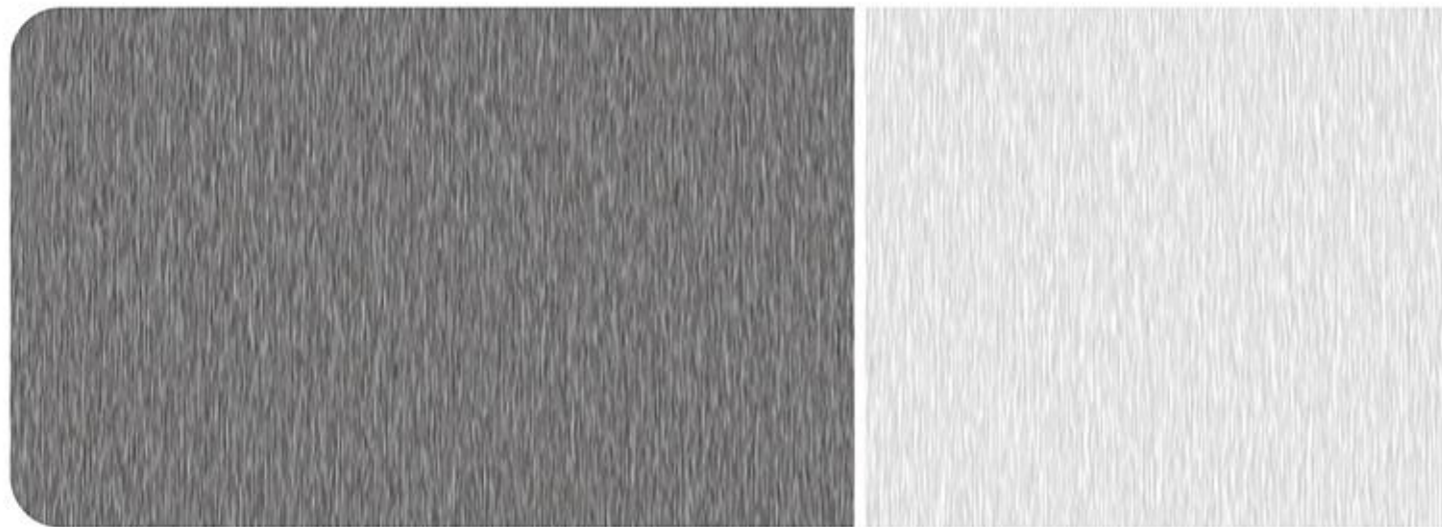
| WFLS0501 银拉丝 *

| WFLS1101 红铜拉丝 *



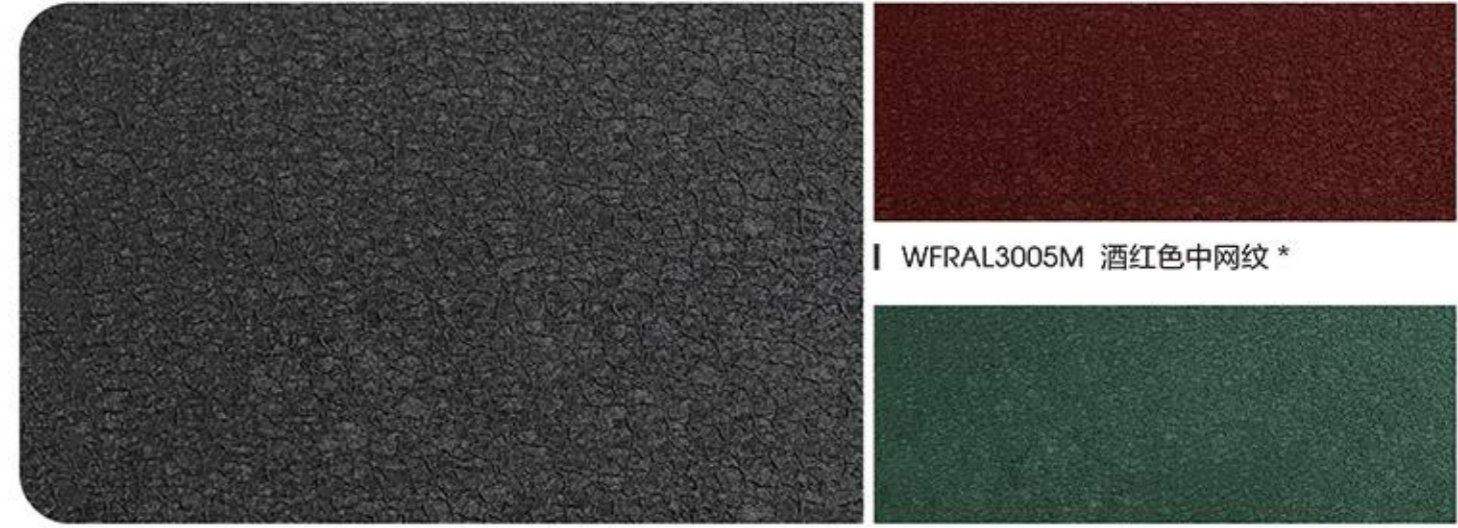
| WFLS0801 双色拉丝 *

| WFLS1201 银拉丝 *



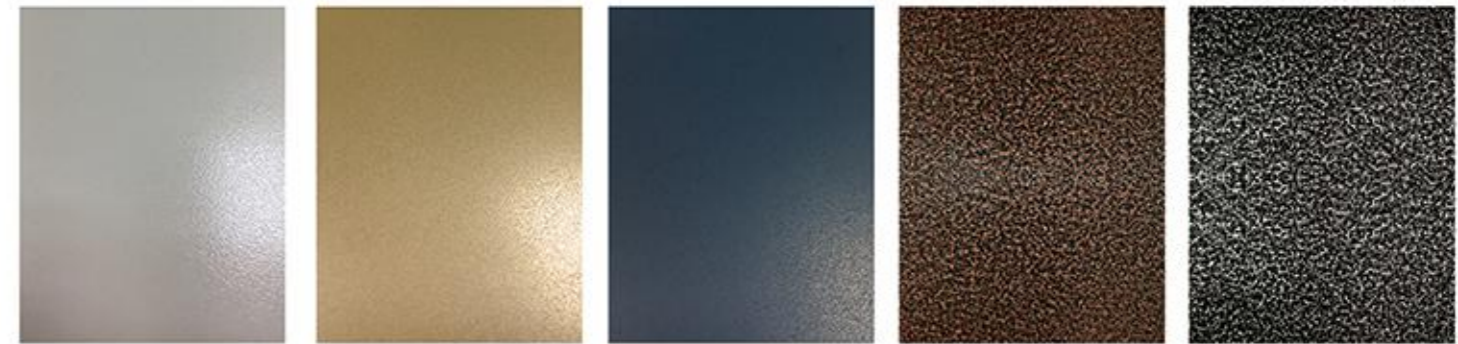
| WFLS0901 单色拉丝 *

| WFLS0902 银拉丝 *



| WFRAL7024M 石墨灰大网纹 *

| WFRAL3005M 酒红色中网纹 *



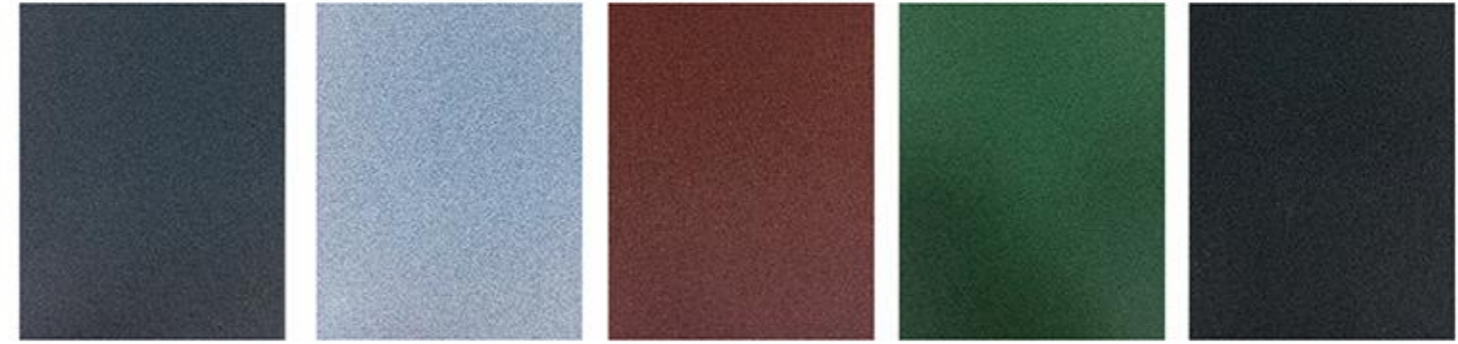
| WFPARTICLE0101 颗粒

| WFPARTICLE0201 颗粒

| WFPARTICLE0301 颗粒

| WFHAMMER0101 垂纹

| WFHAMMER0201 垂纹



| WFWRINKLE0101 绒面

| WFWRINKLE0201 绒面

| WFWRINKLE0301 绒面

| WFWRINKLE0401 绒面

| WFWRINKLE0501 绒面



| WFCHAMELEON0101

| WFCHAMELEON0201

| WFCHAMELEON0301

| WFCHAMELEON0401

| WFCHAMELEON0501

Test Report - 检测报告

SGS MA CNAS Test Report for Building Materials. The report includes a header with logos, a title '检验报告 TEST REPORT', and a table of test results. A photograph of a material sample is included in the center. The bottom section contains a detailed table of test parameters and results.

Practical Patents - 实用新型专利

A grid of 14 Utility Patent Certificates (实用新型专利证书) issued by the State Intellectual Property Administration (SIPO). Each certificate is for a different patent, with the name '申仁南' (Shen Renan) listed as the inventor. The certificates are arranged in two rows of seven.

MA CNAS Test Report for Building Materials. This report includes a header with logos, a title '检验报告 TEST REPORT', and a table of test results. It also features a '说明 Notice' section on the right side. The bottom section contains a detailed table of test parameters and results.

A grid of 14 Utility Patent Certificates (实用新型专利证书) issued by the State Intellectual Property Administration (SIPO). Each certificate is for a different patent, with the name '申仁南' (Shen Renan) listed as the inventor. The certificates are arranged in two rows of seven.

MA CNAS Test Report for Building Materials. This report includes a header with logos, a title '检验报告 TEST REPORT', and a table of test results. It also features a '说明 Notice' section on the right side. The bottom section contains a detailed table of test parameters and results.

A grid of 14 Utility Patent Certificates (实用新型专利证书) issued by the State Intellectual Property Administration (SIPO). Each certificate is for a different patent, with the name '申仁南' (Shen Renan) listed as the inventor. The certificates are arranged in two rows of seven.