

2019

Dayue Precision Technology Co., Ltd.

大譽精工金屬科技（東莞）有限公司

Corporate brochure

(宣傳冊)

Dayue Precision Technology Co., Ltd.

大譽精工金屬科技（東莞）有限公司；

Chengdu Baisan Parts Co., Ltd

成都白參零部件有限公司；

Sichuan zhanguan tungsten carbide manufacturing Co., Ltd

四川佔冠硬質合金有限公司



Solve all problems in precision parts manufacturing

解決一切精密零部件製造難題

Machining

Mould parts, Tungsten carbide, machine parts

目錄 /

CONTENT

- About us (關於我們) 01
- VR Panoramic View Factory (VR全景看廠) 02
- Equipment List (設備清單) 03
- product list (產品目錄) 04
- Mold components (模具配件) 05
- Machined parts (機加工零件) 06
- Tungsten carbide tools (碳化鎢工具) 07
- Hydraulic components (液壓組件) 08
- Grinding components (研磨加工零件) 09
- Service (服務) 10
- Exhibition (展會) 11
- certificate (證書) 12

804807
71-7
CMX 1100 V

機械別
工具自動測量PG

工具自動測量PG

工具自動測量PG

工具自動測量PG

工具自動測量PG

工具自動測量PG

工具自動測量PG

工具自動測量PG

工具自動測量PG

工具自動測量PG

工具自動測量PG

工具自動測量PG

工具自動測量PG

工具自動測量PG

工具自動測量PG

工具自動測量PG

工具自動測量PG

工具自動測量PG

工具自動測量PG

工具自動測量PG

工具自動測量PG

工具自動測量PG

工具自動測量PG

工具自動測量PG

工具自動測量PG

工具自動測量PG

工具自動測量PG

工具自動測量PG

工具自動測量PG

工具自動測量PG

工具自動測量PG

工具自動測量PG

工具自動測量PG

工具自動測量PG

工具自動測量PG

工具自動測量PG

工具自動測量PG

工具自動測量PG

工具自動測量PG

工具自動測量PG

工具自動測量PG

工具自動測量PG

工具自動測量PG

工具自動測量PG

工具自動測量PG

工具自動測量PG

工具自動測量PG

工具自動測量PG

工具自動測量PG

工具自動測量PG

工具自動測量PG

工具自動測量PG

工具自動測量PG

工具自動測量PG

工具自動測量PG

工具自動測量PG

工具自動測量PG

工具自動測量PG

工具自動測量PG

工具自動測量PG

工具自動測量PG

工具自動測量PG

工具自動測量PG

工具自動測量PG

工具自動測量PG

工具自動測量PG

工具自動測量PG

工具自動測量PG

工具自動測量PG

工具自動測量PG

工具自動測量PG

工具自動測量PG

工具自動測量PG

工具自動測量PG

工具自動測量PG

工具自動測量PG

工具自動測量PG

工具自動測量PG

工具自動測量PG

工具自動測量PG

工具自動測量PG

工具自動測量PG

工具自動測量PG

工具自動測量PG

工具自動測量PG

工具自動測量PG

工具自動測量PG



ABOUT US | 關於我們

Dayue Precision Technology Co., Ltd. is a precision parts manufacturer.

We are good at one-to-one machining of workpieces according to drawings.

Solving all the manufacturing problems of precision parts is the core value of everyone at DAYUE. This is not just a slogan but an action.

In China, we can produce about 700 high-precision parts with different designs in a day. Our production centers are mainly located in Dongguan, Guangdong province, Guangzhou, Guangdong province and Chengdu, Sichuan province, so we can provide 24-48 hours of expedited work service.

大粵精工金屬科技（東莞）有限公司是一家精密零件製造商。

我們擅長按圖紙一對一加工工件。

解決所有，精密零件的製造問題是每個DAYUE人的核心價值觀。

在DAYUE，這不僅僅是一個口號，而是一個行動。

在中國，我們一天可以生產700多個不同設計的高精度零件。

我們的生產中心主要位於廣東省東莞和四川省成都市，因此我們可以提供24-48小時的快速工作服務。



VR全景工廠

- 解決所有精密零件製造難題



VR panoramic view factory

- Solve all precision parts manufacturing problems

A panoramic view of a modern manufacturing factory. The scene is filled with rows of industrial machinery, likely CNC machines, arranged in a long aisle. The floor is a bright green with yellow safety lines. Several workers in white uniforms are visible, some operating the machines and others walking through the aisles. The ceiling is high with numerous bright lights and air conditioning units. The overall atmosphere is clean, organized, and industrious.

VR panoramic view factory

-Solve all precision parts manufacturing problems



VR panoramic view factory

-Solve all precision parts manufacturing problems



Five-axis CNC lathe/五轴CNC机床



Vertical Machining Center/立式加工中心



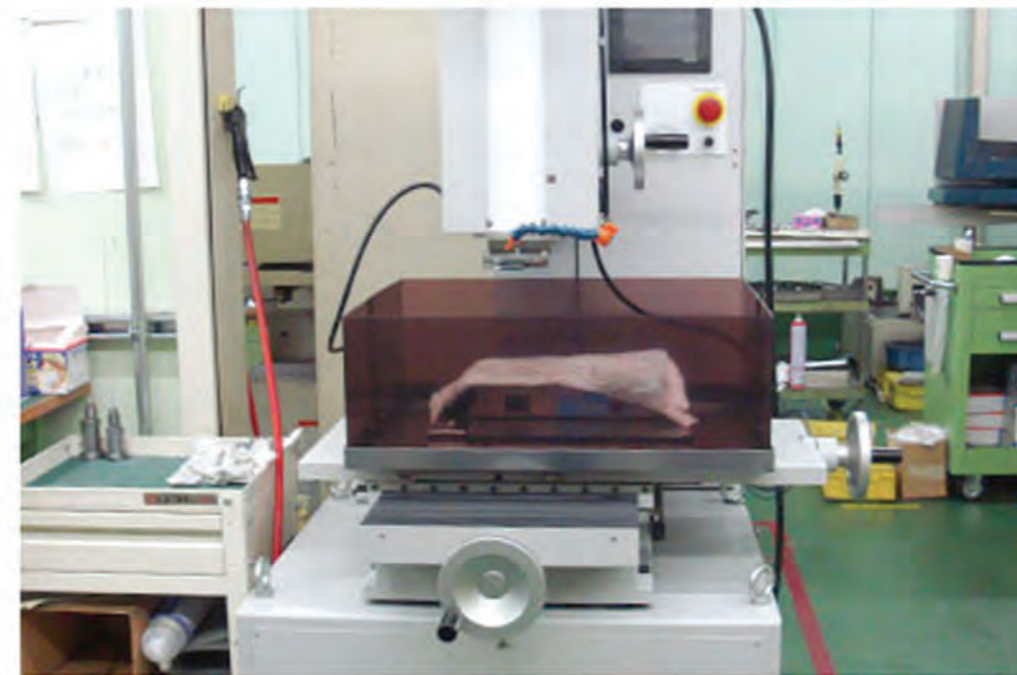
wedm-ls/慢走丝线切割

Precision equipment (精密設備)

Precision equipment (精密設備)



Five-axis cylindrical grinder/五轴圆柱磨床



Fine-hole spark machine/细孔放电机



CNC engraving and milling machine/精雕机



Precision Forming Plane Grinding/精密成型平面磨



Mirror EDM/镜面火花加工



Mirror EDM/镜面火花加工

Precision equipment (精密設備)

Precision equipment (精密設備)



Four-axis CNC machine tool/四轴CNC机床



Optical grinder/光学磨床 (PG)



Precision surface grinder/精密平面磨床



Precision dust free workshop (3rd floor, building B)

精密无尘车间 (B栋3楼)



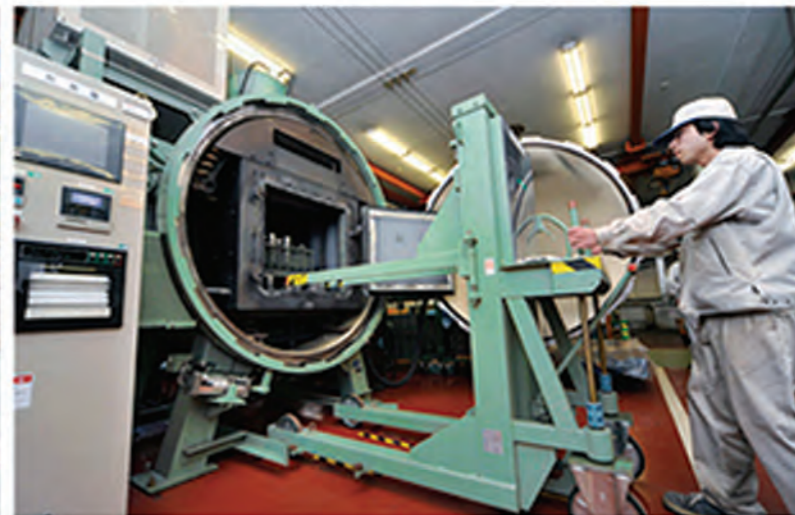
Precision dust free workshop (3rd floor, building B)

精密无尘车间 (B栋3楼)



Import materials

进口材料



heat treatment

热处理



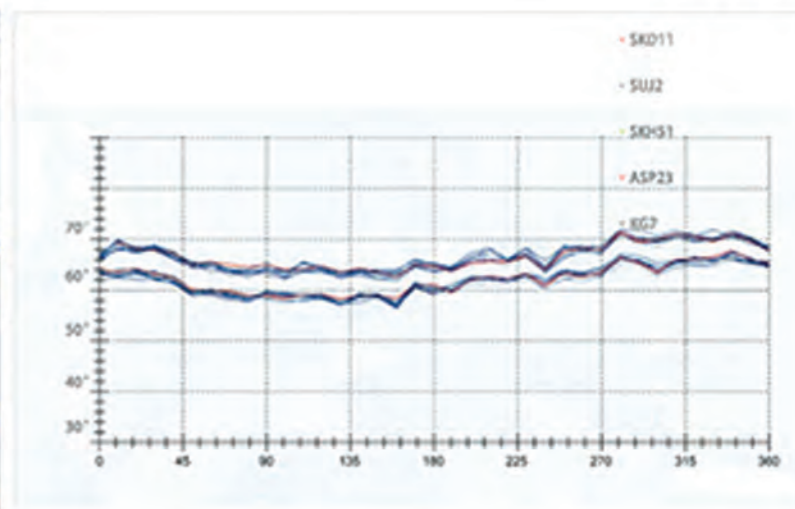
Engineer technical discussion area

工程师技术讨论区域



Reception area

会客区



Conference Room

会议室



Inspection room

品检室



Five axis CNC machining

五轴CNC加工



CNC turning and milling

数控CNC车铣加工



Plane mill
平面磨加工



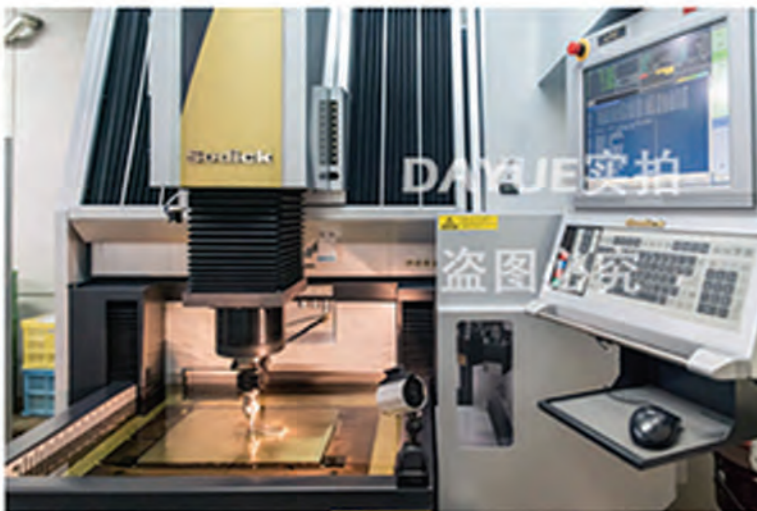
Slow wire processing
慢走丝加工



Processing of large gantry milling machine
大型龙门铣床加工



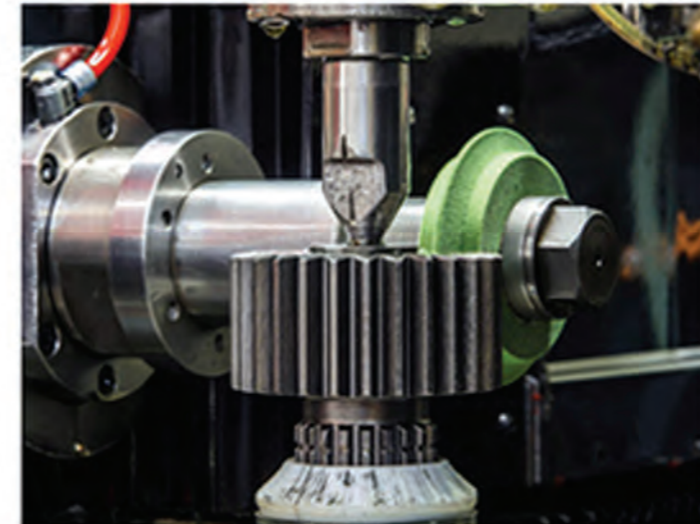
Grinding of large top center
大型顶心研磨加工



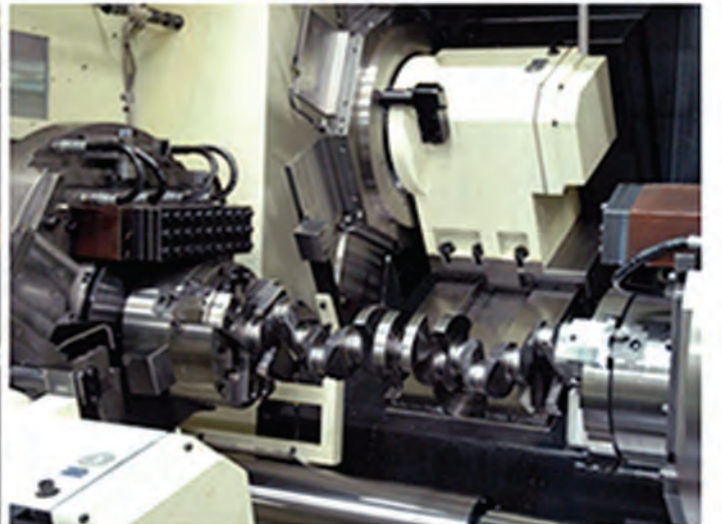
Mirror EDM
镜面放电加工



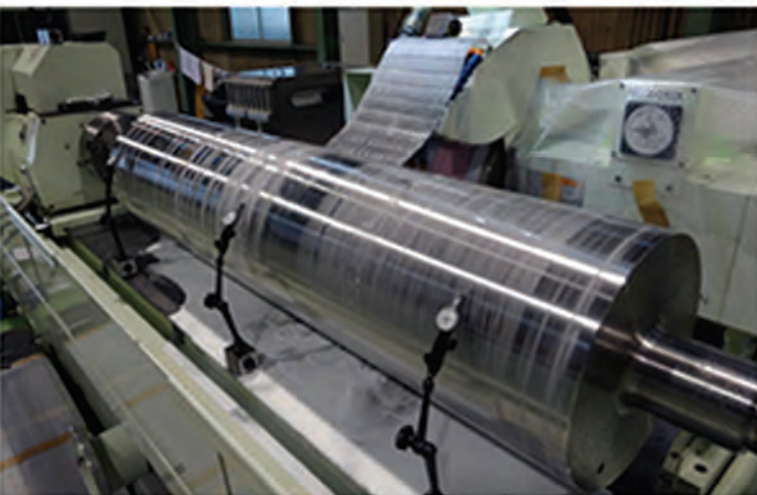
Optical grinder processing
光学磨床加工



Hobbing and grinding
滚齿磨齿加工



Surface grinding
曲面研磨加工



Cylindrical grinding
外圆磨



Internal grinding
内圆磨

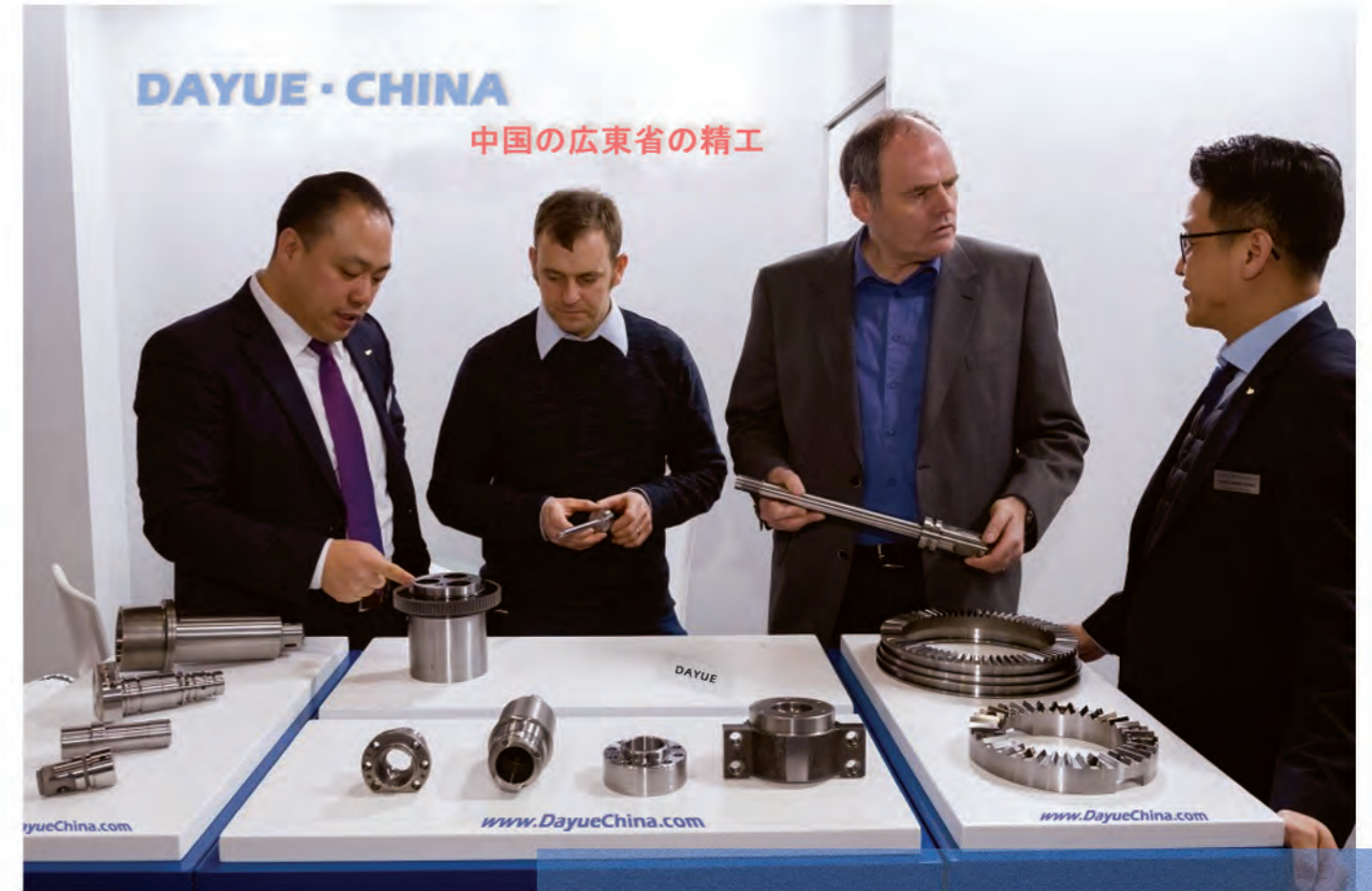


Hard alloy processing
硬质合金加工



Three coordinate detection
三坐标检测

machine/机器名称	Model/型号	Manufacturer/厂商	Number/数量
Precision Forming Plane Grinding/精密成型平面磨	PFG-500XAL	Okamoto Machine Tool Manufacturing Co., Ltd. 冈本机床制造有限公司	1
	MEISTER V3	Amada Machine Tool Co., Ltd. Amada机床有限公司	1
Precision surface grinder/精密平面磨床	PSG-63DX	Okamoto Machine Tool Manufacturing Co., Ltd. 冈本机床制造有限公司	1
	GS-BM3L	Kuroda Seiko Co., Ltd. 黑田精工株式会社	1
	GS-515PFL		1
	GS63PF		1
	GS45FL		1
	MSG-200	Mitsui Hi-tech Co., Ltd. 三井高科技股份有限公司	8
	NP630-F	Long Island Seiko Co., Ltd. 长岛精工株式会社	1
	NP520-F		1
Optical grinder/光学磨床 (PG)	PGX-2500N	Weida Manufacturing Co., Ltd. 威达制造有限公司	2
	SPG TYPE R.		1
	PGX-1200		1
	SPG-WI		1
WEDM/电火花线切割机	AP450L	Sandik Co., Ltd. 沙迪克有限公司	1
	AP250L		2
	SUPERMM 50A	Western Electric Co., Ltd. / 西部电气有限公司	1
	MM500S		1
	超MM50A		1
NC fixture grinder/NC夹具磨床	JG35CPX	Weida Manufacturing Co., Ltd. / 威达制造有限公司	3
Milling machine/四轴五轴CNC机床	FANUC T21DL	Hitachi Precision Machine Co., Ltd. / 日立精机株式会社	3
	NT4250	Muye Milling Co., Ltd. / 牧野铣削有限公司	6
	VHR-AP	Jinggang Industrial Co., Ltd. / 静冈工业株式会社	1
CNC milling machine/数控铣床	a-T211DL	Sandik Co., Ltd. / 发那科公司	3
CNC Discharge Machining Machine/数控放电加工机	AM3L	Sandik Co., Ltd. / 沙迪克有限公司	1
	AG40L		1
High Speed Fine Hole EDM/高速细孔电火花机	K1C	Mitsubishi/三菱电机株式会社	3
CNC Fine Hole Discharge Machining Machine/数控细孔放电加工机	SH12		3
Vertical drilling machine/立式钻床	YD2-55	Jiko Yoshida Co., Ltd. / 吉田纪子株式会社	1
Automatic cylindrical grinder/自动化外圆磨床	H250SAII	Amada Machine Tool Co., Ltd. / Amada机床有限公司	6
Vertical Machining Center/立式加工中心	GX 800	Techno Washino Co., Ltd.	3
Precision table lathe/精密台式车床	KL-16B	Beicun Production Institute/北村制作所	12
Manual cylindrical grinder/冲子研磨机	ZK-W010	Taiwan Zhengjia Punch Machine Company/台湾正佳冲子机公司	15
CNC engraving and milling machine/精雕机	DC 5000	SpeedShare Co., Ltd. / SpeedShare有限公司	6
Gantry processing center/龙门加工中心	LM-L2015B	Taiwan Lina CNC Co., Ltd. / 台湾力玛数控	3
High Precision Centerless Grinder/高精度无心磨床	XUM-1808S	Xinyi Machine Tool Co., Ltd. / 鑫一机床	12
Four-axis CNC machine tool/四轴CNC机床	FANUC T21DL	Fuji Manufacturing Co., Ltd. / 富士制造有限公司	3
Inner hole quilting machine/内孔珩磨机	KSJ-1552LC	TAMIX Company/TAMIX公司	6



Equipment list (設備清單)





產品分類：

模具配件
碳化物工具
研磨類零件

機加工零件
液壓組件

Our products
(我們的產品)



Mold Components

(模具配件)

Dayue Precision Technology (Dongguan) Co., Ltd. is located in Dalang Town, Dongguan City, where the most intensive mold parts are in China.

We have 24 years of experience in the mold field. With advanced machining equipment and mature technology, we are mainly engaged in The mold industry has gradually relied on DAYUE' s mold parts and the added value.

DAYUE' s main mold parts areas are:

- Press Die Components
- Injection Mold Components
- Die Casting Mould Components
- Hot runner system
- Blow Mold Components
- Bottle Cap Mold Components
- Cosmetic Mold Components
- Components For Automobile Dies
- Die Casting Mould Components
- Terminal mold parts
- Connector mold parts

- Punch and Dies
- Ejector and Sleeve
- Core Pin
- Guide Column and Bushing
- Mold Spring
- Oil-Free Sliding Plate
- Cavity and Core
- Guide Block Assembly
- Positioning Slider
- Positioning Post
- Date Stamp
- Runner Nozzle and Pin
- Mould inserts
- Threaded Cores
- DIN standard and ISO standard

- Under normal circumstances:
- The roughest diameter is 850mm
- The longest processing length is 3500mm
- The maximum range of length tolerance can reach ± 0.002
- The maximum diameter tolerance can reach ± 0.001
- The highest tolerance of cylindricity can reach 0.003
- The highest tolerance of runout can reach 0.003
- The finish RA can reach up to 0.004
- The highest vertical tolerance can reach 0.005
- Parallelism tolerance can reach up to 0.005



Mould Components (模具配件)

Common materials (常用材質)

Cold work die steel:
1.2379, 1.2713, 2310, SKD-11, DC53, D2, BM2

Hot work die steel:
1.2343, 1.2344, SKD-61, FDAC, NAK80,
DHA1, HPM31, BH13, 8420, 8470, 618

High speed steel:
1.3343, 1.3243, SKH-51, SKH-55, SKH-59, M2, M42, ASP23,
ASP60, ASSB 88, 2310, 2723

Tungsten carbide:
YG3X, YG6, YG6X, YG8, YG11C, YG15, YG8N, YG8C, YT5, YT14,
YT30, YW1, YW2



Solve all problems in precision parts manufacturing

解決一切精密零部件製造難題

Our products
(我們的產品)



Solve all problems in precision parts manufacturing
解決一切精密零部件製造難題

Machined parts
(機加工零件)

Dayue Tungsten Carbide Manufacturing(Chengdu) Co., Ltd. was established in 2002. With the progress of the times, the research and development of new materials is the only way for DAYUE.

DAYUE' s main tungsten carbide parts are:

- Custom Tungsten Carbide Tooling
- Wear Parts and Specialty Components
- Oil And Natural Gas Wear Parts
- Drilling Components
- Choke and Trim Components
- High Pressure Pump Components
- Automotive and Battery Field Tools
- Wire and Tube Manufacturing Tools
- Powdered Metal Tooling
- Tungsten Carbide Dies
- Wear Parts and Specialty Components
- Machined Parts

- Compacting Dies and Punches
- Slitting and Shear Knives
- Bushings and Bearings
- Bearings
- Pins and Shafts
- Valve Seats and Stems
- Plungers
- Wire Guides and Rolls
- Textile Presser Feet and Feed Dogs
- Mud Deflectors
- Rotors and Stators
- Erosion Sleeves
- Flow Restrictor Bearings
- Main Pulsar Components
- Ported Flow Cages
- Solid Carbide Threaded Mud Nozzles
- Stratapax Cutters
- Flow Control Components
- Flow Tubes
- Dispenser Firing pin and nozzle

Tungsten carbide

(碳化物硬質合金)

- Under normal circumstances:
- The roughest diameter is 850mm
- The longest processing length is 3500mm
- The maximum range of length tolerance can reach ± 0.002
- The maximum diameter tolerance can reach ± 0.001
- The highest tolerance of cylindricity can reach 0.003
- The highest tolerance of runout can reach 0.003
- The finish RA can reach up to 0.004
- The highest vertical tolerance can reach 0.005
- Parallelism tolerance can reach up to 0.005



Tungsten carbide (碳化鎢硬質合金)

Common materials

DAYUE cemented tungsten carbide grades: YG3X, YG6, YG6X, YG8, YG8N, YG11C, YG15, YG4C, YG6A, YG8C, YT5, YT14, YT30, YW1, YW2.

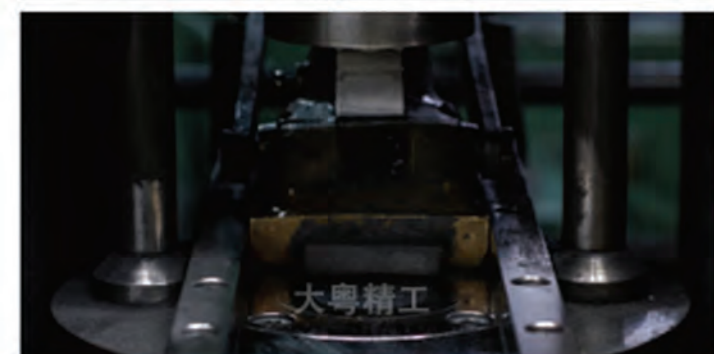


1.blend

1.混合

均匀混合几种原料粉末。粒度和混合比根据等级而不同。

Mix several kinds of raw powder evenly, and the particle size and mixing ratio vary according to the grade.



2.按

2.Press

将混合的原料装入模具中并压入圆筒，圆筒或块中。压制方法和模具根据产品形状而不同。

The mixed raw materials are put into the mould and pressed into the cylinder. The pressing method and mould are different according to the product shape.



3.CIP

对成型体施加水压，从各个方向均匀地施加压力。通过施加压力，使成型体均匀化并致密化。

Apply water pressure to the molding body and apply pressure evenly from all directions. By applying pressure, the forming body is homogenized and densified.

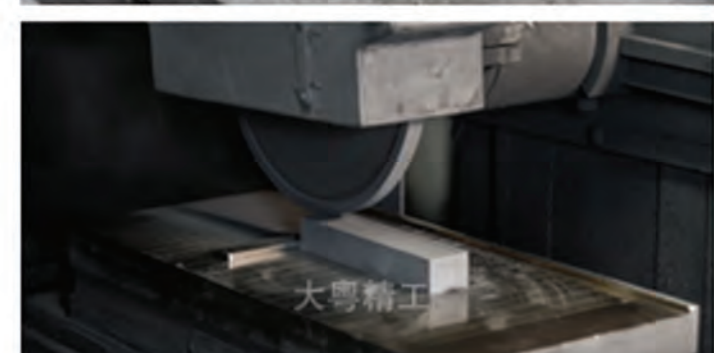


4.预烧结

4.Presintering

CIP生坯从500°C加热到700°C，易于加工。

GIP billets are heated from 500 ° to 700 ° and easy to process.

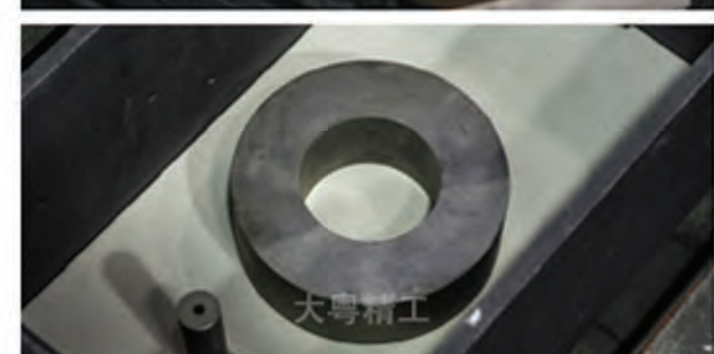


5.handle

5.处理

考虑到预烧结过程中模型产品的收缩率和烧结后的加工余量，可根据客户要求加工成尺寸和形状。

Considering the shrinkage of the molded products in the pre sintering process and the machining allowance after sintering, it can be processed into size and shape according to the requirements of customers.

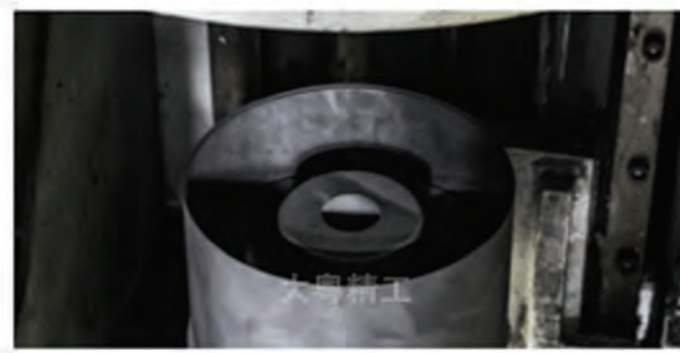


6.主要烧结

6.Main sintering

将加工产物插入烧结炉中并在1300°C至1400°C下加热，以在真空中进行主要烧结。

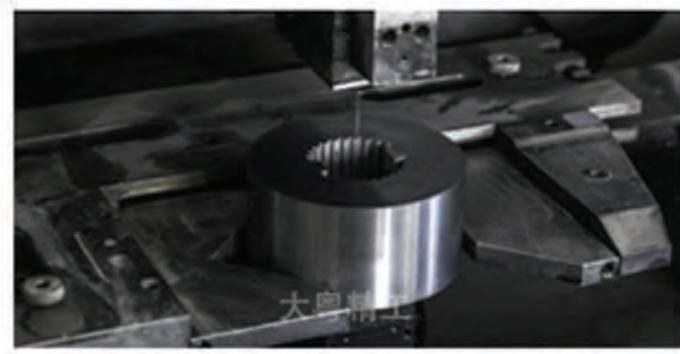
The processed products are inserted into the sintering furnace and heated at 1300 ° C to 1400 ° C for main sintering in vacuum.



7. HIP

使用氢气作为加压介质进行高压热处理，以除去合金内的嵌套。该过程产生硬质合金材料。

Oxygen is used as pressure medium for high pressure heat treatment to remove nesting in the alloy, which produces cemented carbide materials.



8.Wire EDM

通过激励极细的线材，通过放电加工处理从薄到厚的各种形状。实现高加工精度和表面粗糙度。

By exciting the very fine wire rod and discharging the various shapes from thin to thick, the machining accuracy and roughness can be achieved.



9.表面磨削

9.Surface grinding

卧式磨床。可以使用六面体研磨，阶梯研磨，使用虎钳的锥形研磨以及各种其他应用研磨。

Horizontal grinder, can use hexahedron grinding, step grinding, taper grinding with vise and other grinding applications.



10.精密加工

10.Precision machining

这是一种光学扫描研磨机。这是一个高难度的过程，可以在20倍或50倍的屏幕上添加双视图，并精确处理投影图像。

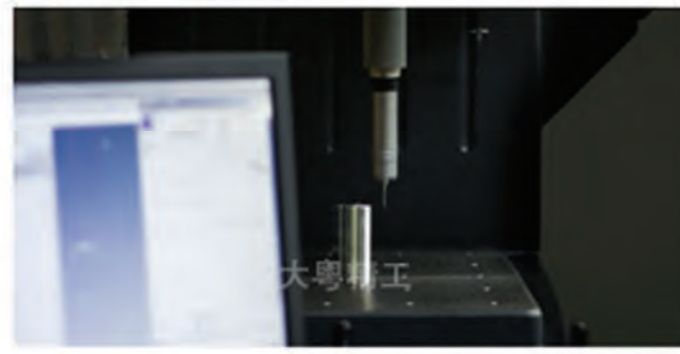
This is an optical scanning grinder, which is a very difficult process. It can add double views on 20 times or 50 times of the screen, and accurately process the projected image.



11. Migaki

当指示完成LAP <镜面>时，使用棒磨石或金刚石粉处理面部以进行反射。

When laps (mirrors) are indicated to be complete, the face is treated with a grindstone or diamond powder for reflection.



12.检查

12.inspect

使用千分尺或三维测量机进行微米检查。

Micrometer or three-dimensional measuring machine is used for micrometer detection.

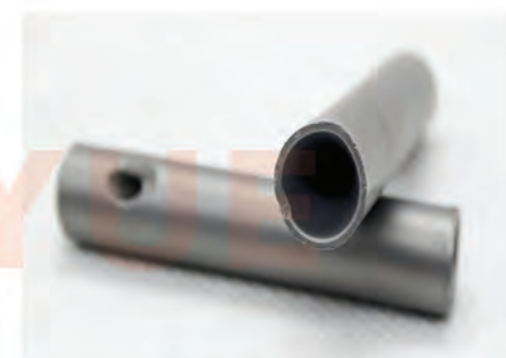
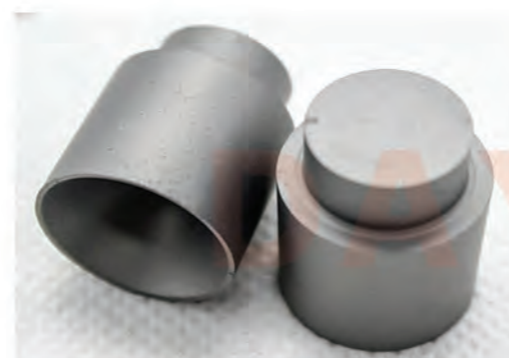
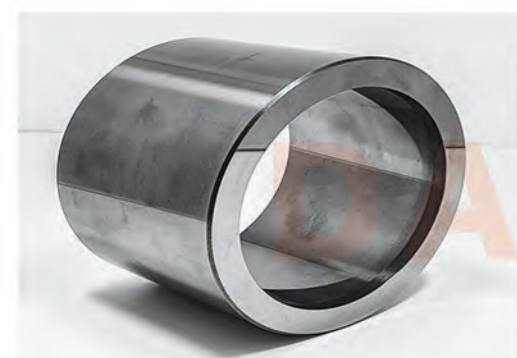
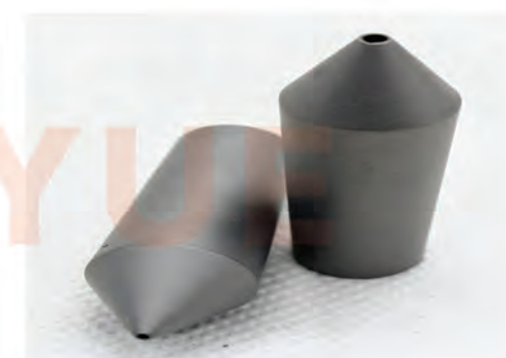
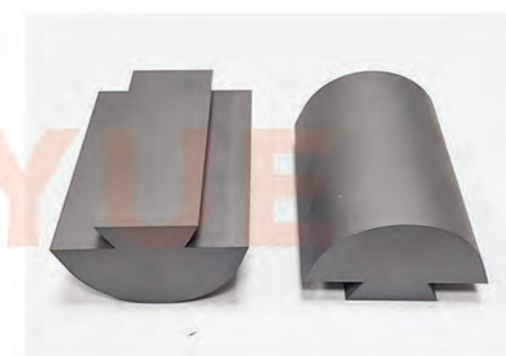
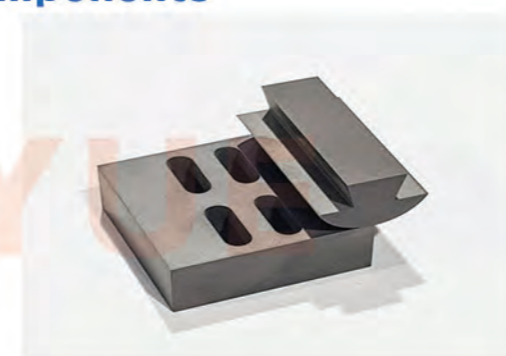
石油與天然氣用硬質合金 Tungsten carbide for oil and gas



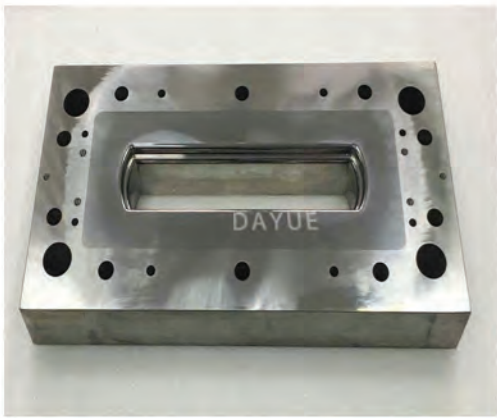
扼流圈零件 Choke parts



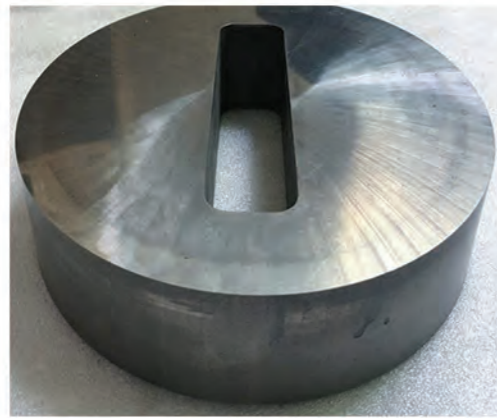
閥門組件
Valve components



硬質合金模具 Tungsten carbide mould



不鏽鋼外殼拉伸模具



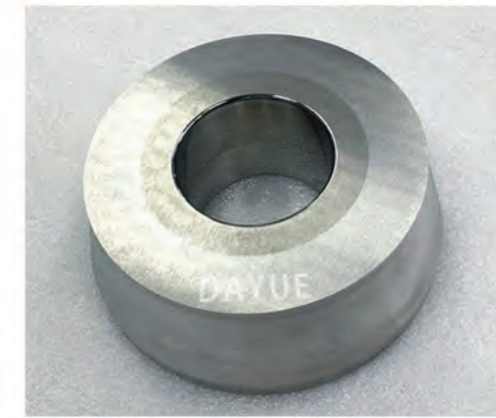
拉拔模具



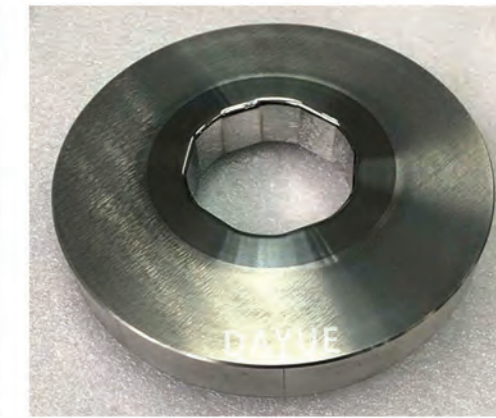
擠壓模具



冷鑄模具



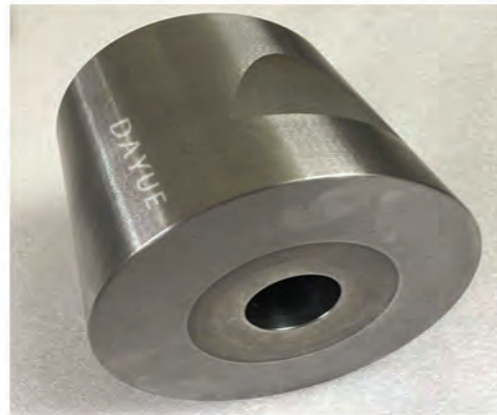
拉絲模具



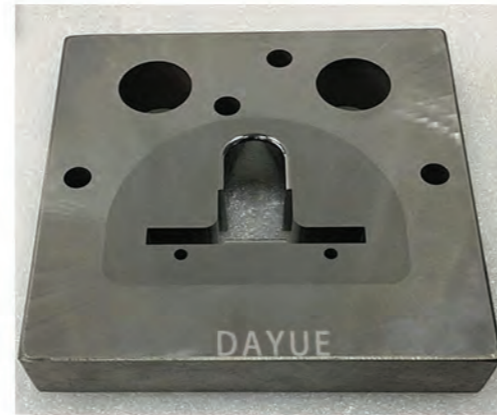
拉伸模具



銅排擠出模具



螺絲冷鑄模具



擠壓模具



拉伸模具



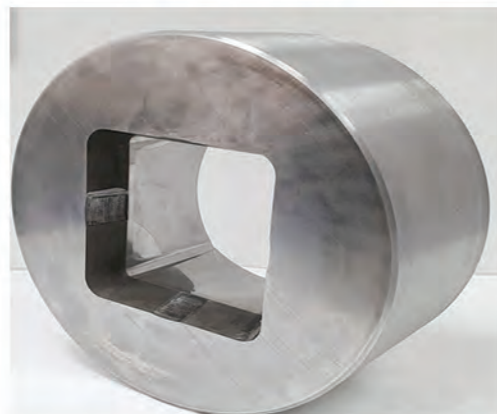
拉伸模具



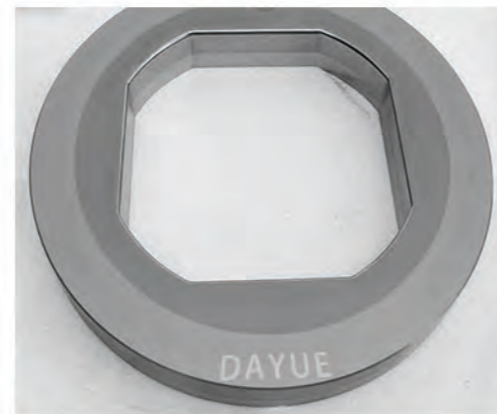
瓶子拉伸模具



萬向輪支架模具



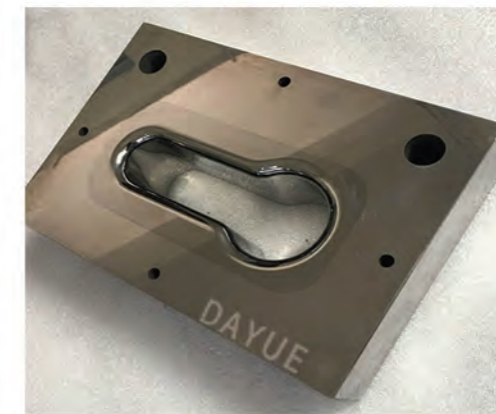
拉伸模具



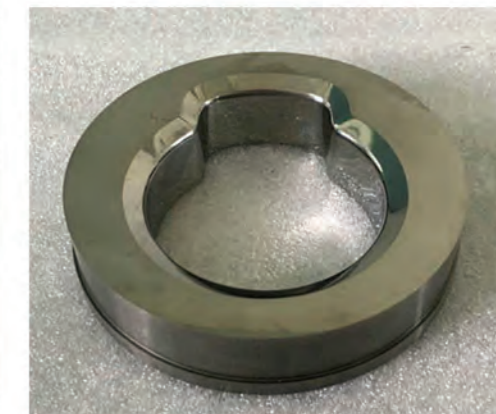
餐盤拉伸模具



鎖殼拉伸模具



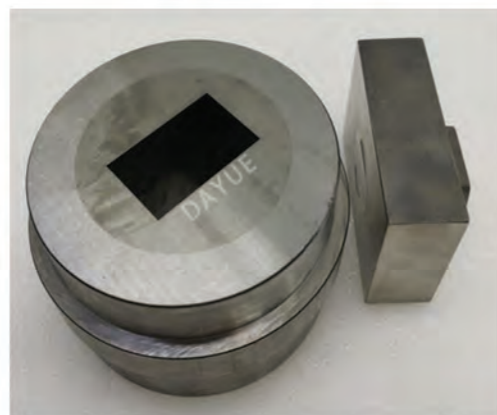
腳輪拉伸模具



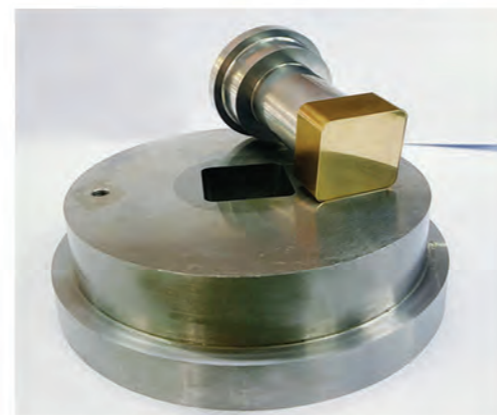
異形拉伸模具



拉伸模具



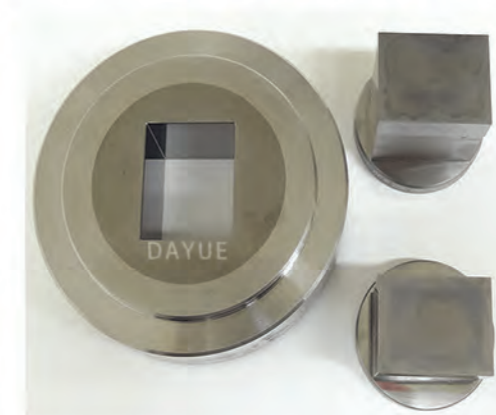
陶瓷壓片模具



紅外壓片模具



粉末冶金模具



壓片模具



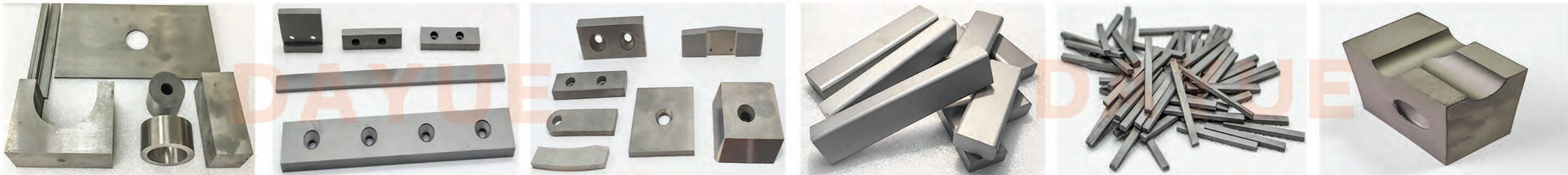
齒輪粉末冶金模具

碳化钨工具毛坯 Tungsten carbide tool blanks

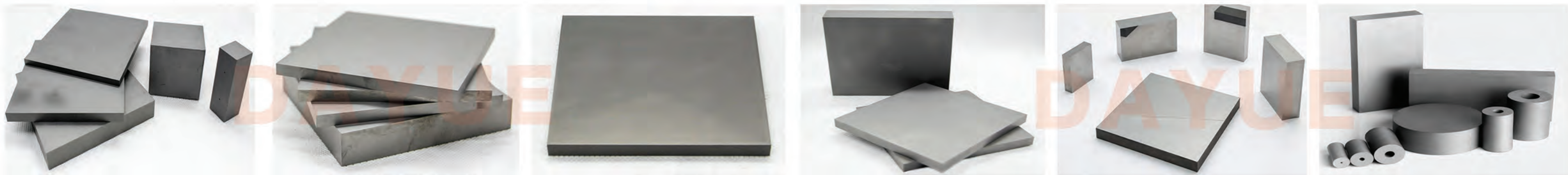
棒材 Bar



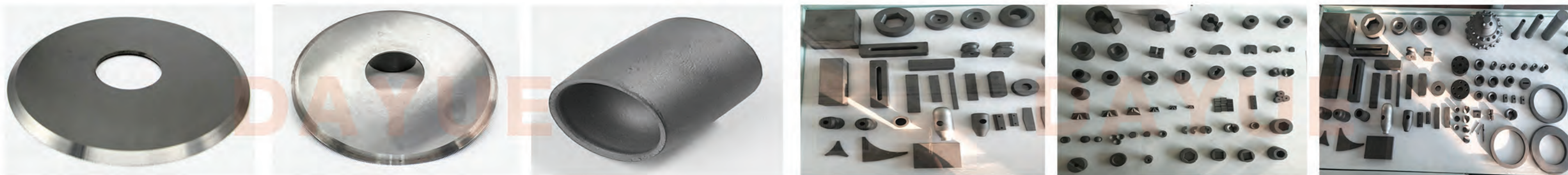
特殊形状 Special shape



切割板 Cutting board



圆柱体 Cylinder



冶金行業碳化物工具
Metallurgical industry tungsten carbide tools

軋輥 Roller



導輥/捲邊輪 Guide roller



碳化物機械零件
tungsten carbide mechanical Parts

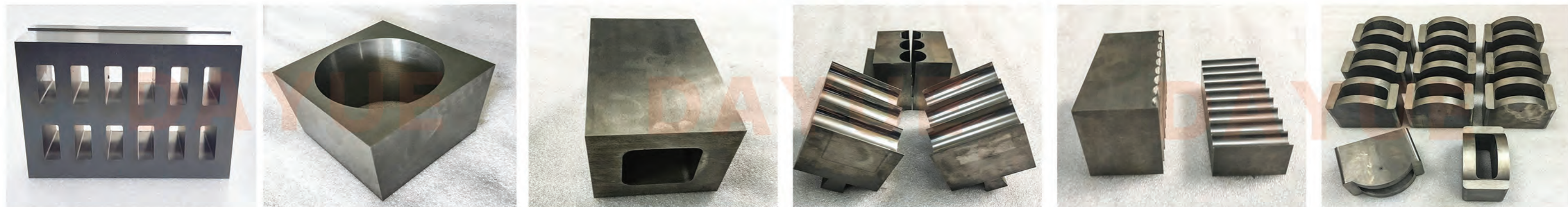
O型圈 O-ring



襯套 bushing



無磁合金零件 Non-magnetic carbide parts



沖頭及軸 Punch and shaft

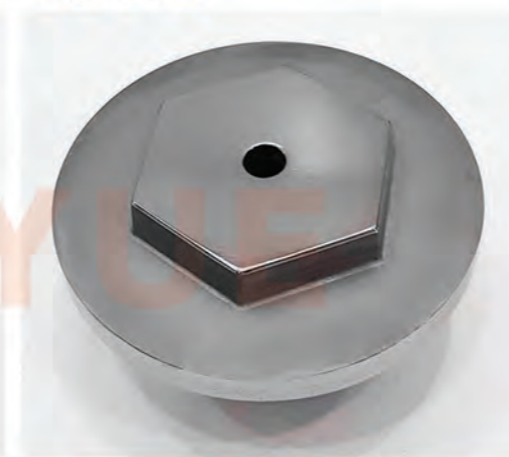


採礦業硬質合金零件 Mining industry tungsten carbide Parts

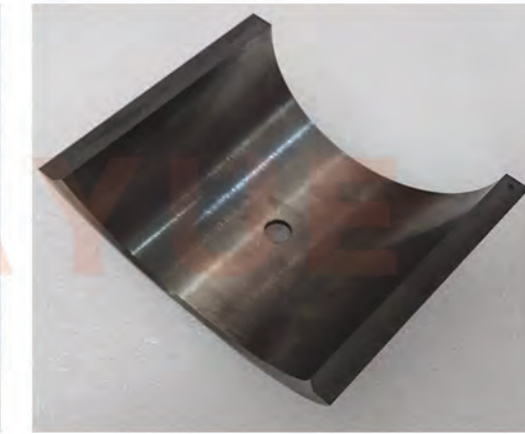
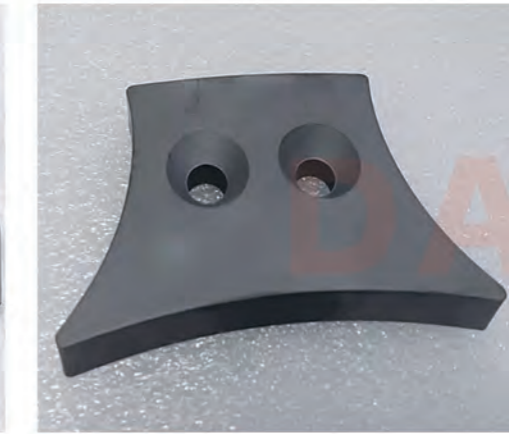
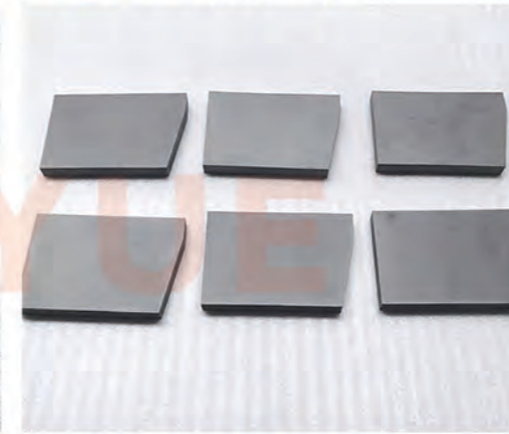
鑿齒 Chisel



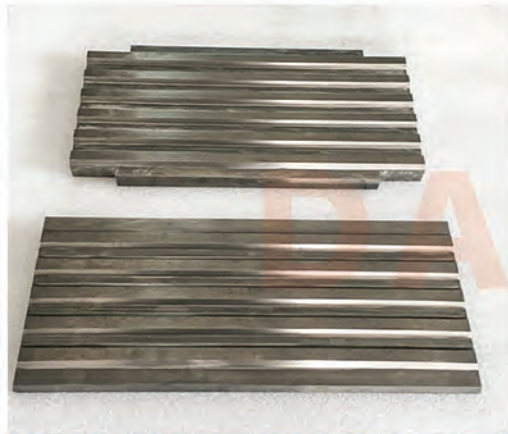
噴水嘴 Spout



刀頭 | 鈎片 Blade | drill bit



盾購機零件 Shield purchase machine parts



按照圖紙
According to the drawings



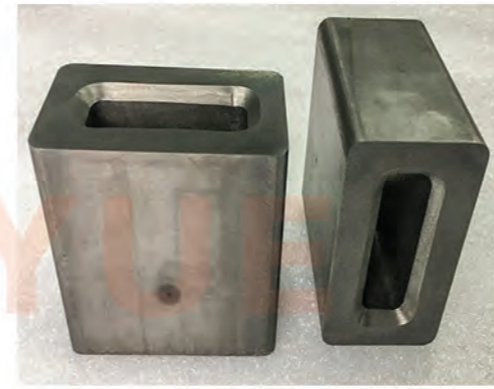
電池製造工具



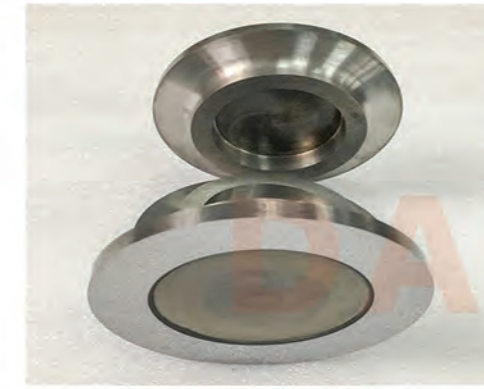
電池製造工具



廚具製造工具



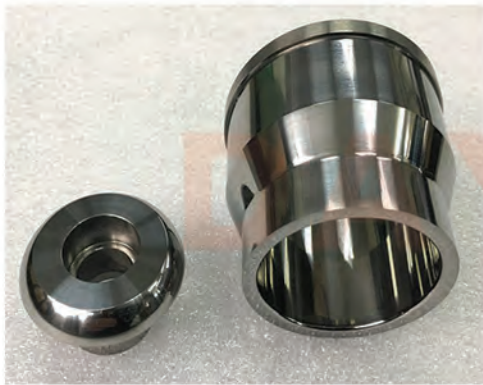
磁鐵製造工具



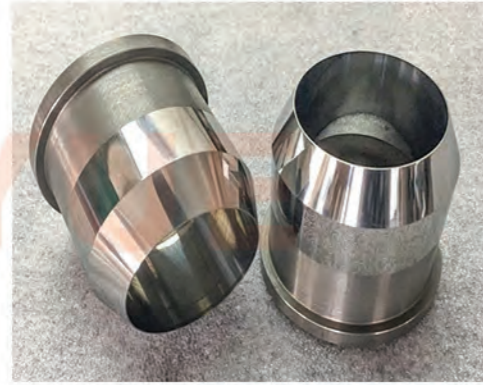
磁鐵製造工具



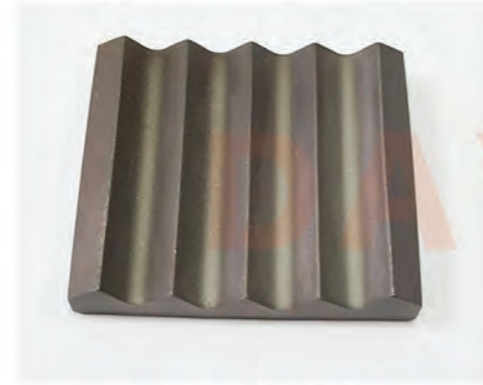
注塑機用工具



管材製造工具



管材製造工具



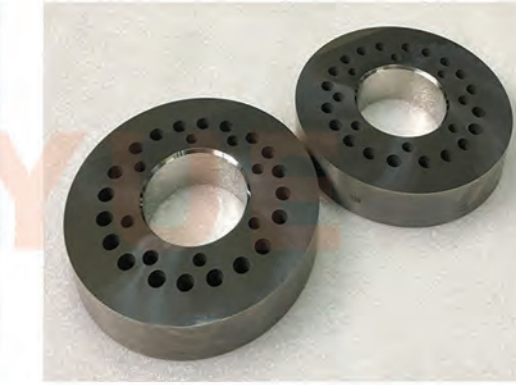
多晶硅破碎機工具



熱熔鑽



模具配件



海底作業工具



噴砂機用工具



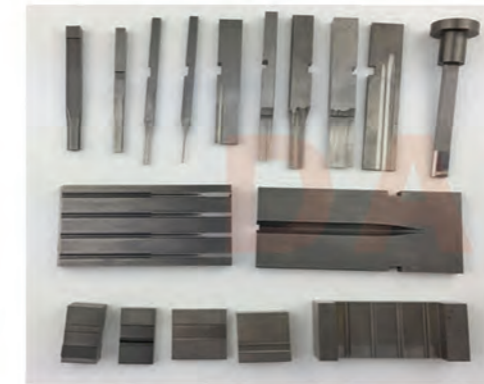
噴砂機用工具



螺絲製造工具



點膠機氧化硅零件



端子製造工具



流粉碎機工具



節流閥工具



泵體工具



管道製造工具



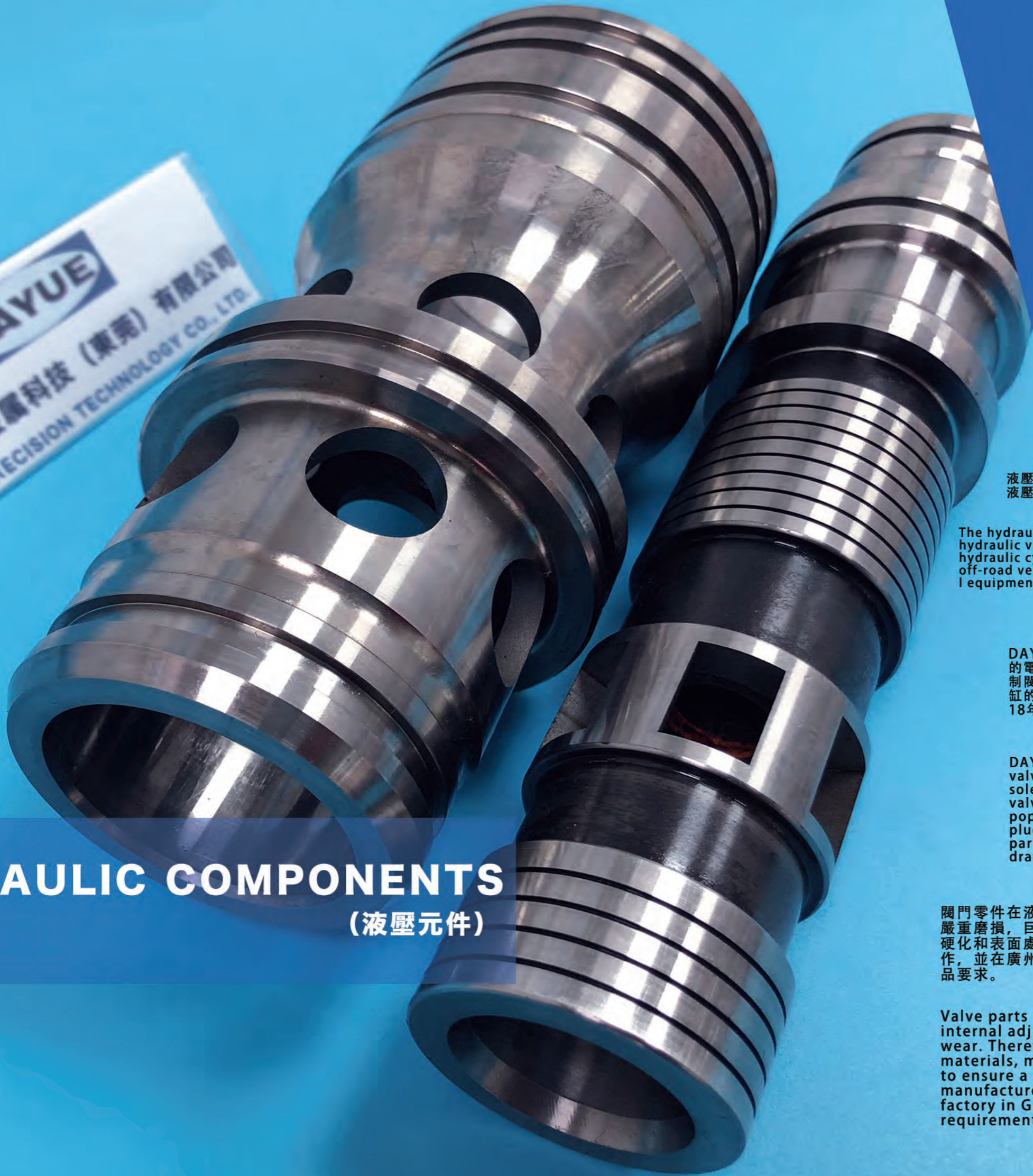
密封工具



製煤業工具



汽車業工具



HYDRAULIC COMPONENTS

(液壓元件)

DAYUE提供的液壓閥零件，廣泛用於液壓閥的液壓零件，甚至擴展到液壓泵，液壓馬達，液壓缸以及用於越野車，怪手，非公路汽車，液壓系統，工業用的各種液壓控制閥的設備機械設備。

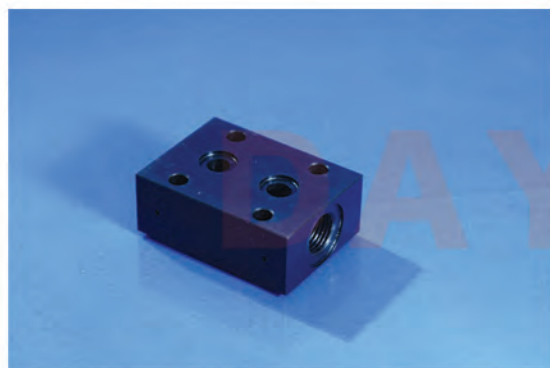
The hydraulic valve parts provided by DAYUE are widely used in hydraulic parts of hydraulic valves, and even extended to hydraulic pumps, hydraulic motors, hydraulic cylinders and various hydraulic controls for off-road vehicles, excavators, off-road vehicles, hydraulic systems, and industrial use. Valve equipment mechanical equipment.

DAYUE液壓閥零件包括與液壓閥相關的某些零件，比如閥附件：電磁換向閥的電磁閥或閥體，模組化閥安裝的閥底板或歧管，插裝閥腔；或閥零件：控制閥提動閥芯/閥座，方向閥滑閥，閥套，閥塞等。也包括柱塞泵，油缸或氣缸的零件，我們非常擅長的是安裝客戶圖紙就行定制，在這方面我們已經有18年以上經驗。

DAYUE hydraulic valve parts include certain parts related to hydraulic valves, such as valve accessories: solenoid valve or valve body of solenoid directional valve, valve base plate or manifold for modular valve installation, cartridge valve cavity; or valve parts: control Valve poppet spool/seat, directional valve slide valve, valve sleeve, valve plug, etc. It also includes plunger pumps, oil cylinders or air cylinder parts. What we are very good at is customizing by installing customer drawings. In this regard, we have more than 18 years of experience.

閥門零件在液壓閥中起著驅動設備或內部調節作用最大，因此容易遭受嚴重磨損，因此對供應商而言，重要的因素是要考慮原材料，製造技術，硬化和表面處理，以確保使用壽命更長。DAYUE與多年的閥門製造商合作，並在廣州設有專門的研磨加工工廠，我們的零件一定會滿足您的產品要求。

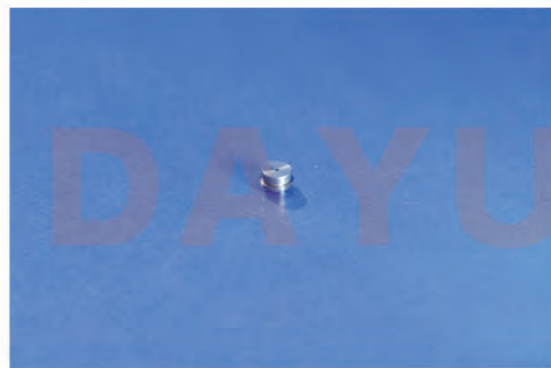
Valve parts play the most important role in driving equipment or internal adjustment in hydraulic valves, so they are prone to severe wear. Therefore, for suppliers, the important factor is to consider raw materials, manufacturing processes, hardening and surface treatment to ensure a longer service life. long. DAYUE has cooperated with valve manufacturers for many years and has a special grinding and processing factory in Guangzhou. Our parts will surely meet your product requirements.



单向阀组件



单向阀锥阀



电磁换向阀阻尼



电磁换向阀花垫



电磁换向阀阀芯



堵头



支环



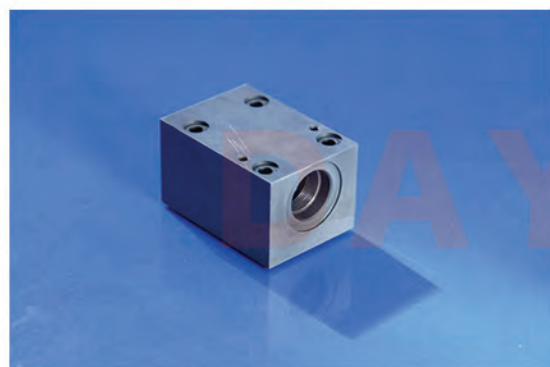
阀芯



电磁球阀支座



阀座



电磁球阀体



弹簧座



叠加式液控单向阀锥阀芯



螺帽



叠加式液控单向阀阀座



叠加式液控单向阀阀芯



叠加式液控单向阀阀套



手动阀球头拔杆



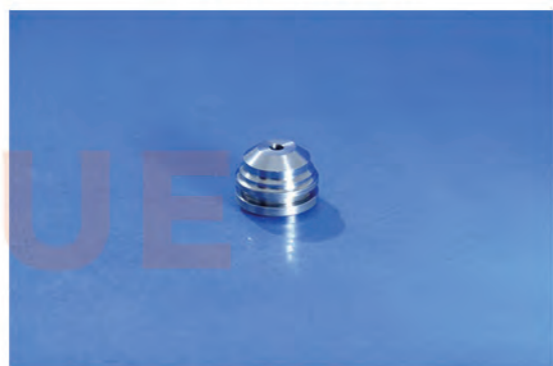
手动阀操纵杆



转轴



转位螺塞



档套



液控单向阀锥阀芯



叠加型双单向节流阀节流螺杆



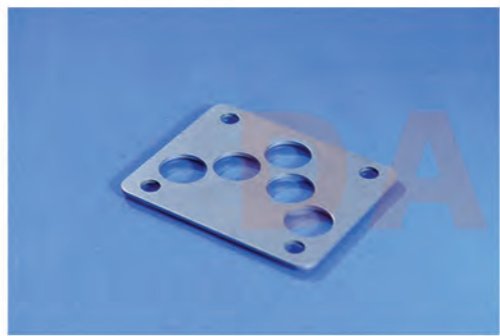
节流阀芯



節流螺栓



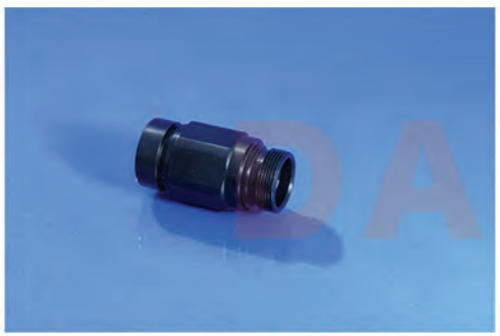
節流閥芯



O型擋圈



閥座



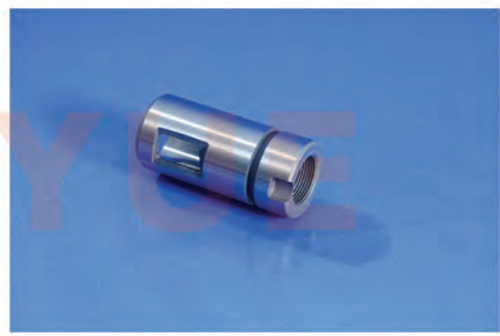
導向套



二通流量控制閥塞堵



二通流量控制閥 閥芯



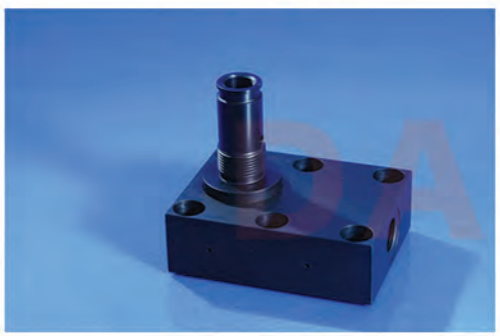
節流套



節流閥及單向節流閥 錐閥芯



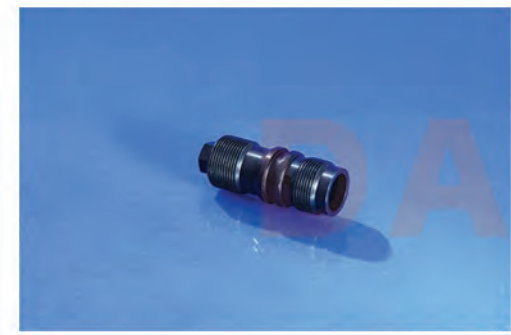
節流閥閥套



節流截止閥閥體



節流閥芯



溢流閥調節套



溢流閥主閥芯



溢流閥導閥座



溢流閥閥芯



溢流閥閥芯B



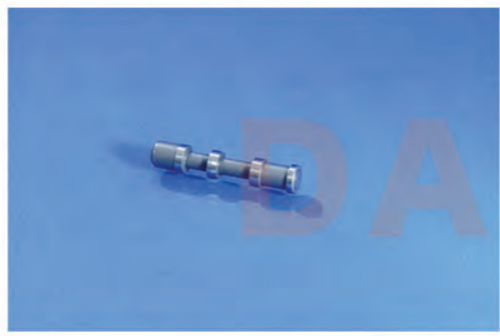
主閥芯



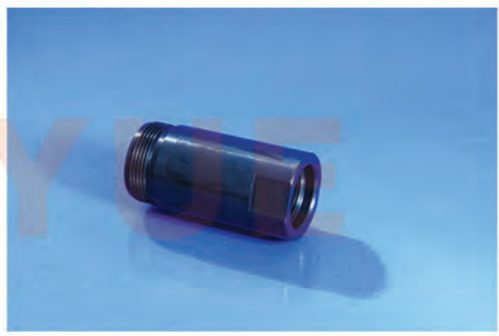
溢流閥閥套



順序閥閥芯



直動式順序閥閥芯



連接套



插件



球頭閥桿



挖掘機提升器閥芯



挖掘機提升器閥芯



挖掘機閥桿



挖掘機液壓泵閥芯



挖掘機提升器閥套



挖掘機提升器閥套

SERVICE

(服務)

Many companies do turning, but not like DAYUE. Everything from variety and size of machinery, to our skilled machinists, to in-process inspection make DAYUE the most suited to manufacture your parts. Your parts will be manufactured by machinists, not operators that have been trained in-house by our most senior machinists. 許多公司都在做車削，但不像DAYUE。從機械的種類和尺寸到我們熟練的機械師到過程中檢查的所有內容，DAYUE都最適合製造您的零件。您的零件將由機械師製造，而不是由我們最資深的機械師內部培訓的操作員製造。

Processes

We work closely with our tooling suppliers to stay on the cutting edge of tool development. Whether it's insert geometry, new tooling designs, or entirely new processes, we take an aggressive stance on incorporating modern techniques and innovative ideas in our turning cycles.

Some of these innovations include:

- Hard turning up to 35-76HRC
- Thread rolling to produce stronger threads than traditional cutting processes
- On-machine part serialization

工藝流程

我們與工具供應商緊密合作，以保持工具開發的最前沿。無論是刀片的幾何形狀，新的模具設計還是全新的工藝，我們在車削迴圈中都採取積極的態度，將現代科技和創新理念融合在一起。其中一些創新包括：

- 車削硬度範圍35-76HRC
- 滾牙可產生比傳統切割工藝更堅固的螺紋
- 機上零件序列化

Capability:

The largest diameter is within $\phi 800\text{mm}$

The longest length is within $\phi 3200\text{mm}$

能力:

最大直徑在 $\phi 800\text{mm}$ 以內

最長長度在 $\phi 3200\text{mm}$ 以內

Industries Served:

Mould (模具)
Machine (機械)
Medical (醫療)
Aerospace (航太)
semiconductor (電晶體)
Racing (賽車)
Power Transmission (電力傳輸)
Combustion / Process Control (發動機/動力)
Hydraulic (液壓系統)
Canning (制罐業)
Petroleum and natural gas (石油和瓦斯)
Shipbuilding (造船業)
Robots etc. (機器人等)

CNC TURNING

(CNC車削)

DAYUE
粵精工金屬科技 (東莞) 有限公司
PRECISION TECHNOLOGY CO., LTD.

Milling is one of the most varied processes in manufacturing today. Not confined to round forms, as with traditional turning and grinding, milling can take nearly any form but requires creativity and ingenuity on the part of the machinist.

As a precision parts manufacturer, we produce a wide range of parts of varying size and shape. By using state of the art machinery (on average three years old) and common fixture design we can quickly change from one job to the next and ensure accuracy and repeatability.

銑削是當今製造業中種類最多的工藝之一。不像傳統的車削和磨削那樣局限於圓形銑削幾乎可以採用任何形式，但需要創造力和獨創性在機械師方面。

作為精密零件製造商，我們生產各種零件大小和形狀各異的。通過使用最先進的機械（在平均三年）和通用夾具設計，我們可以快速從一項工作轉到下一項工作，並確保準確性和可重複性。

DAYUE
大粵精工金屬科技 (東莞) 有限公司
DAYUE PRECISION TECHNOLOGY CO., LTD.

Capability:

- Part sizes up to 2200 x 1600 x 120
- Milling accuracy better than +/-0.001mm
- Simultaneous 3 & 4 axis contouring
- Full 5 axis positioning

能力:

- 零件尺寸最大為2200 x 1600 x 120
- 銑削精度優於 +/- 0.001mm
- 同時進行3軸和4軸輪廓加工
- 全5軸定位

Industries Served:

Mould
Machine
Medical
Aerospace
semiconductor
Racing
Power Transmission
Combustion / Process Control
Hydraulic
Robots etc.

服務的行業:

模具
機械
醫療類
航太
電晶體
競速
電力傳輸
燃燒/過程控制
液壓式
機器人等

CNC MILLING

(CNC 銑削)



DAYUE uses a variety of grinding machines from well known names like Jones-Shipman and Kellenberger to exceed your tightest tolerances. Large and small quantities, simple to complex we have Decades of experience and the modern equipment to handle today's grinding challenges.

DAYUE使用各種知名的磨床像瓊斯·希普曼 (Jones-Shipman) 和凱倫伯格 (Kellenberger) 一樣，超出了您對的公差的嚴格範圍。無論數量大小，簡單到複雜，我們都有數十年的經驗和現代設備來應對當今的磨削挑戰。

We also have significant experience with cylindrical form grinding.

Outside the realm of typical diameter, face, angle grinding, form grinding utilizes custom wheel geometry and interpolation to create special forms. We inspect our form grinding using our Mitutoyo Contracer and can supply computer generated inspection data upon request.

我們在圓柱磨削方面也有豐富的經驗。在典型直徑範圍之外，進行平面，角向磨削，成型磨削，使用定制的砂輪幾何形狀和插補來創建特殊的成型件。我們使用Mitutoyo Contracer檢查我們的成型研磨，並可以根據要求提供電腦生成的檢查數據。

We are capable of grinding:

- Diameters up to 550mm
- Lengths up to 1500mm between centers
- Roundness to 0.002mm
- Straightness to 0.002 over 800mm

我們擅長研磨：

- 直徑最大550mm
- 中心之間的最大長度為1500mm
- 圓度至0.002mm
- 直線度在800mm上達到0.002

CNC GRINDING

(CNC研磨)

Industries Served:
Mould
Hydraulic
Machine
Medical
Car
Petroleum and natural gas
Shipbuilding
Mining
Aerospace
semiconductor
Racing
Power Transmission
Combustion / Process Control
Robots etc.



At DAYUE we pride ourselves on having the best people and equipment. In many cases this involves special "hard to find" capabilities. Non-Round grinding, sometimes thought of as continuous path jig grinding, is one of these uncommon capabilities that set us apart. In this process, the grinding wheel feed is synchronized to the rotation of the part.

在DAYUE, 我們以擁有最好的人員和設備而感到自豪。在許多情況下, 這涉及特殊的“難於發現”功能。非圓磨削(有時被稱為連續路徑夾具磨削)是使我們與眾不同的這些非凡能力之一。在此過程中, 砂輪進給與零件的旋轉同步。

Non-round Grinding is perfect for OD and ID applications:

- Square grinding
- Hex grinding
- Elliptical grinding
- Cam grinding
- Eccentric grinding
- many others!

非圓磨削非常適合OD和ID應用:

- 方磨
- 六角研磨
- 橢圓磨
- 凸輪磨削
- 偏心磨
- 很多其他的

Industries Served:

Mould
Hydraulic
Machine
Medical
Car
Petroleum and natural gas
Shipbuilding
Mining
Aerospace
semiconductor
Racing
Power Transmission
Combustion / Process Control
Robots etc.

服務的行業:

模具
液壓系統
機械
醫療類
汽車
石油和瓦斯
造船
礦業
航天
電晶體
競速
電力傳輸
燃燒/過程控制
機器人等

CNC NON-ROUND GRINDING

(夾具磨削)



WIRE EDM

(線切割)

Wire EDM (Electrical Discharge Machining) is a metal removal technique using a controlled electrical current or spark erosion. The EDM machine moves a wire through the part eroding material away. There is always a gap between the part and the wire, so there is no contact and virtually no deflecting force applied to the part, which ensures greater accuracy of the finished part.

線切割放電加工（放電加工）是一種使用受控電流或火花腐蝕的金屬去除科技。EDM機器將金屬絲穿過零件腐蝕資料。零件和導線之間始終存在間隙，因此不會接觸到零件，並且幾乎不會對零件施加偏斜力，從而確保了成品零件的精度更高。

Why use wire EDM over conventional methods?

When extremely tight tolerances are required, EDM may be the preferred method. Electrical discharge machining also affords you the ability to produce intricate detail which otherwise could not be produced.

為什麼在傳統方法上使用線電火花加工？

當需要極嚴格的公差時，EDM可能是首選方法。放電加工還使您能够生成原本無法生成的複雜細節。

products:

Mould Insert

Mould Core

Mould Cavity

Nozzle

Connector mold plug-in

Terminal mold core

Sleeve etc.

Carbide powder metallurgy mold

Carbide drawing die etc.

模具鑲件

模具型芯

模具型腔

噴嘴

連接器模具插件

端子模具型芯

閘套

鎢鋼粉末冶金模具

鎢鋼拉伸模具等

Many holes are either not cost effective or impossible to drill using conventional means. Capable of drilling difficult geometries, Electrical Discharge Machining (EDM Drilling) can drill depths up to 100X diameter and deeper. Call and ask about EDM drilling to discuss your application with one of our engineers or Or contact us by email (saint@dayuechina.com) to send us your graphics.

許多孔要麼成本太高，要麼無法使用常規方法鑽孔。放電加工（EDM鑽削）能够加工出困難的幾何形狀，其鑽削深度可達直徑的100倍甚至更深。致電詢問有關EDM鑽孔的問題，與我們的一比特工程師討論您的應用，或通過郵箱聯系（saint@dayuechina.com）我們發送您的圖紙。

Our small hole drilling capabilities include:

- Hole size from 0.008mm- 6mm diameter x 85mm deep
- Materials: Electrical conductivity is the only requirement. See a list below.
- Prototype or production quantities
- Short turnaround time
- Our Current 5-axis Small Hole Drilling machines can drill holes in nearly any orientation and is perfect for applications involving different diameters and angles.

我們的小孔鑽孔功能包括：

- 孔徑從.010"-直徑.250" x 12"深
- 資料：導電性是唯一要求。請參閱下麵的清單。
- 原型或生產數量
- 周轉時間短
- 我們當前的5軸小孔鑽床可以在幾乎任何方向上鑽孔，非常適合涉及不同直徑和角度的應用。

MICRO & SMALL HOLE DRILLING (EDM)

(微小孔放電)

Common Materials (常用材質)

Steel鋼
Stainless Steel不鏽鋼
Tool Steel工具鋼
Inconel (鎳合金)
Hastelloy (哈氏合金)
Aluminum (鋁)
Carbide (硬質合金)
Titanium (鈦)
Tungsten (鎢鋼)
Tantalum (鉭)
Copper (銅)
Brass (黃銅)
Bronze (青銅)

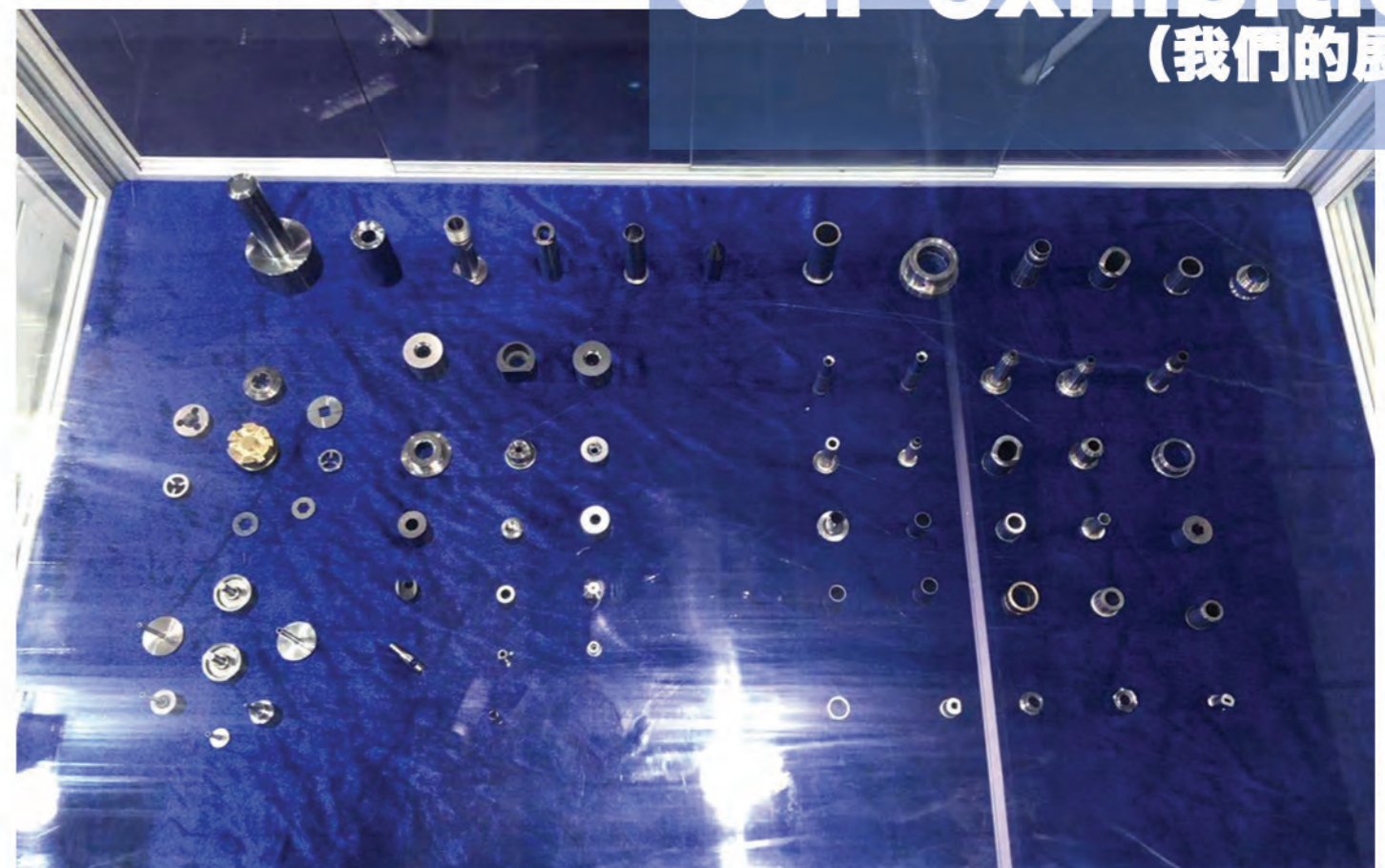
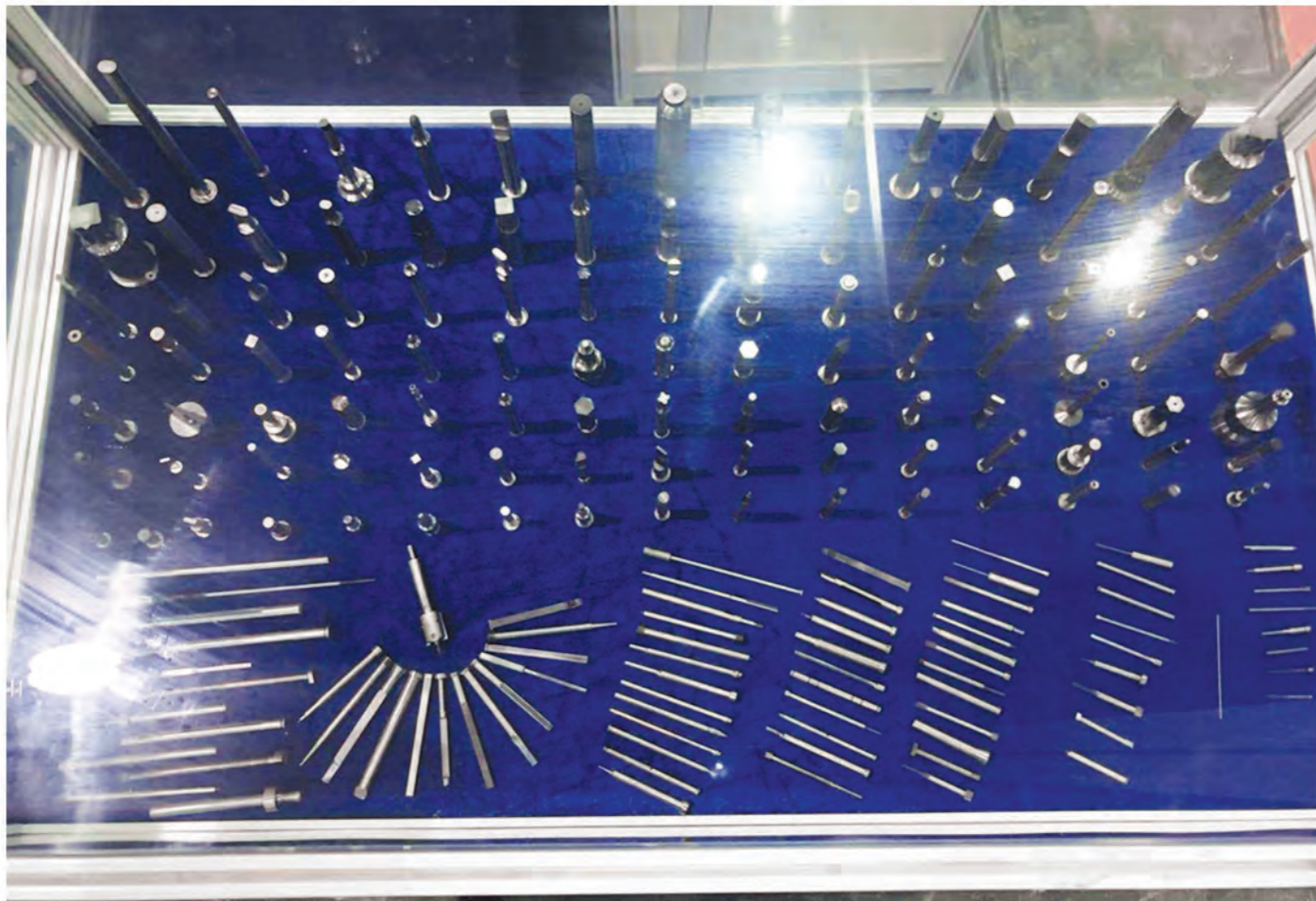


Our exhibition
(我們的展會)





Our exhibition (我們的展會)



大亚湾加工行业·先进企业

www.BaiSan.com
www.Duyou1418.com

BaiSan

BaiSan



为了提供高品质的产品和服务，我们引进了先进的加工设备，配备了专业的技术人员，为您提供最优质的产品和服务。

大亚湾加工行业·先进企业



我们拥有先进的加工设备，配备了专业的技术人员，为您提供最优质的产品和服务。

BaiSan



我们拥有先进的加工设备，配备了专业的技术人员，为您提供最优质的产品和服务。

BaiSan



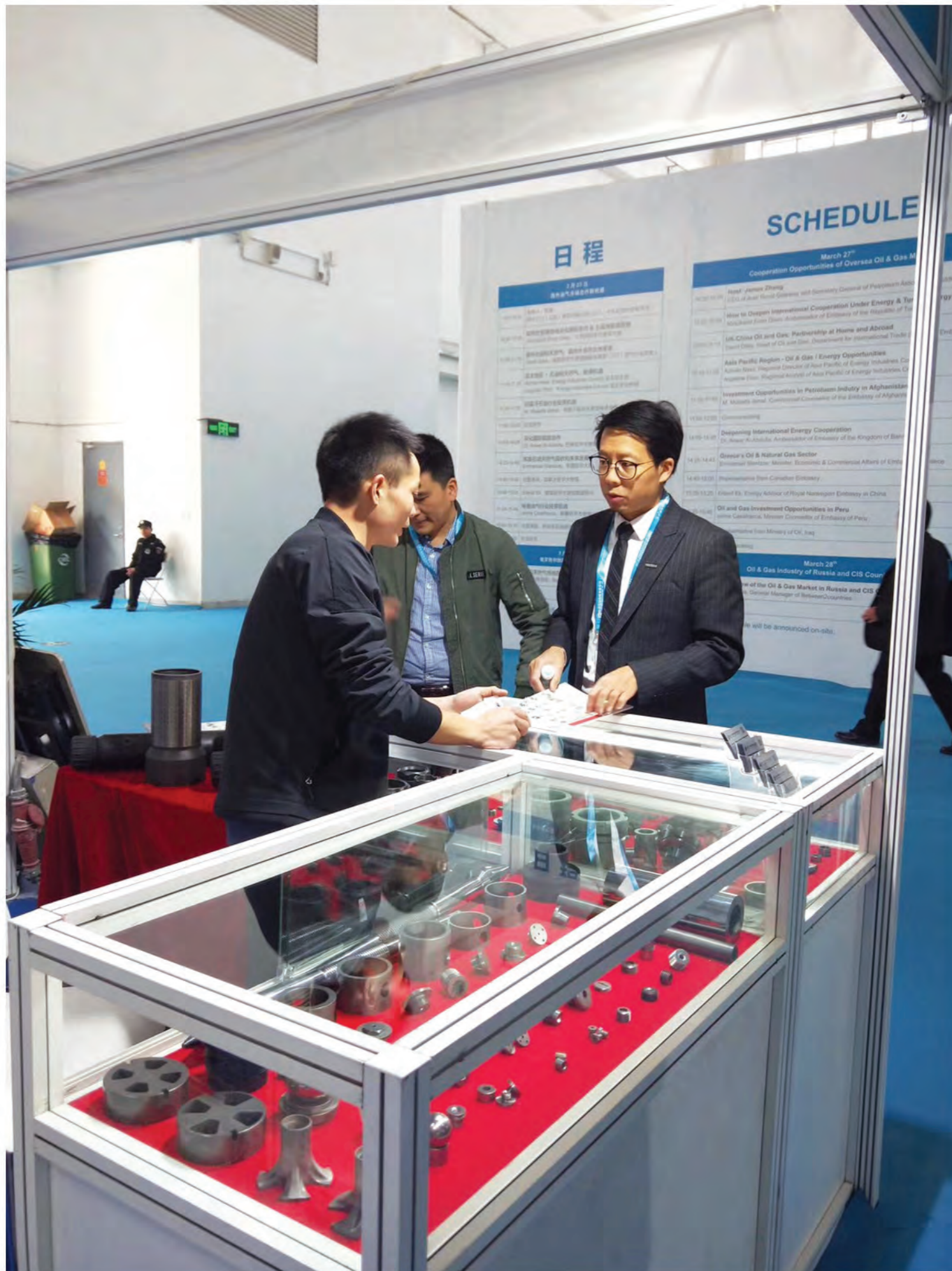
我们拥有先进的加工设备，配备了专业的技术人员，为您提供最优质的产品和服务。

BaiSan

BaiSan

Our exhibition

(我們的展會)



Our exhibition
(我們的展會)



Our exhibition
(我們的展會)



CERTIFICATE OF REGISTRATION

认证证书

大粤精工金属科技（东莞）有限公司

统一社会信用代码: 914419000537700416

东莞市大朗镇犀牛陂村甲田横一路2号

质量管理体系已完成评审并符合

GB/T19001-2016/ISO9001:2015

以下之认证范围

五金零配件、塑料零配件、模具配件、治具的设计、生产和销售

颁证日期: 2019年03月25日

有效日期: 2022年03月24日

首次签发证书日: 2019年03月25日

证书编号: U19Q2GZ8012812R0M



扫码查询证书有效性

获得本认证证书并不意味着证书持有者可以免除其应尽的其他法律义务, 当本认证范围中的产品或活动有行政许可要求时, 本证书仅在证书持有者的行政许可范围内有效。获证组织须定期接受 GIC 年度监督, 并经审核合格方继续有效。请扫描左侧二维码查询证书信息。本证书信息可在国家认证认可监督管理委员会官方网站 (www.cnca.gov.cn) 或 GIC 网站 (www.gicg.com.cn) 查询



GIC 微信公众号

证书签发:

Guardian Independent Certification Ltd

Registered in England

Sovereign House 212-224 Shaftesbury Avenue London England WC2H 8HQ

Accredited by Member of IAF MLA



0045



CERTIFICATE OF REGISTRATION

The Quality Management Systems of

Dayue Precision Technology Co., Ltd.

Unified Social Credit Code: 914419000537700416

No.2, Jiatian heng Rd, xiniupo Village, Dalang Town, Dongguan City

has been assessed by GIC and complying with

GB/T19001-2016/ISO9001:2015

For the following activities

Design, Manufacture and Sales of Hardware Parts, Plastic Parts, Mold Parts, Fixtures

Date of Issue: 25 March 2019

Date of Expiry: 24 March 2022

Date of Initial Certification: 25 March 2019

Certificate No.: U19Q2GZ8012812R0M



Scan for certificate status

The granting of this certificate does not mean that the certificate holder can avoid any legal obligation. If the products or activities covered in the scope of certification require administrative license, the certificate shall be only valid within the scope of administrative licensing. The registered organization shall be subject to regular annual supervision by GIC, and the continual validity of the certificate is base upon conformity of audit. Please scan two-dimension code at lift to find the certificate information. This certificate can be queried at Certification and Accreditation Administration of the People's Republic of China official website (www.cnca.gov.cn) & GIC website (www.gicg.com.cn)



GIC WeChat public number

Signature:

Guardian Independent Certification Ltd

Registered in England

Sovereign House 212-224 Shaftesbury Avenue London England WC2H 8HQ

Accredited by Member of IAF MLA



0045

Certificate

(證書)