

宁波晨源机械有限责任公司

Ningbo Chenyuan Machinery CO.,LTD



COMPANY PROFILE

宁波晨源机械有限责任公司位于北仑汽配园区、是一家汇集高新技术并有自主研发团队和专业设计员。公司采用德国技术与工艺加工产品与台资企业生产管理质量管理体系。

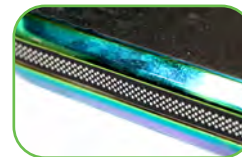
Ningbo Chenyuan Machinery CO.,LTD located in Beilun automobile accessories industrial zone , Is a collection of high-tech and independent R & D team and professional designers. Our company adopts German technical and technological processing products and the quality management system and production management of Taiwan-funded enterprises

公司目前生产几大块：极限运动产品、短途代步工具、工厂生产与技术在同行业中处于领先地位。拥有现代化加工设备与完善管理制度、保证了公司的产品质量以及共同发展。

For the moment .we are focus on extreme sport products,short distance travel tools, Factory production and technology are in the leading position in the same industry, With modern processing equipment and perfect management system, we guarantee the product' s quality and common development.

工厂地址：宁波市鄞州区五乡镇明伦村宝瞻路2号

Factory address: NO2 Baozhan Road ,Minglun village ,Wuxiang town ,Yingzhou district, Ningbo,Zhejiang



产品部件

车架/材料: 一体铝锻造前叉.车架.铝合金6061T6
 产品版本: 国产电池4AH
 颜色: 黑色/银色 /白色/七彩色
 最大速度: 25km/h
 耐力里程: 14-16km
 电池类型: 国产电芯18650
 电池容量: 4AH
 充电/可充电: 2小时/800次
 电机类型: 无刷轮毂电机
 电机功率: 180w
 灯: 前灯和后灯和LED带在两边
 刹车: 手把电子刹车后轮挡泥板电子刹车
 攀登角度: 10°
 轮胎类型: 前轮充气.后轮实心橡胶轮胎
 轮尺寸: 前轮6寸,后轮5寸
 展开的尺寸: 780*510*98mm
 折叠尺寸: 740*140*250mm
 最大负载: 95KG
 净重/毛重: 6.6KG/8.5KG

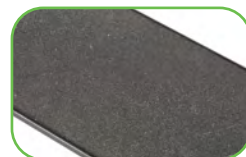
PRODUCT COMPONENTS

Frame /Material :Intergrated frame and fork,Alu6061
 Product Version:Chinese battery 4AH
 Color:Black/Silver/White/Neochrome
 Max speed:25KM/H
 Endurance Mileage:14-16KM
 Battery type: Chinese Power Lithium 18650 battery
 Battery capacity:4AH
 Charge time :2H
 Rechargeable :800times
 Motor power:180W
 Motor type: Brushless hub motor
 Light: Front & rear lights and LED strip on side
 Brake:Electric brake on handlebar & Electric brake on
 Rear Mudguard
 Climbing angle:10° Tyre type :Inflatable tyre(front), solid
 rubber tyre (back)
 Tyre size : 6 inch(front), 5 inch(back)
 Open size :780*510*98mm
 Fold size :740*140*250mm
 Max loading :95KG
 N/GW:6.6/8.5kg

NEW

MG2

电动滑板车



产品部件

车架/材料: 一体铝锻造前叉.车架.铝合金6061T6
 仪表: 隐藏仪表
 产品版本: 国产电池7.8AH
 颜色: 黑色/银色 /白色/七彩色
 最大速度: 25km/h
 耐力里程: 30km
 池类型: 国产电芯18650
 电池容量: 7.8AH
 充电/可充电: 3小时/800次
 电机类型: 无刷轮毂电机
 电机功率: 180w
 灯: 前灯和后灯和LED带在两边
 刹车: 手把电子刹车后轮挡泥板电子刹车
 攀登角度: 10°
 轮胎类型: 前轮充气.后轮实心橡胶轮胎
 轮尺寸: 前轮6寸,后轮5.5寸
 展开的尺寸: 850*540*910mm
 折叠尺寸: 850*150*345mm
 最大负载: 100KG
 净重/毛重: 8.2KG/9.5KG

PRODUCT COMPONENTS

Frame /Material :Intergrated frame and fork,Alu6061
 Display: Hidden
 Product Version:Chinese battery 7.8AH
 Color:Black/Silver/White/Neochrome
 Max speed:25KM/H
 Endurance Mileage:30KM
 Battery type: Chinese Power Lithium 18650 battery
 Battery capacity:7.8AH
 Charge time :3H
 Rechargeable :800times
 Motor power:180W
 Motor type: Brushless hub motor
 Light: Front & rear lights and LED strip on side
 Brake:Electric brake on handlebar & Electric brake on
 Rear Mudguard
 Climbing angle:10° Tyre type :Inflatable tyre(front), solid
 rubber tyre (back)
 Tyre size : 6 inch(front), 5.5inch(back)
 Open size :850*540*910mm
 Fold size :850*150*345mm
 Max loading :100KG
 N/GW:8.2KG/9.5KG



产品部件

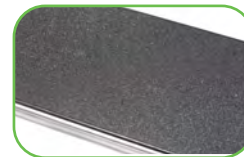
车架/材料: 一体铝锻造前叉.车架.铝合金6061T6
 仪表: 隐藏仪表
 产品版本: 国产电池7.8AH
 颜色: 黑色/银色 /白色/七彩色
 最大速度: 25km/h
 耐力里程: 30km
 电池类型: 国产电芯18650
 电池容量: 7.8AH
 充电/可充电: 3小时/800次
 电机类型: 无刷轮毂电机
 电机功率: 180w
 灯: 前灯和后灯和LED带在两边
 刹车: 手把电子刹车后轮挡泥板电子刹车
 登角度: 10°
 轮胎类型: 前后轮充气轮胎
 轮尺寸: 前后轮8.5寸
 展开的尺寸: 1000*540*1040mm
 折叠尺寸: 1000*150*390mm
 最大负载: 100KG
 净重/毛重: 10.8KG/12KG

PRODUCT COMPONENTS

Frame /Material :Intergrated frame and fork,Alu6061
 Display: Hidden
 Product Version:Chinese battery 7.8AH
 Color:Black/Silver/White/Neochrome
 Max speed:25KM/H
 Endurance Mileage:30KM
 Battery type: Chinese Power Lithium 18650 battery
 Battery capacity:7.8AH
 Charge time :3H
 Rechargeable :800times
 Motor power:180W
 Motor type: Brushless hub motor
 Light: Front & rear lights and LED strip on side
 Brake:Electric brake on handlebar & Electric brake on Rear Mudguard
 Climbing angle:10°
 Tyre type :Inflatable tyre(front and back)
 Tyre size : 8.5 inch(front), 8.5inch(back)
 Open size :1000*540*1040mm
 Fold size :1000*150*390mm
 Max loading :100KG
 N/GW:10.8KG/12KG

NEW

MG4-A 电动滑板车



产品部件

车架/材料: 一体铝锻造前叉.车架.铝合金6061T6
 仪表: 隐藏仪表
 产品版本: 国产电池7.8AH
 颜色: 黑色/银色/白色/七彩色
 最大速度: 25km/h
 耐力里程: 30km
 电池类型: 国产电芯18650
 电池容量: 7.8AH
 充电/可充电: 3小时/800次
 电机类型: 无刷轮毂电机
 电机功率: 300w
 减震: 前后隐藏双减震
 灯: 前灯和后灯和LED带在两边
 刹车: 手把机械电子刹车
 攀登角度: 10°
 轮胎类型: 前后轮充气轮胎
 轮尺寸: 前后轮8.5寸
 展开的尺寸: 1020*540*1040mm
 折叠尺寸: 1000*150*390mm
 最大负载: 120KG
 净重/毛重: 12.6KG/13.9KG

PRODUCT COMPONENTS

Frame /Material :Intergrated frame and fork,Alu6061
 Display: Hidden
 Product Version:Chinese battery 7.8AH
 Color:Black/Silver/White/Neochrome
 Max speed:25KM/H
 Endurance Mileage:30KM
 Battery type: Chinese Power Lithium 18650 battery
 Battery capacity:7.8AH
 Charge time :3H
 Rechargeable :800times
 Motor power:300W
 Motor type: Brushless hub motor
 Suspension: Front and rear hidden double shock absorption
 Light: Front & rear lights and LED strip on side
 Brake:Hand mechanical electronic brake
 Climbing angle:10°
 Tyre type :Inflatable tyre(front and back)
 Tyre size : 8.5 inch(front), 8.5inch(back)
 Open size :1020*540*1040mm
 Fold size :1000*150*390mm
 Max loading :120KG
 N/GW:12.6KG/13.9KG

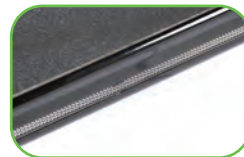


产品部件

车架/材料: 一体铝锻造前叉.车架.铝合金6061T6
 仪表: 隐藏仪表
 产品版本: 国产电池7.8AH
 颜色: 黑色/银色 /白色/七彩色
 最大速度: 25km/h
 耐力里程: 30km
 电池类型: 国产电芯18650
 电池容量: 7.8AH
 充电/可充电: 3小时/800次
 电机类型: 无刷轮毂电机
 电机功率: 500w
 减震: 前后隐藏双减震
 灯: 前灯和后灯和LED带在两边
 刹车: 前碟刹后机械刹车.刹车带玲瓏
 攀登角度: 10°
 轮胎类型: 前后轮充气轮胎
 轮尺寸: 前后轮8.5寸
 展开的尺寸: 1020*540*1040mm
 折叠尺寸: 1000*150*390mm
 最大负载: 120KG
 净重/毛重: 13.5KG/15KG

PRODUCT COMPONENTS

Frame /Material :Intergrated frame and fork,Alu6061
 Display: Hidden
 Product Version:Chinese battery 7.8AH
 Color:Black/Silver/White/Neochrome
 Max speed:25KM/H
 Endurance Mileage:30KM
 Battery type: Chinese Power Lithium 18650 battery
 Battery capacity:7.8AH
 Charge time :3H
 Rechargeable :800times
 Motor power:500W
 Motor type: Brushless hub motor Suspension: Front and rear hidden double shock absorption
 Light: Front & rear lights and LED strip on side
 Brake: Disk brake(front), mechanical brake(Back)
 Climbing angle:10°
 Tyre type :Inflatable tyre(front and back)
 Tyre size : 8.5 inch(front), 8.5inch(back)
 Open size :1020*540*1040mm
 Fold size :1000*150*390mm
 Max loading :120KG
 N/GW:13.5KG/15KG



产品部件

车架/材料: 一体铝锻造前叉.车架.铝合金6061T6
 仪表: 隐藏仪表
 产品版本: 国产电池7.8AH
 颜色: 黑色/银色/白色/七彩色
 最大速度: 25km/h
 耐力里程: 30km
 电池类型: 国产电芯18650
 电池容量: 7.8AH
 充电/可充电: 3小时/800次
 电机类型: 无刷轮毂电机
 电机功率: 800w
 减震: 前后隐藏双减震
 灯: 前灯和后灯和LED带在两边
 刹车: 前碟刹后机械刹车.刹车带玲珑
 攀登角度: 10°
 轮胎类型: 前后轮充气轮胎
 轮尺寸: 前后轮10寸
 展开的尺寸: 1150*540*1040mm
 折叠尺寸: 1150*170*390mm
 最大负载: 120KG
 净重/毛重: 18.5KG/20KG

PRODUCT COMPONENTS

Frame /Material :Intergrated frame and fork,Alu6061
 Display: Hidden
 Product Version:Chinese battery 7.8AH
 Color:Black/Silver/White/Neochrome
 Max speed:25KM/H
 Endurance Mileage:30KM
 Battery type: Chinese Power Lithium 18650 battery
 Battery capacity:7.8AH
 Charge time :3H
 Rechargeable :800times
 Motor power:800W
 Motor type: Brushless hub motor
 Suspension: Front and rear hidden double shock absorption
 Light: Front & rear lights and LED strip on side
 Brake:Disk brake(front), mechanical brake(Back)
 Climbing angle:10°
 Tyre type :Inflatable tyre(front and back)
 Tyre size : 10 inch(front), 10inch(back)
 Open size :1150*540*1040mm
 Fold size :1150*170*390mm
 Max loading :120KG
 N/GW:18.5KG/20KG



产品部件

底板：6061铝，尺寸：500*113MM，焊
接角度：82.5 ° T4/T6热处理
T把：铁，尺寸：550*500MM
把塞：尼龙
夹子：俩槽夹，6061铝
叉子：6061铝
手握：TPR
PU：高弹PU
轮芯：6061铝
车头碗：一体碗组
刹车片：铁
防滑贴：砂纸
系统：IHC
承重：100KG

PRODUCT COMPONENTS

Handlebar : steel 550*500MM ,
welding,82.5 degree
Deck: 6061 Alu500*113MM
Wheel:110*24mm, Alu spoke core,
Wheel Hardness:88A
Fork:Steel
Clamp:Double clamp
Brake:rear flex brake,steel
Headset:Intergrated
Compression:IHC
Grip:High quality TPR Rubber
Grip tape:Sanded paper material
Bearing:ABEC-7
Foldable:NO
Max loading:100kg
Packing:1pc/color box.4pcs/carton

NEW

ME2

极限滑板车



产品部件

底板：6061铝，尺寸：530*115MM，
 焊接角度：82.5 ° T4/T6热处理
 T把：6061铝，尺寸：600*600MM
 把塞：尼龙
 夹子：三孔夹子，6061铝
 叉子：6061铝
 手握：TPR
 PU：高弹PU
 轮芯：6061铝
 车头碗：一体碗组
 刹车片：6061铝
 防滑贴：砂纸
 系统：IHC
 承重：100KG

PRODUCT COMPONENTS

Deck:Alu 6061 T6,front welding,82.5
 degree,530*115mm,
 T-bar:Alu 6061 T6,600*600mm
 Wheel:110mm, Alu spoke core
 Fork:Alu 6061-T6
 Clamp:Three hole clamp
 Brake:Rear flex brake,alu
 Headset:integrated
 Compression:IHC
 Grip:High quality TPR Rubber
 Grip tape:Sanded paper material
 Bearing:ABEC-7
 Foldable:NO
 Max loading:100kg
 Packing:1pc/color box.4pcs/carton



产品部件

底板：6061铝，尺寸：530*115MM，
焊接角度：82.5 ° T4/T6热处理
T把：4130珪钼钢，尺寸：600*600MM
把塞：尼龙
夹子：三孔夹子，6061铝
叉子：6061铝
手握：TPR
PU：高弹PU
轮芯：6061铝
车头碗：一体碗组
刹车片：6061铝
防滑贴：砂纸
系统：HIC
承重：100KG

PRODUCT COMPONENTS

Deck:Alu 6061 T6,front welding,82.5
degree,530*115mm,
T-bar:Chromoly4130,600*600mm
Wheel:110mm, Alu core
Fork: Alu 6061
Clamp:Three hole clamp
Brake:Rear flex brake,alu6061
Headset:integrated
Compression:HIC
Grip:High quality TPR Rubber
Grip tape:Sanded paper material
Bearing:ABEC-7
Foldable:NO
Max loading:100kg
Packing:1pc/color box.4pcs/carton

NEW

ME4

极限滑板车



产品部件

底板：6061铝，尺寸：540*120MM，
 焊接角度：82.5 ° T4/T6热处理
 T把：6061铝，尺寸：600*600MM
 把塞：尼龙
 夹子：三孔夹子，6061铝
 叉子：6061铝
 手握：TPR
 PU：高弹PU
 轮芯：6061铝
 车头碗：一体碗组
 刹车片：铁
 防滑贴：砂纸
 系统：IHC
 承重：100KG

PRODUCT COMPONENTS

Deck:Alu 6061 T6,front welding,82.5
 degree,540*120mm,
 -bar:Alu 6061 T6,600*600mm
 Wheel:110mm, spoke wheel core
 Fork:Alu 6061 6061-T6
 Clamp:Three hole clamp
 Brake:rear flex brake,steel
 Headset:integrated
 Compression:IHC
 Grip:High quality TPR Rubber
 Grip tape:Sanded paper material
 Bearing:ABEC-7
 Foldable:NO
 Max loading:100kg
 Packing:1pc/color box.4pcs/carton



产品部件

底板：6061铝，尺寸：540*120MM，
 焊接角度：82.5 ° T4/T6热处理
 T把：4130珞钼钢，尺寸：600*600MM
 把塞：尼龙
 夹子：三孔夹子，6061铝
 叉子：6061铝
 手握：TPR
 PU：高弹PU
 轮芯：6061铝
 车头碗：一体碗组
 刹车片：6061铝
 防滑贴：砂纸
 系统：HIC
 承重：100KG

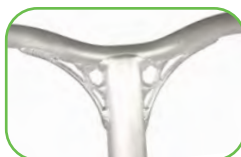
PRODUCT COMPONENTS

Deck:Alu 6061 T6,front welding,82.5
 degree,540*120mm,
 T-bar:Chromoly 4130,600*600mm
 Wheel:110mm, Alu spoke core
 Fork:Aluminium 6061-T6
 Clamp:Three hole clamp
 Brake:rear flex brake,steel
 Headset:integrated
 Compression:HIC
 Grip:High quality TPR Rubber
 Grip tape:Sanded paper material
 Bearing:ABEC-7
 Foldable:NO
 Max loading:100kg
 Packing:1pc/color box.4pcs/carton

NEW

ME6

极限滑板车



产品部件

底板：6061铝，尺寸：540*120MM，
 焊接角度：82.5 ° T4/T6热处理
 T把：6061铝，尺寸：560*560MM
 把塞：尼龙
 夹子：三孔夹子，6061铝
 叉子：6061铝
 手握：TPR
 PU：高弹PU
 轮芯：6061铝
 车头碗：一体碗组
 铁片：6061铝
 防滑贴：砂纸
 系统：IHC
 承重：100KG

PRODUCT COMPONENTS

Deck:Alu 6061 T6,front welding,82.5
 degree,540*120mm,
 T-bar:Alu 6061,560*560mm
 Wheel:110mm, Alu spoke core
 Fork:Alu 6061-T6
 Clamp:Three hole clamp
 Brake:rear flex brake,steel
 Headset:integrated
 Compression:IHC
 Grip:High quality TPR Rubber
 Grip tape:Sanded paper material
 Bearing:ABEC-7
 Foldable:NO
 Max loading:100kg
 Packing:1pc/color box.4pcs/carton

手握 Handgrip



把手 Handlebar



底板 Deck



轮子 PU Wheel



车头碗 Headset



夹子 Clamp



前叉 Front fork





地址ADD：浙江省宁波市鄞州区五乡镇明伦村宝瞻路2号

电话：+86 13967860231 +86 18969862020

传真：0574-88328923

邮箱：gao@cncysport.com

网址：www.cncysport.com

Add: NO2 Baozhan Road ,Minglun village ,Wuxiang town ,Yingzhou district, Ningbo,Zhejiang

Tel: +86 13967860231 +86 18969862020

FAX: 0574-88328923

E-MAIL: gao@cncysport.com

HTTP: www. cncysport. com