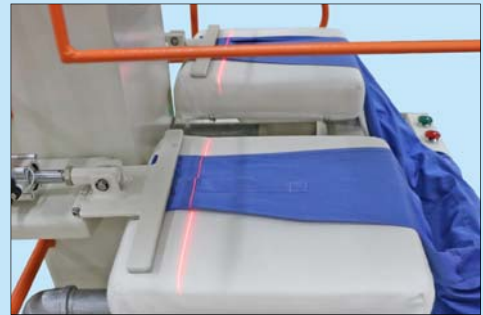
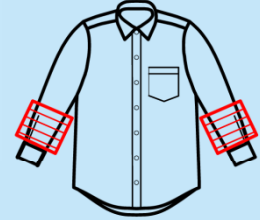


# NS-8411-C 雙頭袖褶壓平機 Double Head Sleeve Pleat Press



操作中 In Operation

- 適用於襯衫雙袖褶防皺壓熨
- 採用PLC可編程控制器控制及人性化操作界面觸摸顯示屏操作
- 垂直加壓方式，壓力分佈均勻，壓熨更平整
- 輕壓、重壓兩種壓熨方式供選擇設定，可滿足不同面料要求
- 鐳射燈輔助定位可使放料快速準確，壓布夾可防止布料移位並提升壓熨質量
- 採用雙上模和雙下模，兩邊獨立控制，方便操作和提高工作效率
- 上模加熱採用兩個獨立數字式溫度控制器控制，溫度控制精確
- 下模可抽濕（需另購真空抽濕泵），有助衣物定位、冷卻，定型效果佳

**選購件:**

NS-3400 系列真空抽濕泵

- Suitable for shirt sleeve pleat wrinkle-free pressing
- Adopt PLC and user friendly touch screen for operation
- Vertical pressing provides uniform pressure distribution and smooth effect
- Two pressing modes, i.e. light press and heavy press, are available for selection to cater for different fabrics
- Laser marker enables accurate and quick material laying; clamp prevents material shift and enhances pressing quality
- Double upper and lower moulds are independently operated, convenient operation and high efficiency
- With two independent digital thermostats for accurate temperature control of upper mould
- The lower mould can vacuum (**need to purchase a vacuum pump additionally**) for garment fixing, cooling and shaping

**Option:**

NS-3400 series vacuum pump

型號 Model	電源 Power Supply	總功率(kW) Total Power	發熱線功率(kW) Heater Power	工作檯平均壓力(kgf/cm <sup>2</sup> ) Average Working Platform Pressure	壓縮空氣壓力(kgf/cm <sup>2</sup> ) Compressed Air Pressure	耗壓縮空氣量(L/min) Compressed Air Consumption	機身尺寸(mm) Machine Size
NS-8411-C	3PH/380V/50Hz	2	1.8	3	5	100	1300x950x2150



**藝誠(余氏)發展有限公司**  
Ngai Shing Development Limited

香港九龍長沙灣永康街52號地下

G/F., 52 Wing Hong St.,

Cheung Sha Wan, Kln., Hong Kong.

Tel : (852) 2741 9981, 2742 0078

E-MAIL: info@ngaishing.com

Fax: (852) 2785 3149

Http://www.ngaishing.com