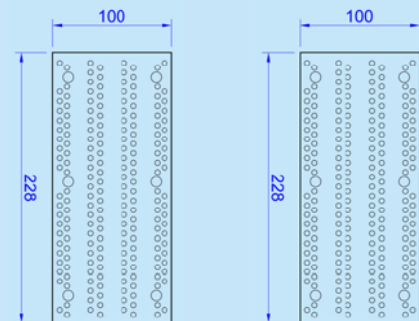


# NS-8403P 雙頭側袖筒壓平機 Sleeve Placket Press-Double Head



操作中  
In Operation



下模尺寸圖  
Lower Mould Dimensions

- 適用於襯衫側袖筒裁片粘合壓熨
- 採用PLC可編程控制器控制及人性化觸摸顯示屏操作
- 垂直加壓方式，壓力分佈均勻，壓熨更平整
- 微壓、輕壓、脈沖、重壓四種壓熨方式供選擇設定，可滿足不同面料需求
- 上、下模加熱採用四個數字式溫度控制器控制，溫度控制精確
- 設有物料夾，物料擺放方便
- 備有獨立真空抽濕泵，有助衣物定位、冷卻，定型效果佳

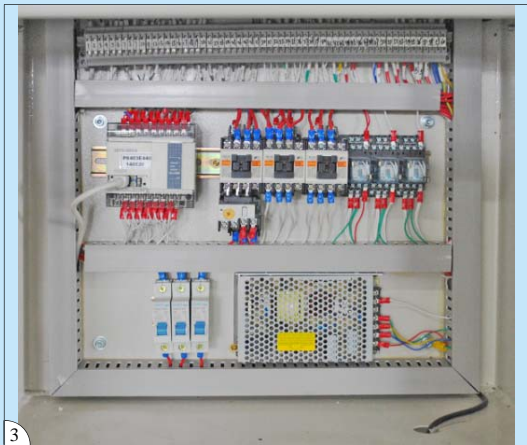
#### 選購件:

O-J-01-6 吹風冷卻系統(壓縮空氣)

- Suitable for shirt sleeve placket fusing and pressing
- Adopt PLC and user friendly touch screen for operation
- Vertical pressing mode provides uniform pressure distribution and smooth effect
- Four pressing modes, i.e. slight press, light press, pulse press and heavy press, are available for selection to cater for different fabrics
- With four independent digital thermostats for accurate temperature control of upper and lower moulds
- Equipped with material clip to assist fabric laying
- With independent vacuum pump to facilitate garment fixing, cooling and shaping

#### Option:

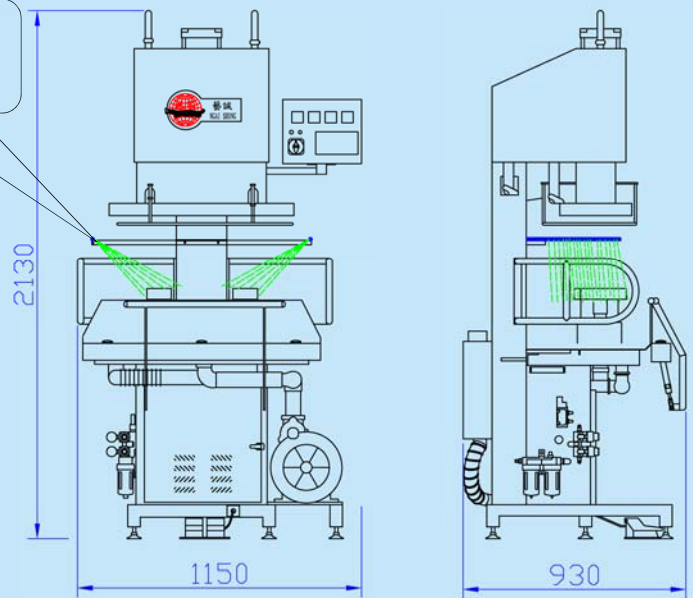
O-J-01-6 Compressed air blowing cool down system



選購件 Option: O-J-01-6  
吹風/冷卻系統(壓縮空氣)  
Compressed air blowing  
cool down system

1. 下模備有發熱線，熱傳導快
2. 設有物料夾，物料擺放方便
3. 優質電器元件
4. 獨立真空抽濕泵，有助衣物定位、冷卻，定型效果佳

1. Lower mould is equipped with heater for fast heat transfer
2. With material clip to assist fabric laying
3. High quality electric elements
4. Independent vacuum pump for garment positioning, cooling and shaping



型號 Model	電源 Power Supply	總功率(kW) Total Power	發熱線功率 (kW) Heater Power	真空泵功率(kW) Vacuum Pump Power	壓縮空氣壓力(kgf/cm <sup>2</sup> ) Compressed Air Pressure	耗壓縮空氣量(L/min) Compressed Air Consumption	平均粘合壓力(kgf/cm <sup>2</sup> ) Average Fusing Pressure	機身尺寸(mm) Machine Size
NS-8403P	3PH/380V/50Hz	4.2	3	1.1	5	100	2.5	1150x930x2130



藝誠(余氏)發展有限公司  
Ngai Shing Development Limited

香港九龍長沙灣永康街52號地下  
G/F., 52 Wing Hong St.,  
Cheung Sha Wan, Kln., Hong Kong.

Tel: (852) 2741 9981, 2742 0078 E-MAIL: info@ngaishing.com  
Fax: (852) 2785 3149 Http://www.ngaishing.com