




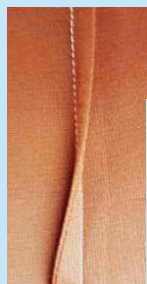


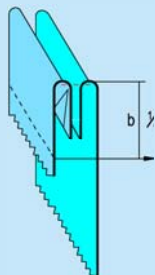
NS-6061J-1 來去縫縫紉機 French Seam Sewing Machine



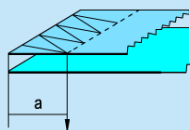
	 2	 3500RPM	 DBx1 #12	
---	--	--	---	---



效果图
Finished result



本工序b
This procedure



上工序a
Last procedure a



- 適用於車縫來去縫
- 採用獨特的垂直車頭安裝方式，雙手車縫，操作方便，效率高
- 採用PLC可編程控制器控制及人性化操作界面觸摸顯示屏操作
- 增加氣動衣物輔助定位托架和固定座，縫制會自然平均分開左右兩邊
- 增加擺桿式拖輪，輔助布料平穩運行，提高車縫質量及生產效率
- 可根據車頭需要啟動吹風系統
- 來去縫標準出廠值設定為 1/4"

跟機件：

縫紉機(JUKI DDL-8000A-SMSOBK)

- Suitable for French seam sewing
- Vertically mounted sewing head, two-hand operation, high efficiency
- Adopt PLC and touch screen for operation
- Pneumatic positioning support and locating seat can evenly separate left and right sides
- Enhanced quality and efficiency by adding a swing rod type puller to stabilize fabric movement
- Can use air blowing system when sewing label
- French seam standard factory set value: 1/4"

Standard:

Sewing (JUKI DDL-8000A-SMSOBK)

型號 Model	適用衣車頭機型 Applicable Sewing Head Model	電源 Power Supply	總功率(kW) Total Power	壓縮空氣壓力(kgf/cm ²) Compressed Air Pressure	耗壓縮空氣量(L/min) Compressed Air Consumption	淨重(kg) Net Weight	機身尺寸(mm) Machine Size
NS-6061J-1	JUKI DDL-8000A	1PH/220V/50Hz	0.55	5	10	125	1025x800x1770



藝誠(余氏)發展有限公司
Ngai Shing Development Limited

香港九龍長沙灣永康街52號地下

G/F., 52 Wing Hong St.,

Cheung Sha Wan, Kln., Hong Kong.

Tel: (852)2741 9981, 2742 0078

E-MAIL: info@ngaishing.com

Fax: (852)2785 3149

Http://www.ngaishing.com