



**OUCO 欧超**

### **Our version:**

To deliver the best possible products for the best possible price and quality. We are competitive as we have low labor cost, and deliver quality because we use European components in our products.

The designing and building process is guided and monitored by a team with knowledge and rich experience about all subjects involved.

### **Our main goal:**

Not only to deliver a good product, by experience we know that an equipment is a one time investment for a client and how important it is to do repairs at location in a short time as most clients have to deal with a high day-rate from their vessels and working fields; "Down-time" is expensive.



## Company profile

OUCO Industry, was established in February 1982, covers an area of 48,000 square meters, construction area is 35,000 square meters.

OUCO headquartered in crane hometown of Jiangsu Province where representing most advanced machinery manufacturing level in China.

OUCO has more than 150 employees, 20 are technical staff. Among that has five senior titles, 10 mid-level titles, and a total of 50 welders (who has got CCS, ABS and other main institutions' certification). It also has professional organization certificated flaw detection staff, the quality system audit staff, and inspection personnel, etc.



OUCO provides high quality handling solutions and access systems for the crane, port industries and various non-standard structural parts. OUCO has its own developing, designing, and manufacturing capacity for products of metallurgical complete sets of equipment, marine cranes, truck cranes, boiler desulfurization and denitrification environmental protection products in air pollution control field. Company products are widely used in the metallurgical, ship, port, electricity, petroleum, building materials and chemical industries.

OUCO has subsidiaries in several countries and serves a global client based on strategic points in Europe, Asia, Africa, Australia and Middle East. It has an annual output of 11,000 tons of steel structure production capacity.

**O**RGANIZED TEAMWORK  
**U**NIQUE QUALITY  
**C**OMPETITIVE PRICE  
**O**UTSTANDING SERVICE

**OUCO 欧超**  
[www.ouco-industry.com](http://www.ouco-industry.com)



360° Virtual Factory Tour



**OUCO 欧超**

## OUCO Truck Mounted Crane

OUCO truck mounted crane type is with great heavy duty up to 250 meter tons, which can be used in various fields of services to achieve clients' requirements. OUCO Truck Mounted Cranes contains important industries include: construction, transport logistics, emergency services, local authorities, waste management, mining and the inspection/maintenance/cleaning of structures, buildings and large machines as well as leasing and rental business.

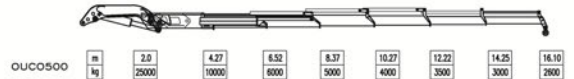
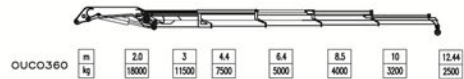
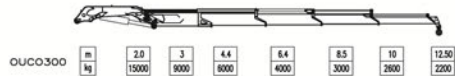
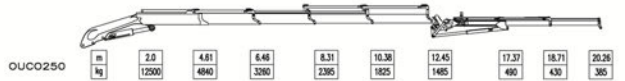
### Product Feature

1. Full Power Boom: Driving and telescoping under load;
2. Lifting capacity from 15 t to 250 t;
3. Simple and robust design – long lifetime;
4. Low transportation costs with shortest rigging time possible;
5. Suitable for very difficult ground conditions;
6. Compact design and dimensions.



## Folding Boom Truck Crane

Model	Max.Lifting Moment(T.M)	Max.Lifting Capacity(kg/m)	Max.Working Radius(m)	Max.Lifting Height(m)	Dead Weight(kg)
OUCO-250	20	12500/2	12.46	13.46	4300
OUCO-300	30	15000/2	12.46	13.46	4500
OUCO-360	36	18000/2	12.46	13.46	4700
OUCO-430	43	20000/2	15.1	16.1	5900
OUCO-500	50	25000/2	16.1	17.1	6100
OUCO-600	60	30000/2	16.1	17.1	6450
OUCO-700	70	35000/2	16.1	17.1	6750



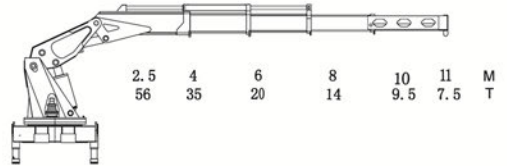


## Semi-Knuckle Boom Truck Crane

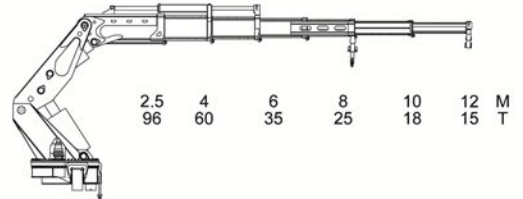
Model	Max.Lifting Moment(T.M)	Max.Lifting Capacity(kg/m)	Max.Working Radius(m)	Max.Lifting Height(m)	Dead Weight(kg)
OUCO-1400-4	120	30000/4.5	11	14	11500
OUCO-2400-6	240	60000/4.5	13.83	17.2	20000
OUCO-3600-6	360	80000/4.5	13.83	17.2	24000
OUCO-5000-6	500	120000/4.5	13.83	21	26000
OUCO-6000-6	600	140000/4.5	13.83	14.5	55000



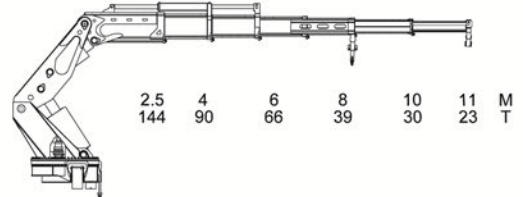
OUCO 1400-4



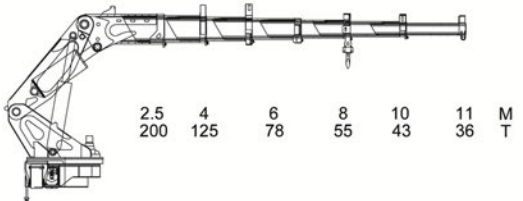
OUCO 2400-6



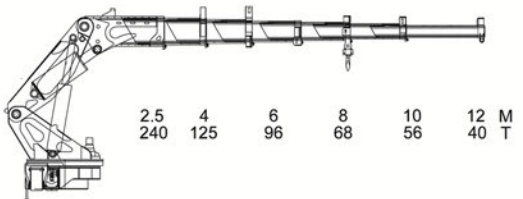
OUCO 3600-6



OUCO 5000-6



OUCO 6000-6





## Telescopic Boom Truck Crane

Model	Max.Lifting Moment(T.M)	Max.Lifting Capacity(kg/m)	Max.Working Radius(m)	Max.Lifting Height(m)	Dead Weight(kg)
OUCO-SQ3Z	8	3200	8.1	9.1	1150
OUCO-SQ4Z	10	4000	9.8	10.8	1220
OUCO-SQ5Z	12.5	5000	11.6	12.6	1900
OUCO-SQ6Z	15	6000	11.6	12.6	2100
OUCO-SQ8Z	20	8000	12.8	13.8	3500
OUCO-SQ10Z	25	10000	12.8	13.8	4000
OUCO-SQ12Z	30	12000	15.4	16.4	4500

