

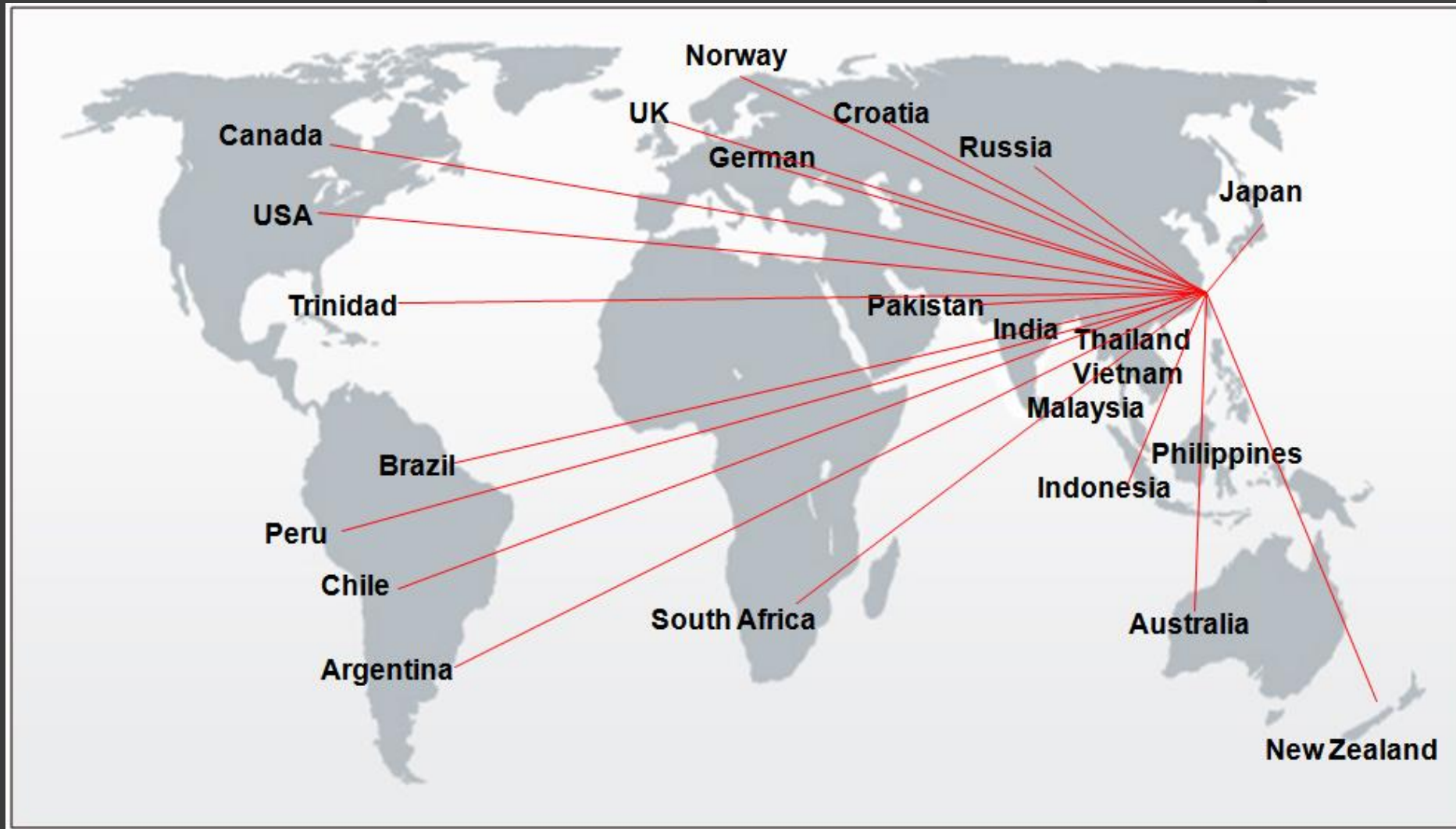


Hard Answers for Tough Challenges

HUIFENG

WEAR RESISTANT INDUSTRIAL GROUP

HP WORLDWIDE DISTRIBUTION MAP



ISO CERTIFICATE

VAUTID & HUIFENG WEAR RESISTANT MATERIAL CO., LTD


QMS CERTIFICATE

Registration No.: 02518Q30349R0S

VAUTID & HUIFENG (Wuhu) Wear Resistant Material Co.,Ltd
(Code of the unified social credit identifier: 913402006679246582)
**Weisan Road, Industrial Street, Mechanical Industrial Park, Wuhu County,
Wuhu City, Anhui Province China.**
Zip code: 241100

Has been found to comply with
GB/T19001-2016 idt ISO9001:2015
"Quality management systems - Requirements"

This registration is subject to the following area
**Weisan Road, Industrial Street, Mechanical Industrial Park, Wuhu
County, Wuhu City, Anhui Province China 241100 (VAUTID & HUIFENG
(Wuhu) Wear Resistant Material Co.,Ltd.) Manufacture of Wear Resisting
Flux Cored Wire.**

Approved organization will be monitored annually by GJC, and this certificate is valid, when
surveillance tag has been stuck to specified site on it, Effective certificate would be inquired
to www.cnca.gov.cn or www.gj-c.cn.

Initial Issuing Date: Aug 10, 2018 General Manager: 
Valid Period: Aug 10, 2018 ~ Aug 09, 2021

surveillance
tag site

surveillance
tag site


QMS
CERTIFICATION


MEMBER OF MULTILATERAL
RECOGNITION ARRANGEMENT


MANAGEMENT
SYSTEM
CNAS C025-M



BEIJING GUOJIANLIANXIN CERTIFICATION CENTER, LTD
Add: No.11, Sanlithe Road, Haidian District, Beijing, China (100631) <http://www.gj-c.cn>

ISO CERTIFICATE

WUHU HUIFENG WEAR RESISTANT CO., LTD



QMS CERTIFICATE

Registration No.: 02518Q30348R0S

WuHu HuiFeng Wear Resistant Ind. Co., Ltd

(Code of the unified social credit identifier: 9134020078106249XF)

**Weisan Road, Industrial Street. Mechanical Industrial Park, Wuhu County,
Wuhu City, Anhui Province China.**

Zip code: 241100

Has been found to comply with

GB/T19001-2016 idt ISO9001:2015

"Quality management systems - Requirements"

This registration is subject to the following area

**Weisan Road, Industrial Street. Mechanical Industrial Park, Wuhu
County, Wuhu City, Anhui Province China WuHu HuiFeng Wear Resistant
Ind. Co., Ltd Manufacture of Handfacing Welding & Wear Resisting Steel
Plate.**

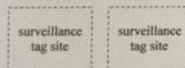
Approved organization will be monitored annually by GJC, and this certificate is valid, when
surveillance tag has been stuck to specified site on it, Effective certificate would be inquired
to www.cnca.gov.cn or www.gj-c.cn.

Initial Issuing Date: **Aug 10, 2018**

Valid Period: **Aug 10, 2018 ~ Aug 09, 2021**

General Manager:

武法涛



QMS
CERTIFICATION



MANAGEMENT
SYSTEM
CNAS C025-M



BEIJING GUOJIANLIANXIN CERTIFICATION CENTER, LTD
Add: No.11, Sanlihe Road, Haidian District, Beijing, China (100831) <http://www.gj-c.cn>

CHEMICAL ANALYSIS REPORT

V100MO WELDING WIRE



安徽省钢铁材料质量监督检验二站

检 验 报 告

2013120115E ✓
(皖)皖省质检二字 N-089 号

共 1 页 第 1 页

受检单位	法奥施惠干(芜湖)耐磨焊材有限公司	样品名称	V-100Mo耐磨焊材
检验依据	GB/T 11170-2008	样品规格	25×25×30
检验性质	委托检验	样品批号	14-021-32
送样人	董晓永	样品数量	1件
产品编号	F101-06-10033	样品特性和状态	块状,符合要求
送检日期	2014.01.20	检验日期	2014.01.20

检 测 项 目 和 结 果

检测项目	仪器设备	温度 (℃)	湿度 (%)	检测方法	标准值	实测值	判定
化学 成分 (%)	1764/3M14960 光谱分析仪	22	40	GB/T 11170-2008	—	5.34	/
					—	0.90	/
					—	0.40	/
					—	26.43	/
					—	0.93	/
					—	0.28	/

检 验 结 论

说 明		主 检	王明
1. 非本实验室检测样品, 除改无效;		中 核	王明
2. 报告无主检、审核、批准签字或盖章及检验专用章无效;		批 准	王明
3. 如对本报告有疑问或不详可以同本实验室查询;		发 行	王明
4. 未经本实验室同意不得复制报告, 复制报告未重新加盖 检验报告专用章无效;		检 验 报 告 专 用 章	王明
5. 如对本报告有异议, 可以自收到检验报告之日起 15日内向实施检测的产品质量监督部门提出;		发 行 日 期	2014 年 1 月 20 日
6. 判定符号“√”表示合格, “×”表示不合格。		地址	安徽省合肥市合裕路441号
编号: 1302011009200031867		邮编	230011 电话: 0551-64401399; 0551-64402019
开户行: 工行合肥分行			

HP WELDING

WEAR RESISTANCE & HARDNESS TEST BY ASTM HP700 PLATE

中華民國高雄市中興路 811 高橋公路 1001 號
1001, Kaonan Highway, Nantzu 81103, Kaohsiung, Taiwan, R.O.C.
Tel.: 886-7-3513120 (20 線) Fax: 886-7-3533382

金屬工業研究發展中心
METAL INDUSTRIES RESEARCH & DEVELOPMENT CENTRE

試驗報告表

TESTING REPORT

委託者: 沿平興業股份有限公司 取樣者: --
工程名稱: HP-700 磨耗&硬度測試 工令編號: 金焊字第 F032MD70-05 號
Name of project: Job No.
來樣日期: 2013.03.19 簽發日期: 2013.03.24
Date of article received: Date of issued
試驗項目: 磨料磨耗&硬度試驗

一、試驗條件說明

參照試驗規範為 ASTM G65-04, "Standard Test Method for Measuring Abrasion Using the Dry Sand/Rubber Wheel Apparatus"

測試程序: Procedure A

研磨砂材: A.F.S.50~70 標準試驗砂

接觸正向壓力 (Force Against Specimen): 130N (30lb)

試驗轉速 (Wheel Revolutions): 200 r.p.m.

總試驗轉數 (Total Wheel Revolutions): 6000 轉

落砂流量: 350g/min

密度: 7.65 g/cm³ (廠商提供之數值)

試驗材料: HP-700

二、試驗結果

試片材質編號	試片重量(g)		磨耗量(g)	體積損失(mm ³) (Volume Loss) (Mass Loss / Density) * 1000	修正後體積損失(mm ³) (Adjusted Volume Loss) (Volume Loss * 228.6/216.5)
	試驗前 (Initial Mass)	6000 轉後 (Final Mass)			
HP-700_01	178.4994	178.4116	0.0878	11.48	12.12
HP-700_02	178.6256	178.5284	0.0972	12.71	13.42
試片材質編號	硬度(HRC)				硬度平均值(HRC)
HP-700_01	58.2、58.0、58.5、58.8、61.8				59.06
HP-700_02	59.3、60.4、60.3、60.1、58.2				59.66

註: 1. 試片材質編號依委託試驗單位標示列入。

2. 本批試片之試驗, 鋼輪外徑為φ216.5mm。

-blank-

注意: 本報告僅對送驗樣品負責。

Note: This report is responsible for designated samples only.

組長 吳隆佃 工程師
Manager Engineer



PRODUCTS

FLUX CORED WIRE (VAUTID)



Production capacity at 6 tons / day

PRODUCTION LINE



FLUX CORED WIRE (WELDING ALLOY RECIPE)

Production capacity at 9 tons / day



FLUX CORED WIRE (STOODY RECIPE)

Production capacity at 9 tons / day

PRODUCTS

FLUX CORED WIRE



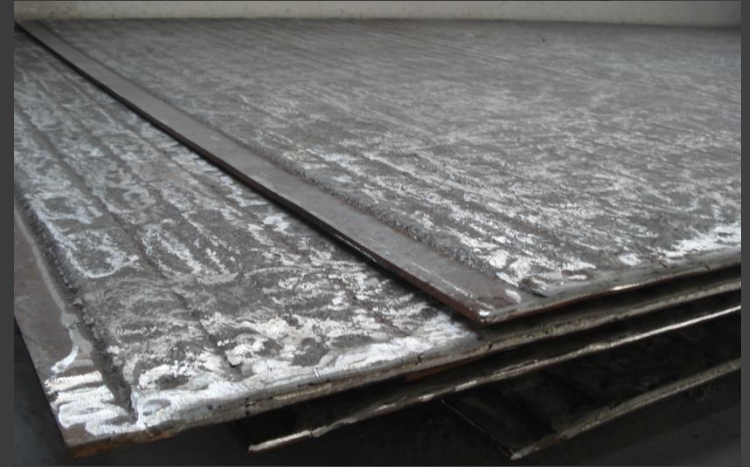
HP Wear Resistant Plate

The spec, components and application of HP welding wire models

Item	Craft	spec (mm)	Chemical composition								Hardness grade(HRC)	Applications
			C	Si	Mn	Cr	Mo	B	Others	Fe	6 Layers	
HP-280Mo	Open Arc Welding	Φ2.8	4.5	0.8	0.6	28	1.0			Balance	58~62	Recondition On Raw Mill, Coal Mill, Wear Plate
HP-280	Open Arc Welding	Φ2.8	4.8	0.8	0.6	28			Ni:0.15	Balance	58~62	Recondition On Raw Mill, Coal Mill, Wear Plate
HP-252B	Open Arc Welding	Φ2.8	5.0	0.8	0.6	25		0.7		Balance	59~62	Wear Resistant Plate
HP-252B+	Open Arc Welding	Φ2.8	5.0	0.8	0.6	25		0.7		Balance	59~64	Super Wear Resistant Plate
HP-1996	Open Arc Welding	Φ2.8	0.08	0.8	6.5	19.8			Ni:9.0	Balance	HB180~220	Buffer Deposit On Roller
HP-250	Open Arc Welding	Φ2.8	0.11	0.7	1.5	1.5	0.2			Balance	24~32	Build Up Deposit On Roller

PRODUCTS

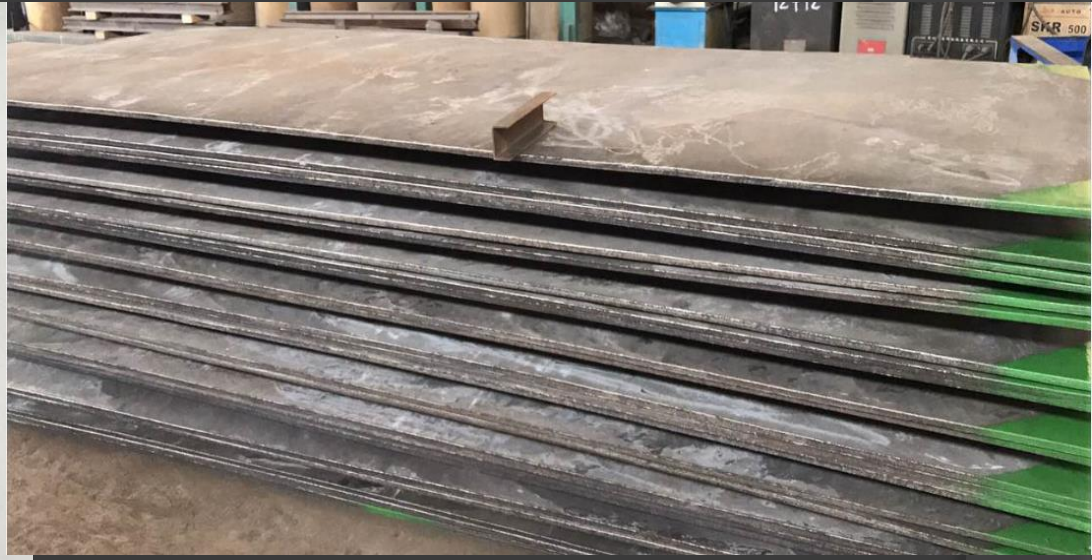
OVERLAY WEAR PLATE



Annual production capacity of
300,000 square meter

PRODUCTS

Smooth Surface Wear Plate



PRODUCTS

OVERLAY WEAR PLATE

HP WELDING

HP Wear Resistant Plate

HP Plate Product Range

Chemical Models	C	Cr	Mn	Si	Nb	W	B	Mo	V	HRC Range	Remark
HP-700	4.5	28	0.6	0.8						58~62	Normal grade
HP-700S	4.5	28	0.6	0.8			0.28	1		58~62	Good wear resistant & against medium impact
HP-700H	5.0	28	0.6	0.8			0.7			60~65	High hardness
HP-750T	5.5	21	0.5	0.7	3	1.2		3	1	60~65	Against high temperature
HP-750X	4.5	22	0.5	0.7	6.5					60~64	CNO type for higher impact
HP-700C	5.0	25	0.6	0.8			0.4			58~62	WA equivalent

HP WELDING

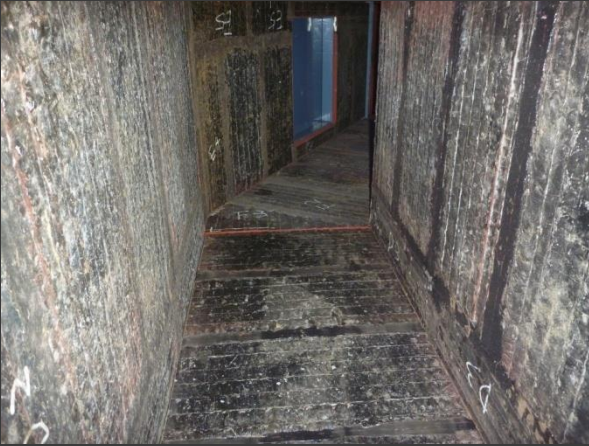
PRODUCTS

HOPPER LINER



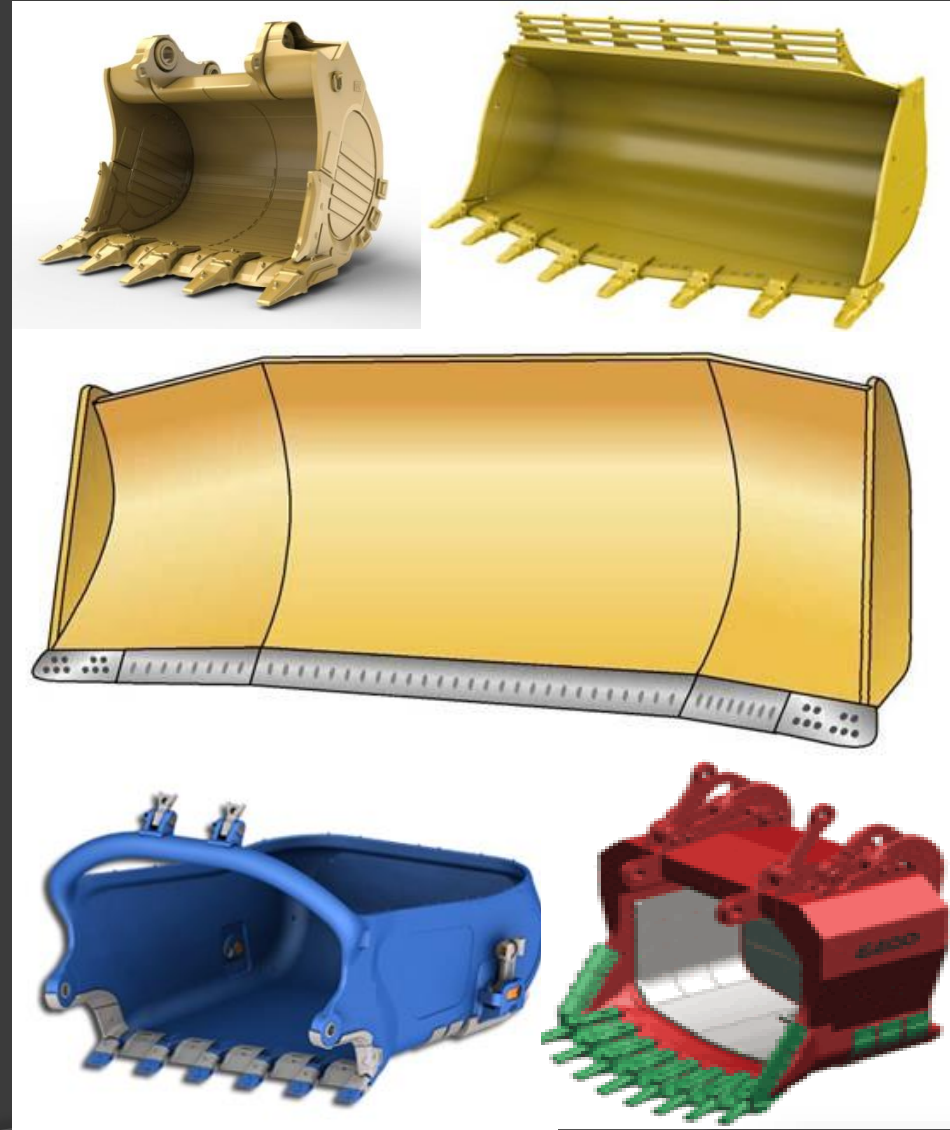
PRODUCTS

CHUTE



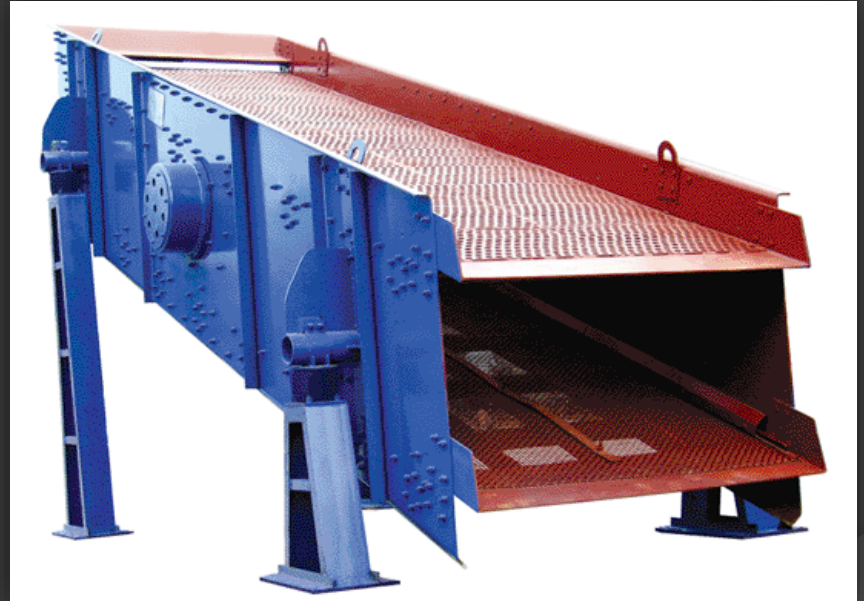
PRODUCTS

BUCKET LINER , CUTTER & BLADES



PRODUCTS

SCREEN



PRODUCTS

TRUCK DECK LINER



PRODUCTS

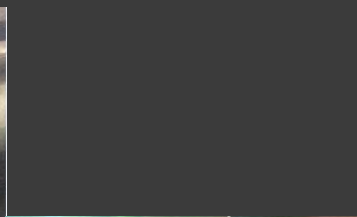
PIPE & VALVE



Overlay <10mm : $R \geq 150\text{mm}$ when overlay inward and $R \geq 300\text{mm}$ when overlay outward
Overlay $\geq 10\text{mm}$: $R \geq 350\text{mm}$ when overlay inward and $R \geq 700\text{mm}$ when overlay outward

PRODUCTS

Hardfacing Pipes



PRODUCTS Steel Mill Process



襯板



PRODUCTS

WELDING MACHINE



Welding



Cutting



Welding Gun



Control Box

TESTING & ANALYSIS FACILITIES



Hardness Test



Microstructure Inspection



Infrared-Ray Analysis



Abrasion Test



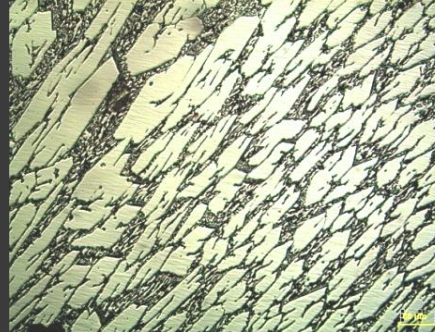
Spectrum Analysis

TESTING & ANALYSIS FACILITIES



Testing Lab

TESTING & ANALYSIS FACILITIES



Microstructure
Inspection

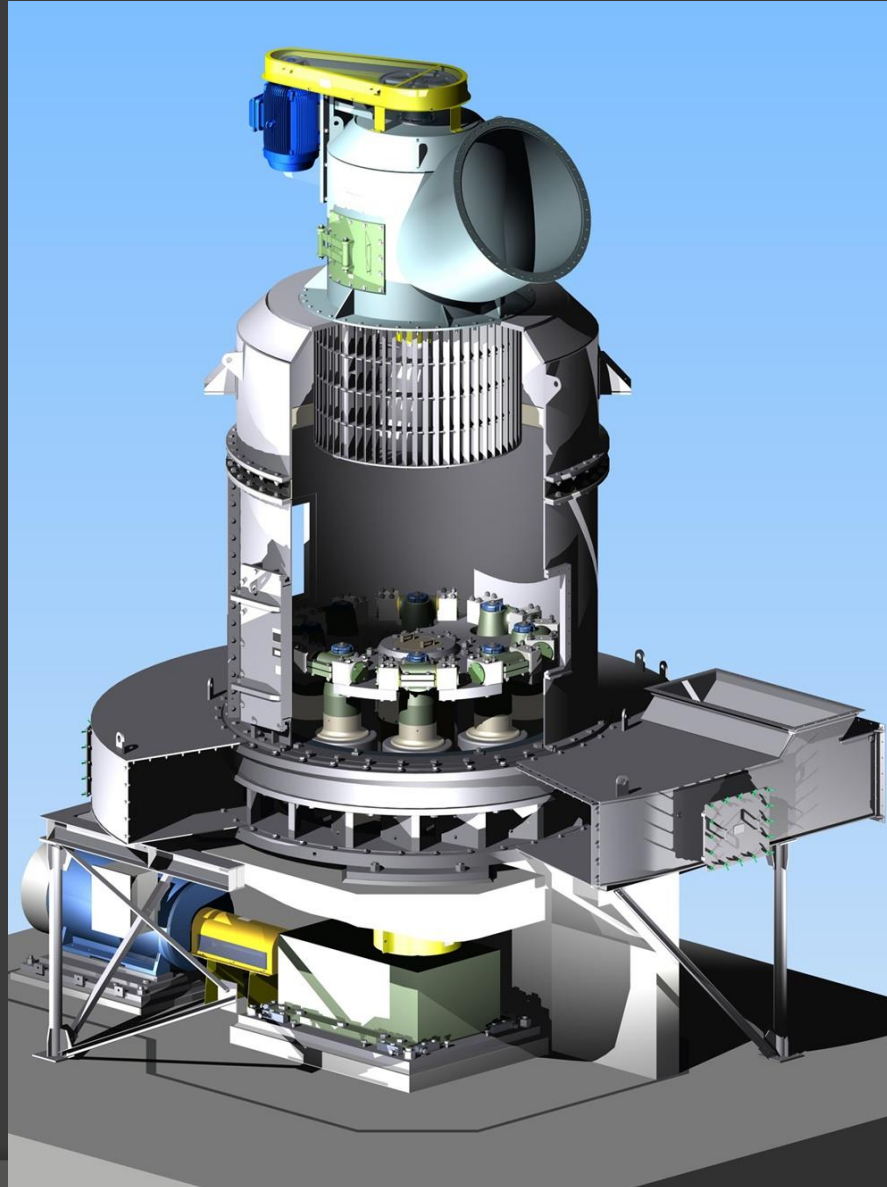
500X
4.5C-28Cr-1Mo

TESTING & ANALYSIS FACILITIES



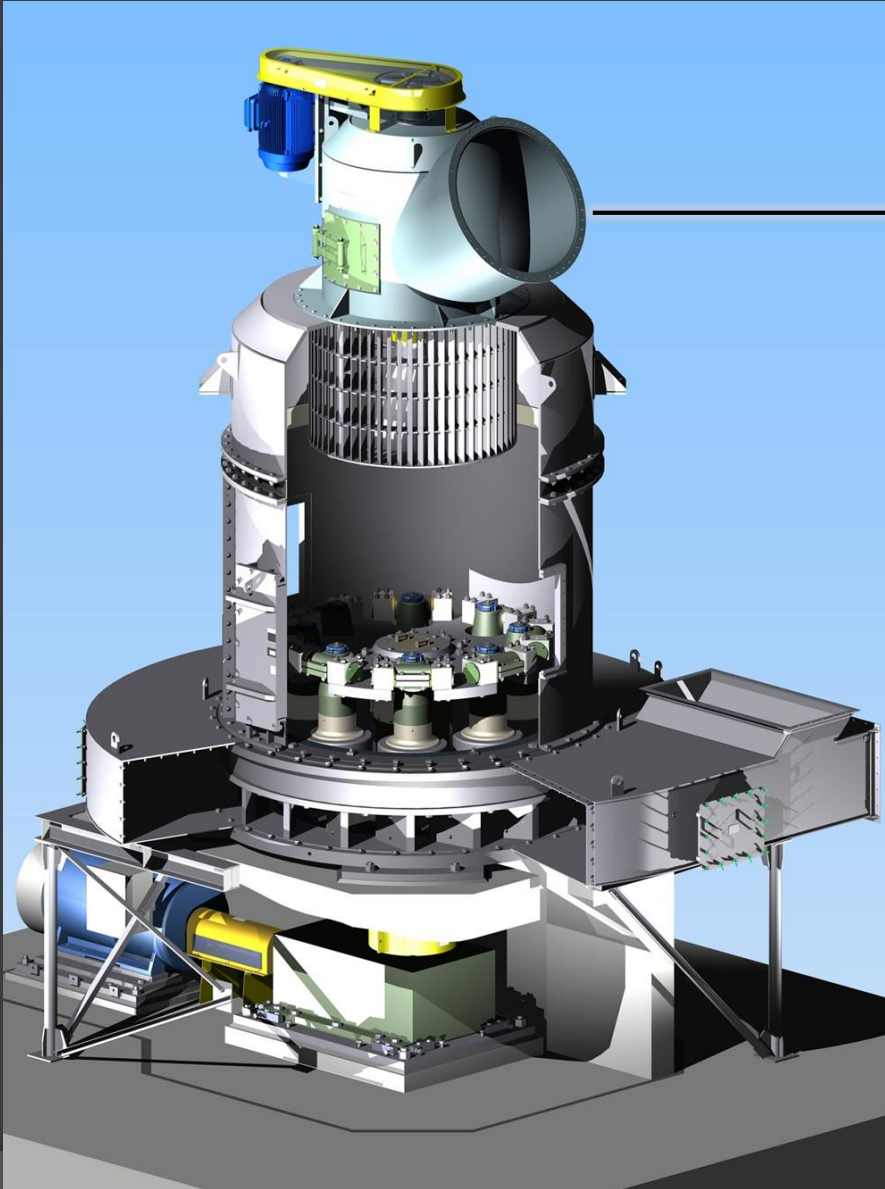
Impact Testing Facility

CCO PLATE FOR VERTICAL GRINDING MILL



PRODUCTS

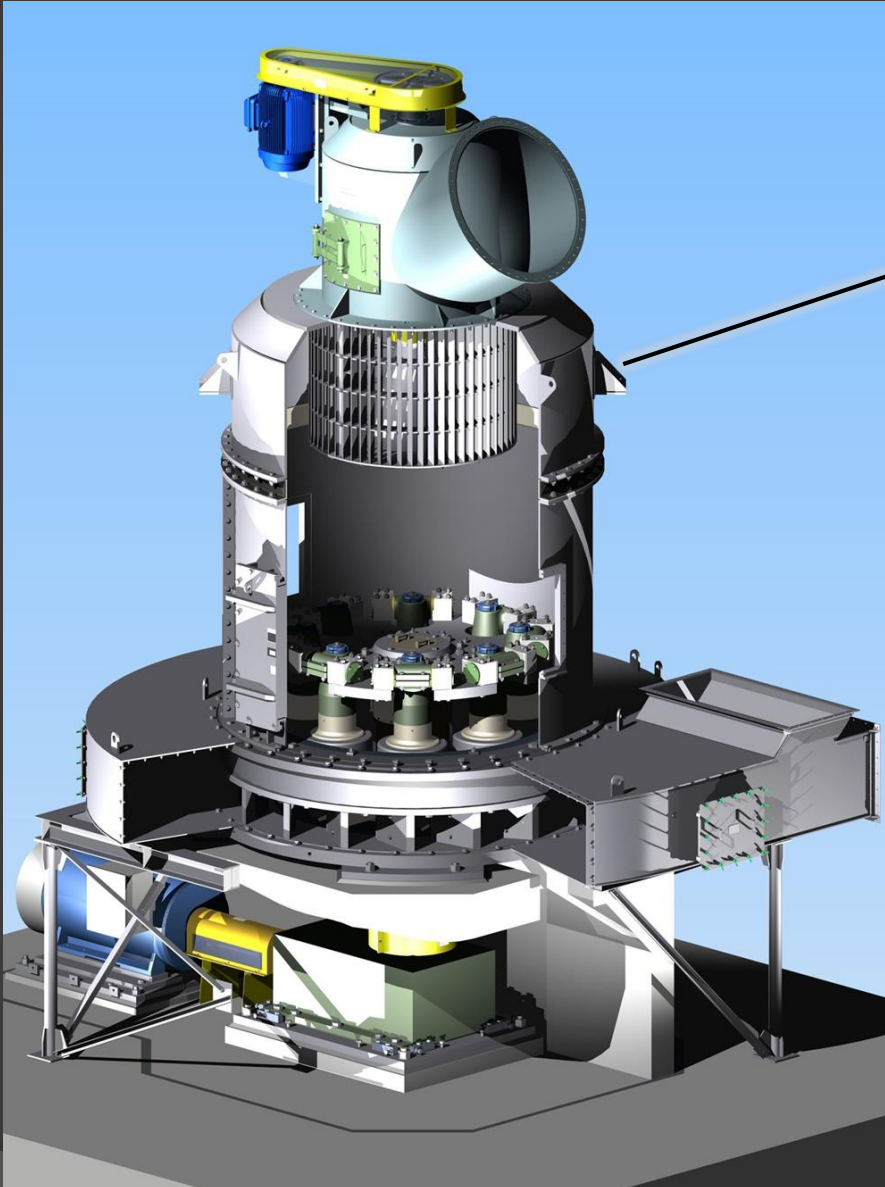
VERTICAL GRINDING MILL



Outlet Duct

PRODUCTS

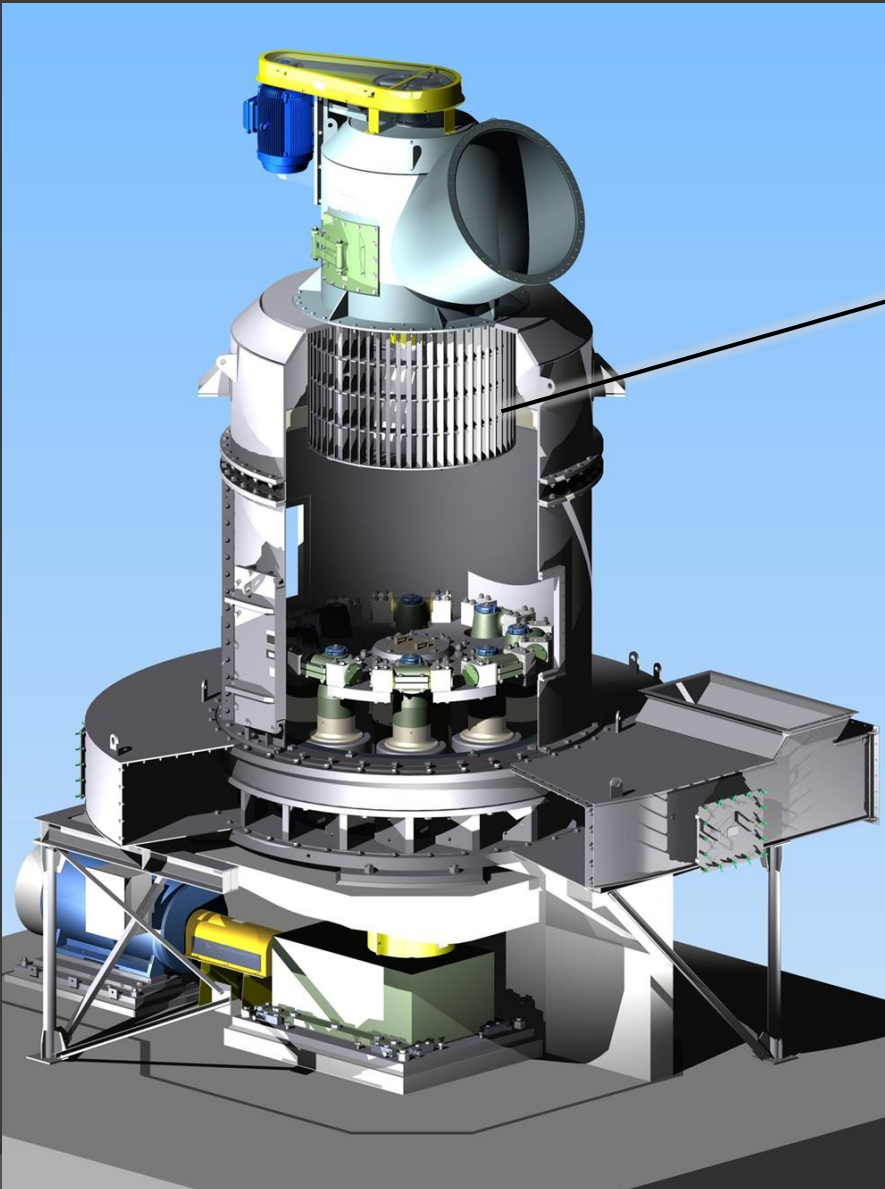
VERTICAL GRINDING MILL



Inlet Chute

PRODUCTS

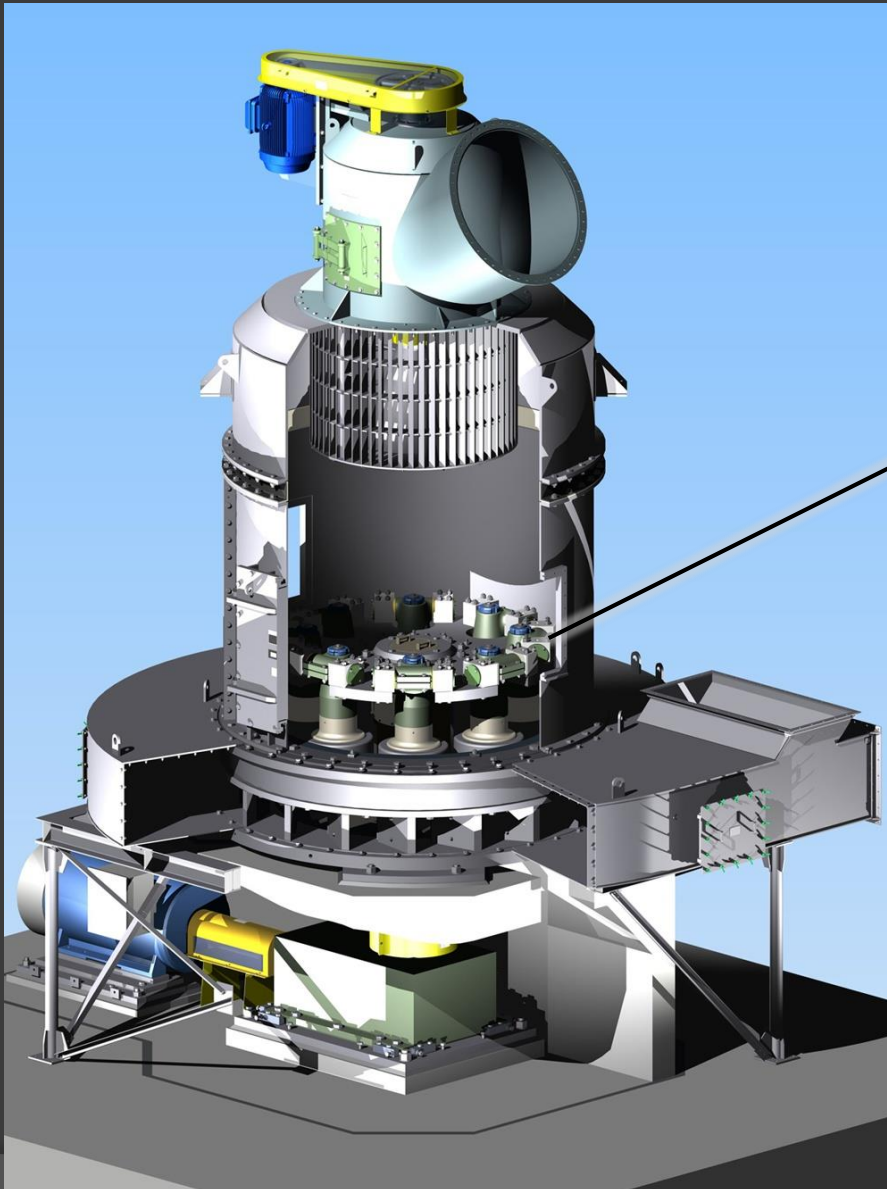
VERTICAL GRINDING MILL



Air Classifier
Vanes

PRODUCTS

VERTICAL GRINDING MILL

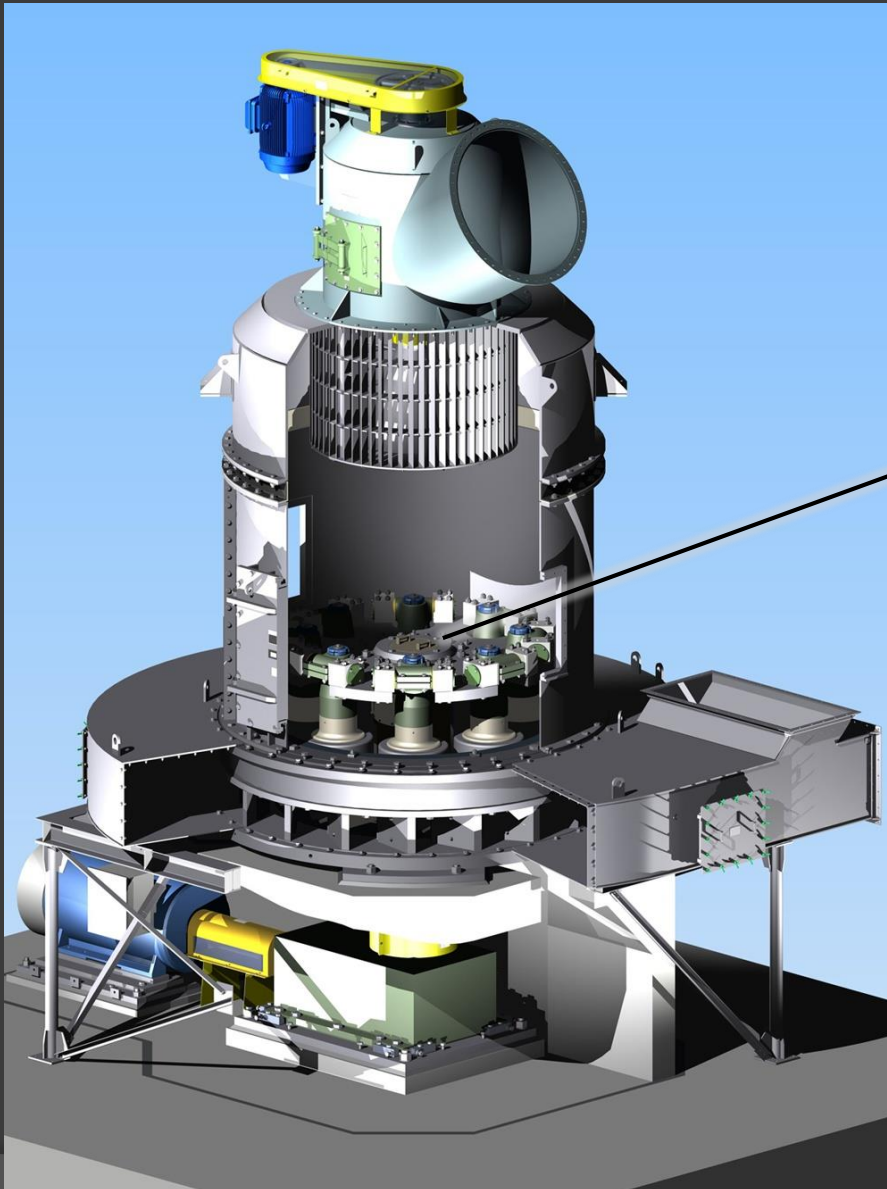


Grinding Roller



PRODUCTS

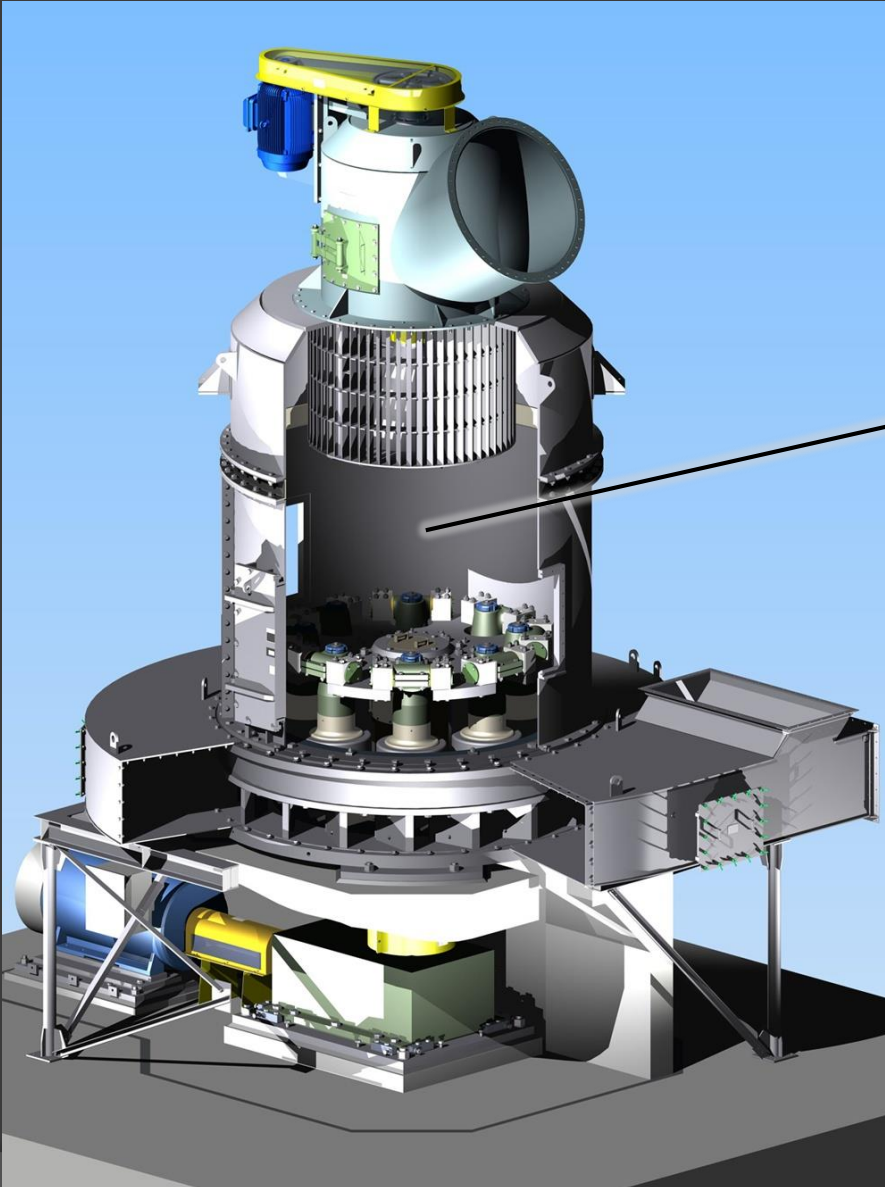
VERTICAL GRINDING MILL



Grinding
Table

PRODUCTS

VERTICAL GRINDING MILL



Reject Cone

PRODUCTS

GRINDING MILL ROLLERS

DM-F.L Smith

ATOX52.5
ATOX50
ATOX37.5
ATOX35
ATOX32.5

GM-Pfeiffers

MPS200K
MPS160
MPS5300B
MPS5000B
MPS4000B
MPS3750B
MPS3550B

CN-SZ MLS

MLS4531
MLS3626
MLS3424
MLS3150
MLS3123
MLS2619

GM-Polysius

RM57/28
RM51/26
RM43/21
RM3015/15

GM-Loeschel

LM56.2
LM46.2
LM28.2
LM23.21
LM21.20

JP-UBE

UM46.4
UM40.4
UM38.4
UM35.3
UM19.2
UM8.2

NE-ZGM

ZGM95N
ZGM80N
ZGM25

HF-HRM

HRM3400
HRM2800
HRM2200
HRM2000
HRM1900
HRM1700
HRM1300

CN-SZ MPF

MPF2217
MPF2117
MPF2116
MPF1814
MPF1713

TJ-TRM

TRM53.4
TRM50.4
TRM46.4
TRM38.4
TRM37.4

Conch-Kawasaki

CK450
CK490

OTHERS

TLM3031-02028
CLM2450
CLM2000
AVM22-3
M28

Let's Cooperate !

