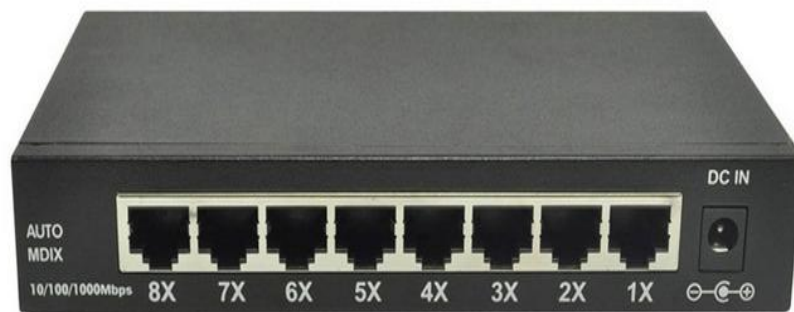


## GL-2108S

This is very easy to manage, all ports support MDI / MDIX auto-flip function, neither can be used as ordinary port, also used as Uplink port. It provides a simple, economical, high performance, seamless, standard networks moved to 100M solution in improving the performance of the Working Group provides a great flexibility, with the use of simple, flexible, easy installation, superior performance, cost-effective the characteristics of high speed is your ideal for improving service.



**8 port Gigabit switch**

### Key Features:

- >Comply with IEEE 802.3, IEEE 802.3u ,IEEE802.3ab standards
- >8 10/100/1000M adaptive RJ45 ports, supports port auto-flip (Auto MDI / MDIX)
- >Support IEEE802.3x flow control for Full-duplex Mode
- >8K entry MAC address table of BL-SG108/BL-SG108-2with auto-learning and auto-aging
- >Support for IEEE802.1p priority protocol mode, the secondary static port priority mode and ToS priority mode
- >External power adapter Supply
- >Dynamic LED indicator that provides a variety of working conditions and troubleshooting tips

**Product specifications:**

|                                   |   |
|-----------------------------------|---|
| General                           |   |
| Standards                         | IEEE 802.3, IEEE 802.3u ,IEEE802.3ab  |
| Topology                          | Star  |
| Protocol                          | CSMA/CD   |
| Data Transfer Rate                | Ethernet:10Mbps(Half Duplex),20Mbps(Full Duplex)  |
|                                   | Fast Ethernet:100Mbps(Half Duplex),200Mbps(Full Duplex)                                       |
|                                   | Gigabit Ethernet:2000Mbps(Full Duplex)  |
| Network Media(Cable)              | 10Base-T;UTP category 3,4,5 cable<br>(maximum 100m) EIA/TIA-568 100 Ω STP<br>(maximum 100m)   |
|                                   | 100Base-TX; UTP category 5,5e cable<br>(maximum 100m) EIA/TIA-568 100 Ω STP<br>(maximum 100m) |
|                                   | 1000Base-T;UTP category 5 cable<br>(maximum 100m) EIA/TIA-568 100 Ω STP<br>(maximum 100m)     |
| Number of Ports                   | 8 of the 10/100/1000Mbps Auto-Negotiation RJ45 ports  |
| LED indicators                    | Power,100/1000Mbps Link/Act   |
| Transfer Method                   | Store-and-Forward   |
| MAC Address Learning              | Automatically learning. automatically   |
| Frame Filler Rate                 | 10Base-T:14880pps/Port  |
|                                   | 100Base-T:148800pps/Port  |
|                                   | 1000Base-T:1488000pps/Port  |
| Frame Forward Rate                | 10Base-T:14880pps/Port  |
|                                   | 100Base-T:148800pps/Port  |
|                                   | 1000Base-T:1488000pps/Port  |
| <b>Environmental and Physical</b> |   |
| Operating Temperature             | -10~45℃ ( 14~113° F )   |
| Storage Temperature               | -15~50℃ ( 14~113° F )   |
| Operating Humidity                | 10%~90% non-condensing  |
| Storage Humidity                  | 5%~90% non-condensing   |