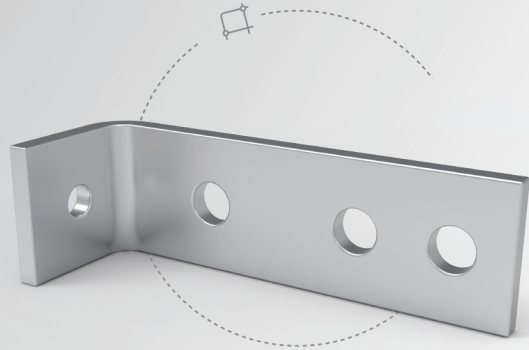


# PRODUCT PROFILE

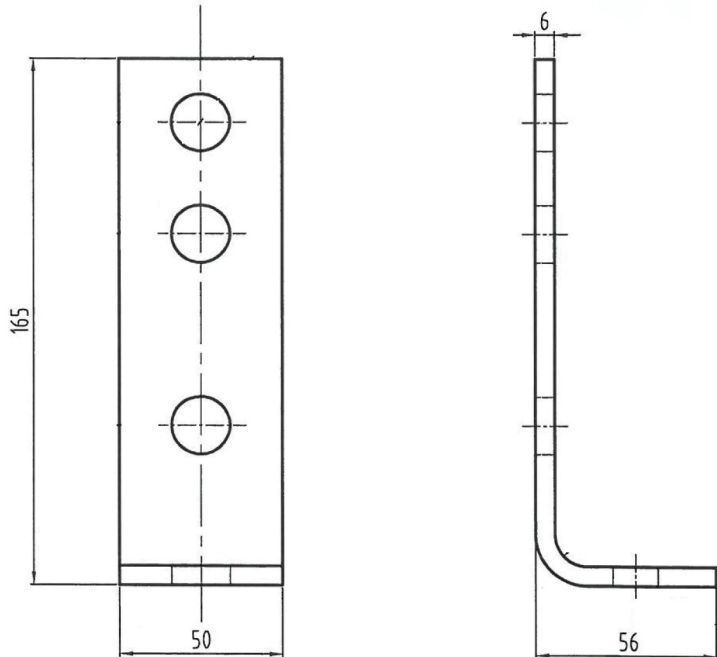


- Galv dist stabilizing bracket



## Application:

It can be attached to wall studs if they're being applied to plasterboard walls, or brickwork and masonry.



## Technical Parameters

|                     |  |
|---------------------|--|
| Description         | 165X50X6 Galv Dist stabilizing bracket |
| Part No.            | D.Q.Q.000029                           |
| Material Elongation | Q235                                   |
| Finish              | Galvanized                             |