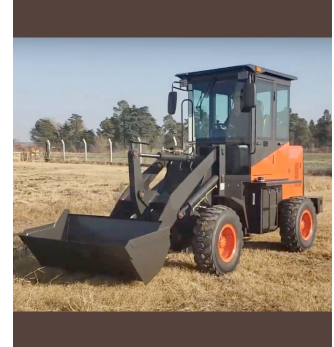




Taian zhengtai construction machinery Co., Ltd  
Industrial Park Shiheng town Feicheng City Shandong province China

whatsapp/ wechat: +86 13953879973  
EMAIL: woniuniu9527@163.com



Description	Specification
rated load(kg)	1000
Rated bucket capacity (m <sup>3</sup> )	0.5
operating weight (kg)	3200
Max.dump height (MM)	2710
Max.dump reach (MM)	840
Automatic leveling ability	Y
steering angle (°)	35
Min turning radius (MM)	4800
Wheel base (MM)	2050
Tread (MM)	1370
Min.ground clearance (MM)	230
Overall dimensions (l×w×h)mm (MM)	5000×1630×2520
travel speed (km/h)	
Forward gear I	0~6
II	0~18
reverse gear I	0~6
II	0~18
Engine Model	Xinchai490
Type	Water injection four-stroke inline
Rated power (kW)	32
Rated speed (rpm)	2200
The voltage(V)	12