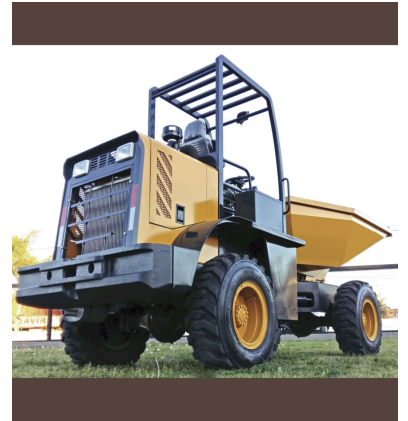




Taian zhengtai construction machinery Co., Ltd
 Industrial Park Shiheng town Feicheng City Shandong province China

whatsapp/ wechat: +86 13953879973
 EMAIL: woniuniu9527@163.com



Loading capacity:	1500KG
Articulation angle:	35°
Maximum loading height:	1600mm
Braking system:	disk
Distance between axis:	2480mm
Gauge width:	1460mm
Load lifting time:	3.5s
Hydraulic system pressure:	16mpa
Cruising Speed - Forward:	6-18km/h
Cruising Speed - Reverse:	6-18km/h
Maximum angle of rise:	30°
Engine - Model:	xinchai490
Engine - Power:	32kw/42hp
Engine - Maximum Torque:	156nm
Engine - Displacement:	2.67L
Electrical System - Voltage:	12v
Powershift	4wd
Rolled Type:	12-16.5
Operating weight:	3300kg
Bucket capacity (up to):	0.8cbm
Dimensions- Total length (with bucket):	4540mm
Dimensions - Width:	1720mm
Dimensions - Height:	2610mm
Dimensions - Maximum discharge height:	800mm
Minimum distance to the floor:	240mm