

## UONICORE STP CAT6A MODULAR KEYSTONE JACK

### Features



- FCC and IEC compliant
- Compact design
- shielded designs
- Conform to ANSI/TIA/EIA-568-B.2, ISO/IEC 11801 2nd edition (2002) and CENELEC EN50173 (2002) for Category 6A
- Universal block - 110 & Krone tool compatible
- Support solid or stranded 23-26 AWG wires
- Protective strain relief caps
- Strain relief for STP models
- Designed for high density applications
- Simple assembly and installation for reliable performance
- Compatible with a variety of international faceplates and patch panels, as per IEC 60603-7.

UONICORE Keystone jacks are one item of the cabling solutions system, featuring enhanced cat5e cat6 performance. The jack is designed to support protocols running at up to 10G+ Mbps, ATM 622 Mbps.



## UONICORE STP CAT6A MODULAR KEYSTONE JACK

### **Description**

Part of the UONICORE keystone modular jack Communications outlet family, Keystone Modular Jacks are cost-effective building blocks for your cabling system. The jacks can be used with both communications outlets and patch panels to maximize the flexibility of your inventory. Due to their small size, the keystones are particularly suitable for high density applications, such as 24 ports in 1U, and they fit almost every available faceplate.

Keystone Jacks conform to ANSI/TIA/EIA-568-B.2, ISO/IEC 11801 2<sup>nd</sup> edition (2002) and CENELEC EN50173 (2002) for Category6A /Class D requirements, and are designed for high-speed protocols such as ATM 622 Mbps and Gigabit-Ethernet 1000 Mbps.

The jacks support both solid and stranded wires. The jacks fit in standard IEC 60603-7 openings.



# UONICORE STP CAT6A Keystone Jack

## Specifications

### Electrical Specifications Category 6A

#### Standard

#### Performance Requirements

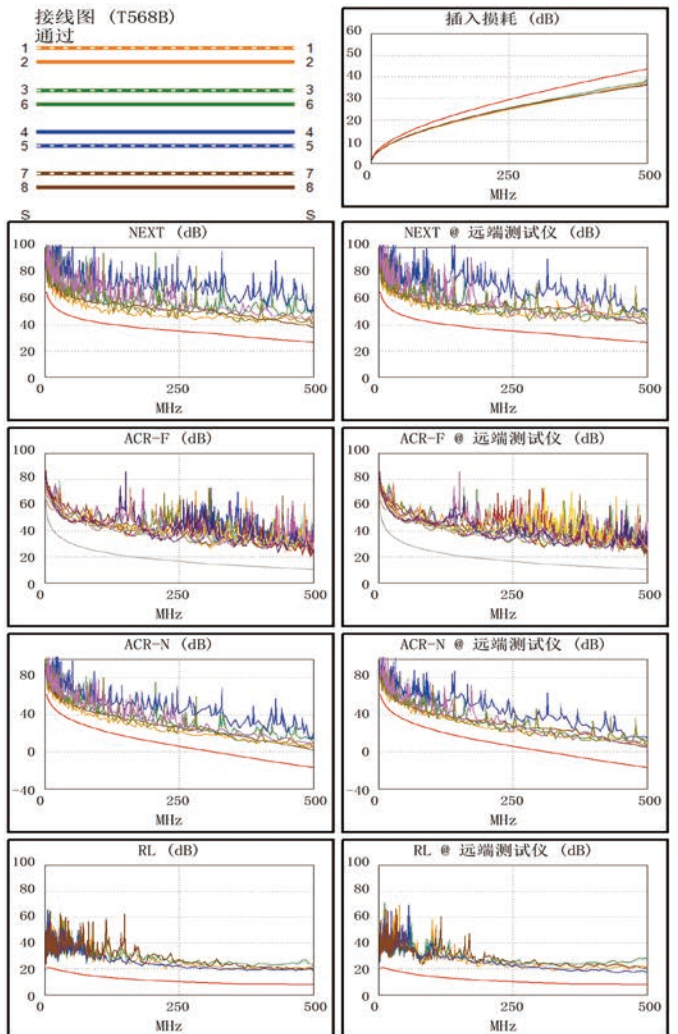
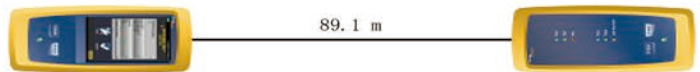
#### Measurement Procedure

ANSI/TIA/EIA-568-B.2  
Transmission Performance  
Specifications for 4-Pair  
STP Category 6A cabling

Meets all connecting  
hardware requirements

Annexes D, E, F and I

长度 (m), 极限值 90.0	[线对 1, 2]	89.1
传输时延 (ns), 极限值 498	[线对 4, 5]	438
时延偏离 (ns), 极限值 44	[线对 4, 5]	25
电阻值 (欧姆)	[线对 4, 5]	12.88
插入损耗 余量 (dB)	[线对 3, 6]	5.0
频率 (MHz)	[线对 3, 6]	498.0
极限值 (dB)	[线对 3, 6]	43.6



	最差余量		最差值	
通过	主机	SR	主机	SR
最差线对	1, 2-3, 6	3, 6-7, 8	3, 6-4, 5	4, 5-7, 8
NEXT (dB)	7.6	8.7	11.5	13.3
频率 (MHz)	166.0	280.0	498.0	500.0
极限值 (dB)	38.3	34.5	26.7	26.7
最差线对	3, 6	3, 6	3, 6	4, 5
PS NEXT (dB)	8.9	9.7	12.3	13.1
频率 (MHz)	197.0	225.5	498.0	500.0
极限值 (dB)	34.4	33.5	23.8	23.8
通过	主机	SR	主机	SR
最差线对	4, 5-3, 6	7, 8-4, 5	4, 5-3, 6	3, 6-4, 5
ACR-F (dB)	10.4	11.6	10.4	11.9
频率 (MHz)	494.0	4.1	494.0	494.0
极限值 (dB)	10.3	51.9	10.3	10.3
最差线对	3, 6	4, 5	3, 6	4, 5
PS ACR-F (dB)	11.8	13.0	11.9	13.7
频率 (MHz)	451.0	1.0	494.0	494.0
极限值 (dB)	8.1	61.2	7.3	7.3
不适用	主机	SR	主机	SR
最差线对	1, 2-3, 6	1, 2-3, 6	3, 6-4, 5	4, 5-7, 8
ACR-N (dB)	10.2	10.5	18.8	20.8
频率 (MHz)	105.0	20.1	498.0	500.0
极限值 (dB)	23.1	45.2	-16.9	-17.1
最差线对	3, 6	3, 6	3, 6	3, 6
PS ACR-N (dB)	11.0	10.9	17.3	19.0
频率 (MHz)	6.9	6.9	498.0	498.0
极限值 (dB)	53.5	53.5	-19.8	-19.8
通过	主机	SR	主机	SR
最差线对	3, 6	1, 2	4, 5	4, 5
RL (dB)	9.2	8.5	10.3	9.0
频率 (MHz)	25.0	82.0	381.0	472.0
极限值 (dB)	19.0	14.9	8.2	8.0

满足的标准:  
 10BASE-T                    100BASE-TX                    100BASE-T4  
 1000BASE-T                2.5GBASE-T                    5GBASE-T  
 10GBASE-T                ATM-25                         ATM-51  
 ATM-155                    100VG-AnyLan                TR-4  
 TR-16 Active                TR-16 Passive