

Technical Parameters

Maximum measurement distance	40m
Measurement accuracy	±2mm*
Laser type	2.688
Time to cut the laser automatically	15s
Time to shutdown Automatically	45s
Battery life	8000times (single measurement)
Battery Type	ZnAA
Working temperature	0°C~40°C/32~104°F
Storage temperature	-20°C~60°C/-4~104°F

*Typical Reference: Zinnalben reflectivity 100%/white surface, environment light <2000 Lux, 25°C. Distance is usually affected by the distance, reflectivity and environment light, each probably gets distance around ±27mm (±2.7mm).

Technical Parameters

Maximum measurement distance	40m
Measurement accuracy	±2mm*
Laser type	2.688
Time to cut the laser automatically	15s
Time to shutdown Automatically	45s
Battery life	8000times (single measurement)
Battery Type	ZnAA
Working temperature	0°C~40°C/32~104°F
Storage temperature	-20°C~60°C/-4~104°F

*Typical Reference: Zinnalben reflectivity 100%/white surface, environment light <2000 Lux, 25°C. Distance is usually affected by the distance, reflectivity and environment light, each probably gets distance around ±27mm (±2.7mm).

Safety regulations

Please read all of the operational guide and safety regulations without complying with the manual guide could cause bodily injury to the instrument on measurement result.

The instrument is not allowed to disassemble or repair or performance change for laser emitter. Please keep it out of reach of children and avoid using by any irrelevant person.

It is strictly prohibited to shoot eyes or other parts of body with the laser. It is not allowed to take the laser to shoot any equipment and devices, please open the meter in the explosive environment.

Just the battery of remote device shall not processed and disposed. Please open the meter in the explosive environment.

Just the battery of remote device shall not processed and disposed. Please open the meter in the explosive environment.

Contractual solutions for you.

Professional casts quality and good quality gets reputation

▲ to the zero of the instrument the range of adjustment ±0-9mm. After adjustment, press to save the calibration data. Non-press ▲ to adjust the value that you need.

Function

1. Self-locking function
When pull out the tape it will lock automatically. Press the self-locking button and the tape will be retractable. Hold it out for too fast.

The Measurement with Hook
Buckle the body measurement to measure and adjust the bottom of the hook to 0.

Units of measurement

Number	Length unit
1	0.000m
2	0.00m
3	0.0m
4	0.1/16in
5	0.00"/1/16
6	0.00"

5. Shutdown function
Long press button, device off.

6. Self-calibration function
The self-calibration function is provided to ensure the accuracy of the instrument.
Calibration method: In the off state, continue to hold down key boot, loose key until the screen appears "boot", into automatic calibration mode.

During such mode, the user can adjust the value according

Display Screen

1. Soft Locking button
2. Addition/subtraction/unit conversion
3. Volume switching
4. S/PRT/measure key
5. S/PRT/measure key
6. Reference Switch

Billion

- The indicator of battery
- Measurement standards
- The indicator of unit
- The hand Display Screen

Technical Parameters

Maximum measurement distance	40m
Measurement accuracy	±2mm*
Laser type	2.688
Time to cut the laser automatically	15s
Time to shutdown Automatically	45s
Battery life	8000times (single measurement)
Battery Type	ZnAA
Working temperature	0°C~40°C/32~104°F
Storage temperature	-20°C~60°C/-4~104°F

*Typical Reference: Zinnalben reflectivity 100%/white surface, environment light <2000 Lux, 25°C. Distance is usually affected by the distance, reflectivity and environment light, each probably gets distance around ±27mm (±2.7mm).

Units of measurement

Number	Length unit
1	0.000m
2	0.00m
3	0.0m
4	0.1/16in
5	0.00"/1/16
6	0.00"

5. Shutdown function
Long press button, device off.

6. Self-calibration function
The self-calibration function is provided to ensure the accuracy of the instrument.
Calibration method: In the off state, continue to hold down key boot, loose key until the screen appears "boot", into automatic calibration mode.

During such mode, the user can adjust the value according

Safety regulations

Please read all of the operational guide and safety regulations without complying with the manual guide could cause bodily injury to the instrument on measurement result.

The instrument is not allowed to disassemble or repair or performance change for laser emitter. Please keep it out of reach of children and avoid using by any irrelevant person.

It is strictly prohibited to shoot eyes or other parts of body with the laser. It is not allowed to take the laser to shoot any equipment and devices, please open the meter in the explosive environment.

Just the battery of remote device shall not processed and disposed. Please open the meter in the explosive environment.

Contractual solutions for you.

Professional casts quality and good quality gets reputation

▲ to the zero of the instrument the range of adjustment ±0-9mm. After adjustment, press to save the calibration data. Non-press ▲ to adjust the value that you need.

Function

1. Self-locking function
When pull out the tape it will lock automatically. Press the self-locking button and the tape will be retractable. Hold it out for too fast.

The Measurement with Hook
Buckle the body measurement to measure and adjust the bottom of the hook to 0.

Units of measurement

Number	Length unit
1	0.000m
2	0.00m
3	0.0m
4	0.1/16in
5	0.00"/1/16
6	0.00"

5. Shutdown function
Long press button, device off.

6. Self-calibration function
The self-calibration function is provided to ensure the accuracy of the instrument.
Calibration method: In the off state, continue to hold down key boot, loose key until the screen appears "boot", into automatic calibration mode.

During such mode, the user can adjust the value according

Display Screen

1. Soft Locking button
2. Addition/subtraction/unit conversion
3. Volume switching
4. S/PRT/measure key
5. S/PRT/measure key
6. Reference Switch

Billion

- The indicator of battery
- Measurement standards
- The indicator of unit
- The hand Display Screen

Technical Parameters

Maximum measurement distance	40m
Measurement accuracy	±2mm*
Laser type	2.688
Time to cut the laser automatically	15s
Time to shutdown Automatically	45s
Battery life	8000times (single measurement)
Battery Type	ZnAA
Working temperature	0°C~40°C/32~104°F
Storage temperature	-20°C~60°C/-4~104°F

*Typical Reference: Zinnalben reflectivity 100%/white surface, environment light <2000 Lux, 25°C. Distance is usually affected by the distance, reflectivity and environment light, each probably gets distance around ±27mm (±2.7mm).

Units of measurement

Number	Length unit
1	0.000m
2	0.00m
3	0.0m
4	0.1/16in
5	0.00"/1/16
6	0.00"

5. Shutdown function
Long press button, device off.

6. Self-calibration function
The self-calibration function is provided to ensure the accuracy of the instrument.
Calibration method: In the off state, continue to hold down key boot, loose key until the screen appears "boot", into automatic calibration mode.

During such mode, the user can adjust the value according

Display Screen

1. Soft Locking button
2. Addition/subtraction/unit conversion
3. Volume switching
4. S/PRT/measure key
5. S/PRT/measure key
6. Reference Switch

Billion

- The indicator of battery
- Measurement standards
- The indicator of unit
- The hand Display Screen

▲ to the zero of the instrument the range of adjustment ±0-9mm. After adjustment, press to save the calibration data. Non-press ▲ to adjust the value that you need.

Function

1. Self-locking function
When pull out the tape it will lock automatically. Press the self-locking button and the tape will be retractable. Hold it out for too fast.

The Measurement with Hook
Buckle the body measurement to measure and adjust the bottom of the hook to 0.

Units of measurement

Number	Length unit
1	0.000m
2	0.00m
3	0.0m
4	0.1/16in
5	0.00"/1/16
6	0.00"

5. Shutdown function
Long press button, device off.

6. Self-calibration function
The self-calibration function is provided to ensure the accuracy of the instrument.
Calibration method: In the off state, continue to hold down key boot, loose key until the screen appears "boot", into automatic calibration mode.

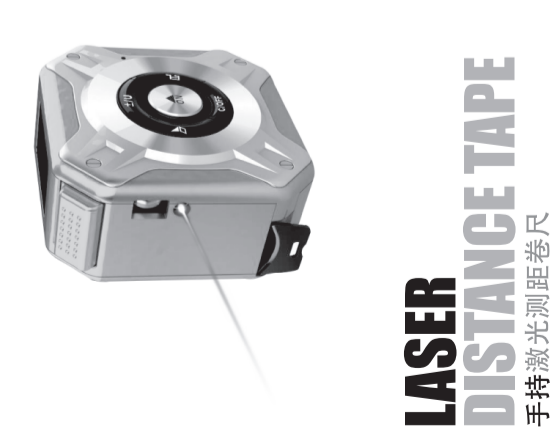
During such mode, the user can adjust the value according

Display Screen

1. Soft Locking button
2. Addition/subtraction/unit conversion
3. Volume switching
4. S/PRT/measure key
5. S/PRT/measure key
6. Reference Switch

Billion

- The indicator of battery
- Measurement standards
- The indicator of unit
- The hand Display Screen



用户手册

产品说明

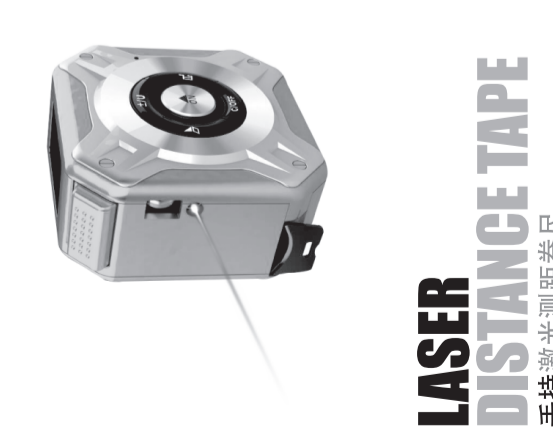
- 显示屏
- 测量数据
- 单位切换
- 激光/红外线
- 开机/关机键
- 关机脚踏
- 加减/单位切换
- 体积切换
- 自锁按钮

基本操作

- 启动仪器和关闭仪器
在关机状态下，按▲键，激光和红外线同时启动，仪器进入待机模式。
- 基本测量
a 单次测量
在待机模式下，按▲键启动激光，锁定测量点。
看按▲键进行单次距离测量，测量结果显示在主显示屏区。
- 连续测量
在待机模式下，长按▲键，进入连续测量状态。主要显示区实时显示当前测量值，短按▲键退出连续测量。
- 测量基准设置
短按▲键进行设计前测量基准和末端基准的相互切换，系统默认均未测量。
- 单位设定
长按▲键进行设计前测量基准和末端基准的相互切换，系统默认均未测量。
- 测量基准设置
短按▲键进行设计前测量基准和末端基准的相互切换，系统默认均未测量。
- 关机脚踏
在待机状态下，按▲键，激光和红外线同时启动，仪器进入待机模式。

技术参数

项目	40m
最大测量距离	±2mm
距离测量精度	有
精度自动校准	有
连续测量功能	有
测量单位选择	有
声音提示	有
激光类型	286590nm < 1mW
自动切断激光	15秒
自动关机	45秒
最大电池寿命	8000次 (单次测量)
工作温度范围	0°C~40°C/32~104°F
存储温度	-20°C~60°C/-4~104°F
外形尺寸	73*73*40



用户手册

产品说明

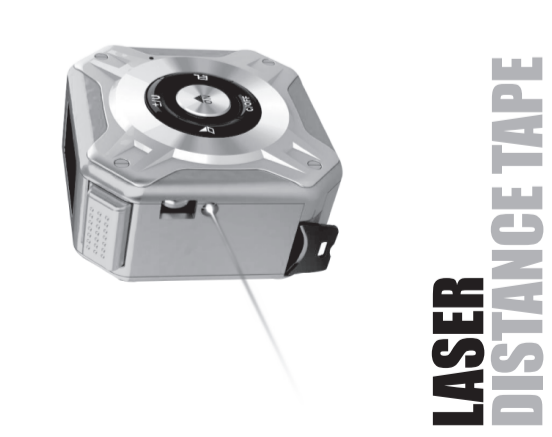
- 显示屏
- 测量数据
- 单位切换
- 激光/红外线
- 开机/关机键
- 关机脚踏
- 加减/单位切换
- 体积切换
- 自锁按钮

基本操作

- 启动仪器和关闭仪器
在关机状态下，按▲键，激光和红外线同时启动，仪器进入待机模式。
- 基本测量
a 单次测量
在待机模式下，按▲键启动激光，锁定测量点。
看按▲键进行单次距离测量，测量结果显示在主显示屏区。
- 连续测量
在待机模式下，长按▲键，进入连续测量状态。主要显示区实时显示当前测量值，短按▲键退出连续测量。
- 测量基准设置
短按▲键进行设计前测量基准和末端基准的相互切换，系统默认均未测量。
- 单位设定
长按▲键进行设计前测量基准和末端基准的相互切换，系统默认均未测量。
- 测量基准设置
短按▲键进行设计前测量基准和末端基准的相互切换，系统默认均未测量。
- 关机脚踏
在待机状态下，按▲键，激光和红外线同时启动，仪器进入待机模式。

技术参数

项目	40m
最大测量距离	±2mm
距离测量精度	有
精度自动校准	有
连续测量功能	有
测量单位选择	有
声音提示	有
激光类型	286590nm < 1mW
自动切断激光	15秒
自动关机	45秒
最大电池寿命	8000次 (单次测量)
工作温度范围	0°C~40°C/32~104°F
存储温度	-20°C~60°C/-4~104°F
外形尺寸	73*73*40



用户手册

产品说明

- 显示屏
- 测量数据
- 单位切换
- 激光/红外线
- 开机/关机键
- 关机脚踏
- 加减/单位切换
- 体积切换
- 自锁按钮

基本操作

- 启动仪器和关闭仪器
在关机状态下，按▲键，激光和红外线同时启动，仪器进入待机模式。
- 基本测量
a 单次测量
在待机模式下，按▲键启动激光，锁定测量点。
看按▲键进行单次距离测量，测量结果显示在主显示屏区。
- 连续测量
在待机模式下，长按▲键，进入连续测量状态。主要显示区实时显示当前测量值，短按▲键退出连续测量。
- 测量基准设置
短按▲键进行设计前测量基准和末端基准的相互切换，系统默认均未测量。
- 单位设定
长按▲键进行设计前测量基准和末端基准的相互切换，系统默认均未测量。
- 测量基准设置
短按▲键进行设计前测量基准和末端基准的相互切换，系统默认均未测量。
- 关机脚踏
在待机状态下，按▲键，激光和红外线同时启动，仪器进入待机模式。

技术参数

项目	40m
最大测量距离	±2mm
距离测量精度	有
精度自动校准	有
连续测量功能	有
测量单位选择	有
声音提示	有
激光类型	286590nm < 1mW
自动切断激光	15秒
自动关机	45秒
最大电池寿命	8000次 (单次测量)
工作温度范围	0°C~40°C/32~104°F
存储温度	-20°C~60°C/-4~104°F
外形尺寸	73*73*40