

EXCAVATOR



ShanDing Group is a professional construction machinery manufacturer integrating production and sales



SHANDONG SHANDING MACHINERY CO.,LTD

电子邮箱(E-mail): may@dingyuanwj.com

官方网站 (official website) : www.shandingglobal.com

地 址: 山东国际商贸港·西城经济产业园

Add: Yucheng Xicheng Industrial Park, Shandong Province.



ZHANTU MALL

About Us >

The mission of company

create an extremely cost-effective machinery and equipment brand and liberate more labor for the world
create an extremely cost-effective machinery and equipment brand and liberate more labor for the world.

corporate vision

to create and operate 7 international companies in different countries.

Company values

customer first, honesty and trustworthiness, teamwork, extremely slow like hatred, love and dedication.

management idea

market-oriented, customer-centric, innovation-centric, and leading-driven



Contents

❖	SD12D mini excavator introduction	4-11	❖	SD40B mini excavator introduction	96-103.
❖	SD13D mini excavator introduction	12-21	❖	SD40U mini excavator introduction	104-111.
❖	SD17-9 mini excavator introduction	22-29	❖	SD40W-9T mini excavator introduction	112-118.
❖	SD17B mini excavator introduction	30-37	❖	SD65E mini excavator introduction	119-126.
❖	SD18U mini excavator introduction	38-45	❖	SD75W-9T mini excavator introduction	127-134.
❖	SD20U mini excavator introduction	46-53	❖	SD80W-9T mini excavator introduction	135-142.
❖	SD25B mini excavator introduction	54-61.	❖	SD90W-9T mini excavator introduction	143-150.
❖	SD25U mini excavator introduction	62-69.	❖	SD90E mini excavator introduction	151-158.
❖	SD30-9B mini excavator introduction	70-77.	❖	SD135W mini excavator introduction	159-166.
❖	SD30U mini excavator introduction	78-87.	❖	SD160W-9T mini excavator introduction	167-175
❖	SD35U mini excavator introduction	88-95.	❖	SD235LC mini excavator introduction	176-183



SD12D

mini excavator

Product Overview



**1 TON
MINI EXCAVATOR**

EXCAVATOR SD12D

The SD12D mini excavator is the earliest product developed by Shanding. This small excavator is the one with the most stable performance and the strongest digging power among the 1-ton small excavators;

Suitable for small projects in your own garden nursery.

Product Overview



This SD12D mini excavator weighs about 10 0 0 kg ➤

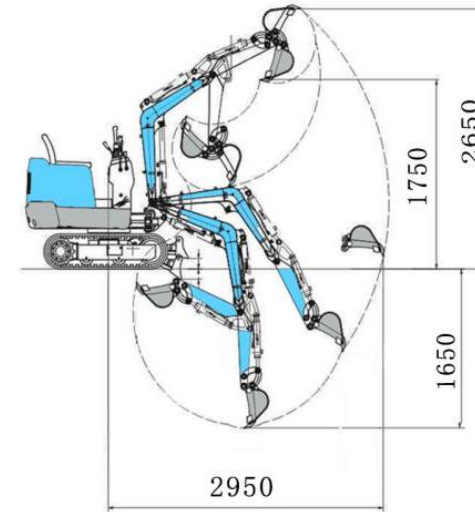
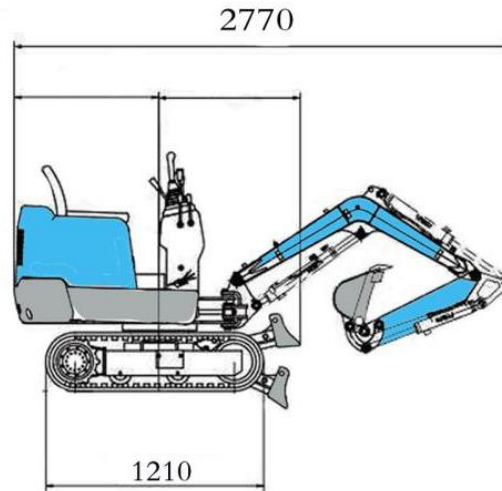
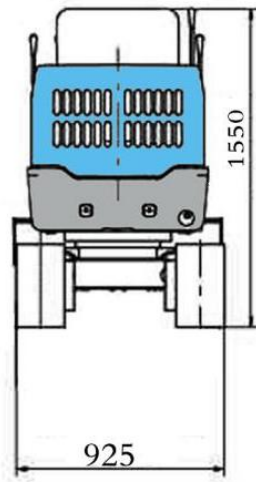
relatively small and flexible ➤

Using the Koop 192F, Engine power 8.6 KW ➤

bucket capacity 0.025 m ➤



Technical Specifications



1. Overall Width: 925mm
2. Overall Length: 2770mm
3. Max. Digging Height: 2650mm
4. Max Digging Depth: 1650mm
5. Boom Length: 1490mm
6. Track Length: 1210mm
7. Max Dumping Height: 1750mm
8. Max. Digging Radius: 2950mm

Details Display



Reinforced arm design

Improve structure, disperse stress, improve stability and durability of structure



Add cylinder guard plate and bottom protection device , pipeline hidden type design.
Prevent scratches and damage in all parts.



Add hydraulic oil radiator and respirator , powerful cooling fan , etc
Reli eve the high temperature phenomenon and works continuously



Enhanced car frame (chassis and platform)
Large shelf wider and thicker , several centimeters thicker than the old model , the whole vehicle is stable and powerful



New design

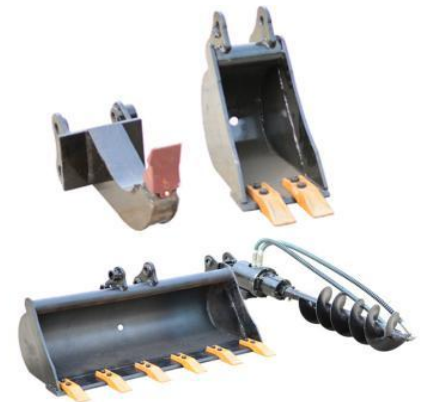
Die cover stamping, beautiful upper grade

Reinforced rubber track durable

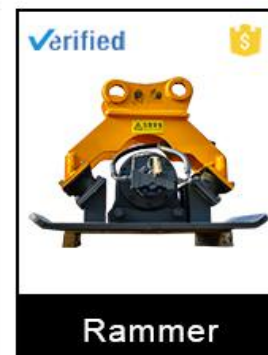
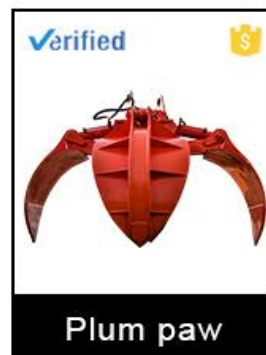
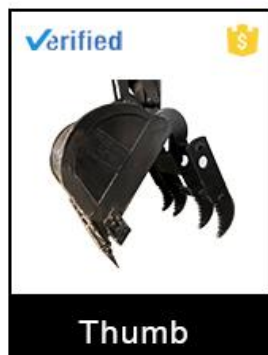
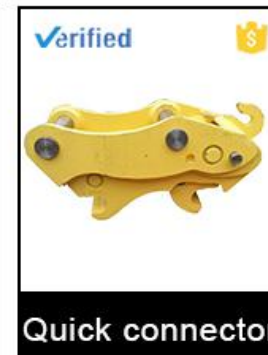
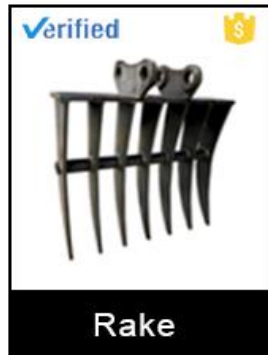
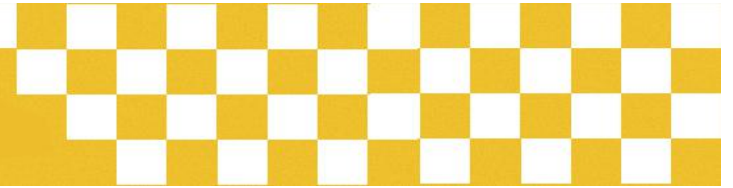


Handle and control list, easy to learn

Can be matched with a variety of front-end furniture, suitable for a variety of different working conditions.



Accessories supply



Technical Specifications



Machine parameters		Machine configure	
Model	SD12D	Engine Model	KOOP 192F
Operating Weight	1000Kg	Main valve	TIANJI
Bucket Capacity	0.028m³	Main Pump	Shimadzu
Rated Power	8.6 kw	Rotation Motor	SANYO
Max.Hydraulic System Pressure	16mpa	Walking Motor	SANYO
Max. Grade ability	30°	Dimensions	
Max. Ground Pressure	18.9N/m²	Overall Length	2770mm
Max Walking Speed	2.1Km/h	Overall Width	925mm
Max. Traction	9.2KN	Overall Height	1550mm/2100(Chair/Roof)
Platform Rotary Speed	9-11r/min	Arm Length	800mm
Working range		Boom Length	1490mm
Max. Digging Height	2650mm	Track Length	1210mm
Max Digging Depth	1650mm	Track Width	180mm
Max. Digging Radius	2950mm	Ground Clearance	240mm
Max Dumping Height	1750mm	Platform Width	920mm
Min. Radius of Gyration	1150mm	Platform Ground Clearance	420mm
Radius of Tail Gyration	680mm	Bucket Width	370mm
Max. Sinking Depth of Bulldozer	230mm	As the technology is constantly updated, the technical specifications are subject to change without prior notice	
Max. Lifting Depth of Bulldozer	210mm		



SD13D

mini excavator

Product Overview



**1 TON
MINI EXCAVATOR**

EXCAVATOR SD13D

This product is widely used in the construction of small spaces such as vegetable greenhouses, orchard nurseries, farmland leveling, and digging ditches. It is the preferred tool to replace labor.

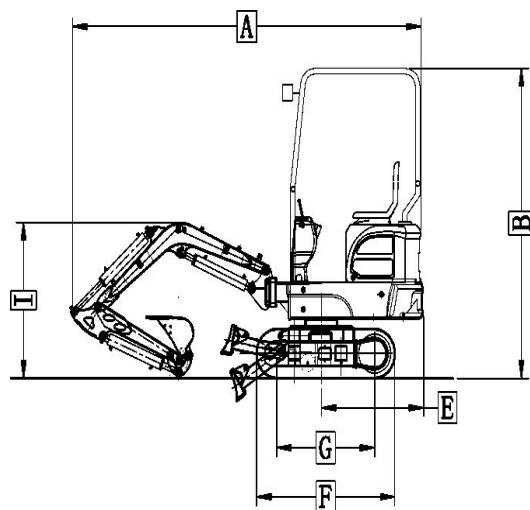
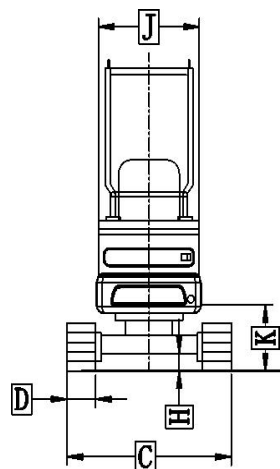
Product Overview



- This SD13D small excavator weighs about 1013/1035kg
- relatively small and flexible
- Koop, 192F/ Kubota, D722-EF11 ,Engine power 7.6kw,10.2 kw KW
- bucket capacity 0.025 m

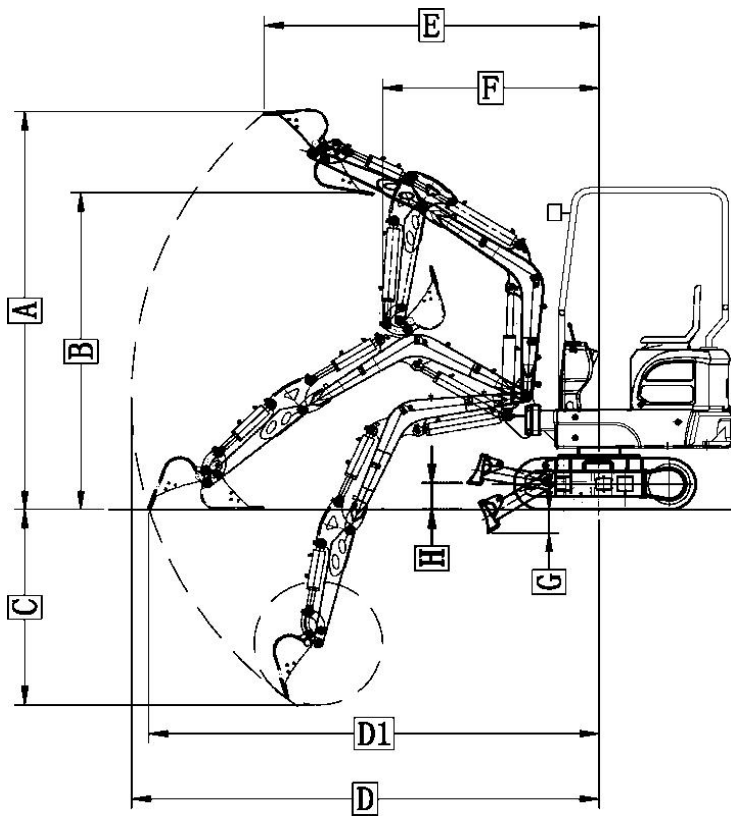


Technical Specifications



SD13D hydraulic excavator size parameters

Codename	Code item	Code size
A	Total length	2780mm
B	Total height	2150mm
C	Overall width	930mm
D	Track width	180mm
E	Platform turning radius	883mm
F	Track length	1195mm
G	Wheelbase	845mm
H	Ground clearance	150mm
I	Total boom height	1107mm
J	Platform width	800mm
K	Platform height from the ground	430mm



SD13D hydraulic excavator operating range

Codename	Code item	Code size
A	Maximum digging height	2637mm, (2930mm)
B	Maximum unloading height	2170mm
C	Maximum vertical digging depth	1336mm, (1552mm)
D	Maximum digging radius	3072mm
DI	Maximum ground level digging distance	3300mm
E	Digging radius of maximum digging height	2200mm
F	Minimum radius of gyration	1425mm
G	The maximum depth of the bulldozing board from the ground	170mm
H	The maximum height of the bulldozing board from the ground	185mm

Details Display



Reinforced arm design

Improve structure, disperse stress, improve stability and durability of structure



Add cylinder guard plate and bottom protection device , pipeline hidden type design. Prevent scratches and damage in all parts.

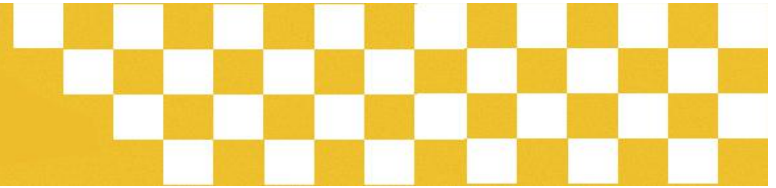


Add hydraulic oil radiator and respirator , powerful cooling fan , etc
Relieve the high temperature phenomenon and works continuously

Enhanced car frame (chassis and platform)
Large shelf wider and thicker , several centimeters thicker than the old model , the whole vehicle is stable and powerful



Details Display



New design

Die cover stamping, beautiful upper grade

Reinforced rubber track durable

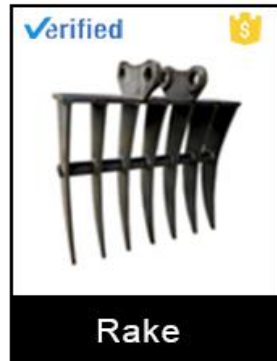


Handle and control list, easy to learn

Can be matched with a variety of front-end furniture, suitable for a variety of different working conditions.



Accessories supply



Rake



Gripper



Mechanical claw



Ripper



Breaking hammer



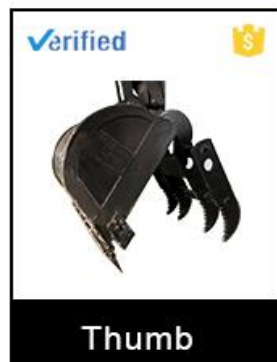
Auger



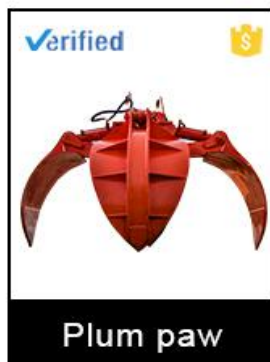
Buckets



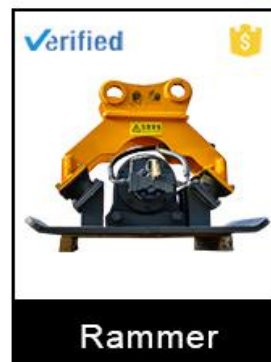
Quick connector



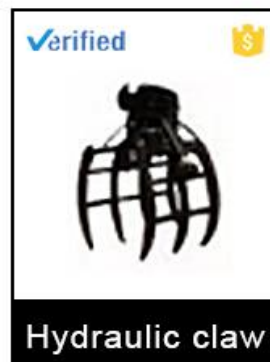
Thumb



Plum paw



Rammer



Hydraulic claw

Technical Specifications



SD13D hydraulic excavator size parameters	
Code item	Code size
Total length	2780mm
Total height	2150mm
Overall width	930mm
Track width	180mm
Platform turning radius	883mm
Track length	1195mm
Wheelbase	845mm
Ground clearance	150mm
Total boom height	1107mm
Platform width	800mm
Platform height from the ground	430mm
SD13D hydraulic excavator operating range	
Code item	Code size
Maximum digging height	2637mm, (2930mm)
Maximum unloading height	2170mm
Maximum vertical digging depth	1336mm, (1552mm)
Maximum digging radius	3072mm
Maximum ground level digging distance	3300mm

Digging radius of maximum digging height	2200mm
Minimum radius of gyration	1425mm
The maximum depth of the bulldozing board from the ground	170mm
The maximum height of the bulldozing board from the ground	185mm
SD13D hydraulic excavator performance parameters	
Project name	SD13D hydraulic excavator performance parameters
Engine model	KOOP, 192F (air-cooled diesel engine)Kubota, D722-EF11 crude oil engine)
Power	7.6kw/3000rpm;10.2kw/2500rpm
Work pressure	16 MPAA
Maximum digging force of bucket	6.5 KN
Gradeability	25°
Ground pressure	35Kpa
Walking speed	2.1km/h
Main pump flow	21.6 (L/Min)/25 (L/Min)
Platform rotation speed	13rpm/Min
Bucket capacity	0.025 m ³
Boom swing angle	left 42° , right 62°
Overall quality	1013 KG/1035 KG



SD17-9

mini excavator

Product Overview



EXCAVATOR SD17-9

Widely used in orchard nursery, landscaping, mountain reclamation, farmland transformation, indoor demolition and other operations

Product Overview



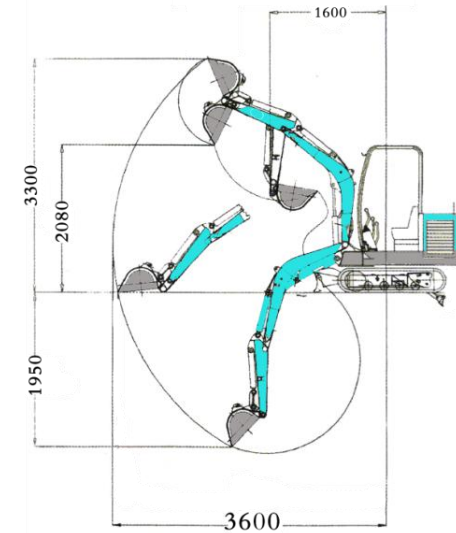
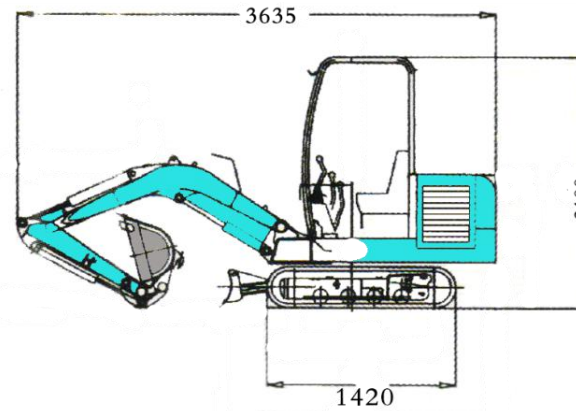
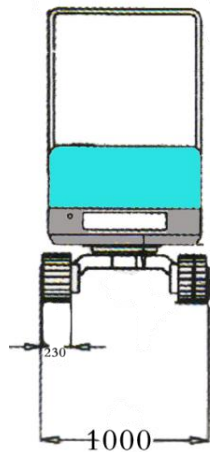
This SD17-9 small excavator weighs about 1580 kg ➤

relatively small and flexible ➤

LAIDONG380, Engine power 13.6 KW ➤

bucket capacity 0.06 m ➤





- | | |
|--------------------------------|--------------------------------|
| 1. Overall Width: 1000mm | 5. Boom Length: 1650mm |
| 2. Overall Length: 3635mm | 6. Track Length: 1420mm |
| 3. Max. Digging Height: 3300mm | 7. Max Dumping Height: 2080mm |
| 4. Max Digging Depth: 1950mm | 8. Max. Digging Radius: 3600mm |

Details Display



Reinforced arm design

Improve structure, disperse stress, improve stability and durability of structure



Add hydraulic oil radiator and respirator ,
powerful cooling fan , etc
Reli eve the high temperature phenomenon
and works continuously

Add cylinder guard plate and bottom protection
device , pipeline hidden type design.
Prevent scratches and damage in all parts.



Enh anced car frame (chassis and platform)
Large shelf wider and thicker , several
centimeters thicker than the old model , the
whole vehicle is stable and powerful



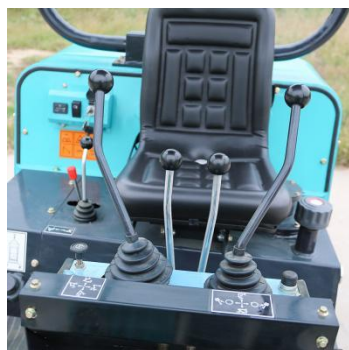
Details Display



New design

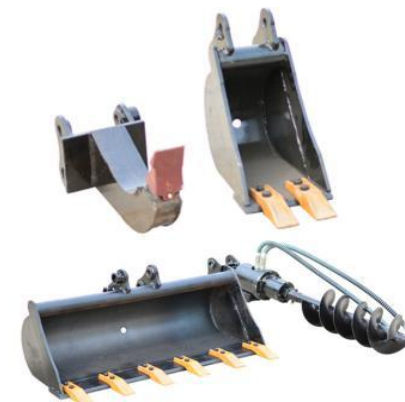
Die cover stamping, beautiful upper grade

Reinforced rubber track durable

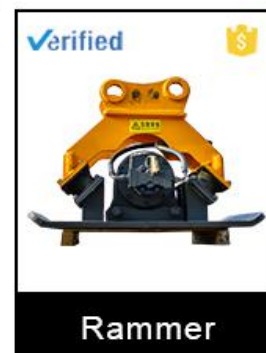
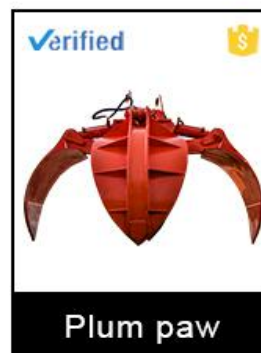
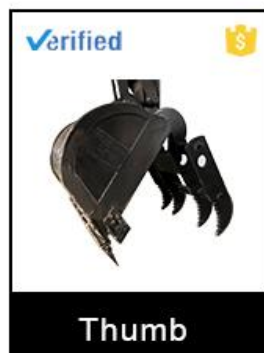
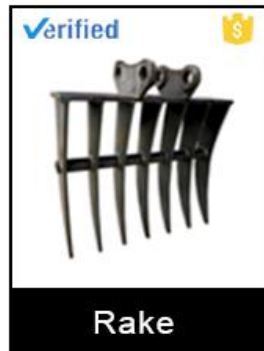


Handle and control list, easy to learn

Can be matched with a variety of front-end furniture, suitable for a variety of different working conditions.



Accessories supply



Technical Specifications



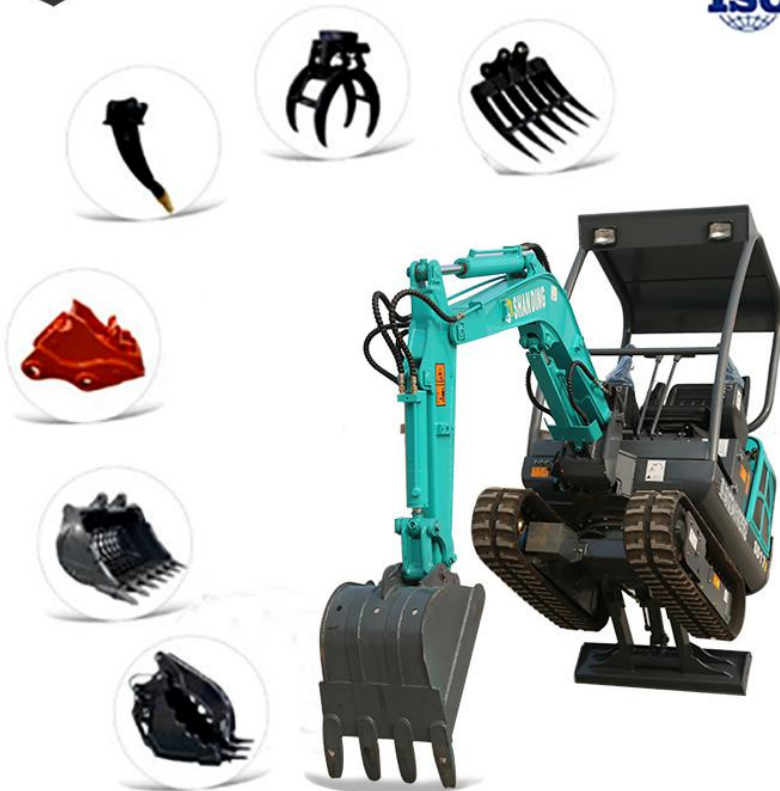
Overall size		Machine parameters	
Min Radius of Gyration	1600mm	Weight	1580Kg
Min Ground Clearance	305mm	Bucket Capacity	0.06m ³
Platform Width	980mm	Rated Power	13.6KW
Engine hood height	1170mm	Rated Rotation Speed	2200r/min
Platform Height Above Ground	480mm	Max Hydraulic Pressure	16MPa
Bucket Width	450mm	Max. Grade	30°
Transport Length	3500mm	Ground Pressure	27.5N/m ²
Working range		Max. Walking Speed	2.9Km/h
Max. Digging Height	3300mm	Max. Traction	11.5KN
Max. Dumping Height	2080mm	Max Platform Rotation Speed	10rpm
Max. Digging Depth	1950mm	Max Bucket Digging Force	10.5KN
Max Digging Radius	3600mm	Machine configure	
Digging Radius of Max. Digging Height	2410mm	Model No.	SD17-9
Radius of Tail Gyration	1180mm	Engine Model	LAIDONG380
Max. Sinking Depth of Bulldozer	200mm	Main Pump	Three Pump System
Max. Lifting Height of Bulldozer	205mm	Rotation/Walking Motor	Imported Motor
Boom Length	1650mm	As the technology is constantly updated, materials and technical specifications are subject to change without notice.	
Arm Length	900mm		
Bucket Width	440mm		



SD17B

mini excavator

Product Overview



EXCAVATOR SD17B

Widely used in orchard nursery, landscaping, mountain reclamation, farmland transformation, indoor demolition and other operations

Product Overview



This SD17B mini excavator weighs about 1600 kg ➤

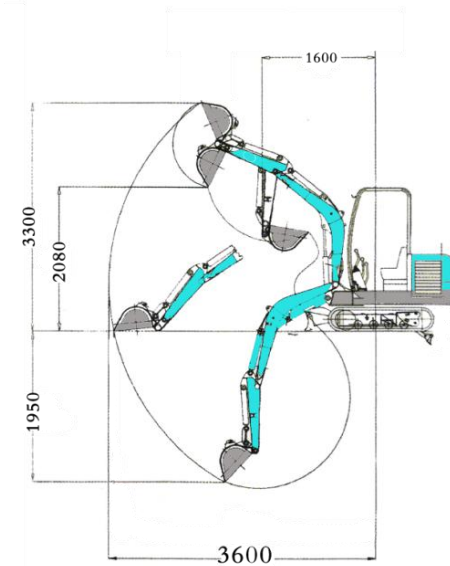
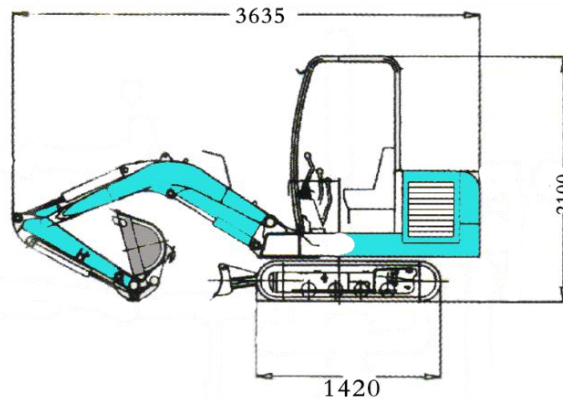
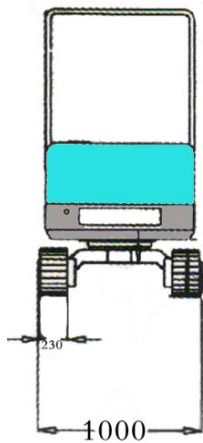
relatively small and flexible ➤

Laidong ,Perkins,Yanmar ,Engine power14.8 /14.7/10 kw ➤

bucket capacity 0.06 m ➤

Optional cab

Technical Specifications



- | | |
|--------------------------------|--------------------------------|
| 1. Overall Width: 1000mm | 5. Boom Length: 1650mm |
| 2. Overall Length: 3635mm | 6. Track Length: 1420mm |
| 3. Max. Digging Height: 3300mm | 7. Max Dumping Height: 2080mm |
| 4. Max Digging Depth: 1950mm | 8. Max. Digging Radius: 3600mm |

Details Display



Reinforced arm design

Improve structure, disperse stress, improve stability and durability of structure

Add cylinder guard plate and bottom protection device , pipeline hidden type design. Prevent scratches and damage in all parts.



Add hydraulic oil radiator and respirator , powerful cooling fan , etc
Relieve the high temperature phenomenon and works continuously

Enhanced car frame (chassis and platform)
Large shelf wider and thicker , several centimeters thicker than the old model , the whole vehicle is stable and powerful



Details Display



New design

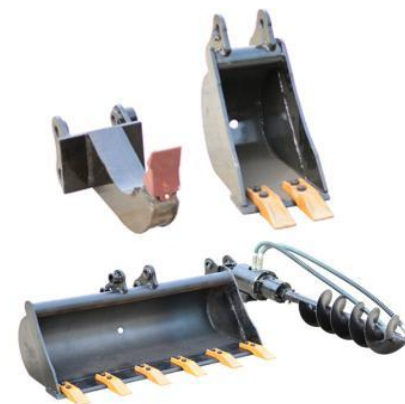
Die cover stamping, beautiful upper grade

Reinforced rubber track durable

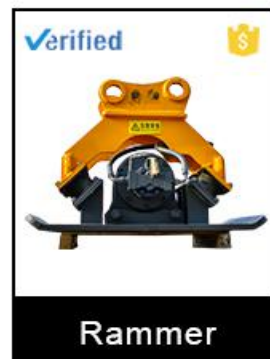
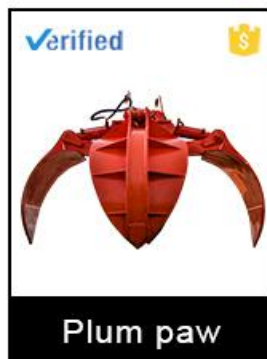
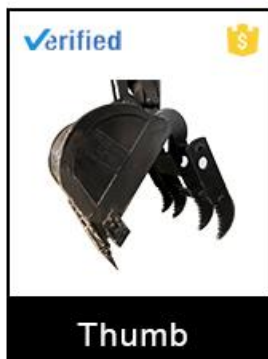
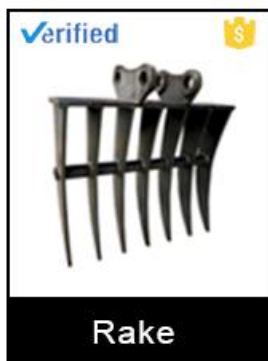


Handle and control list, easy to learn

Can be matched with a variety of front-end furniture, suitable for a variety of different working conditions.



Accessories supply



Technical Specifications



Machine parameters		Dimensions	
Model	SD17B	Overall Length	3635mm
Operating Weight	1600Kg	Overall Width	1000mm
Bucket Capacity	0.06m ³	Overall Height	2150mm
Rated Power	14.8 kw,14.7 kw,10 kw	Arm Length	900mm
Max.Hydraulic System Pressure	16mpa	Boom Length	1650mm
Max. Grade ability	30°	Track Length	1420mm
Max. Ground Pressure	23.7N/m ²	Track Width	230mm
Max Walking Speed	2.9Km/h	Ground Clearance	305mm
Max. Traction	10KN	Platform Width	990mm
Platform Rotary Speed	9-11r/min	Platform Ground Clearance	480mm
Boom swing function	yes	Bucket Width	450mm
Telescopic chassis	optional	Working range	
Machine configure		Max. Digging Height	3300mm
Engine Model	Laidong ,Perkins,Yanmar	Max Digging Depth	1950mm
Main valve	Husco	Max. Digging Radius	3600mm
Main Pump	Futai 3 pumps system	Max Dumping Height	2080mm
Rotation Motor	Eaton	Radius of Tail Gyration	1180mm
Walking Motor	SANYO	Max. Sinking Depth of Bulldozer	200mm
		Max. Lifting Depth of Bulldozer	225mm



SD18U

mini excavator

Product Overview



EXCAVATOR SD18U

Widely used in orchard nursery, landscaping, mountain reclamation, farmland transformation, indoor demolition and other operations

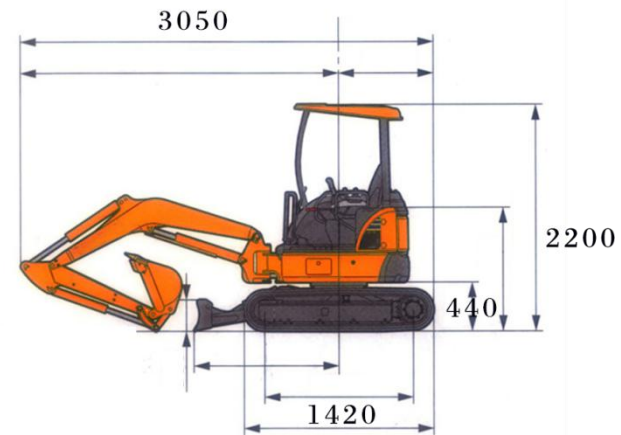
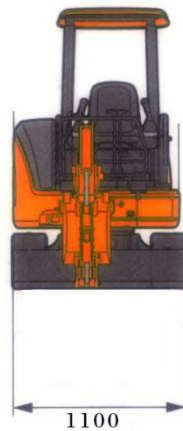
Product Overview



- This SD18U small excavator weighs about 2100kg ➤
- relatively small and flexible ➤
- Perkins, Engine power 14.7 kw ➤
- bucket capacity 0.06 m ➤



Technical Specifications



- | | |
|--------------------------------|--------------------------------|
| 1. Overall Width: 1100mm | 5. Boom Length: 1650mm |
| 2. Overall Length: 3050mm | 6. Track Length: 1420mm |
| 3. Max. Digging Height: 3350mm | 7. Max Dumping Height: 2250mm |
| 4. Max Digging Depth: 2042mm | 8. Max. Digging Radius: 3600mm |

Details Display



Reinforced arm design

Improve structure, disperse stress, improve stability and durability of structure

Add cylinder guard plate and bottom protection device , pipeline hidden type design.
Prevent scratches and damage in all parts.



Add hydraulic oil radiator and respirator ,
powerful cooling fan , etc
Reli eve the high temperature phenomenon
and works continuously

Enh anced car frame (chassis and platform)
Large shelf wider and thicker , several
centimeters thicker than the old model , the
whole vehicle is stable and powerful



Details Display



New design

Die cover stamping, beautiful upper grade

Reinforced rubber track durable

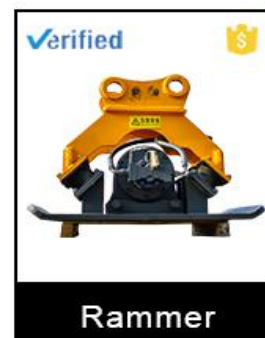
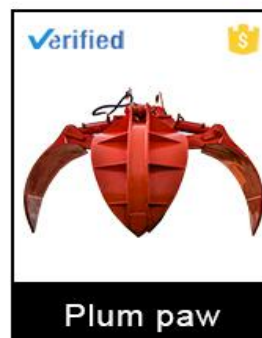
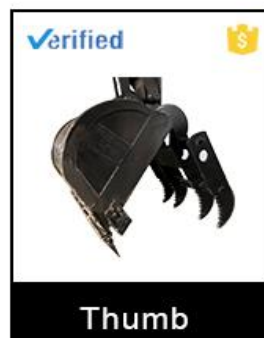
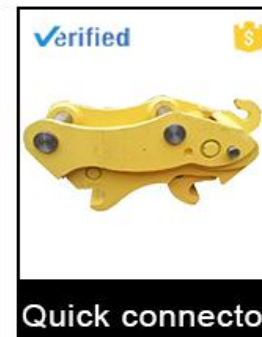
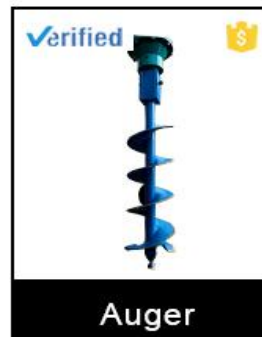
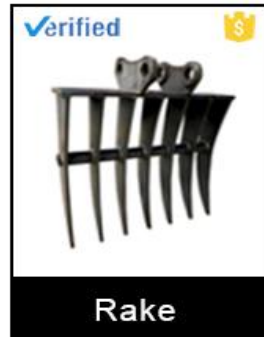


Handle and control list, easy to learn

Can be matched with a variety of front-end furniture, suitable for a variety of different working conditions.



Accessories supply



Technical Specifications



Machine parameters		Dimensions	
Model	SD18U	Overall Length	3050mm
Operating Weight	1.8ton	Overall Width	1100mm
Bucket Capacity	0.06m ³	Overall Height	2200mm
Rated Power	14.7 kw	Arm Length	920mm
Max.Hydraulic System Pressure	18mpa	Boom Length	1650mm
Max. Grade ability	30°	Track Length	1420mm
Max Walking Speed	2.8km/h	Track Width	230mm
Max. Traction	16kn	Platform Width	950mm
Platform Rotary Speed	14 r/min	Platform Ground Clearance	440mm
Boom swing function	optional	Bucket Width	440mm
Crawler stretch function	optional	Working range	
Machine configure		Max. Digging Height	3350mm
Engine Model	Perkins	Max Digging Depth	2042mm
Main valve	Beifang	Max. Digging Radius	3600mm
Main Pump	Futai 3 pumps system	Max Dumping Height	2250mm
Rotation Motor	Eaton	Radius of Tail Gyration	790mm
Walking Motor	Eaton	Max. Sinking Depth of Bulldozer	195mm
As the technology is constantly updated, materials and technical specifications are subject to change without notice.		Max. Lifting Depth of Bulldozer	200mm



SD20U

mini excavator

Product Overview



EXCAVATOR SD20U

This 20U small excavator is an efficiency type model, the system is mature and stable, and the leather is resistant to construction. It is widely used in orchard nursery, landscaping, mountain reclamation, farmland reconstruction, indoor demolition and other operations.

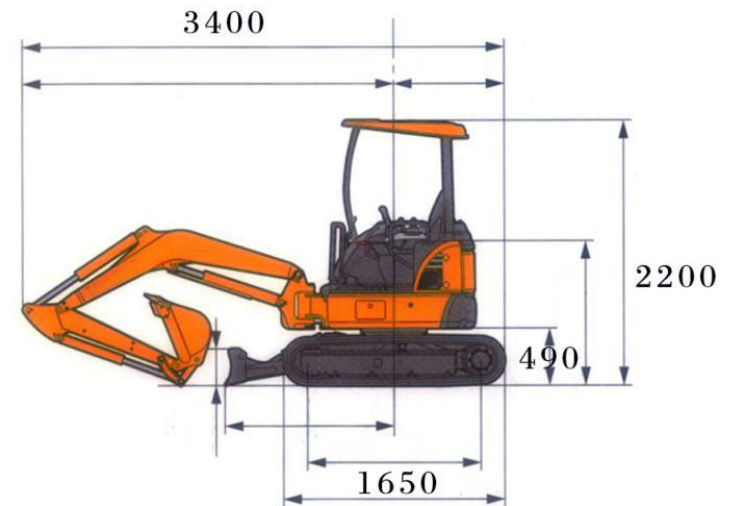
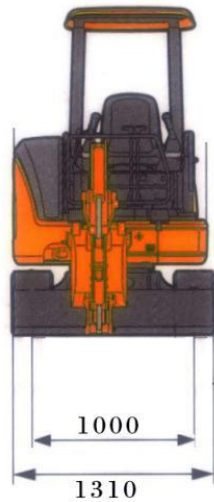
Product Overview



- This SD20B small excavator weighs about 2000kg
- relatively small and flexible
- LD385B, Engine power 14.7KW
- bucket capacity 0.06 m³



Technical Specifications



- | | |
|--------------------------------|--------------------------------|
| 1. Overall Width: 1100-1300mm | 5. Boom Length: 1700mm |
| 2. Overall Length: 3400mm | 6. Track Length: 1420mm |
| 3. Max. Digging Height: 3400mm | 7. Max Dumping Height: 2400mm |
| 4. Max Digging Depth: 2050mm | 8. Max. Digging Radius: 3600mm |

Details Display



New design of appearance
It's made of die-formed covering parts by stamping, with beautiful appearance and high grade.



Design of reinforced boom, arm and bucket
Improve structure, disperse stress, improve stability and durability of structure



Tailless slewing & boom sway
Two major functions are provided at the same time, and barrier free construction is available in complex environment (wall root, pipeline, indoor, etc.)

three pump hydraulic system
Four linkage can be realized to ensure the simultaneous operation of bucket, boom, arm and rotation, and the operation is fast and smooth



Details Display



Boom sway

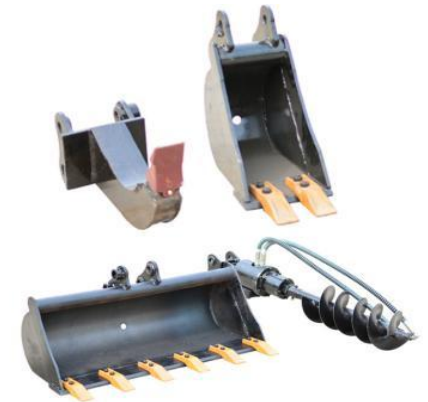
Help you to deal with complex environment (wall root, pipeline, indoor, etc.) and barrier free construction.

Reinforced rubber track durable

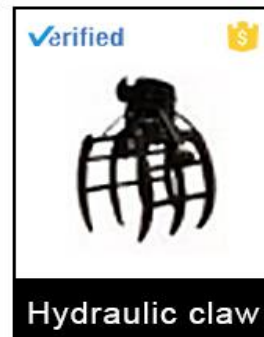
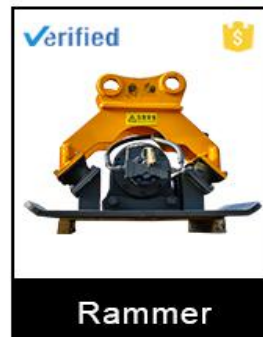
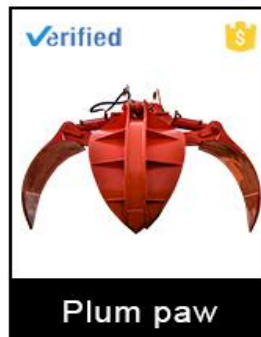
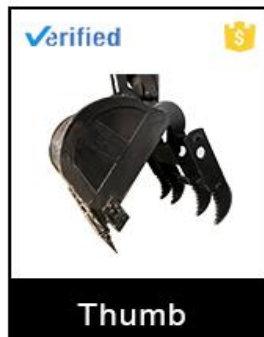
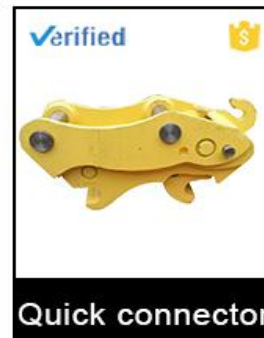
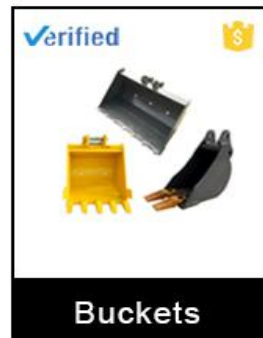
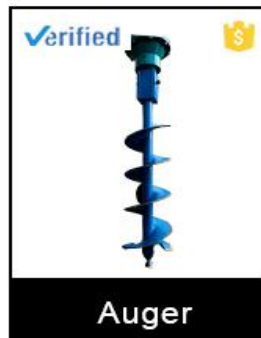
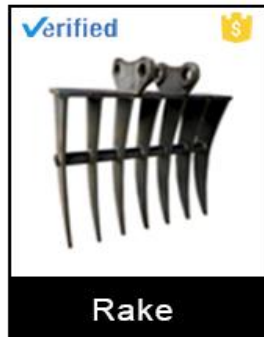


Matched with 14.7kw imported engine, powerful
The tailless excavator has the highest power efficiency, strong power, low noise and low fuel consumption, meeting the T3 emission standard

Can be matched with a variety of front-end furniture, suitable for a variety of different working conditions.



Accessories supply



Technical Specifications



Machine parameters		Dimensions	
Model	SD20U	Overall Length	3400mm
Operating Weight	2 ton	Overall Width	1100-1300mm
Bucket Capacity	0.06m ³	Overall Height	2200mm
Rated Power	10kw ,11.2kw,14.7 kw	Arm Length	950mm
Max.Hydraulic System Pressure	18mpa	Boom Length	1700mm
Max. Grade ability	30°	Track Length	1550mm
Max Walking Speed	2.8-4.1km/h	Track Width	230mm
Max Digging Force	16kn	Platform Width	970mm
Platform Rotary Speed	14 r/min	Platform Ground Clearance	480mm
Boom swing function	yes	Bucket Width	450mm
Crawler stretch function	optional	Machine configure	
Working range		Engine Model	Yanmar , Perkins
Max. Digging Height	3400mm	Main valve	Beifang / Husco
Max Digging Depth	2050mm	Main Pump	Futai (3 pumps system , gear pump)
Max. Digging Radius	3600mm		Taifeng (Plunger pump)
Max Dumping Height	2400mm	Rotation Motor	Eaton
Radius of Tail Gyration	670mm	Walking Motor	Eaton
Max. Sinking Depth of Bulldozer	195mm	The above pictures are for reference only. If there is any change, no further notice will be given.	
Max. Lifting Depth of Bulldozer	200mm		



SD25B

mini excavator

Product Overview



SHANDING



EXCAVATOR SD25B

This 25B small excavator is an efficiency type model, the system is mature and stable, and the leather is resistant to construction. It is widely used in orchard nursery, landscaping, mountain reclamation, farmland reconstruction, indoor demolition and other operations.

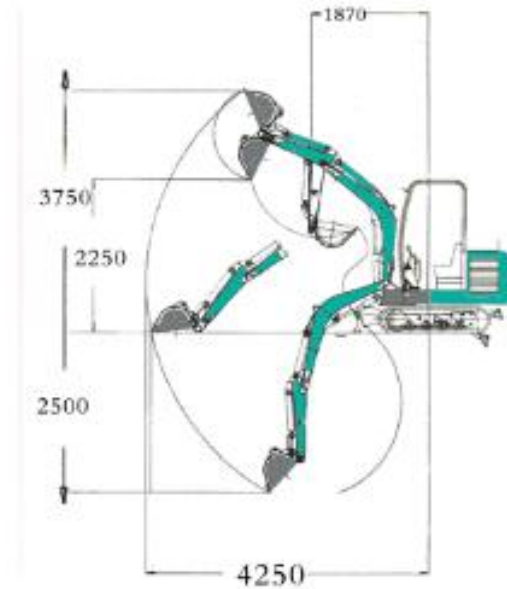
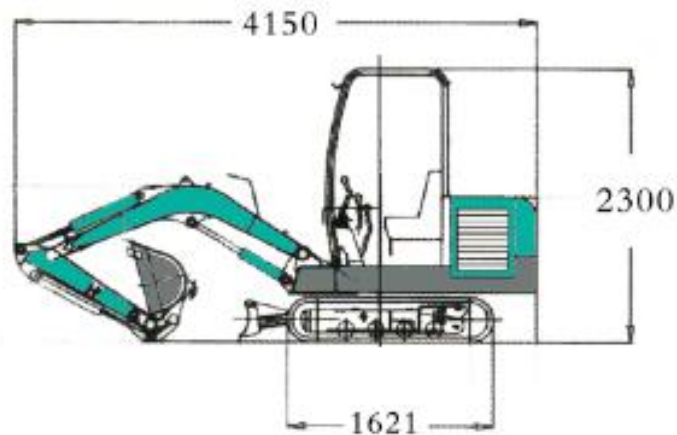
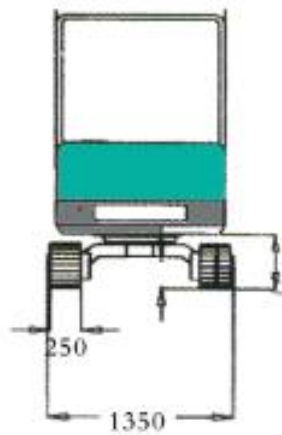
Product Overview



- This SD20B small excavator weighs about 2500kg
- relatively small and flexible
- LD385B, Engine power 24.5kw
- bucket capacity 0.1 m³



Technical Specifications



1. Overall Width: 1350mm
2. Overall Length: 4150mm
3. Max. Digging Height: 3750mm
4. Max Digging Depth: 2500mm
5. Boom Length: 2000mm
6. Track Length: 1621mm
7. Max Dumping Height: 2250mm
8. Max. Digging Radius: 4250mm

Details Display



New design of appearance
It's made of die-formed covering parts by stamping, with beautiful appearance and high grade.

Standard "high efficiency king"
Set strength, speed, size, efficiency and other comprehensive performance index ranking the highest



Design of reinforced boom, arm, bucket and chassis Improve structure, disperse stress, improve stability and durability of structure

Three pump hydraulic system
Four linkage can be realized to ensure the simultaneous operation of bucket, boom, arm and rotation, and the operation is fast and smooth



Details Display



Matching with imported hydraulic parts such as HUSCO main valve and Eaton motor (with pictures)
Fast action, coordinated compound action, high reliability and long service life

Reinforced rubber track durable

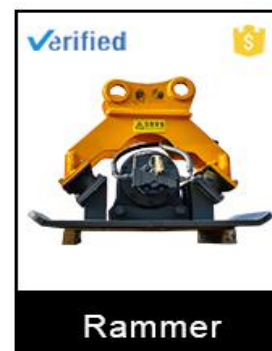
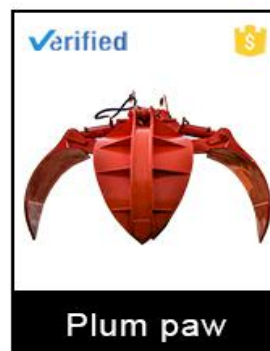
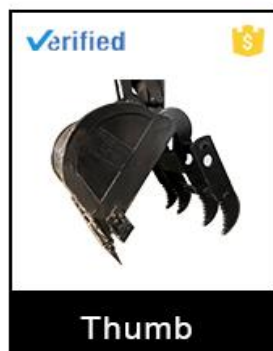
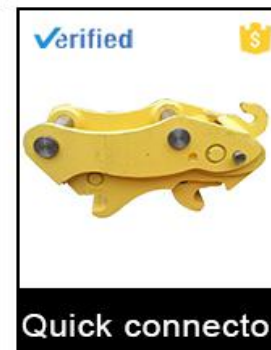
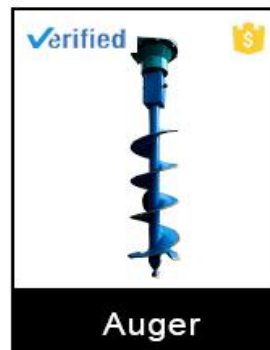
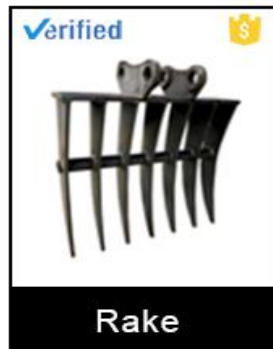
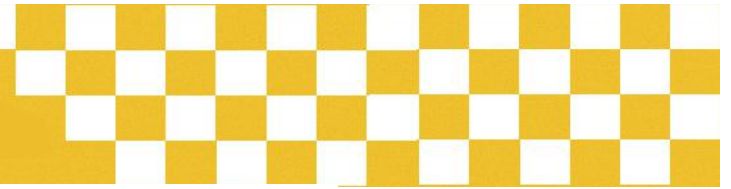


Enhanced bulldozer, improved efficiency

Can be matched with a variety of front-end furniture, suitable for a variety of different working conditions.



Accessories supply



Technical Specifications



Machine parameters		Dimensions	
Model	SD25B	Overall Length	4150mm
Operating Weight	2.5 ton	Overall Width	1350mm
Bucket Capacity	0.1m ³	Overall Height	2300mm
Rated Power	24.5kw ,19.6kw,15.2 kw	Arm Length	1100mm
Max.Hydraulic System Pressure	18mpa	Boom Length	2000mm
Max. Grade ability	30°	Track Length	1621mm
Max Walking Speed	2.7km/h	Track Width	250mm
Max Digging Force	19kn	Platform Width	1160mm
Platform Rotary Speed	14 r/min	Platform Ground Clearance	500mm
Boom swing function	yes	Bucket Width	540mm
Working range		Machine configure	
Max. Digging Height	3750mm	Engine Model	Changchai , Yanmar
Max Digging Depth	2500mm	Main valve	Husco
Max. Digging Radius	4250mm	Main Pump	Futai (3 pumps system)
Max Dumping Height	2250mm	Rotation Motor	Eaton
Platform turning radius	1800mm	Walking Motor	Eaton
Max. Sinking Depth of Bulldozer	185mm	The above pictures are for reference only. If there is any change, no further notice will be given.	
Max. Lifting Depth of Bulldozer	210mm		



SD25U

mini excavator

Product Overview



SHANDING



**2.5 TON
MINI EXCAVATOR**

EXCAVATOR SD25U

This 25U mini excavator is an efficiency type model, the system is mature and stable, and the leather is resistant to construction. It is widely used in orchard nursery, landscaping, mountain reclamation, farmland reconstruction, indoor demolition and other operations.

Product Overview



This SD25U mini excavator weighs about 2500kg ➤

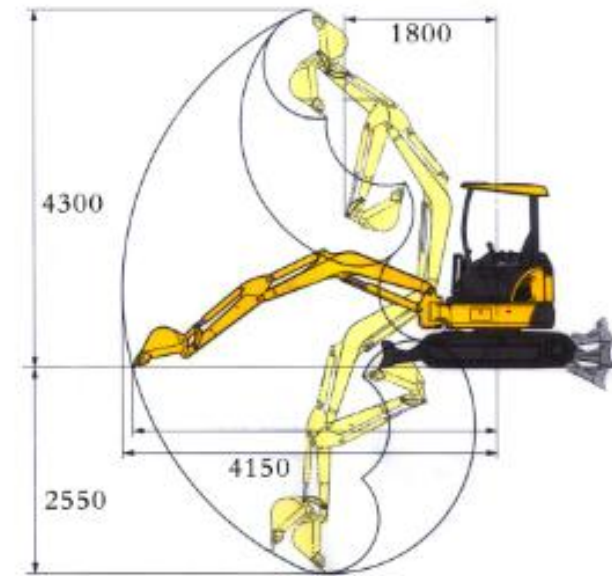
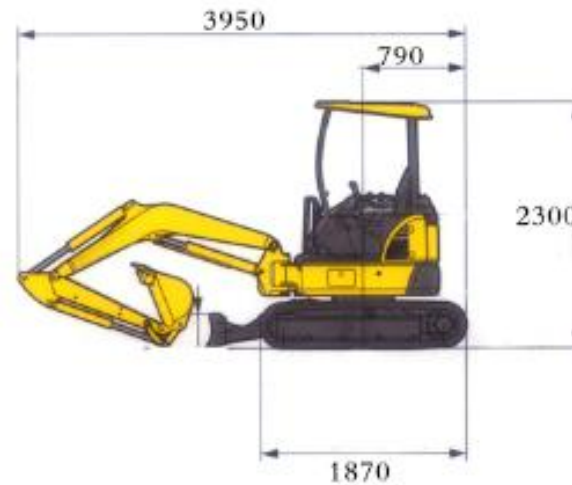
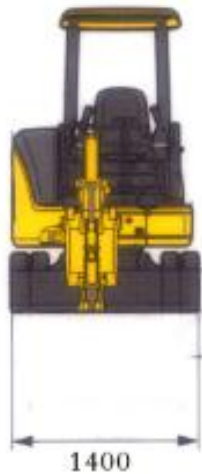
relatively small and flexible ➤

Perkins, Engine power 14.7KW ➤

bucket capacity 0.1 m³ ➤



Technical Specifications



- | | |
|--------------------------------|--------------------------------|
| 1. Overall Width: 1400mm | 5. Boom Length: 1950mm |
| 2. Overall Length: 3950mm | 6. Track Length: 1870mm |
| 3. Max. Digging Height: 4300mm | 7. Max Dumping Height: 2530mm |
| 4. Max Digging Depth: 2550mm | 8. Max. Digging Radius: 4150mm |

Details Display



360° ALL DISPLAY



New design of appearance
It's made of die-formed covering parts by stamping, with beautiful appearance and high grade



Tailless slewing & boom sway
Two major functions are provided at the same time, and barrier free construction is available in complex environment (wall root, pipeline, indoor, etc.)



Enhanced bulldozer to improve efficiency



Design of reinforced boom, arm , bucket and chassis
Improve structure, disperse stress, improve stability and durability of structure

Details Display



Open hood
(make daily routine inspection and
maintenance work faster and more efficient)

Matching with the imported hydraulic parts
such as HUSCO main valve and Eaton motor
(with pictures)
Fast action, coordinated compound action,
high reliability and long service life

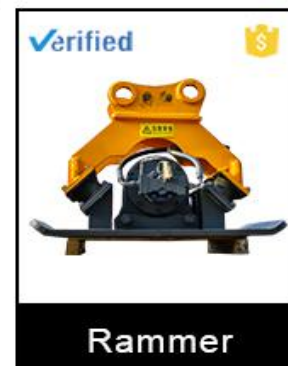
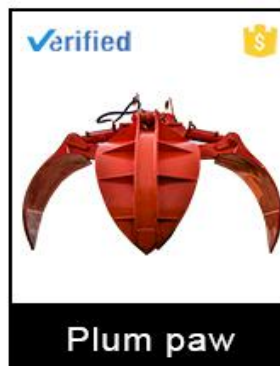
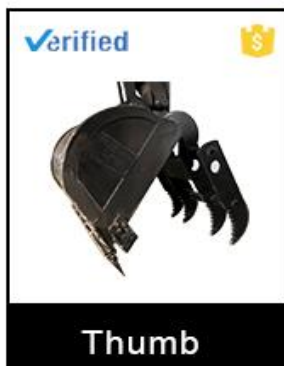
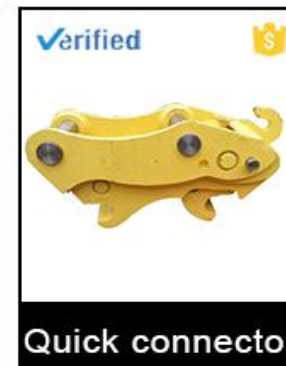
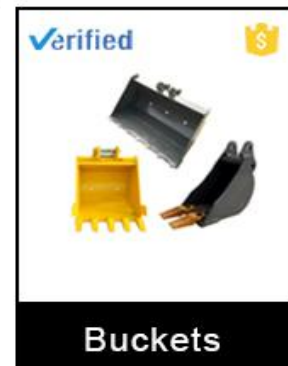
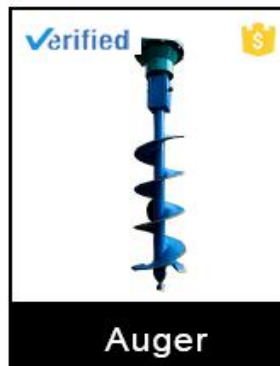
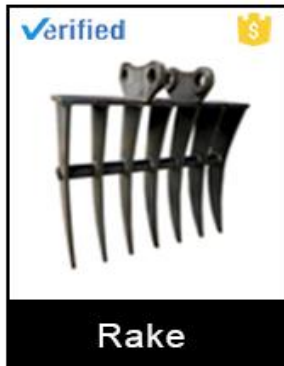


Matched with 14.7kw imported engine, powerful
The tailless excavator has the highest power
efficiency, strong power, low noise and low fuel
consumption, meeting the T3 emission standard

Can be matched with a variety of front-end
furniture, suitable for a variety of different
working conditions.



Accessories supply



Technical Specifications



Overall size		Max Platform Rotation Speed	11rpm
Overall Length	3950mm	Max Digging Force	15KN
Overall Width	1400mm	Working range	
Overall Height	2300mm	Max. Digging Height	4300mm
Minimum radius of gyration	790mm	Max. Dumping Height	2530mm
Track Length	1870mm	Max. Digging Depth	2550mm
Track Width	250mm	Max Digging Radius	4150mm
Min. Ground Clearance	250mm	Digging Radius of Max. Digging Height	2700mm
Platform Width	1330mm	Min. Radius of Gyration	1800mm
Engine hood height	1350mm	Max. Sinking Depth of Bulldozer	300mm
Platform Height Above Ground	480mm	Max. Lifting Height of Bulldozer	330mm
Machine parameters		Numbers of track shoe sections on one side	44pieces
Weight	2420Kg	Boom Length	1950mm
Bucket Capacity	0.1m ³	Arm Length	950mm
Rated Power	14.7KW	Bucket Width	450mm
Rated Rotation Speed	2200r/min	Machine configure	
Max Hydraulic Pressure	18MPa	Model No.	SD25u
Max. Grade	30°	Engine Model	PerKins403d-11
Ground Pressure	35kpa	Main Pump	TAIFENG TFA10VS025DFLR/31R-PSA12N00
Max. Walking Speed	2.5-3.5Km/h	Rotation Motor	Eaton 2.5K-245
Max. Traction	16KN	Walking Motor	Wolf Technology-LTM-03c



SD30-9B

mini excavator

Product Overview



EXCAVATOR SD30-9B

SD30-9B mini excavator is one of the earliest vehicles developed by the company. The imported hydraulic system is mature and stable, the leather is solid and durable, the design on the side of the mailbox is convenient for maintenance, and the elongated large and small arms can dig deep, reach far and lift high.

Product Overview

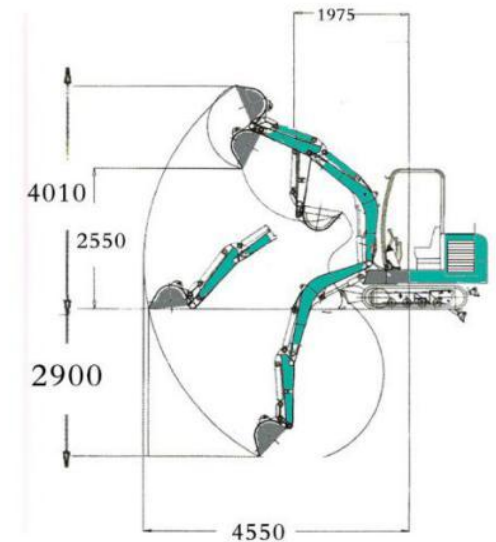
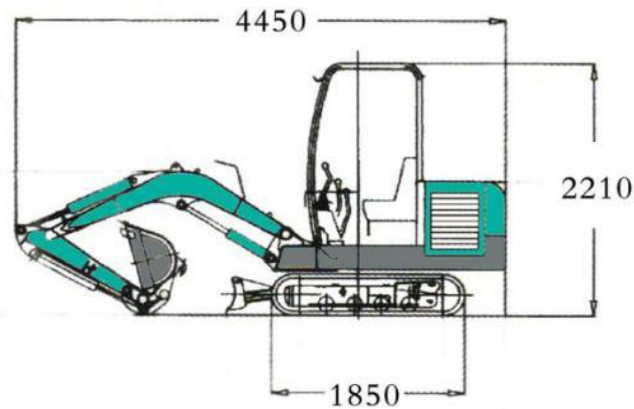
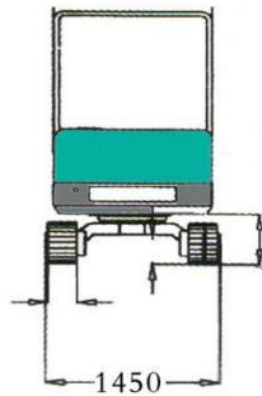


- This SD30-9B mini excavator weighs about 2600kg
- relatively small and flexible
- Changchai390, Engine power 20KW
- bucket capacity 0.11 m³

optional Cabin



Technical Specifications



- | | |
|--------------------------------|--------------------------------|
| 1. Overall Width: 1450mm | 5. Boom Length: 2150mm |
| 2. Overall Length: 4450mm | 6. Track Length: 1850mm |
| 3. Max. Digging Height: 4010mm | 7. Max Dumping Height: 2550mm |
| 4. Max Digging Depth: 2900mm | 8. Max. Digging Radius: 4550mm |

Details Display



New design of appearance
It's made of die-formed covering parts by stamping, with beautiful appearance and high grade.

losed cab, beautiful and practical



Design of reinforced boom, arm, bucket and chassis
Improve structure, disperse stress, improve stability and durability of structure

Design of reinforced boom
Improve structure, disperse stress, improve stability and durability of structure



Details Display



Unique design structure of the whole machine
As the design structure of large excavation, the
balance between front and back is strong

Enhanced bulldozer to improve efficiency

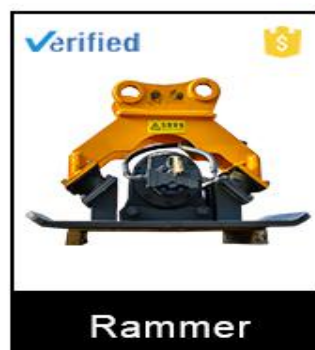
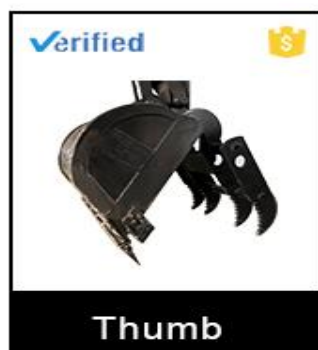
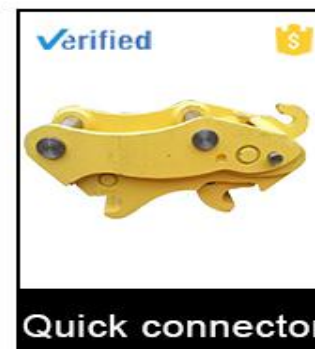
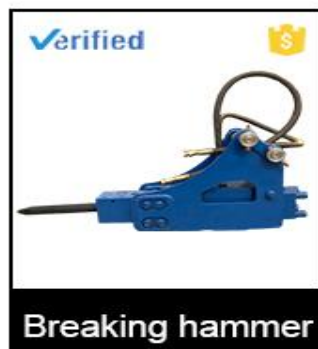
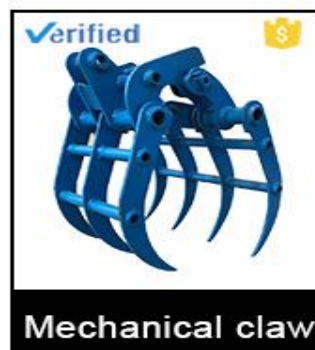
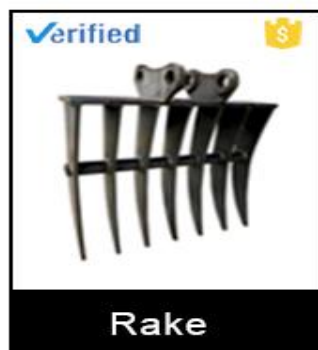


Matching with imported hydraulic parts such as HUSCO main
valve and Nachi motor (with pictures)
Fast action, coordinated compound action, high reliability and
long service life

Can be matched with a variety of front-end furniture,
suitable for a variety of different working conditions.



Accessories supply



Technical Specifications



Overall size		Machine parameters	
Overall Length	4450mm	Machine Weight	2600Kg
Overall Width	1450mm	Bucket Capacity	0.11m ³
Overall Height	2210mm	Rated Power	20KW
Radius of Tail Gyration	1975mm	Rated Rotary speed of Engine	2200r/min
Track Length	1850mm	Hydraulic Pressure	18MPa
Track Width	280mm	Max Grade	30°
Min Ground Clearance	295mm	Ground Pressure	32kpa
Platform Width	1250mm	Max Travel Speed	2.7Km/h
Engine hood height	1320mm	Max. Traction	18KN
Platform Height Above Ground	560mm	Max Platform Rotation Speed	11rpm
Boom Length	2150mm	Working range	
Bucket Width	550mm	Max. Digging Height	4010mm
Arm Length	1150mm	Max. Dumping Height	2550mm
Machine configure		Max. Digging Depth	2900mm
MODEL NO	SD30-9B	Max Digging Radius	4550mm
Engine No	Changchai390	Digging Radius of Max. Digging Height	2420mm
Pump	Three pump hydraulic system (gear pump)	Min. Radius of Gyration	1995mm
Rotary Motor	NACHI	Max. Sinking Depth of Bulldozer	170mm
Travel Motor	Eaton	Max. Lifting Height of Bulldozer	205mm



SD30U

mini excavator

Product Overview



EXCAVATOR SD30U

This 30U small excavator is an efficiency type model, the system is mature and stable, and the leather is resistant to construction. It is widely used in orchard nursery, landscaping, mountain reclamation, farmland reconstruction, indoor demolition and other operations.

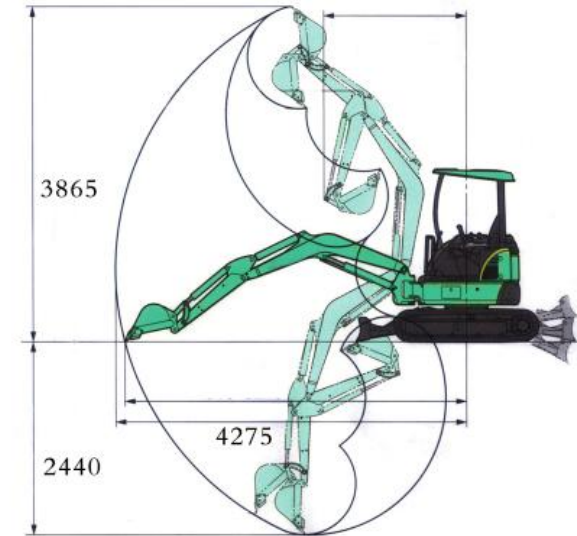
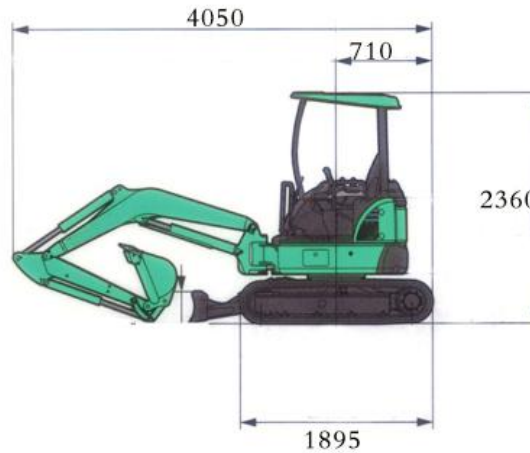
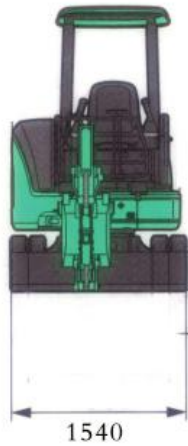
Product Overview



- This SD30U small excavator weighs about 2870kg
- relatively small and flexible
- Perkins , engine power 14.7kw
- bucket capacity 0.075m³



Technical Specifications



- | | |
|--------------------------------|----------------------------------|
| 1. Overall Width: 1540mm | 5. Boom Length: 2150mm |
| 2. Overall Length: 4050mm | 6. Track Length: 1895mm |
| 3. Max. Digging Height: 3865mm | 7. Max Dumping Height: 2760mm |
| 4. Max Digging Depth: 2560mm | 8. Max. Digging distance: 4375mm |

Details Display



New design of appearance
It's made of die-formed covering parts by stamping, with beautiful appearance and high grade

Tailless models, small radius of rotation, more flexible



Enhanced bulldozer to improve efficiency

Lengthened large arm, digging deep, far enough, lift high, the general loading requirements can be met.



Details Display



Open hood
(make daily routine inspection and maintenance
work faster and more efficient)

Design of reinforced boom, arm, bucket and
chassis
Improve structure, disperse stress, improve
stability and durability of structure

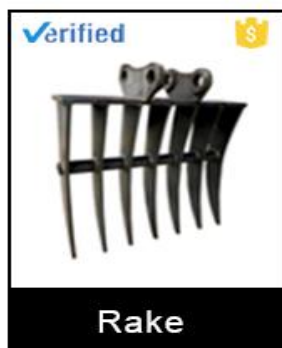


Assembly of environmentally friendly engines
Fuel saving, silent, green emission and strong power of
the engine, to meet the T3 emission

Can be matched with a variety of front-end furniture,
suitable for a variety of different working conditions.



Accessories supply



Rake



Gripper



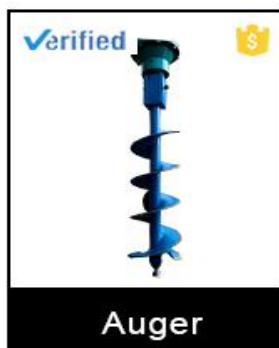
Mechanical claw



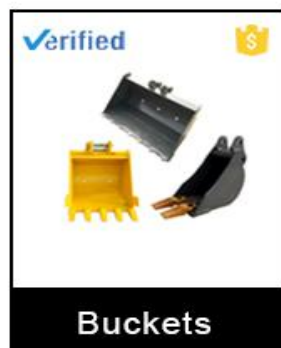
Ripper



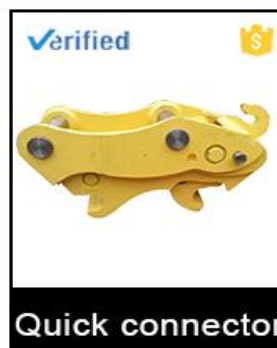
Breaking hammer



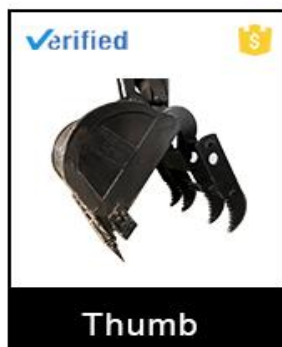
Auger



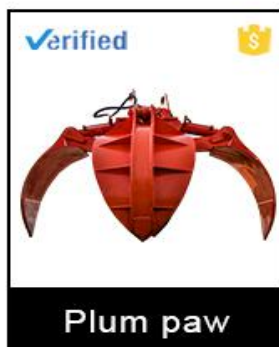
Buckets



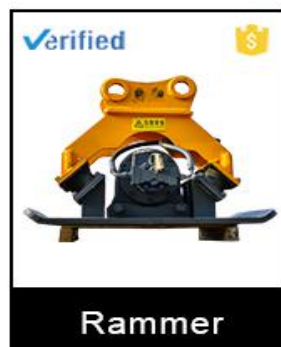
Quick connector



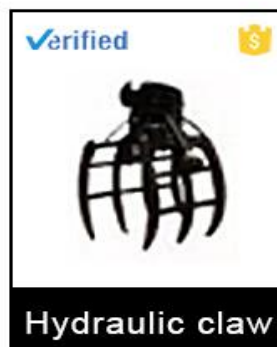
Thumb



Plum paw







Rammer




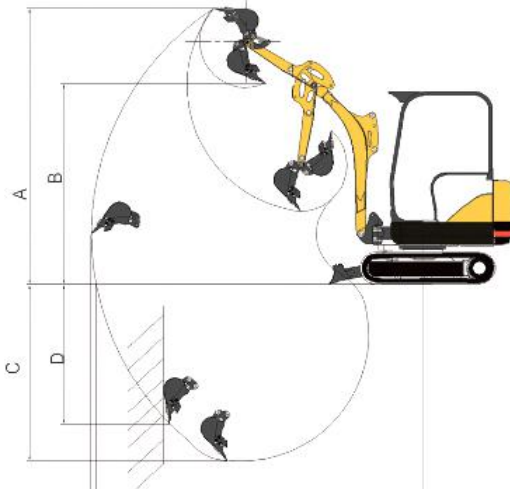


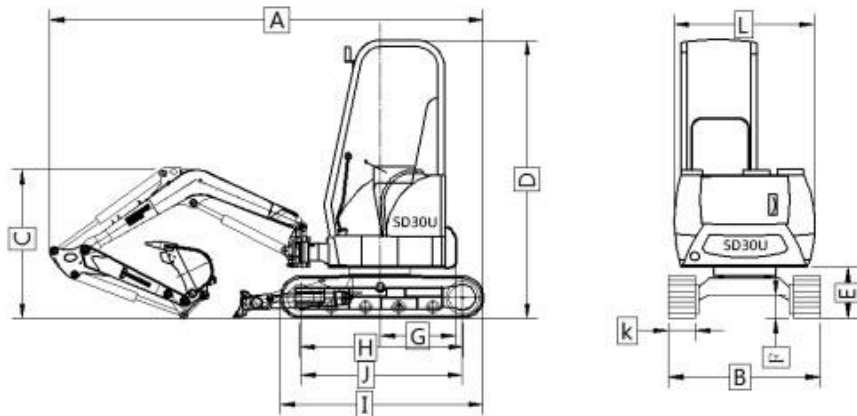
Hydraulic claw

Technical Specifications



 Engine		 Travel System	
Model	Perkins 403D-11/403J-11 EPA	Travel motors	LTM03CJ Plunger double speed
Type	Water cooling, natural inhalation	Support roller quantities	2×3
		Carrier roller quantities	2×1
No. of cylinder	3	Travel shoes	No
Bore and stroke	80x84(mm)	Travel speed	High speed : 4.3km/h, Low speed: 2.3km/h,
Displacement	1.267L	Drawbar pulling force	14.2kN
Power output	15.2kw/2200rpm	Gradeability	58%(30 ⁰)
Max. torque	63-67.3N.m/1800rpm	Track shoes thickness	Rubber track 65mm, Steel track: 72mm
 Hydraulic System		 Cab & Electrical System	
Pump	TAIFENG Plunger pump	Cab	Sunroof
Type	Load sensitive		
Max. discharge flow	62 (L/min)		
Max. discharge pressure			
Boom, arm and bucket	21 MPa	Voltage	12V
Travel circuit	12 V	Batteries	1X12V
Swing circuit	12V	Battery capacity	45Ah
Control circuit	12V	Outer diameter, inner diameter, piston rod diameter	

Pilot control pump	4 MPA	Boom cylinder	Φ90xΦ75xΦ40*S455-L785	
Main control valves	21 Mpa	Arm cylinder	Φ85xΦ70xΦ40*S492-L765	
Oil cooler	Air cooled type	Bucket cylinder	Φ75xΦ50xΦ35*S426-L670	
 Swing System		 Refilling Capacity & lubrication		
Swing motor	NACHI PCR-2B-10A-P-8486A	Fuel tank	32L	
Swing motor type	Hydraulic driven gear rotary motor	Cooling system	9L	
Brake	No	Engine oil	3.4-4.4L	
Swing speed	13.5 r/min	Hydraulic oil tank	39.5L	
 Bucket				
Type		Backhoe bucket		
Bucket capacity		0.075m3 (SAE)		
Bucket Capacity scope		0.030-0.1m³		
Number of bucket teeth		4		
Bucket width		460 mm		
Working ranges				
Boom length				2150mm
A	Max. digging height			3865mm
B	Max. dumping height			2760mm
C	Max. digging depth			2560mm
D	Max. vertical digging depth			2440mm
E	Max. digging distance			4375mm
F	Max. digging radius at ground level			4275mm
Digging Force				
Arm length				1388mm

A	Bucket digging force	18.6 KN			
B	Arm digging force	13.5 KN			
Overall Dimensions					
A	Overall length	4050mm	G	Tail swing radius	710mm
B	Overall width	1540mm	H	Track grounding length	1530mm
C	Overall height(to top of boom)	1380mm	I	Track length	1895mm
D	Overall height(to top of cab)	2360mm	J	Track gauge	1510mm
E	Counter weight ground clearance	485mm	K	Track Shoe width	250mm
F	Min. Ground clearance	255mm	L	Revolving frame width	1350mm
<div></div>					
Operating weight includes basic machine					
Operating weight			2870kg		
Ground pressure			26.7 KPa		



SD35U

mini excavator

Product Overview



SHANDING



**3.5 TON
MINI EXCAVATOR**

EXCAVATOR SD35U

SD35U is a car with the highest configuration in the micro-digging industry. The original imported Yangma engine is durable, fuel-efficient and low noise. Disc - type design structure, design science, rigorous, all accessories at a glance.

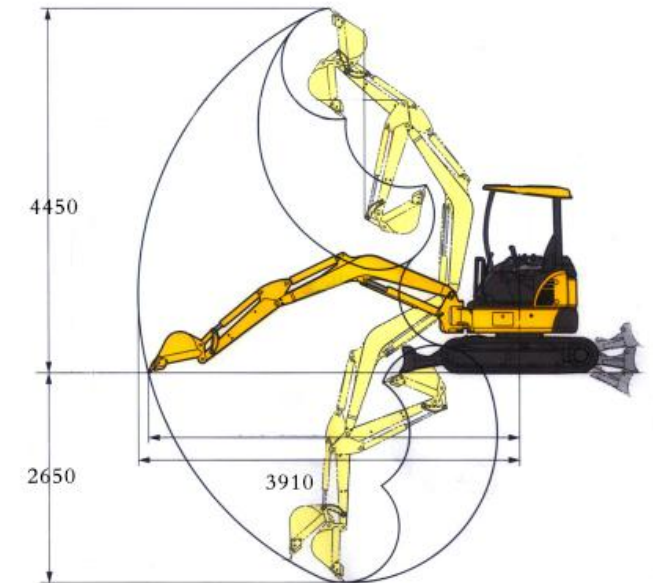
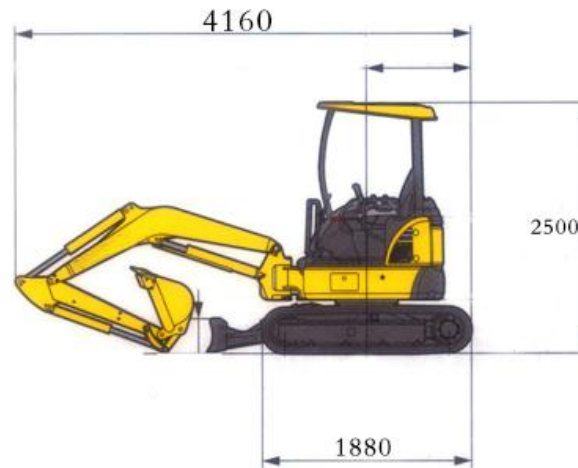
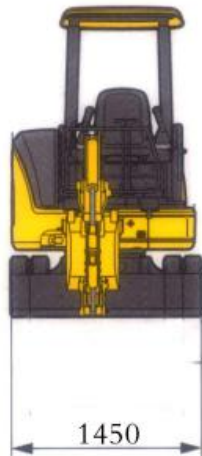
Product Overview



- This SD35u small excavator weighs about 3300kg
- relatively small and flexible
- YANMAR 3TNV88, Engine power 19.6KW
- bucket capacity 0.09 m³



Technical Specifications



1. Overall Width: 1450mm
2. Overall Length: 4160mm
3. Max. Digging Height: 4450mm
4. Max Digging Depth: 2650mm
5. Boom Length: 2150mm
6. Track Length: 1880mm
7. Max Dumping Height: 2750mm
8. Max. Digging Radius: 3910mm

Details Display



New design of appearance
It's made of die-formed covering parts by stamping, with beautiful appearance and high grade.

Tailless rotation, moving arm sideways
Two functions at the same time, in complex environment barrier-free construction



It has the function of moving arm sideways
Barrier-free construction in complex environment

Fully open housing
It is convenient for daily inspection and maintenance in all corners of the interior, making the work faster and more efficient



Details Display



Environmentally friendly engine
Fuel saving, silent, green emission and strong power, meet the T3 emission standard



Enhanced bulldozer to improve efficiency

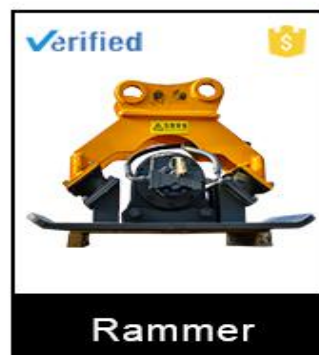
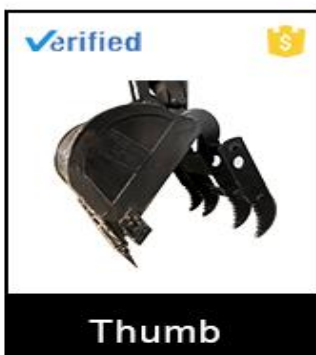
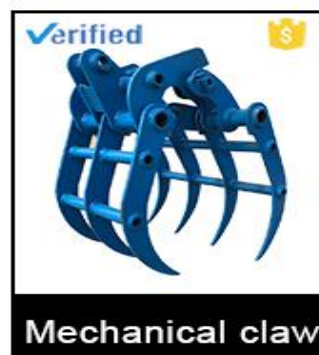
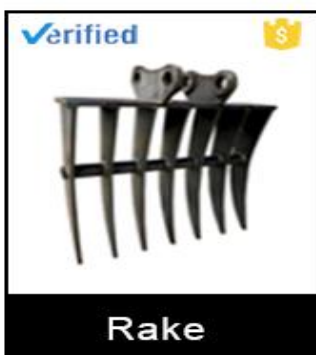


X frame chassis design
Improve the structure dispersion stress, improve the stability and durability of the structure



Can be matched with a variety of front-end furniture, suitable for a variety of different working conditions.

Accessories supply



Technical Specifications



Overall size		Working range	
Minimum radius of Tail gyration	755mm	Max. Digging Height	4450mm
Min Ground Clearance	280mm	Max. Dumping Height	2750mm
Platform Width	1290mm	Max. Digging Depth	2650mm
Engine hood height	1350mm	Max Digging Radius	4500mm
Platform Height Above Ground	550mm	Maximum ground level digging distance	3910mm
Track center distance	1200mm	Minimum radius of Tail gyration	755mm
Bucket Width	530mm	Bulldozer Width	1450mm
Transport Length	4000mm	Bulldozer Height	300mm
Machine parameters		Max Bucket Digging Force	18.8KN
Weight	3300Kg	Machine configure	
Bucket Capacity	0.09m³	Model No	SD35U
Rated Power	19.6KW	Engine Model	YANMAR 3TNV88
Rated Rotary Speed	2400r/min	PUMP	NAGHI-JAPAN
Max. Pressure	21.0[21.5]MPa	MOTOR	NAGHI-JAPAN
Boom Swing Angle	Lift:75°/ Right:50°	Drive Mode	Hydraulic pilot
Max. Grade	30°	Valve	Nablsco-japan
Ground Pressure	27kpa		
Max Walking Speed	4.6/2.8Km/h	As the technology is constantly updated, materials and technical specifications are subject to change without notice.	
Max. Traction	18.8(19.2)KN		
Max Platform Rotation Speed	10rmp		



SD40B

mini excavator

Product Overview



SHANDING

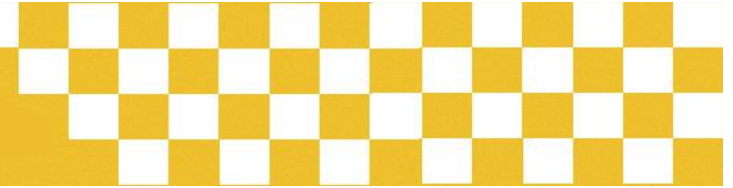


**4 TON
MINI EXCAVATOR**

EXCAVATOR SD40B

SD40B small excavator is a kind of car between 20 series micro excavator and 60 series excavator. Its appearance design is very beautiful. It has stepless variable speed and hydraulic walking, which makes the operation more comfortable。

Product Overview



This SD40B small excavator weighs about 3650kg ➤

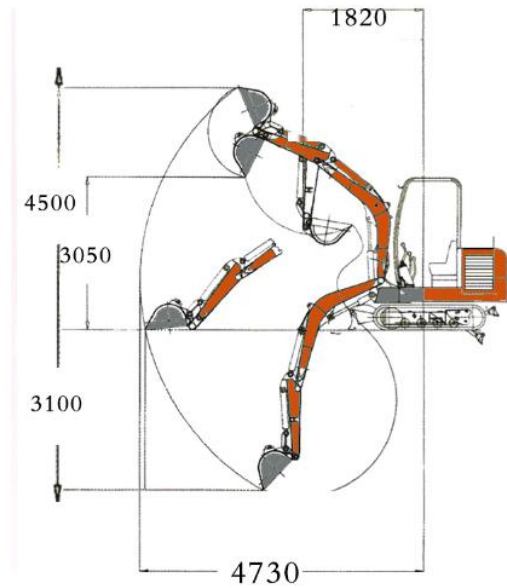
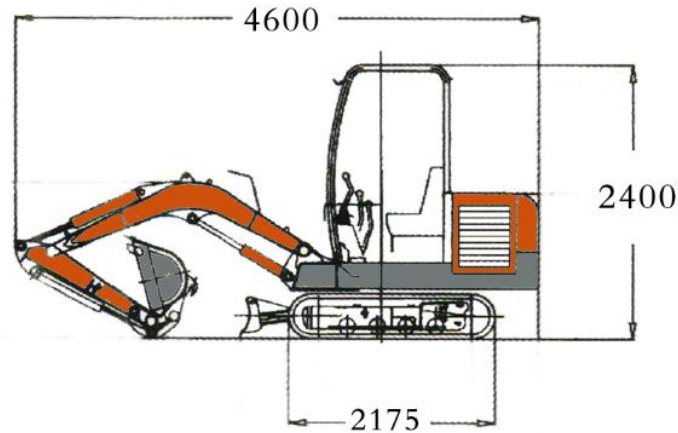
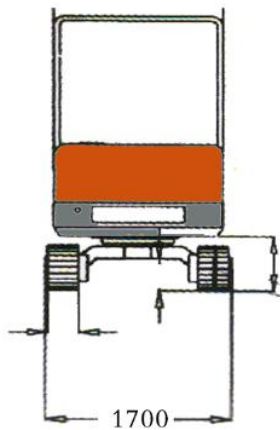
relatively small and flexible ➤

YANMAR 3TNV88, Engine power 34KW ➤

bucket capacity 0.2m³ ➤



Technical Specifications



1. Overall Width: 1700mm
2. Overall Length: 4600mm
3. Max. Digging Height: 4500mm
4. Max Digging Depth: 3100mm
5. Boom Length: 2350mm
6. Track Length: 2175mm
7. Max Dumping Height: 3050mm
8. Max. Digging Radius: 4730mm

Details Display



New design of appearance
It's made of die-formed covering parts by stamping, with beautiful appearance and high grade.

Stepless variable speed, hydraulic walking, more comfortable operation



Enhanced chassis, prolong service life and improve efficiency

Equipped with OLED display, real-time monitoring status



Details Display



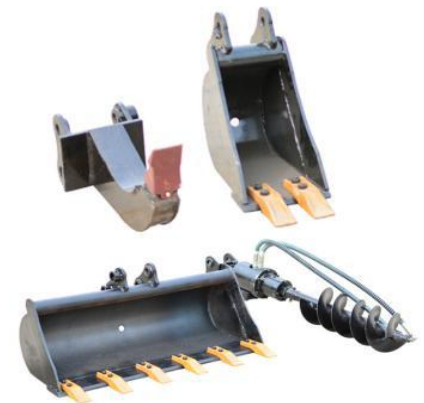
Imported main pump, motor and other hydraulic system, fast action, compound action coordination, reliability, long service life

Enhanced bulldozer to improve efficiency

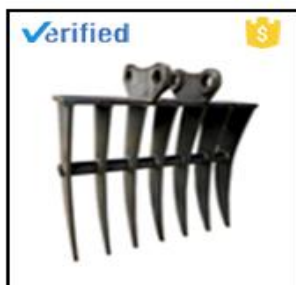


Original hydraulic system, fast working speed, solid durable

Can be matched with a variety of front-end furniture, suitable for a variety of different working conditions.



Accessories supply



Rake



Gripper



Mechanical claw



Ripper



Breaking hammer



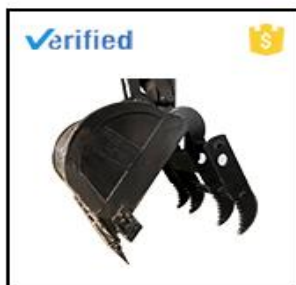
Auger



Buckets



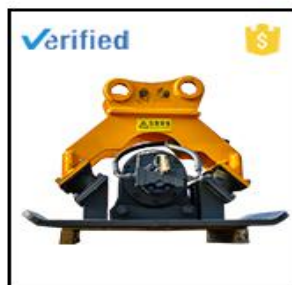
Quick connector



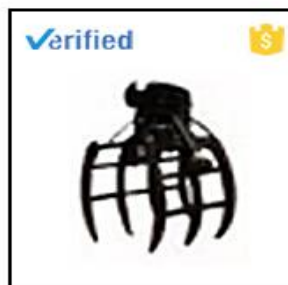
Thumb



Plum paw



Rammer



Hydraulic claw

Technical Specifications



Overall size		Machine parameters	
Overall Length	4600mm	Machine Weight	3650Kg
Overall Width	1700mm	Bucket Capacity	0.2m ³
Overall Height	2400mm	Bucket Width	600mm
Platform turning radius	1170mm	Rated Power	34KW
Track Length	2175mm	Rated Rotary speed of Engine	2400r/min
Track Width	300mm	Hydraulic Pressure	22MPa
Gauge	1620mm	Max Grade	35°
Boom Length	2350mm	Ground Pressure	34.8kpa
Arm Length	1230mm	Max Travel Speed	2.7/4.6Km/h
Min Ground Clearance	260mm	Max Digging Force	26KN
Platform Width	1550mm	Rotary Speed	9-11rpm
Engine hood height	1300mm	Working range	
Platform Height Above Ground	570mm	Max. Digging Height	4500mm
Machine configure		Max. Dumping Height	3050mm
Model No	SD40B	Max. Digging Depth	3100mm
Engine Model	Changchai 490	Max. Sinking Depth of Bulldozer	270mm
Motors	Imported motors	Max Digging Radius	4730mm
Pump	Variable piston pump	Min. Radius of Gyration	1820mm
		Max. Lifting Height of Bulldozer	350mm



SD40U

mini excavator

Product Overview



EXCAVATOR SD40U

SD40U is a car with the highest configuration in the micro-digging industry. The original imported Yangma engine is durable, fuel-efficient and low noise. Disc - type design structure, design science, rigorous, all accessories at a glance.

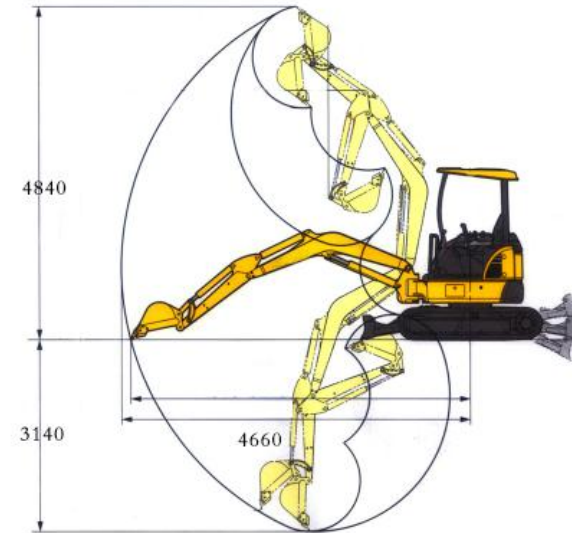
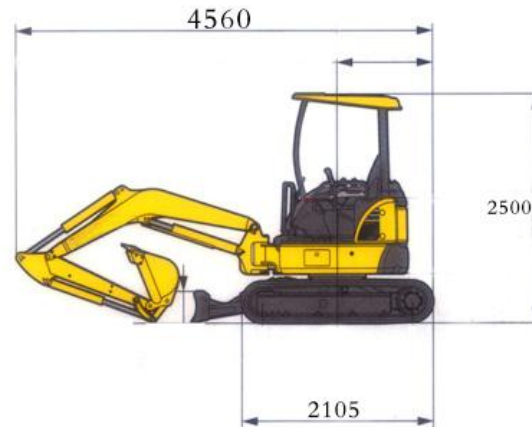
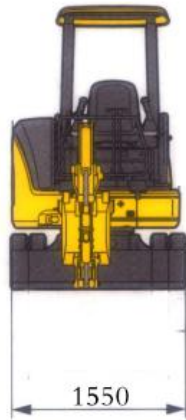
Product Overview



- This SD40u small excavator weighs about 3650kg
- relatively small and flexible
- YANMAR 3TNV88, Engine power 19.6KW
- bucket capacity 0.1 m³



Technical Specifications



1. Overall Width: 1550mm
2. Overall Length: 4160mm
3. Max. Digging Height: 4450mm
4. Max Digging Depth: 2650mm
5. Boom Length: 2150mm
6. Track Length: 1880mm
7. Max Dumping Height: 2750mm
8. Max. Digging Radius: 3910mm

Details Display



New design of appearance
It's made of die-formed covering parts by stamping, with beautiful appearance and high grade.

Tailless rotation, moving arm sideways
Two functions at the same time, in complex environment barrier-free construction



It has the function of moving arm sideways
Barrier-free construction in complex environment

Fully open housing
It is convenient for daily inspection and maintenance in all corners of the interior, making the work faster and more efficient



Details Display



Environmentally friendly engine
Fuel saving, silent, green emission and strong power, meet the T3 emission standard

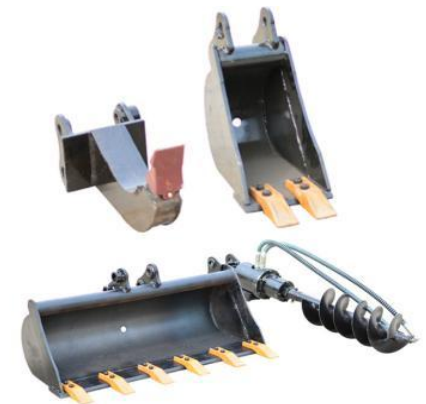


Enhanced bulldozer to improve efficiency

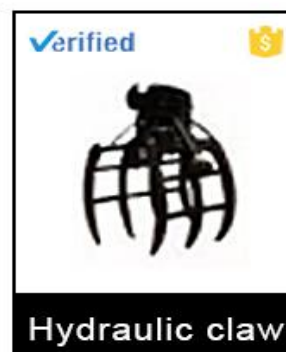
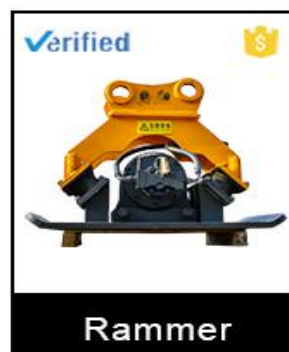
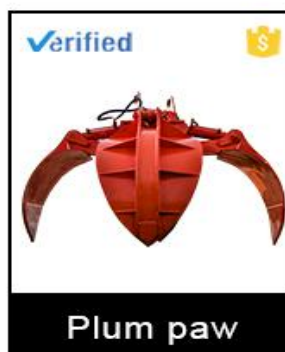
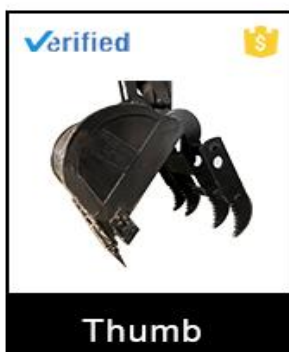
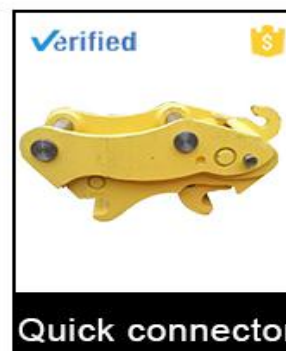
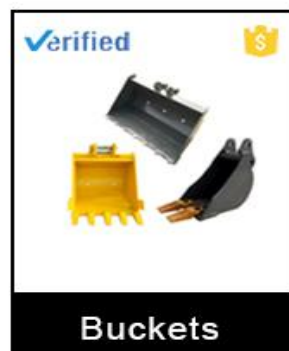
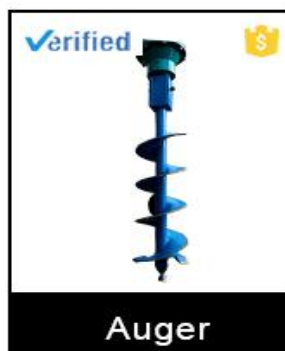
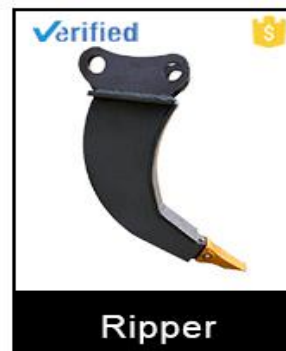
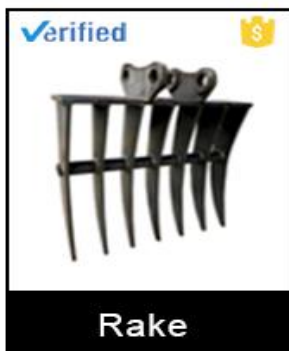


X frame chassis design
Improve the structure dispersion stress, improve the stability and durability of the structure

Can be matched with a variety of front-end furniture, suitable for a variety of different working conditions.



Accessories supply



Technical Specifications



Overall size		Machine parameters	
Minimum radius of Tail gyration	775mm	Machine weight	3650Kg
Track center distance	1250mm	Bucket Capacity	0.1m ³
Bucket Width	550mm	Rated Power	19.6KW
Transport Length	4500mm	Rated Rotary	2400r/min
Min Ground Clearance	290mm	Hydraulic Pressure	21.0(21.5)MPa
Arm Height	2820mm	Max Grade	30°
Chassis Width	1500mm	Ground Pressure	26.7kpa
Engine hood height	1400mm	Max Travel Speed	4.6/2.5Km/h
Platform Height Above Ground	590mm	Max. Traction	20.55(15.6)KN
Working range		Max Platform Rotation Speed	10min
Max. Digging Height	4840mm	Max Digging Power	20.55KN
Max. Dumping Height	3050mm	Machine configure	
Max. Digging Depth	3140mm	Model No	SD40U
Max Digging Radius	5050mm	Engine Model	Yanmar 3TNV88
Maximum ground level digging distance	4660mm	Main Pump	Nachi
Back end radius of gyration	885mm	Motors	NaCHI
Bulldozer Width	1550mm	Drive model	Hydraulic pilot
Bulldozer Height	355mm	Valve	Nabtesco



SD40W-8T

mini excavator

Product Overview



EXCAVATOR SD40W-8T

SD40w-T small excavator is a kind of car between 20 series micro excavator and 60 series excavator. Its appearance design is very beautiful. It has stepless variable speed and hydraulic walking, which makes the operation more comfortable.

Product Overview



This SD40W-8T small excavator weighs about 3680kg ➤

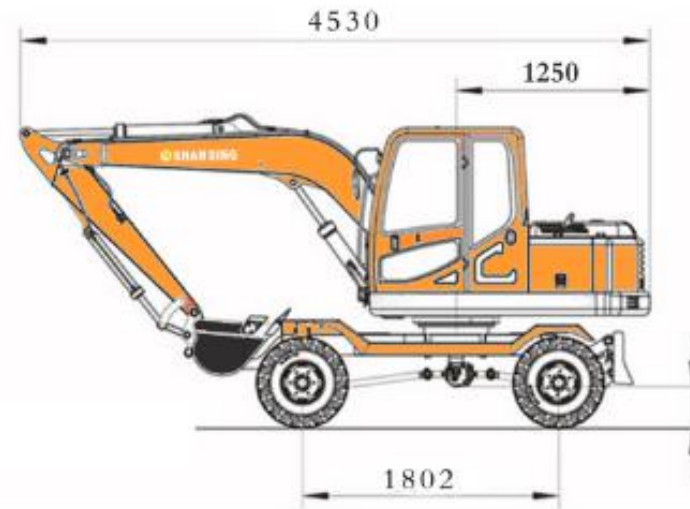
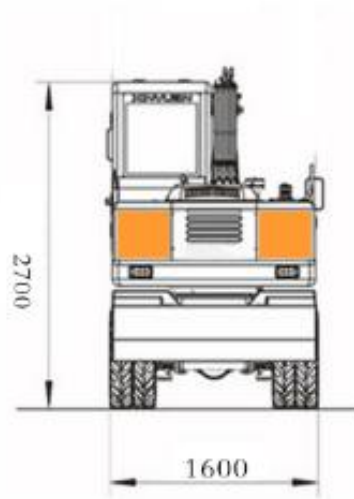
relatively small and flexible ➤

YANMAR 3TNV88, Engine power 34KW ➤

bucket capacity 0.2m³ ➤



Technical Specifications



- | | |
|--------------------------------|--------------------------------|
| 1. Overall Width: 162mm | 5. wheelbase: 1850mm |
| 2. Overall Length: 4530mm | 6. Boom Length: 2350mm |
| 3. Max. Digging Height: 4650mm | 7. Max Dumping Height: 3100mm |
| 4. Max Digging Depth: 3000mm | 8. Max. Digging Radius: 5100mm |

Details Display



New design of appearance
It's made of die-formed covering parts by stamping, with beautiful appearance and high grade.

Stepless variable speed hydraulic walking
comfortable operation

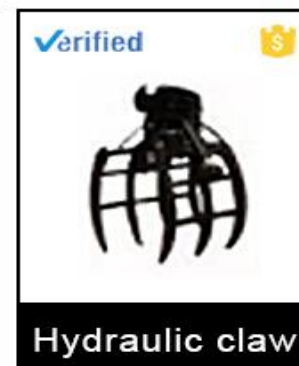
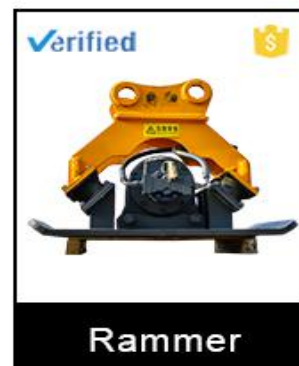
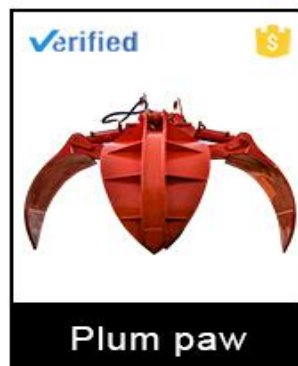
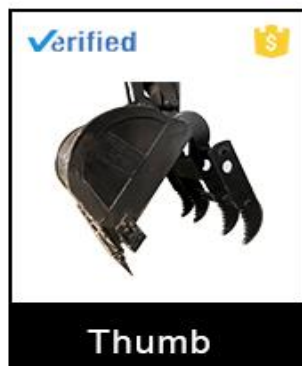
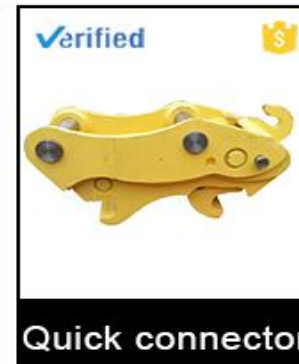
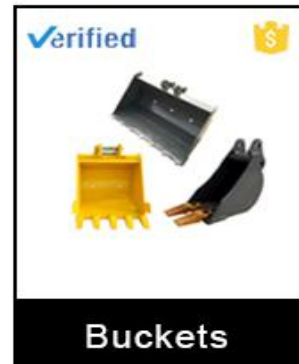
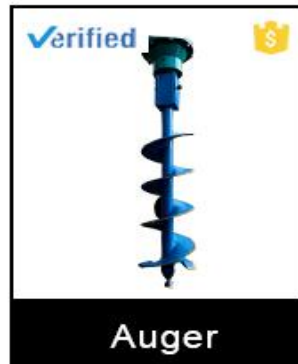
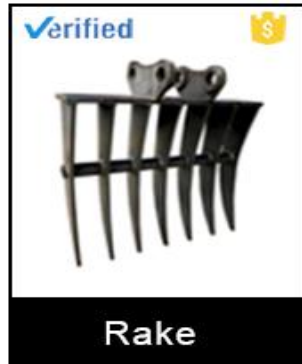


Enhanced chassis, prolong service life and
improve efficiency

Equipped with OLED display, real-time monitoring
status



Accessories supply



Technical Specifications



Working range		Machine parameters	
Max. Digging Height	4650mm	Machine Weight	3680Kg
Max. Dumping Height	3100mm	Bucket Capacity	0.2m ³
Max. Digging Depth	3000mm	Tyre Type	28*9-15
Max Radius of Max Digging Height	5100mm	Rated Power	34KW
Max. Lifting Height of Bulldozer	350mm	Rated Rotation Speed	2400r/min
Max. Sinking Depth of Bulldozer	300mm	Max Hydraulic Pressure	22MPa
Min. Radius of Rear Gyration	1250mm	Max Grade	25°
Machine configure		Max Bucket Digging Force	26Kn
Model No	SD40W-8	Max Travel Speed	25Km/h
Engine Model	Laidong490	Max Traction	28KN
Cooling Method	In-line four-cylinder water-cooled direct injection diesel	Platform rotation speed	9-11rpm
Pump	Variable piston pump	Max Grade	30°
Motors	Imported Motors	Overall size	
As the technology is constantly updated, materials and technical specifications are subject to change without notice.		Arm Length	1250mm
		Bucket Width	600mm
		Engine hood height	1450mm



SD65E

mini excavator

Product Overview



SHANDING



EXCAVATOR SD65E

SD65E small crawler excavator is one of the earliest models studied in our factory. The system is mature and stable, the excavation is powerful and the failure rate is low.

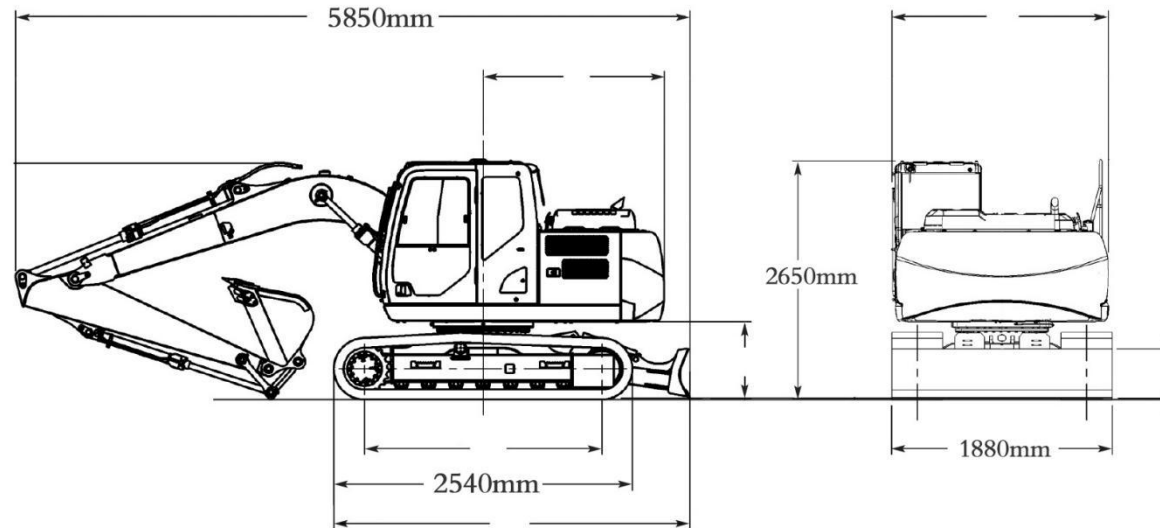
Product Overview



- This SD65E small excavator weighs about 5880kg
- relatively small and flexible
- Yanmar4TNV494, Engine power 37KW
- bucket capacity 0.28m³



Technical Specifications



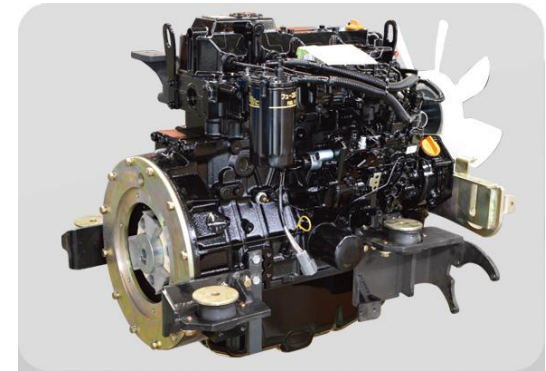
- | | |
|--------------------------------|--------------------------------|
| 1. Overall Width: 1880mm | 5. Boom Length: 3000mm |
| 2. Overall Length: 5850mm | 6. Track Length: 2540mm |
| 3. Max. Digging Height: 5760mm | 7. Max Dumping Height: 4030mm |
| 4. Max Digging Depth: 3820mm | 8. Max. Digging Radius: 6150mm |

Details Display



New design of appearance
It's made of die-formed covering parts by stamping, with beautiful appearance and high grade.

Assembly of environmentally friendly engines
Fuel saving, silent, green emission and strong power of the engine, meet the T3 emission standard



Optimize the reinforced chassis to increase the stability of the lower body

Walking motor, increase I speed torque, lift. High II speed walking speed, greatly improved. Increase productivity.

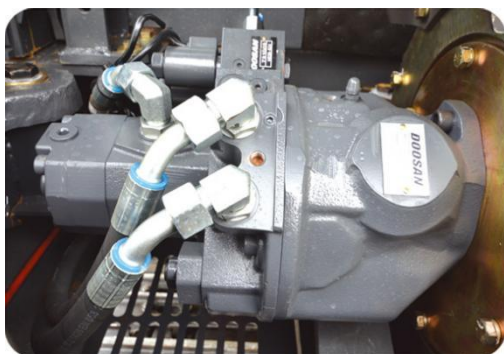


Details Display



Comfortable cab: brand seat, the cab conforms to ergonomics, which can alleviate the fatigue of long-term operation.

Open machine cover, convenient late maintenance and repair

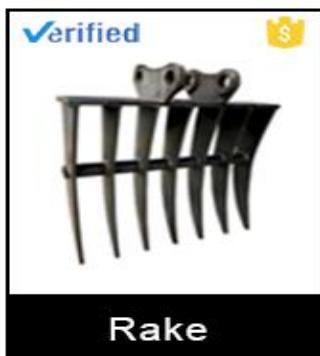


South Korean main pump, large displacement, high power, low fuel consumption, the overall performance and engine power match.

Can be matched with a variety of front-end furniture, suitable for a variety of different working conditions.



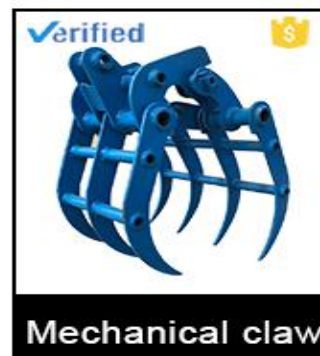
Accessories supply



Rake



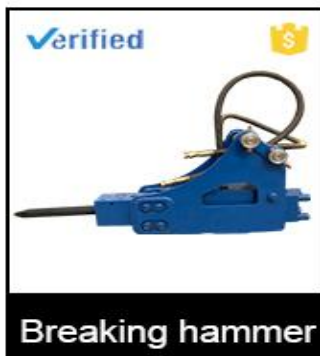
Gripper



Mechanical claw



Ripper



Breaking hammer



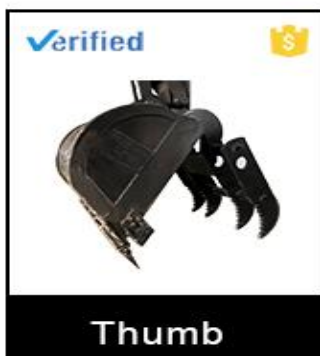
Auger



Buckets



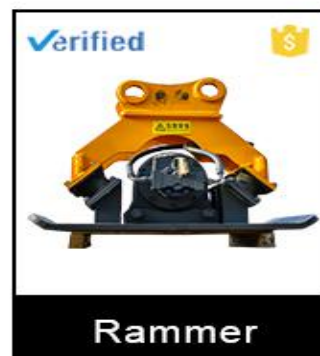
Quick connector



Thumb



Plum paw



Rammer



Hydraulic claw

Technical Specifications



Overall size		Machine parameters	
Min. Radius of Rear Gyration	1650mm	Machine Weight	5880Kg
Min Ground Clearance	350mm	Bucket Capacity	0.28m ³
Platform width	1810mm	Rated Power	37KW
Engine hood height	1750mm	Cylinders	4
Platform Height Above Ground	830mm	Hydraulic Pressure	24MPa
Transport Length	5850mm	Max Grade	30°
Arm Length	1600mm	Ground Pressure	35kpa
Boom Length	3000mm	Max Travel Speed	2.5-4.5Km/h
Bucket Width	670mm	Max Traction	38KN
Working range		Platform rotation speed	8-10rpm
Max. Digging Height	5760mm	Max Bucket Digging Force	37.7KN
Max. Dumping Height	4030mm	Max Arm Digging Force	28.4KN
Max. Digging Depth	3820mm	Machine configure	
Max Digging Radius	6150mm	Model No	SD65E
Min Radius of Rotation	2100mm	Engine Model	Yanmar4TNV494
Max. Lifting Height of Bulldozer	350mm	Pump	Imported MZFB327
Max. Sinking Depth of Bulldozer	450mm	Valve	Parker-Korea
As the technology is constantly updated, materials and technical specifications are subject to change without notice.		Spray method	Direct injection
		Cylinders	4
		Motors	Imported Eaton



SD75W-9T

mini excavator

Product Overview



EXCAVATOR SD75W-9T

SD75W-9T is built by the R&D center of Shanding, which is intelligent, flexible, efficient, safe and reliable. It is in line with the new generation of ergonomic working environment and realizes the multi-functional excavator with one machine.

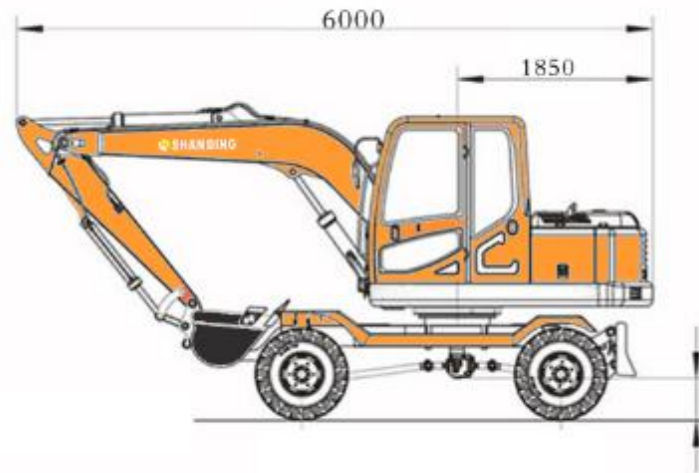
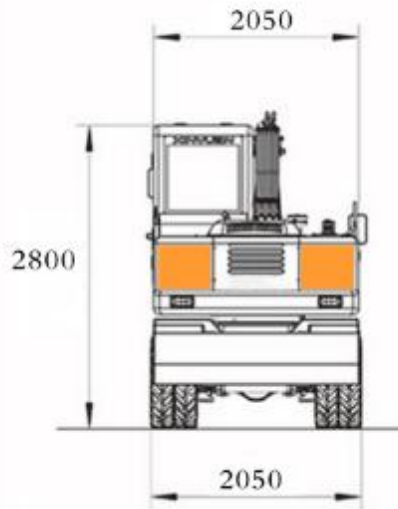
Product Overview



- This SD75W-9T small excavator weighs about 6800kg
- relatively small and flexible
- XINCHAI4D32, Engine power 55KW
- bucket capacity 0.28m³



Technical Specifications



- | | |
|--------------------------------|--------------------------------|
| 1. Overall Width: 2050mm | 5. Tyre type: 750-16 |
| 2. Overall Length: 6000mm | 6. Boom Length: 3250mm |
| 3. Max. Digging Height: 6150mm | 7. Max Dumping Height: 4550mm |
| 4. Max Digging Depth: 3233mm | 8. Max. Digging Radius: 6000mm |

Details Display



The original imported international famous brand hydraulic parts, small power loss, fast action, good coordination of composite action, high efficiency and energy saving, high reliability, long service life.

New cab, new interior design, wide vision, spacious and bright, humanized front shift mechanism, equipped with high-grade adjustable suspension seat, silicone oil shock absorption, superior driving environment



Advanced turbocharged exhaust engine has sufficient power reserve, which can maximize the power of the starting engine, achieve perfect match and reduce power loss

Balance cylinder

Adopt full hydraulic balance oil cylinder, which can be closed by one key and opened by one key. It can not only play a good role in shock absorption, but also better balance the body.



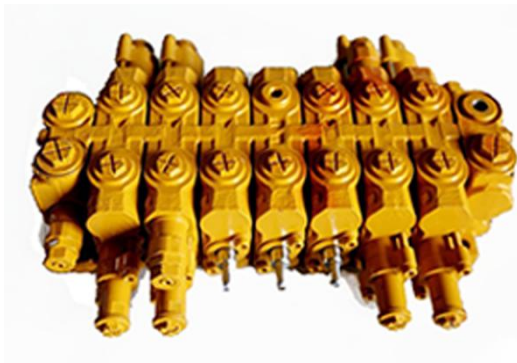
Details Display



Electrical System:

Equipped with color liquid crystal display, with self-checking, monitoring, emergency failure alarm, human-machine interaction is good and high. The configured electrical control software has higher reliability.

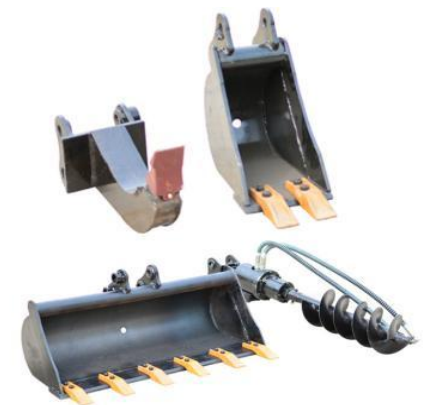
Environmentally friendly National III engine
The use of advanced turbocharged exhaust engine power reserve is sufficient to maximize the power of the engine, achieve a perfect match, and reduce power loss.



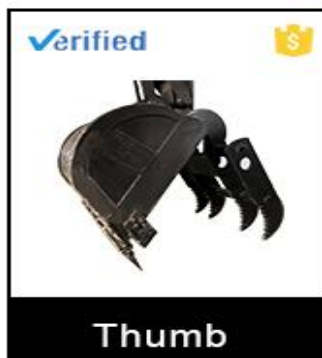
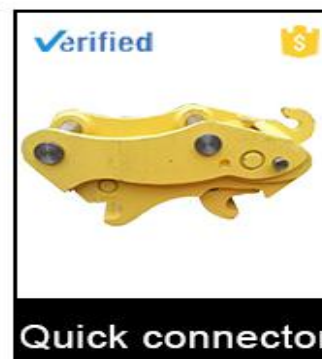
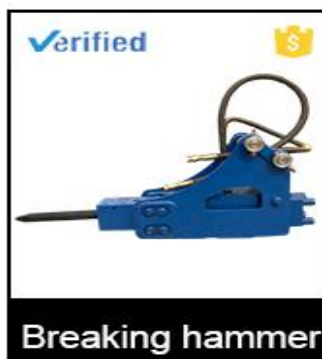
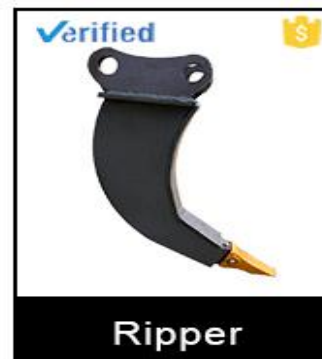
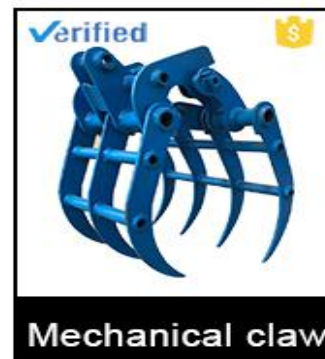
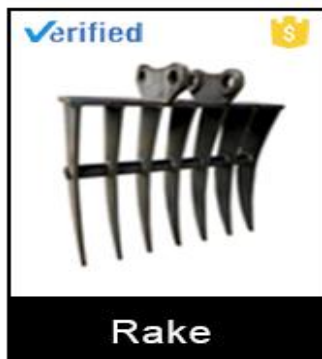
Hydraulic System

American Parker valve; South Korea's advanced precision rotary system; low power loss, fast action, good coordination of compound action, high efficiency and energy saving, high reliability and long service life.

Can be matched with a variety of front-end furniture, suitable for a variety of different working conditions.



Accessories supply



Technical Specifications



Overall size		Machine parameters	
Min Ground Clearance	270mm	Machine Weight	6800Kg
Platform width	2030mm	Bucket Capacity	0.28m ³
Engine hood height	1760mm	Rated Power	55KW
Platform Height Above Ground	1030mm	RATED ROTATION SPEED	2500r/min
Arm Length	1750mm	Hydraulic Pressure	22MPa
Boom Length	3250mm	Max Grade	30°
Bulldozer Width	2024mm	Ground Pressure	32.7kpa
Bulldozer Height	440mm	Max Travel Speed	35Km/h
Working range		Max Traction	39KN
Max. Digging Height	6150mm	Platform rotation speed	10rmp
Max. Dumping Height	4550mm	Machine configure	
Max. Digging Depth	3233mm	Model No	SD75W-9T
Min Radius of Rotation	2280mm	Engine Model	XINCHAI4D32
Max Digging Distance of Ground Level	6000mm	Pump	Shimadzu double gear pump
Front end radius of gyration	2250mm	Motors	SUNJIN
		Valve	Imported Parker



SD80W_{-9T}

mini excavator

Product Overview



EXCAVATOR SD80W-9T

SD80W-9T is built by the R&D center of Shandong, which is intelligent, flexible, efficient, safe and reliable. It is in line with the new generation of ergonomic working environment and realizes the multi-functional excavator with one machine.

Product Overview



This SD35u small excavator weighs about 6850kg ➤

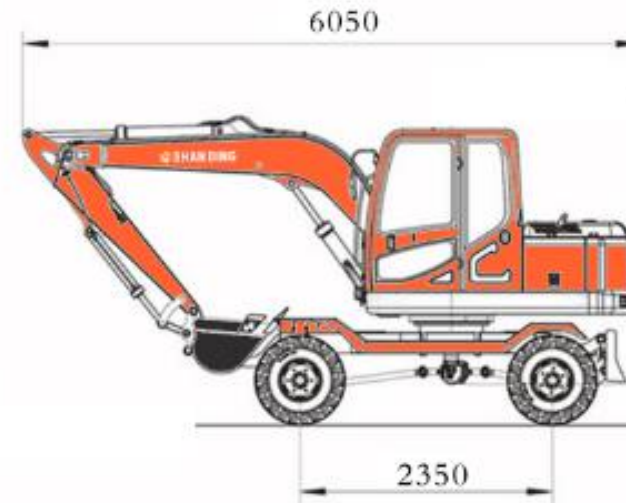
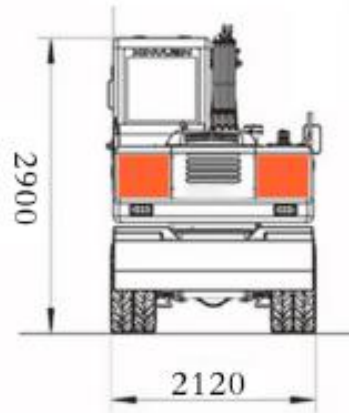
relatively small and flexible ➤

YUCHAI-YC4DK65-T303, Engine power 48KW ➤

bucket capacity 0.3m³ ➤



Technical Specifications



- | | |
|--------------------------------|--------------------------------|
| 1. Overall Width: 2120mm | 5. Max Grade: 30° |
| 2. Overall Length: 6050mm | 6. Boom Length: 3400mm |
| 3. Max. Digging Height: 6400mm | 7. Max Dumping Height: 4700mm |
| 4. Max Digging Depth: 3350mm | 8. Max. Digging Radius: 6190mm |

Details Display



The original imported international famous brand hydraulic parts, small power loss, fast action, good coordination of composite action, high efficiency and energy saving, high reliability, long service life.

The whole model is novel and beautiful, flip the cab, easy to maintain, electronically controlled



Advanced turbocharged exhaust engine has sufficient power reserve, which can maximize the power of the starting engine, achieve perfect match and reduce power loss

Balance cylinder
Adopt full hydraulic balance oil cylinder, which can be closed by one key and opened by one key. It can not only play a good role in shock absorption, but also better balance the body.

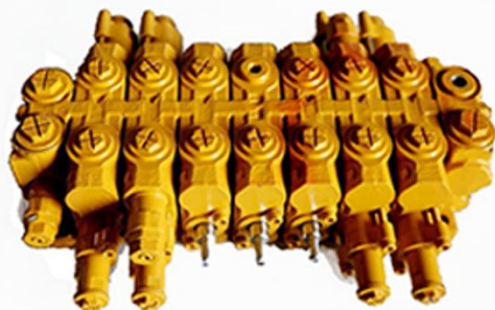


Details Display



Adopt a blower type heat dissipation system to improve the heat dissipation performance and make the machine run more stable and reliable.

Equipped with a supercharged engine of yuchai, an engine that saves fuel, quietness, green emissions and strong power.

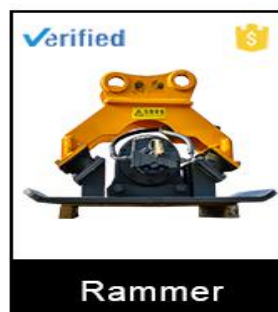
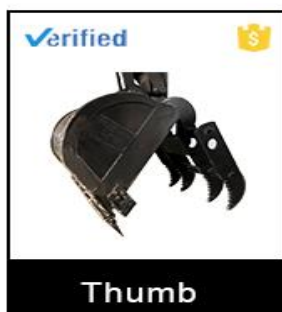
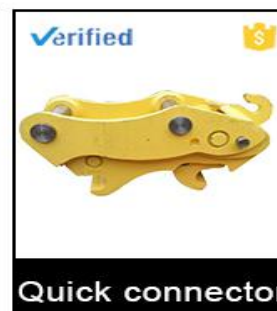
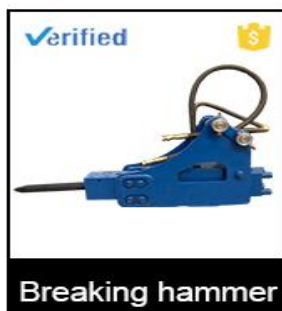
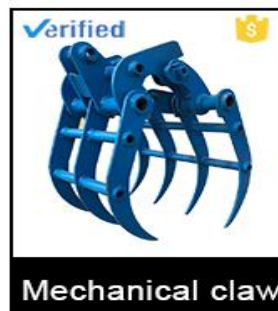
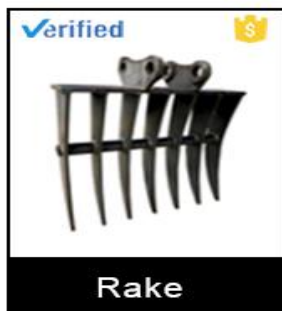


Japan Shimadzu pump, EATON Eaton hydraulic valve, Germany JK system motor

Can be matched with a variety of front-end furniture, suitable for a variety of different working conditions.



Accessories supply



Technical Specifications



Overall size		Working range	
Platform width	2080mm	Max. Digging Height	6400mm
Engine hood height	1800mm	Max. Dumping Height	4700mm
Platform Groud Clearance	1050mm	Max. Digging Depth	3350mm
Wheelbase	2350mm	Max Digging Radius	6480mm
Boom Length	3400mm	Max Digging Distance of Ground Level	6190mm
Arm Length	1900mm	Min radius of gyration	2288mm
Machine parameters		Max. Lifting Height of Bulldozer	290mm
Machine Weight	6850Kg	Max. Sinking Depth of Bulldozer	350mm
Bucket Capacity	0.3m ³	Bucket Width	700mm
Rated Power	48KW	Machine configure	
RATED ROTATION SPEED	2200r/min	Model No	SD80W-9T
Hydraulic Pressure	22MPa	Engine Model	YUCHAI-YC4DK65-T303
Max Grade	30°	Fuel Tank Capacity	110L
Max Digging Force	45KN	Hydraulic Oil Tank Capacity	125L
Ground Pressure	49kpa	Tyre Type	825-16
Max Travel Speed	35Km/h	Pump	Imported Shimadzu Pump
Max Traction	60KN	Valve	Imported Eaton
Platform RotationSpeed	10.2rmp		



SD90W-9T **mini excavator**

Product Overview



EXCAVATOR SD90W-9T

SD90W-9T is built by the R&D center of Shanding, which is intelligent, flexible, efficient, safe and reliable. It is in line with the new generation of ergonomic working environment and realizes the multi-functional excavator with one machine.

Product Overview



This SD90W-9T small excavator weighs about 7400kg ➤

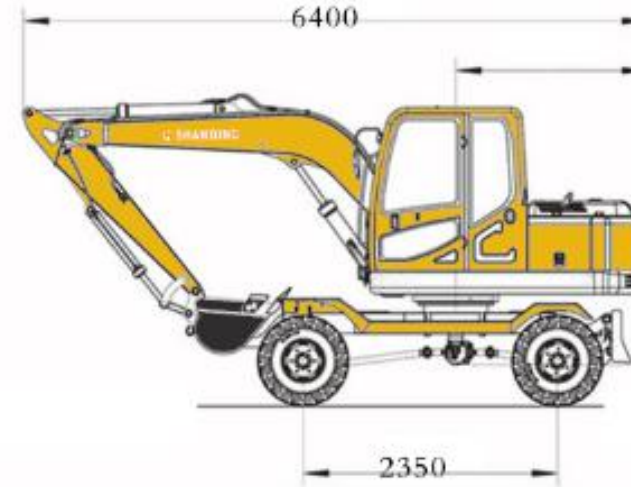
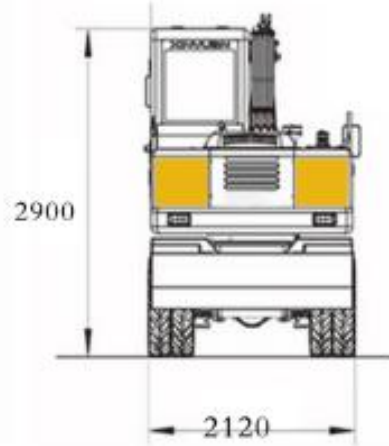
relatively small and flexible ➤

YC4DK65, Engine power 48KW ➤

bucket capacity 0.3m³ ➤



Technical Specifications



- | | |
|--------------------------------|--------------------------------|
| 1. Overall Width: 2120mm | 5. Max Grade: 20° |
| 2. Overall Length: 6400mm | 6. Boom Length: 3500mm |
| 3. Max. Digging Height: 6550mm | 7. Max Dumping Height: 4800mm |
| 4. Max Digging Depth: 3550mm | 8. Max. Digging Radius: 6800mm |

Details Display



The original imported international famous brand hydraulic parts, small power loss, fast action, good coordination of composite action, high efficiency and energy saving, high reliability, long service life.

Luxury cab

The overall sealing design, built-in suspension seat, multi-function steering wheel, optional heating and cooling air conditioning, the operation comfort is very good.



Electrical System

Equipped with color LCD screen, with multiple early warning functions of self-test, monitoring, emergency fault alarm, good human-computer interaction, high configuration electrical control software, higher reliability.

Balance cylinder

Adopt full hydraulic balance oil cylinder, which can be closed by one key and opened by one key. It can not only play a good role in shock absorption, but also better balance the body.



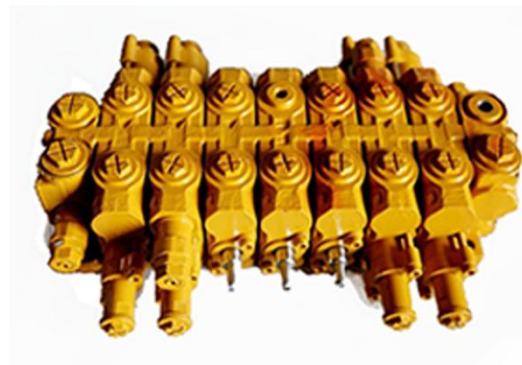
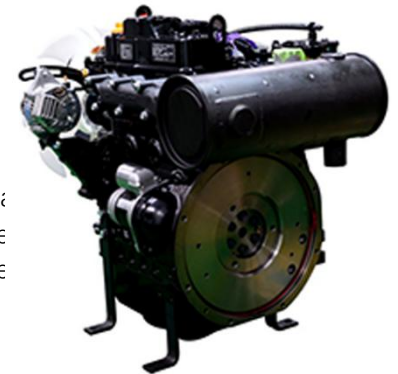
Details Display



Power System

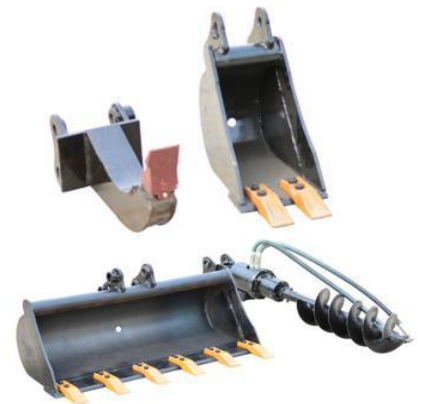
Imported Eaton multi-way valve, Sino-Japan Shimadzu pump, German precision rotary system, fast action, strong power, good coordination of compound action, high reliability and long service life.

Equipped with a supercharged engine of yuchai, an engine that saves fuel, quietness, green emissions and strong power.

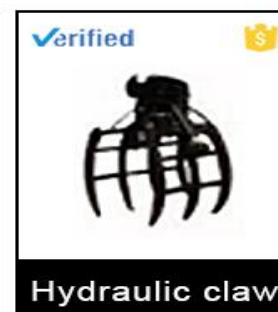
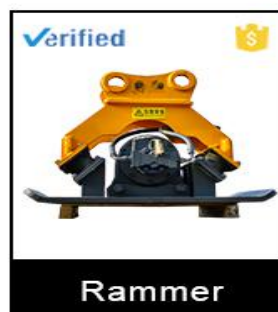
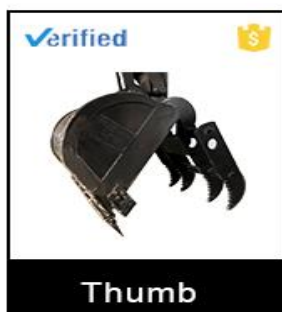
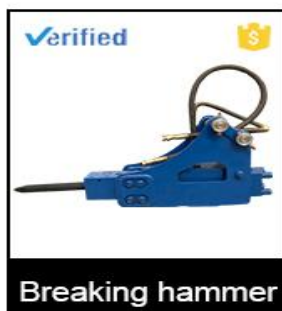
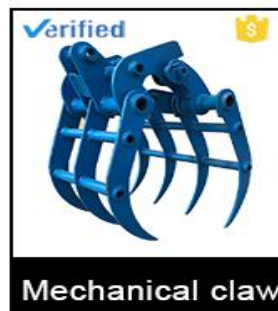
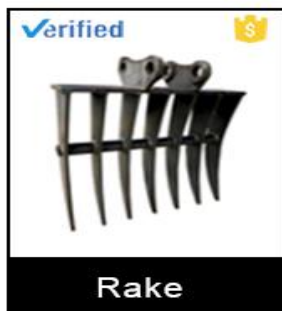


Japan Shimadzu pump, EATON Eaton hydraulic valve, Germany JK system motor

Can be matched with a variety of front-end furniture, suitable for a variety of different working conditions.



Accessories supply



Technical Specifications



Overall size		Machine parameters	
Boom Length	3500mm	Machine Weight	7400Kg
Platform Width	2090mm	Bucket Capacity	0.3m ³
Engine Hood Height	1910mm	Rated Power	48KW
Platform Above Ground	1060mm	Rated Rotation Speed	2200r/min
Wheelbase	2350mm	Max Hydraulic Pressure	22MPa
Arm Length	2000mm	Max Grade	20°
Bucket Width	700mm	Max Ground Pressure	50kpa
Working range		Max Digging Force	45KN
Max Digging Height	6550mm	Max Travel Speed	35Km/h
Max Dumping Height	4800mm	Max Traction	60KN
Max Digging Depth	3550mm	Platform Rotation Speed	11.5rpm
Max Digging Radius	6800mm	Machine configure	
Max Digging Distance Of Ground Level	6390mm	Model No	SD90W-9T
Min Radius of tail gyration	2288mm	Engine Model	YC4DK65
Max. Lifting Height of Bulldozer	300mm	Rotary Motor	Imported Motor
Max. Sinking Depth of Bulldozer	330mm	Hydraulic Oil Tank Capacity	85L
As the technology is constantly updated, materials and technical specifications are subject to change without notice.		Tyre Type	825-16
		Pump	Imported Shimadzu Pump
		Valve	Imported Eaton



SD90E

mini excavator

Product Overview



EXCAVATOR SD90E

SD90E small crawler excavator is one of the earliest models studied in our factory. The system is mature and stable, the excavation is powerful and the failure rate is low.

Product Overview



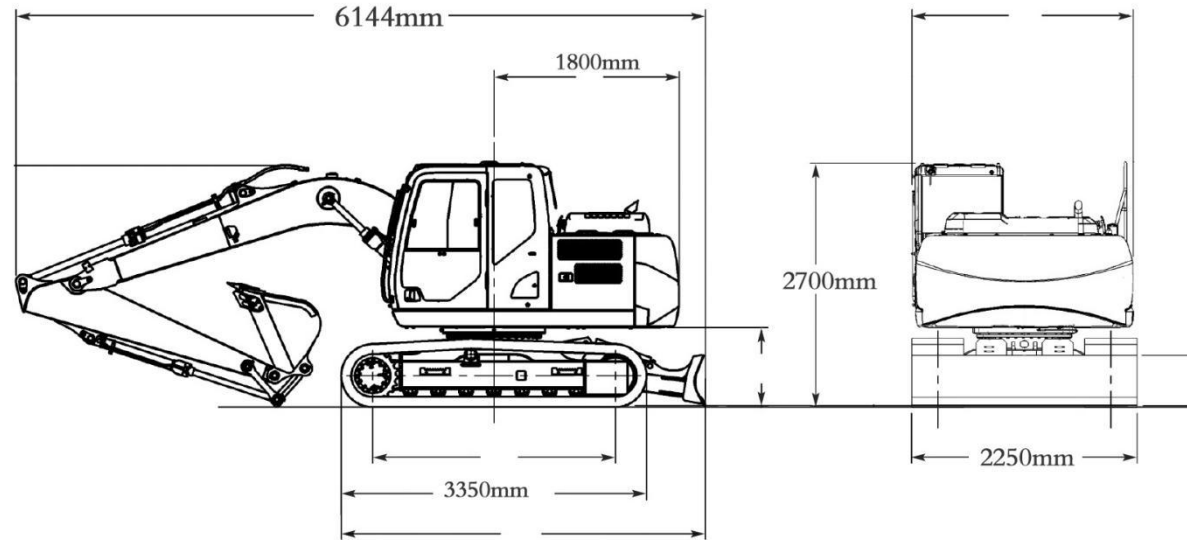
This SD90E small excavator weighs about 8100kg ➤

Yanmar, Engine power 47KW ➤

bucket capacity 0.32m³ ➤



Technical Specifications



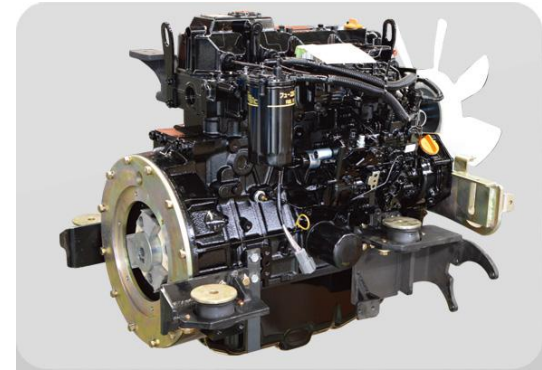
- | | |
|--------------------------------|--------------------------------|
| 1. Overall Width: 2250mm | 5. Boom Length: 3720mm |
| 2. Overall Length: 6144mm | 6. Track Length: 3350mm |
| 3. Max. Digging Height: 7150mm | 7. Max Dumping Height: 5148mm |
| 4. Max Digging Depth: 4200mm | 8. Max. Digging Radius: 6349mm |

Details Display



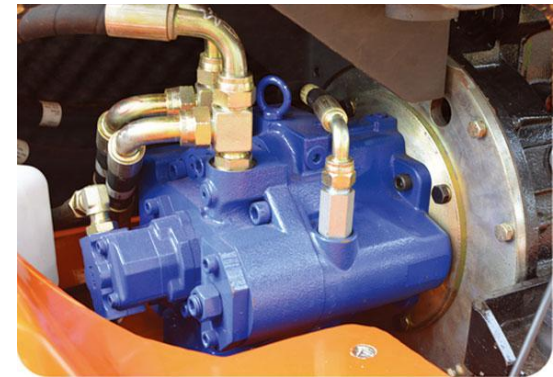
New design of appearance
It's made of die-formed covering parts by stamping, with beautiful appearance and high grade.

Assemble environmentally friendly engine
Fuel-efficient, quiet, green emissions and powerful
engines coexist to meet T3 emission standard



Hydraulic system: Japanese KYB control valve +
American Eaton rotary + high pressure oil pipe.

Silent type main pump, large displacement, low fuel
consumption, working condition demand.



Details Display



The 20-ton class cab is used, which is spacious and has a wide view and convenient operation

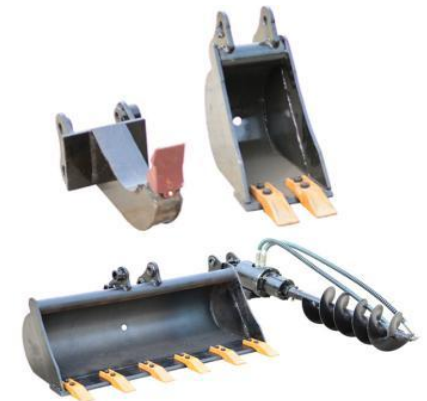


Large and small arms are welded by large excavator to improve the overall strength.

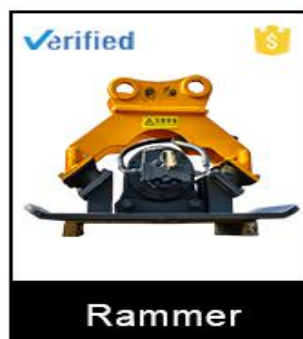
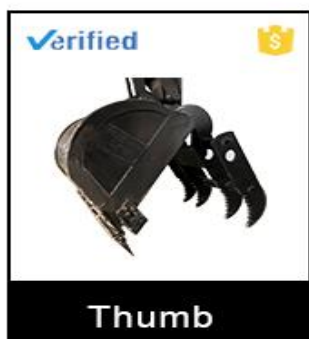
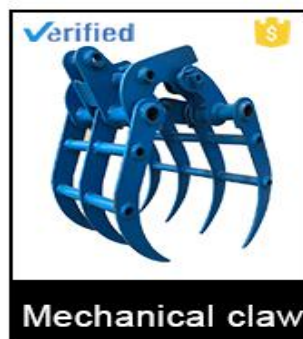
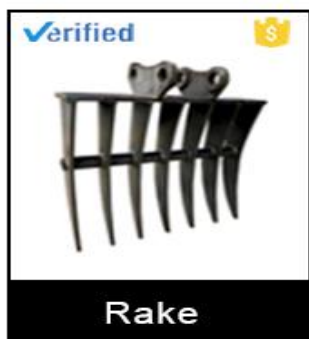


Double-cylinder bulldozer, fast and powerful

Can be matched with a variety of front-end furniture, suitable for a variety of different working conditions.



Accessories supply



Technical Specifications



Overall size		Machine parameters	
Min. Radius of Rear Gyration	1800mm	Machine Weight	8100Kg
Min Ground Clearance	460mm	Bucket Capacity	0.32m ³
Platform Width	2155mm	Rated Power	47KW/2200
Engine hood height	1850mm	Hydraulic Pressure	23MPa
Platform Groud Clearance	820mm	Max Grade	30°
Boom Length	3720mm	Ground Pressure	36kpa
Arm Length	1670mm	Max Walking Speed	2.7/4.3Km/h
Transport Length	6000mm	Max Traction	55KN
Working range		Platform Rotation Speed	10rmp
Max. Digging Height	7150mm	Max Arm Digging Force	38KN
Max. Dumping Height	5148mm	Max Bucket Digging Force	56KN
Max. Digging Depth	4200mm	Machine configure	
Max Digging Radius	6349mm	Model No	SD90E
Max Digging Distance of Ground Level	6240mm	Engine Model	Yanmar
Min radius of gyration	2700mm	Pump	ADP36
Max. Lifting Height of Bulldozer	320mm	Spray method	Direct injection
Max. Sinking Depth of Bulldozer	400mm	Cylinders	4



SD135W

mini excavator

Product Overview



SHANDING



EXCAVATOR SD135W

SD135W is built by the R&D center of Shanding, which is intelligent, flexible, efficient, safe and reliable. It is in line with the new generation of ergonomic working environment and realizes the multi-functional excavator with one machine.

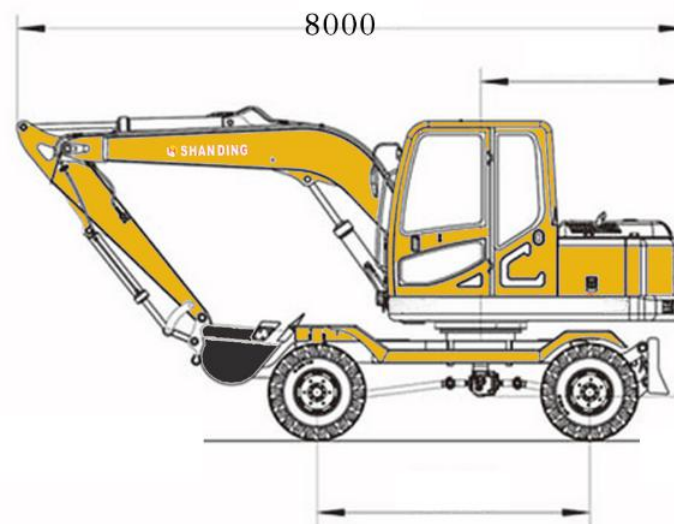
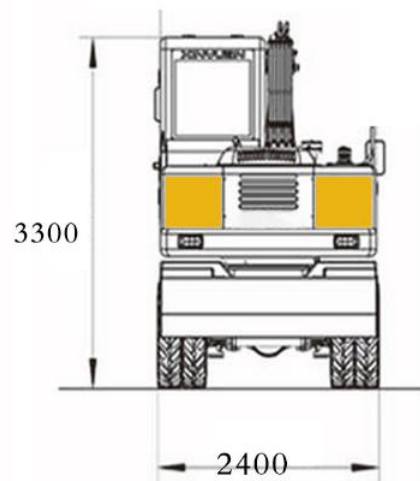
Product Overview



This SD135W small excavator weighs about 7400kg ➤
relatively small and flexible ➤
YC4DK65, Engine power 48KW ➤
bucket capacity 0.3m³ ➤



Technical Specifications



- | | |
|--------------------------------|--------------------------------|
| 1. Overall Width: 2400mm | 5. Tyre type: 9.00-20 |
| 2. Overall Length: 8000mm | 6. Operating weight: 13500kg |
| 3. Max. Digging Height: 8100mm | 7. Max Dumping Height: 4900mm |
| 4. Max Digging Depth: 4900mm | 8. Max. Digging Radius: 9500mm |

Details Display



The original imported international famous brand hydraulic parts, small power loss, fast action, good coordination of composite action, high efficiency and energy saving, high reliability, long service life.

Luxury cab

The overall sealing design, built-in suspension seat, multi-function steering wheel, optional heating and cooling air conditioning, the operation comfort is very good.



Electrical System

Equipped with color LCD screen, with multiple early warning functions of self-test, monitoring, emergency fault alarm, good human-computer interaction, high configuration electrical control software, higher reliability.

Balance cylinder

Adopt full hydraulic balance oil cylinder, which can be closed by one key and opened by one key. It can not only play a good role in shock absorption, but also better balance the body.



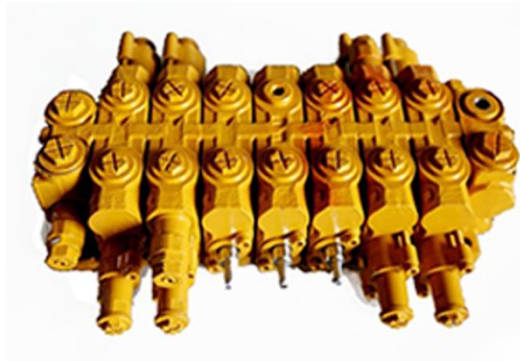
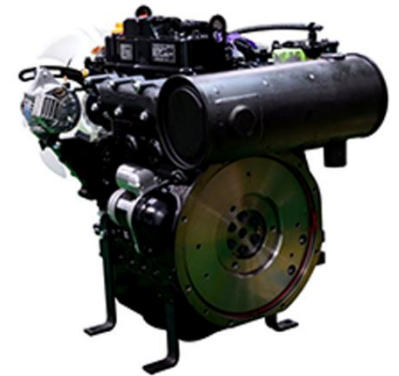
Details Display



Power System

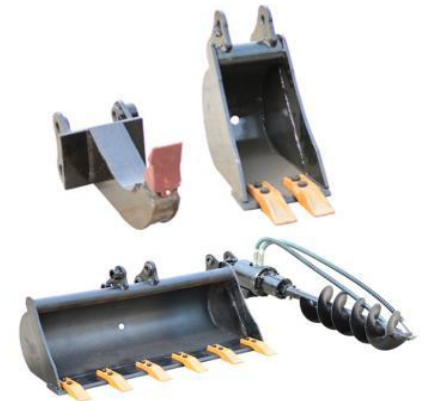
Imported Eaton multi-way valve, Sino-Japan Shimadzu pump, German precision rotary system, fast action, strong power, good coordination of compound action, high reliability and long service life.

Equipped with a supercharged engine of yuchai, an engine that saves fuel, quietness, green emissions and strong power.



Japan Shimadzu pump, EATON Eaton hydraulic valve, Germany JK system motor

Can be matched with a variety of front-end furniture, suitable for a variety of different working conditions.



Accessories supply



Verified



Rake

Verified



Gripper

Verified



Mechanical claw

Verified



Ripper

Verified



Breaking hammer

Verified



Auger

Verified



Buckets

Verified



Quick connector

Verified



Thumb

Verified



Plum paw

Verified



Rammer

Verified



Hydraulic claw

Technical Specifications



Manufacturer	SHANDONG DINGYUAN MACHINERY CO.,LTD
Brand	SHANDING
Model	SD135W
Operating weight	13500kg
Bucket capacity	0.6cbm
Engine	YUCHAI(Turbo)95kw
Rear Swing Radius	2350mm
Max Digging Height	8100mm
Max Digging Distance	9500mm
Max Digging Depth	4900mm
Overall Length	8000mm
Overall Width	2400mm
Overall Height	3300mm
Tyre type	9.00-20
Closed cab	yes
Bucket Width	95mm



SD160W

mini excavator

Product Overview



EXCAVATOR SD160W

SD160W is built by the R&D center of Shandong, which is intelligent, flexible, efficient, safe and reliable. It is in line with the new generation of ergonomic working environment and realizes the multi-functional excavator with one machine.

Product Overview



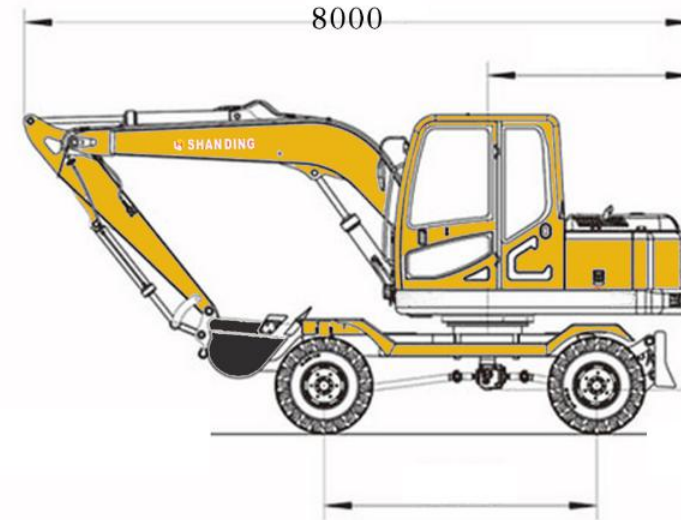
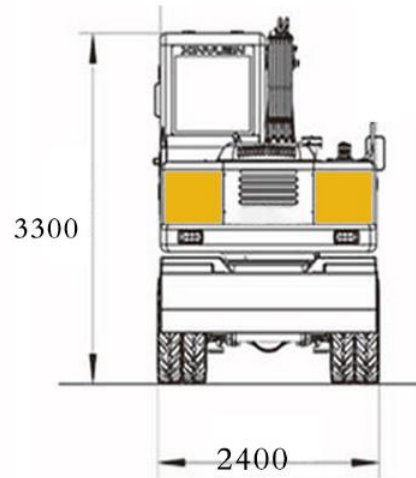
Engineering Tyre 1000-20 ➤

Engine power 93KW ➤

bucket capacity 0.7m³ ➤



Technical Specifications



- | | |
|--------------------------------|--------------------------------|
| 1. Overall Width: 2400mm | 5. Tyre type: 9.00-20 |
| 2. Overall Length: 8000mm | 6. Operating weight: 13500kg |
| 3. Max. Digging Height: 8100mm | 7. Max Dumping Height: 4900mm |
| 4. Max Digging Depth: 4900mm | 8. Max. Digging Radius: 9500mm |

Details Display



SHANDING

ISO CE



The original imported international famous brand hydraulic parts, small power loss, fast action, good coordination of composite action, high efficiency and energy saving, high reliability, long service life.

Luxury cab

The overall sealing design, built-in suspension seat, multi-function steering wheel, optional heating and cooling air conditioning, the operation comfort is very good.



Electrical System

Equipped with color LCD screen, with multiple early warning functions of self-test, monitoring, emergency fault alarm, good human-computer interaction, high configuration electrical control software, higher reliability.

Balance cylinder

Adopt full hydraulic balance oil cylinder, which can be closed by one key and opened by one key. It can not only play a good role in shock absorption, but also better balance the body.



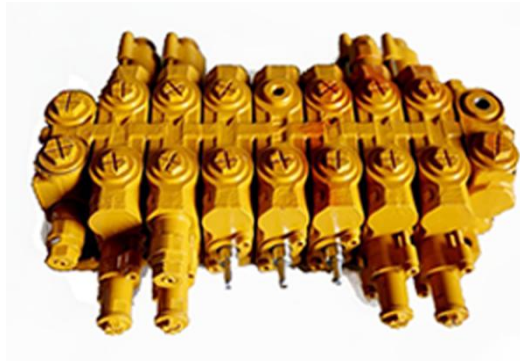
Details Display



Power System

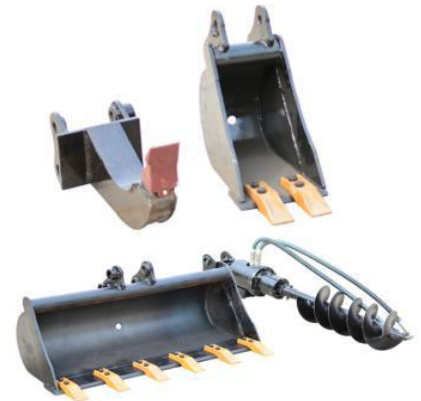
Imported Eaton multi-way valve, Sino-Japan Shimadzu pump, German precision rotary system, fast action, strong power, good coordination of compound action, high reliability and long service life.

Equipped with a supercharged engine of yuchai, an engine that saves fuel, quietness, green emissions and strong power.

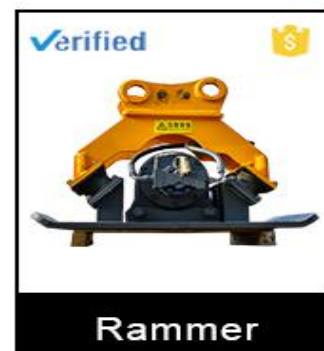
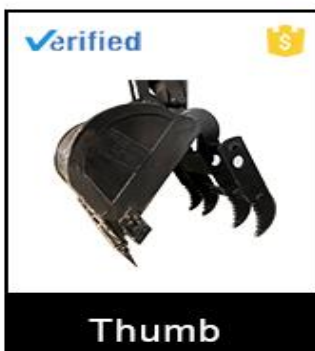
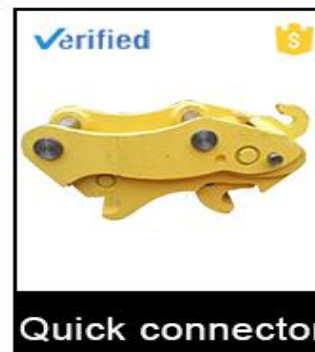
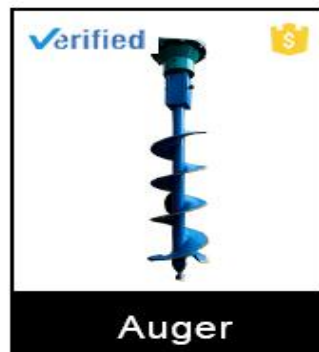
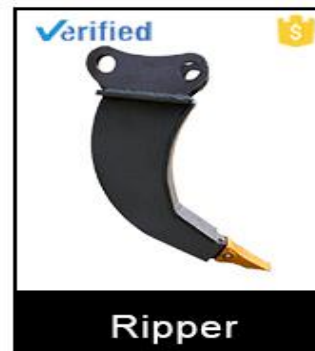
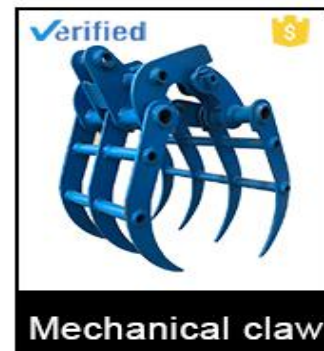
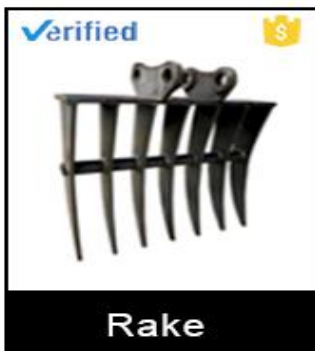
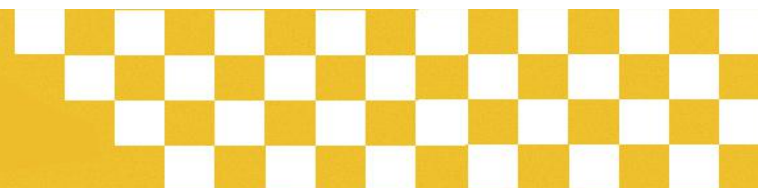


Japan Shimadzu pump, EATON Eaton hydraulic valve, Germany JK system motor

Can be matched with a variety of front-end furniture, suitable for a variety of different working conditions.



Accessories supply



Technical Specifications



Model	SD160W-9T
Tail radius of gyration	2400MM
Wheelbase	2688MM
Bucket Capacity	0.7M3
Max Bucket Digging Force	88KN
Max Arm Digging Force	55KN
Min Counterweight Ground Clearance	1380MM
Max Digging Height	9110MM
Max Digging Radius	8260MM
Main Pump	Kawasaki
Rotary	German precision Rotary
Engine Model	Cumins(TIII)
Rated Power	93KW
Wheel Track	1950MM
Platform Rotation Speed	13-14R/M
Hydraulic system pressure	32MPA
Max Travel Speed	35Km/H
Min Ground Clearance	240MM
Max Dumping Height	6660MM
Max Digging Depth	5050MM
Main Valve	HF
Tyre Type	Engineering Tyre 1000-20



SD235LC

mini excavator

Product Overview



EXCAVATOR SD235LC-9

Widely used in mountain reclamation, earthwork, river dredging, mine and tunnel construction

Product Overview



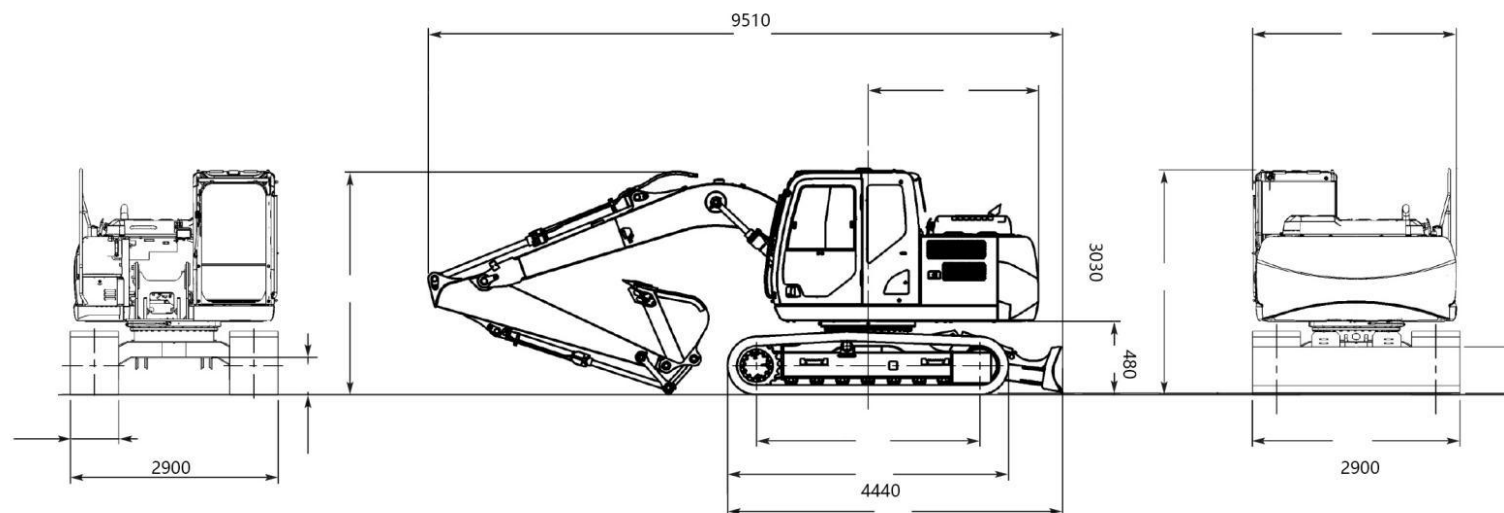
This SD235LC-9 small excavator weighs about 21000kg ➤

relatively small and flexible ➤

Original IUSZU 6BG1, Engine power 128.5kw/2100r/Min ➤

bucket capacity 0.5~1.28M³ ➤





- | | |
|--------------------------------|--------------------------------|
| 1. Overall Width: 2990mm | 5. Boom Length: 2900mm |
| 2. Overall Length: 9510mm | 6. Track Length: 4440mm |
| 3. Max. Digging Height: 9660mm | 7. Max Dumping Height: 6810mm |
| 4. Max Digging Depth: 6630mm | 8. Max. Digging Radius: 9735mm |

Details Display



Reinforced arm design

Improve structure, disperse stress, improve stability and durability of structure

Add cylinder guard plate and bottom protection device ,
pipeline hidden type design.
Prevent scratches and damage in all parts.



Add hydraulic oil radiator and respirator ,
powerful cooling fan , etc
Relieve the high temperature
phenomenon and works continuously

Enhanced car frame (chassis and platform)
Large shelf wider and thicker , several centimeters thicker
than the old model , the whole vehicle is stable and
powerful



Details Display



New design

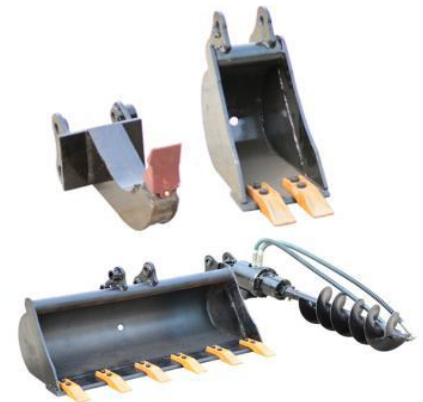
Die cover stamping, beautiful upper grade

Reinforced rubber track durable

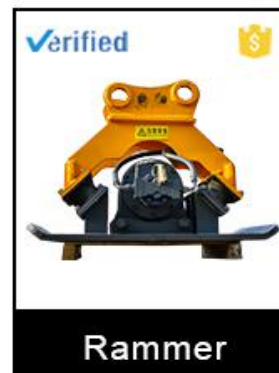
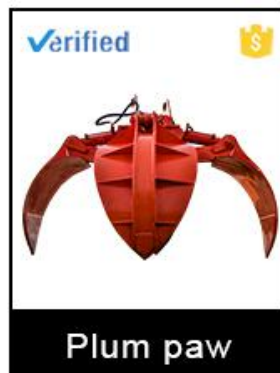
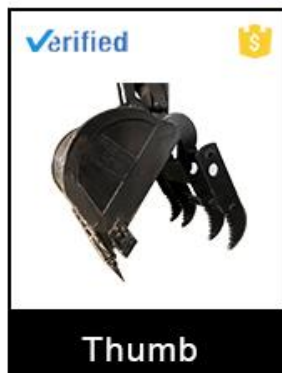
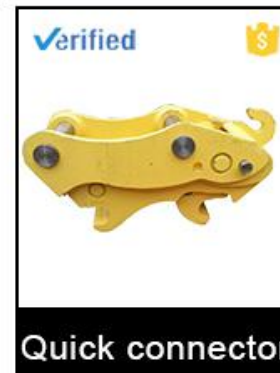
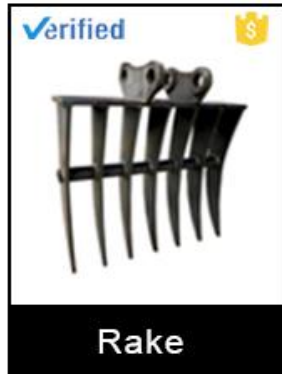


Handle and control list, easy to learn

Can be matched with a variety of front-end furniture, suitable for a variety of different working conditions.



Accessories supply



Technical Specifications



Manufacturer	SHANDONG DINGYUAN MACHINERY CO.,LTD.	Physical Size	
Brand	SHANDING	Overall Size (length*width*height)	9510x2990x3030 mm
Model	SD235LC	Track length*width	4440mm*2990mm
Operating weight	21000kg	Ground contact length of track	3645mm
Engine Model	Original IUSZU 6BG1(JAPAN ORIGINAL)	Height of Cabin	3000mm
Rated Power	128.5kw/2100r/Min	Radius of Turn at the back end	2750mm
Output power	47.4kw	Minimum ground distance	480 mm
Cylinder	Six cylinder, Water cooling,Direct injection	Arm Length	2900mm
Pump	Imported from Korea,Variable axial piston pump	Gauge of tracks	2390mm
Valve	KYB (JAPAN)	Working Range	
Travel motor	TM40VD (KOREA)	Max. Vertical Digging Depth	9660MM
Rotary motor	KAWASAKI (korea)	Max.digging depth	6630 mm
Max Travel speed(H/L)	4.5-3.1km/h	Max.digging height	9660 mm
Air Condation(A/C)	With	Max.digging radius	9735 mm
Radio	With	Max.dumping height	6810mm
Track type	Steel Track	Max digging radius of stop surface	9735mm
Closed cab	Yes	OPTIONAL ATTACHMENTS	
Max Swing Speed	12.4R/Min	BREAKING HAMMER	optional
Max Bucket digging force	136.2/144.1kn	QUICK HITECT	optional
Max Arm digging force	97/102.9kn	Rotary Rigger	optional