



CROSS-COUNTRY FORKLIFT

SD-T30A

PRODUCT ADVANTAGES

- +Articulated steering
- +Steel tyre
- +Wheel deceleration and heavy cast steel bridge
- +Engineering version luxury cab



MORE RELIABLE FORKLIFT

BETTER MATERIAL

Made of manganese steel, not easy to deform or break

STRONGER MOTIVATION

Four-wheel drive means a substantial increase in handling efficiency

ENERGY-SAVING AND FUEL-SAVING

Compared with other forklifts, the average fuel consumption is lower



LUXURY CAB

Fully tempered glass on all sides, wide field of vision, sport suspension seat, no fatigue at work

LED LIGHTING

Equipotential matrix arrangement, increase light concentration and brightness

BRAND ENGINE

Stronger power and stable performance

BOLD CHAIN

Upgraded lifting force, not easy to break, strong bearing capacity

EXCELLENT MATERIAL

One-piece molding, forged forks, long service life, not easy to deform/break

ANTI-SKID TIRES

Guizhou Qianjin brand steel wire tires, four-layer steel wire wrap, anti-wear and puncture-proof

HYDRAULIC SYSTEM

Imported hydraulic system, fast working speed, durable





T30A			
Model	T30A	Rated power	40kw
Dimensions	4100*1800*2730	Climbing angle	< 38°
Engine model	490Supercharge	Lifting height	3000-6000mm
Fork length	1220mm	Door frame ground clearance	250-350mm
Lifting weight	3000kg	Drive method	four-wheel drive
Turning radius	3500mm	Gearbox	265Double high and low speed
Door frame	Articulation thickness35mm	Axle	Small wheel side weighted cast steel bridge
Tires	Engineering steel wire tire 20.5//70-16	Vehicle weight	3900kg



Imported hydraulic system, fast working speed, durable.



Guizhou Qianjin brand steel wire tires, four-layer steel wire wrap, anti-wear and puncture-proof.



One-piece molding, forged forks, long service life, not easy to deform/break.



Fully tempered glass on all sides, wide field of vision, sport suspension seat, no fatigue at work.



WOOD GRAPPLE



BUCKET



VERTICAL BOOM



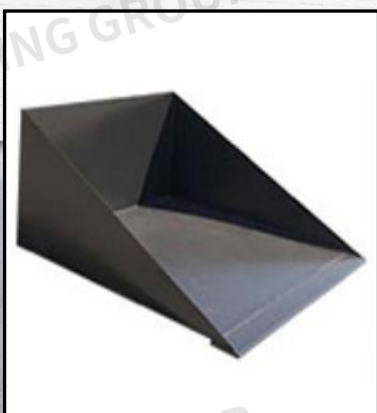
ELECTOR



CLIP



ROUND CLIP



FLAT BUCKET



DOWNTILT

DO MORE JOBS VERSATILE ATTACHMENTS

Compared with other working conditions, it can be equipped with multi-functional attachments, and Shanding forklifts can meet all your application requirements.



CROSS-COUNTRY FORKLIFT

SD-T30B

PRODUCT ADVANTAGES

- +Articulated steering
- +Steel tyre
- +Wheel deceleration and heavy cast steel bridge
- +Engineering version luxury cab



MORE RELIABLE FORKLIFT



BETTER MATERIAL

Made of manganese steel, not easy to deform or break



STRONGER MOTIVATION

Four-wheel drive means a substantial increase in handling efficiency



ENERGY-SAVING AND FUEL-SAVING

Compared with other forklifts, the average fuel consumption is lower

LUXURY CAB

Fully tempered glass on all sides, wide field of vision, sport suspension seat, no fatigue at work

BOLD CHAIN

Upgraded lifting force, not easy to break, strong bearing capacity

BRAND ENGINE

Stronger power and stable performance

HYDRAULIC SYSTEM

Imported hydraulic system, fast working speed, durable

ANTI-SKID TIRES

Guizhou Qianjin brand steel wire tires, four-layer steel wire wrap, anti-wear and puncture-proof

EXCELLENT MATERIAL

One-piece molding, forged forks, long service life, not easy to deform/break

LED LIGHTING

Equipotential matrix arrangement, increase light concentration and brightness





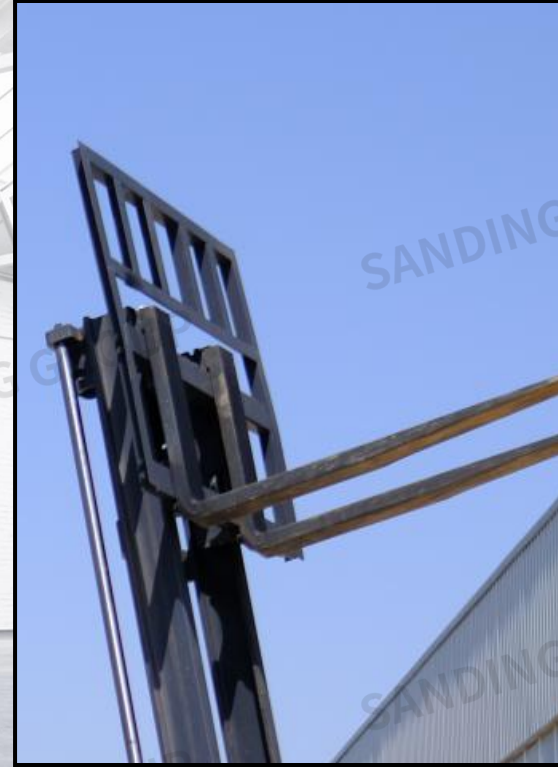
T30B			
Model	T30B	Rated power	42kw
Dimensions	4100*1800*2730	Climbing angle	< 38°
Engine model	490Supercharge	Lifting height	3000-6000mm
Fork length	1220mm	Door frame ground clearance	250-350mm
Lifting weight	3500kg	Drive method	four-wheel drive
Turning radius	3500mm	Gearbox	265Double high and low speed
Door frame	Articulation thickness35mm	Axle	Small wheel side weighted cast steel bridge
Tires	Engineering steel wire tire 20.5//70-16	Vehicle weight	3900kg



Imported hydraulic system, fast working speed, durable.



Guizhou Qianjin brand steel wire tires, four-layer steel wire wrap, anti-wear and puncture-proof.



One-piece molding, forged forks, long service life, not easy to deform/break.



Fully tempered glass on all sides, wide field of vision, sport suspension seat, no fatigue at work.



WOOD GRAPPLE



BUCKET



VERTICAL BOOM



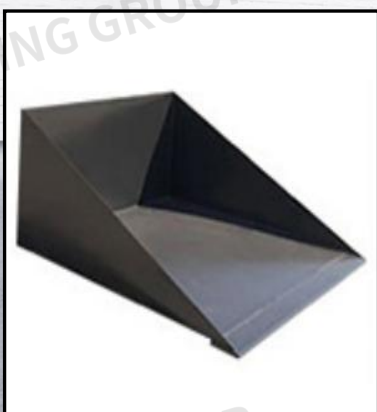
ELECTOR



CLIP



ROUND CLIP



FLAT BUCKET



DOWNTILT

DO MORE JOBS VERSATILE ATTACHMENTS

Compared with other working conditions, it can be equipped with multi-functional attachments, and Shanding forklifts can meet all your application requirements.



CROSS-COUNTRY FORKLIFT
SD-T35B

PRODUCT ADVANTAGES

- +Articulated steering
- +Steel tyre
- +Wheel deceleration and heavy cast steel bridge
- +Engineering version luxury cab



MORE RELIABLE FORKLIFT



BETTER MATERIAL

Made of manganese steel, not easy to deform or break



STRONGER MOTIVATION

Four-wheel drive means a substantial increase in handling efficiency



ENERGY-SAVING AND FUEL-SAVING

Compared with other forklifts, the average fuel consumption is lower

LUXURY CAB

Fully tempered glass on all sides, wide field of vision, sport suspension seat, no fatigue at work

BRAND ENGINE

Stronger power and stable performance

ANTI-SKID TIRES

Guizhou Qianjin brand steel wire tires, four-layer steel wire wrap, anti-wear and puncture-proof

LED LIGHTING

Equipotential matrix arrangement, increase light concentration and brightness

BOLD CHAIN

Upgraded lifting force, not easy to break, strong bearing capacity

HYDRAULIC SYSTEM

Imported hydraulic system, fast working speed, durable

EXCELLENT MATERIAL

One-piece molding, forged forks, long service life, not easy to deform/break





T35B			
Model	T35B	Machine weight	4200KG
Dimensions	4100*1800*2700	Engine power	55.2kW
Engine model	490 pressurization	Climbing angle	≤38°
Fork length	1220mm	Rated lifting height	3000-600MM
Lifting weight	3500kg	Ground clearance of front end of gantry	250-350MM
Turning radius	3500mm	Driving mode	Four wheel drive
Axle	Small wheel side reinforced cast steel bridge	Transmission case	265 double high and low speed
Tires	Forward wire 20.5//70-16	Frame	Hinge thickness 35mm



Imported hydraulic system, fast working speed, durable.



Guizhou Qianjin brand steel wire tires, four-layer steel wire wrap, anti-wear and puncture-proof.



One-piece molding, forged forks, long service life, not easy to deform/break.



Fully tempered glass on all sides, wide field of vision, sport suspension seat, no fatigue at work.



WOOD GRAPPLE



BUCKET



VERTICAL BOOM



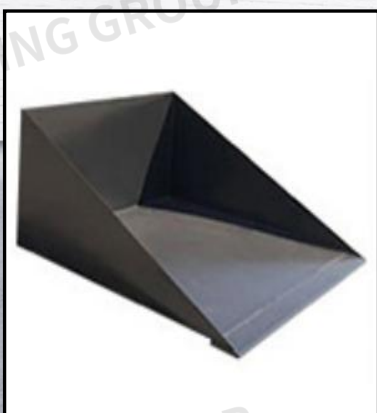
ELECTOR



CLIP



ROUND CLIP



FLAT BUCKET



DOWNTILT

DO MORE JOBS VERSATILE ATTACHMENTS

Compared with other working conditions, it can be equipped with multi-functional attachments, and Shanding forklifts can meet all your application requirements.



CROSS-COUNTRY FORKLIFT

SD-T40B

PRODUCT ADVANTAGES

- +Articulated steering
- +Steel tyre
- +Wheel deceleration and heavy cast steel bridge
- +Engineering version luxury cab

MORE RELIABLE FORKLIFT



BETTER MATERIAL

Made of manganese steel, not easy to deform or break

STRONGER MOTIVATION

Four-wheel drive means a substantial increase in handling efficiency

ENERGY-SAVING AND FUEL-SAVING

Compared with other forklifts, the average fuel consumption is lower

LUXURY CAB

Fully tempered glass on all sides, wide field of vision, sport suspension seat, no fatigue at work

BRAND ENGINE

Stronger power and stable performance

ANTI-SKID TIRES

Guizhou Qianjin brand steel wire tires, four-layer steel wire wrap, anti-wear and puncture-proof

LED LIGHTING

Equipotential matrix arrangement, increase light concentration and brightness

BOLD CHAIN

Upgraded lifting force, not easy to break, strong bearing capacity

HYDRAULIC SYSTEM

Imported hydraulic system, fast working speed, durable

EXCELLENT MATERIAL

One-piece molding, forged forks, long service life, not easy to deform/break





T40B			
Model	T40B	Rated power	65kw
Dimensions	4400*1900*2800	Climbing angle	< 38°
Engine model	4100Supercharge	Lifting height	3000-6000mm
Fork length	1200mm	Door frame ground clearance	250-350mm
Lifting weight	4000kg	Drive method	four-wheel drive
Turning radius	4500mm	Gearbox	280Double high and low speed
Door frame	Articulation thickness40mm	Axle	Big wheel side weighted cast steel bridge
Tires	Vacuum steel tire16/70-20	Vehicle weight	5200kg



Imported hydraulic system, fast working speed, durable.



Guizhou Qianjin brand steel wire tires, four-layer steel wire wrap, anti-wear and puncture-proof.



One-piece molding, forged forks, long service life, not easy to deform/break.



Fully tempered glass on all sides, wide field of vision, sport suspension seat, no fatigue at work.



WOOD GRAPPLE



BUCKET



VERTICAL BOOM



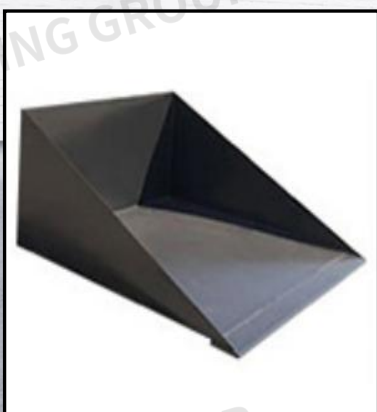
ELECTOR



CLIP



ROUND CLIP



FLAT BUCKET



DOWNTILT

DO MORE JOBS VERSATILE ATTACHMENTS

Compared with other working conditions, it can be equipped with multi-functional attachments, and Shanding forklifts can meet all your application requirements.



CROSS-COUNTRY FORKLIFT

SD-T50B

PRODUCT ADVANTAGES

- +Articulated steering
- +Steel tyre
- +Wheel deceleration and heavy cast steel bridge
- +Engineering version luxury cab



MORE RELIABLE FORKLIFT



BETTER MATERIAL

Made of manganese steel, not easy to deform or break



STRONGER MOTIVATION

Four-wheel drive means a substantial increase in handling efficiency



ENERGY-SAVING AND FUEL-SAVING

Compared with other forklifts, the average fuel consumption is lower

LUXURY CAB

Fully tempered glass on all sides, wide field of vision, sport suspension seat, no fatigue at work

BRAND ENGINE

Stronger power and stable performance

ANTI-SKID TIRES

Guizhou Qianjin brand steel wire tires, four-layer steel wire wrap, anti-wear and puncture-proof

LED LIGHTING

Equipotential matrix arrangement, increase light concentration and brightness

BOLD CHAIN

Upgraded lifting force, not easy to break, strong bearing capacity

HYDRAULIC SYSTEM

Imported hydraulic system, fast working speed, durable

EXCELLENT MATERIAL

One-piece molding, forged forks, long service life, not easy to deform/break





T50B			
Model	T50B	Rated power	76KW
Dimensions	4200*1900*2800	Climbing angle	< 38°
Engine model	4102Supercharge	Lifting height	3000-6000mm
Fork length	1220mm	Door frame ground clearance	300-380mm
Lifting weight	5000kg	Drive method	four-wheel drive
Turning radius	4500mm	Gearbox	280Double high and low speed
Door frame	Articulation thickness45mm	Axle	Big wheel side weighted cast steel bridge
Tires	Vacuum steel tire	Vehicle weight	6200kg



Imported hydraulic system, fast working speed, durable.



Guizhou Qianjin brand steel wire tires, four-layer steel wire wrap, anti-wear and puncture-proof.



One-piece molding, forged forks, long service life, not easy to deform/break.



Fully tempered glass on all sides, wide field of vision, sport suspension seat, no fatigue at work.



WOOD GRAPPLE



BUCKET



VERTICAL BOOM



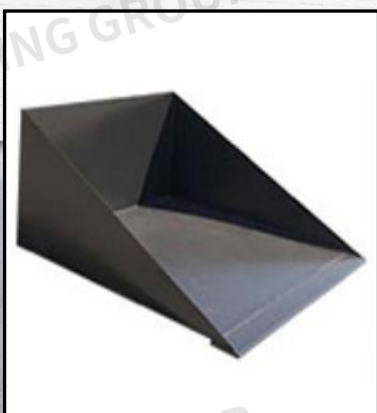
ELECTOR



CLIP



ROUND CLIP



FLAT BUCKET



DOWNTILT

DO MORE JOBS VERSATILE ATTACHMENTS

Compared with other working conditions, it can be equipped with multi-functional attachments, and Shanding forklifts can meet all your application requirements.



CROSS-COUNTRY FORKLIFT

SD-T60B

PRODUCT ADVANTAGES

- +Articulated steering
- +Steel tyre
- +Wheel deceleration and heavy cast steel bridge
- +Engineering version luxury cab



MORE RELIABLE FORKLIFT



BETTER MATERIAL

Made of manganese steel, not easy to deform or break



STRONGER MOTIVATION

Four-wheel drive means a substantial increase in handling efficiency



ENERGY-SAVING AND FUEL-SAVING

Compared with other forklifts, the average fuel consumption is lower

LUXURY CAB

Fully tempered glass on all sides, wide field of vision, sport suspension seat, no fatigue at work

BOLD CHAIN

Upgraded lifting force, not easy to break, strong bearing capacity

BRAND ENGINE

Stronger power and stable performance

HYDRAULIC SYSTEM

Imported hydraulic system, fast working speed, durable

ANTI-SKID TIRES

Guizhou Qianjin brand steel wire tires, four-layer steel wire wrap, anti-wear and puncture-proof

EXCELLENT MATERIAL

One-piece molding, forged forks, long service life, not easy to deform/break

LED LIGHTING

Equipotential matrix arrangement, increase light concentration and brightness





T60B			
Model	T60B	Rated power	85kw
Dimensions	4400*2200*2900	Climbing angle	< 38°
Engine model	4105Supercharge	Lifting height	3000-6000mm
Fork length	1200mm	Door frame ground clearance	300-380mm
Lifting weight	6000kg	Drive method	four-wheel drive
Turning radius	4600mm	Gearbox	280Double high and low speed
Door frame	Articulation thickness45mm	Axle	SG30 wheel side heavy cast steel bridge
Tires	Vacuum steel tire	Vehicle weight	7200kg



Imported hydraulic system, fast working speed, durable.



Guizhou Qianjin brand steel wire tires, four-layer steel wire wrap, anti-wear and puncture-proof.



One-piece molding, forged forks, long service life, not easy to deform/break.



Fully tempered glass on all sides, wide field of vision, sport suspension seat, no fatigue at work.



WOOD GRAPPLE



BUCKET



VERTICAL BOOM



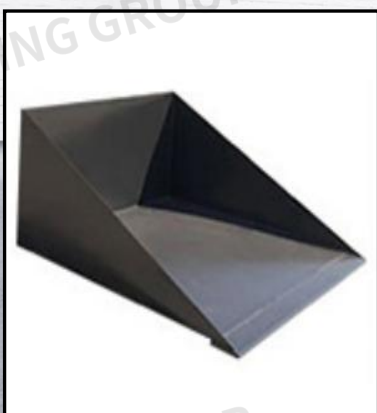
ELECTOR



CLIP



ROUND CLIP



FLAT BUCKET



DOWNTILT

DO MORE JOBS VERSATILE ATTACHMENTS

Compared with other working conditions, it can be equipped with multi-functional attachments, and Shanding forklifts can meet all your application requirements.