

浙江华广精工制造有限公司

Zhejiang Huaguang Seiko Manufacturing Co., Ltd



我们的使命是营造社会诚信，解决基础设施建设重要问题

**Our purpose is to build trust in
society and solve important
problems of social infrastructure.**

目录

Contents

Page

公司简介	2
Company Profile	
人才和资源	3
Talent and Resources	
国际认证	3
International certification	
公司产品	4
Corporate Product	
主要产品目录	5
Main Product Catalog	
管理机制	14
Management Mechanism	
公司荣誉	15
Corporate Honor	
国际交流	16
International Activity	

公司简介

Company Profile

名称 Name	浙江华广精工制造有限公司 Zhejiang Huaguang Seiko Manufacturing Co., Ltd
--------------------------	--

法人代表 legal representative	虞安梅 Yu Anmei
--	-----------------

成立时间 Established	2003
-----------------------------------	------

注册资金 Registered capital	人民币1,050万 10.5 Million CNY
--	-------------------------------

公司所在地 Address	〒325303 中国浙江省温州文成县巨屿工业园区 Juyu Industrial Park, Wencheng Prefecture, Wenzhou, Zhejiang Province, China Tel: 0577-67701369
--------------------------------	--

主营业务 Main Business	制造汽车配件，摩托车配件，机械零部件，高速铁路轨道垫板。 Manufacturing auto parts, motorcycle parts, mechanical parts, bullet train railway tie plate.
-------------------------------------	---

人才和资源

Talent and Resources

浙江华广精工制造有限公司是中国浙南地区规模最大的锻造企业之一。公司占地面积40000平方米，建筑面积30000平方米。公司正式员工178人，其中：具有大学专科以上学历的中高级工程技术人员29人。我们建设了温州市企业技术研发中心，在创新上舍得投资，先后研制出一大批实用新型锻造工艺技术，取得了项科研成果获得国家专利。

Our company is one of the largest forging companies in southern of Zhejiang Province. The company covers an area of 40,000 square meters and a building area of 30,000 square meters. The company has 178 full-time employees, including 29 senior engineers and technical specialists with college degree or above. We established the Wenzhou Enterprise Technology R&D Center, and focus on investing in innovative technology. In which, it has developed a large number of practical new forging technology and obtained national patents for scientific research results.

国际认证

International certification

公司通过ISO9001：2008与ISO/TS16949：2009质量管理体系认证；通过ISO14001：2004环境管理体系认证；通过GB/T28001：2001职业健康安全管理体系认证，属全方位管理体系认证企业。

Our company is a comprehensive management system certification enterprise, in which passed the international certification below:

- ISO9001:2008 quality management system certification
- ISO/TS16949:2009 quality management system certification
- ISO14001:2004 environmental management system certification
- GB/T28001:2001 occupational health and safety management system certification

公司产品

Corporate Product

精密锻造铁路垫板是我司的主导产品之一。是公司浙江师范大学机械设备与测控技术研究所以及中科院金属研究所合作研究开发，具有自主知识产权的新产品。公司具备精锻铁路垫板，从模具设计与加工、锻造工艺编制与调试，到锻后处理及质量保证等全过程的生产条件和年产42万件的生产能力。

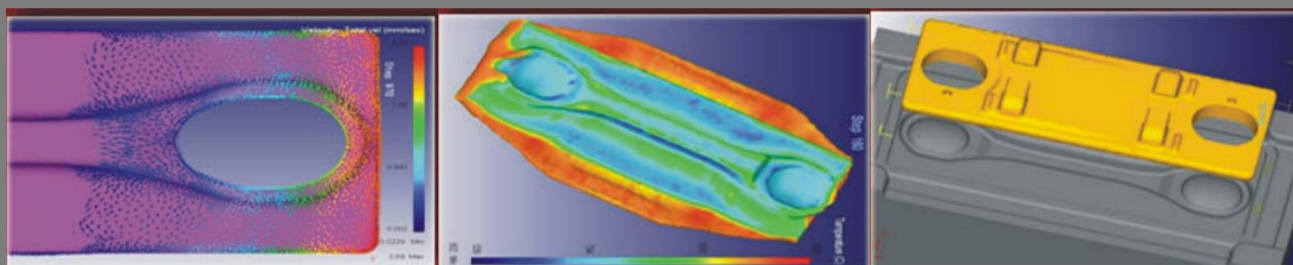
目前我司是国内唯一具有大批量生产精锻铁路垫板能力的厂家。产品已大量用于京沪高铁和出口日本、德国、俄罗斯、泰国及澳大利亚等国家。

The Precision forged Railway Tie Plate is one of our leading products. It is a new type of product R&D by our company in cooperation with the ZHEJIANG NORMAL UNIVERSITY and INSTITUTE OF METAL RESEARCH, CHINESE ACADEMY OF SCIENCES, in which has independent intellectual property rights. Our company has the production conditions of precision forging Railway Tie Plate, from modeling and processing, forging process preparation and debugging, to forging treatment and quality assurance, and annual production capacity of 420,000 pieces.

At present, our company is the ONLY manufacturer in China that has the ability to produce precision forged Railway Tie Plate in large quantities. Products have been widely used in Beijing-Shanghai high-speed railway, and exported to Japan for Shinkansen, Germany, Russia, Thailand, Australia and other countries.

精锻模拟技术

Precision Forging Technology



主要产品目录

Main Product Catalog

精锻轨道垫板

Precision Forged Railway Tie Plate



弹簧垫板01



弹簧垫板02



弹簧垫板03



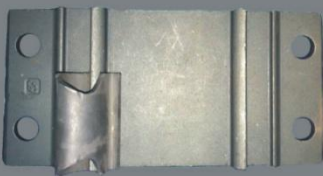
弹簧垫板04



弹簧垫板05



弹簧垫板06



弹簧垫板07



弹簧垫板08



弹簧垫板09



弹簧垫板10



弹簧垫板11



弹簧垫板12

主要产品目录

Main Product Catalog

精锻轨道垫板附属品

Precision Forged Railway Tie Plate Accessory



轨道扣件01



轨道扣件02



轨道扣件03



轨道扣件04



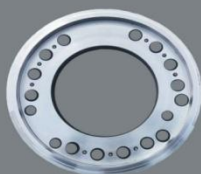
轨道鱼尾板



高铁特殊垫板



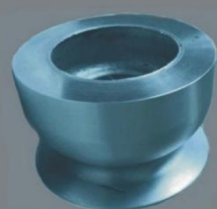
其他锻件



机械配件01



机械配件02



机械配件03



盾构机系列



汽车制动底板

主要产品目录

Main Product Catalog



0701M



H005M



F3201



0502M



6502M



1400M



H0102M



B111400M



21101



0801M



H005M



6502

主要产品目录

Main Product Catalog



底盘件



卡车地盘件



底盘件



底盘件



底盘件



底盘件



底盘件



汽车锻件



汽车锻件



汽锤锻件



锤头



7字臂

主要产品目录

Main Product Catalog



小连杆



起动杆



拉臂



起动杆



接头拉杆



一字拉臂



气锤把手锻件



手把锻件



曲轴



曲柄



曲柄



刹车臂

主要产品目录

Main Product Catalog



平衡轴



摆线轮



吊耳



吊耳锻件



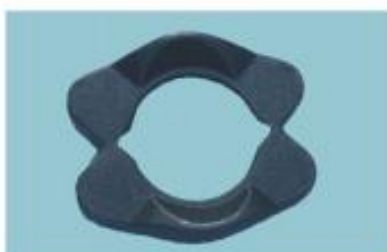
环形锻件



接头法兰



千斤顶底座



小法兰



保险扣



奔驰大巴轮毂



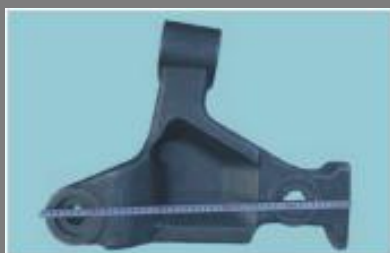
蝶阀锻件



拉吊件

主要产品目录

Main Product Catalog



北方大巴支撑梁



奔驰大巴转向节



奔驰大巴转向节



奔驰大巴支撑



转向节



转向节



转向节



转向节



十字轴



制动锻件



机车锻件



凸轮轴

主要产品目录

Main Product Catalog



连杆



连杆



连杆



吊件



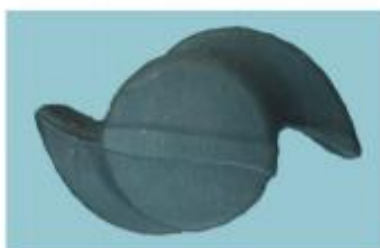
齿轮



机车锻件



骨头链



凸轮头



把手锻件



汽配锻件



曲轴



转向节

主要产品目录

Main Product Catalog



高铁引杆



高铁车厢拉杆



接头法兰



工程拉臂



农机锻件



工程机械锻件



火车锻件



工程机械锻件



矿山机械配件



工程配件锻件



挖机斗根



矿山机械配件

管理机制

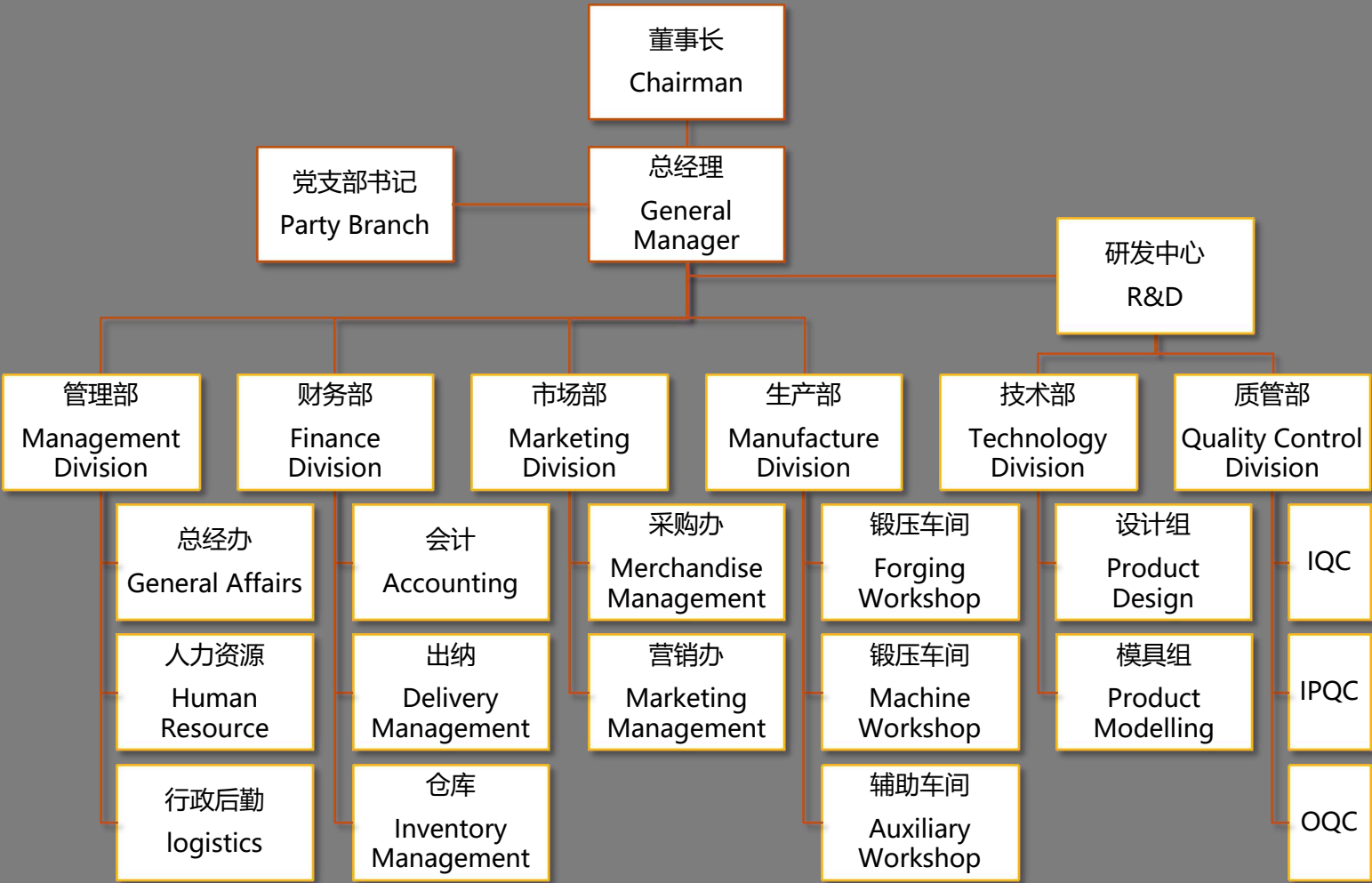
Management Mechanism

公司严格按照《公司法》、《公司章程》治理企业，规范法人治理结构。公司产权明晰、管理严格、制度完善、机构设置合理、公司运营顺畅，自2010年以来经济效益始终保持持续稳定地增长势态。

Our company strictly controls the enterprise in accordance with the "Company Law" and "Articles of Association" and regulates the corporate governance structure. The company's property rights are clear, management is strict, the system is perfect, the organization is reasonable, and the company operates smoothly. Since 2010, the economic benefits have maintained a steady and steady growth trend.

公司结构图

Company Organization Chart



公司荣誉

Corporate Honor

由锻造工艺取代原有的铸造工艺,填补了国内高速铁路轨道扣件金属垫板精密锻造工艺的空白,同时获得了20余项国家知识产权专利。

The forging process replaces the original casting process, filling the blank of the precision forging process of the domestic high-speed railway track fastener metal backing plate, and has obtained more than 20 national intellectual property patents.

产品和技术的专利证书

Product and Technology Patent Certificate



国际交流

International Activity

我司已接待来自国内外40余家厂商的正式考察，并建立有长期稳定的合作关系。公司自主开发的主导产品精锻高铁垫板在北京、上海等国际展会上引起了国内外客户的高度关注，精锻高铁垫板目前已日本、泰国、德国、俄罗斯等更加百万余件。

Our company has received formal inspections from more than 40 manufacturers at home and abroad, and has established long-term stable cooperative relations. The leading product of the company's self-developed Precision Forged Railway Tie Plate has attracted high attention from customers at international exhibitions in Beijing and Shanghai. The Precision Forged Railway Tie Plate has now been used in Japan and Thailand. Germany, Russia and more have more than millions of pieces.



参加国际展览会 Participated International Exhibitions



福斯罗集团（图左）和三井物产（图右）来访
Inspection from Vossloh (Left) and Mitsui & Co. (Right)

感谢观赏

Thanks for watching

