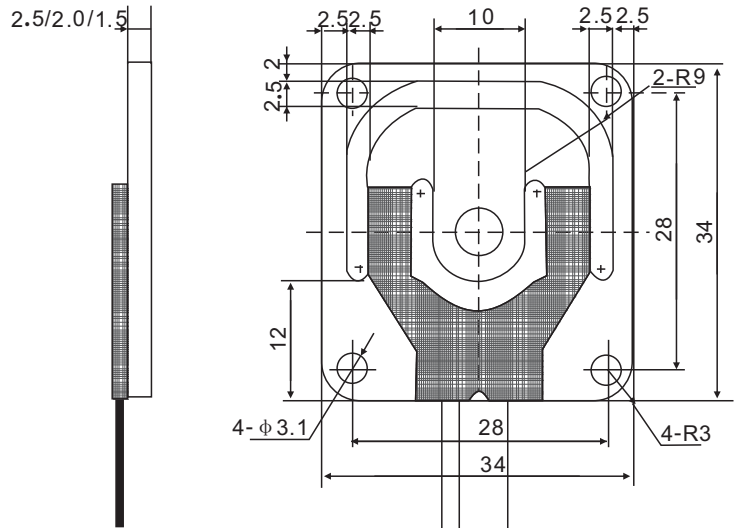
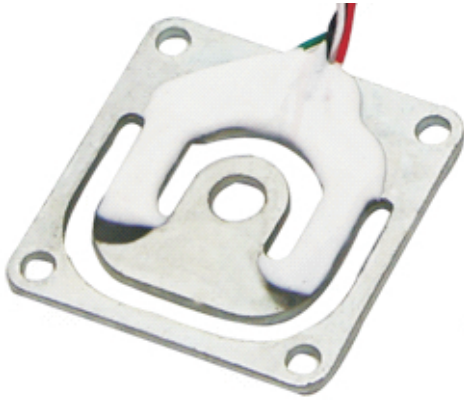


Micro load cell GML670

Installation size (mm): 34×34*1.5/2.0/2.5



Range : 10kg t : 1.5mm , T : 3.5 ± 0.2mm
 Range : 30kg t : 2.0mm , T : 4.0 ± 0.2mm
 Range : 50kg t : 2.5mm , T : 4.5 ± 0.2mm

Features

- Material:manganese steel,surface anodic oxidation treatment;
- High precision, half bridge or full bridge ;
- Application:portable scale and other miniature electronic weighing equipment.

Technical Specification

Rated capacity	10, 30, 50kg	Input resistance	1000±10Ω
Rated output-full bridge	2.0±0.15mV/V (30-50 kg) 1.0±0.15mV/V (10kg)	Output resistance	1000±10Ω
		Temp. effect on span	0.05 % F.S/10°C
Rated output-half bridge	1.0±0.15mV/V (30-50kg) 0.5±0.15mV/V (10kg)	Temp. effect on zero	0.1%F.S/10°C
		Excitation voltage	3 ~ 10VDC
Comprehensive error	0.05%F.S	Compensated temp.range	-10 ~ +40°C
Non-linearity	0.05%F.S	Safe overload	120%F.S
Repeatability	0.05%F.S	Ultimate overload	150%F.S
Hysteresis error	0.05%F.S	Defend grade	IP65
Creep	0.05%F.S/3min	Cable	Three or Four color PVC wires
Zero output	±0.3mV/V	Cable length	φ0.8*200-400mm
Insulation resistance	≥2000MΩ		