



Product data sheet

聚乙丙交酯 Poly(L-lactide-co-glycolide)(PLGA)

Description

Poly(lactic-co-glycolic acid) is a copolymer which is used in a host of Food and Drug Administration (FDA) approved therapeutic devices, owing to its biodegradability and biocompatibility. PLGA are currently widely used in many fields, such as bone nail; coatings; lifting thread; absorbable suture; ophthalmic implant; microspheres, gel for drug delivery etc.

Physical-chemical properties

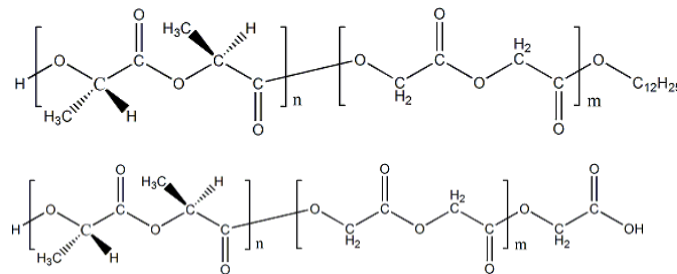
Chemical name

Poly(L-lactide-co-glycolide)

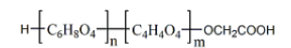
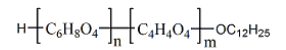
CAS Registry number

30846-39-0

Chemical structure



Molecular formula



Parameter

Item

Test Method

Specification

Appearance

Visual

White, pale yellow powder or floccule

Inherent viscosity

Ubbelohde viscometer

0.20-2.50 dl/g

Residual Solvent

Gas Chromatography

≤0.5%

Heavy Metal

Chemical Reagent

≤10 ppm

Sulphated Ash

Sulfuric Acid

≤0.1%

For each batch a certificate of analysis is provided, showing the analytical data determined in our quality control laboratory. Additional analytical data can be made upon request.

Packaging

100g/500g/1Kg per aluminum foil bag

Recommend storage

Stored in a cool and dry place without sunlight, a refrigerator is recommended.

Temperatures (2-8°C)

Notice: PLGA with intrinsic viscosity below 0.3 is powdered and will be melt at 18-22 °C.



Shelf life

When stored in the original packaging at low temperatures (2-8°C), PLGA keeps its initial properties for at least two years.

Product catalogue	Model	L-LA/GA Ratio	IV	L-LA/GA Proportional Range	IV Range dl/g
	PLG85-03	85/15	0.3	82/18-88/12	0.20-0.40
	PLG85-05	85/15	0.5	82/18-88/12	0.40-0.70
	PLG85-08	85/15	0.8	82/18-88/12	0.70-1.00
	PLG85-12	85/15	1.2	82/18-88/12	1.00-1.40
	PLG85-16	85/15	1.6	82/18-88/12	1.40-1.80
	PLG85-20	85/15	2.0	82/18-88/12	1.80-2.50
	PLG75-03	75/25	0.3	72/28-78/22	0.20-0.40
	PLG75-05	75/25	0.5	72/28-78/22	0.40-0.70
	PLG75-08	75/25	0.8	72/28-78/22	0.70-1.00
	PLG75-12	75/25	1.2	72/28-78/22	1.00-1.40
	PLG75-16	75/25	1.6	72/28-78/22	1.40-1.80
	PLG75-20	75/25	2.0	72/28-78/22	1.80-2.50
	PLG50-03	50/50	0.3	47/53-53/47	0.20-0.40