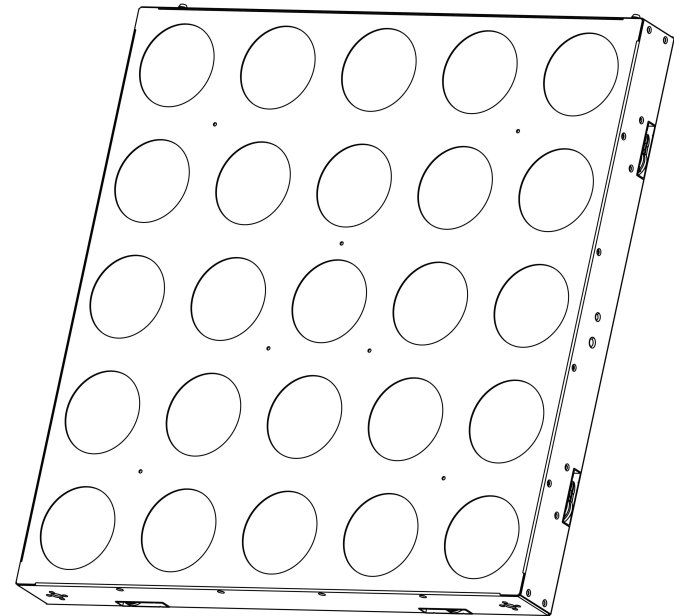


EV LIGHT[®]

EV-MTX25



EV LIGHT (GUANGZHOU) CO., LTD.
ADD: EV INDUSTRIAL PARK, 8 CHUANGYE ROAD, TAIPING
DEVELOPMENT ZONE, GUANGZHOU
TEL: +86-20-37929678
FAX: +86-20-37929298
WEBSITE: [Http://www.evlightpro.com](http://www.evlightpro.com)

User Guide

Professional Entertainment Technology

TABLE OF CONTENTS

1. Safety Instructions
2. Technical Specifications
3. Installation
4. How to set the unit
5. How to control the unit
6. DMX512 Configuration
7. DMX512 Connections
8. Troubleshooting
9. Fixture Cleaning

B. Not responding to DMX controller

1. DMX LED should be on. If not, check DMX connectors, cables to see if link properly.
2. If the DMX LED is on and no response to the channel, check the address settings and DMX polarity.
3. If you have intermittent DMX signal problems, check the pins on connectors or on PCB of the fixture or the previous one.
4. Try to use another DMX controller.
5. Check if the DMX cables run near or run alongside to high voltage cables that may cause damage or interference to DMX interface circuit.

C. Some fixtures don't respond to the easy controller

1. You may have a break in the DMX cabling.
2. Check the LED for the response of the master/ slave mode signal.

D. No response to the sound

1. Make sure the fixture does not receive DMX signal.
2. Check microphone to see if it is good by tapping the microphone.

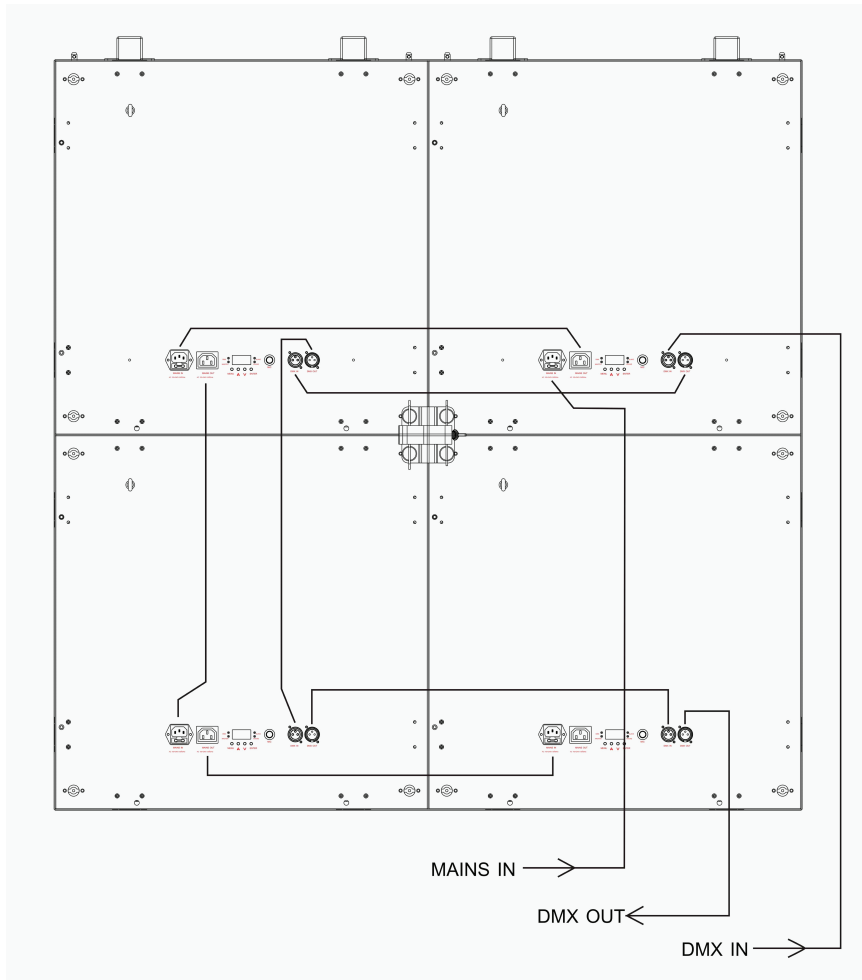
E. One of the channels is not working well

1. The stepper motor might be damaged or the cable connected to the PCB is broken.
2. The motor's drive IC on the PCB might be out of condition.

9. Fixture Cleaning

The cleaning of internal must be carried out periodically to optimize light output. Cleaning frequency depends on the environment in which the fixture operates: damp, smoky or particularly dirty surrounding can cause greater accumulation of dirt on the fixture's optics.

- Clean with soft cloth using normal glass cleaning fluid.
- Always dry the parts carefully.
- Clean the external optics at least every 20 days. Clean the internal optics at least every 30/60 days.



1. Safety Introductions



WARNING

Please read the instructions carefully which includes important information about the installation, operation and maintenance.

- Please keep this User Manual for future consultation. If you sell the fixture to another user, be sure that they also receive this instruction booklet.
- Unpack and check carefully there is no transportation damage before using the fixture.
- It's important to ground the yellow/green conductor to earth in order to avoid electric shock.
- Disconnect main power before servicing and maintenance.
- The unit must be installed in a location with adequate ventilation, at least 50cm from adjacent surfaces. Be sure that no ventilation slots are blocked.
- Maximum ambient temperature is $T_a : 40^{\circ}\text{C}$. Don't operate it where the temperature is higher than this.
- Unit surface temperature may reach up to 85°C . Don't touch the housing bare-hand during its operation. Turn off the power and allow about 15 minutes for the unit to cool down before replacing or serving.
- In the event of serious operating problem, stop using the fixture immediately. Never try to repair the fixture by yourself. Repairs carried out by unskilled people can lead to damage or malfunction. Please contact the nearest authorized technical assistance center. Always use the same type spare parts.
- Do not connect the device to any dimmer pack.
- Do not touch any wire during operation and there might be a hazard of electric shock.
- To prevent or reduce the risk of electrical shock or fire, do not expose the fixture to rain or moisture.
- The housing must be replaced if they are visibly damaged.
- Do not look directly at the LED light beam while the fixture is on.
- There are no user serviceable parts inside the fixture. Do not open the housing or attempt any repairs by yourself. In the unlikely event your fixture may require service, please contact your nearest dealer.
- Due to the magnifying type lens, please keep the lens out of contact with direct sunlight. Direct sunlight can cause heat to build up inside of the unit, which will seriously damage unit.

8. Troubleshooting

Following are a few common problems that may occur during operation. Here are some suggestions for easy troubleshooting:

A. The fixture does not work, no light

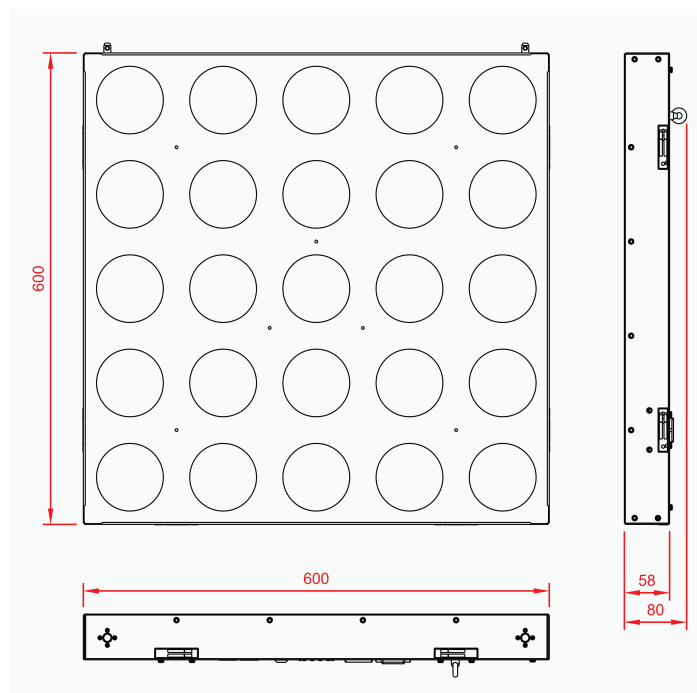
1. Check the connection of power and main fuse.
2. Measure the mains voltage on the main connector.

If using a 230Vac 50Hz power supply, do not connect in series more than 8 units, use another mains supply for the next 8 units.

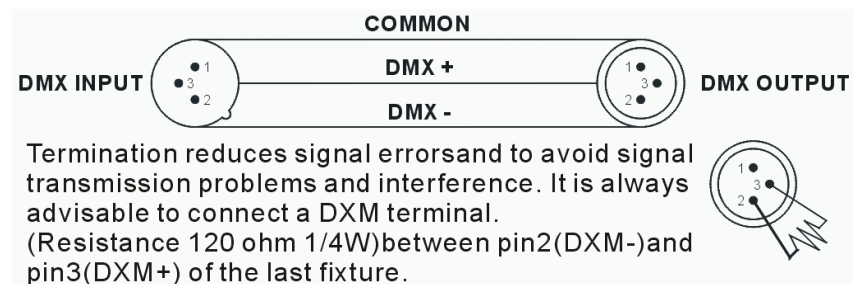
If using a 120Vac 60Hz power supply, do not connect in series more than 4 units, use another mains supply for next 4 units.

2. Technical Specifications

- DMX 1/4/9/25/29 channels switchable.
- Smooth 0~100% dimming and variable strobe speeds.
- Three operation modes: DMX, Master/Slave mode, Sound Active.
- Ideal for discotheques, clubs, bars, parties, Mobile DJs, ect.
- Power Supply: 120~230V 50/60Hz
- Fuse: T 6.3A
- Power consumption: 100W
- LED: 25 x 3W WW LED
- Dimension: 600 x 600 x 146 mm
- Weight: 10 kgs

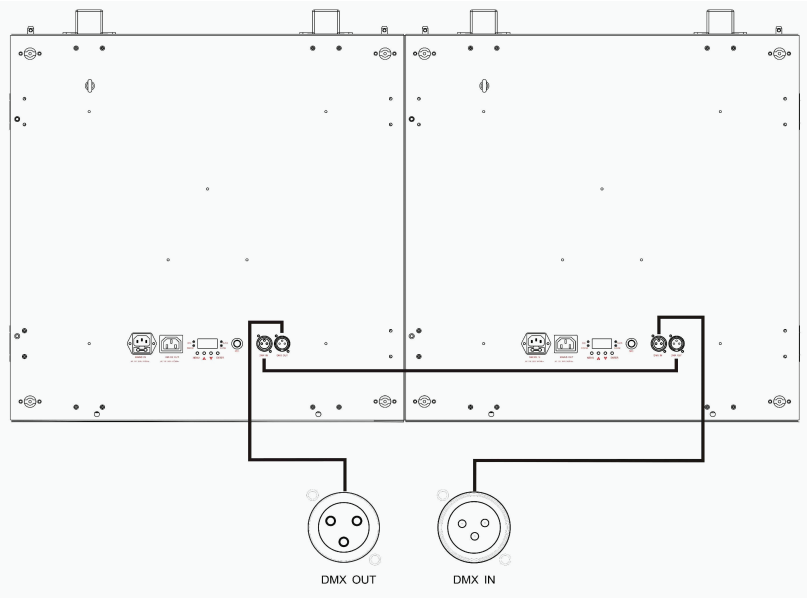


-3-

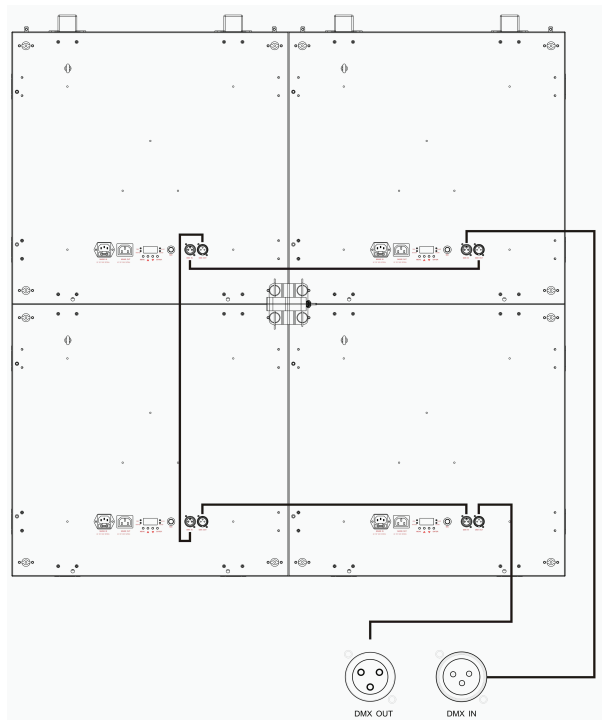


1. Connect the fixture together in a “daisy chain” by XLR plug cable from the output of the fixture to the input of the next fixture. The cable cannot be branched or split to a “Y” cable. Inadequate or damaged cables, soldered joints or corroded connectors can easily distort the signal and shut down the system.
2. The DMX output and input connectors are pass-through to maintain the DMX circuit when one of the units’ power is disconnected.
3. At last fixture, the DMX cable has to be terminated with a terminator to reduce signal errors. Solder a 120-ohm 1/4W resistor between pin 2(DMX-) and pin 3(DMX+) into a 3-pin XLR-plug and plug it in the DMX-output of the last fixture.
4. Each lighting fixture needs to have an address set to receive the data sent by the controller. The address number is between 0-511 (usually 0 & 1 are equal to 1).
5. 3 pin XLR connectors are more popular than 5 pins XLR.
3 pin XLR: Pin 1: GND, Pin 2: Negative signal (-), Pin 3: Positive signal (+)
5 pin XLR: Pin 1: GND, Pin 2: Negative signal (-), Pin 3: Positive signal (+),
Pin4/5: not used

-16-



2-2 mode connection:



3. Installation

The unit should be mounted via its screw holes on the bracket. Always ensure that the unit is firmly fixed to avoid vibration and slipping while operating. Always ensure that the structure to which you are attaching the unit is secure and is able to support a weight of 10 times of the unit's weight. Also always use a safety cable that can hold 12 times of the weight of the unit when installing the fixture.

The equipment must be fixed by professionals. And it must be fixed at a place where is out of the touch of people and has no one pass by or under it, the range of mounting height is 0~30 M.

3.1 Fixture Jointing

Firstly, plug L type Hexagon wrench into the hole back of the fixture to fasten and locate two fixtures so that movement won't happen and jointing become more conveniently;

Secondly, use L type Hexagon wrench to counter-clockwise rotate connection lock to the end until lock tongue returns back, for direction please see arrow ① showed in figure 1, and the next step, use Hexagon wrench clockwise rotate connection lock to the end, see arrow ②.

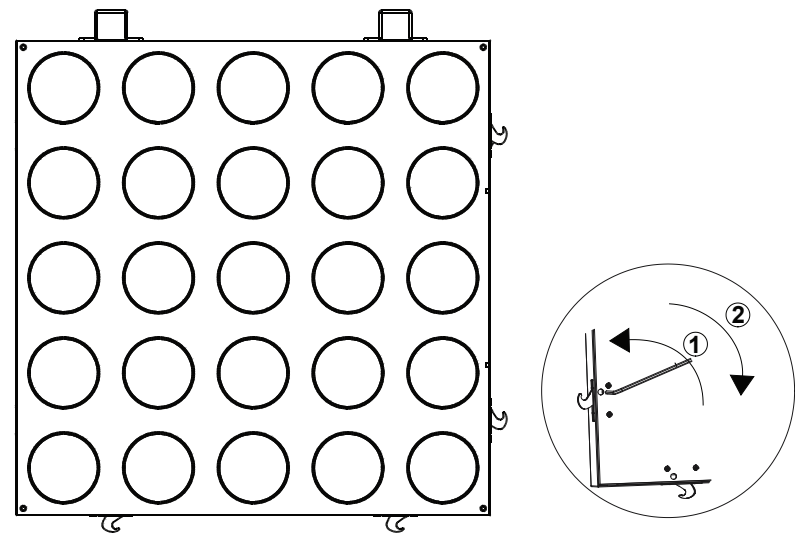


Figure 1

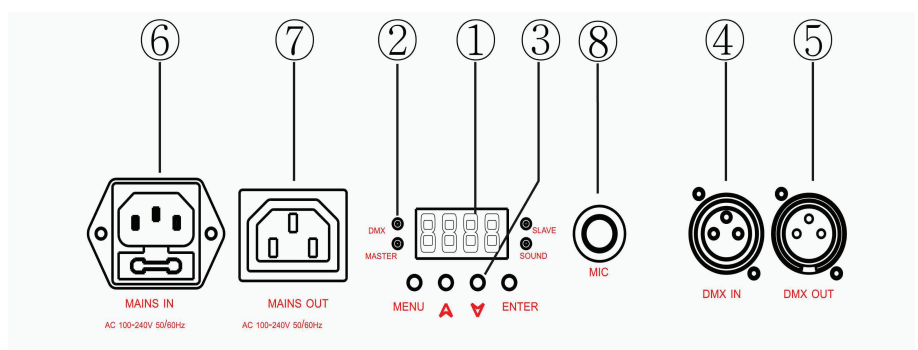
Finished fixture jointing is showed as follows:



Quick lock1, For within four pcs, splicing in this way; Quick lock2, For more than four pcs (including four), must install the locks in this way for splicing and fixing;

4. How to set the unit

4.1 Rear Panel



① **Display:** To show the various menus and the selected functions

DMX 512 Configuration												
29-CH mode												
Ch1	Ch2	Ch3	Ch4	Ch5	Ch6	Ch7	Ch8	Ch9	Ch10	Ch11	Ch12	Ch13
Dimmer1	Dimmer2	Dimmer3	Dimmer4	Dimmer5	Dimmer6	Dimmer7	Dimmer8	Dimmer9	Dimmer10	Dimmer11	Dimmer12	Dimmer13
255-100%	255-100%	255-100%	255-100%	255-100%	255-100%	255-100%	255-100%	255-100%	255-100%	255-100%	255-100%	255-100%
0-0%	0-0%	0-0%	0-0%	0-0%	0-0%	0-0%	0-0%	0-0%	0-0%	0-0%	0-0%	0-0%
Ch14	Ch15	Ch16	Ch17	Ch18	Ch19	Ch20	Ch21	Ch22	Ch23	Ch24	Ch25	
Dimmer14	Dimmer15	Dimmer16	Dimmer17	Dimmer18	Dimmer19	Dimmer20	Dimmer21	Dimmer22	Dimmer23	Dimmer24	Dimmer25	
255-100%	255-100%	255-100%	255-100%	255-100%	255-100%	255-100%	255-100%	255-100%	255-100%	255-100%	255-100%	
0-0%	0-0%	0-0%	0-0%	0-0%	0-0%	0-0%	0-0%	0-0%	0-0%	0-0%	0-0%	
Ch26	Ch27			Ch28	Ch29							
Mode	2-1(Line effect)	2-2(Number)	2-3(Letter)	Dimmer	Strobe							
248-255	Stand alone (trigger by sound)	248-255 Random line effect 240-247 effect30 slow to fast 232-239 effect29 slow to fast 224-231 effect28 slow to fast 216-223 effect27 slow to fast 208-215 effect26 slow to fast 200-207 effect25 slow to fast 192-199 effect24 slow to fast 184-191 effect23 slow to fast 176-183 effect22 slow to fast 168-175 effect21 slow to fast 160-167 effect20 slow to fast 152-159 effect19 slow to fast 144-151 effect18 slow to fast 136-143 effect17 slow to fast 128-135 effect16 slow to fast 120-127 effect15 slow to fast 112-119 effect14 slow to fast 104-111 effect13 slow to fast 096-103 effect12 slow to fast 088-095 effect11 slow to fast 080-087 effect10 slow to fast 072-079 effect09 slow to fast 064-071 effect08 slow to fast 056-063 effect07 slow to fast 048-055 effect06 slow to fast 040-047 effect05 slow to fast 032-039 effect04 slow to fast 024-031 effect03 slow to fast 016-023 effect02 slow to fast 008-015 effect01 slow to fast 000-007 no function	236-255 To count forwards 9 down to 0 from slow to fast 216-235 To count forwards 0 up to 9 from slow to fast 196-215 Number-9 176-195 Number-8 156-175 Number-7 136-155 Number-6 116-135 Number-5 096-115 Number-4 076-095 Number-3 056-075 Number-2 036-055 Number-1 016-035 Number-0 000-015 No function	247-255 Letter-Z 238-246 Letter-Y 229-237 Letter-X 220-228 Letter-W 211-219 Letter-V 202-210 Letter-U 193-201 Letter-T 184-192 Letter-S 175-183 Letter-R 166-174 Letter-Q 157-165 Letter-P 148-156 Letter-O 139-147 Letter-N 130-138 Letter-M 121-129 Letter-L 112-120 Letter-K 103-111 Letter-J 094-102 Letter-I 085-093 Letter-H 076-084 Letter-G 067-075 Letter-F 058-066 Letter-E 049-057 Letter-D 040-048 Letter-C 031-039 Letter-B 022-030 Letter-A 000-021 No function	255-100%	248-255 Open 240-247 Sound strobe 232-239 Open 190-231 Fast open slow close 182-189 Open 140-181 Slow open fast close 132-139 Open 8-131 Strobe slow to fast 0-7 Open						

7. DMX512 Connections

mode connection:

Ch6		Ch7			Ch8	Ch9
Mode	2-1(Line effect)	2-2(Number)	2-3(Letter)	Dimmer (All)	Strobe	
255 248-255 188-247 128-187 068-127 045-067 022-044 000-021 0	248-255 Random line effect 240-247 effect30 slow to fast 232-239 effect 29 slow to fast 224-231 effect 28 slow to fast 216-223 effect 27 slow to fast 208-215 effect 26 slow to fast 200-207 effect25 slow to fast 192-199 effect24 slow to fast 184-191 effect23 slow to fast 176-183 effect22 slow to fast 168-175 effect21 slow to fast 160-167 effect20 slow to fast 152-159 effect19 slow to fast 144-151 effect18 slow to fast 136-143 effect17 slow to fast 128-135 effect16 slow to fast 120-127 effect15 slow to fast 112-119 effect14 slow to fast 104-111 effect13 slow to fast 096-103 effect12 slow to fast 088-095 effect11 slow to fast 080-087 effect10 slow to fast 072-079 effect09 slow to fast 064-071 effect08 slow to fast 056-063 effect07 slow to fast 048-055 effect06 slow to fast 040-047 effect05 slow to fast 032-039 effect04 slow to fast 024-031 effect03 slow to fast 016-023 effect02 slow to fast 008-015 effect01 slow to fast 000-007 no function	236-255 To count forwards 9 down to 0 from slow to fast 216-235 To count forwards 0 up to 9 from slow to fast 196-215 Number-9 176-195 Number-8 156-175 Number-7 136-155 Number-6 116-135 Number-5 096-115 Number-4 076-095 Number-3 056-075 Number-2 036-055 Number-1 016-035 Number-0 000-015 No function	247-255 Letter-Z 238-246 Letter-Y 229-237 Letter-X 220-228 Letter-W 211-219 Letter-V 202-210 Letter-U 193-201 Letter-T 184-192 Letter-S 175-183 Letter-R 166-174 Letter-Q 157-165 Letter-P 148-156 Letter-O 139-147 Letter-N 130-138 Letter-M 121-129 Letter-L 112-120 Letter-K 103-111 Letter-J 094-102 Letter-I 085-093 Letter-H 076-084 Letter-G 067-075 Letter-F 058-066 Letter-E 049-057 Letter-D 040-048 Letter-C 031-039 Letter-B 022-030 Letter-A 000-021 No function	255 100% 0 0%	255 248-255 240-247 232-239 190-231 182-189 140-181 132-139 8-131 0-7 0	Open Sound strobe Open Fast open slow close Open Slow open fast close Open Strobe slow to fast Open

25-CH mode:

DMX 512 Configuration												
25-CH mode												
Ch1	Ch2	Ch3	Ch4	Ch5	Ch6	Ch7	Ch8	Ch9	Ch10	Ch11	Ch12	Ch13
Dimmer1	Dimmer2	Dimmer3	Dimmer4	Dimmer5	Dimmer6	Dimmer7	Dimmer8	Dimmer9	Dimmer10	Dimmer11	Dimmer12	Dimmer13
255 100% 0 0%	255 100% 0 0%	255 100% 0 0%	255 100% 0 0%	255 100% 0 0%	255 100% 0 0%	255 100% 0 0%	255 100% 0 0%	255 100% 0 0%	255 100% 0 0%	255 100% 0 0%	255 100% 0 0%	255 100% 0 0%
Ch14	Ch15	Ch16	Ch17	Ch18	Ch19	Ch20	Ch21	Ch22	Ch23	Ch24	Ch25	
Dimmer14	Dimmer15	Dimmer16	Dimmer17	Dimmer18	Dimmer19	Dimmer20	Dimmer21	Dimmer22	Dimmer23	Dimmer24	Dimmer25	
255 100% 0 0%	255 100% 0 0%	255 100% 0 0%	255 100% 0 0%	255 100% 0 0%	255 100% 0 0%	255 100% 0 0%	255 100% 0 0%	255 100% 0 0%	255 100% 0 0%	255 100% 0 0%	255 100% 0 0%	

29-CH mode:

② LED:

DMX	On	DMX input present
MASTER	On	Master Mode
SLAVE	On	Slave Mode
SOUND	Flashing	Sound activation

③ Button:

MENU	To select the programming functions
DOWN	To go backward in the selected functions
UP	To go forward in the selected functions
ENTER	To confirm the selected functions

④ **DMX input:** For DMX512 link, use 3/5-pin XLR plug cable to input DMX signal.

⑤ **DMX output:** For DMX512 link, use 3/5-pin XLR plug cable to link the next unit.

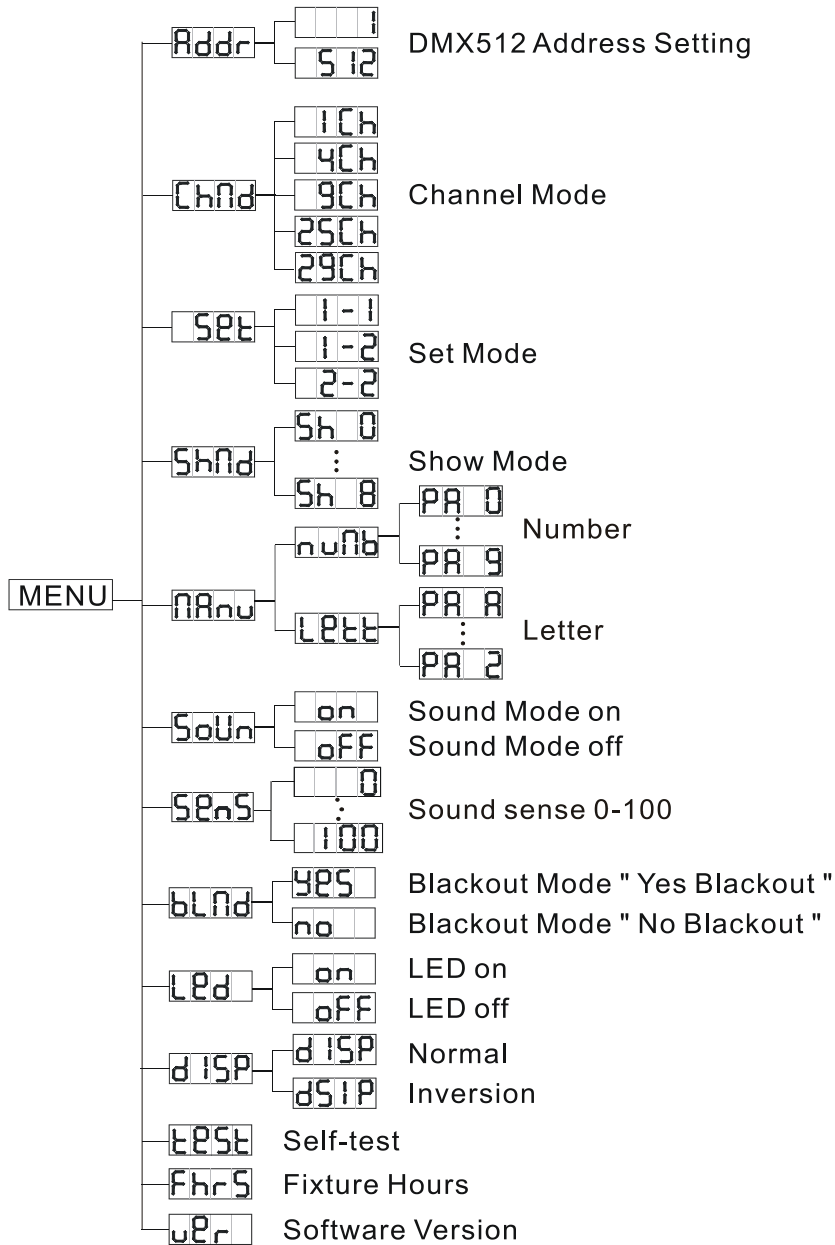
⑥ **Mains input:** Connect to supply mains power.

⑦ **Mains output:** Connect to supply mains power for the next unit.

⑧ **Microphone:** Receive music for the sound active.

4.2 Main Function

To select any functions, press **MENU** button until the required one is shown on the display. Select the function by **ENTER** button and the display will blink. Use **DOWN** and **UP** button to change the mode. Once the required mode has been selected, press **ENTER** button to setup or it will automatically return to the main functions without any change after idling 30 seconds. Back to the functions without any change press **MENU** button. The main functions are shown below:



1-CH mode	
Ch1	
Shows	
248-255 Stand alone	
218-247 Show 8	
188-217 Show 7	
158-187 Show 6	
128-157 Show 5	
098-127 Show 4	
068-097 Show 3	
038-067 Show 2	
008-037 Show 1	
000-007 Blackout	

4-CH mode:

DMX 512 Configuration

4-CH mode					
Ch1	Ch2			Ch3	Ch4
Mode	2-1(Line effect)	2-2(Number)	2-3(Letter)	Dimmer	Strobe
255 248-255 188-247 128-187 68-127 8-67 0-7 0	248-255 Random line effect 240-247 effect30 slow to fast 232-239 effect 29 slow to fast 224-231 effect 28 slow to fast 216-223 effect 27 slow to fast 208-215 effect 26 slow to fast 200-207 effect25 slow to fast 192-199 effect24 slow to fast 184-191 effect23 slow to fast 176-183 effect22 slow to fast 168-175 effect21 slow to fast 160-167 effect20 slow to fast 152-159 effect19 slow to fast 144-151 effect18 slow to fast 136-143 effect17 slow to fast 128-135 effect16 slow to fast 120-127 effect15 slow to fast 112-119 effect14 slow to fast 104-111 effect13 slow to fast 096-103 effect12 slow to fast 088-095 effect11 slow to fast 080-087 effect10 slow to fast 072-079 effect09 slow to fast 064-071 effect08 slow to fast 056-063 effect07 slow to fast 048-055 effect06 slow to fast 040-047 effect05 slow to fast 032-039 effect04 slow to fast 024-031 effect03 slow to fast 016-023 effect02 slow to fast 008-015 effect01 slow to fast 0007-007 no function	236-255 To count forwards 0 up to 9 from slow to fast 216-235 To count forwards 0 up to 9 from slow to fast 196-215 Number-9 176-195 Number-8 156-175 Number-7 136-155 Number-6 116-135 Number-5 096-115 Number-4 076-095 Number-3 056-075 Number-2 036-055 Number-1 016-035 Number-0 000-015 No function	247-255 Letter-Z 238-246 Letter-Y 229-237 Letter-X 220-228 Letter-W 211-219 Letter-V 202-210 Letter-U 193-201 Letter-T 184-192 Letter-S 175-183 Letter-R 166-174 Letter-Q 157-165 Letter-P 148-156 Letter-O 139-147 Letter-N 130-138 Letter-M 121-129 Letter-L 112-120 Letter-K 103-111 Letter-J 094-102 Letter-I 085-093 Letter-H 076-084 Letter-G 067-075 Letter-F 058-066 Letter-E 049-057 Letter-D 040-048 Letter-C 031-039 Letter-B 022-030 Letter-A 000-021 No function	255 100% 0 0%	255 Open 248-255 Sound strobe 240-247 232-239 Open 190-231 Fast open slow close 182-189 Open 140-181 Slow open fast close 132-139 Open 8-131 Strobe slow to fast 0-7 Open

9-CH mode:

9-CH mode

Ch1	Ch2	Ch3	Ch4	Ch5
Dimmer (LED1-5)	Dimmer (LED6-10)	Dimmer (LED11-16)	Dimmer (LED17-20)	Dimmer (LED21-25)
255 100% 0 0%	255 100% 0 0%	255 100% 0 0%	255 100% 0 0%	255 100% 0 0%

Addr DMX 512 Address Setting

No need to turn the unit off when you change the DMX address, as new DMX address setting will be affected at once. Each time you turn the unit on, it will show "0E25" on the display. After that the unit will be ready to receive DMX signal or run the built in programs.

5.1 Master/Slave Built In Preprogrammed Function

By linking the units in master/slave connection, the first unit will control the other units to give an automatic, sound activated, synchronized light show. This function is good when you want an instant show. You have to set the first unit in master mode and select **Sh 0** (random show), **Sh 1** (show 1) or ...or **Sh 8** (show 8). Its DMX input jack will have nothing plugged into it, and its master LED will be constantly on and sound LED will flash to the music.

5.2 DMX Controller

Using universal DMX controller to control the units, you have to set DMX address from 1 to 512 channel so that the units can receive DMX signal.

Press the **MENU** button up to when the **Addr** is showing on the display. Pressing **ENTER** button and the display will blink. Use **DOWN** and **UP** button to change the DMX512 address. Once the address has been selected, press and keep **ENTER** button pressed up to when the display stops blinking or storing automatically 8 seconds later. To go back to the functions without any change press the **MENU** button again. If you use please refer to the following diagram to address your DMX512 channel for the first 4 /2 units.

1 channels mode:	<input type="text" value="0001"/>	<input type="text" value="0002"/>	<input type="text" value="0003"/>	<input type="text" value="0004"/>
4 channels mode:	<input type="text" value="0001"/>	<input type="text" value="0005"/>	<input type="text" value="0009"/>	<input type="text" value="0013"/>
9 channels mode:	<input type="text" value="0001"/>	<input type="text" value="0010"/>	<input type="text" value="0019"/>	<input type="text" value="0028"/>
25 channels mode:	<input type="text" value="0001"/>	<input type="text" value="0026"/>	<input type="text" value="0051"/>	<input type="text" value="0076"/>
29 channels mode:	<input type="text" value="0001"/>	<input type="text" value="0030"/>	<input type="text" value="0059"/>	<input type="text" value="0088"/>

6. DMX512 Configuration

1-CH mode:

Press the **MENU** button up to when the **Addr** is shown on the display. Pressing the **ENTER** button and the display will blink. Use the **DOWN** and **UP** button to change the DMX 512 address. Once the address has been selected, press the **ENTER** button to setup or automatically exit menu mode without any change after 60 seconds. Back to the previous functions without any change press the **MENU** button.

Chan Channel Mode

Press the **MENU** button up to when the **Chan** is shown on the display. Pressing the **ENTER** button, Use the **DOWN** and **UP** button to select the **1CH** (1 channel) or **4CH** (4 channels) or **9CH** (9 Channels) or **25CH** (25 channels) or **29CH** (29 Channels) mode. Once selected, press the **ENTER** button to setup or automatically exit menu mode without any change after 60 seconds. To go back to the functions without any change press the **MENU** button

SLAV Slave Mode

Press the **MENU** button up to when the **SLAV** is shown on the display. Pressing the **ENTER** button, Use the **DOWN** and **UP** button to select the **SL 1** (slave 1) or **SL 2** (Slave 2) mode. Once selected, press the **ENTER** button to setup or automatically exit menu mode without any change after 60 seconds. To go back to the functions without any change press the **MENU** button.

SEt Set Mode

Press the **MENU** button up to when the **SEt** is shown on the display. Pressing the **ENTER** button, Use the **DOWN** and **UP** button to select the **1-1** or **1-2** or **2-2** mode. Once selected, press the **ENTER** button to setup or automatically exit menu mode without any change after 60 seconds. To go back to the functions without any change press the **MENU** button.

Shnd Show Mode

Press the **MENU** button up to when the **Shnd** is shown on the display. Pressing the

ENTER button, Use the **DOWN** and **UP** button to select the **Sh 0** (Random show) or **Sh 1** (show 1) or **Sh 2** (Show 2) or ... or **Sh 8** (show8). Once selected, press the **ENTER** button to store or automatically exit menu mode without any change after 60 seconds. To go back to the functions without any change press the **MENU** button

MANU Manual Mode

Press the **MENU** button up to when the **MANU** is shown on the display. Pressing the **ENTER** button, Use the **DOWN** and **UP** button to select the **numb** (number) or **LETT** (letter). Once selected, **numb**, Pressing the **ENTER** button, Use the **DOWN** and **UP** button to select the **PAR 0** or...or **PAR 9**, Once selected, press the **ENTER** button to store. If you select **LETT**, Pressing the **ENTER** button, Use the **DOWN** and **UP** button to select the **PAR 0** or...or **PAR 9**, Once selected, press the **ENTER** button to setup or automatically exit menu mode without any change after 60 seconds. To go back to the functions without any change press the **MENU** button

SOUn Sound

Press the **MENU** button up to when the **SOUn** is shown on the display. Pressing the **ENTER** button, Use the **DOWN** and **UP** button to select the **on** (sound on) or **off** (sound off). Once selected, press the **ENTER** button to setup or automatically exit menu mode without any change after 60 seconds. To go back to the functions without any change press the **MENU** button.

BLND Blackout mode

Press the **MENU** button up to when the **BLND** is shown on the display. Pressing the **ENTER** button, Use the **DOWN** and **UP** button to select the **825** (blackout) or **no** (normal). Once selected, press the **ENTER** button to setup or automatically exit menu mode without any change after 60 seconds. To go back to the functions without any change press the **MENU** button.

LED LED display

Press the **MENU** button up to when the **LED** is shown on the display. Pressing the

ENTER button and the display will blink. Use the **DOWN** and **UP** button to select **on** (display on) or **off** (display off) mode. Once selected, press the **ENTER** button to setup or exit menu mode without any change after 60 seconds. Back to the functions without any change press the **MENU** button again.

DISP Display Inverse

Press the **MENU** button until **DISP** is blinking on the display. Press the **ENTER** button to select **DISP** (normal) or **DISIP** (inverse). Back to the functions without any change press the **MENU** button.

TEST Self-Test

Press the **MENU** button up to when the **TEST** is blinking on the display. Pressing **ENTER** button and the unit will run the built-in programmer for self-test. To go back to the functions press the **MENU** button.

Fhrs Fixture Hours

Press the **MENU** button up to when the **Fhrs** is blinking on the display. Pressing **ENTER** button and the display will show the number of working hours of the unit. To go back to the functions press the **MENU** button.

VER Software version

Press the **MENU** button up to when the **VER** is blinking on the display. Pressing **ENTER** button and the display will show the version of software of the unit. To go back to the functions press the **MENU** button.

5. How To Control The Unit

You can operate the unit in three ways:

1. By master/slave built-in preprogram function
2. By easy controller
3. By DMX controller