

www.joybold.com

JOYBOLD
PRODUCT
CATALOGUE

2022

 浙江金棒运动器材有限公司
ZHEJIANG JINBANG SPORTS EQUIPMENT CO.,LTD.

Add: No. 1, Juxian Road, Huzhen Town,
Jinyun County, Zhejiang Province

Tel: 0086-578-355 6499

Fax: 0086-578-357 0999

E-mail: sales@joybold.com

<https://kingbonn.en.alibaba.com>





ABOUT JOYBOLD



Established in 2004, Zhejiang Jinbang Sports Equipment Co., Ltd is located at southeast of Zhejiang province and close to Ningbo, with very convenient transportation access.

As a professional manufacturer and exporter of sports equipment, we specialize in manufacturing products including E-scooter, stunt scooter, massage gun, etc. With more than 1,500 employees and over 50 R&D engineers, we have the capability to develop new products ourselves and are releasing new products each year.

Our factory has a building area of more than 80,000 square meters, consisting of plastic injection workshop, PU coating workshop, powder coating workshop, liquid coating workshop, metal welding workshop, molding workshop, tooling workshop, intelligent warehouse, testing lab, etc. Most parts are made in house by ourselves.

With well-equipped facilities, advanced management system, and excellent quality control capability, we have successfully passed certification of ISO9001/14001/45001, ICTI, BSCI, GS, FCCA, CVS, and are committed to bringing happiness and health to people by providing high quality products.

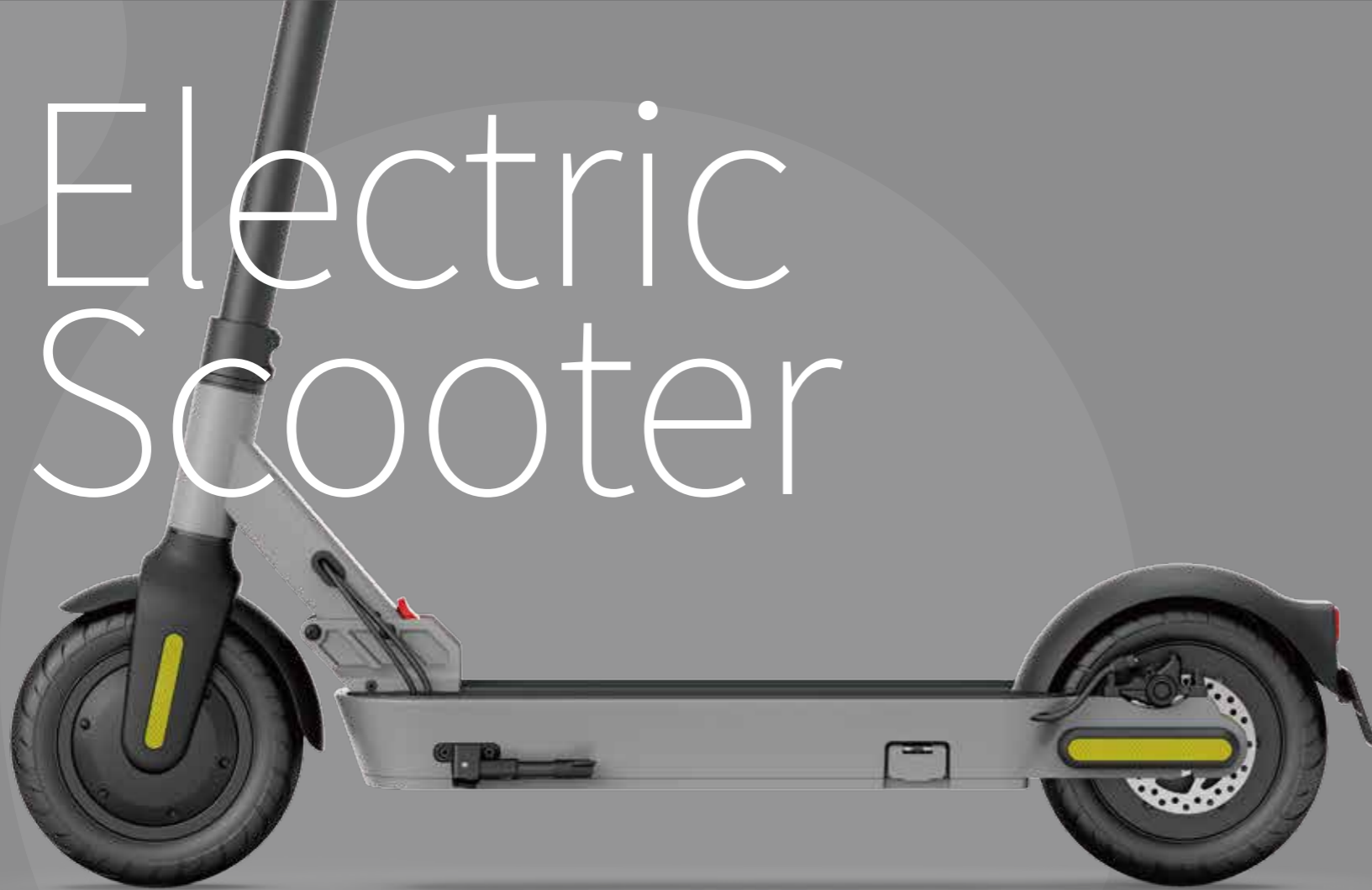
Warmly welcome to visit our company.



JOYBOLD HONOUR



Electric Scooter



Item: **JB520**

Specification:

- ◎ Material: Aluminum+Mg+Plastic+ Electrical Appliance
- ◎ Product size:1180*430*1190mm
- ◎ Folding size:1190*430*430mm
- ◎ Max Load:100KG
- ◎ Use age:14+
- ◎ Max Speed:25KM/H
- ◎ Tyre:10 inches
- ◎ Rated Power:350W
- ◎ Battery Voltage:36V
- ◎ Battery Capacity:7.8AH/10AH
- ◎ Endurance:35KM



Item: **JB500**

Specification:

- ◎ Material:AL6061/ADC12
- ◎ Size:
Unfolding Size:L1200*W440*H1160mm
Folding Size:L1160*W440*H420mm
- ◎ Motor: 36V 350W
- ◎ Tyre:8.5"x1.75
- ◎ Battery:7.5AH
- ◎ Charger:1.7A 42V
- ◎ Charging time:4.5H
- ◎ Brake:electronic brake+ front drum brake
- ◎ Light:
Head Light:K-mark
Rear Light:Z-mark
- ◎ Max Load:100KG
- ◎ Max Speed:25KM/H
- ◎ Range:Approx up to 20KM and above
- ◎ Max Climbing Angle:Approx 14°
- ◎ Water Resistance:IP54
- ◎ Traversable Terrain: City road
- ◎ Recommend Age:14+"



Item: **JB502**

Specification:

- ◎ Material:AL6061/Q195 Pipe
- ◎ Size:
Unfolding Size:L1070*W440*H1186mm
Folding Size:L1070*W440*H500mm
- ◎ Motor: 36V 350W
- ◎ Tyre:8.5"x1.75
- ◎ Battery:7.8AH
- ◎ Charger:2A 42V
- ◎ Charging time:4H
- ◎ Brake:electronic brake+front disc brake+rear disc brake
- ◎ Light:
Head Light:K-mark
Rear Light:Z-mark
- ◎ Max Load:100KG
- ◎ Max Speed:25KM/H
- ◎ Range:Approx up to 20-25KM
- ◎ Max Climbing Angle:Approx 15°
- ◎ Water Resistance:IP54
- ◎ Traversable Terrain: City and bumpy roads
- ◎ Recommend Age:14+"



Item: **JB516**

Specification:

- ◎ Material: Aluminum+Plastic+Electrical Appliance
- ◎ Product size:1070*440*1175mm
- ◎ Folding size:1070*450*520mm
- ◎ Max Load:100KG
- ◎ Use age:16+
- ◎ Max Speed:20KM/H
- ◎ Tyre:8.5 inches
- ◎ Rated Power:350W
- ◎ Battery Voltage:36V
- ◎ Battery Capacity:7.8AH
- ◎ Endurance:30KM



Item: **JB525**

Specification:

- ◎ Material: Aluminum+Plastic+Electrical Appliance
- ◎ Product size:825*390*870mm
- ◎ Folding size:825*390*352mm
- ◎ Max Load:50KG
- ◎ Use age:8+
- ◎ Max Speed:12KM/H
- ◎ Tyre:6.5 inches
- ◎ Rated Power:150W
- ◎ Battery Voltage:24V
- ◎ Battery Capacity:2.6AH
- ◎ Endurance:7KM

Electric Bicycle



Item: **JBS1000**



Specification:

- ◎ Material:AL6061
- ◎ Size:
 - Unfolding Size:L1540*W580*H1110mm
 - Folding Size:L900*W260*H240mm
- ◎ Motor: 36V 250W
- ◎ Tyre:20"x1.75
- ◎ Battery:7.5AH
- ◎ Charger:2A 42V
- ◎ Charging time:3-5H

- ◎ Brake:electronic brake+front disc brake+rear disc brake
- ◎ Head Light:E-mark
- ◎ Max Speed:32KM/H
- ◎ Range:Approx up to 40KM and above
- ◎ Max Climbing Angle:Approx up to 25° or more
- ◎ Water Resistance:IPX6
- ◎ Traversable Terrain: City road
- ◎ Recommend Age:18+*

Item: **JBS1001**

Specification:

- ◎ Material:AL6061
- ◎ Size:L1900*W680*H1025mm
- ◎ Motor: 48V 500W
- ◎ Tyre:26"x4.0
- ◎ Battery:16AH
- ◎ Charger:3A
- ◎ Brake:electronic brake+front disc
brake+rear disc brake
- ◎ Head Light:E-mark
- ◎ Max Speed:40KM/H
- ◎ Range:Approx up to 60KM and above
- ◎ Max Climbing Angle:Approx up to 25° or more
- ◎ Water Resistance:IPX6
- ◎ Traversable Terrain: City road/Mountain
- ◎ Recommend Age:18+"

Item: **JBS1001-1**

Specification:

- ◎ Material:AL6061
- ◎ Size:L1770*W680*H1076mm
- ◎ Motor: 48V 500W
- ◎ Tyre:27.5"x3.0
- ◎ Battery:11AH
- ◎ Charger:3A
- ◎ Brake:electronic brake+front disc
brake+rear disc brake
- ◎ Head Light:E-mark
- ◎ Max Speed:40KM/H
- ◎ Range:Approx up to 60KM and above
- ◎ Max Climbing Angle:Approx up to 25° or more
- ◎ Water Resistance:IPX6
- ◎ Traversable Terrain: City road/Mountain
- ◎ Recommend Age:18+"

Massage Gun



Item: **JB8015**

Specification:

- ◎ Battery: Lithium 4 cells 16.8V 2000mA, 4-5 hours running/ 3 hours charging
- ◎ Shell: ABS+PC
- ◎ Speed: 1200/1500/1800/2100/2400/2700 RPM, 6 Level adjustment
- ◎ Amplitude: 12mm
- ◎ Massage head: 4 different heads
- ◎ Maximum Pushing Power (N):130 (N)
- ◎ Charging Mode: Type-C
- ◎ Display: LCD
- ◎ Packing: EVA suitcase + Color box
- ◎ Motor: Brushless 55 Motor
- ◎ Size: 245*166*60mm



UN38.3 MSDS





Item: JB8001

Specification:

- ◎ Battery: Lithium 6 cells 24V 2000mA, 4 hours running/ 3 hours charging
- ◎ Shell: ABS+PC
- ◎ Speed: 1100/1800/2400 RPM, 3 Level adjustment
- ◎ Amplitude: 9mm
- ◎ Massage head: 4 different heads
- ◎ Maximum Pushing Power (N): 110 (N)
- ◎ Charging Mode: DC
- ◎ Display: LCD
- ◎ Packing: Color Box or EVA suitcase



Item: JB8001D

Specification:

- ◎ Battery: Lithium 6 cells 24V 2000mA, 4 hours running/ 3 hours charging
- ◎ Shell: ABS+PC
- ◎ Speed: 1200-2700 RPM, 6, 20 or 30 Level adjustment
- ◎ Amplitude: 9mm
- ◎ Massage head: 4 different heads
- ◎ Maximum Pushing Power (N): 110 (N)
- ◎ Charging Mode: DC
- ◎ Display: LCD
- ◎ Packing: Color Box or EVA suitcase



Item: JB8006

Specification:

- ◎ Battery: Lithium 6 cells 24V 2000mA, 4 hours running/ 3 hours charging
- ◎ Shell: ABS+PC
- ◎ Speed: 1200-2700 RPM, 6 Level adjustment
- ◎ Amplitude: 9mm
- ◎ Massage head: 4 different heads
- ◎ Maximum Pushing Power (N): 110 (N)
- ◎ Charging Mode: DC
- ◎ Display: LCD
- ◎ Packing: Color Box or EVA suitcase





Item: JB8008

Specification:

- ⊙ Battery: Lithium 3 cells 12V 2000mA, 4 hours running/ 3 hours charging
- ⊙ Shell: ABS+PC
- ⊙ Speed: 1200/1500/1800/2100/2400 RPM, 5 Level adjustment
- ⊙ Amplitude: 6mm
- ⊙ Massage head: 4 different heads
- ⊙ Maximum Pushing Power (N): 80 (N)
- ⊙ Charging Mode: DC
- ⊙ Display: LCD
- ⊙ Packing: Color Box or EVA suitcase



UN38.3 MSDS



Item: JB8010

Specification:

- ⊙ Battery: Lithium 6 cells 24V 2000mA, 4 hours running/ 3 hours charging
- ⊙ Shell: ABS+PC
- ⊙ Speed: 1500/1800/2100/2400/2700 RPM, 5 Level adjustment
- ⊙ Amplitude: 9mm
- ⊙ Massage head: 4 different heads
- ⊙ Maximum Pushing Power (N): 110 (N)
- ⊙ Charging Mode: DC
- ⊙ Display: LCD
- ⊙ Packing: Color Box or EVA suitcase



UN38.3 MSDS



Item: **JB8011**

Specification:

- ◎ Battery: Lithium 3 cells 12V 2000mA, 4 hours running/ 3 hours charging
- ◎ Shell: ABS+PC
- ◎ Speed: 1500/1800/2100/2400 RPM, 4 Level adjustment
- ◎ Amplitude: 6mm
- ◎ Massage head: 4 different heads
- ◎ Maximum Pushing Power (N): 80 (N)
- ◎ Charging Mode: Type-C
- ◎ Display: LCD
- ◎ Packing: Color Box



UN38.3 MSDS



Item: **JB8018**

Specification:

- ◎ Battery: Lithium 3 cells 12V 2400mA, 4-5 hours running/ 4-5 hours charging
- ◎ Shell: ABS+PC
- ◎ Speed: 3000/4000/5000 RPM, 3 Level adjustment
- ◎ Charging Mode: Type-C
- ◎ Display: LCD
- ◎ Packing: Color Box
- ◎ Size: Φ93X90 mm



UN38.3 MSDS



Item: JB8030

Specification:

- ⊙ Battery: Lithium 3 cells 12V 2000mA, 4 hours running/ 3 hours charging
- ⊙ Shell: ABS+PC
- ⊙ Speed: 1500/1800/2100/2400 RPM, 4 Level adjustment
- ⊙ Amplitude: 6mm
- ⊙ Massage head: 4 different heads
- ⊙ Maximum Pushing Power (N): 80 (N)
- ⊙ Charging Mode: Type-C
- ⊙ Display: LCD
- ⊙ Packing: Color Box



UN38.3 MSDS



Item: JB8501

Specification:

- ⊙ Battery: Lithium 2 cells 7.4V 2000mA, 2.5 hours running/ 2 hours charging
- ⊙ Shell: ABS+PC
- ⊙ Speed: 1500/2000/2500 RPM, 3 Level adjustment
- ⊙ Amplitude: 6mm
- ⊙ Massage head: 4 different heads
- ⊙ Maximum Pushing Power (N): 50 (N)
- ⊙ Charging Mode: Type-C
- ⊙ Display: LCD
- ⊙ Packing: Color Box
- ⊙ Motor: Brushless 30 Motor
- ⊙ Size: 160*80*38mm



UN38.3 MSDS



Item: JB8502

Specification:

- ⊙ Battery: Lithium 2 cells 7.4V 2000mA, 2.5 hours running/ 2 hours charging
- ⊙ Shell: ABS+PC
- ⊙ Speed: 1500/2000/2500 RPM, 3 Level adjustment
- ⊙ Amplitude: 6mm
- ⊙ Massage head: 4 different heads
- ⊙ Maximum Pushing Power (N): 50 (N)
- ⊙ Charging Mode: Type-C
- ⊙ Display: LCD
- ⊙ Packing: Color Box
- ⊙ Motor: Brushless 30 Motor
- ⊙ Size: 100*50*40



UN38.3 MSDS



Item: JB8503

Specification:

- ⊙ Battery: Lithium 2 cells 7.4V 2000mA, 2.5 hours running/ 2 hours charging
- ⊙ Shell: ABS+PC
- ⊙ Speed: 1500/2000/2500 RPM, 3 Level adjustment
- ⊙ Amplitude: 6mm
- ⊙ Massage head: 4 different heads
- ⊙ Maximum Pushing Power (N): 50 (N)
- ⊙ Charging Mode: Type-C
- ⊙ Display: LCD
- ⊙ Packing: Color Box
- ⊙ Motor: Brushless 30 Motor
- ⊙ Size: 147*115*40mm



UN38.3 MSDS

Stunt Scooter



Item: **JB290F**

Specification:

- ◎ Y style bar, Powder Coated for High Scratch Resistance 570H*510W
- ◎ TPR Hand Grips with Nylon Bar Plugs.
- ◎ Four bolt Clamp.
- Threadless headset with aluminum fork
- ◎ 6061-T6 Heat Treated Aluminum Deck(510*115mm) chromed neo
- ◎ 88A 110mm Aluminum Wheels
- ◎ high grade ABEC-9 Bearings ;
- ◎ Manganese Steel Fender brake for strength and durability.
- ◎ Color box: L68*W12.5*H52*H18cm



Item: **JB283A**

Specification:

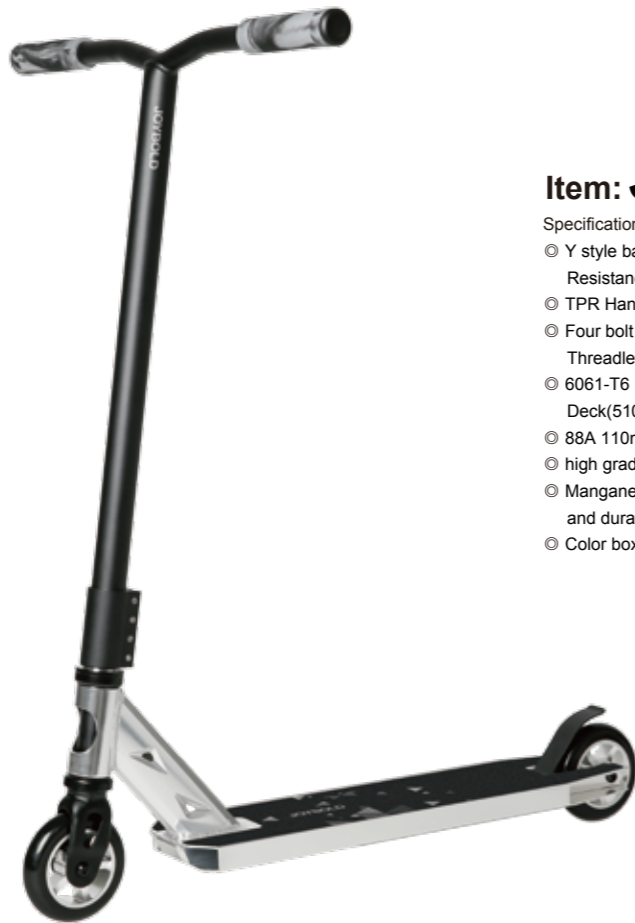
- ◎ Y style bar, Powder Coated for High Scratch Resistance 550H*455W
- ◎ TPR Hand Grips with Nylon Bar Plugs.
- ◎ Three bolt Clamp.
- Threadless headset with steel fork
- ◎ 6061-T6 Heat Treated Aluminum Deck(500*110mm) ANODISING
- ◎ 88A 110mm Aluminum Wheels
- ◎ high grade ABEC-9 Bearings
- ◎ Manganese Steel Fender brake for strength and durability.
- ◎ Color box: L68*W10.7*H49*H15cm"



Item: **JB283D**

Specification:

- ◎ Steel handle bar, powder coated for high scratch resistance. 640*580mm
- ◎ TPR Hand Grips with Nylon Bar Plugs.
- ◎ Three bolt Clamp.
- Threadless headset with aluminum fork
- ◎ 6061-T6 Heat Treated aluminum Deck(500*110mm) CHROMED TITANIUM GOLD Intergrated forging neck
- ◎ 88A 110mm Aluminum Wheels
- ◎ high grade ABEC-9 Bearings ;
- ◎ Manganese Steel Fender brake for strength and durability
- ◎ Color box: L70.5*W12*H57.5*H19cm



Item: **JB290A**

Specification:

- ◎ Y style bar, Powder Coated for High Scratch Resistance 570H*510W
- ◎ TPR Hand Grips with Nylon Bar Plugs.
- ◎ Four bolt Clamp.
Threadless headset with a steel fork
- ◎ 6061-T6 Heat Treated Aluminum Deck(510*115mm) ANODISING
- ◎ 88A 110mm Aluminum Wheels
- ◎ high grade ABEC-9 Bearings ;
- ◎ Manganese Steel Fender brake for strength and durability
- ◎ Color box: L68*W12.5*H52*H18cm"



Item: **JB281A**

Specification:

- ◎ Steel Alloy Handle Bar with new locking design, powder coated for high scratch resistance.
- ◎ TPR Hand Grips with Nylon Bar Plugs.
- ◎ Forged Double Bolt Aluminum Clamp.
Threaded Headset Threaded Steel Ford.
- ◎ Heat Treated Integrated 6061 Aluminum Deck(432*110mm)
- ◎ PP Core+88A PU Tyres(100*24mm)
- ◎ ABEC-7 Bearing.
- ◎ Manganese Steel Fender Brake for strength and durability.
Flex type easy to stop the scooter.
- ◎ Color Box: L64*W11*H47.5*H14.5cm



Item: JB246G

Specification:

- ◎ Steel Alloy Hande Bar with an innovative cross-bar design, powder coated for high scratch resistance
- ◎ TPR Hand Grips with Nylon Bar Plugs
- ◎ Forged Double Bolt Aluminum Glamp. Threaded Headset for Threaded steel Fork.
- ◎ Heat Treated Integrated 6061 Aluminum Deck(480*100mm)
- ◎ Extra strength Nylon mix Fiber solid whee(100*24mm) 88A PU tyres cast on.
- ◎ ABEC-7 Bearing
- ◎ Manganese Steel Fender Brake for strength and durability. Flex type easy to stop the scooter
- ◎ Color Box: L67.5*W10*H59*H15cm



Item: JB293A

Specification:

- ◎ Steel handle bar with new locking design , powder coated for high scratch resistance
- ◎ TPE Hand Grips with Nylon Bar Plugs.
- ◎ Triple Bolt Alu Clamp For Steel Fork.
- ◎ Semi Threadless Headset For Steel Fork
- ◎ Heat Trade 6061 Alu Deck (510*110mm).
- ◎ Alu Core + 88A pu Tyres (110*24 mm) bec-7 bearing
- ◎ Manganese Steel Fender brake for strength and durability



Item: **JB293M**

Specification:

- ◎ Steel seagull handle bar , powder coated for high scratch resistance
- ◎ TPE Hand Grips with Nylon Bar Plugs.
- ◎ Triple Bolt Alu Clamp.
- ◎ Full Threadless Headset For Steel Fork
- ◎ Heat Trade 6061 Alu Deck (505*120mm).
- ◎ Alu Core + 88A pu Tyres (110*24 mm) abec-9 bearing
- ◎ Manganese Steel Fender brake for strength and durability



Item: **JB293P**

Specification:

- ◎ Steel handle bar, powder coated for high scratch resistance 570*610mm
- ◎ TPR Hand Grips with Nylon Bar Plugs.
- ◎ Three bolt Clamp.
Threadless headset with aluminum fork
- ◎ 6061-T6 Heat Treated aluminum Deck(510*120mm)
CHROMED TITANIUM GOLD
Intergrated forging neck
- ◎ 88A 110mm Aluminum Wheels
- ◎ high grade ABEC-9 Bearings ;
- ◎ Manganese Steel Fender brake for strength and durability
- ◎ Color box: L70.5*W12*H57.5*H19cm



Item: JB223A

COMPONENTS:

- ◎ 80% Aluminum, 20% Steel
- ◎ Grip: Soft Foam
- ◎ T-bar: Aluminum
- ◎ Handle Bar: Aluminum
- ◎ Stem: Aluminum
- ◎ Connector: Aluminum
- ◎ Fork: Steel
- ◎ Deck: Aluminum: 550*140mm
- ◎ Brake: Steel
- ◎ Wheel: PP Core+PU Tyre, 200*40mm
- ◎ Box size: 79*15*30cm
- ◎ Carton Size: 81*32*32cm/2pcs



Item: JB251

COMPONENTS:

- ◎ 40% Aluminum, 60% Steel
- ◎ Grip: Soft Foam
- ◎ T-bar: Steel
- ◎ Handle Bar: Steel
- ◎ Stem: Steel
- ◎ Connector: Steel
- ◎ Fork: Steel
- ◎ Deck: Aluminum 550*115mm
- ◎ Brake: Steel
- ◎ Wheel: PP Core+PU Tyre, 200*40mm
- ◎ Box size: 83*13*30cm
- ◎ Carton Size: 85*27*32cm

Flashing Roller

Flashing roller is a fashionable product based on nice concepts. It can fulfil quick size adjustment therefore more convenient to use. One size fits all!

It can provide same function as roller skates while no need to take off shoes before skating on them, which makes it easier to wear and safer to use. Besides, you do not need to take them off even when going up and down stairs.

LED can be added into wheels so that they can flash by keeping wheels turning instead of using battery. Children would like it so much when skating on them.



HOW TO USE YOUR FLASHING ROLLERS:

Please make sure the flashing rollers are secured firmly on each foot before skating on them. Following are instructions on how to use them properly:



1 Firstly step your left foot ahead, lift up the front part of the left foot and keep the heel on the ground.

2 Push your right foot against the ground to start moving. Then use your left foot and right foot alternatively to provide thrust forward for skating.

3 Always Keep your legs in alignment and body leaning forward during skating.

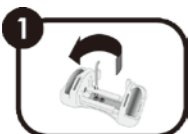
JB111

Bracket: PP Plastic, One size fits all, size could be adjustable.

Wheel: PVC wheel with 3-Front LED flashing lights, size: 70*24mm

Bearing: High speed carbon steel ABEC-5

Hardware: Iron metal plate with black zinc processed, never rust."



1 Loosen holding screws with the allen key supplied.



2 Slide the sections apart until your shoe fits in the space.



3 Place shoe firmly in the space and slide the sections closed to grip the shoe tightly.



4 Remove the shoe and tighten the holding screws.



5 Place your foot into the skate and hook and tighten the strap.

JB111-A

Bracket: PP Plastic, One size fits all, size could be adjustable.

Wheel: PU wheel with 3-Front LED flashing lights, size: 70*24mm

Bearing: High speed carbon steel ABEC-5

Hardware: Iron metal plate with black zinc processed, never rust."



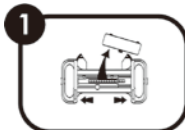
JB112

Bracket: PP Plastic, One size fits all, size could be adjustable.

Wheel: PVC wheel with 3-Front LED flashing lights, size: 70*24mm

Bearing: High speed carbon steel ABEC-5

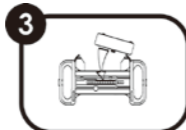
Hardware: Iron metal plate with black zinc processed, never rust



1 Remove adjustment cap & slide the street glider apart until large enough to fit shoe.



2 Place shoe on the street glider & slide the sides to grip the shoe.



3 Remove shoe & replace the size adjustment cap.



4 Place shoe back on the street glider, attach buckle & tighten. repeat for other shoe.

JB112-A

Bracket: PP Plastic, One size fits all, size could be adjustable.

Wheel: PU wheel with 3-Front LED flashing lights, size: 70*24mm

Bearing: High speed carbon steel ABEC-5

Hardware: Iron metal plate with black zinc processed, never rust



JB103

Bracket: PP Plastic, One size fits all, size could be adjustable.
Wheel: PU wheel with 3-Front LED flashing lights, size: 70*24mm
Bearing: High speed carbon steel ABEC-5
Easy to adjust any size you want.



JB166

Upper Lining: Mesh+EVA+Velet
Outer Shell: PP
Buffer: TPR
Elastic base: Nylon
Anti-slip bottom: TPR
Box size: 40*40*12.5cm
Carton size: 51.5*41.5*42cm/4pcs





HT-Bike

JB902

ABS for the shell
 PU + EVA seat with height adjustable
 With bicycle pedal
 Magnet resistance system
 Product size:69(L)*83(W)*58(H)
 Fold size: 60(L)*10(W)*58(H)
 Max Load 120KGS
 Customized color available



Accessories



W-100-001



W-100-002



W-100-003



W-100-004



W-100-005



W-110-001



W-110-002



W-110-003



W-110-004



W-110-005

