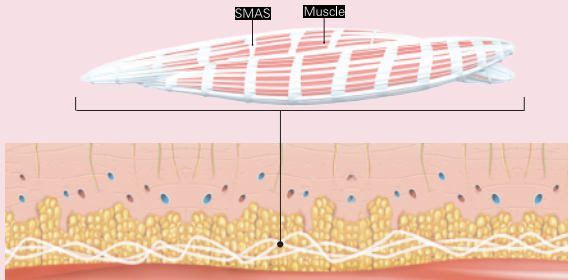


Product overview

Welcome to use Hello skin beauty instrument, it has the effect of face lifting, firming and delaying aging which is the first choice for modern women to be ignored by years!



Technical principle



- **Improve the epidermis of skin**

HELLO SKIN puts energy into the firming depths of skin during operation, energy releases heat from the inside and outside, accelerating the blood circulation and metabolism of the epidermis, to improve the problems of skin appearing black, yellow and so on.

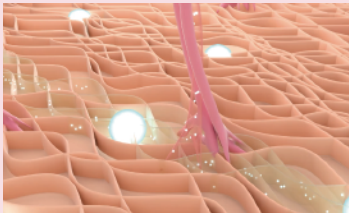
- Accelerate collagen regeneration



The energy point acts on the skin and accelerates the regeneration of the collagen cells so as to reshape the fresh, tender and white skin.

- Reshape the supporting force for Smas

Under the effect of energy, Smas layer continuously produces new fascia cells, which makes the fascia layer rejuvenated



Instrumental advantages

1 New technique

HELLO SKIN is a new technology product developed by Japan in accordance with American technology.



2 Free consumable material

HELLO SKIN applies a new generation of focusing chips from the United States, it can be used until the product out of order, without changing the operating head.



3 One probe achieves three depths

HELLO SKIN uses new technology, one probe achieved three depths.



4 Safe and non-invasive, without recovery period

Hello skin with safe operation and no recovery period, you can go to work or shopping after operation.



Instrument parameter



Product name:Hello Skin	Packing:carton packing	Model:H-022
Packing size:310*210*125mm	Operating head: one	Running rate:55W
Product size:230*105*98mm	Applicable voltage:AC90-240V	

Product diagram



Host



Handle



Depth adjustment



Adjust operating rate



color screen



ON/OFF

System interface

Depth adjustment

ON

color screen

Adjust operating rate

Depth display



Operation procedure



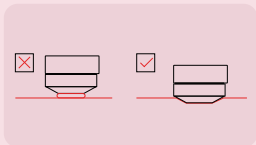
- 1** clean operating positions



- 2** After the power on, press the button in the middle of the host (see the Figure).



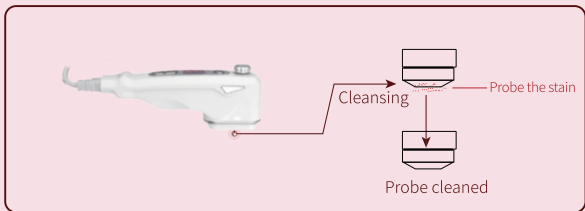
- 3** After starting, adjust the depth and energy of the probe at the top of the handle, coated with medium to operate.(as shown) , adjusting the energy from lowest level at the beginning. The energy is 0–9J. There is a round knob at the top of the handle to adjust the dotting depth. The maximum depth is 4.5mm.



- 4** Smearing medium in the operating parts and above the probe, the probe should be close to the skin in the operation process, with the medium absorbed by the skin, it is necessary to immediately complement the medium.



- 5 Operation time can be determined according to the facial conditions, and the average facial operation time is 30-45 minutes.



- 6 After the operation, clean the face and operating probe.

Operation method



Neck

(1) The probe starts from the upper clavicle and is raised upwards along the neck to the lower jaw, and from the chin position to the root of the ear, near the lymph nodes, which is set by the individual. Remember not to operate on the Adams apple.



Face

(2) The probe is close to the skin from the lower jaw and slowly moves to the zygomatic region. Raising it from the nose to the position near the lower point of the arc of the apple muscle, near the temple. Set according to personal circumstances.



eyes

(3) (prohibiting operating on eye socket) Probe from fixed eye angles position slowly pulling up near to temple, and then from the eyelid to the near the hairline position, except operating on upper eyelid.



forehead

(4) Probe from the brow to slowly pull near to the hairline, from near the eyebrow to the hairline, eyebrow tail to the hairline, horizontal operation from ophryon to the temple, moving from the middle part of your forehead to temple. Not to operate on eyebrows.

- After the operation, cleaning face and immediately use compress mask or moisturizing mask, taking it in ten minutes, replenishing water in time when moisture on the facial mask is dry.

Note: if you need to operate on other parts of body, please consult the professionals.

Using taboo

Use this instrument carefully for any of the following symptoms. Consult a doctor or a professional before use. As detailed below:

- 1** Before using the instrument, you should clean the skin of the operation parts so as to prevent dirt from entering the skin with the ultrasonic or prevent the penetration of the ultrasonic. Please take off all the metal objects on your body before operation so as to avoid unexpected condition and affect the curative effect.
- 2** The medium is supposed to have a certain viscosity, which is conducive to better integration of ultrasound and the skin, to prevent the gap caused by reflection and adverse absorption of sound energy.
- 3** Operation time of each part is recommended for 30-45 minutes, depending on the size of the operation site and to choose the appropriate time.
- 4** Don't operate on the orbital parts and Adam's apple when using the instrument, as well as to avoid the wound area.
- 5** The product is not recommended for patients with malignant tumors, hemophilia or severe bleeding.
- 6** Patients who suffer from critical diseases, skin diseases and infectious diseases are supposed to carefully use the product.
- 7** Patients who suffer from serious diseases, heart disease, diabetes, psychiatric diseases and so on are supposed not to use this product.
- 8** Sites with vulnus, large-scale of the acne or pustule are not recommended for immediately use.
- 9** Hello skin can be used after 30 for those who injected hyaluronic acid, water needle etc.
- 10** Taking protective measures to protect your skin after use Hello skin.
- 11** Women are not allowed to operate this product during physiological periods.
- 12** The operation shall be avoided the parts which is made of prosthesis (metal prosthesis).
- 13** person whose skin is allergic is recommended to use this product one week after allergy ends.

Precautions

Strengthen moisturizing and sunscreen after operation

- 1** It is recommended to apply moisturizing mask at least 3-4 times a week, and drink not less than 2000cc (eight glasses of water) a day.
- 2** Eating light food, fruits and vegetables and with no spicy , do not smoke, drink or stay up late.
- 3** No shaking the probe as operating head contains super conducting liquid.
- 4** Always keep the operating area in a moist environment during the operation, and keeping the probe close to the skin.
- 5** Energy must be adjusted slowly from little to large, with best intensity for yourself, do not directly open to the maximum energy to operate, which may damage the skin (scald).

Instrument maintenance

- 1** Please clean it with water and keep it well every time after using it.
- 2** The equipment must be used plug with a foot and make sure that the instrument outlet is grounded.
- 3** To ensure that the equipment voltage is adaptive, and if the local power supply voltage is unstable, we recommend that users increase the power matching of the stabilized power supply.
- 4** For the purpose of operation and guarantee the normal service life of the equipment, please use the fittings supplied or recommended by the original manufacturer.
- 5** The equipment shall not be placed damp place or near the water source, nor be exposed directly to the place where the sun is shining.
- 6** Do not approach the equipment to a strong heat source, as it may affect the life and normal use.
- 7** Please pay attention to the skin where you need a certain degree of moisture, wiped with aquatic products or water to achieve the desired effect,products or water to achieve the desired effect.
- 8** Water, oil and other medium shall not penetrate into the equipment, and it can not be struck, beaten and thrown so as to avoid damage to the equipment. and thrown so as to avoid damage to the equipment.
- 9** Please switch off the power and clean the probe in time.
- 10** The warranty of the product is one year. The manufacturer is responsible for the maintenance, replacement of parts if it is not man-made damage during warranty period (customer shall pay freight back and forth, replacement parts and maintenance costs shall be paid by manufacturer).replacement
- 11** After the end of the warranty period, the manufacturer will keep in repair for the equipment lifelong (manufacturers only charges the cost price for replacement parts,without maintenance fees).
- 12** Don't clean it with anything containing alcohol.

Packing list



Host	one	Warranty card	one
Power line	one	Instruction	one
Gel	one	Certificate	one

Warranty card

Warranty card		
Product name:	Model:	Product Bar Code:
Date of Purchase:	Purchased at (Store):	Address (Tel):
Name of customer:	Contact information:	Warranty period:
Failure cause:	Repair content:	
Warranty Terms		
1.The apparatus with any quality problem caused by non-artificial damage will be replaced, but the apparatus without any quality problem will not be replaced.		
2.In case of any software fault, the apparatus may be repaired within 3 days, but will not be replace.		
3.The warranty period of the apparatus is one year (including the expiration date) calculated from the date of purchase.		
4.If the apparatus has never been started, we will not provide any warranty.		
Remark:		
Maintenance Hotline:		
Warranty Expiration Date:		