

PDT SKIN BEAUTY



User manual

WARNING

Dear users:

Thank you for choosing the apparatus designed and manufactured by the Company. In order to enable the product to function properly, we sincerely make the following recommendations:

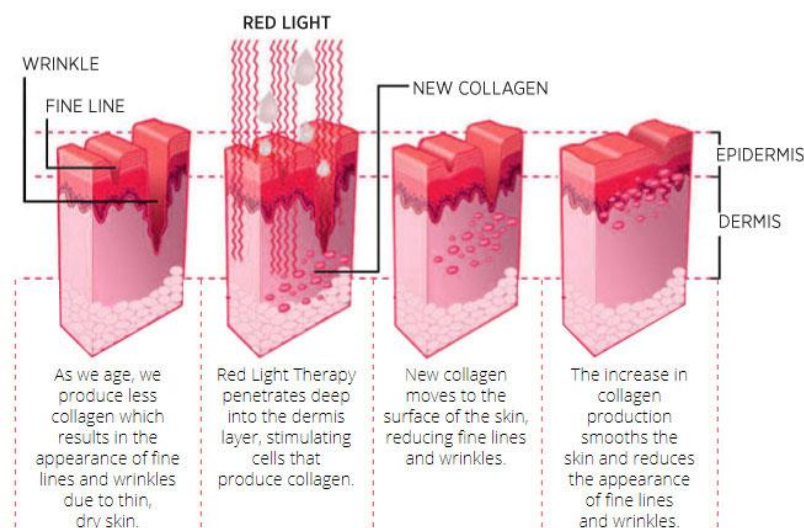
- ◆ Before using the apparatus, please carefully read this manual and properly store it for prompt reference to it in future.
- ◆ Please install, use and operate correctly according to the requirements in the manual.
- ◆ Do not disassemble this unit or modify any parts of it.
- ◆ It is strictly forbidden to open and remove the cover and disassemble the main machine, unless otherwise authorized by the Company.
- ◆ Non-professional personnel are strictly forbidden to implement any maintenance and modification.
- ◆ In event that any failure happens during operation, please contact us in time.

This product is not a medical device, and its intended use is not disease treatment!

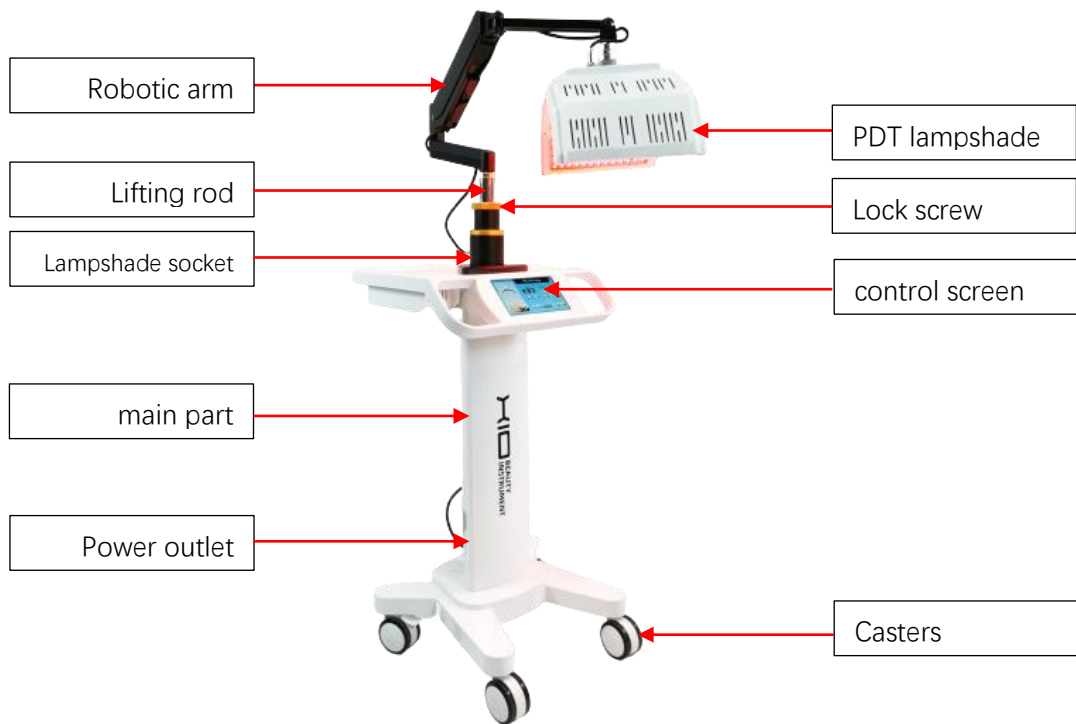
— . OVERVIEW:

PDT photodynamics is also called Photodynamic therapy. Photodynamics known as "magic light" is a kind of biologically active cold light that does not produce high heat. It uses low-energy pure light and touched light adjustment technology to care for the skin and The operation has the characteristics of natural mildness, remarkable curative effect, low risk, and no side effects. It is a skin care expert, suitable for all kinds of skin. Especially for severely allergic skin, acne skin and sub-health rehabilitation prevention and treatment has excellent curative effect. PDT photodynamic therapy is a new technology that uses the dynamic response of light to maintain and operate the skin, converts light energy into intracellular energy, accelerates cell growth, accelerates blood circulation, stimulates fibrous cell tissue to produce collagen, and increases skin Elasticity, repairing aging skin, acne-prone skin, lightening spots, lifting firmness, relieving sunburn and so on Plays an important role.

PDT emits light of a specific wavelength, penetrates the surface of the skin, reaches the subcutaneous fat layer, convert the light energy into intracellular energy, accelerate cell growth process, increases blood circulation, and 2nd stimulate fibroblasts to produce collagen. Easy to achieve ance removal, wrinkles removal, increase skin elasticity and restore skin vitality. It has been proven to be effective for the treatment of various aspects of aging of the skin. Multiple studies have shown the improvement of fine wrinkles, hyper.pigmentation and roughness. These results are respalded by the in crease in collagen production.



二 . Instrument introduction :



Introduction to instrument components





Operation interface introduction

☰ . SPECTRUM FUNCTION :



Red light can enhance the cells activity, promote cells metabolism, make skin excrete large number of collagen protein and fibre tissue to fill on their own; accelerate blood circulation, increase skin elasticity. Accelerate blood circulation, activate skin tissues, repair damaged skin, tendering skin and dispel crinkles, tighten pore, and proliferate collagen protein.



Blue light of 417nm wavelength acts on the skin surface ,react with caroline produced by propionibacterium ,kills propionibacterium directly ,does not damage any skin tissue,and solves the problem of acne muscle at root,For youthful bacteria,inhibit sebaceous glands,prevent wound infection, sedation and allergic skin is very helpful.



It uses wavelength of 1171nm LED and it makes Enhance blood circulation, activating cells, stimulate the cell excitability active role. Increasing the skin collagen fiber and elastic fibers avoiding the skin redness.



Wavelength 535nm ,neutralizing ,balancing and stable ,can reduce skin oil secretion,balance the proportion of water and oil,effectively relieve mental tension ,dredge lymph and edema.



Enhance the energy of new cells in order ,with a good effect on metabolism,balance secretion ,calm the skin and control oli .Strengthen the ability to protect of skin itself.Calm down, release stress, and cure sunburn.



Restrain the desire to eat. Bactericidal and anti-inflammatory. Renew skin, reduce wrinkles, especially useful in treating and repairing acne and acne-scars.accelerate the exfoliation of aging cuticle,remove yellowish dull,clean and tender like new life.



The wavelength is 1586nm, penetrates the deep layer of the skin, accelerates the metabolism of active tissues, breaks down stains, improves fine lines and relaxes the skin.

四 . WORKING PRINCIPLE :

Blo-Light Therapy Is the Interaction of light,delivered through Light Emitting Diodes(LEDs), to cause blo-stimulation on cell receptors.Blo-Light therapy encourages natural cell re-newal and healing. By stimulating these actions, damage caused by the sun, the environment natural aging and other external factors can be safely and painlessly remedied. Various studies around the world suggest that Blo-Light Therapy stimulates blood

and lymph circulation, decreases Inflammation, and Improves cellular metabolism and protein syntheses(collagen).



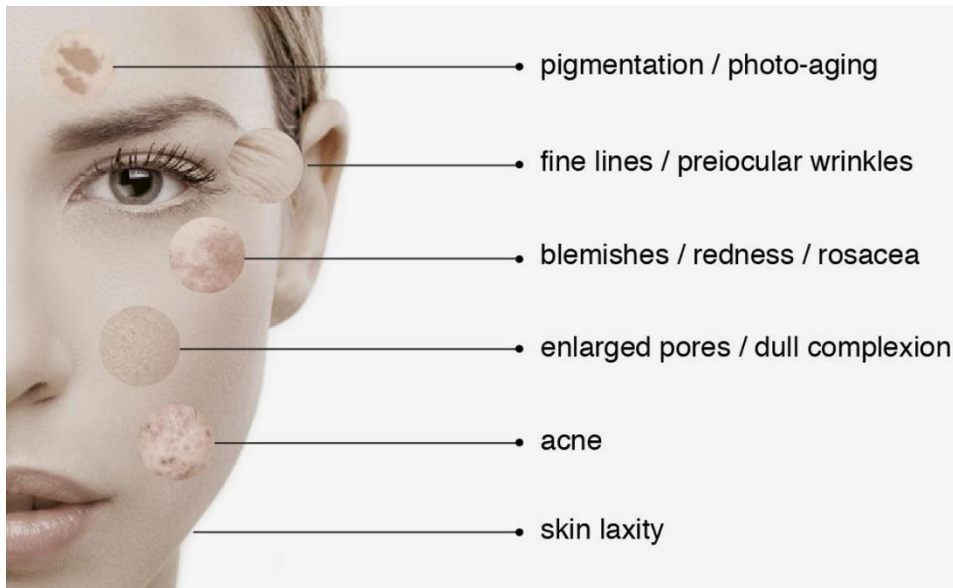
五 . FUNCTIONS&APPLICATIONS :

Treatments are less expensive than other light based therapies. The main benefit is a reduction in the appearance of fine lines, wrinkles, freckles, brown spots, scars and the amount of redness. In addition, the treatments are pain free with no downtime at all.

- Acne treatment
- Anti-aging, skin rejuvenation
- Improving lymph circulation
- Reducing fine lines, wrinkles, stretch marks
- Skin diseases
- Wound recovery
- Scalp care, anti-hair-loss, hair regrowth
- Accelerating absorption of cosmetics

六. PDT THERAPY ATTENTION:

- ◆ When the operator is not wearing protective glasses, please do not look directly at the lamp for a long time
- ◆ Guests should close their eyes when doing head or chest care, wear protective glasses or stick them on the face with cotton pads.
- ◆ Light irradiation local care time should be at least 15 minutes



七 . PARAMETER DESCRIPTION:

POWER : 200W

COLOUR: SEVEN COLOR

LAMP BEADS : 273PCS

SHELL MATERIAL : METAL

VOLTAGE : ACH0~240V

WAVELENGTH : 650NM

TIME: 1-60 MINUTES

PACKING : FLIGHT CASE

MEAS : 40*43*93CM

G.W : 24Kg

八.After-sale service and maintenance:

The term of maintaining guarantee is main device 1 year and spare part 3 months from the date of purchasing according to the receipt. (Expendable is not included in it.) Others not included in maintaining guarantee or over the time, we also supply to maintain and renew but need charges. Please contact with the dealer if need change of purchasing the parts and easily expendable products.

We won't supply maintaining guarantee if troubles as below:

Disassembling the machine by self;

Fall it without caution;

Lack of reasonable keeping and protect;

Not operate according to the user manual.

Expendable reasons

If changes of the design and specification of the machine, we will not notice you in addition.

If any queries, please feel free to contact with the local marketing company.

All in one, we will try our best to serve you and also need your fully cooperation. Thanks.

Product name :		Purchase date :	deadline :
Seller:		Add.:	Tel.:
Customer:		Add.:	Tel.:
Repair date	Reason of the fault	Repair content	
Maintain list			