

Coolx-360mini machine

User Manual



1. Safety Notice

1.1 Please don't disassemble the equipment or try to do some other operation, which haven't been indicated in our instruction. All the repairing work should be done by our admitted professional personnel

1.2 Please don't assemble or operate this equipment while you are near the water or your hands are wet. Notice that don't pour the liquid on it.

1.3 Please pull out the plug from the socket when you met such conditions as below. And in touch with professional maintenance Station.

- A. The equipment touched liquid
- B. The equipment has abnormal smell, smoking or loud and strong noise.
- C. Cable is broken
- D. The equipment is fallen down and broken

1.4 Please don't put anything on the cables, don't place the equipment at any place where someone can step on the cable.

1.5 Please pull out the power cable after using it for your safety

1.6 Don't put anything into the equipment's jack, otherwise it may cause fire or touch the electricity. If something enters the equipment, please don't pick it out by yourself, contract distributor or our company immediately

1.7 Please don't put the equipment on the anything that can't stand steadily, avoid it turns over and damage.

1.8 Please install the handle, in case of a power cut.

1.9 Our company has the right to modify the information in this introduction before notify! And keep the explanations right for the above.

2. Operation Notice



Before operation, please read the following content.

- 2.1 It is essential to make different setting according to specific treatment demand.
- 2.2 The application of The machine must never be painful and cause redness to the skin or leave marks.
- 2.3 Move the treatment heads slowly over the skin of the body or the face. Don't letting them stop in any one place on the skin.
- 2.4 Do not apply the device on children less than 7 years old. The treatment to children over 7 requires medical advice.
- 2.5 Do not use this device if suffering from a fever, inflammation, dermatitis (acne, eczema, herpes), warts, open or recently stitched wounds, Female physiology period , serious and progressive illnesses (cancer, AIDS, hepatitis, blood diseases, etc. or blood coagulation problems. Do not apply the device if you have or have had phlebitis, after veins surgery within the last two months, if you have varicose veins or tingling in your limbs, if you have any concerns consult a physician.
- 2.6 Never use the device on a pregnant woman.
- 2.7 The machine could be used on all external and healthy areas of the body except the eyes, throat, ears, glottis and the genital area.
- 2.8 Must not be applied inside the mouth, or on mucous membrane, or on nipples, or moles without medical advice.
- 2.9 Never use the device if you suffer from epilepsy. The device must not be used by any person suffering from mental illness.
- 2.10 In the case of long-term treatment with drugs such as anti-inflammation, anticoagulants, antibiotics or if your skin bruises at the slightest shock, ask advice of your doctor/physician before using.
- 2.11 Never apply to the body parts with jewelry or ring.
- 2.12 Regular use of The machine enhances well-being; it is better not to stop its use for a prolonged period of time. Not following operating instructions and usage recommendations may bring lesser results than expected. Do not use the device longer than the recommended time.
- 2.13 If your symptoms have no improvement, or if in any doubt on the use, consult your

doctor.

2.14 Effect may vary depending on your age, life habits (level of physical activity, diet, etc.).

2.15 The machine can be used after any plastic surgery only while following the instruction of the surgeon.

2.16 The machine is designed for professional use only, any personal use of this device is prohibited.

2.17 The Machine continuous working time shall not exceed 1 hours. The best way is cut the power off, let the machine have a rest for 20-30mins. After the machine have worked for a hour.

2.18 Never use the strong acid or strong base or alcohol clean the machine. (use physiological saline to clean machine.)

3. Summarize & Theory

Cryolipolysis (Coolsculpting) : a new, non-invasive way to gently and effectively reduce fat in targeted areas of the body that results in a noticeable, advanced-looking fat reduction in the treated areas. As triglyceride in fats will be converted into solid in particular low temperatures, it uses cooling technology to selectively target fat bulges and eliminate fat cells through a gradual process that does not harm the surrounding tissues, reduce unwanted fat, The contact cooling of the hand piece surface regulates the temperature of the skin and protects fine dermal structures, realizing the fast body-reshape effects !

Cryolipolysis handle: As triglyceride in fats will be converted into solid in particular low temperatures, It uses advanced cooling technology to selectively target fat bulges and eliminate fat cells through a gradual process that does not harm the surrounding tissues, reduce unwanted fat, When fat cells are exposed to precise cooling, they trigger a process of natural removal that gradually reduces the thickness of the fat layer. And The fat cells in the treated area are gently eliminated through the body's normal metabolism process, to eliminate unwanted fat.

4. Diagram of Accessories



Big cryo handle*1




Medium cryo handle*1



small cryo*1

ATTENTION:

1. To **avoid water leaking**, before installing the cryo handles, press  on both sides of the handle, you

will hear the sound which means the two pins  pop up, then the handle can be installed.



Here Share with yours as follows;

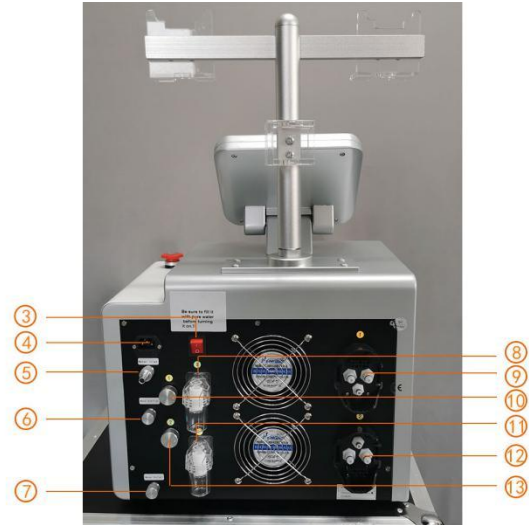
2. For the cryo machine, it need change the pure water or distilled water each month, in this way, it will help prolong the lifetime of water pump and also flow sensor; It just need insert the short connector pipe in the outlet water, then the water will push out from the machine;

Yours just do it according to the user manual how fill water, and how to pull out water from the machine among the water inlet, outlet and overflow connector

How to know enough water input?

Please observe water spilt , water spill automatically from the water spilt, means enough water input. Then draw out water pipe and water funnel.

how to install this machine ?



1. Touch screen
2. Emergency stop button:
Press—EMG stop
Cryo1 handle interface(Three frozen heads can be inserted at will)
3. The power switch
4. Power supply line jack
5. Distilled water inlet (please open the cover when you are filling water)
6. Overflow(please open the cover, fill water from water in hole till this hole come out water mean full)
7. Distilled water outlet
8. Cryo 1 Filter cup
9. Cryo 1 handle interface(Three frozen heads can be inserted at will)
10. Adjustable air valve (cryo 1)
11. Cryo 2 Filter cup
12. Cryo 2 handle interface(Three frozen heads can be inserted at will)
13. Adjustable air valve (cryo 2)

User interface



1. Please choose CRYO



2. By the host/handle interface to select the corresponding parameters. Click on the



need to adjust the position of the first, and then Through the add and subtract to set the parameters corresponding to probe the hot and cold length and pattern

to add and subtract parameters.  said frozen head cold heat setting mode.



Or through the main interface Settings button to choose into the background.

operation steps and matters needing attention

▼ 1. steps

(1) using frozen handle first blasting fat.

Clean the skin first, then smear the products onto the treated skin, please use anti-freeze when work with cryolipolysis handle. According the client's fat part status, adjust the Intensity and the Vacuum mode and Working time.

Use frozen handle continuous mode, cold first and then hot operation. After running for 40 minutes in the freezing mode. (The first time to operate the freezing head, the temperature of the freezing head should not be lower than -5° . No problem after use, then lower the temperature according to the situation.



Applicators for Large Area



FreezeCurve

Applicator of choice for flanks
Curved cup design allows for better placement and fit on curved or narrow parts of the body



Large size



FreezeFit

Ideal for longer vertical areas of fat
(i.e. abdomen and flanks)
Also suggested for the arms and inner thighs (OUS)

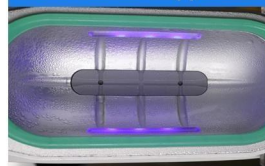


Small size

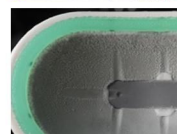
360° cooling of handpiece

1. The treating area is **100% frozen in full area**, instead of common frozen are 40% area.
2. Innovative all-dimension surrounding cooling applicators maintains more stable cooling temperatures while enhancing treatments results and decreasing application time.
3. Allowing the target temperature for fat cell apoptosis (fat cell death) to be reached at a more rapid rate. A FREEZE CONTOUR PLUS treatment corresponds **approximately 3 treatments** with typical fat freezing devices.
4. **Only 35 to 45 mins time each treatment** needed instead of 60 mins. Save about half treatment time to treat more customers.
5. The most suitable temperature levels from **5 centigrade to -10 centigrade adjustable**

Freeze contour Applicator



Frosting effect



FreezeMini
 A Cool New Way to Reduce Chin Fat and Jowls

- * Submental area
- * Knees
- * Underarms

Front **Back**

Chin
 Arm/Pit Fat
 Knees

- * Ideal for smaller bulges
- * Safely targets delicate, hard-to-reach areas
- * 35 minute cycle, Complete results in 1-2 visits
- * A smooth, contoured, youthful jawline and chin
- * No scalpels, injections, incisions, traumatic suction, or anesthesia

operating considerations:

- (1). Operating head when not in use, close related operation buttons.
- (2). The instrument is in use after a period of time (about 1 hours), best shutdown time off after 10 minutes, then use the reboot.
- (3). Before the operation can be advising clients to drink a cup of warm boiled water, it helps to speed up the skin blood circulation, beneficial to the body toxins out.
- (4). Frozen handle open before the operation, must ensure that the instrument inside the water tank with plenty of water

operation contraindication:

- (1). The part of the skin wound or scar advice to avoid;
- (2). Taking hormone drugs with caution;
- (3). Pregnancy and lactation, physiological period;
- In the body (4) to the sheet metal, etc. (such as cardiac pacemaker, etc.)
- (5). The body is extremely weak
- (6). Women with coil after three months
- (8). Female natural labor within three months after abdominal operation, cesarean section in the second half an abdominal operation
- (9). During is allergic skin
- (10). A serious disease, such as heart disease, gastric ulcer, serious tummy bug, duodenum ulcer, hypertension, diabetes, etc.
- (11). Medical plastic parts, or parts with artificial fill in material needs to consult a doctor.

Announcements on Clinical

Cryolipolysis system can freeze fat ,at the same time, it may have following risks:

- 1.Now research shows that individual who has skin without cold-resistance will have cold injury phenomenon when chose -5 degree or below. We suggest 5-0 degree for this kind of crowd.
- 2.For customers who use for the first time, they shouldn't choose below -8 ℃. -8 ℃ to -9 ℃ is suitable for fat layer thickness reaching 55mm or more .Please don't use it if the fat is less than 55mm, or it will have risk of cold injury.
- 3.If the liquid in anti-freezing membrane is too little (Normal is opening the package, you can see there is little liquid in bag or the membrane is very moist),please do not use. Abundant liquid can well protect the skin from been frostbite.
- 4.Please check if the anti-freezing membrane can fully cover the treatment area. The skin will have cold injury in 2 minutes without the membrane.
- 5.For sucking in the skin at the beginning of the treatment, you can choose vacuum pressure(40-70kpa), after 3 minutes, please adjust pressure to 30-40kpa, long time in high pressure(60-80kpa) during the treatment will increase the risk of skin blisters.
- 6.Coldinjury phenomenon:
Check the therapeutic part and you may have cold injury if the skin becomes harder or has lump, please use warm towel (42 degree) to cover the skin for 10 minutes. The treatment part will have blebs, skin will scab after the bubble bursts, keep cold injury wound clean and dry, apply frostbite cream for a few days and the wound would heal.
- 7.Another processing Method of deal with bleb:
Because of frostbite, if you have bleb, mild only prevention of infection. Severe should aseptic puncture fluid, coated with Basic Violet 3 of 1% -2% is ok.

ACCESSORIES LIST & TECHNICAL PARAMETER

Technical Parameter

Voltage	AC110V/220V 50-60Hz
Power	160W
Pressure output	0-80Kpa
Screen	8.4 inch touch screen
Cryolipolysis	-10 ℃
Pack size	63*53*59cm
Net weight	45KG

Accessories List

Description	Qty.
cryolipolysis Handle	3pcs
Anti freeze mask	5pcs
Bandage	2pcs
Iron holder	1 set of
Power cord	1pcs
Manual	1books