

# EMSLIM USE MANUAL



**When operating this product, please read the manual carefully first**

## WARNING

Dear users:

- First of all, we would like to express our heartfelt thanks to the customers who purchase our instruments. This manual is for customers to use the instrument better,
- To use the instrument correctly, Prevent damage to operations and users, To protect the instrument from damage, To avoid unnecessary loss of property, Please read the instructions carefully before using.
- The Company is responsible for the safety and reliability of the instrument only
- if: The assembly operation, reloading, improvement and maintenance are carried out by the personnel approved by our company, The electrical equipment connected to this instrument conforms to the national standard, and the use of this instrument is
- carried out in accordance with the operation instructions.
- If the beauty agency using this instrument can not operate the instrument formally, it may cause the failure of the instrument function and may endanger the personal health. The company will provide the circuit diagram at the request of the user, and also list the calibration method and other information to help the user to repair the equipment part of the company classified by the by qualified technicians.
- This product must be used in strict accordance with the method of use in this manual, the misuse of methods other than the manual caused by all the consequences of their own responsibility, the company does not bear any responsibility.
- The Company does not provide any form of security, including (but not limited to) real and suitable security against it for a particular purpose. The Company shall not be liable for any incidental or indirect damage caused by the error contained in this information or by the actual performance and use of this manual. This user manual contains all the basic information of this instrument. This is the starting point for new users to start using this instrument, because it gives a basic introduction to the system, explains how it works, introduces the installation of this instrument and various operating methods, can be through the directory to find the required information.

This product is not a medical device, and its intended use is not disease treatment!

## 1.1 Instrument principles:

- By using HI-EMT( high energy focused electromagnetic wave) technology to expand and contract muscles, limit training, and deep remodeling of muscle internal structure, That is, the growth of myofibrils (muscle enlargement) and the production of new protein chains and muscle fibers (muscle hyperplasia) to train and increase muscle density and volume.
- HI-EMT 100% limit muscle contraction of the technology can lead to a large amount of fat decomposition, fatty acids from the decomposition of triglyceride outflow, a large amount of accumulation in adipocytes. Fat acidity is too high, fat cells apoptosis, in a few weeks by the body's normal metabolism out of the body.



## 1.2 Instrument parameters

VOLTAGE: 220V/50~60Hz

SCREEN SIZE: 10.4 inches

POWER: 2.3KVA

OUTPUT INTENSITY: 0-7TESLA

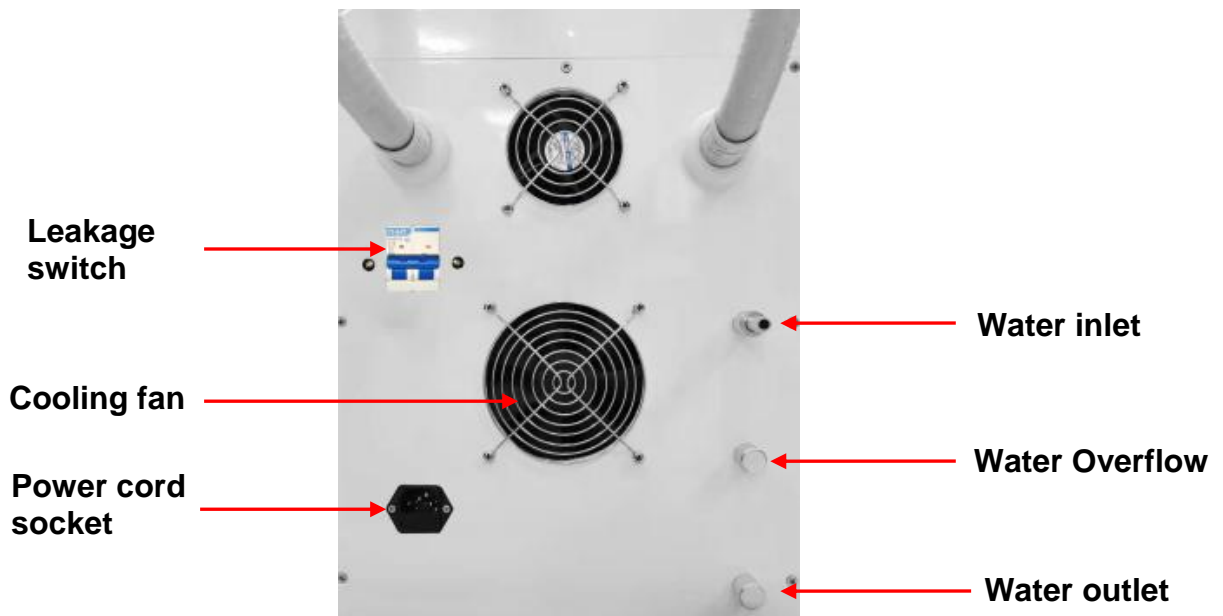
SHAPE OF STIMULATION PULSE: HI-EMT

PULSE: 300 $\mu$ s

PACKAGE SIZE: 44\*46\*80CM

WEIGHT: 35KG

### 1.3 Instrument appearance



Pay attention to: How to know enough water input?

Please observe water spill, water spill automatically from the water spill, means enough water input. Then draw out water pipe and water funnel.

Water overflow (please open the cover when you are filling water)

## 2、Matters needing attention

### 2.1 precautions before use

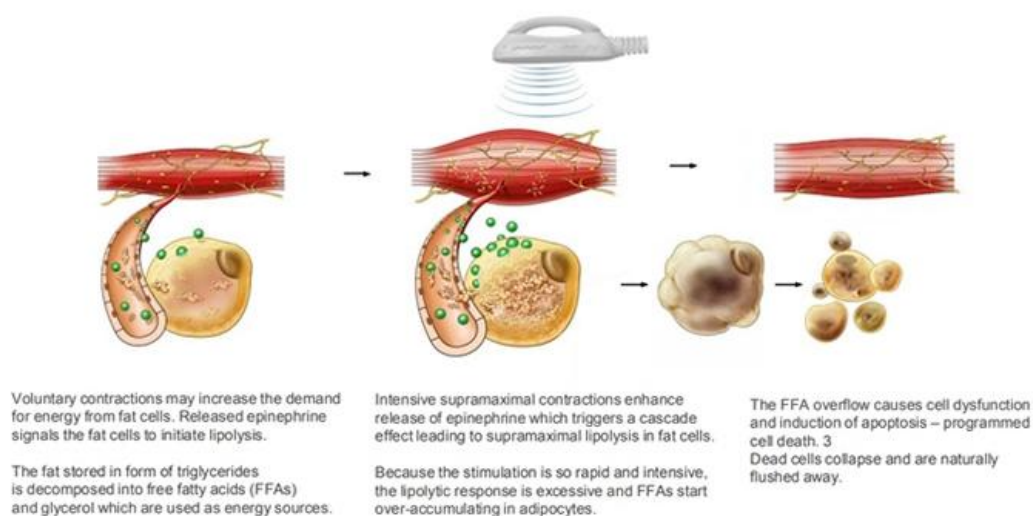
- Don't be full at least one hour after meals
- Before using the instrument, please remove any metal jewelry you wear
- Before starting the operation, first touch the probe to the skin vertically, then turn on the switch of the main unit, adjust the operation mode energy to the lowest, and then increase the energy sequentially according to the user's skin bearing capacity;
- It is forbidden to eat or drink during the operation, try to eat after one hour

### 2.2 contraindications

- Persons with wounds on the skin, or avoid the wounds;
- Patients with heart disease (such as arrhythmia), especially those with pacemaker;
- Cancer patients;
- Patients with infectious diseases;
- Pregnant women, breastfeeding, menstrual period;
- Major surgery patients and diabetic patients;
- There is any metal in the body;
- Persons suffering from cerebrovascular diseases (stroke patients)

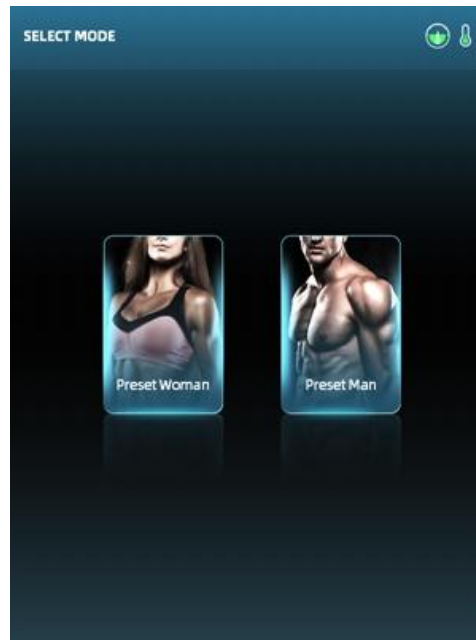
### 2.3 Precautions for customers during and after use

- After use, the user should add water in time;
- Do not overeating, arrange food and sleep reasonably;
- Be sure to strengthen moisturizing and sun protection after treatment;
- Quit spicy food;
- Please refrain from hot springs and saunas temporarily within three days;



### 3、 Operation process of the instrument interface

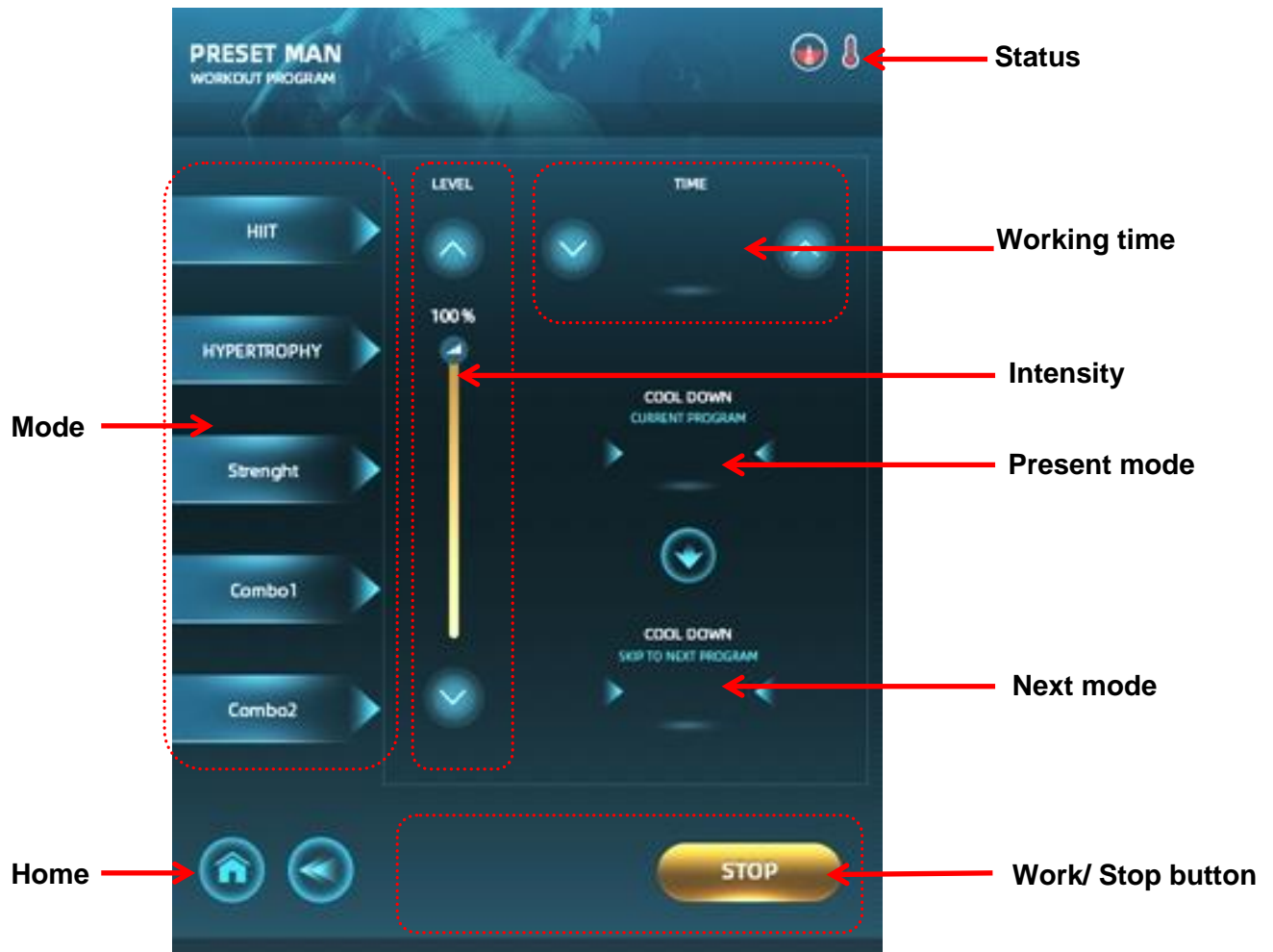
#### 3.1 Start interface



According to gender enter to the corresponding interface.



2. Click the operation part to enter the operation interface as follows



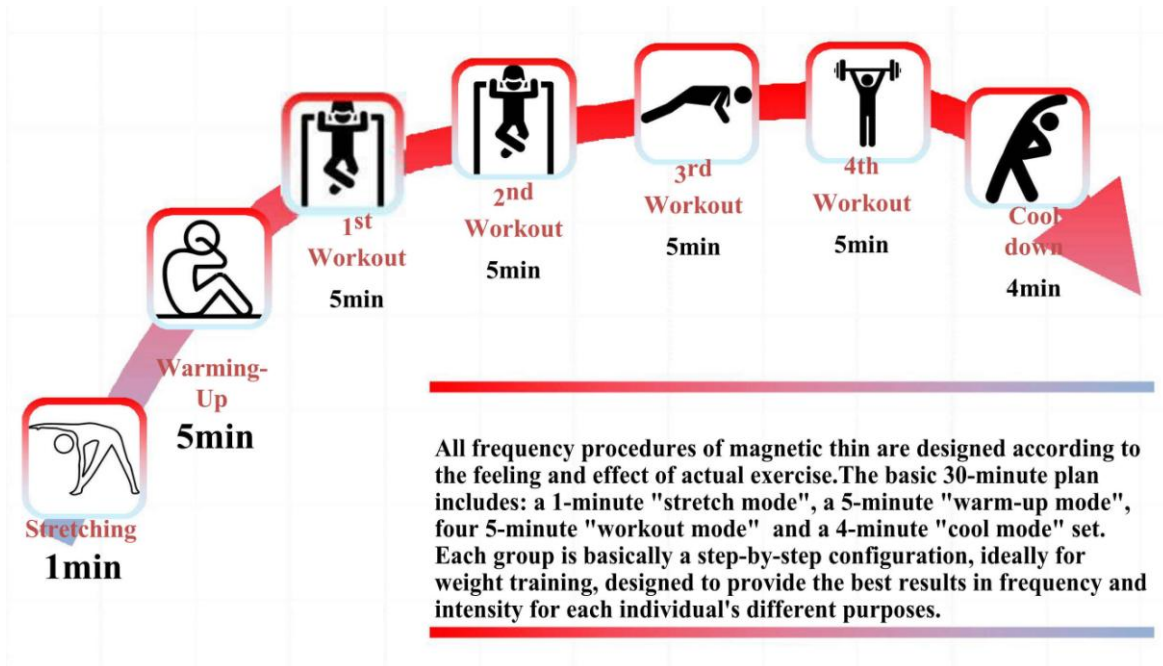
**Note:**

Clean the parts that need to be operated;

Adjust the intensity/time;

Align the handle with the operating part and press the work button on the screen to start the operation;

Note: Clean the handle each time after use, and gently place the handle on the handle holder;



Select different total operating time, "Stepped Workout" time allocation

Operating time	Stretching	Warm-Up	Workout	Cool down
30min	1min	5min	4 groups 5min	4min
25min	1min	5min	3 groups 5min	4min
20min	1min	5min	2 groups 5min	4min
15min	1min	5min	1 group 5min	4min
10min	1min	5min	—	4min
5min	1min	—	—	4min

## 4、 Maintenance and repair

### 4.1 maintenance

#### 4.1.1 daily inspection

Management personnel must regularly inspect instruments and components.

Are power outlets reliably connected to the ground.

Please check whether the power cord is damaged before using the instrument, and



stop using the instrument if it is damaged.

#### 4.1.2 clean

Clean equipment regularly to ensure cleanliness and good operation of equipment. Wipe the device case with a wet cloth and use soapy water or a neutral cleaner if the device is powered off.

#### 4.1.3 replacement of fuse



When replacing the fuse, please turn off the power and pull the plug to prevent electric shock.

### 4.2 maintenance

After the purchase of equipment to fill in the warranty card, and send to the manufacturer or agent, to have the warranty effect; From the date of issuing the bill for the purchase of the machine belongs to the company's product quality problems mainframe free warranty for one year (note: with the purchase bill and warranty card warranty; This warranty is limited to the main machine, excluding spare parts and other consumables that need to be replaced periodically. After the warranty period, please contact the manufacturer directly to provide paid after-sales service. Maintenance of the machine must contact with the company's business department or dealers, do not repair with.

## 5. Common faults and troubleshooting methods

The fault phenomenon	Cause of occurrence	Exclusion and resolution
Equipment not working	The power plug is not plugged into the socket. The power switch is not on. Power fuse failure.	Check the power supply Check the power switch Replace fuse
Handle not working	The probe is not installed correctly. The work head has been damaged. The connector behind the instrument is not installed correctly	Check whether the probe is installed correctly. Replace working head or silicone ring reinstal.

## 6. Manufacturer's liability

- ◆ The products produced shall conform to the product standards. If the products do not conform to the product standards, the company is responsible for the replacement and return of goods.

- ◆ The company shall bear the corresponding liability for personal and property damage caused by the manufacturing defects of the products, provided that the company shall not be liable for the following situations:
- ◆ The purchaser or operation user fails to use the product in accordance with the operation specification in the instruction manual, or fails to use the product in accordance with the safety precautions and warning instructions. Violation of regulations on transportation, installation, use, maintenance and storage of products, causing damage to products, human life or property.
- ◆ The company carries out lifelong maintenance and technical service for the products, and will repair for users free of charge any manufacturing quality problems occurred during the stipulated quality assurance period.
- ◆ When the accessories need to be replaced, the original accessories must be purchased from the company, otherwise the user shall bear the adverse consequences.

## **7. Storage and transportation management**





- ◆ Storage: the equipment should be stored in the original packaging box, in a well-ventilated room, the packing box should be high, the ambient temperature is  $-10^{\circ}\text{C}\sim 40^{\circ}\text{C}$ , the relative humidity is not greater than 93%, not allowed to be placed in the vicinity of harmful gases, flammable, explosive substances and corrosive gases.
- ◆ Transportation: the instrument under the packing condition is suitable for highway, railway, air and water transportation. In the process of loading, unloading and transportation, it shall prevent violent vibration and impact, and shall not be affected by moisture, and shall not be mixed with inflammable and corrosion-prone substances, mixed transport, specific requirements in accordance with the provisions of the order contract.

## **8. Use period**

- ◆ The warranty period of this instrument is 1 year (except for man-made damage).
- ◆ The warranty period of spare parts is 3 months (except for man-made damage).
- ◆ If the instrument beyond the service life continues to use, it shall be tested and approved by the engineer, and the performance of the instrument shall be tested regularly by the engineer in the subsequent use.
- ◆ Scrapped instruments and accessories that have expired should be disposed of

according to local regulations.

## 9.List of accessories

Serial number	name	number	picture
1	The host	1 pcs	
2	handle	2pcs	
3	The belt	3article	
4	The power cord	1article	
5	The instructions	1 this	

## 13.AFTER-SALE SERVICE AND MAINTENANCE

The term of maintaining guarantee is main device 1 year and spare part 3 months from the date of purchasing according to the receipt. (Expendable is not included in it.) Others not included in maintaining guarantee or over the time, we also supply to maintain and renew but need charges. Please contact with the dealer if need change of purchasing the parts and easily expendable products.

### 13.1 We will guarantee the quality of our equipment, normally there is no quality problem

- ◆ If there is a deficiency, please email or call us on the reasons, it would be best to dealt with by email or telephone. Because some of the problems are caused by using the machine in a wrong way.
- ◆ We suggest the client to take photos of the area where the problem occurs, we will pass them to our technician , our technician will give a satisfactory answer within 1-7 working days

- ◆ If the problem comes from the spare part within the warranty, we could consider in changing the spare part to our client, which could be sent with his/her next order. If the next order is uncertain, we could pay freight cost to send the spare parts.
- ◆ If the problem comes from the main device within the warranty, we could advice our client to post the device back to our company for repair by ordinary post, or we could re-send a new one to our client. If the cost of posting the problematic device back to BEST is more than the value of a new device, BEST would take it into consideration, according to the actual status; apply to re-send a completely new device back to our client.

**13.2 We won't supply maintaining guarantee if troubles as below:**

- ◆ Disassembling the machine by self;
- ◆ Fall it without caution;
- ◆ Lack of reasonable keeping and protect;
- ◆ Not operate according to the user manual.
- ◆ Expendable reasons

If changes of the design and specification of the machine, we will not notice you in addition. If any queries, please feel free to contact with the local marketing company.

All in one, we will try our best to serve you and also need your fully cooperation. Thanks.

<b>Product name :</b>			<b>Purchase date:</b>			<b>deadline:</b>		
<b>Seller:</b>			<b>Add.:</b>			<b>Tel.:</b>		
<b>Customer:</b>			<b>Add.:</b>			<b>Tel.:</b>		
<b>Repair date</b>			<b>Reason of the fault</b>			<b>Repair content</b>		