



御光

深圳御光新材料有限公司

SHENZHEN YUGUANG NEW MATERIAL CO., LTD

TRANSPARENT

LED DISPLAY

TRANSPARENT LED DISPLAY

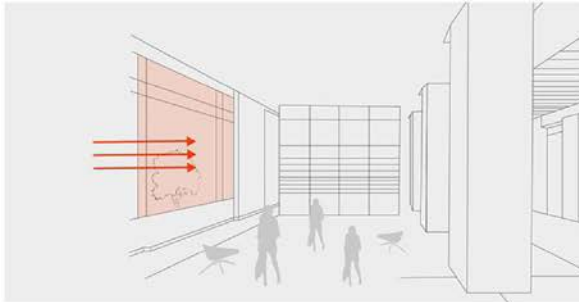


High Transparency: 80%~90%

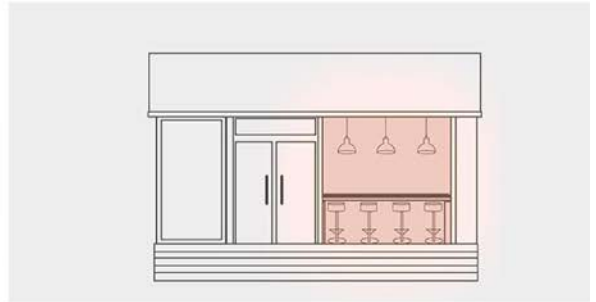
Transparent LED display is unnoticeable from further away. It can effectively display the content without blocking out light, while also providing a see-through view with high transparency.



Window into advertising screen



Does not affect natural light



See-through view

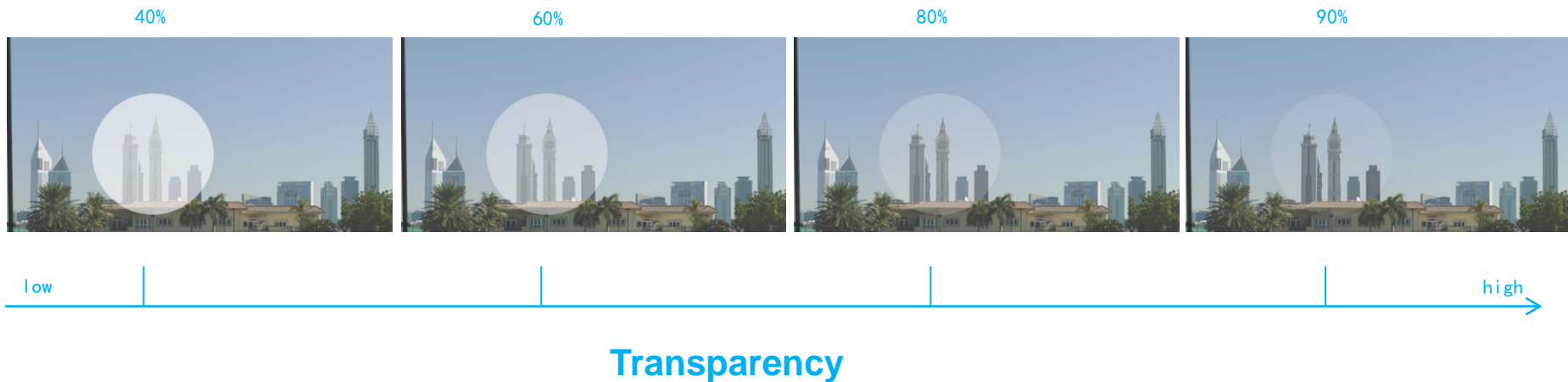
High Brightness

High brightness LED 1812-2020 (1R1G1B) SMD with chip integrated
Brightness up to 5000 cd/m²
Meets the needs of used indoors and outdoors in the daytime

See The Difference

TRANSPARENCY Makes

The transparency of traditional transparent led display is 40%-60%, while our patented transparent led display transparency reaches 80%-90%. This is a REAL difference.



Seamlessly build the size you need

The modular size of the traditional transparent led screen is usually 1000x1000mm. If the screen size is bigger, need to integrate many modules together, which causes many borders in between. This leads to a imperfect visual experience.

5000mmX5000mm



Traditional Transparent LED Display

Our patented transparent LED display can be customized to meet any size requirements perfectly.

For example, the vertical layout is 5 meters max., then the horizontal layout is unlimited, with no borders in between. Or vice versa.

5000mmX5000mm

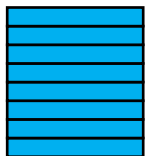


Our Patented Transparent LED Display

Ultra Thin Screen Body

The thickness of traditional transparent led screen is 70 mm~80 mm. Heavy body weight causes difficult installation. Besides, the thick screen body affects the visual experience.

80 mm



Traditional Transparent LED Display

We adopt ultra clear tempered glass as the screen body, with thickness as thin as 10 mm.

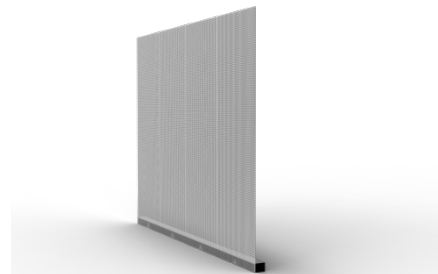
Easy and fast installation.

High transparency.

Good heat dissipation.

Extraordinary visual experience.

10 mm

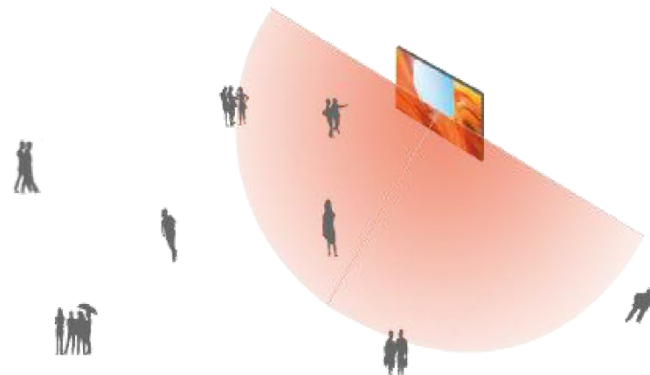


Our Patented Transparent LED Display

Control Method

The screen image can be controlled by a computer or a mobile phone, through a LED display transmit.

Remote control by mobile App



View Angle up to 160°

Typical Applications

Due to high transparency and other advantages, our patented transparent LED display offers a striking alternative to traditional LED screens.

By programming LEDs to work together, the lights with different pixel colors create the image on the screen. It can display text, image, video and other pictures, supporting almost all image and video file formats.

Can be widely used in:

Glass wall and facades, Retail store, Shopping center, Car showroom, Airports, Hotels, Stadium, etc.



Glass Walls and Facades



Car Showrooms



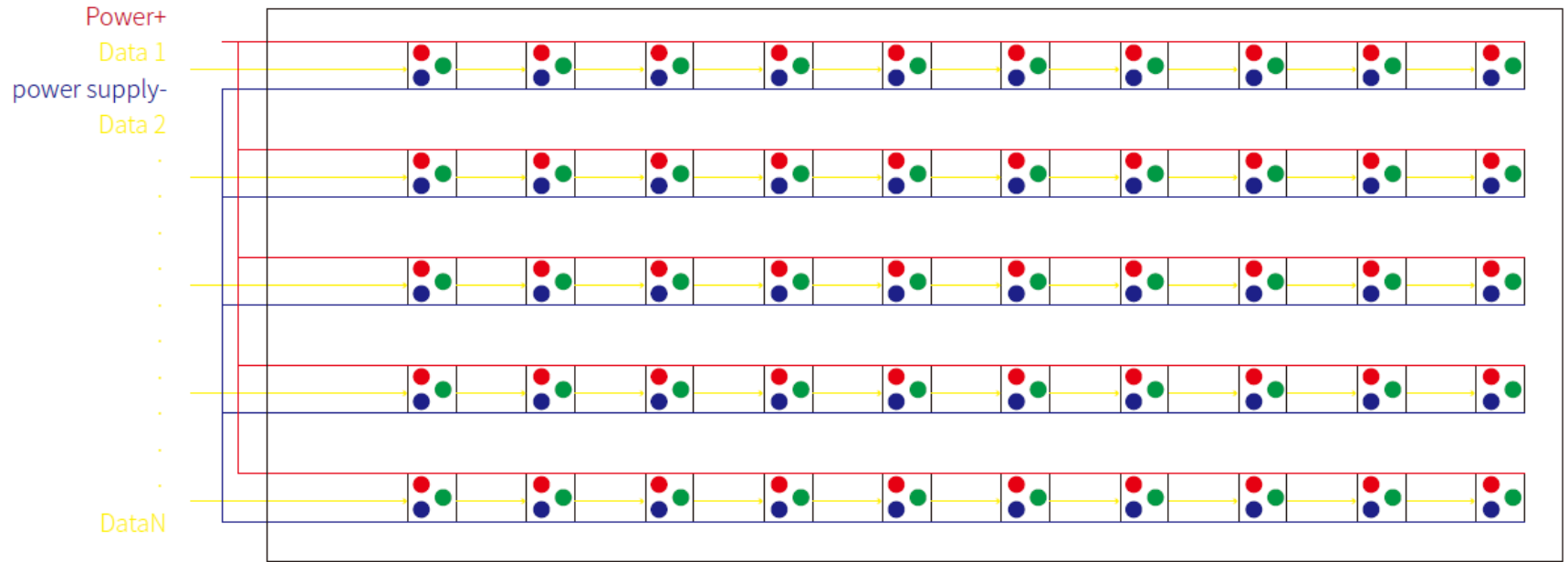
Corporate Buildings



Retail Stores

Easy Maintenance

Unique signal transfer method allows for easy maintenance.



Product Parameter

Items	P5*10	P10	P10*20	P20
Material	Tempered glass	Tempered glass	Tempered glass	Tempered glass
Transparency	80%	80%	90%	90%
Brightness Adjustable	5000 cd/m ²	5000 cd/m ²	5000 cd/m ²	5000 cd/m ²
Brightness Level	256 grades	256 grades	256 grades	256 grades
Grey Scale Level	256 grades	256 grades	256 grades	256 grades
Minimum Viewing Distance	≥7.5 meters	≥15 meters	≥23 meters	≥30 meters
Driving Way	Static(No screen flickering)	Static(No screen flickering)	Static(No screen flickering)	Static(No screen flickering)
Refresh Rate	3840	3840	3840	3840
Viewing Angle	≥160	≥160	≥160	≥160
Control System	Led Display Transmit	Led Display Transmit	Led Display Transmit	Led Display Transmit
Working Voltage	+5V DC	+5V DC	+5V DC	+5V DC
Average Power Consumption	400W/m ²	250W/m ²	150W/m ²	80W/m ²
Maximum Power Consumption	800W/m ²	500W/m ²	300W/m ²	150W/m ²
Working Temperature	-20~55℃	-20~55℃	-20~55℃	-20~55℃

Case Show



**Coming
Soon**







认证证书

证书号: USA19Q4326R0M

兹证明

深圳御光新材料有限公司

统一社会信用代码: 91440300MA5DRQCG3Y

注册地址: 深圳市龙岗区宝龙街道清凤大道华强工业物流园3号厂房2层东(同乐社区宝龙工业城高科大道6号1楼)(龙岗大道5003号旭源大厦90.)

生产/办公地址: 广东省深圳市龙岗区宝龙街道清凤大道华强工业物流园3号厂房2层

质量管理体系符合标准

ISO 9001:2015

质量管理体系适用范围

调光玻璃、调光膜的设计、生产和销售(自产自销)

初次发证日期: 2019年06月08日

证书颁发日期: 2019年06月08日

证书有效期至: 2022年08月07日

签发: **吴凤茹**



北京东方纵横认证中心有限公司



如您需要证明您的质量管理体系符合此证书方标准有效, 本证书可在北京东方纵横认证中心有限公司网站(www.eacc.com.cn)和国家认证认可监督管理委员会官方网站(www.cnca.gov.cn)上查询, 也可扫描右下的二维码查询。

发证机构地址: 北京通州区中关村科技园区通州金桥科技产业基地盛源国际南楼1211号第一层101106



VERIFICATION OF CONFORMITY

Certificate No.: CTL1810231011-RC

Applicant : Shenzhen YuGuang New Material Co.,Ltd
Address : 2/F, Building 3, Huaqiang Industrial Logistics Park, No. 43 Qingfeng Avenue, Longgang District, Shenzhen
Product : PDLC smart glass 'film'
Tracemark : 御光新材料
Model(s) : 300W, 30W, 50W, 100W, 200W
Manufacturer : Shenzhen YuGuang New Material Co.,Ltd
Address : 2/F, Building 3, Huaqiang Industrial Logistics Park, No. 43 Qingfeng Avenue, Longgang District, Shenzhen
Test Report : CTL1810231011-R

Complies with the requirements of the
 EC RoHS Directive 2011/65/EU
 EC RoHS Directive 2011/65/EU & Amendment 2015/863

Test Standards:
 IEC 62321-7-1:2015
 IEC 62321-7-2:2017
 IEC 62321-4:2013+A1:2017
 IEC 62321-5:2013
 IEC 62321-6:2015
 IEC 62321-8:2017

Remarks:

Based on the voluntary assessment of the product sample and technical file, we confirm that the above-mentioned product meets the requirements of the EC directive. The CE mark as show below can be used, under the responsibility of the manufacturer or the importer, after completion of an EC declaration of conformity and compliance with all relevant EC directives.



Long Qi

For Chief Executive
 Sep. 05, 2019



Shenzhen CTL Testing Technology Co., Ltd.
 Add: Floor 1-4, Banks Technology Park, No.2011, Shahu Road, Yanshan District, Shenzhen, China 518055
 Tel: 86-755-89486194 E-Mail: cti@ctl-tsb.com web: www.ctl-tsb.com

高新技术企业证书

企业名称: 深圳御光新材料有限公司

发证时间: 二〇一九年十二月九日

批准机关:

证书编号: GR201944204725
 有效期: 三年



ABOUT OUR COMPANY

Shenzhen Yuguang New Material Co., LTD. (hereinafter referred to as "Yuguang") is a comprehensive service provider specializing in intelligent light control solutions. Our team has accumulated more than ten years of industry experience in intelligent light control, intelligent home, intelligent building and artificial intelligence. Committed to providing global customers with a variety of practical intelligent light control solutions, diversified intelligent products and other technical services. Research and development is our core advantage, in product research and development, the company has launched a series of high-quality products such as intelligent light control products, interactive digital signage, intelligent home products, by the industry wide attention and the market favor.

Our Spirits= Focus & Innovation

The r & D and design team of YUGuang focuses on the field of intelligent light control, providing the most appropriate comprehensive solution for each customer, and winning the trust of customers with strength. Our vision is to output the brand value of imperial light in the intelligent light-controlled display industry in the future and become the leading enterprise in the industry.

Our Promise= Green & Quality

Environmental protection and stability is yuguang's commitment to every customer, quality first is yuguang's adherence to the truth, our products strictly implement ISO9001 and ISO4001 standards, from product design, material inspection to the whole process of production and manufacturing control, and finished product shipment and waste recycling, all requirements of green environmental protection, in line with the EU RoHS standards.

Our Creed = Win-Win

Yuguang technology's business creed is "only win-win, to symbiosis". Take full advantage of the company's comprehensive advantages, At the beginning of the customer's project planning design, in-depth communication with customers, to understand the practical application of customers, for customers Customers to provide more practical suggestions, recommend the most appropriate scheme to achieve win-win cooperation!



Our clients





御光新材
YUGUANG NEW MATERIAL

网 址：www.yuguangkj.com

联系电话：0755-84865732

传 真：0755-84651406

地 址：深圳市龙岗区智慧家园二期3栋A座31楼

Website: www.yuguangkj.com

Tel: 0755-84865732

Fax: 0755-84651406

Address: 31 / F, Building 3A, Wisdom Home, Longgang District, Shenzhen City, China 518000