

装饰网 Decorative Wire Mesh

特点：经过特殊加工的金属网可以应用在装饰领域，产品外观具有层次感，给人一种很前卫的视觉效果，在保证美观的情况下，产品也具备超强的抗腐蚀能力，采用了优质铝合金板和不锈钢板作为产品原材料，表面喷涂氟碳烤漆、抗老化粉末喷涂、以及阳极氧化处理。

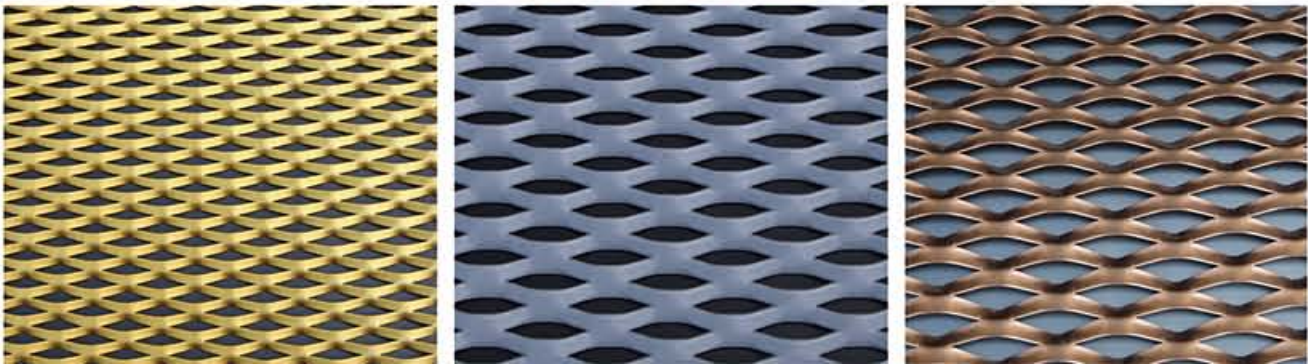
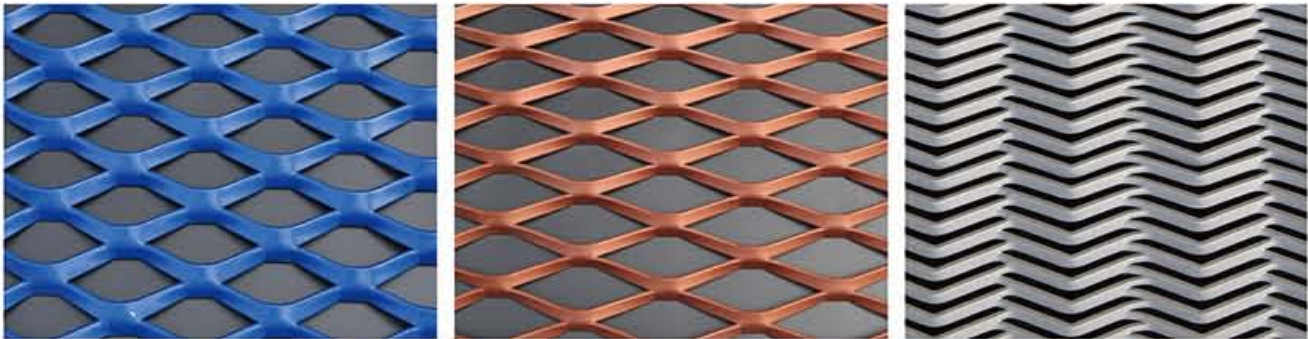
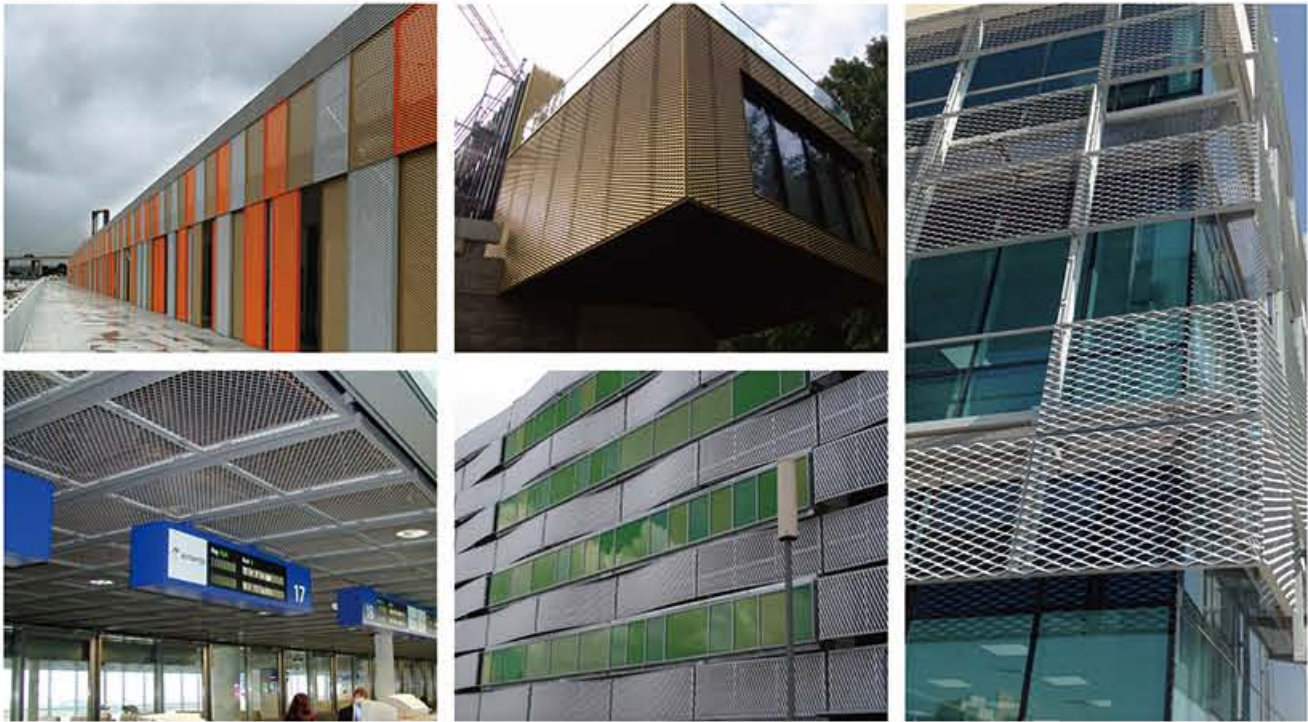
用途：建筑幕墙，室内墙面装饰，天花板吊顶，园林造型，室外小型建筑。

Materials: high quality aluminum alloy , stainless steel plate

Features: After special processing, applied in the field of decoration, product appearance have administrative levels feeling and fashionable visual result, not only guarantee beautiful, product but also have strong ability to resist corrosion

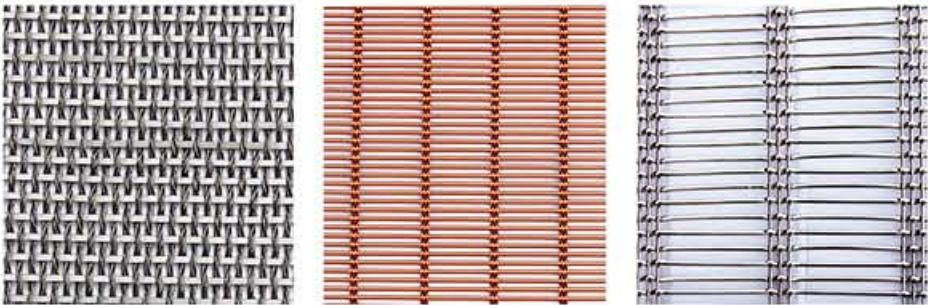
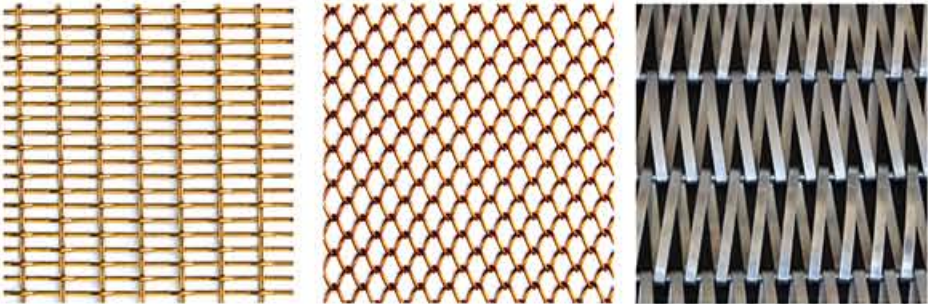
Surface treatment: spraying fluorocarbon lacquer that bake, anti-aging, powder coating, and the anode oxidation treatment.

Usage: Building curtain wall, interior wall decoration, ceiling, garden style, outdoor small buildings



产品采用优质不锈钢、黄铜、磷铜等编织而成，从拉丝、捻股、合绳、抛光、漂洗、织网、销售及售后服务等方面入手，逐渐形成生产与销售一条龙服务。产品具有经久耐用，华丽高档，科技含量等特点，广泛应用于高级建筑的窗帘、吊顶、楼梯、电梯、豪华办公大楼、宾馆、豪华舞厅、营业大厅等建筑物的室内外装饰，灯光照射下金碧辉煌，典雅精致。

Decorative wire mesh is weaved with high quality stainless steel wire, aluminum alloy wire, brass wire, cooper wire or other alloy materials. It is a new decorative material in the modern construction industry and widely used as curtains in house, screens for dining hall, isolation in holes, ceiling decoration, decoration in trade fair exhibition and retractable sun protection, etc. With its versatility, unique texture, variety of color, durability and flexibility, metal wire mesh fabric offers a modern decoration style for constructions. It offers a variety of color changes with light and gives unlimited imagination.



砖带网 Brick Mesh

材质: 热镀锌板

特点: 产品用镀锌铁板冲压扩张制成, 施工方便具有较大抗力强度、耐压、防裂防震、耐温度变化性能、将建筑体用此钢网连接成整体结构的特点。

用途: 砖用砖砌网在各种类型建筑工程中都有许多应用, 被用于地基、护墙等对强度和稳定性有较高要求的地方及局部应力地方。

Material: hot-dipped galvanized steel sheet

Features: Products made from hot dip galvanized steel strip expansion stretching, Have the large crack resistance, compression strength, shock resistance, temperature resistance, well connection into the whole structure

Usage: Used for the foundation, wall of the higher requirements of strength and stability of place and local stress.



护角网 Corner Bead

材质: 镀锌板、铝、不锈钢、PVC、玻璃纤维

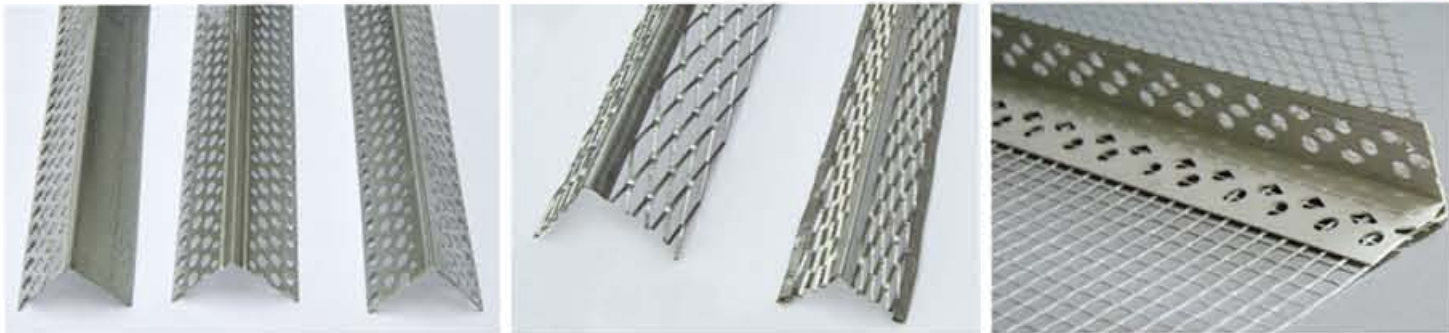
特点: 使用护角网有效防止灰泥转角处遭致损害, 操作快捷且方便施工, 加固墙角强度。

用途: 建筑内、外墙角的保护。

Material: galvanized steel sheet, stainless steel plate, aluminum plate, PVC, fiberglass

Features: protect corner suffer damage, fast and convenient to operate, strengthening corner strength.

Usage: the protection of the building inside and outside the corner



玻纤网格布 Fiberglass Mesh

材质: 玻璃纤维

特点: 具有质轻、高强、耐温、耐碱、耐腐蚀、等特点。能有效避免抹灰层整体表面张力收缩以及外力引起的开裂, 轻薄的网格布经常使用于墙面翻新和内墙保温。

用途: 主要适用于水泥, 石膏, 墙体建筑物和构筑物内外表面增强。

Material: fiberglass

Features: light, high strength, heat resistance, alkali resistance, corrosion resistance, etc. Can effectively avoid the plaster layer overall shrinkage and external force caused by the cracking surface tension, light fiberglass mesh is often used in metope renovation and interior wall insulation.

Usage: mainly applicable to the cement, gypsum, interior and exterior surface enhanced wall buildings and structures.



冲孔网 Perforated Metal Sheet

材质: 铁板、铝板、不锈钢、镀锌板、塑料板、PVC 板、铜板、木板等。

种类分为: 数控冲孔、数控转塔冲孔、激光切割、水刀切割、卷到卷冲孔、卷到张冲孔、蚀刻穿孔。

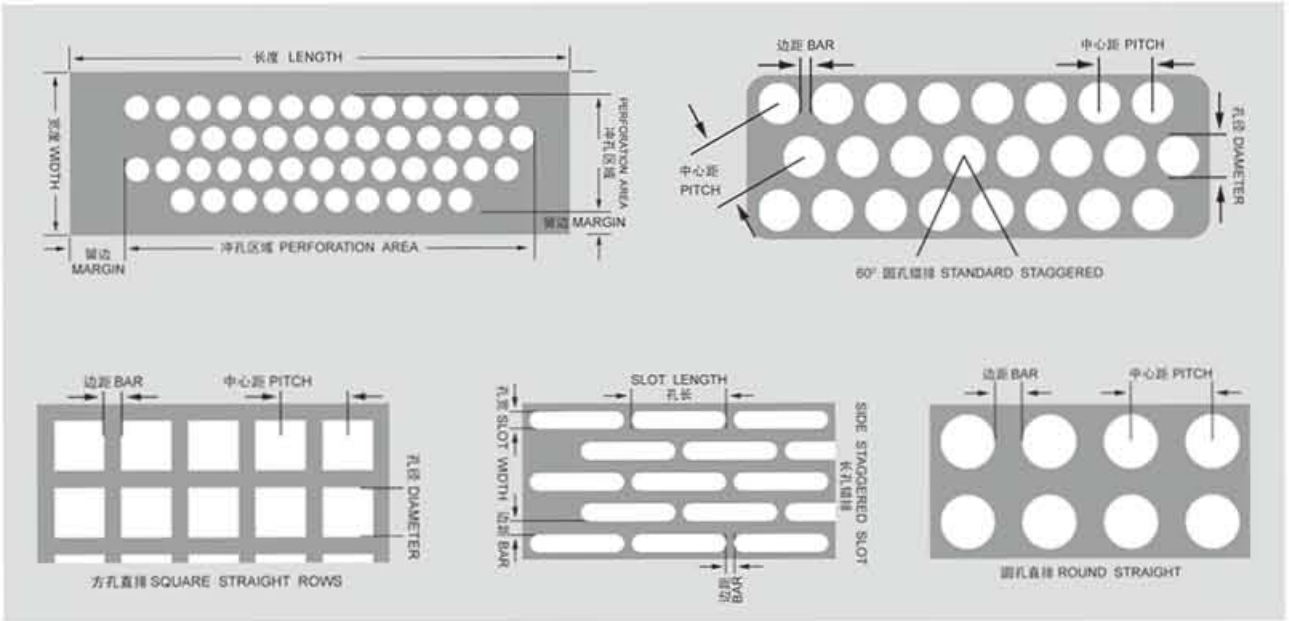
用途: 冲孔网广泛应用于化工机械、制药设备、食品饮料机械、烟卷机械、收割机、干洗机、烫台、消音设备、制冷设备 (中央空调) 音箱、工艺品制作、造纸、液压配件、滤清设备等各行各业。

Material : Carbon Steel, Aluminum, Stainless Steel, Galvanized Steel, PP Sheet, PVC Sheet, Cooper, Wood board etc.

Categories: CNC perforating, CNC turret perforating, Laser cutting, Water jet cutting, Coil to coil perforating, Coil to pieces perforating, Etching etc.

The Characteristic of Perforated metal : Can be readily formed, Accuracy of size, Can be painted or polished, Superior abrasion resistance, Easy installation, Attractive appearance, Wide range of thickness available, Largest selection of hole size pattern and configurations, Uniform sound abatement, Light weight, Excellent wear life and durable.

Application : perforated metal mesh is widely used in chemical machinery, Pharmaceutical equipment, food and beverage machines, cigarette machines, harvesters, dry-cleaning machine, ironing table, silencing equipment, refrigeration equipment (central air conditioning) ,speakers, crafts, papermaking, hydraulic fittings, filtration equipment and other industries.



钢板网 Expanded Metal Mesh

材质: 不锈钢板、低碳钢板、铜板、铝板、钛板、镍板、铝镁合金板。

网孔形状: 菱形、方形、鱼鳞孔。

用途: 该产品网孔牢固, 使用寿命长。广泛用于国防航天、铁路、高速公路、煤矿矿山、轻工机械、石油化工、纺织、建筑、农林业、园林公园、畜牧养殖等各个行业, 是地基、楼顶、粉层、剪力墙、隔音墙、高强度混凝土浇筑、大型矿筛、高速公路护栏、体育场所、学校、别墅围栏、马路绿化饭防护、堤坝防护、机械设备的安全防护以及点击风叶罩壳、各类机床、汽车设备、空气过滤及散热处理、电子行业及家用电器电池、各类作业梯式扶手、走道路板、脚手架、花架的最佳配套产品。

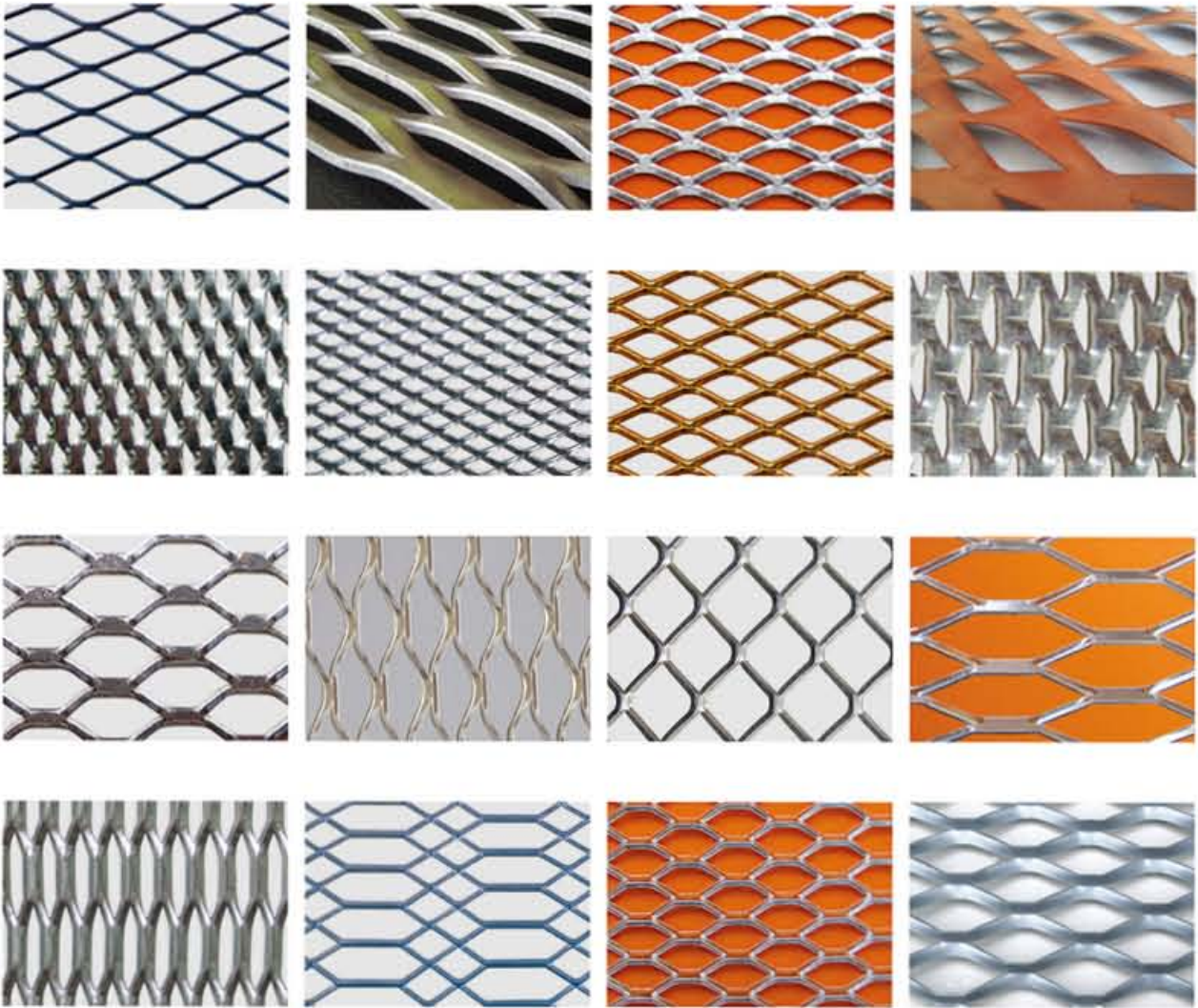
特殊规格可以根据您的要求定做!

Materials:stainless steel, low carbon steel, brass plate, Aluminum plate, titanium plate, nickel plate, Al-Mg alloy plate.

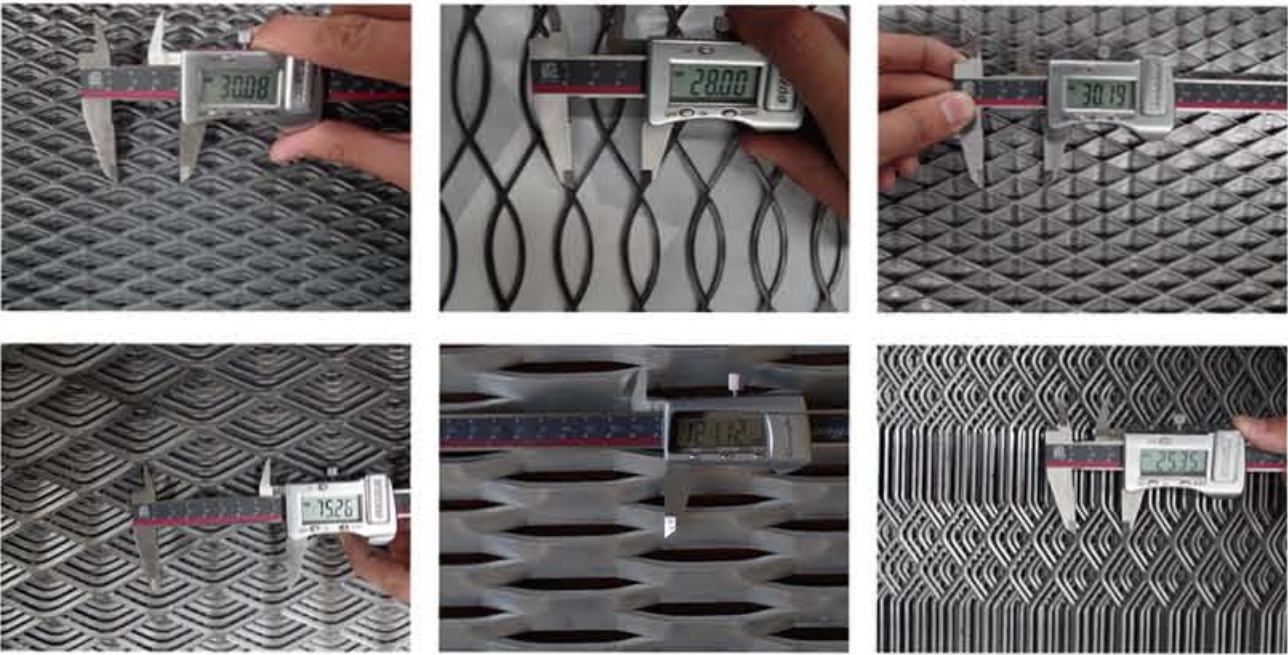
Hole shape:diamond, square hole, scale hole.

Application:this product is everlasting, it is widely used in Filters baskets, air filtration units, Medicine, Machine guards, animal cages, the protecting of electrical equipment window, Safety door & window, room dividers, Decorative ceiling, Highway fence, civil building.Concreter in for cement, Walkway, Anti-dazzle panels, Plaster trims, Fan covers.

Special designs or sizes is also available at customers' request.

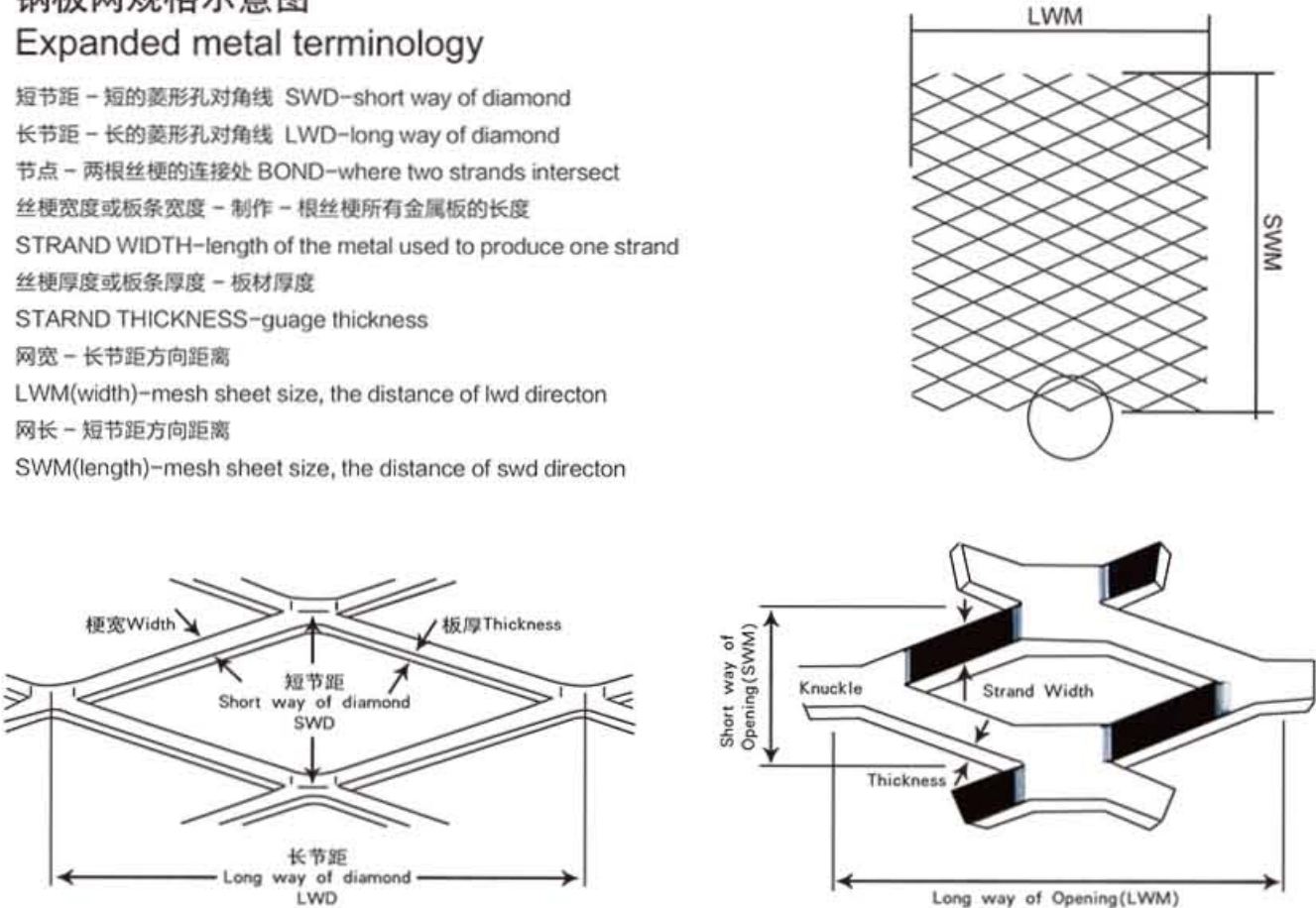


钢板网应用实例
Further Processed Products of Expanded Metal



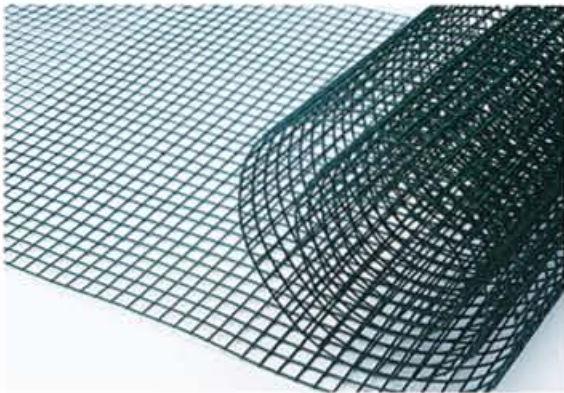
钢板网规格示意图
Expanded metal terminology

短节距 - 短的菱形孔对角线 SWD-short way of diamond
长节距 - 长的菱形孔对角线 LWD-long way of diamond
节点 - 两根丝梗的连接处 BOND-where two strands intersect
丝梗宽度或板条宽度 - 制作 - 根丝梗所有金属板的长度
STRAND WIDTH-length of the metal used to produce one strand
丝梗厚度或板条厚度 - 板材厚度
STARND THICKNESS-guage thickness
网宽 - 长节距方向距离
LWM(width)-mesh sheet size, the distance of lwd directon
网长 - 短节距方向距离
SWM(length)-mesh sheet size, the distance of swd directon



电焊网 Welded Wire Mesh

材 质 : 低碳钢丝、不锈钢丝
Material: Low carbon steel wire, stainless steel wire
编制特点 (Weaving and characteristics) :
后热镀 Hot-dipped Galvanizing after Welding
先热镀 Welding with hot-dipped galvanized iron wire
后电镀 Electro galvanized after welding
先电镀 Welding with electro galvanized iron wire



规格 Specification List of Welded Wire Mesh		
网孔 Opening		丝径
In "inch"	In Metric Unit(mm)	Wire Diameter
1/4" x 1/4"	6.4mmx6.4mm	BWG22-BWG24
3/8"x3/8"	10.6mmx10.6mm	BWG19-BWG22
1/2"x1/2"	12.7mmx12.7mm	BWG16-BWG23
5/8"x5/8"	16mmx16mm	BWG18-BWG21
3/4"x3/4"	19.1mmx19.1mm	BWG16-BWG21
1"x1/2"	25.4mmx12.7mm	BWG16-BWG21
1-1/2"x1-1/2"	38mmx38mm	BWG14-BWG19
1"x2"	25.4mmx50.8mm	BWG14-BWG16
2"x2"	50.8mmx50.8mm	BWG12-BWG16
Technical Note: 1,Standard Roll Length:30m, Width:0.5m --2.0m. 2,Package:In waterproof paper in rolls. Custom Sizes and Package available at request.		

PVC电焊网 PVC Coated Welded Mesh		
网孔 Opening		丝径
In "inch"	In Metric Unit(mm)	Wire Diameter
1/2" x 1/2"	12.7mm x 12.7mm	BWG16--BWG21
3/4" x 3/4"	19mm x 19mm	BWG16--BWG21
1" x 1"	25.4mm x 25.4mm	BWG15--BWG20
Technical Note: 1,Standard Roll Length:30m, Width:0.5m --2.0m. 2,Package:In waterproof paper in rolls. Custom Sizes and Package available at request.		

电焊网片 Welded Mesh Panel

种 类 : 不锈钢网片、黑铁丝网片、镀锌铁丝网片、涂塑网片、带框网片。
用 途 : 广泛用于展览会、样品架等。普通网片用于建筑行业作舒乐舍板网和隔断网，是高层新型建筑的理想材料。
Welded Wire Mesh Panel is made of superior quality welded mesh, with flat even surface, firm structure, be used extensively in building, food, agriculture and so on.
Assortments available:Stainless Steel Welded Mesh Panels,Galvanized Welded Mesh Panels,PVC coated Welded Mesh Panels.
Uses: full of vitality and color of the mesh is widely used in exhibitions, such as sample holder. Ordinary mesh used in the construction industry to network and GJ board partition net, is the ideal material for high-rise new construction.



金刚网 Stainless Steel King Kong Wire Mesh

材质: ss304, 316 不锈钢丝、低碳钢丝、锰钢丝
特点: 具有强度高、通透性好、抗剪、抗撞击等优质性能,并且能够有效防止昆虫进入室内。表面经过粉末静电喷涂。
用途: 适用于家庭、办公楼门窗防盗,蚊虫较多的山区、野外,潮湿或者阳光充足干燥的环境,316 材质可以使用含盐分空气的在海岸城市。
Material: S.S.304, S.S.316, S.S.316L
Features: high strength, good permeability, shear, impact resistance ect. and can effectively prevent insects from entering the interior.
Surface treatment: powder electrostatic spraying.
Usage: suitable for anti-theft for family, office building, mosquito more mountains, wild, wet or dry sunny environment, 316 materials can use salty air in coastal cities



金属板网防虫网 Expanded Metal Mesh For Insect Netting

材质: 纯铝板、铝合金板、冷轧板
特点: 产品采用冲剪拉伸工艺,后期经过流水线静电喷涂 pvc 制作而成,具有非常好的通透性,再防止蚊虫进入同时不影响空气流通。
用途: 适用于家庭、办公楼、工厂等场合防止蚊虫、老鼠等有害动物进入室内。
Material: aluminum plate, aluminum alloy plate, cold rolled steel sheet
Features: the product adopt the punching and shearing tensile technique, and then by electrostatic spraying to make it , has the good permeability, to prevent mosquitoes from entering and keep the airiness at the same time.
Application: suitable for family, office buildings, factories and other places to prevent mosquito rats and other vermin enter indoor



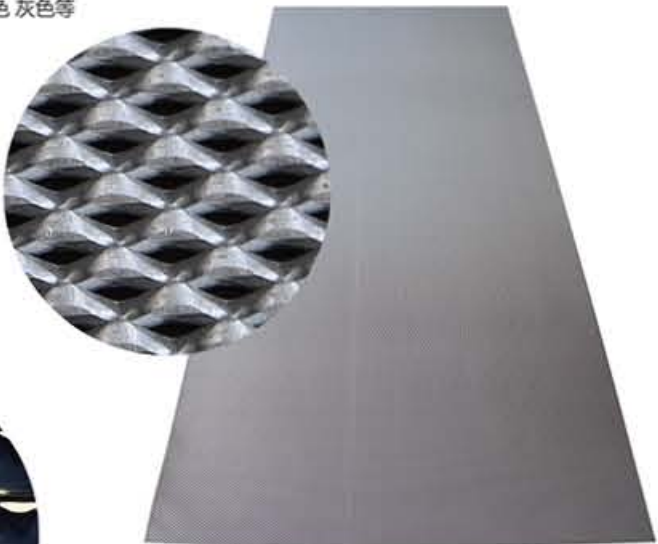
铝制冲孔安全门窗网 Perforated Aluminium Security Door Mesh

这种安全网比金刚网重量轻也防腐蚀,可定制不同颜色,外观漂亮又可防蚊,广泛用于高档场所 办公室,特性是在里边可以清楚的看到外边,外边看不到里边。
the security mesh is light in weight than stainless steel security mesh also resistant to corrosion, it can be supplied in custom colours, works as insect protection, and has a great appearance. It is widely used as a window and security door scree in high places, offices and homes, which work on the optical principle that people outside cannot see inside properly. Limited vision mesh works if there is correct lighting allowing a person on the inside to see outside and not to be seen from the visitor's side.

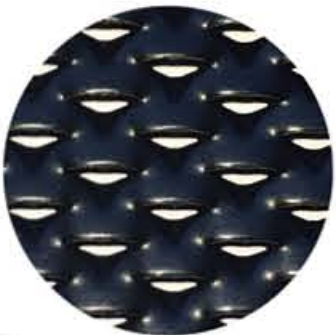
喷塑冲孔网
Perforated Aluminium security door mesh.
Black powder coated 喷黑塑
Material Aluminium 材质: 铝
Material thickness 2 mm 厚度: 2mm
Hole 2mm 网孔: 2mm



喷塑铝板网
Limited Vision Mesh (One way vision mesh)
Colour: cream, white, black, grey and much more. 颜色: 乳白色 白色 黑色 灰色等
Material: Aluminium Sheet 材质: 铝
Approx. Thickness: 0.5mm 厚度: 0.5mm
Approx. Hole Size: 3mm x 6mm from centre to centre. 网孔: 3mm*6mm



喷塑铝板网 (厚 1.8mm)
1.8mm aluminum Security door mesh
Black powder coated. 喷黑塑
Material Aluminium 材质: 铝
Material thickness 1.8mm 厚度: 1.8mm
Hole 1mm*3mm 网孔: 1mm*3mm

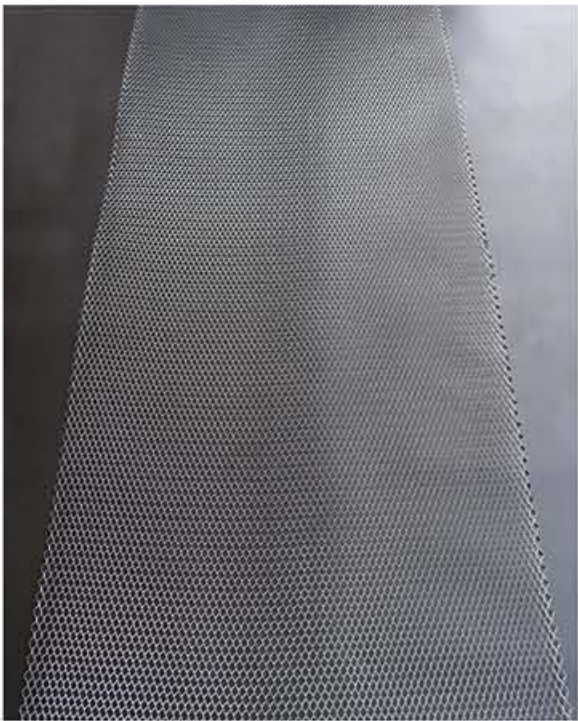


批荡网 Diamond Metal Lath

材质：热镀锌板
特点：产品采用热镀锌钢带扩张拉伸而成，产品网孔牢固，能够有效防止墙面开裂。
用途：主要用于轻钢住宅结构、墙体结构、旧墙加固、建筑防裂、建筑体外围护替代模板等等

Material: hot dipped galvanized steel sheet
Features: Products made from hot dip galvanized steel strip expansion stretching, product are more firm, and effectively prevent the wall cracking
Usage: mainly used in light steel residential structure, wall structure, the old wall reinforcement, crack and architectural enclosure in vitro alternative templates, etc

Type	Specification	Size	PC/Bundle	PC/Pallet
SQL-01	1.75LBS	27"*96"	10	500
SQL-02	2.5LBS	27"*96"	10	500
SQL-03	3.4LBS	27"*96"	10	500

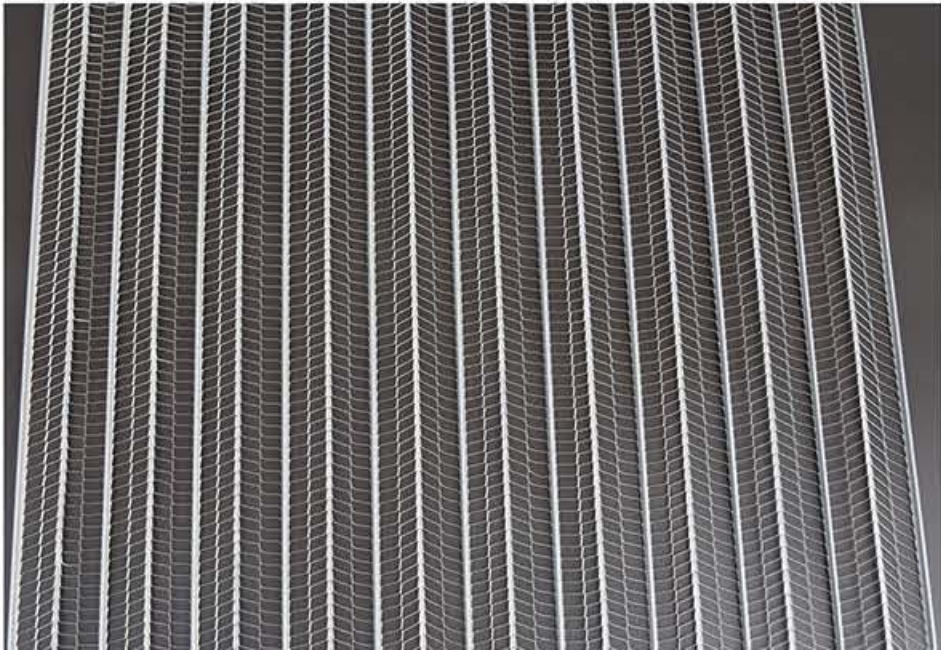


有筋扩张网 Rib Lath

材质：热镀锌板、不锈钢板
特点：产品其可随意弯曲造型，可作免拆模板使用，具特强的抓浆功能，在钢结构中能起到环箍连接成整体抗震，可以提高建筑的整体强度。
用途：主要用于工业建筑和民用建筑的内外墙体承重和非承重墙体、楼板、楼梯及屋面板等。

Material: hot dipped galvanized steel sheet, stainless steel plate
Features: easy to bend model, and well used for free form removal, with strong stresses the function of slurry, play an hoop in the steel structure connection into the overall seismic, bigger improve the overall strength of the building.
Usage: mainly used in industrial and civil buildings, both inside and outside wall bearing and the bearing wall, floor, stair and roof board.

Thickness (mm)	Mesh (mm)	Rib Height (mm)	Rib Distance (mm)	Weight (kg / pc)	Width (mm)
0.30	16 X 11	8	150	0.85	600
0.35	16 X 11	8	150	1.00	600
0.40	16 X 11	8	150	1.14	600

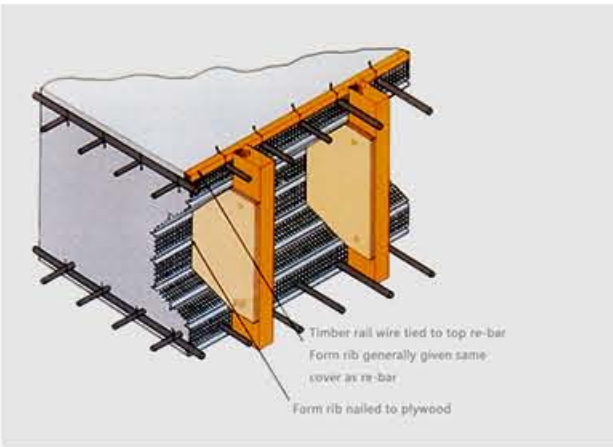
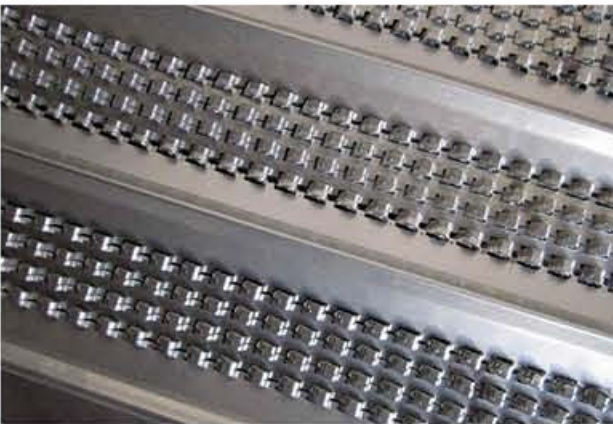


模板网 Hy Rib Formwork

材质：热镀锌板
特点：易切割、易弯曲、易成型，适合高空作业。在极端气候环境下，不会剥落或变形。快易收口网设计独特，能留住灌注的混凝土。施工时便于监察混凝土的灌注，可减低空隙、蜂窝、沙孔出现之风险。
用途：建筑模板网广泛用于隧道、桥梁和阀门系统等，使施工过程更快速，更稳固。

Material: Hot-dipped Galvanized Steel Sheet
Features: Easy to cut, bend and forming, is more suitable for aerial work. In extreme climates, won't flake or deformation. Fast convergent web design unique, can keep pouring concrete. To facilitate supervision of the concrete during the construction of perfusion, can reduce risk of gap, honeycomb, sand holes.
usage: It is widely used in tunnels, Bridges and valve system, etc., make construction process more fast, more stable.

Material	Material Thickness (mm)	Width (mm)	Length (mm)	Area (m ²)
Hot-dipped GalvanizeSteel Sheet	0.16	450	2000	0.9
	0.2	450	2000	0.9
	0.25	450	2000	0.9
	0.3	450	2000	0.9
	0.35	450	2000	0.9
	0.4	450	2000	0.9



建筑用钢板网 Expanded Metal Mesh

材质：冷轧板、镀锌板、不锈钢板、铝板
特点：产品采用金属板材冲剪拉伸制作而成，具有良好的抗拉强度，可塑性强，网孔梗丝竖立可增加水泥的附着力，增加建筑的整体强度。
用途：建筑外墙抹灰，水泥地面防裂，造型制作，隧道加固等工业建筑以及居民建筑。

Material: cold rolled steel sheet, galvanized steel sheet, stainless steel plate, aluminum plate
Features: the product adopts sheet metal punching and shearing tensile, have the good tensile strength and plasticity, thereby increase the adhesion of cement, and the whole strength of the construction.
Purpose: building external wall plaster, cement floor crack, model making, tunnel reinforcement and other industrial buildings and residential buildings.

Mesh	Thickness	Size
4 × 8mm	0.35mm	1*10m
5 × 10mm	0.4mm	1*10m
10 × 25mm	0.5mm	1*20m
12 × 30mm	0.6mm	1*30m



六角网 Hexagonal Wire Mesh

材 质：低碳钢丝、不锈钢丝、PVC 丝。

编织:正捻、双向搓捻、先编后镀、先镀后编,又分热镀锌、电镀锌、PVC 涂塑等。

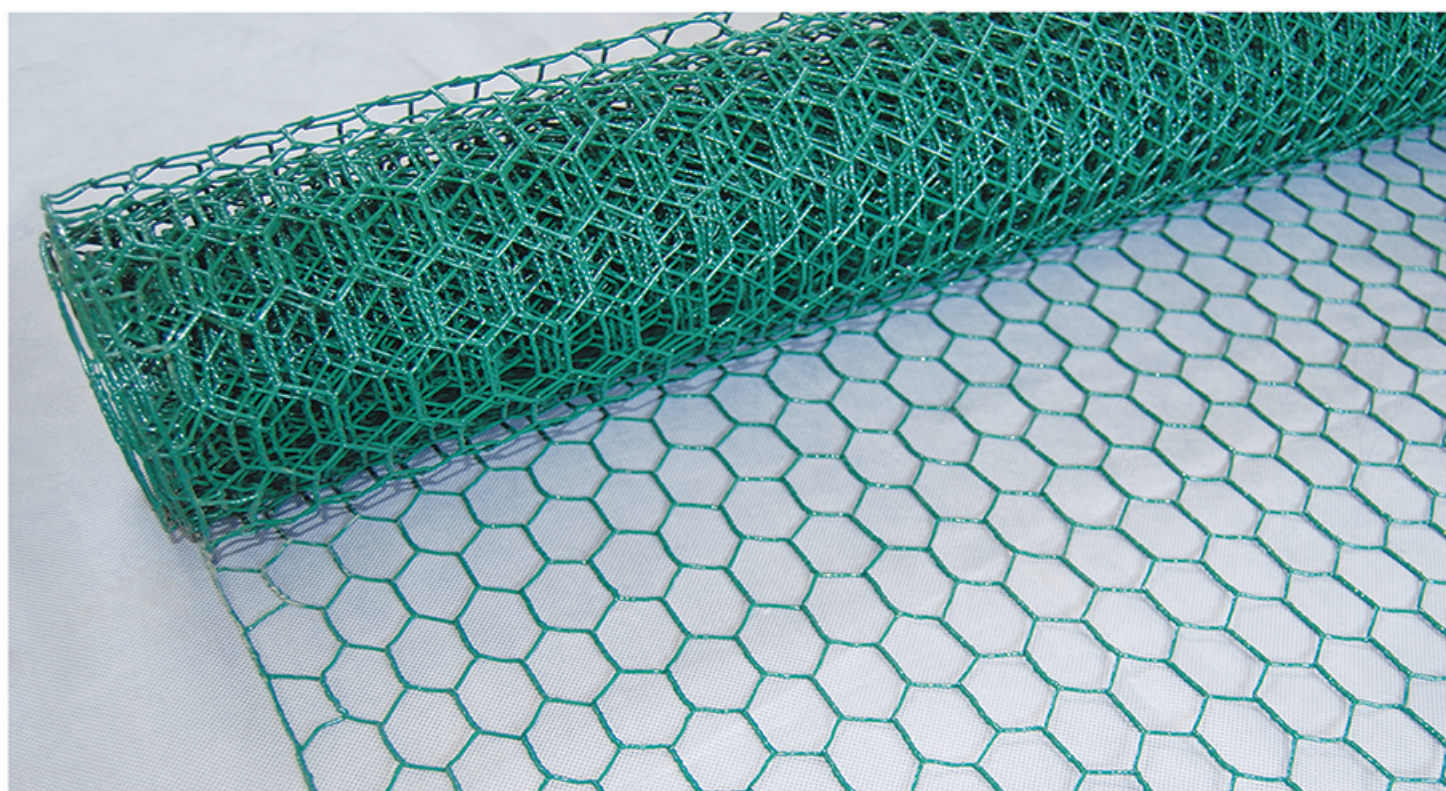
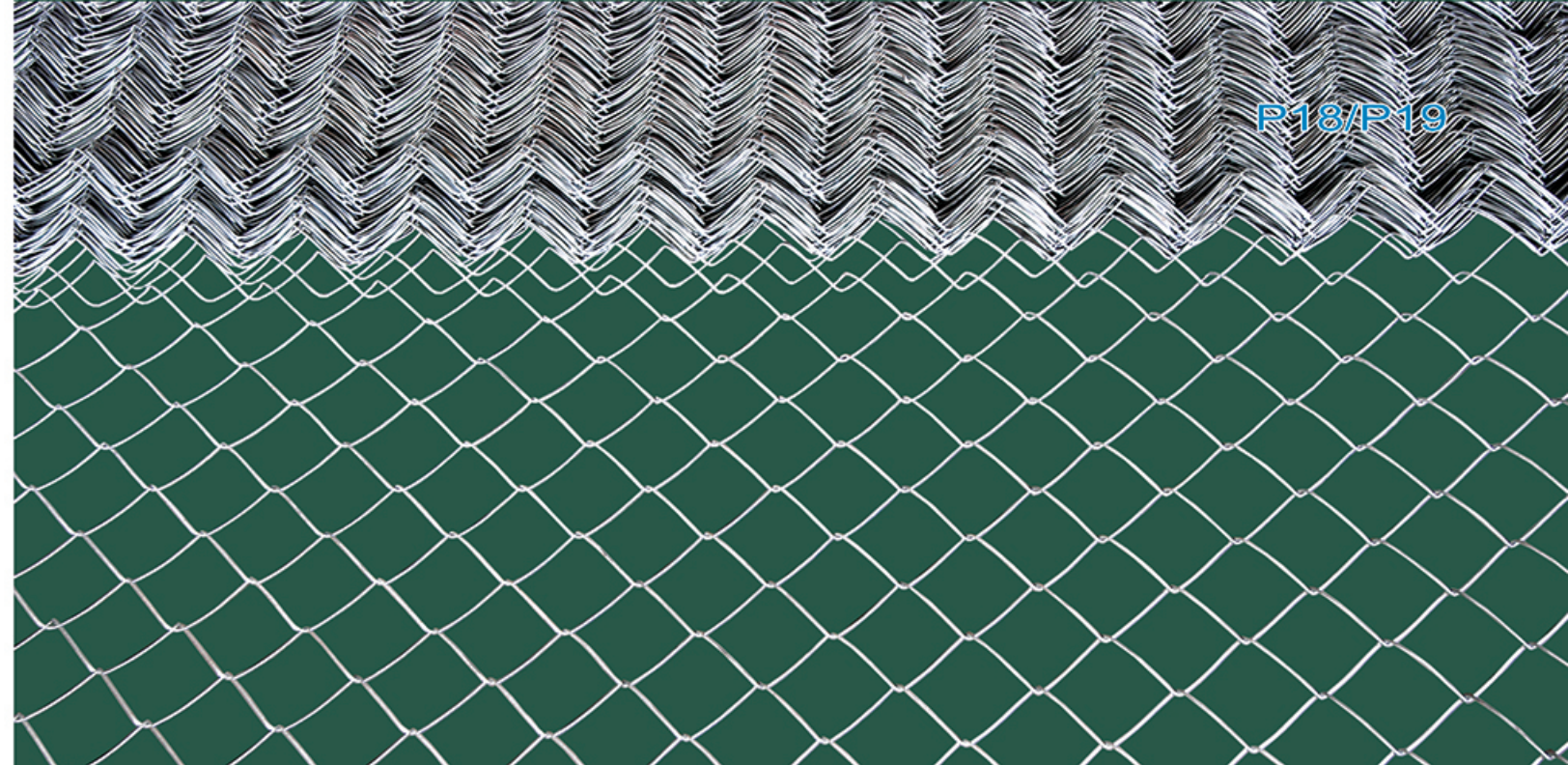
特 点:结构坚固,表面平坦,具有良好的防腐蚀、抗氧化等特点。

用途：广泛用于工业及建筑业，筛选砂粒，过滤液体及气体。还用于饲养鸡、鸭、鹅、兔及动物园围栏，机械设备的防护，高速公路护栏，体育场所围网，马路绿化带防护网。该丝网在制作成箱子状的容器后，用乱石等填满网箱，可用于保护和支持海堤、山坡、路桥、水库及其他土木工程，是防洪和抗洪上好材料。

Wire materials: Galvanized iron or Stainless steel wire, PVC coated wire.

Twist: regular twist (three twist, five twist), reverse twist

Application: Hexagonal wire netting with its good corrosion resistance and oxidation resistance, serves well as strengthening, protection and temperature keeping materials in the form of mesh container, stone cage, isolation wall, boiler cover or poultry fence in construction, chemical, breeding, garden and food processing industries.



勾花网
Chain Link Fence

材 质: 优质低碳钢丝、不锈钢丝、铝合金丝。

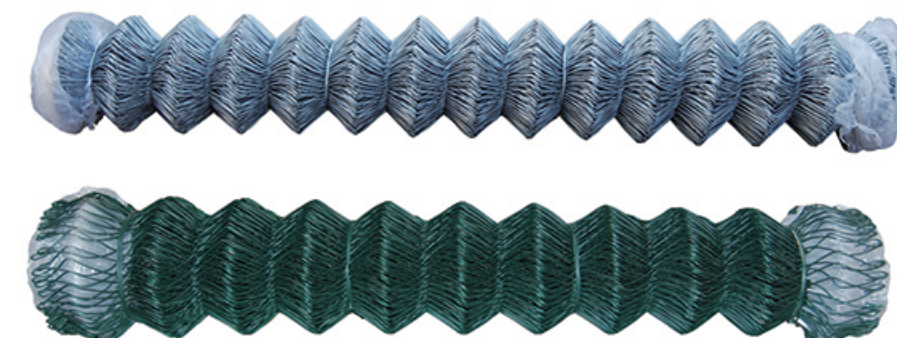
编织及特点：勾编而成；编织简洁、美观实用。

用途:该产品用处广泛, 饲养鸡、鸭、鹅、兔及动物园围栏。机械设备的防护, 高速公路护栏, 体育场所围网, 马路绿化带防护网。该丝网在制作成箱子状的容器后, 用乱石等填满网箱, 可用于保护和支持海堤、山坡、路桥、水库及其他土木工程。是防洪上好材料。还可用于工艺品制造, 机械设备的输送网。

Chain Link Fence is extensively used as fences for playground and gardens, super highway, railway, airport, port, residence, etc. It is also used for breeding of animals.

Detail specifications as listed below.

Selvage (End) Finish: KK- Knuckle
& Knuckle KB - Knuckle & Barbed



规格	1"	1.5"	2"	2.25"	2.4"	2.5"	3"	4"
Specification	25mm	40mm	50mm	55mm	60mm	65mm	76mm	100mm
18#—7#								
1.20mm—5.00mm								
1.0m—50m								
0.5m—5.0m								
特殊规格可根据用户需求加工订做								

