

Dedicated  
Will Be More Professional  
2022-2023

# Al / Cu universal terminal block

## TRN Series & TR Series



AL / CU



[www.traner.cn](http://www.traner.cn)  
[www.traner-elec.com](http://www.traner-elec.com)

**TRANER**<sup>®</sup>  
— Since 1990 —

## Corporate Milestone

**2021, Oct.**  
We finished our new plant which was invested around 8 millions US dollars.

**2015, May.**  
Changed the company name to Zhejiang Qianna Electric Co., Ltd.

**2004, Oct.**  
Changed the company's name to Wenzhou Qianna Electric Co., Ltd.

**1990, Jun.**  
The founder started the production in a family workshop.

2022

2021

2018

2015

2006

2004

1999

1990

**2022, Jan.**  
TRANER's turnover reach 20 millions US dollars.

**2018, Dec.**  
The annual turn over more than 15 millions US dollars.

**2006, Mar.**  
Got ISO9001 : 2000 Certificate.

**1999, Jun.**  
Yue qing Zhi yuan Accessory Factory was established and became the official supplier of Chint.



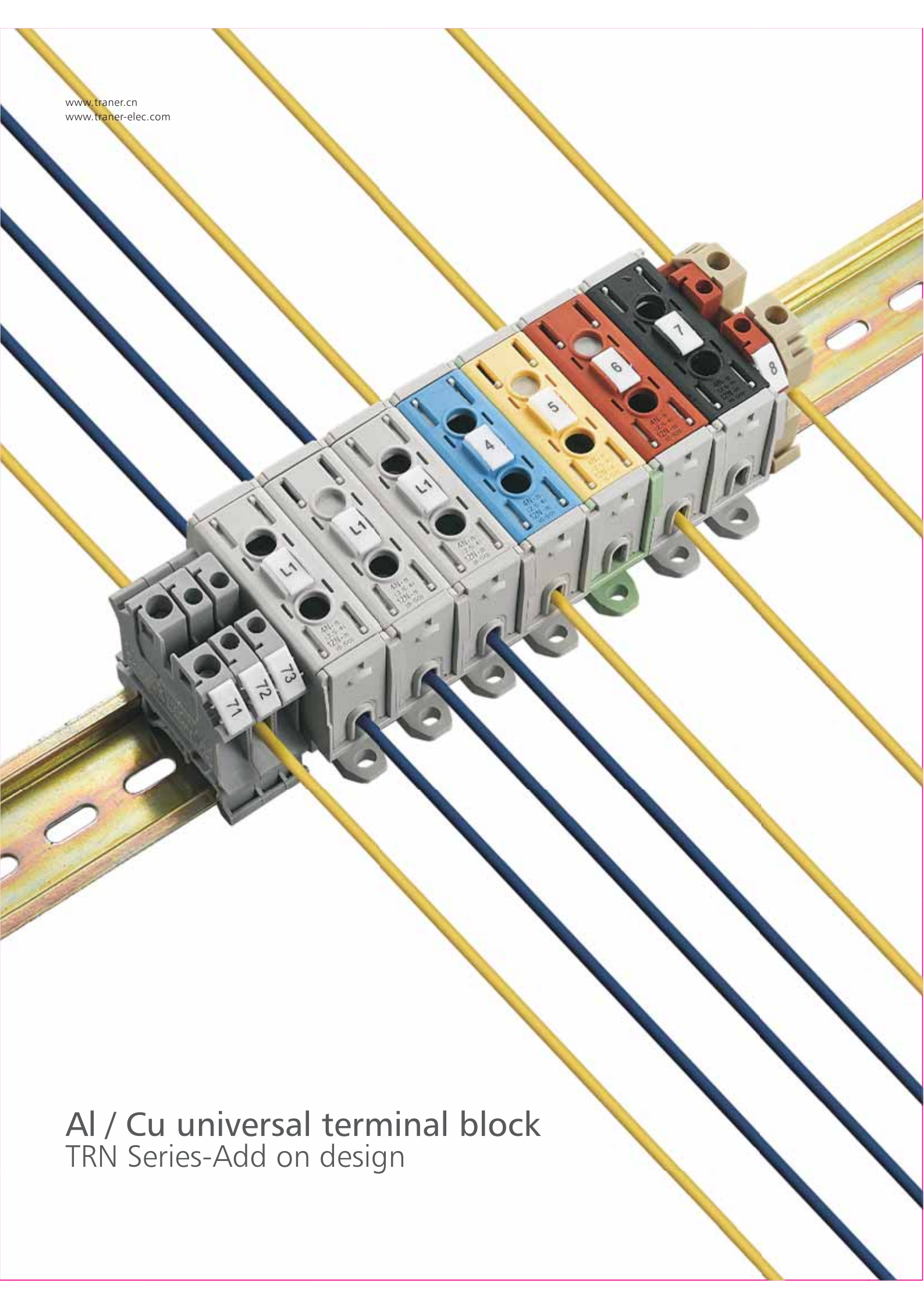
## Since 1990

ZHEJIANG QIANNA ELECTRIC CO.,LTD(TRANER) was founded in 1990, we engage in tooling making, parts punching, injection mould, spot welding, and PCB production to finished product assembly. Now we are professional with MCCB, ELCB, MINI safety breaker MCB, RCCB, RCBO, Al/Cu universal terminal block, etc. Our product are wide selling to Norway, Sweden, Germany, Netherlands, Turkey, Thailand, Malaysia, Korea, Japan etc more than 15 countries. With so many years rich experience, we have won favorable comments due to the superior quality, reasonable price and excellent after-sale service.

TRANER has strong technical ability, complete production line and testing equipment. All the process strict control to ensure the excellence, reliable and stable product quality. So far, the company has passed ISO9001:2015 quality assurance system certification and ISO14001:2015 environmental management system certification; Our products have passed the national compulsory CCC certificate, CE, CB etc product certificates.

Warmly welcome friends at domestic and abroad come to talk, welcome to TRANER!





Al / Cu universal terminal block  
TRN Series-Add on design

# Al/Cu universal terminal block

## TRN Series-Add on design

### TRN series (Add-on design)

TRN series Al/Cu universal terminal block offers the best quality,safety installation features,excellent performance in the market.It is designed for copper and aluminum conductor.The most important is this terminal block can allow each any pieces connect each other easily.

### Technical features:

- Add-one design which is allow any pieces can connect each other.
- Good design on side cover and top barrier to reach Ip20 protection level to avoid finger touch the metal part or any insect go inside the terminal to cause any electric shock risk.
- Compact size design.
- Quickly and easily DIN-rail mounting or screw mounting.
- Reliable housing material polyamide(PA) according to UL 94 standard.

### Conformity



### Standards

EN 60947-7-1 / EN 61238-1

### Technical information

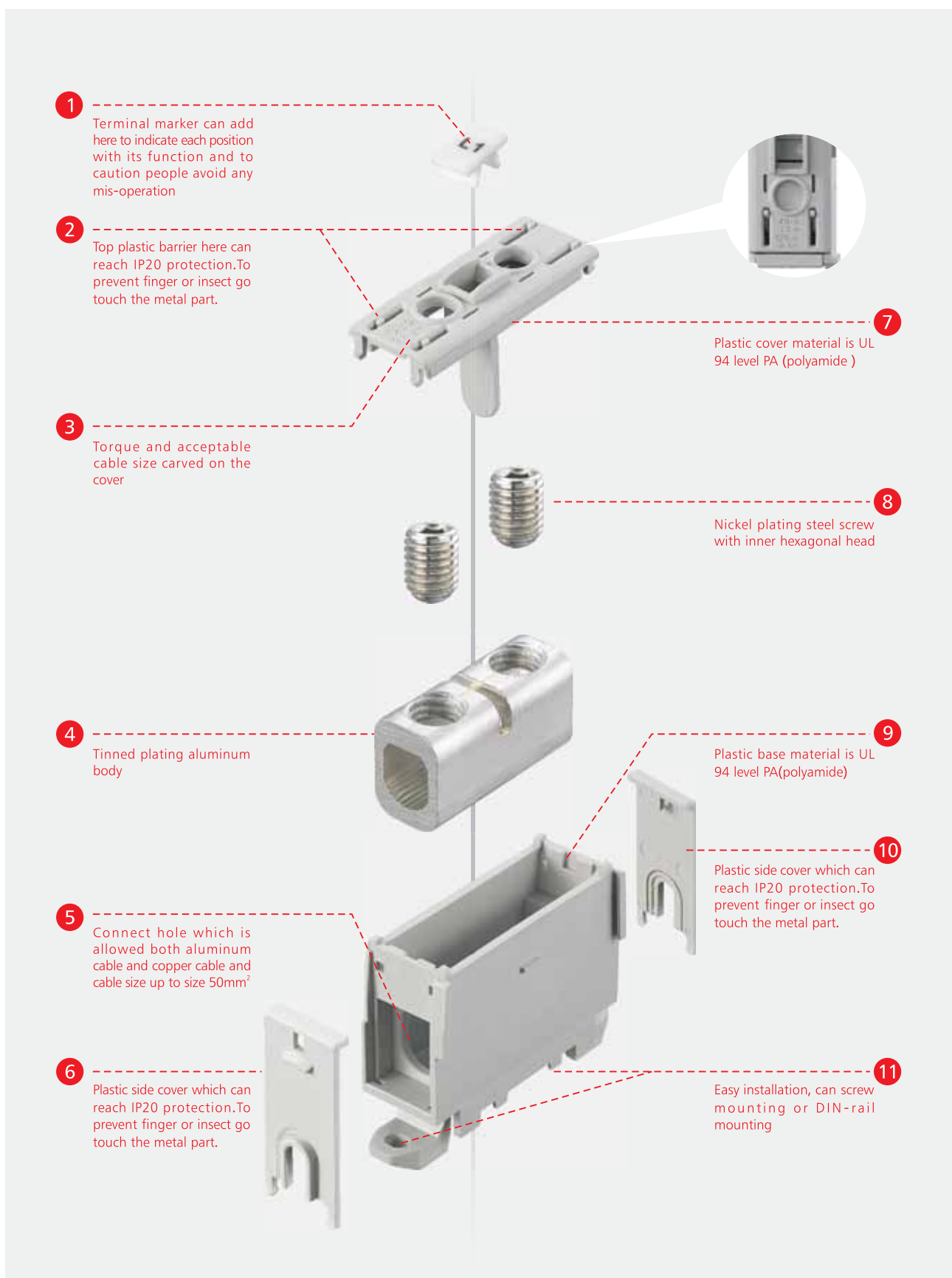
Cross-section range: Al 6-50mm<sup>2</sup> / Cu 2.5-50mm<sup>2</sup>  
Nominal current range: 145A-160A

### Material

Housing: UL 94 V-0 polyamide  
Metal body: Tinned plating aluminum  
Screws: Nickel plating steel

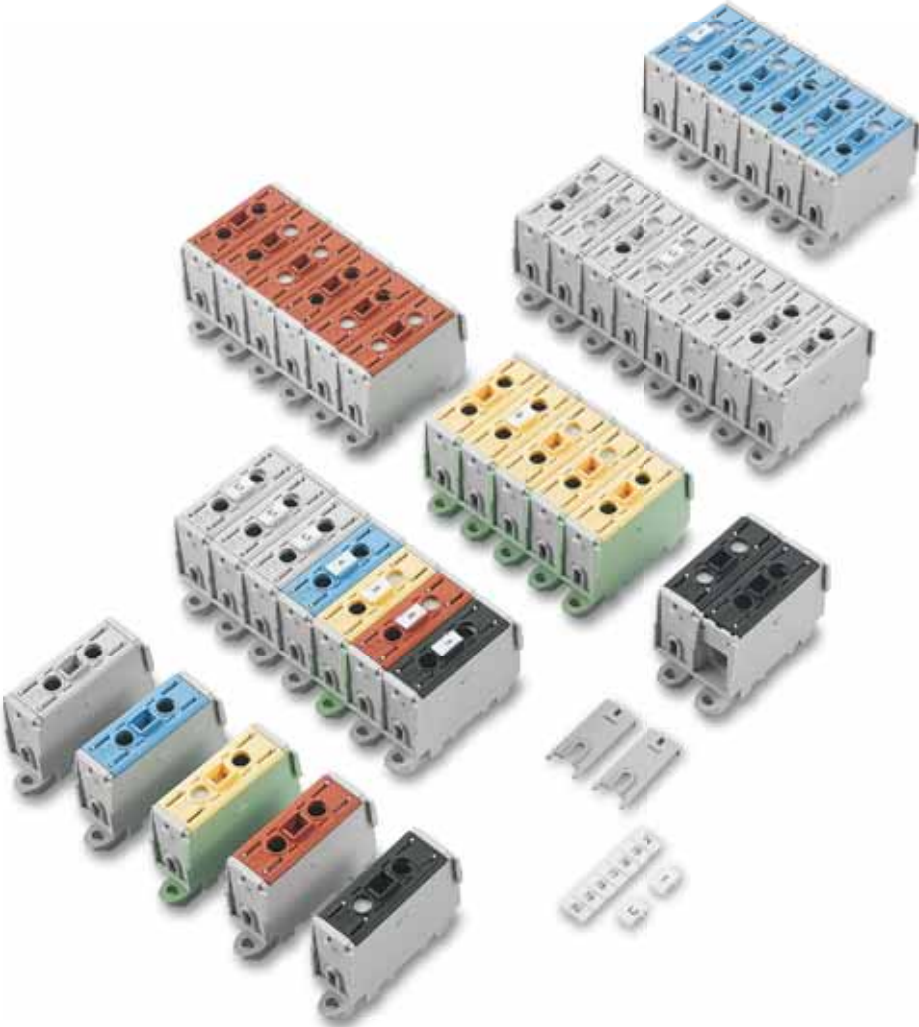
### Mechanical features

Screw heads: Hexagonal  
Mounting: DIN-rail or screws



# Model specification

<b>TRN</b>	<b>50</b>	<b>-</b>	<b>1</b>	<b>1</b>
Product Series	Cable cross Section area		Poles	Housing Color
	50 mm <sup>2</sup>		1 Pole	
				1 Grey
				2 Blue
				3 Yellow/Green
				4 Red
				5 Black



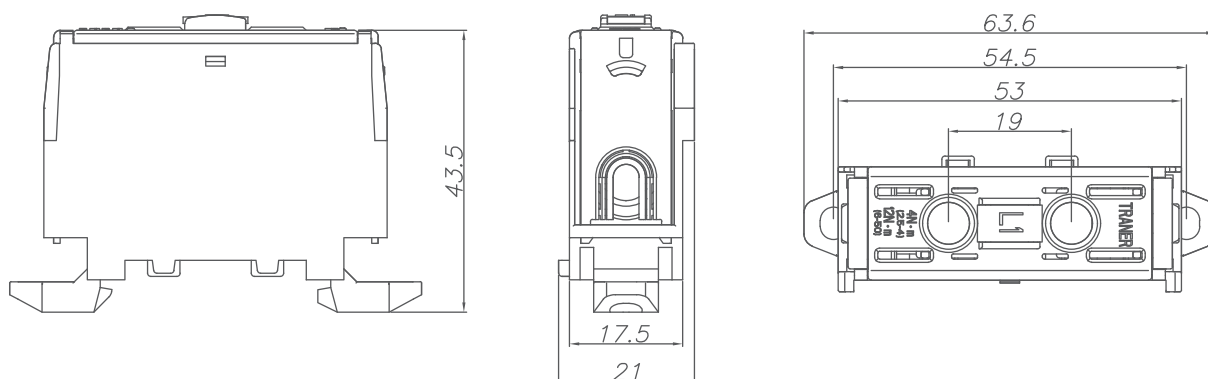


# AL/CU



Product code	Housing color	Conductor (mm <sup>2</sup> )	Nominal current In (A)	Nominal insulation voltage Ui (V)	Screw head hexagon diameter (mm)	Tightening torque (Nm)	Mounting	Unit weight (g)	Inner box package (pcs)	Master carton package (pcs)
TRN 50-11	Grey	1 x Cu 2.5-50 mm <sup>2</sup> 1 x Al 6-50 mm <sup>2</sup>	Cu160A Al145A	1000V	5mm	4 Nm(2.5-4 mm <sup>2</sup> ) 12 Nm(6-50 mm <sup>2</sup> )	Screw or Din-rail	40	10	400
TRN 50-12	Blue									
TRN 50-13	Yellow/Green									
TRN 50-14	Red									
TRN 50-15	Black									

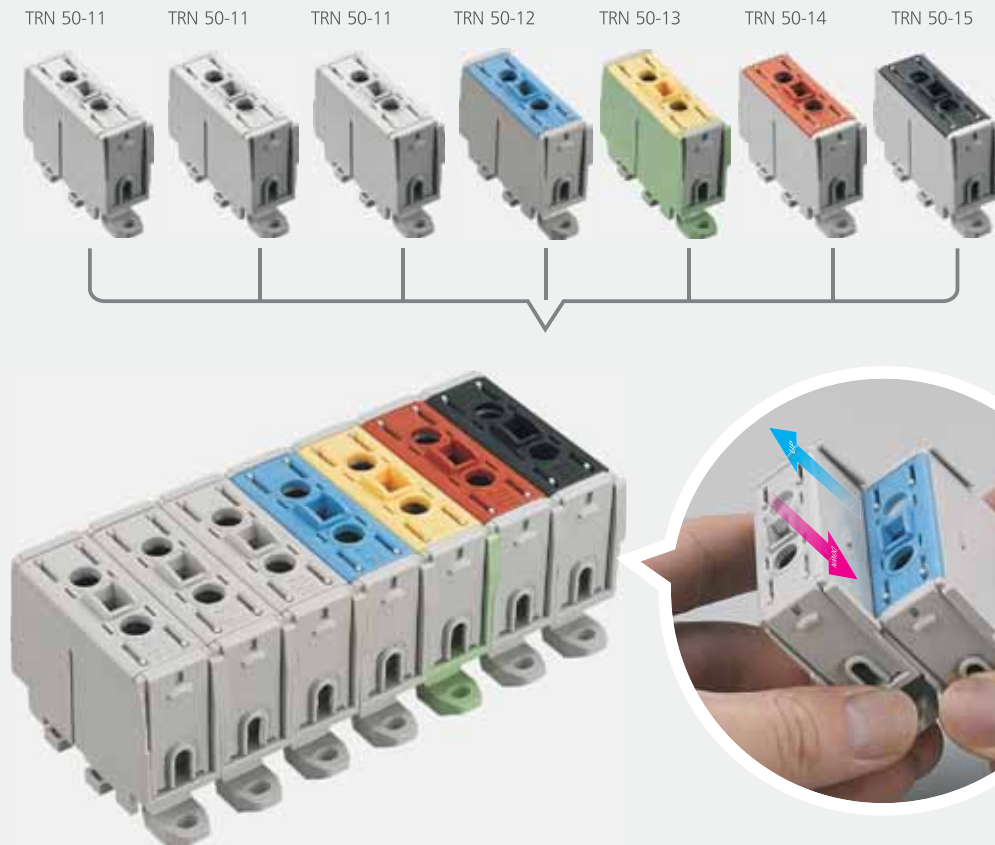
Connector: Class A  
Operating temperature: Max 80°C  
The nominal current in the table are for maximum cross-section cable.





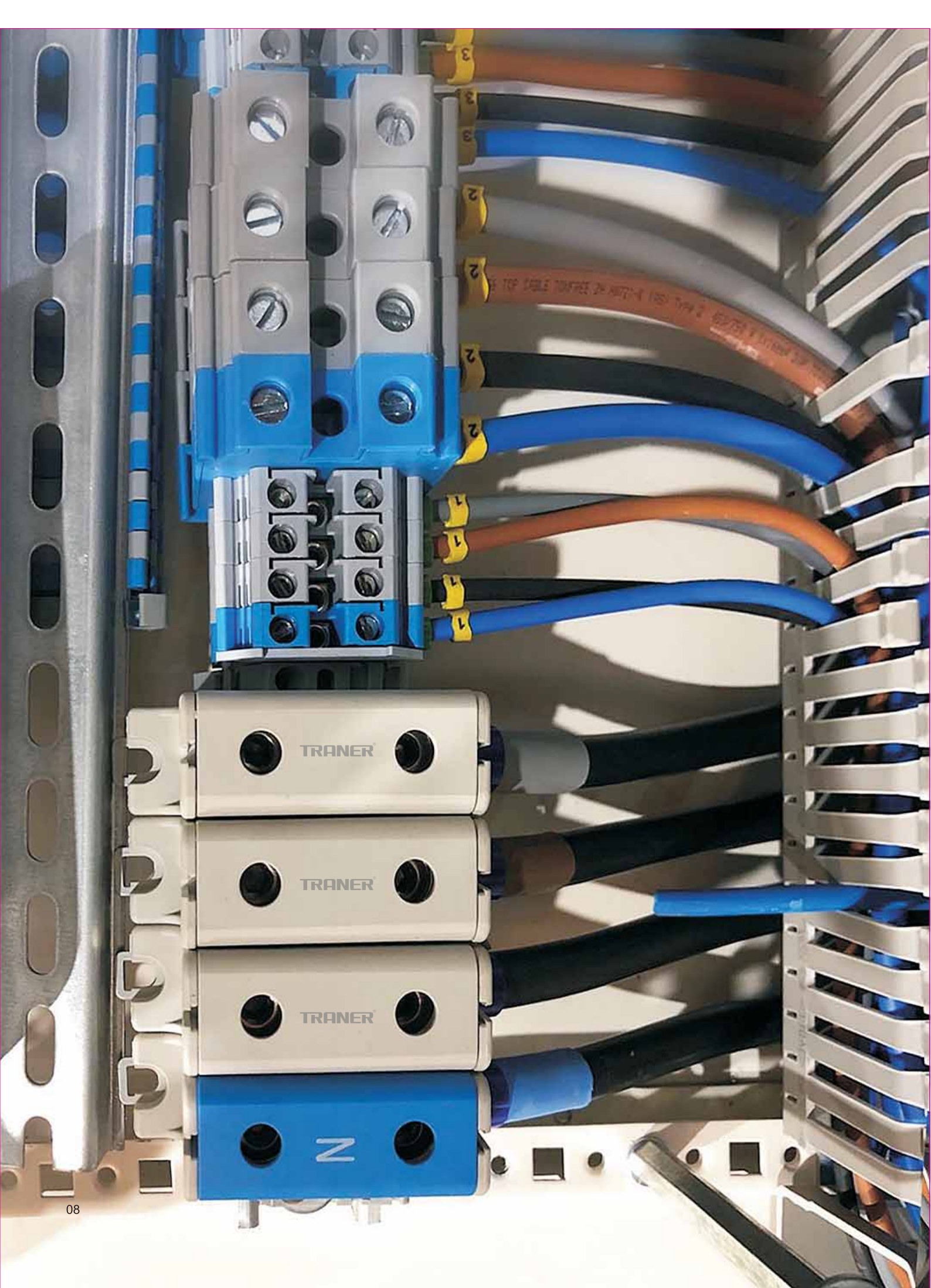
## Add-on design

All the terminals can be connected each other, any color can connect together. Easy to operation.



## Ordering code

Item NO.	Product code	Specification	PCS /CTN	PCS /INNER BOX	INNER BOX /CTN	G.W/CTN (KGS)	CARTON SIZE (CM)
1	TRN 50-11	Add-on type TRN series Al/Cu universal terminal block, 1 pole, acceptable for both Al/Cu wires, 6mm <sup>2</sup> ...50mm <sup>2</sup> , grey					
2	TRN 50-12	Add-on type TRN series Al/Cu universal terminal block, 1 pole, acceptable for both Al/Cu wires, 6mm <sup>2</sup> ...50mm <sup>2</sup> , blue					
3	TRN 50-13	Add-on type TRN series Al/Cu universal terminal block, 1 pole, acceptable for both Al/Cu wires, 6mm <sup>2</sup> ...50mm <sup>2</sup> , yellow/green	400	10	40	17.15	40*29.5*22.7
4	TRN 50-14	Add-on type TRN series Al/Cu universal terminal block, 1 pole, acceptable for both Al/Cu wires, 6mm <sup>2</sup> ...50mm <sup>2</sup> , red					
5	TRN 50-15	Add-on type TRN series Al/Cu universal terminal block, 1 pole, acceptable for both Al/Cu wires, 6mm <sup>2</sup> ...50mm <sup>2</sup> , black					



# Al/Cu universal terminal block

## TR Series

### General/use:

TR series Al/Cu universal terminal block offers the best quality, safety installation features in the market. This universal terminal block designed for copper and aluminum conductor with cross-section up to 240mm<sup>2</sup>.

### Technical features:

- Compact in size
- Quickly and easily mounting with DIN-rail or screws
- Reliable and strong tightening with hexagonal screws
- Reliable housing material polyamide(PA) according to UL 94 standard

### Conformity



### Standards

EN 60947-7-1 / EN 61238-1

### Technical information

Cross-section range: Al 1.5-240mm<sup>2</sup> / Cu 1.5-240mm<sup>2</sup>  
Nominal current range: 75A-425A

### Material

Housing: UL 94 V-0 polyamide(PA)  
Metal body: Tinned aluminum  
Screws: Steel

### Mechanical features

Screw heads: Hexagonal  
Mounting: DIN-rail or screws





Make connection easy

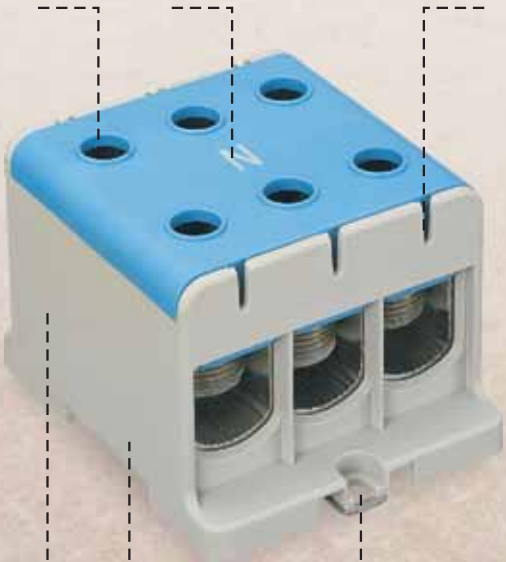
# Allows a connection between Al cable and Cu cable



The hole for screw driver  
Easy installed

Cover with different  
color to indicate Line,  
Neutral, PE

Terminal shroud  
location



Sticker location  
OEM is available

Safe UL 94 V-0 class  
plastic material

DIN-rail  
or screws mounting

© TR series Al/Cu universal terminal block was certified according to standards EN 61238-1 and EN 60947-7-1.

© TR series Al/Cu universal terminal block are shorted circuit tested and certified which is class A terminal. Terminals that have been tested and certified according to EN 61238-1:2003 are divided into Class A and Class B.

Class A terminals are short circuit tested and suitable for both equipment and general use also as feed-in terminals.

Class B terminals are not short circuit tested and can only be used in circuits which are protected with fast acting fuses, not with general use fuse or motor circuit fuses, which are typically use in industrial applications.

TR	50	•	1	-	2
Product Series	Cable cross Section area		Housing color		Ways
	16 mm <sup>2</sup>		1  Grey		1 One way
	50 mm <sup>2</sup>		2  Blue/Grey		2 Two ways
	95 mm <sup>2</sup>		3  Yellow/Green		3 Three ways
	150 mm <sup>2</sup>				
	240 mm <sup>2</sup>				



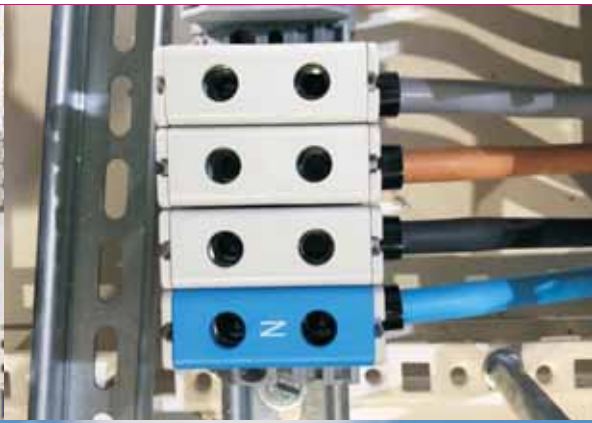


## PRODUCT APPLICATION

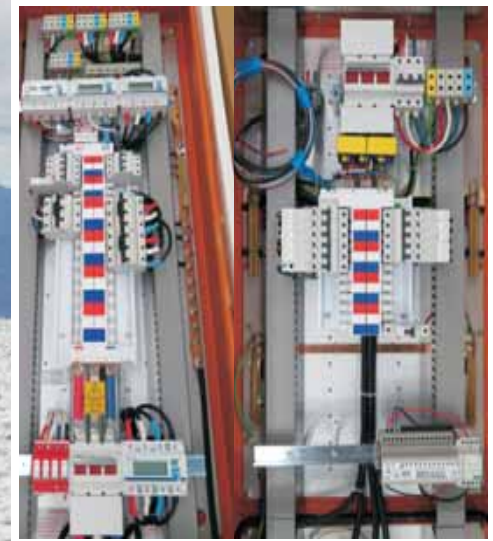
- Electric Power Distribution
- Low Voltage Switch Panel
- LED Solar Street Lighting
- HVAC System
- ... ..







# Application



# Al/Cu universal terminal block

TR series-1 pole 1 way



TR16.1-1



TR16.2-1



TR16.3-1



TR50.1-1



TR50.2-1



TR50.3-1



TR95.1-1



TR95.2-1



TR95.3-1



TR150.1-1



TR150.2-1



TR150.3-1



TR240.1-1



TR240.2-1



TR240.3-1

# Al/Cu universal terminal block

TR series-1 pole 1 way 16 mm<sup>2</sup>



TR16.1-1



TR16.2-1



TR16.3-1

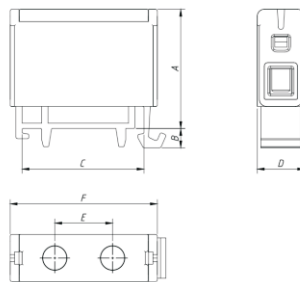
**AL / CU**

Conformity :  
EN 60947-7-1 / EN 61238-1 (Class A)



Product code	Housing Color	Conductor (mm <sup>2</sup> )	Nominal current In (A)	Nominal insulation voltage Ui (V)	Screw head hexagon diameter (mm)	Tightening torque (Nm)	Mounting	Weight (g)	Inner box package (pcs)	Master carton package (pcs)
TR16.1-1	Grey	1xAl/Cu 1.5-16mm <sup>2</sup>	Cu 82A Al 75A	1000V	4mm	3.5 Nm(2.5-6 mm <sup>2</sup> ) 7 Nm(10-16 mm <sup>2</sup> )	DIN-rail	19.5	13	520
TR16.2-1	Blue									
TR16.3-1	Yellow/Green									

Connector : Class A  
Operating temperature :Max. 80°C  
The nominal current in the table are for maximum cross-section cable.



Product code	Dimension					
	A (mm)	B (mm)	C (mm)	D (mm)	E (mm)	F (mm)
TR16.1-1	34	5	35	13.5	16.5	42
TR16.2-1						
TR16.3-1						

ZHEJIANG QIANGNA ELECTRIC CO., LTD.



# Al/Cu universal terminal block

TR series-1 pole 1 way 50 mm<sup>2</sup>



TR50.1-1



TR50.2-1



TR50.3-1

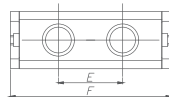
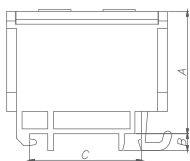
**AL / CU**

Conformity :  
EN 60947-7-1 / EN 61238-1 (Class A)



Product code	Housing Color	Conductor (mm <sup>2</sup> )	Nominal current I <sub>n</sub> (A)	Nominal insulation voltage U <sub>i</sub> (V)	Screw head hexagon diameter (mm)	Tightening torque (Nm)	Mounting	Weight (g)	Inner box package (pcs)	Master carton package (pcs)
TR50.1-1	Grey	1xCu 2.5-50mm <sup>2</sup> 1xAl 6-50mm <sup>2</sup>	Cu 160A Al 145A	1000V	5mm	4 Nm(2.5-4 mm <sup>2</sup> ) 12 Nm(6-50 mm <sup>2</sup> )	DIN-rail	35g	10	400
TR50.2-1	Blue/Grey									
TR50.3-1	Yellow/Green									

Connector : Class A  
Operating temperature :Max. 80°C  
The nominal current in the table are for maximum cross-section cable.



Product code	Dimension					
	A (mm)	B (mm)	C (mm)	D (mm)	E (mm)	F (mm)
TR50.1-1	38	5	35	17.8	20	50
TR50.2-1						
TR50.3-1						

# Al/Cu universal terminal block

TR series-1 pole 1 way 95 mm<sup>2</sup>



TR95.1-1



TR95.2-1



TR95.3-1

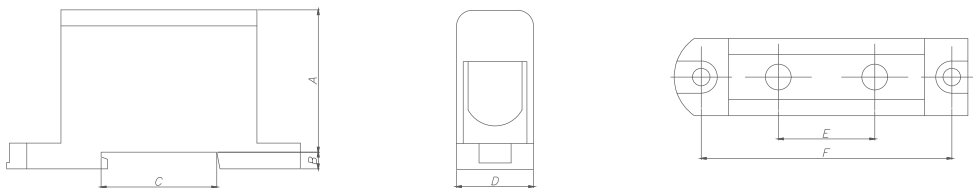
**AL / CU**

Conformity :  
EN 60947-7-1 / EN 61238-1 (Class A)



Product code	Housing Color	Conductor (mm <sup>2</sup> )	Nominal current In (A)	Nominal insulation voltage Ui (V)	Screw head hexagon diameter (mm)	Tightening torque (Nm)	Mounting	Weight (g)	Inner box package (pcs)	Master carton package (pcs)
TR95.1-1	Grey	1xAl/CU 16-95mm <sup>2</sup>	Cu 245A Al 200A	1000V	5mm	20Nm (16-95 mm <sup>2</sup> )	DIN-rail/ Screws	92g	8	192
TR95.2-1	Blue/Grey									
TR95.3-1	Yellow/Green									

Connector : Class A  
Operating temperature :Max. 80°C  
The nominal current in the table are for maximum cross-section cable.



Product code	Dimension					
	A (mm)	B (mm)	C (mm)	D (mm)	E (mm)	F (mm)
TR95.1-1	44	5	36	24	30	77
TR95.2-1						
TR95.3-1						

ZHEJIANG QIANGNA ELECTRIC CO., LTD.

# Al/Cu universal terminal block

TR series-1 pole 1 way 150 mm<sup>2</sup>



TR150.1-1



TR150.2-1



TR150.3-1

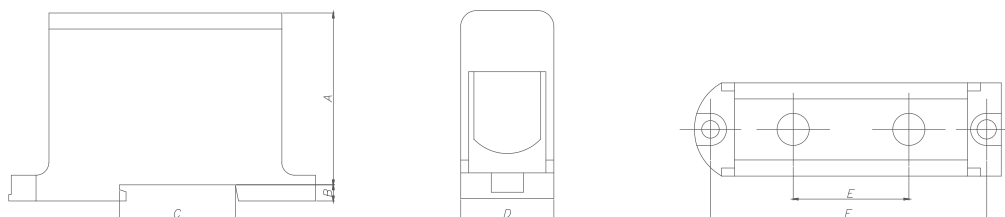
**AL / CU**

Conformity :  
EN 60947-7-1 / EN 61238-1 (Class A)



Product code	Housing Color	Conductor (mm <sup>2</sup> )	Nominal current In (A)	Nominal insulation voltage Ui (V)	Screw head hexagon diameter (mm)	Tightening torque (Nm)	Mounting	Weight (g)	Inner box package (pcs)	Master carton package (pcs)
TR150.1-1	Grey	1xAl / CU 35-150mm <sup>2</sup>	Cu 320A Al 290A	1000V	8mm	20 Nm(35-95 mm <sup>2</sup> ) 30 Nm(120-150 mm <sup>2</sup> )	DIN-rail / Screws	156g	5	100
TR150.2-1	Blue/Grey									
TR150.3-1	Yellow/Green									

Connector : Class A  
Operating temperature :Max. 80°C  
The nominal current in the table are for maximum cross-section cable.



Product code	Dimension					
	A (mm)	B (mm)	C (mm)	D (mm)	E (mm)	F (mm)
TR150.1-1	54	5	36	29	36	87
TR150.2-1						
TR150.3-1						

# Al/Cu universal terminal block

TR series-1 pole 1 way 240 mm<sup>2</sup>



TR240.1-1



TR240.2-1



TR240.3-1

**AL / CU**

Conformity :  
EN 60947-7-1 / EN 61238-1 (Class A)

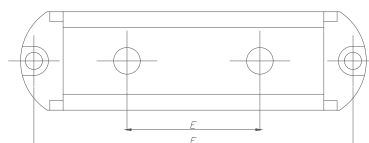
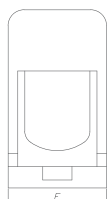
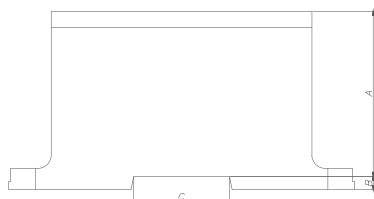


Product code	Housing Color	Conductor (mm <sup>2</sup> )	Nominal current In (A)	Nominal insulation voltage Ui (V)	Screw head hexagon diameter (mm)	Tightening torque (Nm)	Mounting	Weight (g)	Inner box package (pcs)	Master carton package (pcs)
TR240.1-1	Grey	1xAl/CU 35-240mm <sup>2</sup>	Cu 425A Al 380A	1000V	8mm	12 Nm(35-70 mm <sup>2</sup> ) 45 Nm(95-240 mm <sup>2</sup> )	Screws	300g	2	60
TR240.2-1	Blue/Grey									
TR240.3-1	Yellow/Green									

Connector : Class A

Operating temperature :Max. 80°C

The nominal current in the table are for maximum cross-section cable.



Product code	Dimension					
	A (mm)	B (mm)	C (mm)	D (mm)	E (mm)	F (mm)
TR240.1-1	62	5	36	37	50	120
TR240.2-1						
TR240.3-1						

ZHEJIANG QIANGNA ELECTRIC CO., LTD.

# Al/Cu universal terminal block

TR series-1 pole 2 ways



TR50.1-2



TR50.2-2



TR50.3-2



TR95.1-2



TR95.2-2



TR95.3-2



TR150.1-2



TR150.2-2



TR150.3-2



TR240.1-2



TR240.2-2



TR240.3-2



# Al/Cu universal terminal block

TR series-1 pole 2 ways 50 mm<sup>2</sup>



TR50.1-2



TR50.2-2



TR50.3-2

**AL / CU**

Conformity :  
EN 60947-7-1 / EN 61238-1 (Class A)

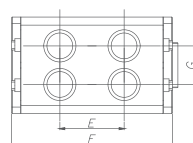
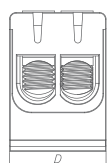
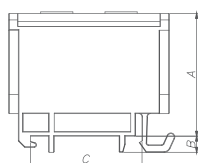


Product code	Housing Color	Conductor (mm <sup>2</sup> )	Nominal current In (A)	Nominal insulation voltage Ui (V)	Screw head hexagon diameter (mm)	Tightening torque (Nm)	Mounting	Weight (g)	Inner box package (pcs)	Master carton package (pcs)
TR50.1-2	Grey	2xCu 2.5-50mm <sup>2</sup> 2xAl 6-50mm <sup>2</sup>	Cu 160A	1000V	5mm	4 Nm(2.5-4 mm <sup>2</sup> ) 12 Nm(6-50 mm <sup>2</sup> )	DIN-rail	60g	6	240
TR50.2-2	Blue/Grey		Al 145A							
TR50.3-2	Yellow/Green									

Connector : Class A

Operating temperature :Max. 80°C

The nominal current in the table are for maximum cross-section cable.



Product code	Dimension						
	A (mm)	B (mm)	C (mm)	D (mm)	E (mm)	F (mm)	G (mm)
TR50.1-2	38	5	35	30	20	50	12
TR50.2-2							
TR50.3-2							

ZHEJIANG QIANGNA ELECTRIC CO., LTD.

# Al/Cu universal terminal block

TR series-1 pole 2 ways 95 mm<sup>2</sup>



TR95.1-2



TR95.2-2



TR95.3-2

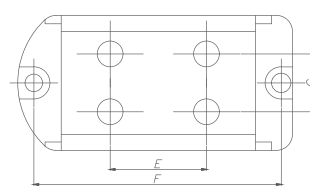
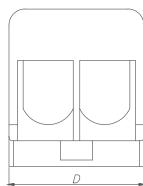
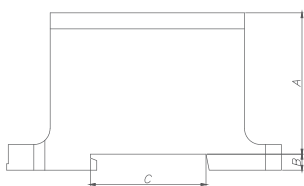
**AL / CU**

Conformity :  
EN 60947-7-1 / EN 61238-1 (Class A)



Product code	Housing Color	Conductor (mm <sup>2</sup> )	Nominal current I <sub>n</sub> (A)	Nominal insulation voltage U <sub>i</sub> (V)	Screw head hexagon diameter (mm)	Tightening torque (Nm)	Mounting	Weight (g)	Inner box package (pcs)	Master carton package (pcs)
TR95.1-2	Grey	2xAl/Cu 16-95mm <sup>2</sup>	Cu 245A Al 200A	1000V	5mm	20Nm (16-95 mm <sup>2</sup> )	DIN-rail / Screws	164g	3	108
TR95.2-2	Blue/Grey									
TR95.3-2	Yellow/Green									

Connector : Class A  
Operating temperature :Max. 80°C  
The nominal current in the table are for maximum cross-section cable.



Product code	Dimension						
	A (mm)	B (mm)	C (mm)	D (mm)	E (mm)	F (mm)	G (mm)
TR95.1-2	44	5	36	42	30	77	18
TR95.2-2							
TR95.3-2							

# Al/Cu universal terminal block

TR series-1 pole 2 ways 150 mm<sup>2</sup>



TR150.1-2



TR150.2-2



TR150.3-2

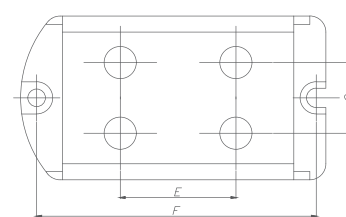
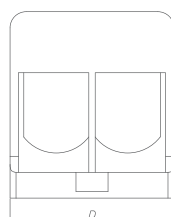
**AL / CU**

Conformity :  
EN 60947-7-1 / EN 61238-1 (Class A)



Product code	Housing Color	Conductor (mm <sup>2</sup> )	Nominal current In (A)	Nominal insulation voltage Ui (V)	Screw head hexagon diameter (mm)	Tightening torque (Nm)	Mounting	Weight (g)	Inner box package (pcs)	Master carton package (pcs)
TR150.1-2	Grey	2xAl/Cu 35-150mm <sup>2</sup>	Cu 320A Al 290A	1000V	8mm	20 Nm(35-95 mm <sup>2</sup> ) 30 Nm(120-150 mm <sup>2</sup> )	DIN-rail/ Screws	288g	2	64
TR150.2-2	Blue/Grey									
TR150.3-2	Yellow/Green									

Connector : Class A  
Operating temperature :Max. 80°C  
The nominal current in the table are for maximum cross-section cable.



Product code	Dimension						
	A (mm)	B (mm)	C (mm)	D (mm)	E (mm)	F (mm)	G (mm)
TR150.1-2	54	5	36	51	36	87	22
TR150.2-2							
TR150.3-2							

ZHEJIANG QIANGNA ELECTRIC CO., LTD.

# Al/Cu universal terminal block

TR series-1 pole 2 ways 240 mm<sup>2</sup>



TR240.1-2



TR240.2-2



TR240.3-2

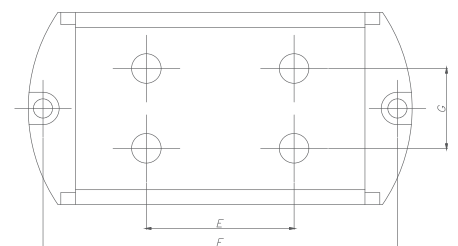
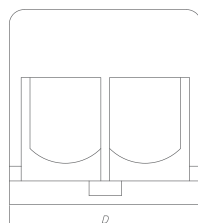
**AL / CU**

Conformity :  
EN 60947-7-1 / EN 61238-1 (Class A)



Product code	Housing Color	Conductor (mm <sup>2</sup> )	Nominal current I <sub>n</sub> (A)	Nominal insulation voltage U <sub>i</sub> (V)	Screw head hexagon diameter (mm)	Tightening torque (Nm)	Mounting	Weight (g)	Inner box package (pcs)	Master carton package (pcs)
TR240.1-2	Grey	2xAl/Cu 35-240mm <sup>2</sup>	Cu 425A Al 380A	1000V	8mm	12 Nm(35-70 mm <sup>2</sup> ) 45 Nm(95-240 mm <sup>2</sup> )	Screws	543g	1	30
TR240.2-2	Blue/Grey									
TR240.3-2	Yellow/Green									

Connector : Class A  
Operating temperature :Max. 80°C  
The nominal current in the table are for maximum cross-section cable.



Product code	Dimension						
	A (mm)	B (mm)	C (mm)	D (mm)	E (mm)	F (mm)	G (mm)
TR240.1-2	62	5	36	65	50	120	27
TR240.2-2							
TR240.3-2							



# Al/Cu universal terminal block

TR series-1 pole 3 ways



TR50.1-3



TR50.2-3



TR50.3-3



TR95.1-3



TR95.2-3



TR95.3-3



TR150.1-3



TR150.2-3



TR150.3-3



TR240.1-3



TR240.2-3



TR240.3-3

# Al/Cu universal terminal block

TR series-1 pole 3 ways 50 mm<sup>2</sup>



TR50.1-3



TR50.2-3



TR50.3-3

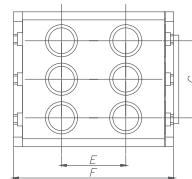
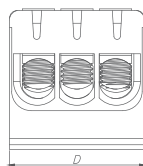
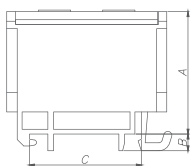
**AL / CU**

Conformity :  
EN 60947-7-1 / EN 61238-1 (Class A)



Product code	Housing Color	Conductor (mm <sup>2</sup> )	Nominal current I <sub>n</sub> (A)	Nominal insulation voltage U <sub>i</sub> (V)	Screw head hexagon diameter (mm)	Tightening torque (Nm)	Mounting	Weight (g)	Inner box package (pcs)	Master carton package (pcs)
TR50.1-3	Grey	3xCu 2.5-50mm <sup>2</sup> 3xAl 6-50mm <sup>2</sup>	Cu160A	1000V	5mm	4 Nm(2.5-4 mm <sup>2</sup> ) 12 Nm(6-50 mm <sup>2</sup> )	DIN-rail	86g	4	160
TR50.2-3	Blue/Grey		Al 145A							
TR50.3-3	Yellow/Green									

Connector : Class A  
Operating temperature :Max. 80°C  
The nominal current in the table are for maximum cross-section cable.



Product code	Dimension						
	A (mm)	B (mm)	C (mm)	D (mm)	E (mm)	F (mm)	G (mm)
TR50.1-3	38	5	35	42	20	50	24
TR50.2-3							
TR50.3-3							

ZHEJIANG QIANGNA ELECTRIC CO., LTD.

# Al/Cu universal terminal block

TR series-1 pole 3 ways 95 mm<sup>2</sup>



TR95.1-3



TR95.2-3



TR95.3-3

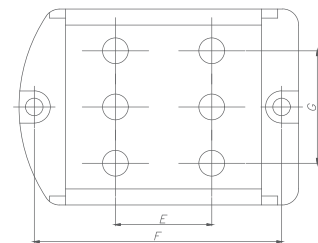
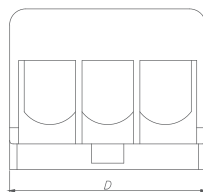
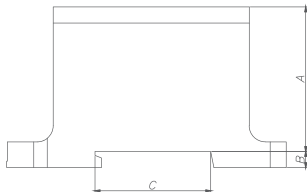
**AL / CU**

Conformity :  
EN 60947-7-1 / EN 61238-1 (Class A)



Product code	Housing Color	Conductor (mm <sup>2</sup> )	Nominal current In (A)	Nominal insulation voltage Ui (V)	Screw head hexagon diameter (mm)	Tightening torque (Nm)	Mounting	Weight (g)	Inner box package (pcs)	Master carton package (pcs)
TR95.1-3	Grey	3xAl/Cu 16-95mm <sup>2</sup>	Cu 245A Al 200A	1000V	5mm	20Nm (16-95 mm <sup>2</sup> )	DIN-rail / Screws	237g	2	64
TR95.2-3	Blue/Grey									
TR95.3-3	Yellow/Green									

Connector : Class A  
Operating temperature :Max. 80°C  
The nominal current in the table are for maximum cross-section cable.



Product code	Dimension						
	A (mm)	B (mm)	C (mm)	D (mm)	E (mm)	F (mm)	G (mm)
TR95.1-3	44	5	36	60	30	77	36
TR95.2-3							
TR 95.3-3							

ZHEJIANG QIANNA ELECTRIC CO., LTD.

# Al/Cu universal terminal block

TR series-1 pole 3 ways 150 mm<sup>2</sup>



TR150.1-3



TR150.2-3



TR150.3-3

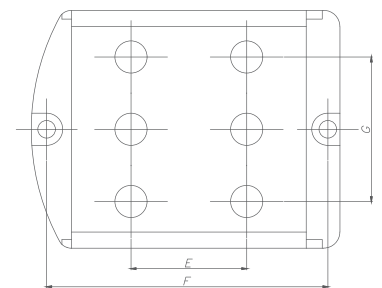
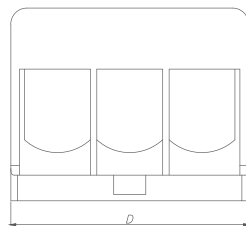
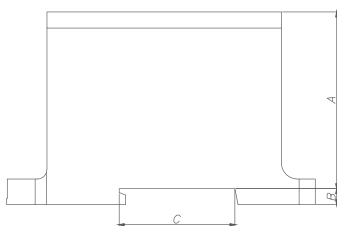
**AL / CU**

Conformity :  
EN 60947-7-1 / EN 61238-1 (Class A)



Product code	Housing Color	Conductor (mm <sup>2</sup> )	Nominal current In (A)	Nominal insulation voltage Ui (V)	Screw head hexagon diameter (mm)	Tightening torque (Nm)	Mounting	Weight (g)	Inner box package (pcs)	Master carton package (pcs)
TR150.1-3	Grey	3xAl/Cu 35-150mm <sup>2</sup>	Cu 320A Al 290A	1000V	8mm	20 Nm(35-95 mm <sup>2</sup> ) 30 Nm(120-150 mm <sup>2</sup> )	DIN-rail / Screws	418g	2	44
TR150.2-3	Blue/Grey									
TR150.3-3	Yellow/Green									

Connector : Class A  
Operating temperature :Max. 80°C  
The nominal current in the table are for maximum cross-section cable.



Product code	Dimension						
	A (mm)	B (mm)	C (mm)	D (mm)	E (mm)	F (mm)	G (mm)
TR150.1-3	54	5	36	74	36	87	44
TR150.2-3							
TR150.3-3							



# Al/Cu universal terminal block

TR series-1 pole 3 ways 240 mm<sup>2</sup>



TR240.1-3



TR240.2-3



TR240.3-3

**AL / CU**

Conformity :  
EN 60947-7-1 / EN 61238-1 (Class A)

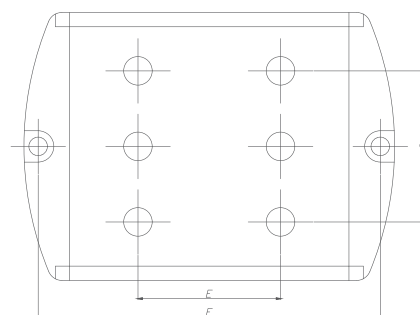
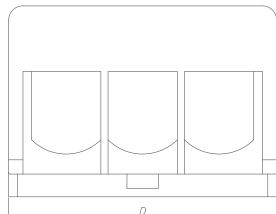


Product code	Housing Color	Conductor (mm <sup>2</sup> )	Nominal current In (A)	Nominal insulation voltage Ui (V)	Screw head hexagon diameter (mm)	Tightening torque (Nm)	Mounting	Weight (g)	Inner box package (pcs)	Master carton package (pcs)
TR240.1-3	Grey	3xAl/Cu 35-240mm <sup>2</sup>	Cu 425A Al 380A	1000V	8mm	12 Nm(35-70 mm <sup>2</sup> ) 45 Nm(95-240 mm <sup>2</sup> )	Screws	787g	1	22
TR240.2-3	Blue/Grey									
TR240.3-3	Yellow/Green									

Connector : Class A

Operating temperature :Max. 80°C

The nominal current in the table are for maximum cross-section cable.



Product code	Dimension						
	A (mm)	B (mm)	C (mm)	D (mm)	E (mm)	F (mm)	G (mm)
TR240.1-3	62	5	36	94	50	120	54
TR240.2-3							
TR240.3-3							

## Terminal shroud for TR series Al/Cu universal terminal block



Terminal shroud are offered as accessories for TR series Al/Cu universal terminal block. They are used for blanking unused connection space and for maintaining IP20 protection class.

Item NO.	Product code	Housing Color	Material	Description
1	TR50-C	Grey	PA 66	Terminal shroud for TR 50 series Al/Cu universal terminal block TR 50.1-1, TR 50.2-1, TR 50.3-1 TR 50.1-2, TR 50.2-2, TR 50.3-2 TR 50.1-3, TR 50.2-3, TR 50.3-3
2	TR95-C	Grey	PA 66	Terminal shroud for TR 95 series Al/Cu universal terminal block TR 95.1-1, TR 95.2-1, TR 95.3-1 TR 95.1-2, TR 95.2-2, TR 95.3-2 TR 95.1-3, TR 95.2-3, TR 95.3-3
3	TR150-C	Grey	PA 66	Terminal shroud for TR 150 series Al/Cu universal terminal block TR 150.1-1, TR 150.2-1, TR 150.3-1 TR 150.1-2, TR 150.2-2, TR 150.3-2 TR 150.1-3, TR 150.2-3, TR 150.3-3
4	TR240-C	Grey	PA 66	Terminal shroud for TR 240 series Al/Cu universal terminal block TR 240.1-1, TR 240.2-1, TR 240.3-1 TR 240.1-2, TR 240.2-2, TR 240.3-2 TR 240.1-3, TR 240.2-3, TR 240.3-3

# Terminal marker for TR series & TRN series Al/Cu universal terminal block

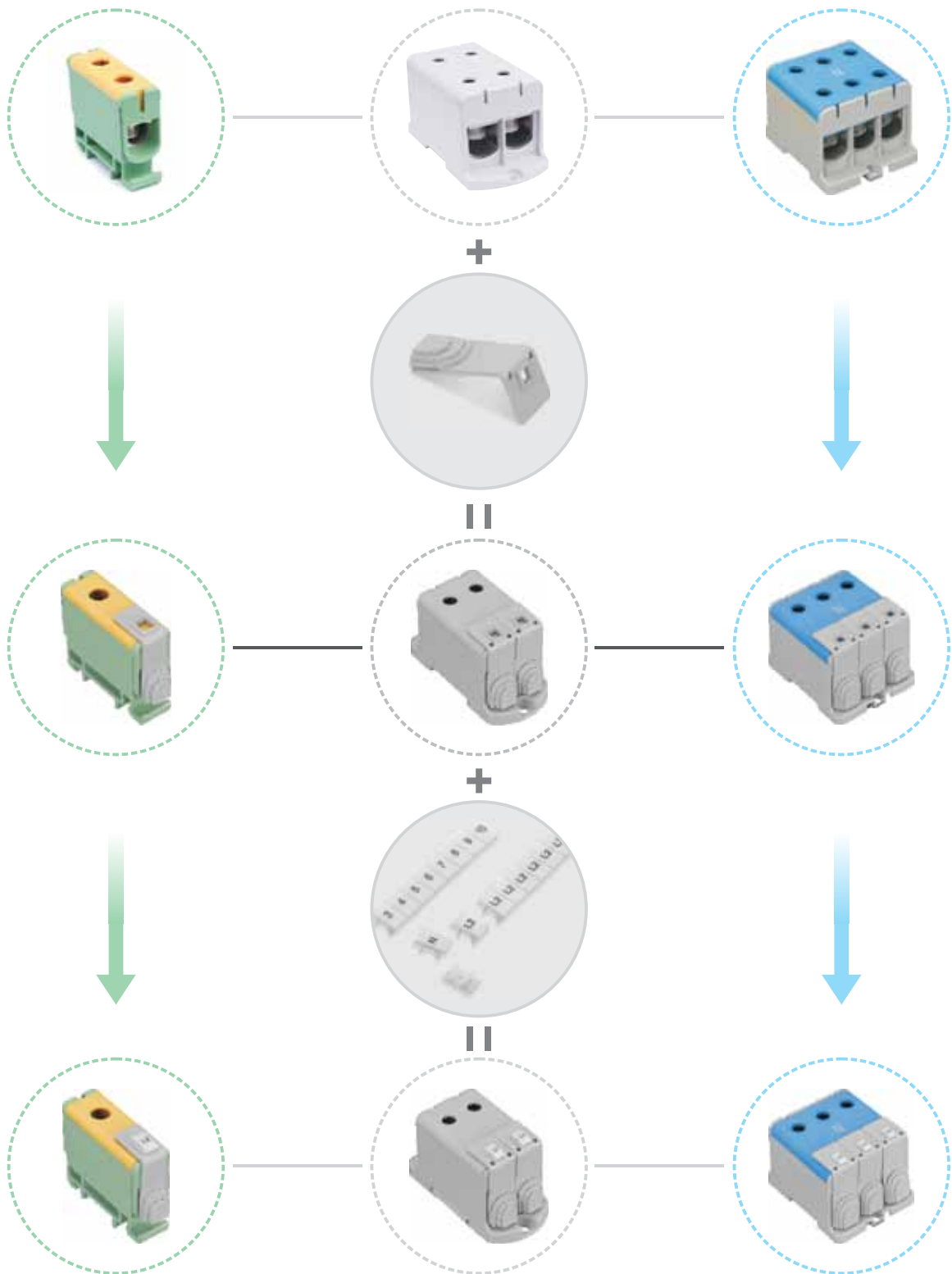


**Remark:**

- 1.Each strip contains 10 markers
- 2.If no special requirement,the original color of all the marker are white.

Terminal marker are offered as accessories for TR series Al/Cu universal terminal block.  
It is to indicate each position with its exact function and to caution people avoid any mis-operation.

Item NO.	Product code	Markering	Marker size	Description	One bag package
1	TR-BL		1CM *0.5CM	TR terminal-shroud marker blue	10 strips
2	TR-RD		1CM *0.5CM	TR terminal-shroud marker red	10 strips
3	TR-BLANG		1CM *0.5CM	TR terminal-shroud marker white	10 strips
4	TR-L	L	1CM *0.5CM	TR terminal-shroud marker L	10 strips
5	TR-L1	L1	1CM *0.5CM	TR terminal-shroud marker L1	10 strips
6	TR-L2	L2	1CM *0.5CM	TR terminal-shroud marker L2	10 strips
7	TR-L3	L3	1CM *0.5CM	TR terminal-shroud marker L3	10 strips
8	TR-N	N	1CM *0.5CM	TR terminal-shroud marker N	10 strips
9	TR-PE	PE	1CM *0.5CM	TR terminal-shroud marker PE	10 strips
10	TR-PEN	PEN	1CM *0.5CM	TR terminal-shroud marker PEN	10 strips
11	TR-PLUS	+	1CM *0.5CM	TR terminal-shroud marker symbol +	10 strips
12	TR-MIN	-	1CM *0.5CM	TR terminal-shroud marker symbol -	10 strips
13	TR-R	R	1CM *0.5CM	TR terminal-shroud marker R	10 strips
14	TR-S	S	1CM *0.5CM	TR terminal-shroud marker S	10 strips
15	TR-T	T	1CM *0.5CM	TR terminal-shroud marker T	10 strips
16	TR-U	U	1CM *0.5CM	TR terminal-shroud marker U	10 strips
17	TR-V	V	1CM *0.5CM	TR terminal-shroud marker V	10 strips
18	TR-W	W	1CM *0.5CM	TR terminal-shroud marker W	10 strips
19	TR-N1	1	1CM *0.5CM	TR terminal-shroud marker NO.1	10 strips
20	TR-N2	2	1CM *0.5CM	TR terminal-shroud marker NO.2	10 strips
21	TR-N3	3	1CM *0.5CM	TR terminal-shroud marker NO.3	10 strips
22	TR-N4	4	1CM *0.5CM	TR terminal-shroud marker NO.4	10 strips
23	TR-N5	5	1CM *0.5CM	TR terminal-shroud marker NO.5	10 strips
24	TR-N6	6	1CM *0.5CM	TR terminal-shroud marker NO.6	10 strips
25	TR-N7	7	1CM *0.5CM	TR terminal-shroud marker NO.7	10 strips
26	TR-N8	8	1CM *0.5CM	TR terminal-shroud marker NO.8	10 strips
27	TR-N9	9	1CM *0.5CM	TR terminal-shroud marker NO.9	10 strips
28	TR-N10	10	1CM *0.5CM	TR terminal-shroud marker NO.10	10 strips
29	TR-EARTH	⏚	1CM *0.5CM	TR terminal-shroud marker symbol ground	10 strips
30	TR-CEARTH	⏚	1CM *0.5CM	TR terminal-shroud marker symbol ground-circle	10 strips





# Ordering code





## ● TR series Al/Cu universal terminal block

Item NO.	Product code	Specification	PCS /CTN	PCS /INNER BOX	INNER BOX /CTN	G.W/CTN (KGS)	SIZE/CTN (CM)
1	TR16.1-1	Al/Cu universal terminal block, 1 pole1 way, AL/CU wires,1.5mm <sup>2</sup> .....16mm <sup>2</sup> ,grey					
2	TR16.2-1	Al/Cu universal terminal block, 1 pole1 way, AL/CU wires,1.5mm <sup>2</sup> .....16mm <sup>2</sup> ,blue/grey	520	13	40	19.5	40*29.5*22.7
3	TR16.3-1	Al/Cu universal terminal block, 1 pole1 way, AL/CU wires,1.5mm <sup>2</sup> .....16mm <sup>2</sup> ,yellow/green					
4	TR50.1-1	1 pole 1 way,universal terminal block,AL/CU wires,6mm <sup>2</sup> .....50mm <sup>2</sup> ,grey					
5	TR50.2-1	1 pole 1 way,universal terminal block,AL/CU wires,6mm <sup>2</sup> .....50mm <sup>2</sup> ,blue/grey	400	10	40	17.15	40*29.5*22.7
6	TR50.3-1	1 pole 1 way,universal terminal block,AL/CU wires,6mm <sup>2</sup> .....50mm <sup>2</sup> ,yellow/green					
7	TR95.1-1	1 pole 1 way,universal terminal block,AL/CU wires,16mm <sup>2</sup> ....95mm <sup>2</sup> ,grey					
8	TR95.2-1	1 pole 1 way,universal terminal block,AL/CU wires,16mm <sup>2</sup> ....95mm <sup>2</sup> ,blue/grey	192	8	24	19.4	40*29.5*22.7
9	TR95.3-1	1 pole 1 way,universal terminal block,AL/CU wires,16mm <sup>2</sup> ....95mm <sup>2</sup> ,yellow/green					
10	TR150.1-1	1 pole 1 way,universal terminal block,AL/CU wires,35mm <sup>2</sup> ....150mm <sup>2</sup> ,grey					
11	TR150.2-1	1 pole 1 way,universal terminal block,AL/CU wires,35mm <sup>2</sup> ....150mm <sup>2</sup> ,blue/grey	100	5	20	21	40*29.5*22.7
12	TR150.3-1	1 pole 1 way,universal terminal block,AL/CU wires,35mm <sup>2</sup> ....150mm <sup>2</sup> ,yellow/green					
13	TR240.1-1	1 pole 1 way,universal terminal block,AL/CU wires,35mm <sup>2</sup> ....240mm <sup>2</sup> ,grey					
14	TR240.2-1	1 pole 1 way,universal terminal block,AL/CU wires,35mm <sup>2</sup> ....240mm <sup>2</sup> ,blue/grey	60	2	30	17	40*29.5*22.7
15	TR240.3-1	1 pole 1 way,universal terminal block,AL/CU wires,35mm <sup>2</sup> ....240mm <sup>2</sup> ,yellow/green					
16	TR50.1-2	1 pole 2 ways,universal terminal block,AL/CU wires,6mm <sup>2</sup> ....50mm <sup>2</sup> ,grey					
17	TR50.2-2	1 pole 2 ways,universal terminal block,AL/CU wires,6mm <sup>2</sup> ....50mm <sup>2</sup> ,blue/grey	240	6	40	15.7	40*29.5*22.7
18	TR50.3-2	1 pole 2 ways,universal terminal block,AL/CU wires,6mm <sup>2</sup> ....50mm <sup>2</sup> ,yellow/green					
19	TR95.1-2	1 pole 2 ways,universal terminal block,AL/CU wires,16mm <sup>2</sup> ....95mm <sup>2</sup> ,grey					
20	TR95.2-2	1 pole 2 ways,universal terminal block,AL/CU wires,16mm <sup>2</sup> ....95mm <sup>2</sup> ,blue/grey	108	3	36	19.4	40*29.5*22.7
21	TR95.3-2	1 pole 2 ways,universal terminal block,AL/CU wires,16mm <sup>2</sup> ....95mm <sup>2</sup> ,yellow/green					
22	TR150.1-2	1 pole 2 ways,universal terminal block,AL/CU wires,35mm <sup>2</sup> ....150mm <sup>2</sup> ,grey					
23	TR150.2-2	1 pole 2 ways,universal terminal block,AL/CU wires,35mm <sup>2</sup> ....150mm <sup>2</sup> ,blue/grey	64	2	32	16.8	40*29.5*22.7
24	TR150.3-2	1 pole 2 ways,universal terminal block,AL/CU wires,35mm <sup>2</sup> ....150mm <sup>2</sup> ,yellow/green					
25	TR240.1-2	1 pole 2 ways,universal terminal block,AL/CU wires,35mm <sup>2</sup> ....240mm <sup>2</sup> ,grey					
26	TR240.2-2	1 pole 2 ways,universal terminal block,AL/CU wires,35mm <sup>2</sup> ....240mm <sup>2</sup> ,blue/grey	30	1	30	17	40*29.5*22.7
27	TR240.3-2	1 pole 2 ways,universal terminal block,AL/CU wires,35mm <sup>2</sup> ....240mm <sup>2</sup> ,yellow/green					
28	TR50.1-3	1 pole 3 ways,universal terminal block,AL/CU wires,6mm <sup>2</sup> ....50mm <sup>2</sup> ,grey					
29	TR50.2-3	1 pole 3 ways,universal terminal block,AL/CU wires,6mm <sup>2</sup> ....50mm <sup>2</sup> ,blue/grey	160	4	40	14.75	40*29.5*22.7
30	TR50.3-3	1 pole 3 ways,universal terminal block,AL/CU wires,6mm <sup>2</sup> ....50mm <sup>2</sup> ,yellow/green					
31	TR95.1-3	1 pole 3 ways,universal terminal block,AL/CU wires,16mm <sup>2</sup> ....95mm <sup>2</sup> ,grey					
32	TR95.2-3	1 pole 3 ways,universal terminal block,AL/CU wires,16mm <sup>2</sup> ....95mm <sup>2</sup> ,blue/grey	64	2	32	18.5	40*29.5*22.7
33	TR95.3-3	1 pole 3 ways,universal terminal block,AL/CU wires,16mm <sup>2</sup> ....95mm <sup>2</sup> ,yellow/green					
34	TR150.1-3	1 pole 3 ways,universal terminal block,AL/CU wires,35mm <sup>2</sup> ....150mm <sup>2</sup> ,grey					
35	TR150.2-3	1 pole 3 ways,universal terminal block,AL/CU wires,35mm <sup>2</sup> ....150mm <sup>2</sup> ,blue/grey	44	2	22	20	40*29.5*22.7
36	TR150.3-3	1 pole 3 ways,universal terminal block,AL/CU wires,35mm <sup>2</sup> ....150mm <sup>2</sup> ,yellow/green					
37	TR240.1-3	1 pole 3 ways,universal terminal block,AL/CU wires,35mm <sup>2</sup> ....240mm <sup>2</sup> ,grey					
38	TR240.2-3	1 pole 3 ways,universal terminal block,AL/CU wires,35mm <sup>2</sup> ....240mm <sup>2</sup> ,blue/grey	22	1	22	19	40*29.5*22.7
39	TR240.3-3	1 pole 3 ways,universal terminal block,AL/CU wires,35mm <sup>2</sup> ....240mm <sup>2</sup> ,yellow/green					

## ● Accessories-Terminal shroud

Item NO.	Product code	Specification	PCS /CTN	PCS /BAG	BAGS /INNER BOX	PCS /INNER BOX	INNER BOX /CTN	G.W/CTN (KGS)	SIZE/CTN (CM)
1	TR50-C	Terminal shroud,For TR 50 series one way,two ways, three ways Al/Cu universal terminal block	2700	5	12	60	45	5.1	40*29.5*22.7
2	TR95-C	Terminal shroud,For TR 95 series one way,two ways, three ways Al/Cu universal terminal block	2025	5	9	45	45	6.1	40*29.5*22.7
3	TR150-C	Terminal shroud,For TR 150 series one way,two ways, three ways Al/Cu universal terminal block	1350	5	6	30	45	6.4	40*29.5*22.7
4	TR240-C	Terminal shroud,For TR 240 series one way,two ways, three ways Al/Cu universal terminal block	900	5	4	20	45	6.1	40*29.5*22.7

## ● Accessories-Terminal marker

Item NO.	Type	Markering	Marker size	Description	PCS/STRIP	STRIPS/BAG	MINIMUM ORDER QUANTITY
1	TR-BL		1CM *0.5CM	TR terminal-shroud marker blue	10 PCS	10 strips	10000 PCS
2	TR-RD		1CM *0.5CM	TR terminal-shroud marker red	10 PCS	10 strips	10000 PCS
3	TR-BLANG		1CM *0.5CM	TR terminal-shroud marker white	10 PCS	10 strips	10000 PCS
4	TR-L	L	1CM *0.5CM	TR terminal-shroud marker L	10 PCS	10 strips	10000 PCS
5	TR-L1	L1	1CM *0.5CM	TR terminal-shroud marker L1	10 PCS	10 strips	10000 PCS
6	TR-L2	L2	1CM *0.5CM	TR terminal-shroud marker L2	10 PCS	10 strips	10000 PCS
7	TR-L3	L3	1CM *0.5CM	TR terminal-shroud marker L3	10 PCS	10 strips	10000 PCS
8	TR-N	N	1CM *0.5CM	TR terminal-shroud marker N	10 PCS	10 strips	10000 PCS
9	TR-PE	PE	1CM *0.5CM	TR terminal-shroud marker PE	10 PCS	10 strips	10000 PCS
10	TR-PEN	PEN	1CM *0.5CM	TR terminal-shroud marker PEN	10 PCS	10 strips	10000 PCS
11	TR-PLUS	+	1CM *0.5CM	TR terminal-shroud marker symbol +	10 PCS	10 strips	10000 PCS
12	TR-MIN	-	1CM *0.5CM	TR terminal-shroud marker symbol -	10 PCS	10 strips	10000 PCS
13	TR-R	R	1CM *0.5CM	TR terminal-shroud marker R	10 PCS	10 strips	10000 PCS
14	TR-S	S	1CM *0.5CM	TR terminal-shroud marker S	10 PCS	10 strips	10000 PCS
15	TR-T	T	1CM *0.5CM	TR terminal-shroud marker T	10 PCS	10 strips	10000 PCS
16	TR-U	U	1CM *0.5CM	TR terminal-shroud marker U	10 PCS	10 strips	10000 PCS
17	TR-V	V	1CM *0.5CM	TR terminal-shroud marker V	10 PCS	10 strips	10000 PCS
18	TR-W	W	1CM *0.5CM	TR terminal-shroud marker W	10 PCS	10 strips	10000 PCS
19	TR-N1	1	1CM *0.5CM	TR terminal-shroud marker NO.1	10 PCS	10 strips	10000 PCS
20	TR-N2	2	1CM *0.5CM	TR terminal-shroud marker NO.2	10 PCS	10 strips	10000 PCS
21	TR-N3	3	1CM *0.5CM	TR terminal-shroud marker NO.3	10 PCS	10 strips	10000 PCS
22	TR-N4	4	1CM *0.5CM	TR terminal-shroud marker NO.4	10 PCS	10 strips	10000 PCS
23	TR-N5	5	1CM *0.5CM	TR terminal-shroud marker NO.5	10 PCS	10 strips	10000 PCS
24	TR-N6	6	1CM *0.5CM	TR terminal-shroud marker NO.6	10 PCS	10 strips	10000 PCS
25	TR-N7	7	1CM *0.5CM	TR terminal-shroud marker NO.7	10 PCS	10 strips	10000 PCS
26	TR-N8	8	1CM *0.5CM	TR terminal-shroud marker NO.8	10 PCS	10 strips	10000 PCS
27	TR-N9	9	1CM *0.5CM	TR terminal-shroud marker NO.9	10 PCS	10 strips	10000 PCS
28	TR-N10	10	1CM *0.5CM	TR terminal-shroud marker NO.10	10 PCS	10 strips	10000 PCS
29	TR-EARTH		1CM *0.5CM	TR terminal-shroud marker symbol ground	10 PCS	10 strips	10000 PCS
30	TR-CEARTH		1CM *0.5CM	TR terminal-shroud marker symbol ground-circle	10 PCS	10 strips	10000 PCS

## PRODUCT APPLICATION

Electric Power Distribution



Low Voltage Switch Panel



LED Solar Street Lighting



HVAC System



Pumping



Household Appliances



Since 1990

# Marketing And Service



# TRANER<sup>®</sup>

Since 1990

**ZHEJIANG QIANGNA ELECTRIC CO.,LTD.**

ADD: No.119 Shahong road, Bantang industrial zone,  
Beibaixiang town, Yueqing city, Zhejiang, China.

Contacts: Bruce.lee

[www.traner.cn](http://www.traner.cn)

[www.traner-elec.com](http://www.traner-elec.com)

TEL: 0086-577-8801 9159

FAX: 0086-577-8988 8129

MOB.: 0086-188 1519 7570

E-mail: [bruce.lee@traner.cn](mailto:bruce.lee@traner.cn)

