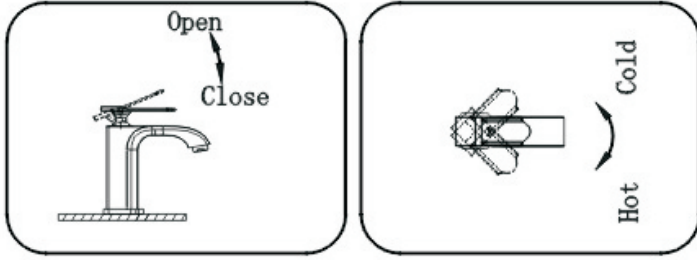


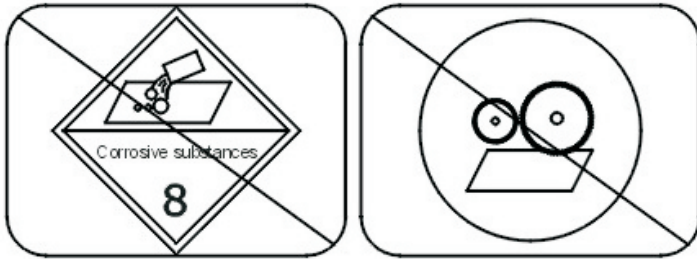
INSTRUCTIONS FOR USE:

1. Open the water, whether or not to detect the junction leakage.
2. Turn the handle to open up the angle, the greater the traffic; on the contrary, the smaller the angle, the smaller the flow until it is closed; when the handle is turned up, left adjustment, increase the amount of hot water, the right adjustment, increase the amount of cold water supply.



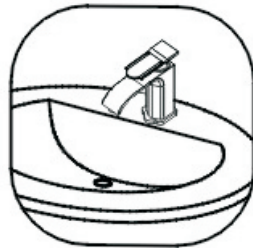
Care and Maintenance

- Use water and a soft cloth to remove surface dirt.
- You can use the following detergent to remove surface dirt.
 - Mild liquid detergent
 - Colorless glass detergent
 - Do not have abrasive detergent

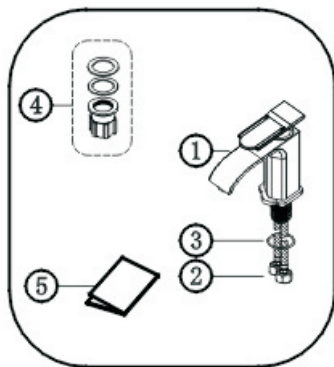


BASIN MIXER

1. After you open the product and control accessories listed in "Standard Parts List." Check the spare parts is complete, if any defect, please contact your local dealer immediately. As shown below



No.	NAME	QTY
1	Faucet body assembly	1
2	Inlet hose	2
3	Base ring	1
4	Fixed assembly	1
5	Instructions	1

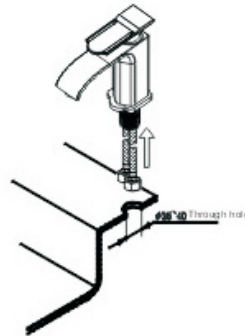


2. purchase and installation of the basin to match the size of the product phase.

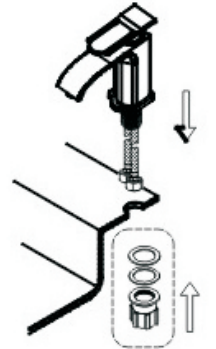
INSTALLATION INSTRUCTIONS



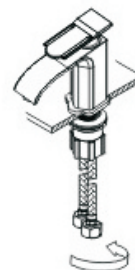
INSTALLATION STEPS:



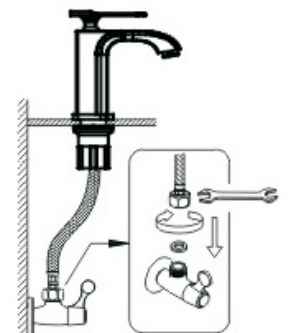
1. before installation, make sure there is a drill hole with the $\text{Ø}35-40$ through hole, and then set the faucet body fixed at the bottom of the discharge, and then set into the base of the gasket is installed.



2. together with the faucet body into the water basin loaded hole, follow the step taken to dismantle fixing system and then connect to the faucet body from under the pots.



3. with a wrench on the nut fastening system, and then a Phillips screw driver to tighten the Phillips screw fixation system fixed strengthen efforts.



4. the two water hose connection on the angle valve faucet body, "Red" and "blue" in accordance with the dot on the handle faucet tips are connected