

# ART

SUPER WATERPROOF LAMINATE FLOORING







# WORRY-PROOF!

With New technology Art sets the new standard for laminate flooring when it comes to water resistance. New technology allows you to get the durability of a laminate floor in hallways, kitchens and other areas. But the ability to withstand water is not the only benefit. A water-resistant floor is equally resistant to dirt and spills.

## The result?

Water, dirt, and stains stay on the surface and can be easily wiped off. As bonus of being water-resistant, the floors are also hygienic and easy to maintain.

*Tested by the authority*

*Thickness Swelling after 24 hours in water: < 5%*



## Where do you need a water-resistant floor?

Kitchen and dining room: Water-resistant also means wine and sauce-proof. If you spill something, just wipe it off!

Hallway: With our water-resistant floors you don't have to worry about dirt or water from outside. The sealed surface makes it all stay on the surface and makes it easy to clean.

Kids' room: Who knows what they'll get up to? A water-resistant floor is good insurance.



# Ready for a **SUPER WATERPROOF LAMINATE FLOORING**

Art super waterproof laminate flooring takes the whole category of laminate flooring to a new level. The birth of Art super waterproof laminate flooring is an upgraded version of laminate flooring with higher quality; Performance is better than other floors, scratch resistance, more stable quality, higher process requirements, and more competitive price.

## » True-to-nature looks

Deep embossing brings out every grain of a wood design, even down into the bevel.

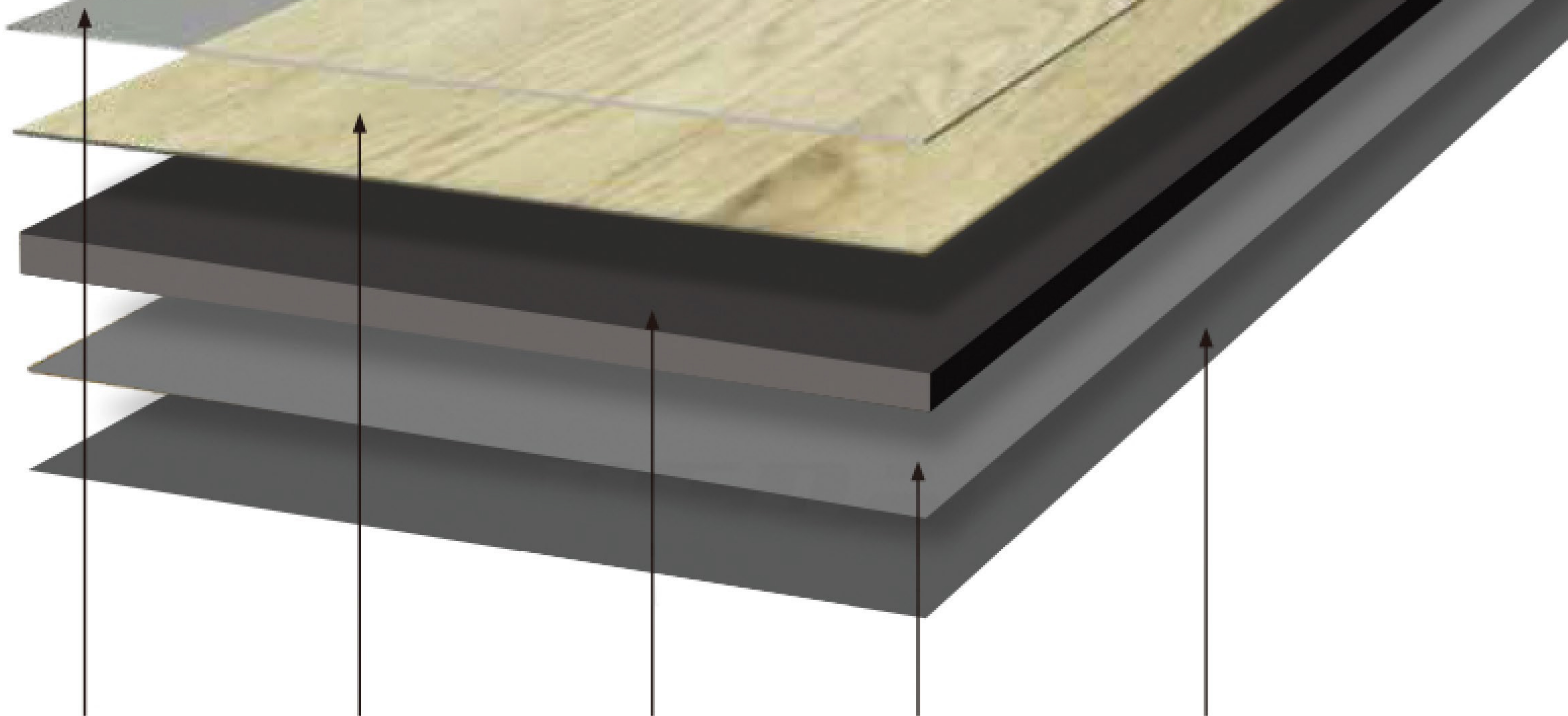
## » Scratch resistance

It is often scratched carelessly in normal use, and it is more durable than other floors in case of falling heavy objects, dragging chairs, etc.

## » Water-resistant

New technology makes ideal for kitchens and other wet areas.





### TOP LAYER

Surface sealing wear layer made of a resin bond corundum coating.

### DESIGN LAYER

Decorative design layer made of wood fibre.

### BASEBOARD

Baseboard made of wood fibre that is compressed into extremely high density.

### BALANCER

Avoid floor warping and Moisture protection

### IXPE film/EVA film

Silent-integrated impact sound reducing environment protection material



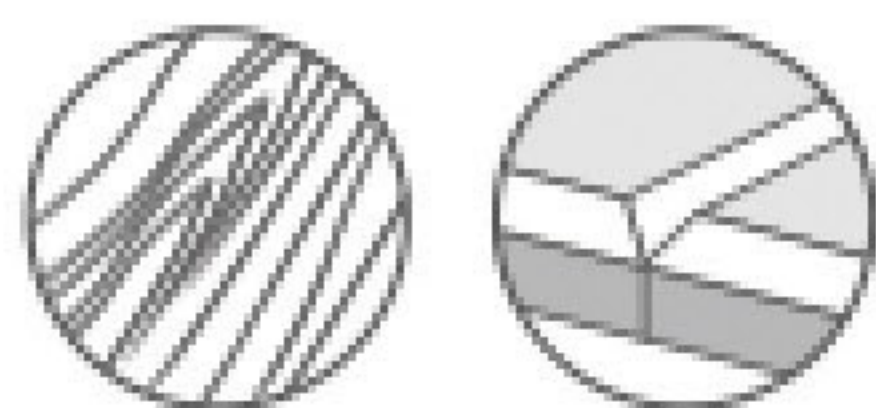
Easy maintenance



Abrasion resistance:AC3



Abrasion resistance:AC4



Super realistic wood grain



Natural look



High definition design & color

Rich varieties of wood grain

#### RESILIENT COMFORT CORE



Soft underfoot

#### WOOD CORE



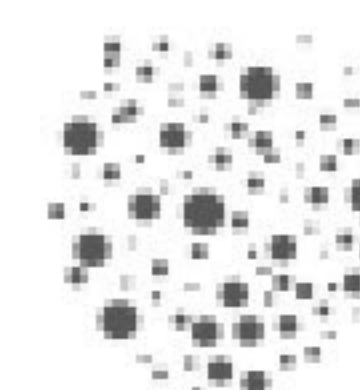
The best stability



Moisture-proof



Noise absorption



Antifungal







# Your health is important to us

Health is our greatest asset. For this reason, we bear a great responsibility, because we create products you live with every day. They are an important part of your home, it's where you and your loved ones should feel well looked after. We at Art therefore attach the greatest importance to the fact that you and your family can live with our floors with confidence and being assured of natural healthy living. With a super waterproof floor you are making a good choice for your health.



*Tested by the authority  
Climate box method  
Formaldehyde emission*



\*Information sur le niveau d'émission de substances volatiles dans l'air intérieur, présentant un risque de toxicité par inhalation, sur une échelle de classe allant de A+ (très faibles émissions) à C (fortes émissions).





Internal bonding strength **3.1** MPa

Välinge  
Fast & easy



Heavy load resistance



**≥ AC3**  
STANDARD

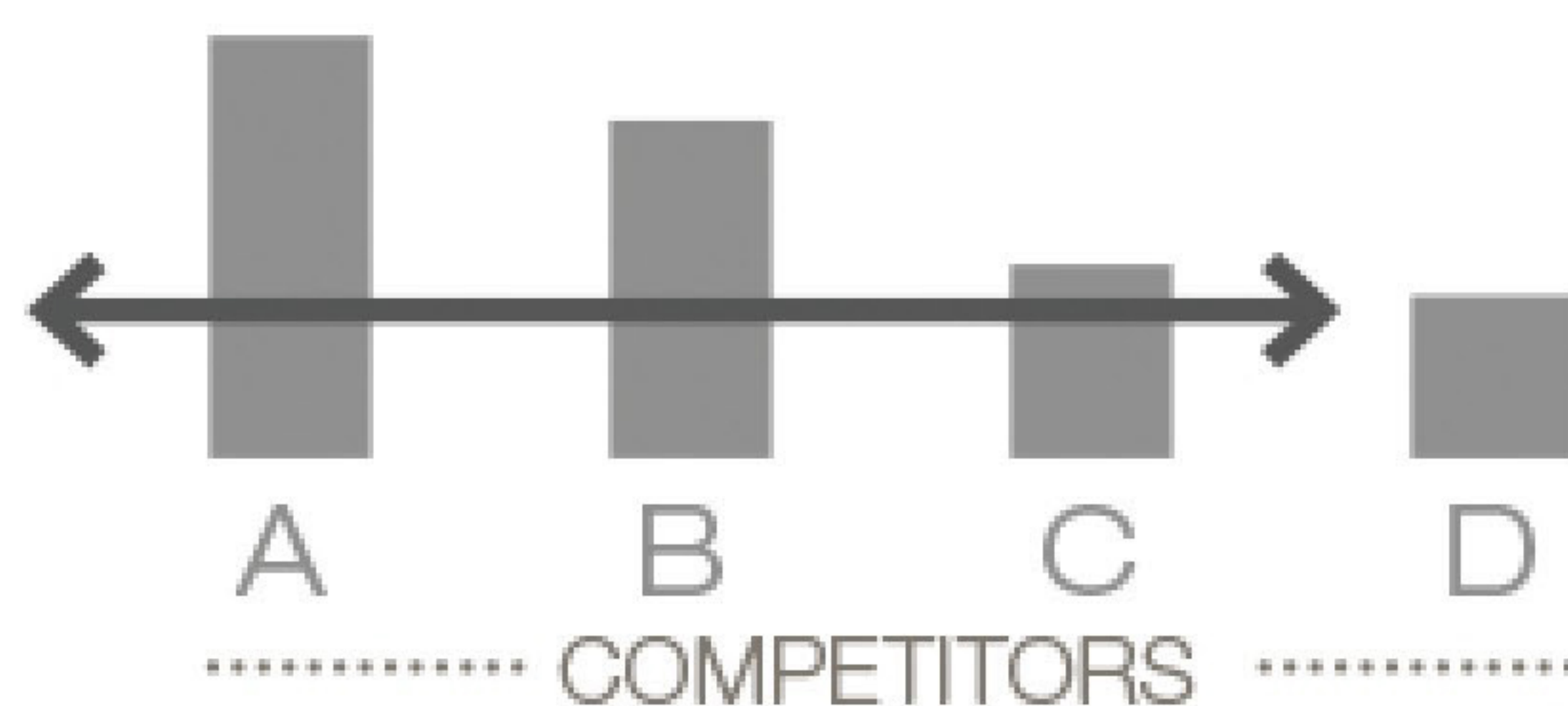
BREAK  
**6000**  
CYCLES



Castor Chair Test

Bending strength

**49.7** MPa



Bending Strength Test





smooth matt



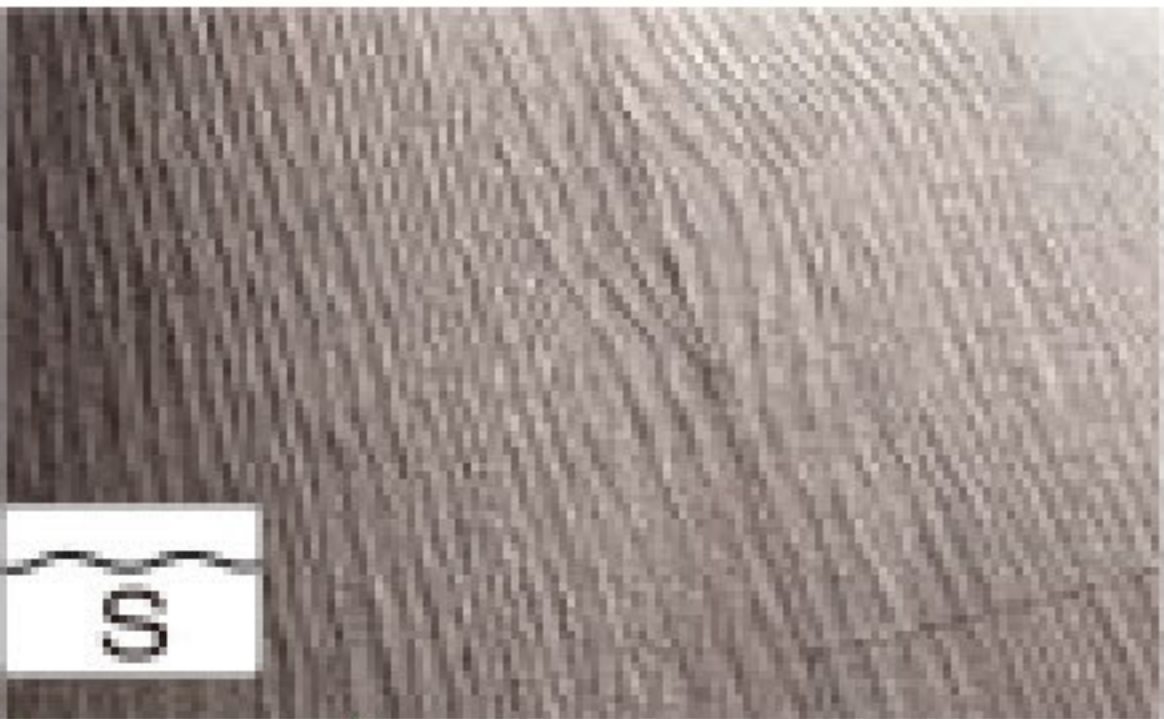
pores rustic



pores



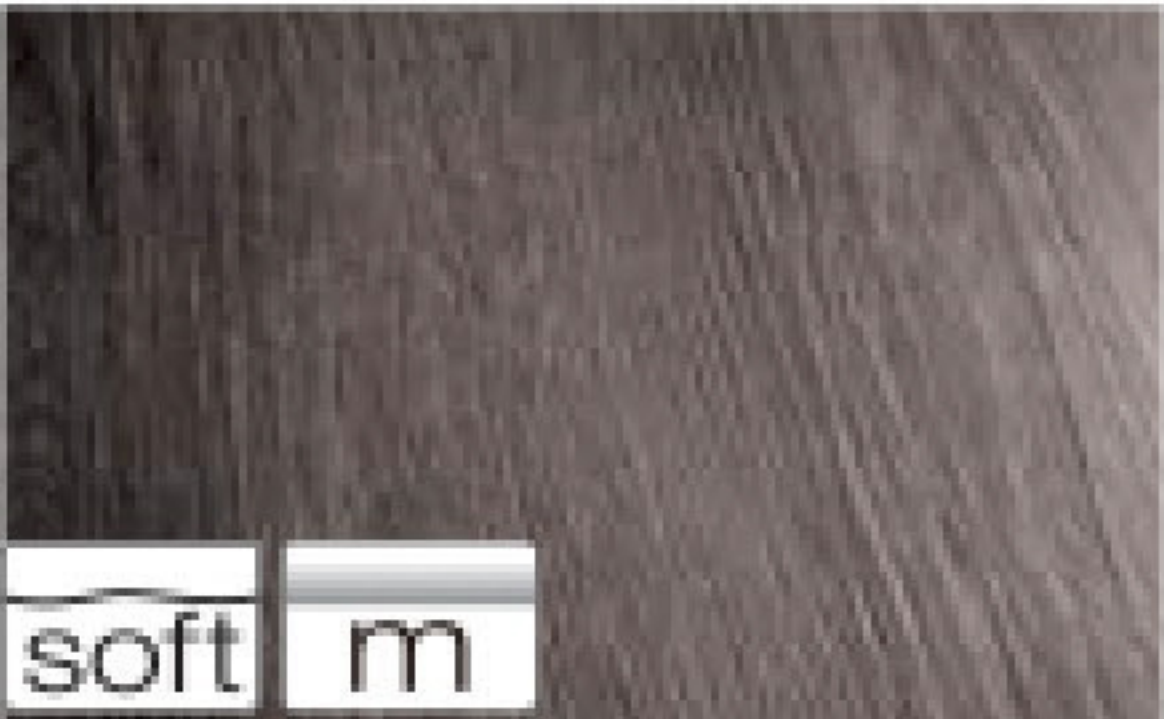
pores matt



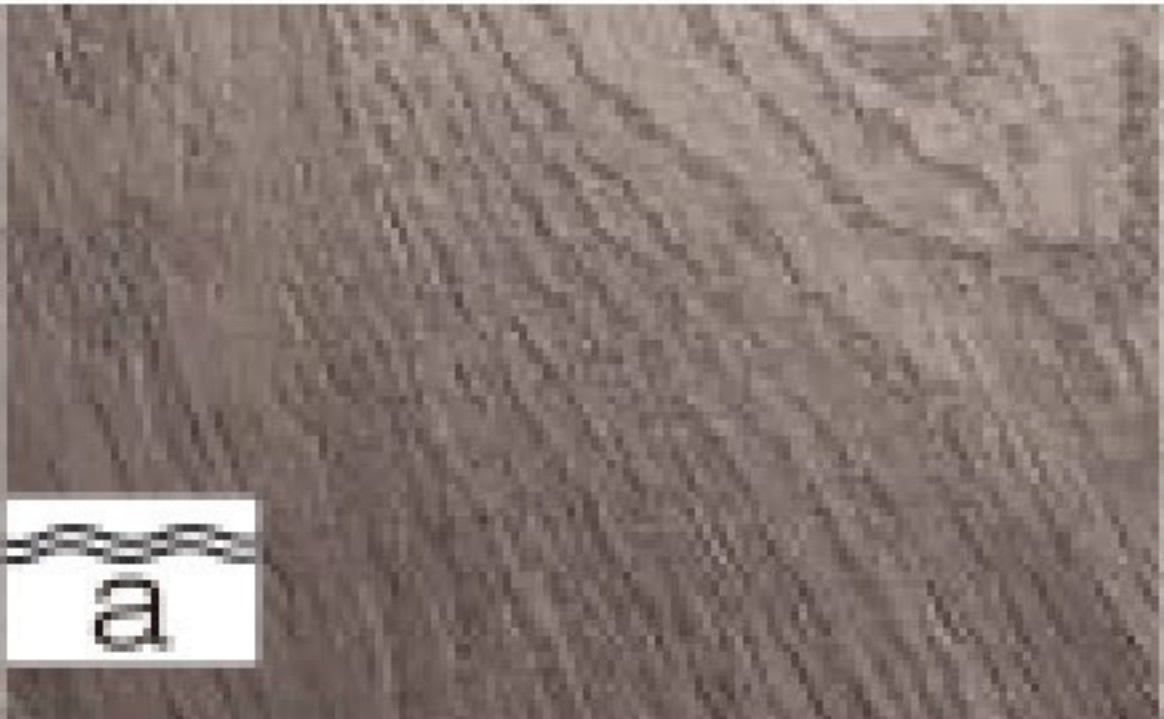
textured



textured matt



soft matt



authentic



authentic matt



Bevel on all sides

# How to choose your floor

In order to make the choice of your favourite floors as easy as possible. From the Classic Line with classic designs and formats, the Trend Line, with wide and trendy designs, to the Line with its classy large plank formats. Immerse yourself in the world of ART super waterproof laminate flooring and find your dream floor.





Performance comparison  
ART super waterproof laminate flooring is different from  
other ordinary laminate flooring and SPC flooring

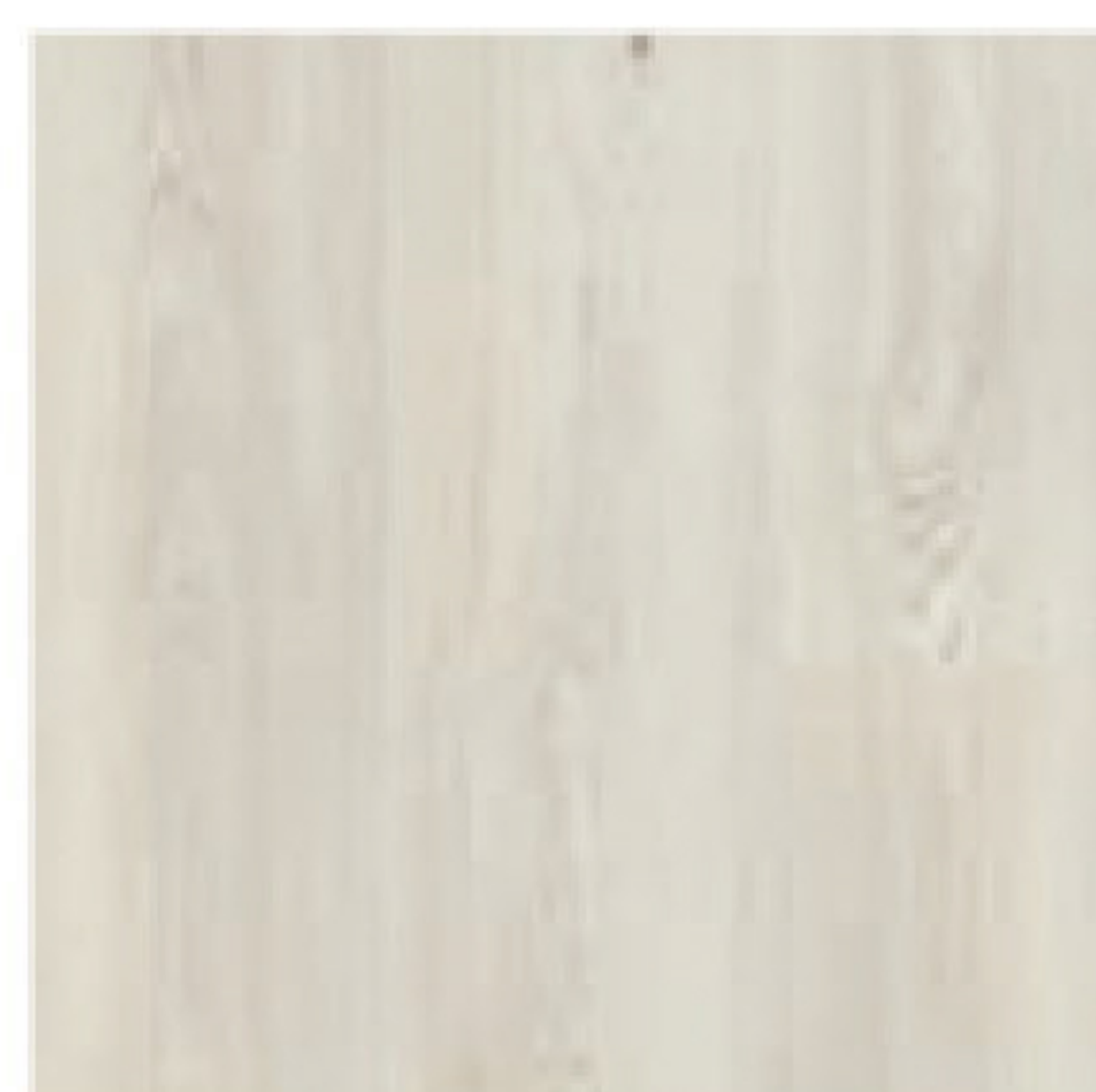
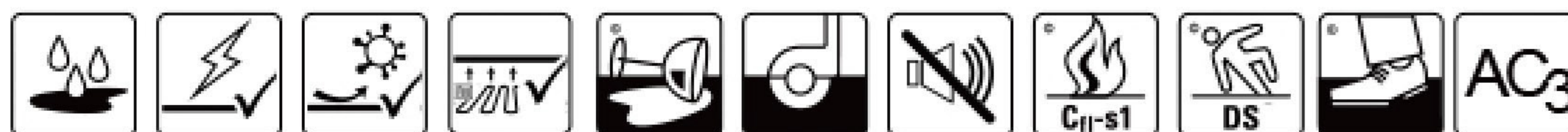
	ART super waterproof Laminate flooring	Laminate flooring	SPC flooring
Main Components	Laminate floor covering	Laminate floor covering	Stone powder+PVC
Density	>1g/cm <sup>3</sup>	<1g/cm <sup>3</sup>	>1g/cm <sup>3</sup>
Environment Protection	CARB2、E0	CARB2、E0	Non toxic and tasteless, zero formaldehyde
Wear-resisting	★★★★☆	★★★★☆	★★★☆☆
Footfeel	★★★★☆	★★★★☆	★★☆☆☆
Waterproofness	★★★★☆	★★★☆☆	★★★★★
Internal Bonding Strength	★★★★★	★★★★☆	★★★★☆



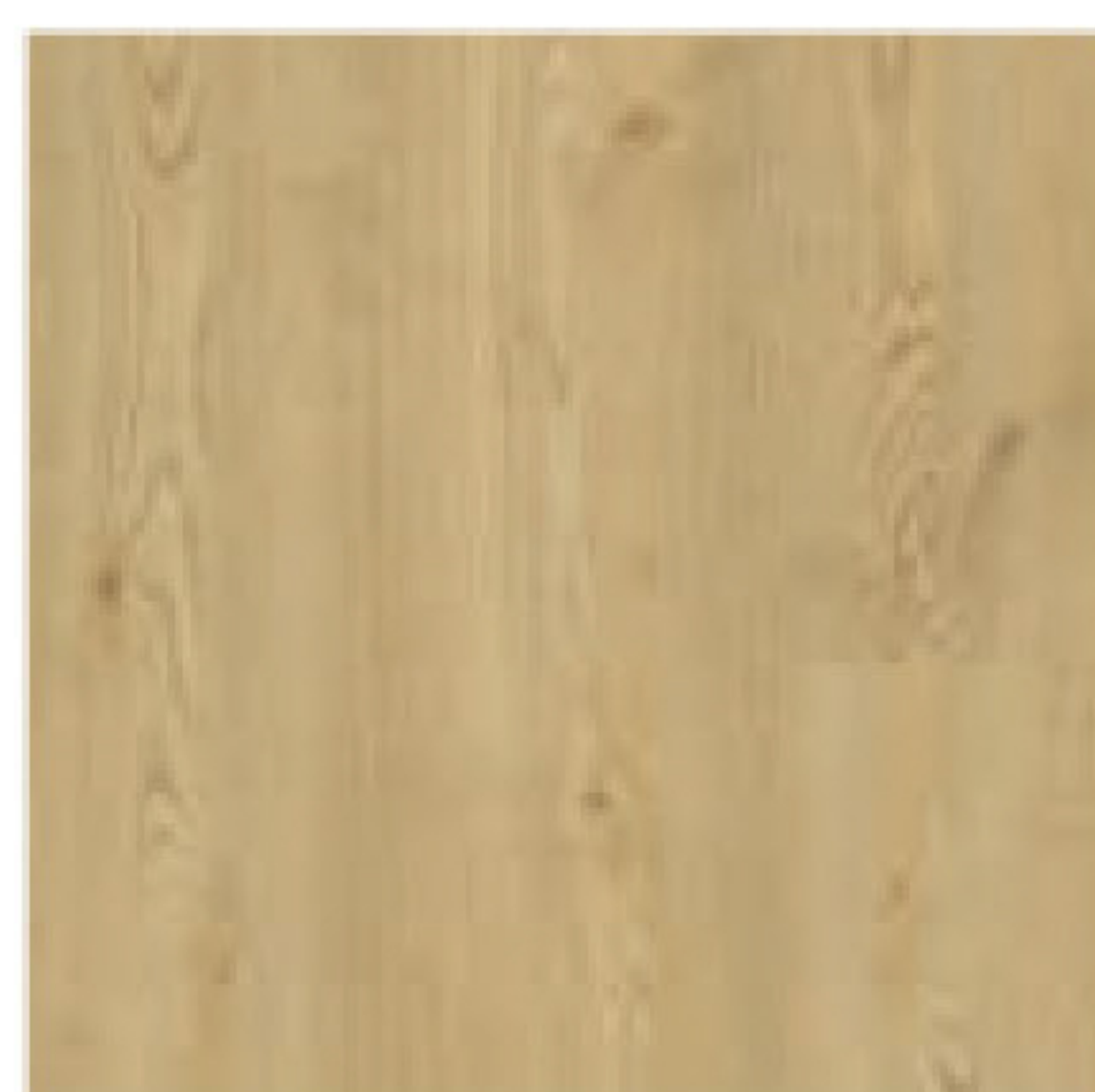


# Colour

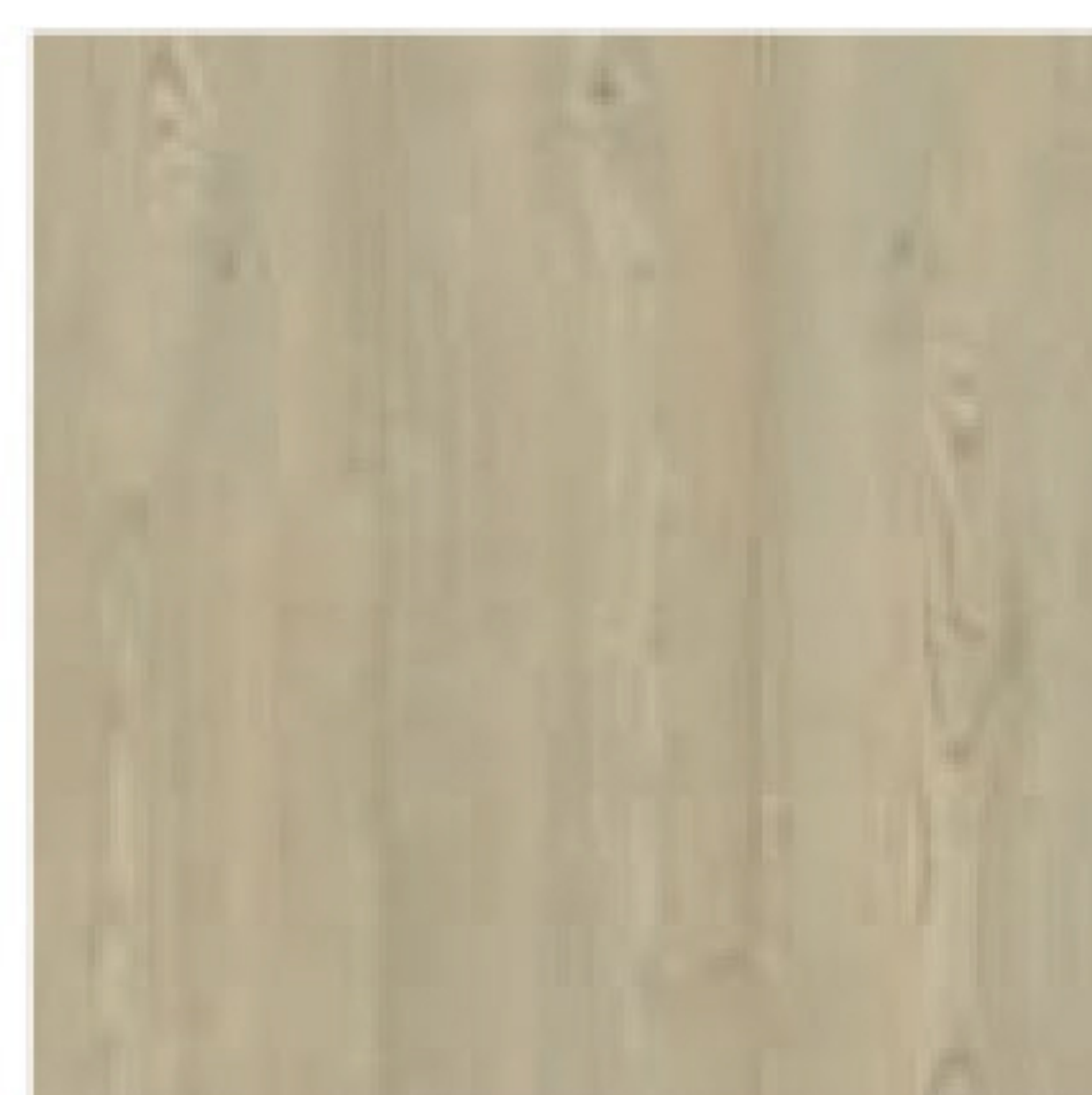
Each type of wood has a distinctively characteristic colour. The Art product range contains a large choice of colours to suit a diverse range of furnishing styles. Our products are available in a comprehensive choice of shades ranging from light to dark.



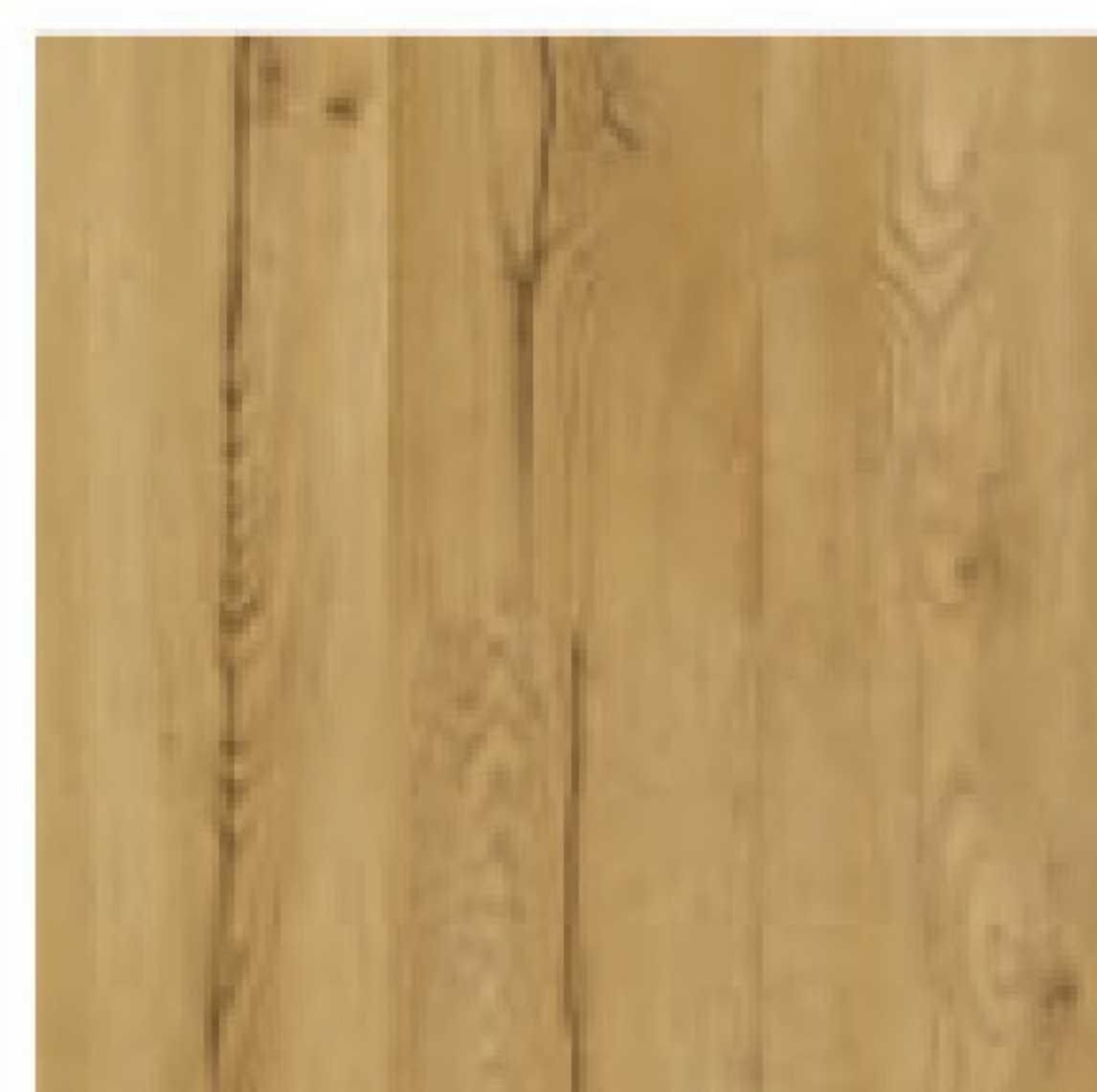
SEASALT OAK  
■ L0345-04998



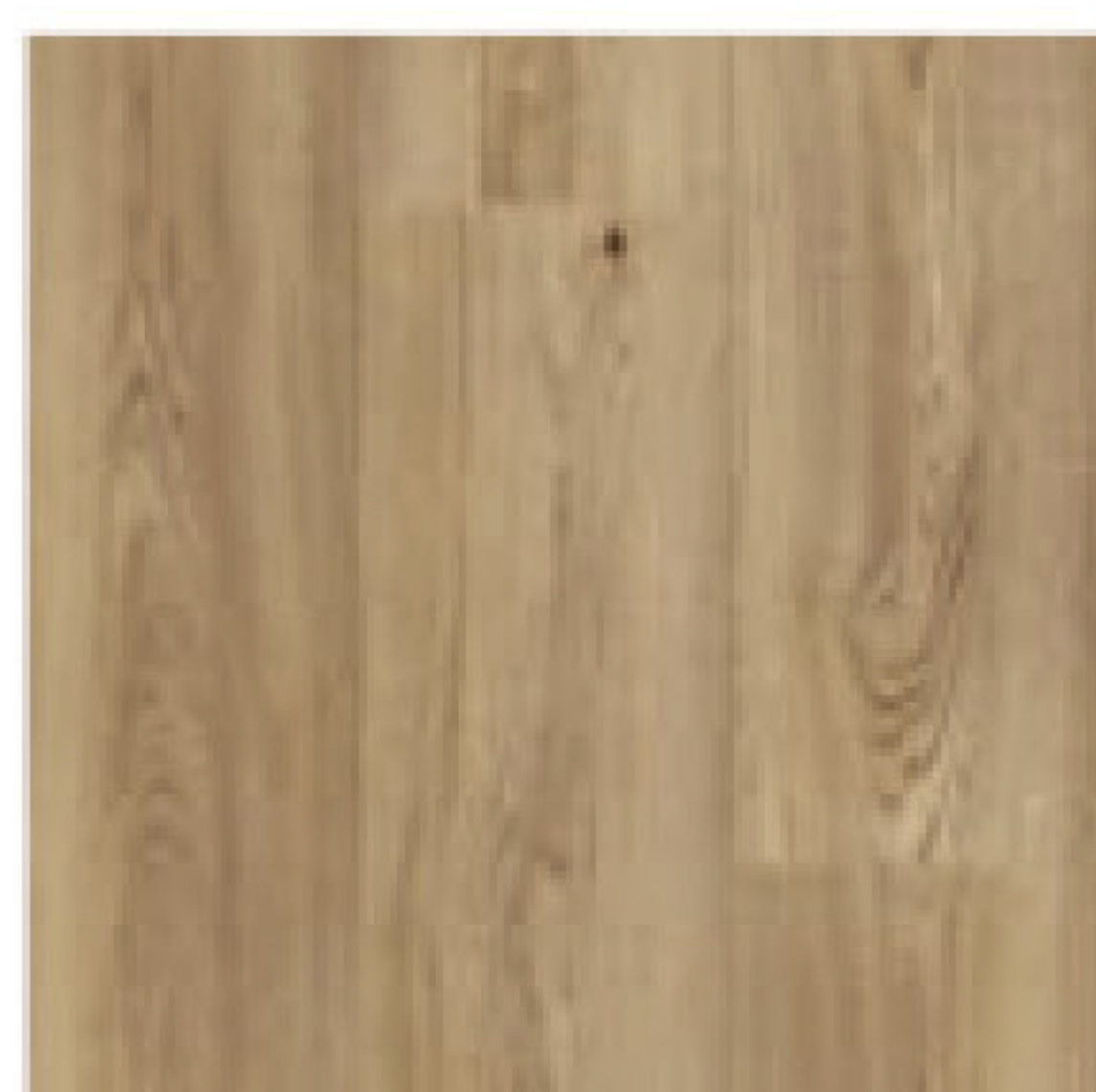
PORT OAK  
■ L0345-05002



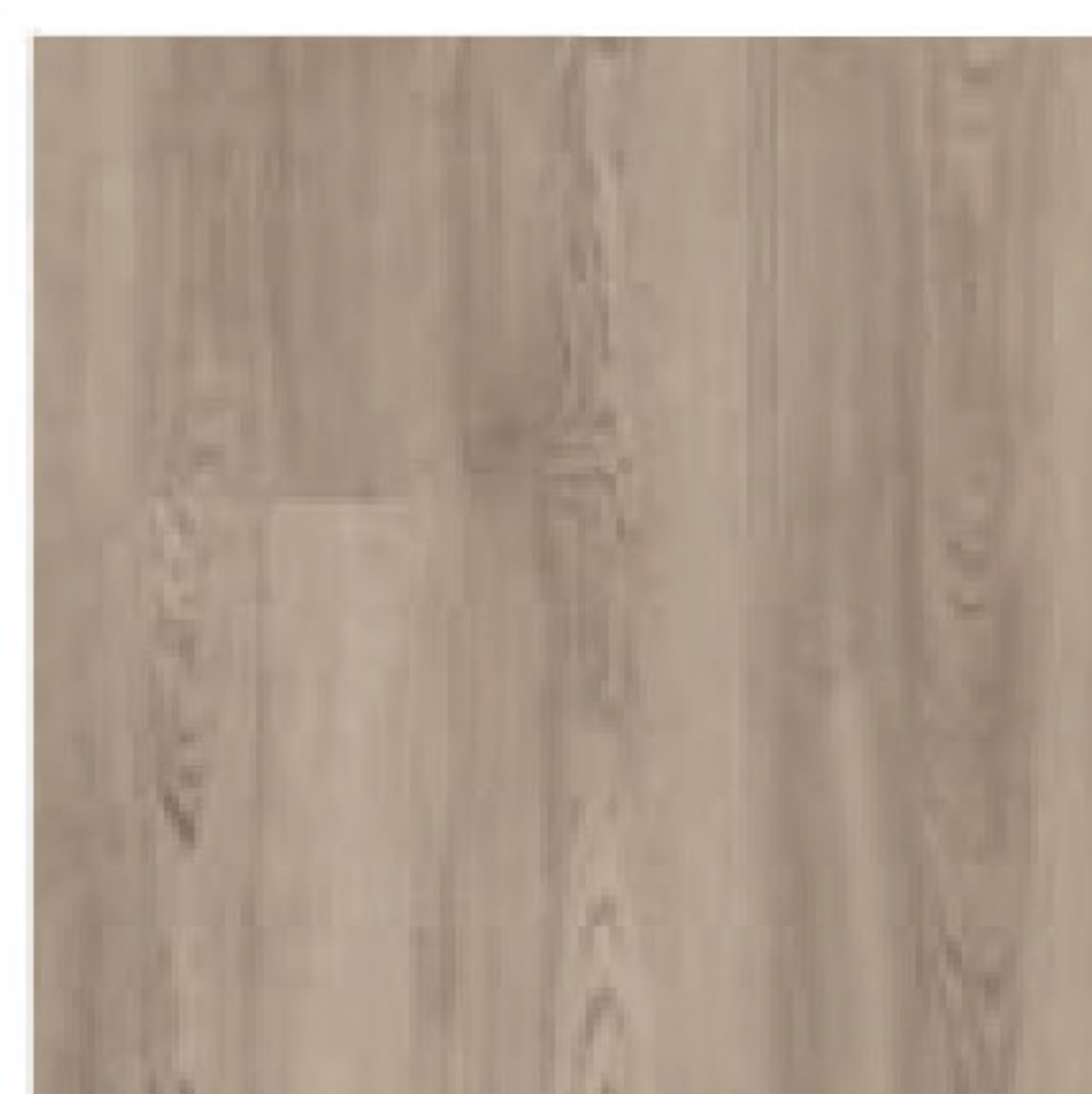
VITALETA OAK  
■ L0345-04999



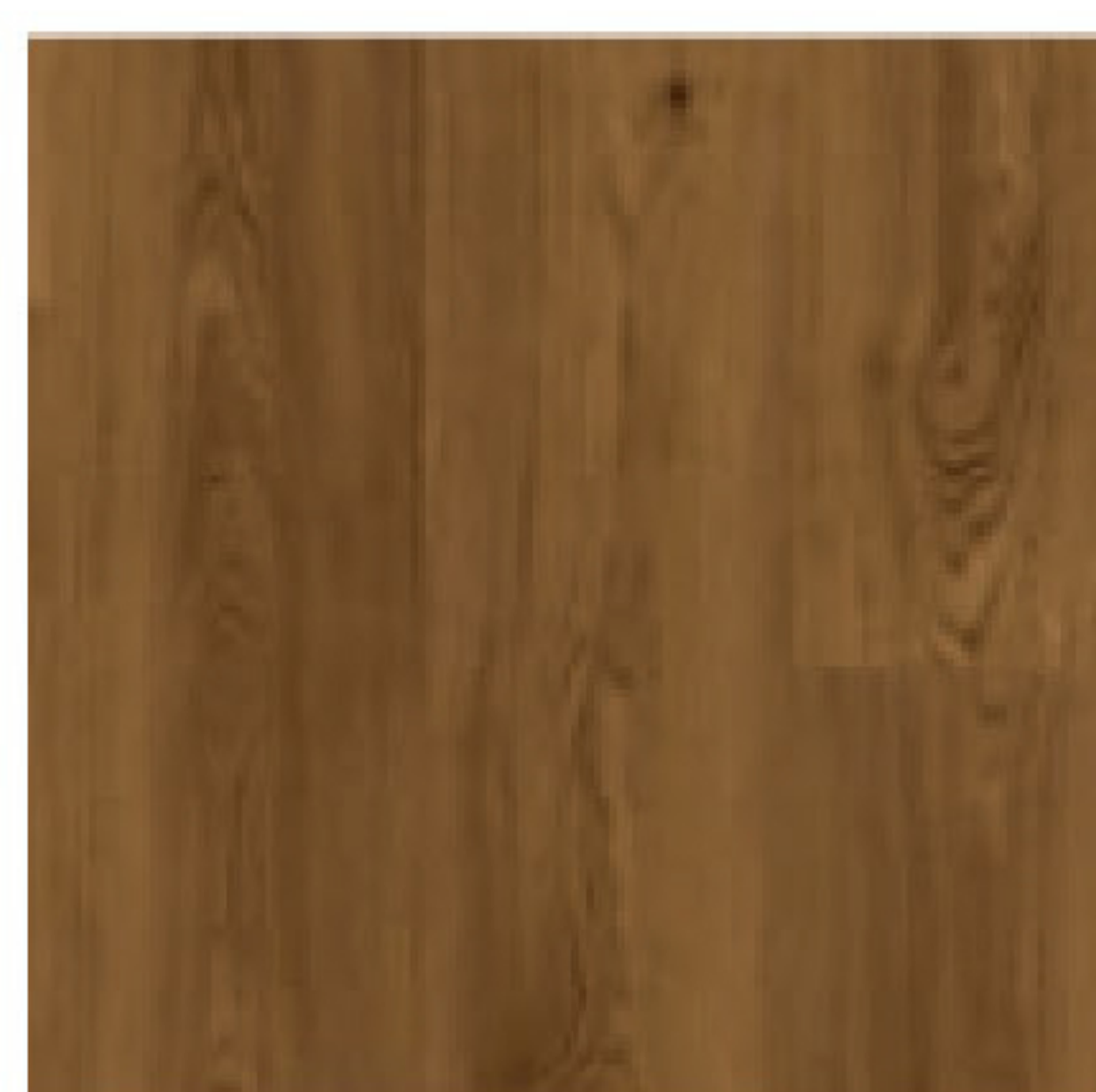
WILDWOOD OAK  
■ L0345-05003



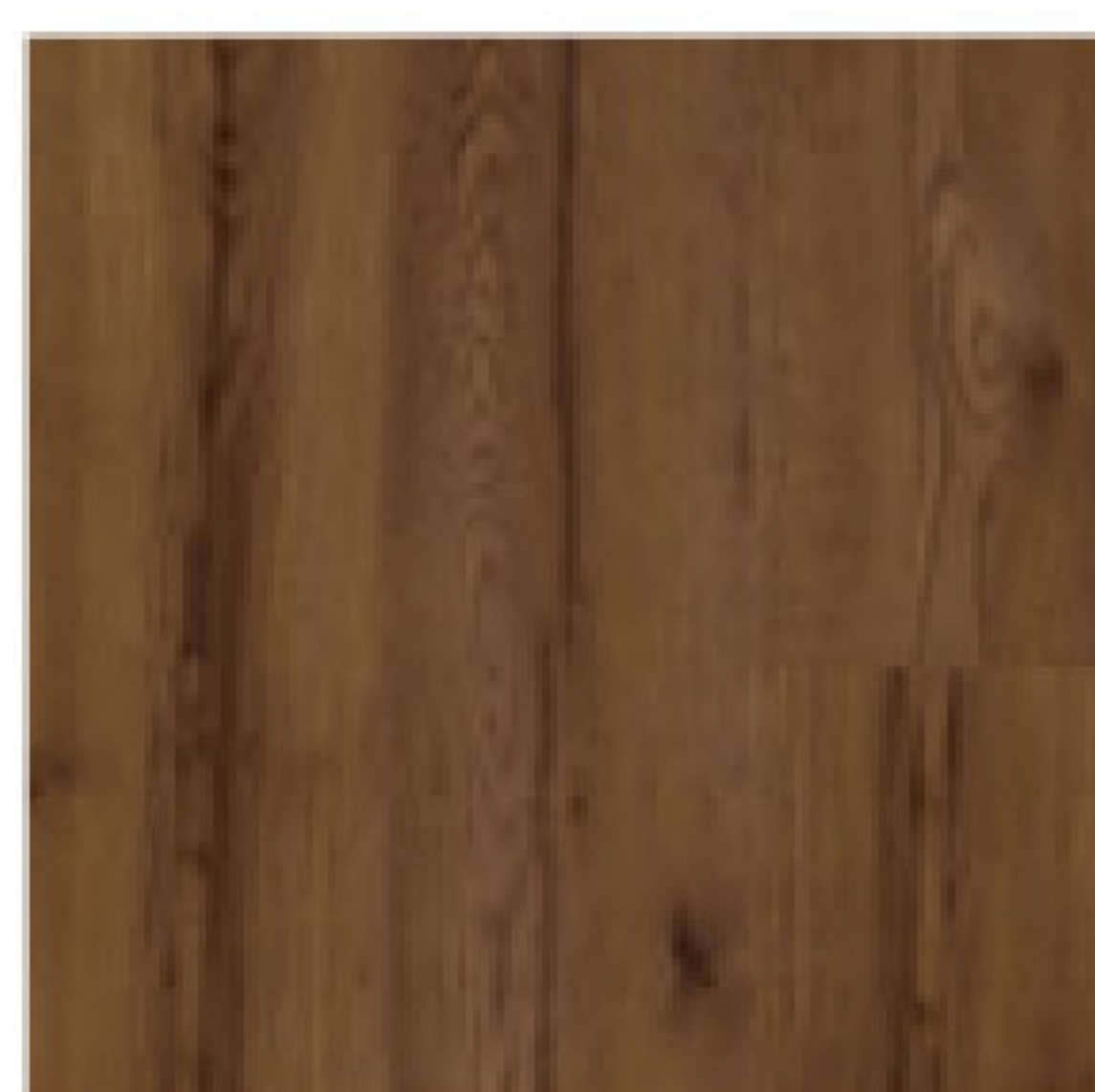
ABBEY OAK  
■ L0345-04996



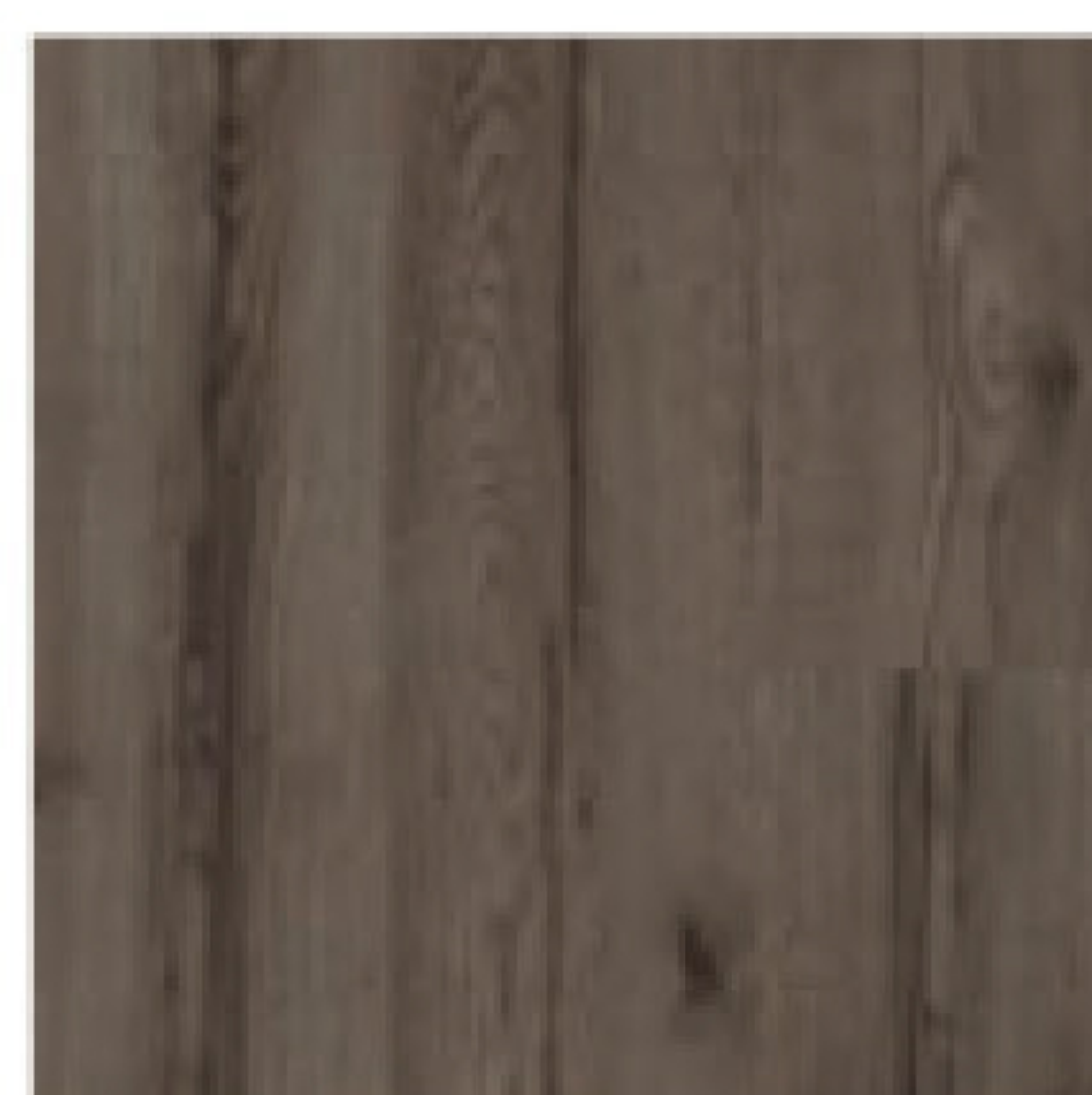
NORTHERN OAK  
■ L0345-04997



BLOSSOM OAK  
■ L0345-04994



MOUNTAIN CABIN OAK  
■ L0345-05005



RIVER ROCK OAK  
■ L0345-05004



Informations sur la classe d'émission de carbone: vérifiez dans l'air intérieur, présentez un risque de toxicité par inhalation, car une quantité de carbone allant de A+ (très faible émission) à C (forte émission).

