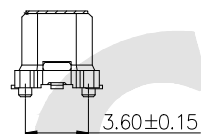
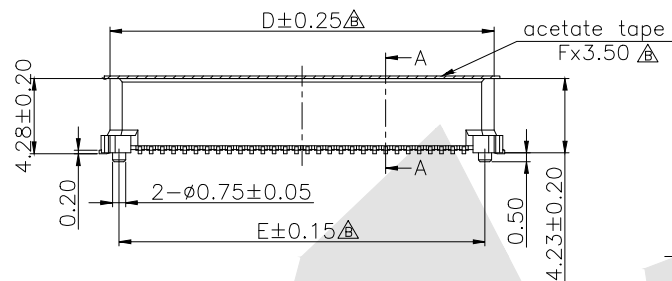


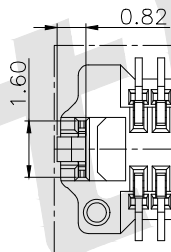
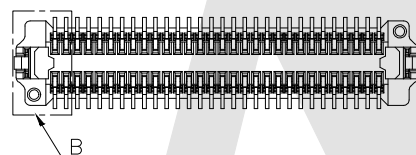
SECTION A-A



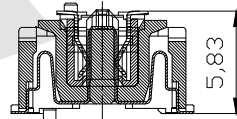
Ordering Code:

BBF0.635 - F - X - X - X - X - 01  
 ① ② ③ ④ ⑤ ⑥ ⑦

- ① Series NO:  
0.5mm Board to Board Floating Connector
- ② M: Male F: Female
- ③ Mating Height:  
X. X=X. Xmm
- ④ NO. of Contacts:  
See Table  
For Example  
20:20 Poles
- ⑤ Contact Plating  
G0: Gold Flash  
G1: 3u" Gold  
G2: 5u" Gold  
G3: 10u" Gold  
G4: 15u" Gold  
G5: 30u" Gold  
SN: Tin



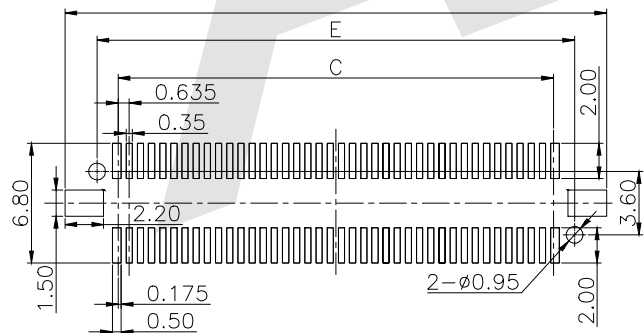
DETAIL B  
2:1



Mating Height

- ⑥ Packing  
T: Tube A: Tray  
B: Bag U: Tube+CAP  
R: tape&Reel  
W: tape&Reel+CAP
- ⑦ Serial Number: 01

No. of PIN/ROW	Dimension Information					
	A	B	C	D	E	F
2x30	23.05	22.85	18.42	21.85	20.80	22.50
2x40	29.40	29.20	24.77	28.20	27.15	28.80



Recommended P.C.Board Layout (Tolerance:±0.05)

Unless Otherwise specified tolerance  
 X. ±0.35 X. XX: ±0.20  
 X. X: ±0.25 X. XXX: ±0.15

**Atkconn**® ATKCONN ELECTRONICS CO., LTD  
[Http://www.atkconn.com](http://www.atkconn.com)

SCALE: As Shown	UNIT: mm
DRAW ZLA	DATE 24/10/2022
CHECK BobYang	DATE 24/10/2022
VER. A0	

TITLE:  
0.635MM Floating Board to Board Female  
Socket Connector With Post Mating Height 5.83MM

DRAWING NO: BBF0.635F-XXXX01

PRODUCT NO: BBF0.635F-XXXX01

REV	DESCRIPTION	DATE