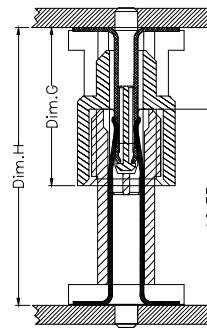
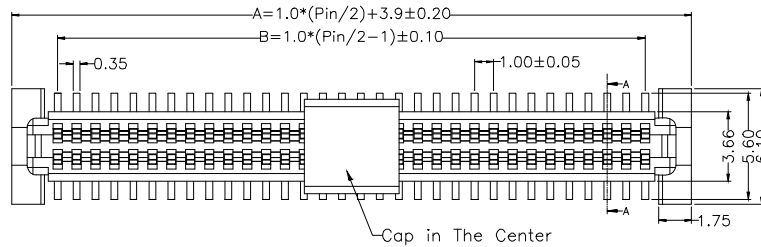




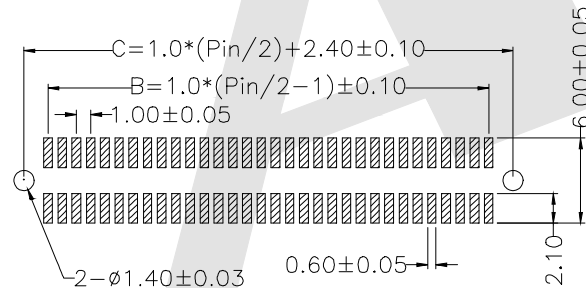
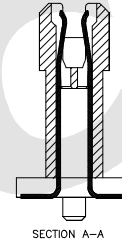
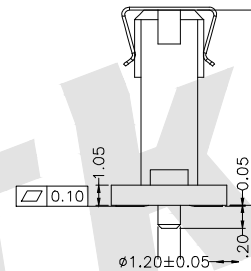
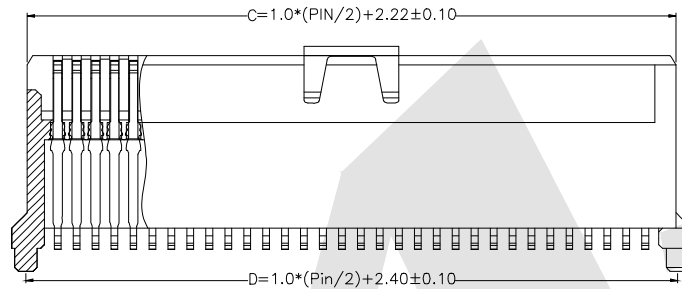
Dimensions :

Number of Position	A	B	C	D
20	13.90	9.00	12.22	12.40
30	18.90	14.00	17.22	17.40
40	23.90	19.00	22.22	22.40
50	28.90	24.00	27.22	27.40
60	33.90	29.00	32.22	32.40
64	35.90	31.00	34.22	34.40
70	38.90	34.00	37.22	37.40
80	43.90	39.00	42.22	42.40
84	45.90	41.00	44.22	44.40
90	48.90	44.00	47.22	47.40
100	53.90	49.00	52.22	52.40
110	58.90	54.00	57.22	57.40
120	63.90	59.00	62.22	62.40

Socket Height Dim G	Mating Height Dim H
6.35	12.65
7.35	13.65
8.35	14.65

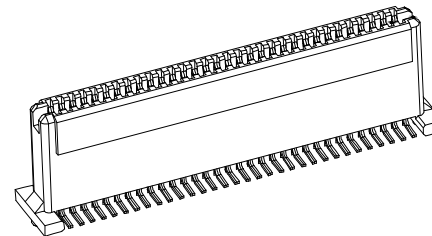


Mating Draw (Ref)



PCB Layout(Thickness:1.0±0.10 Min)

Scale:1:2



Specifications

Current rating:1.0A AC/DC

Voltage rating:250V AC/DC

Contact resistance:30m ohm Max.

Insulation resistance:1000M ohm Min.

Withstanding voltage:250V(r.m.s) for one Minute

Operating temperatre range:-40°C to +80°C

Materials:

Insulator:high temp. plastic(LCP UL94V-0)

Color:natural color

Conact:phosphor bronze

plated:gold plated

Ordering Code:

BB1.0 - F - X - X - X - X - 01

① ② ③ ④ ⑤ ⑥ ⑦

① Series NO:

1.0mm Board to Board connector

② M:Male F:Female

③ mating Height:

12.65=12.65mm

13.65=13.65mm

14.65=14.65mm

④ NO. of contacts:

see table

For example

10:10poles

⑤ Contact Plating

G0: Gold flash

G1: 3u" Gold

G2: 5u" Gold

G3: 10u" Gold

G4: 15u" Gold

G5: 30u" Gold

SN:Tin

⑥ Packing

T:Tube A:Tray

B:Bag U:Tube+CAP

R:tape&Reel

W:tape&Reel+CAP

⑦ serial number:

01

Unless Otherwise specified tolerance

X. ±0.35 X.XX: ±0.20

X.X: ±0.25 X.XXX: ±0.15

SCALE:

As Shown

UNIT:

mm

DRAW

ZLA

DATE

24/10/2022

CHECK

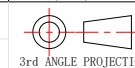
BobYang

DATE

24/10/2022

VER.

A0



Atkconn® ATKCONN ELECTRONICS CO., LTD
Http://www.atkconn.com

TITLE: 1.0mm Board to Board connector,
Female, mating Height=12.65~14.65mm

DRAWING NO: BB1.0F-XXXX01

PRODUCT NO: BB1.0F-XXXX01

REV

DESCRIPTION

DATE

1

2

3

4

5

6

7

8