

HSF



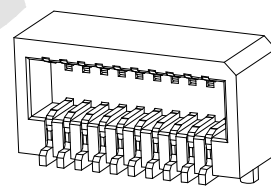
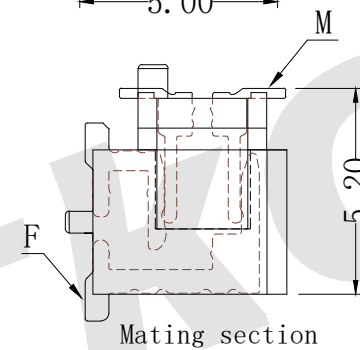
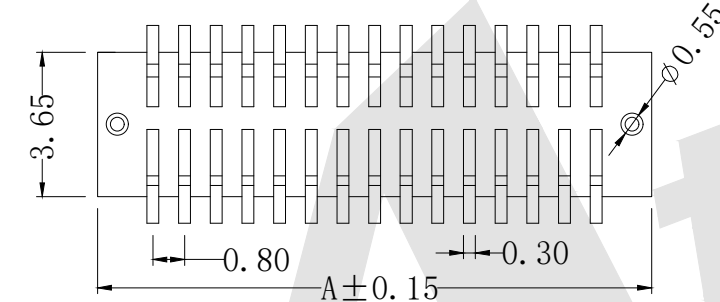
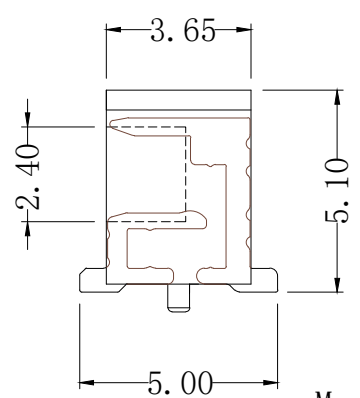
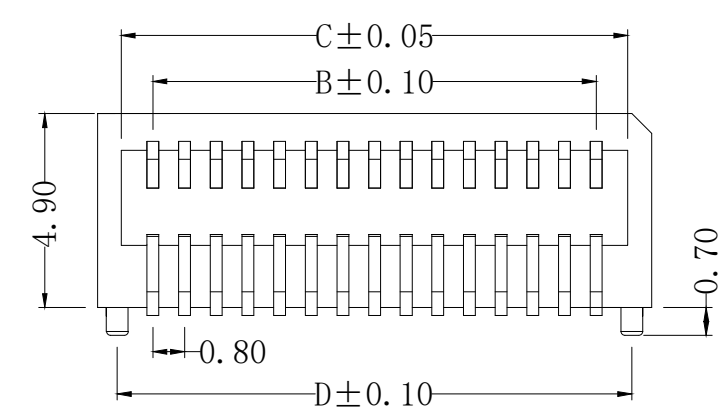
ROHS

No. of contacts	Dimensions			
	A	B	C	D
4	3.60	0.80	2.40	2.60
6	4.40	1.60	3.20	3.40
8	5.20	2.40	4.00	4.20
10	6.00	3.20	4.80	5.00
12	6.80	4.00	5.60	5.80
14	7.60	4.80	6.40	6.60
16	8.40	5.60	7.20	7.40
18	9.20	6.40	8.00	8.20
20	10.00	7.20	8.80	9.00
22	10.80	8.00	9.60	9.80
24	11.60	8.80	10.40	10.60
26	12.40	9.60	11.20	11.40
28	13.20	10.40	12.00	12.20
30	14.00	11.20	12.80	13.00
32	14.80	12.00	13.60	13.80
34	15.60	12.80	14.40	14.60
36	16.40	13.60	15.20	15.40
38	17.20	14.40	16.00	16.20
40	18.00	15.20	16.80	17.00
42	18.80	16.00	17.60	17.80
44	19.60	16.80	18.40	18.60
46	20.40	17.60	19.20	19.40
48	21.20	18.40	20.00	20.20
50	22.00	19.20	20.80	21.00
52	22.80	20.00	21.60	21.80

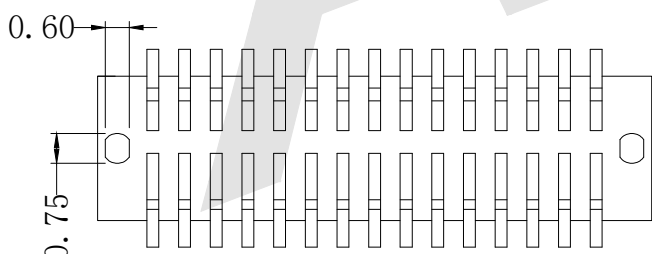
- 1: Specification
- a.1 Current rating:0.5A AC/DC
 - a.2 Voieage rating:50v AC/DC
 - a.3 Contact resistance:20m milliohms max
 - a.4 Cnsulation Resistance:100Mega ohmsmin
 - a.5 Wiehstandingvoltage:500vAC/minute
 - a.6 Temperature range:-25° cto+80° c
- 2.Materialand plating
- b.1 Cnsulator:pa9t.piastic(u194v-0)
 - b.2 Contact:Brass
 - b.3 Finsh:Gola plated

Ordering Code:
 BB0.8 - F - 5.2 - X - X - X - 01RΔ

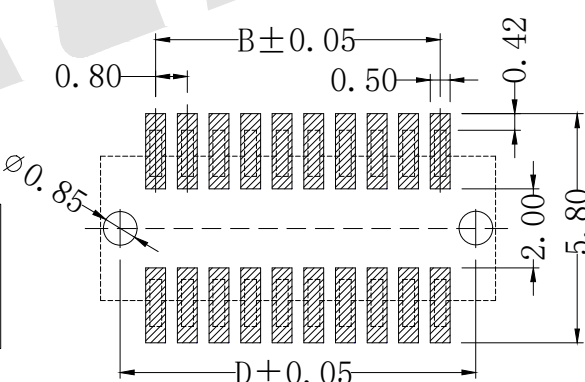
- ① Series NO: 0.8mm Board to Board connector
- ② M:Male F:Female
- ③ mating Height: 5.2=5.20mm
- ④ NO. of contacts: see table For example 24:24poles
- ⑤ Contact Plating G0: Gold flash G1: 3u" Gold G2: 5u" Gold G3: 10u" Gold G4: 15u" Gold G5: 30u" Gold SN: Tin
- ⑥ Packing T:Tube A:Tray B:Bag U:Tube+CAP R:tape&Reel W:tape&Reel+CAP
- ⑦ serial number: 01R Δ



3D VIEW



oblate guide pillar



Recommended PCB pattern dim
Tolerance: ±0.05

Unless Otherwise specified tolerance	
X. ±0.35	X.XX: ±0.20
X.X: ±0.25	X.XXX: ±0.15
SCALE: As Shown	UNIT: mm
DRAW ZLA	DATE 24/10/2022
CHECK BobYang	DATE 24/10/2022
VER. A0	

Atkconn® ATKCONN ELECTRONICS CO., LTD
[Http://www.atkconn.com](http://www.atkconn.com)

TITLE: 0.8mm Board to Board connector, female, mating Height=5.2mm

DRAWING NO: BB0.8F-5.2XXX01R

PRODUCT NO: BB0.8F-5.2XXX01R

REV	DESCRIPTION	DATE
1		
2		
3		
4		
5		