

HSF



ROHS

SPECIFICATION

Current Rating: 7 Amp
 Insulation Resistance: 1000M ohms min
 Contact Resistance: 20M ohms max
 Dielectric Withstanding: AC500V
 Operating Temperature: -65°C to +125°C
 Contact Material: Brass
 Insulator Material: LCP,UL 94V-0 Black

Ordering Code:

PHFM01 - X - X - S - A-D-W - X - X - X
 ① ② ③ ④ ⑤ ⑥ ⑦ ⑧

① Series No:

② No. of Contacts
01 To 40

③ Contact Plating:
 G0:Gold flash S0:Selective
 G1:3U" Gold S1:Selective 3u"
 G2:5u" Gold S2:Selective 5u"
 G3:10u" Gold S3:Selective 10u"
 G4:15u" Gold S4:Selective 15u"
 G5:30u" Gold S5:Selective 30u"
 SN:Tin

④ Connector Type
S:Single

⑤ Pin Length:

A:1080=10.8mm
 D:0085=0.85mm
 W:1080=10.8mm

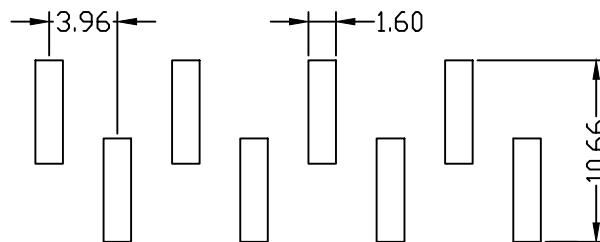
Please mark the desired length in the A/D/W

⑥ Insulator Material

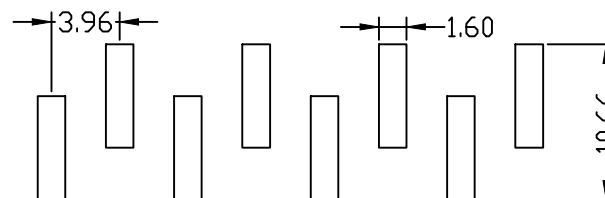
B:PA6T
 C:LCP
 E:PA9T

⑦ Packing:

A:Tray
 B:Bag
 T:Tube
 U:Tube+CAP
 R:Tape&Reel
 W:Tape&Reel+CAP
 ⑧ PCB Layout Option
 A:Type A
 B:Type B

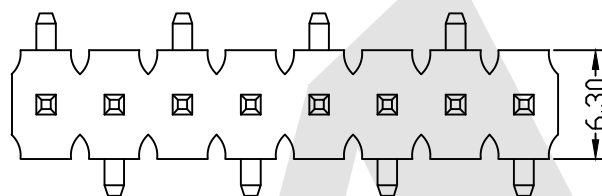


Type A

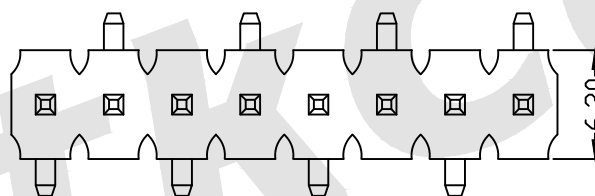


Type B

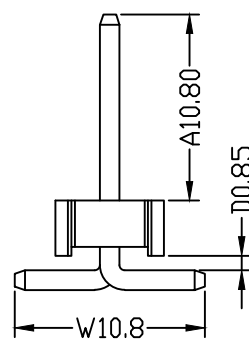
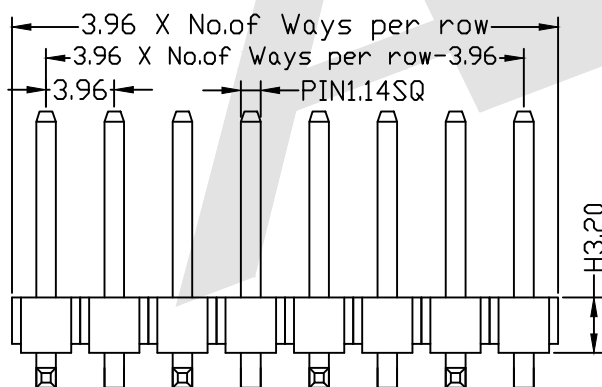
PCB LAYOUT



Type A

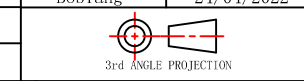


Type B



Unless Otherwise specified tolerance
 X. ±0.35 X.XX: ±0.20
 X.X: ±0.25 X.XXX: ±0.15

SCALE: As Shown UNIT: mm
 DRAW ZLA DATE 24/04/2022
 CHECK BobYang DATE 24/04/2022



Atkconn® ATKCONN ELECTRONICS CO., LTD
[Http://www.atkconn.com](http://www.atkconn.com)

TITLE: 3.96mm Pin Header Single Row SMT Type

DRAWING NO: PHFM01-XXS-1080-0085-1080-XXX
 PRODUCT NO: PHFM01-XXS-1080-0085-1080-XXX

REV	DESCRIPTION	DATE
1		
2		