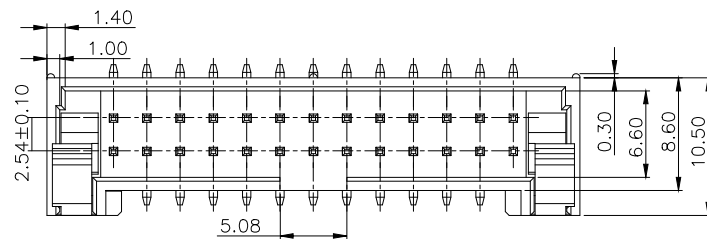


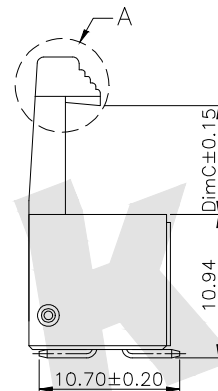
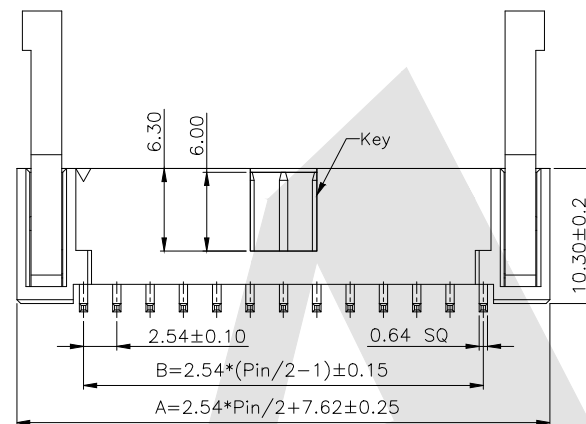


SPECIFICATION

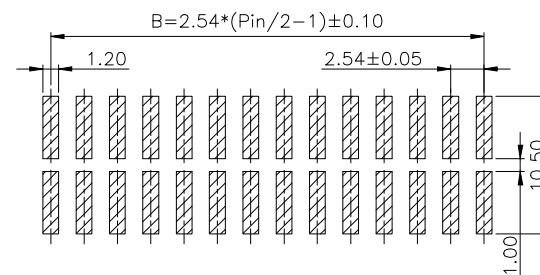
Current Rating:3.0Amp
 Voltage Rating:250V AC
 Insulation Resistance:1000MΩ min
 Contact Resistance:20mΩ max
 Withstand Voltage:600V AC/DC
 Operating Temperature:-40° C to +105° C
 Contact Material:Brass
 Contact Plating:Au or Sn Over Ni
 Latch Material:Zinc Alloy
 Latch plating:Ni
 Insulator Material:PA6T+30%GF UL 94V-0



Detail A Long Latch



Detail A Short Latch



Recommended PCB Layout

Ordering Code:

LHDM05 - X - X - X - X - X - X
 ① ② ③ ④ ⑤ ⑥ ⑦

- ① Series No:
06 08 10 12
14 16 18 20
24 26 30 34
40
- ② No. of Contacts
- ③ Contact Plating:
G0:Gold flash S0:Selective
G1:3u" Gold S1:Selective 3u"
G2:5u" Gold S2:Selective 5u"
G3:10u" Gold S3:Selective 10u"
G4:15u" Gold S4:Selective 15u"
G5:30u" Gold S5:Selective 30u"
SN:Tin
- ④ Color Insulator
B:Black
U:Blue
G:Grey
- ⑤ Insulator Material
A:PBT
B:PA6T
C:LCP
D:PA46
E:PA9T
- ⑥ Packing
A:Tray
B:Bag
U:Tube+CAP
R:Tape&Reel
W:Tape&Reel+CAP
- ⑦ Dim C Height:
S:Short Latch Dim C=4.4MM
L:Long Latch Dim C=8.3MM

Dimension :

Pos	Dim A	Dim B	Pos	Dim A	Dim B	Pos	Dim A	Dim B
6	15.24	5.08	14	25.40	15.24	26	40.64	30.48
8	17.78	7.62	16	27.94	17.78	30	45.72	35.56
10	20.32	10.16	20	33.02	22.86	34	50.80	40.64
12	22.86	12.70	24	38.10	27.94	40	58.42	48.26

Unless Otherwise specified tolerance
 X. ±0.35 X.XX: ±0.20
 X.X: ±0.25 X.XXX: ±0.15

Atkconn® ATKCONN ELECTRONICS CO., LTD
[Http://www.atkconn.com](http://www.atkconn.com)

SCALE: As Shown	UNIT: mm
DRAW ZLA	DATE 24/04/2022
CHECK BobYang	DATE 24/04/2022

TITLE:
LHDM05 2.54mm Ejector Header SMT With Plastic Latch



DRAWING NO: LHDM05-XXXXXX
 PRODUCT NO: LHDM05-XXXXXX

REV	DESCRIPTION	DATE
1	2	3
4	5	6
7	8	