

HSF



ROHS

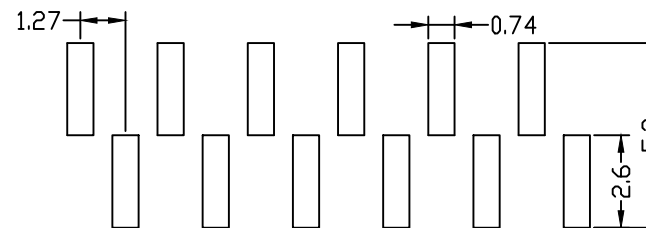
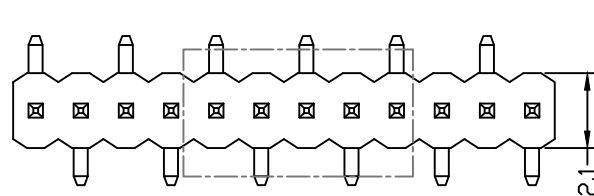
**SPECIFICATIONS:**

Current Rating: 1Amp  
 Insulation Resistance: 1000M ohms min  
 Contact Resistance: 20M ohms max  
 Dielectric Withstanding: AC500V  
 Operating Temperature: -65° C to +125° C  
 Contact Material: Brass  
 Insulator Material: PA6T, UL 94V-0 Black

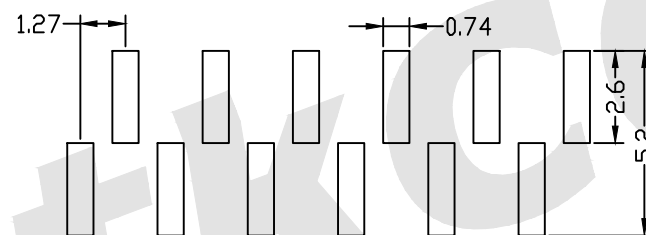
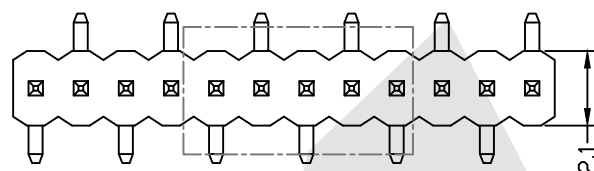
**Ordering Code:**

PHCM03 - X - X - S - A-D-W - X - X - X  
 ① ② ③ ④ ⑤ ⑥ ⑦ ⑧

- ① Series No:
- ② No. of Contacts: 01 To 50
- ③ Contact Plating:  
 G0:Gold flash S0:Selective  
 G1:3u" Gold S1:Selective 3u"  
 G2:5u" Gold S2:Selective 5u"  
 G3:10u" Gold S3:Selective 10u"  
 G4:15u" Gold S4:Selective 15u"  
 G5:30u" Gold S5:Selective 30u"  
 SN: Tin
- ④ Connector Type  
 S: Single
- ⑤ Pin Length:  
 A: 0300=3.00mm  
 D: 0020=0.20mm  
 W: 0420=4.20mm  
 Please mark the desired length in the A/D/W
- ⑥ Insulator Material:  
 B:PA6T  
 C:LCP  
 E:PA9T
- ⑦ Packing:  
 A:Tray  
 B:Bag  
 T:Tube  
 U:Tube+CAP  
 R:Tape&Reel  
 W:Tape&Reel+CAP
- ⑧ PCB Layout Option:  
 A:Type A  
 B:Type B

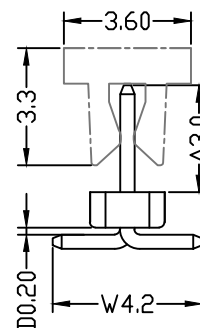
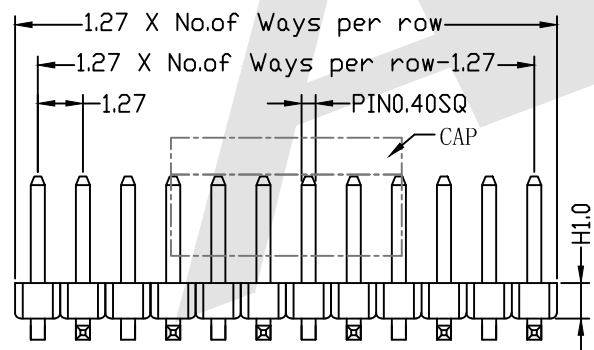


TYPE A



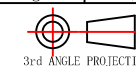
TYPE B

**PCB LAYOUT**



Unless Otherwise specified tolerance  
 X. ±0.35 X.XX: ±0.20  
 X.X: ±0.25 X.XXX: ±0.15

SCALE: As Shown UNIT: mm  
 DRAW ZLA DATE 24/04/2022  
 CHECK BobYang DATE 24/04/2022



**Atkconn**® ATKCONN ELECTRONICS CO., LTD  
[Http://www.atkconn.com](http://www.atkconn.com)

TITLE: 1.27mm Pin Header Single Row SMT Type

DRAWING NO: PHCM03-XXS-0300-0020-0420-XXX

PRODUCT NO: PHCM03-XXS-0300-0020-0420-XXX

REV	DESCRIPTION	DATE