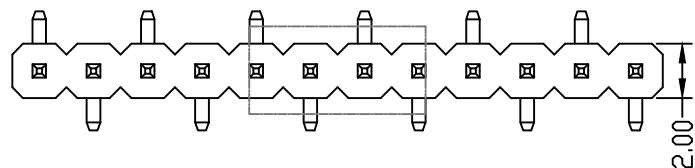


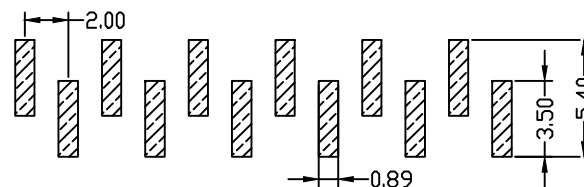
HSF



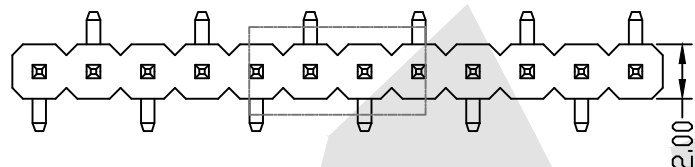
ROHS



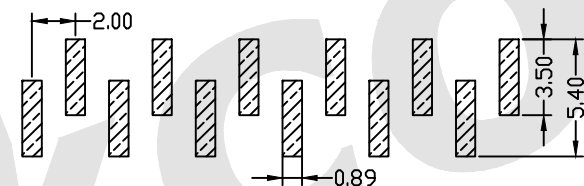
TYPE A



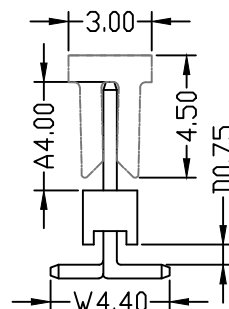
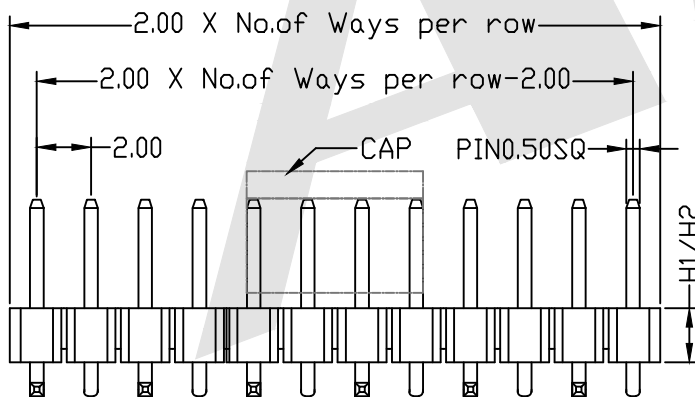
TYPE A
PCB LAYOUT



TYPE B



TYPE B
PCB LAYOUT



SPECIFICATION

Current Rating: 1.5 Amp
 Insulation Resistance: 1000M ohms min
 Contact Resistance: 20M ohms max
 Dielectric Withstanding: AC500V
 Operating Temperature: -65°C to +125°C
 Contact Material: Brass
 Insulator Material: PA6T,UL 94V-0 Black

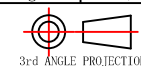
Ordering Code:

PHDM02 - X - X - S - A - D - W - X - X - X - X
 ① ② ③ ④ ⑤ ⑥ ⑦ ⑧ ⑨

- ① Series No:
- ② No.of Contacts
01 To 40
- ③ Contact Plating:
G0:Gold flash S0:Selective
G1:3u" Gold S1:Selective 3u"
G2:5u" Gold S2:Selective 5u"
G3:10u "Gold S3:Selective 10u"
G4:15u" Gold S4:Selective 15u"
G5:30u" Gold S5:Selective 30u"
SN:Tin
- ④ Connector Type
S:Single
- ⑤ Pin Length:
A:0400=4.0mm
D:0075=0.75mm
W:0440=4.40mm
Please mark the desired length in the A/D/W
- ⑥ Insulator Material
A:PBT B:PA6T
C:LCP D:PA46
E:PA9T
- ⑦ Packing
A:Tray
B:Bag
T:Tube
U:Tube+CAP
R:Tape&Reel
W:Tape&Reel+CAP
- ⑧ PCB Layout Option
A:Type A
B:Type B
- ⑨ Plastic High
H1:1.5mm
H2:2.0mm

Unless Otherwise specified tolerance
 X. ±0.35 X.XX: ±0.20
 X.X: ±0.25 X.XXX: ±0.15

SCALE: As Shown UNIT: mm
 DRAW ZLA DATE 24/04/2022
 CHECK BobYang DATE 24/04/2022



Atkconn® ATKCONN ELECTRONICS CO., LTD
 Http://www.atkconn.com

TITLE:
 2.00mm Pin Header SingleRow SMT Type

DRAWING NO: PHDM02-XXS-0400-0075-0440-XXXX

PRODUCT NO: PHDM02-XXS-0400-0075-0440-XXXX

REV	DESCRIPTION	DATE
1		
2		
3		
4		
5		