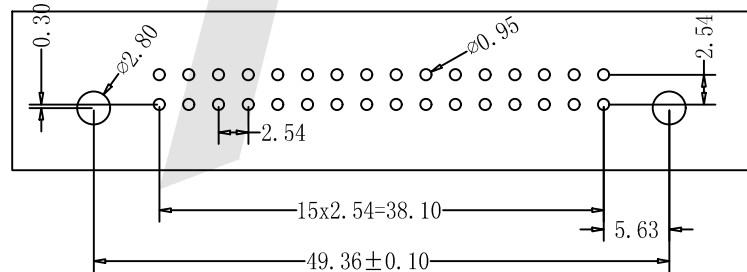
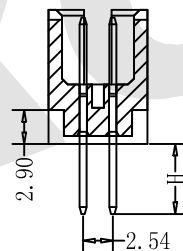
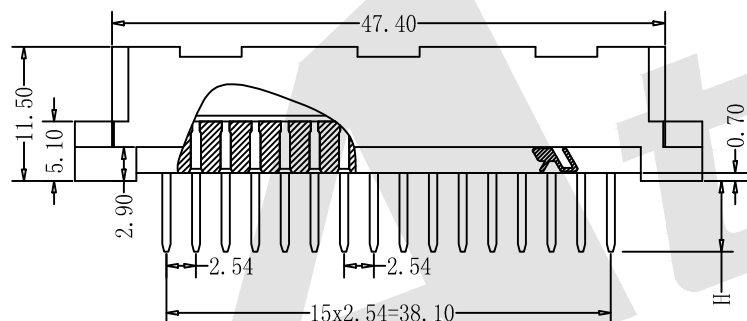
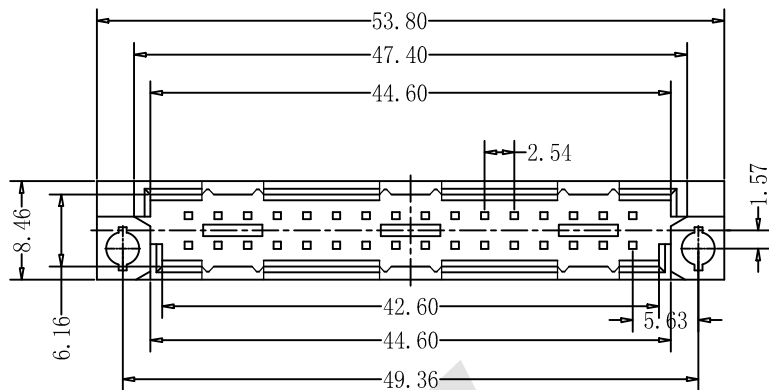


HSF



ROHS

Code	Number Of Contacts	Contact Arrangement	Rows With Contacts	Pitch
A	16		a	2.54
C1	16		a b	5.08
C	32		a	2.54



Recommended P. C. B. Layout

SPECIFICATION

Current Rating: 2.0Amp
 Insulation Resistance: 1000MΩ min.at DC 100V
 Contact Resistance: 20mΩ max
 Withstand Voltage: AC 1000V For 1 Minute
 Operating Temperature: -55° C to +105° C
 Contact Material: Brass
 Contact Plating: Au or Sn Over Ni
 Insulator Material: PBT+30%GF UL 94V=0
 Insertion Force: 32 pin max.30N
 Withdrawal Force: 0.15N min.per individual contact

Ordering Code:

DMS - XX - X - X - X - 211
 ① ② ③ ④ ⑤ ⑥

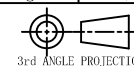
- ① Series No:
- ② No. of Contacts
16p 32P
- ③ Termination
A: Straight solder tail length H=2.5mm
E: Straight solder tail length H=4.0mm
I: Straight tail length H=5.0mm
K: Straight tail length H=7.4mm
M: Wrap post tail length H=13.0mm
N: Wrap post tail length H=17.0mm
O: Wrap post tail length H=19.4mm
- ④ Rows Loaded With Contacts
A: Row a
C1: Row a+b(2, 4, 6...)
C: Row a+b
- ⑤ Contact Plating
G0: Gold flash
S0: Gold Flash/Ni
G1: 3u" Gold
S1: 3u" Gold/Ni
G2: 5u" Gold
S2: 5u" Gold/Ni
G3: 10u" Gold
S3: 10u" Gold/Ni
G4: 15u" Gold
S4: 15u" Gold/Ni
G5: 30u" Gold
S5: 30u" Gold/Ni
SN: Tin
- ⑥ Series number
211

Unless Otherwise specified tolerance
 X. XX: ±0.20
 X. X: ±0.25 X. XXX: ±0.15
 X. XX: ±0.35

Atkconn® ATKCONN ELECTRONICS CO., LTD
[Http://www.atkconn.com](http://www.atkconn.com)

SCALE: As Shown UNIT: mm
 DRAW ZLA DATE 24/04/2022
 CHECK BobYang DATE 24/04/2022

TITLE: DIN41612 Vertical Plug Type Half Q Connectors-Inversed 32 Positions



DRAWING NO: DMS-XX-XXX-211
 PRODUCT NO: DMS-XX-XXX-211

REV	DESCRIPTION	DATE